

## 1.2 Site Plan

### 1.2.1 Site 1: Dairy barn and Associated Facilities

At Site 1 (Figure 2), the exact final dimensions and location for a new barn and manure storage have yet to be determined. The minimum setback from property lines for the new manure storage will be 100 m, and the barn will conform to local zoning by-law requirements. The new barn will be primarily for lactating mature cows. The existing barns and exercise area will primarily be for young calves (< 4 months of age), and some dry cows and heifers expecting to soon calve. The new manure storage will consist of two cells. The first cell, EMS Cell #1, will be constructed immediately and the second cell, EMS Cell #2 will be constructed when necessary to accommodate herd expansion and the requirements within the Livestock Manure and Mortalities Management Regulation (LMMMR) for 400 days of storage capacity.

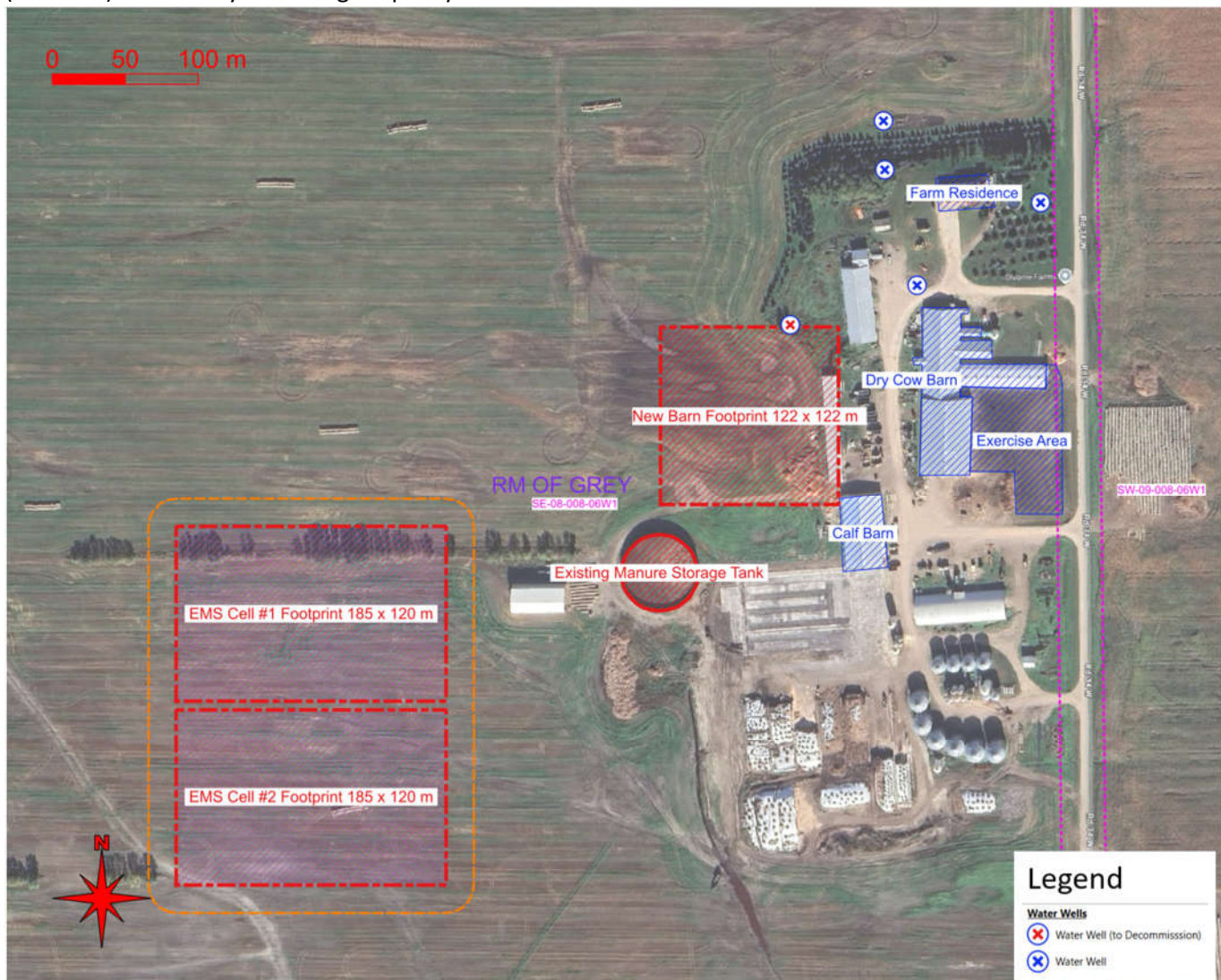


Figure 2: Divorne Farms SE-08-008-06WPM Site 1 Plan

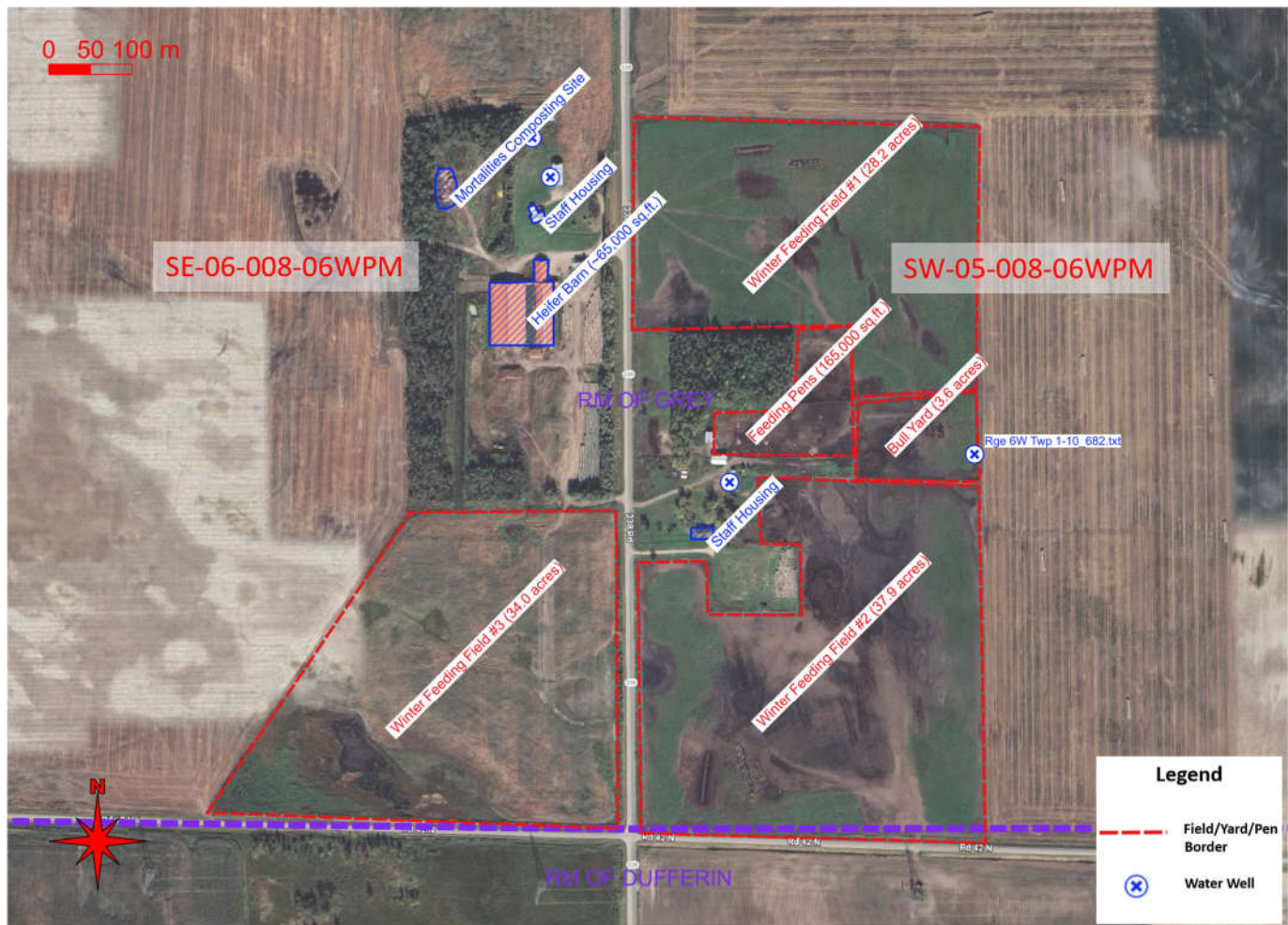


Figure 3: Divorne Farms SE-06-008-06WPM and SW-05-008-06WPM Site 2 Plan

### 1.2.2 Site 2: Heifer Barn and Winter Feeding Fields (aka Reimer Properties).

At Site 2 (Figure 3), livestock are located across two quarters divided by Rd 338; SE-06-008-06WPM on the west side of the road and SW-05-008-06WPM on the east side of the road. This location is also referred to as the 'Reimer properties'.

#### SE-06-008-06WPM

At this location, a heifer barn with approximately 65,000 ft<sup>2</sup> of floor space currently exists. The barn will hold a **maximum** of 450 heifers (4 to 13 months of age, 185 AUs at 0.41 AU/head). Manure from this barn will be scraped and moved to **field storage** as required.

SE-06-008-06WPM also has a field approximately 34 acres (13.8 ha) in area directly to the south of the barn (Winter Feeding Field #3). This field will be one of three used during winter months to feed from 150 to 200 heifers aged > 13 months (maximum 174 AUs at 0.87 AU/head). The other two fields are located across the road



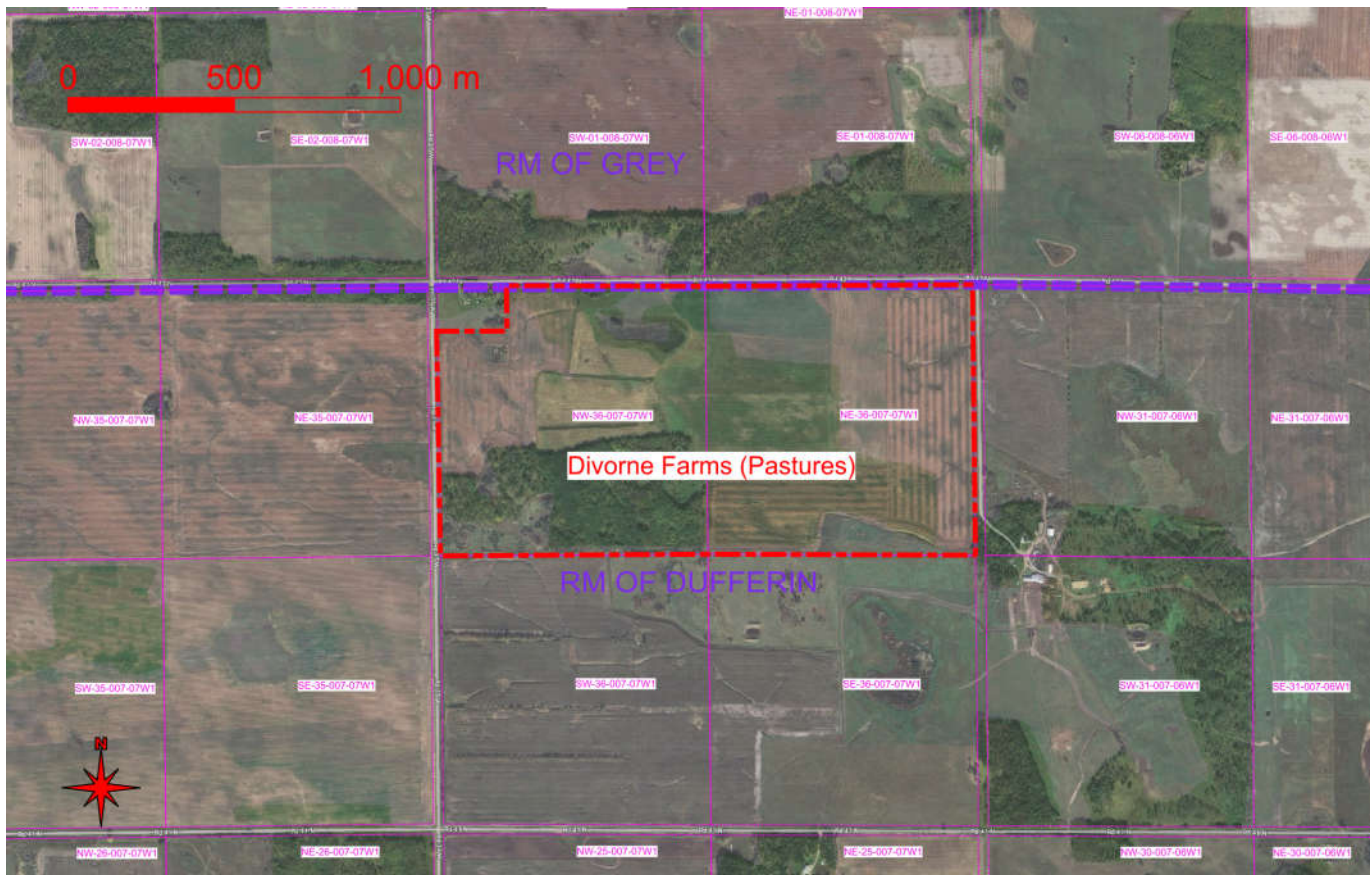


Figure 4: Divorne Farm Pastures

## 8.0 Setbacks

### 8.1.1 New Barn and Earthen Manure Storage at Site 1.

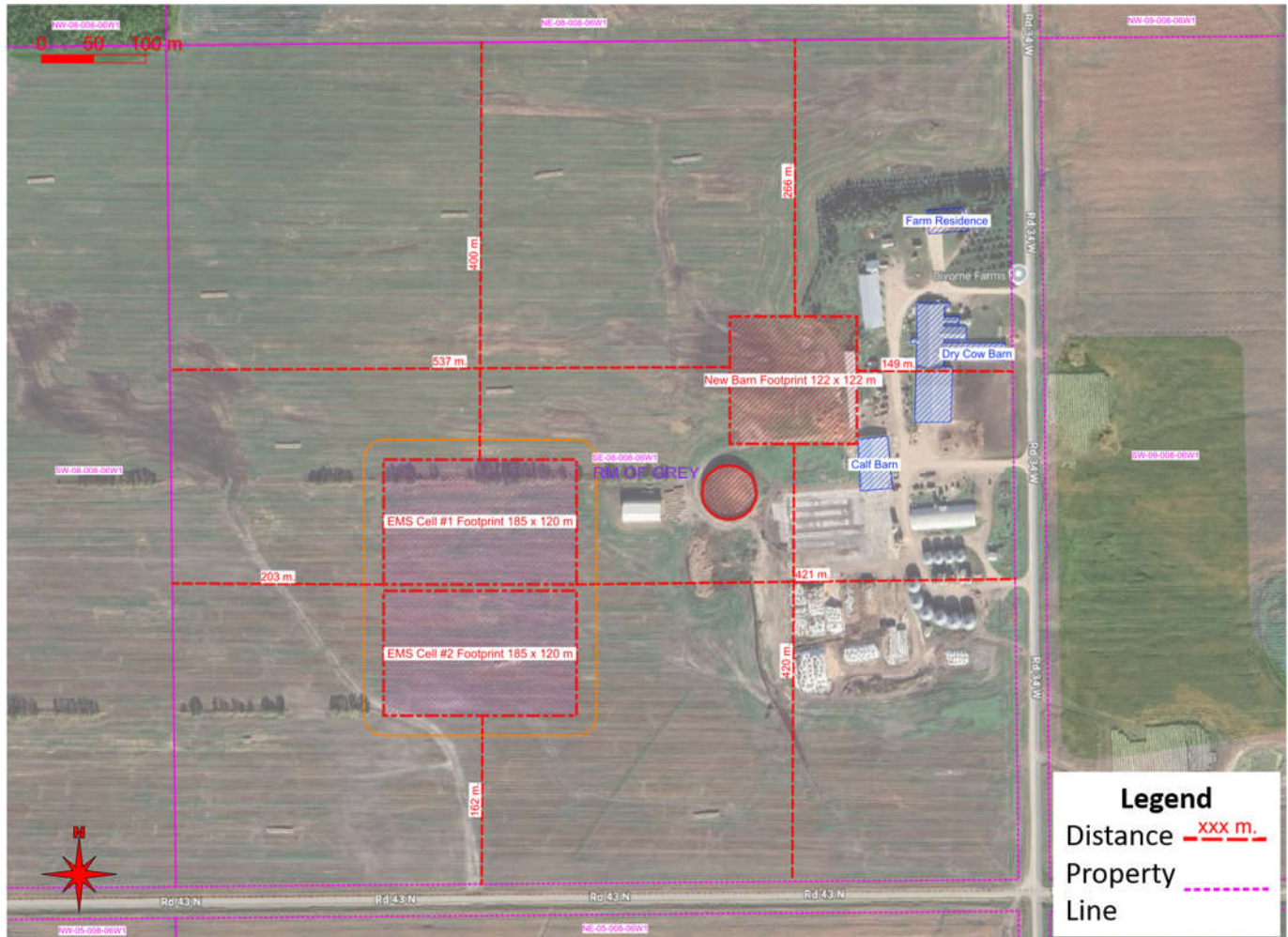


Figure 5: Distance to Property Lines for new Barn and Manure Storage at Site 1.



### 8.1.2 Existing Feeding Pens and Barn at Site 2 (Reimer Properties)

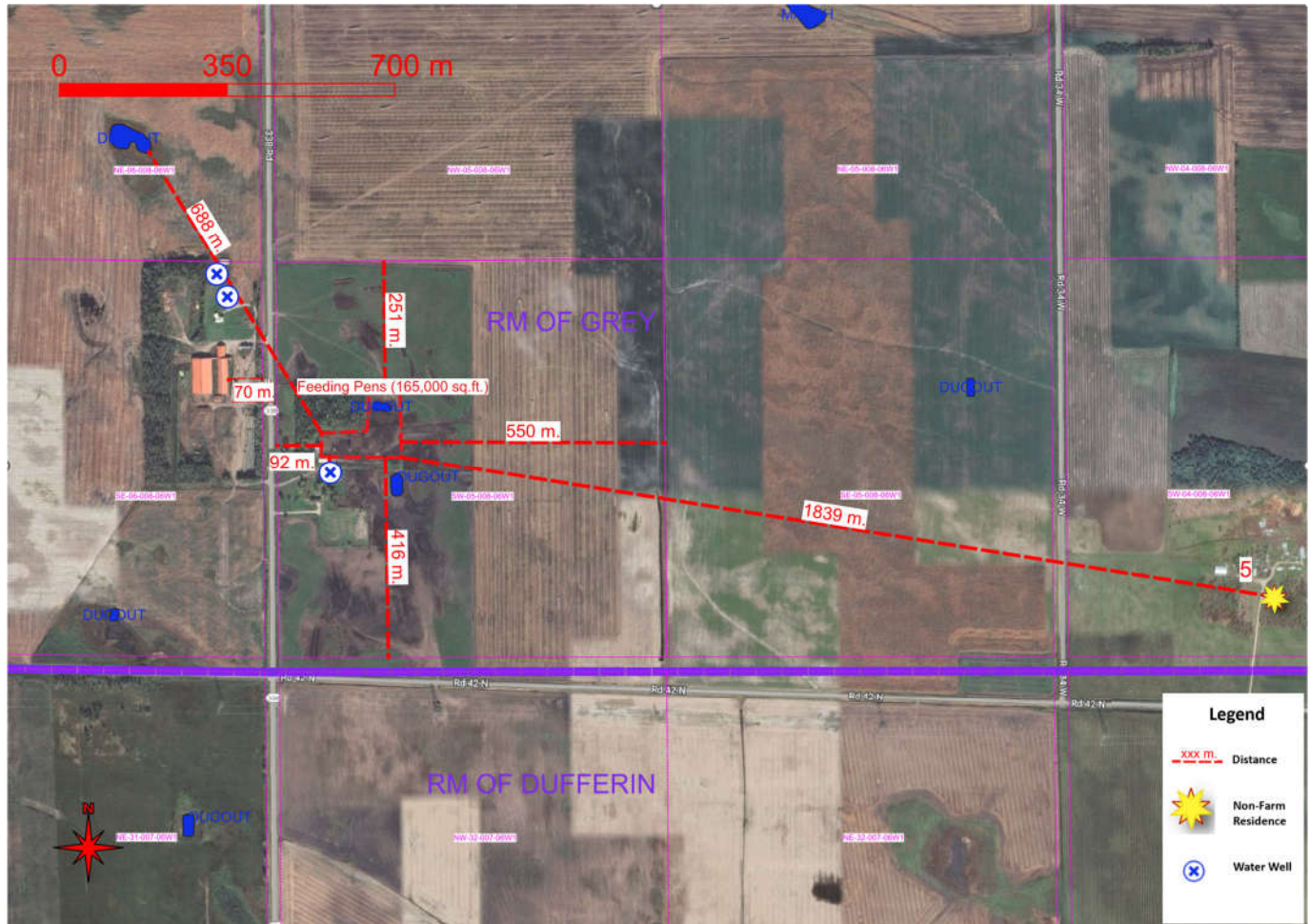


Figure 6: Setback and Separation Distances at Site 2 for Existing Feeding Pens and Barn

## 9.0 Separation Distances (zoning by-law)

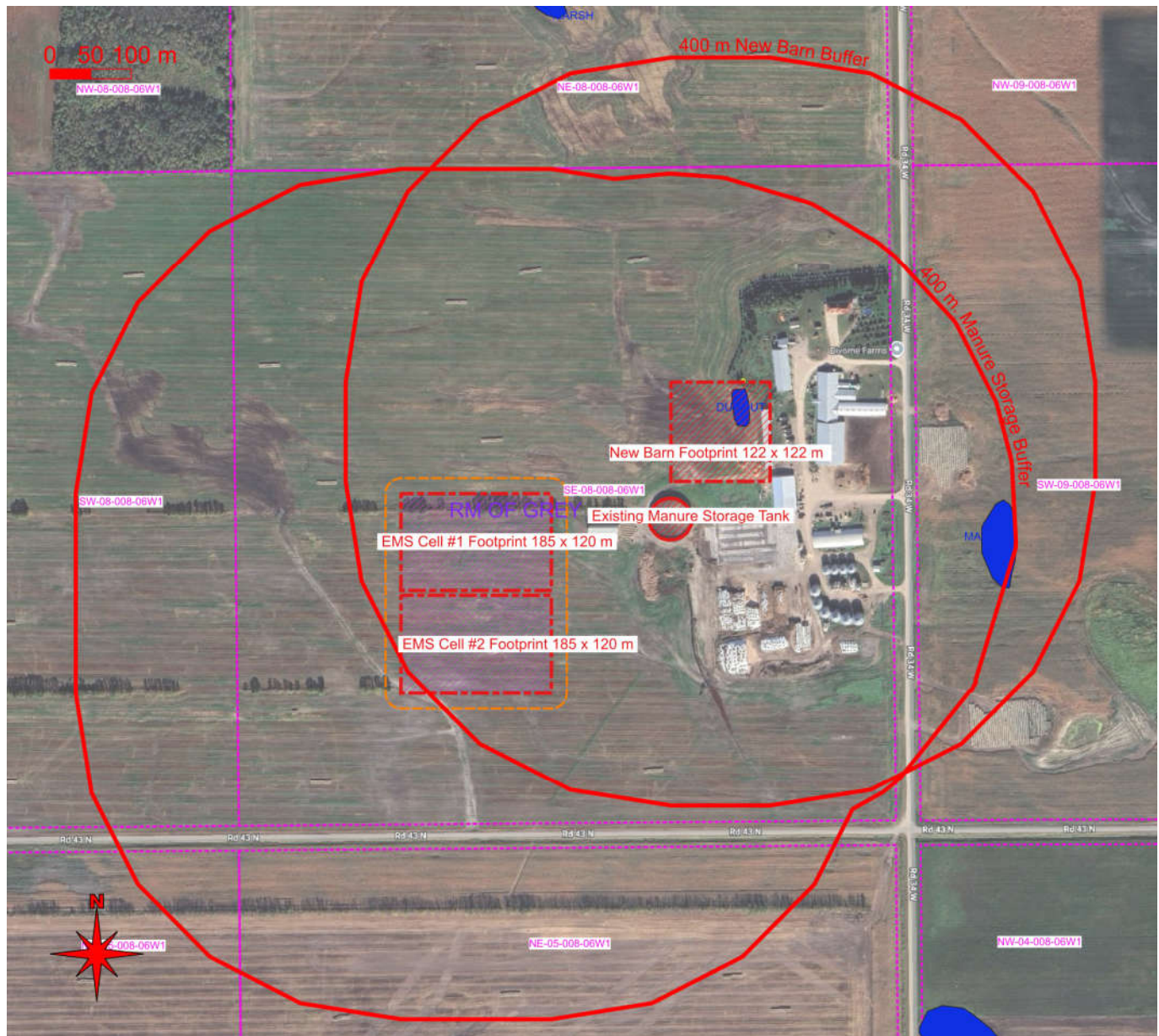


Figure 7: 400 m (1311 ft) buffer on new barn and manure storages at Site 1. Manure storage buffer includes both proposed and existing storage tank.



## 9.1 Land Use Map and 3 km. Buffer

### 9.1.1 Divorne Farms (Site 1, Home Quarter)

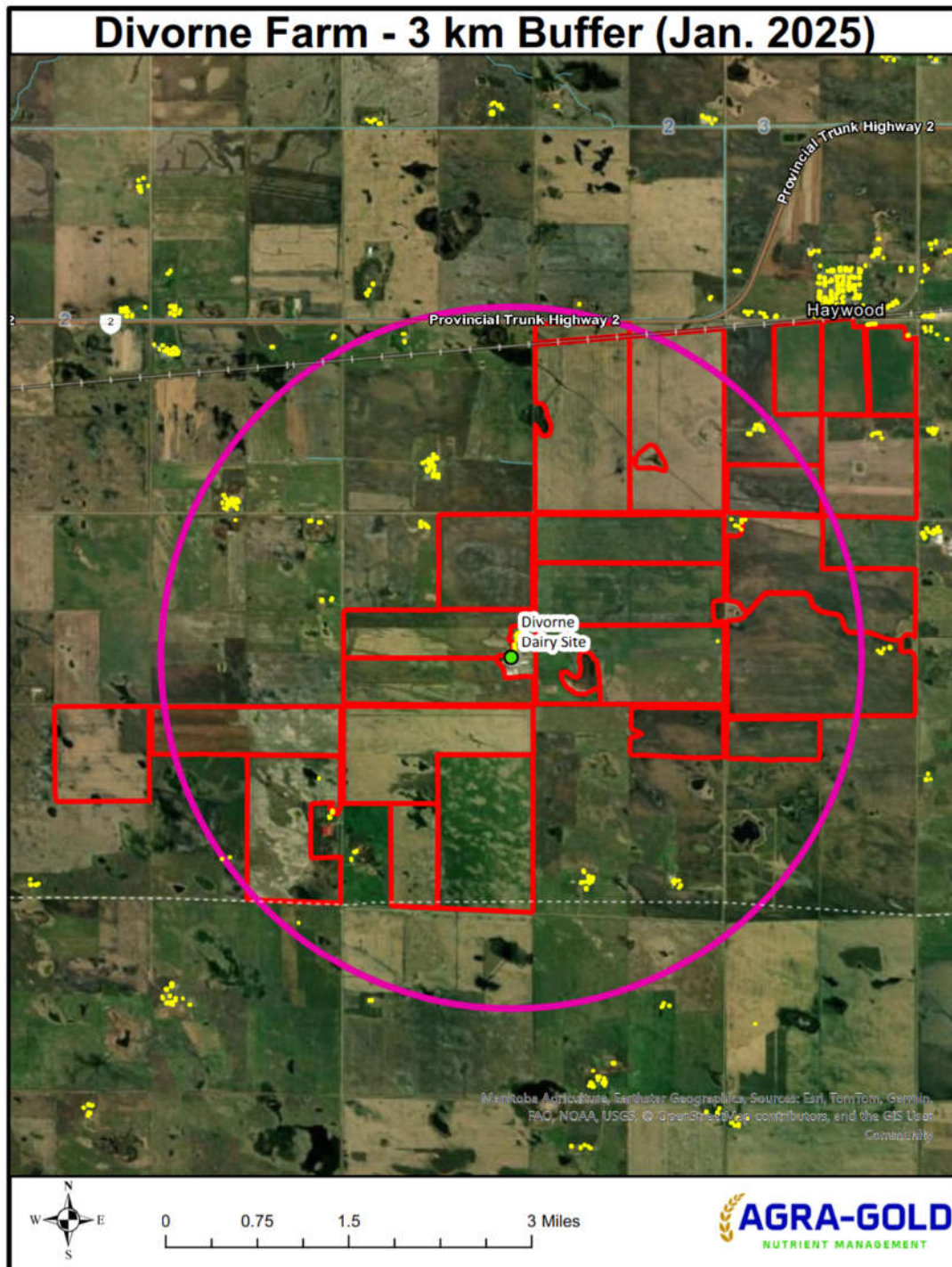


Figure 8: Site 1 with 3000 m buffer and non-Farm Residences.

### 9.1.2 Divorve Farms (Site 2, Reimer Properties)

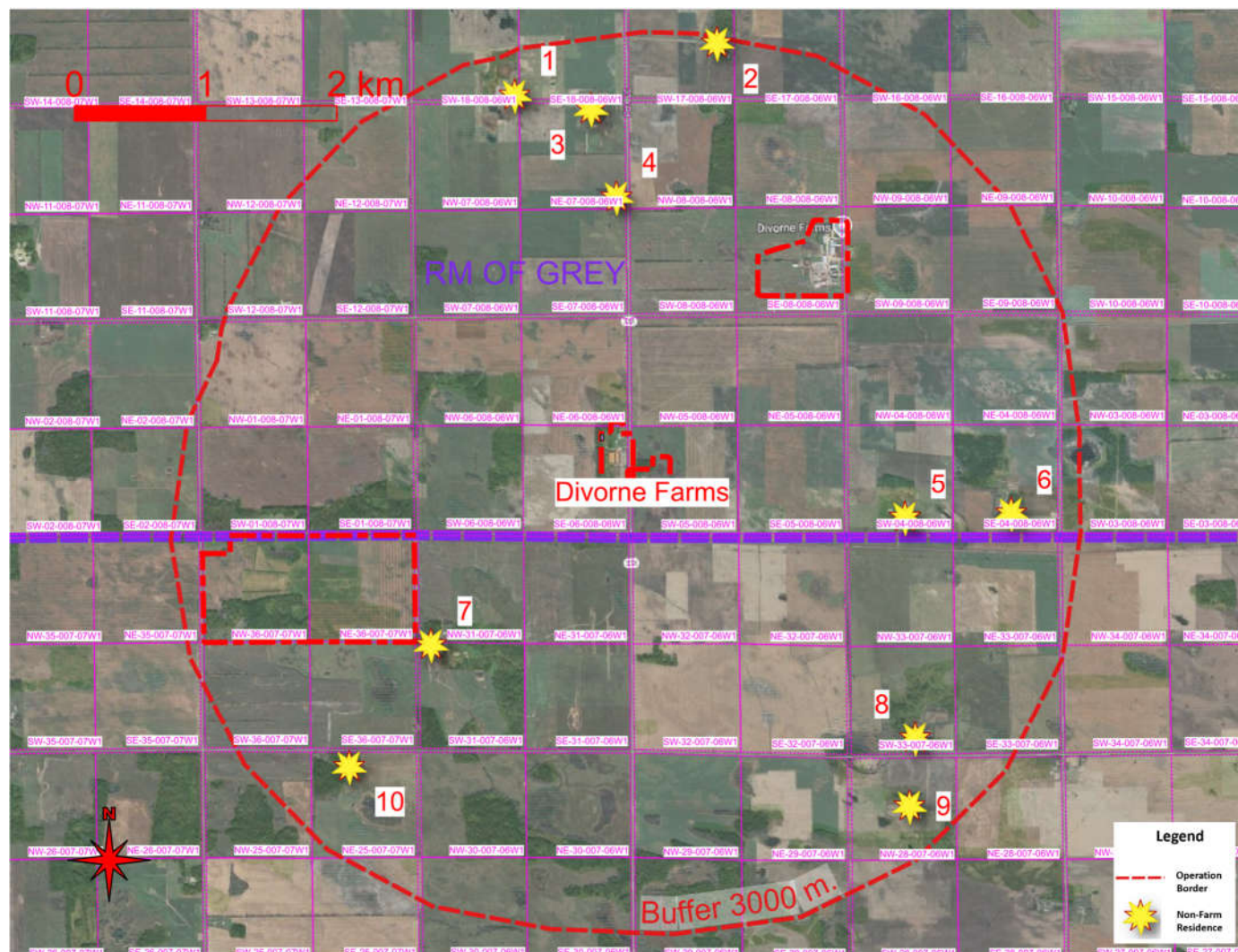


Figure 9: Site 2 with 3000 m buffer and non-Farm Residences.



### 13.0 & 14.0 Setback and Separation Distances Manure and Mortalities Sites to Water and Operation Boundaries

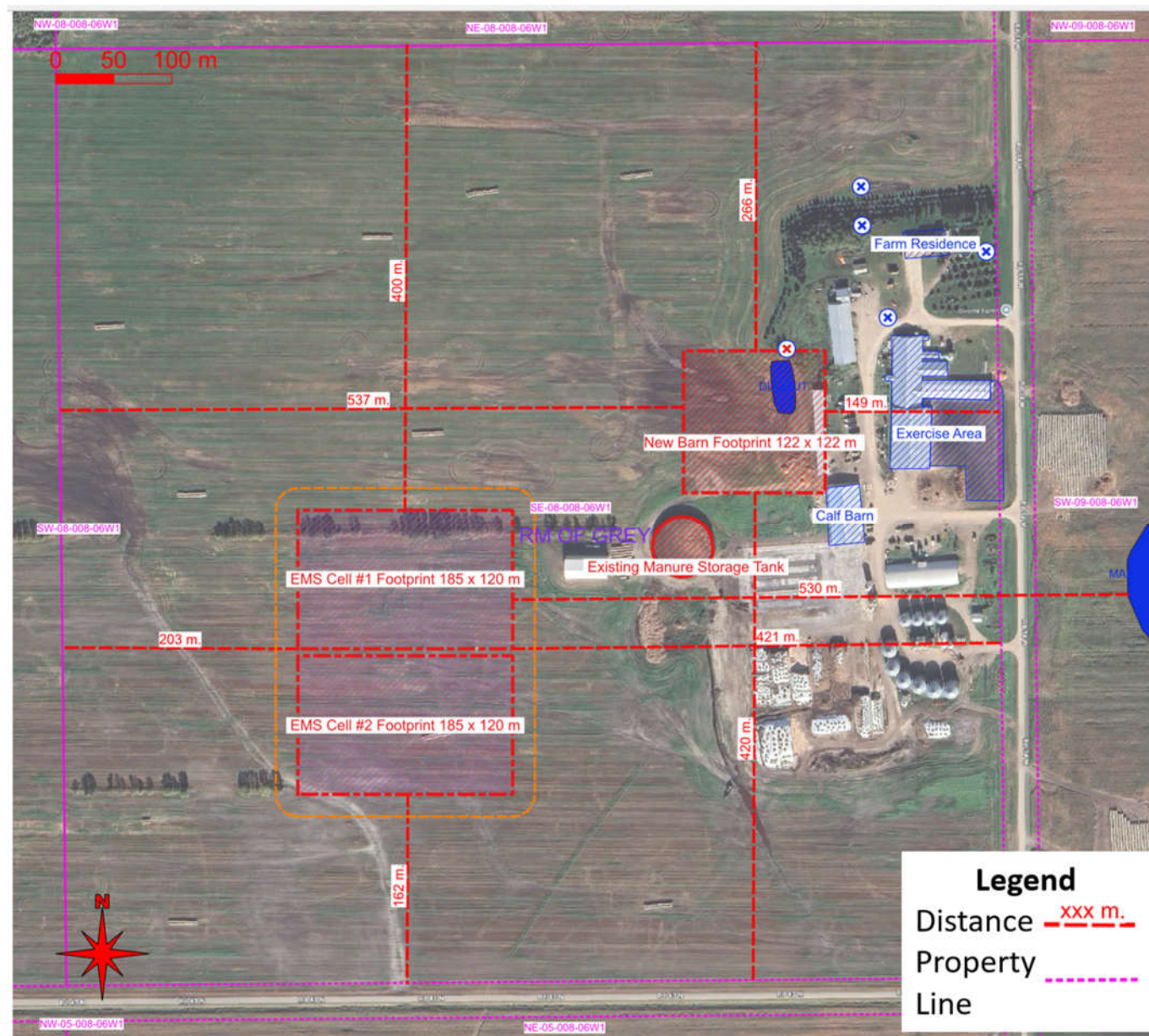


Figure 11: Setbacks and Separation Distances to New Manure Storage on Site 1

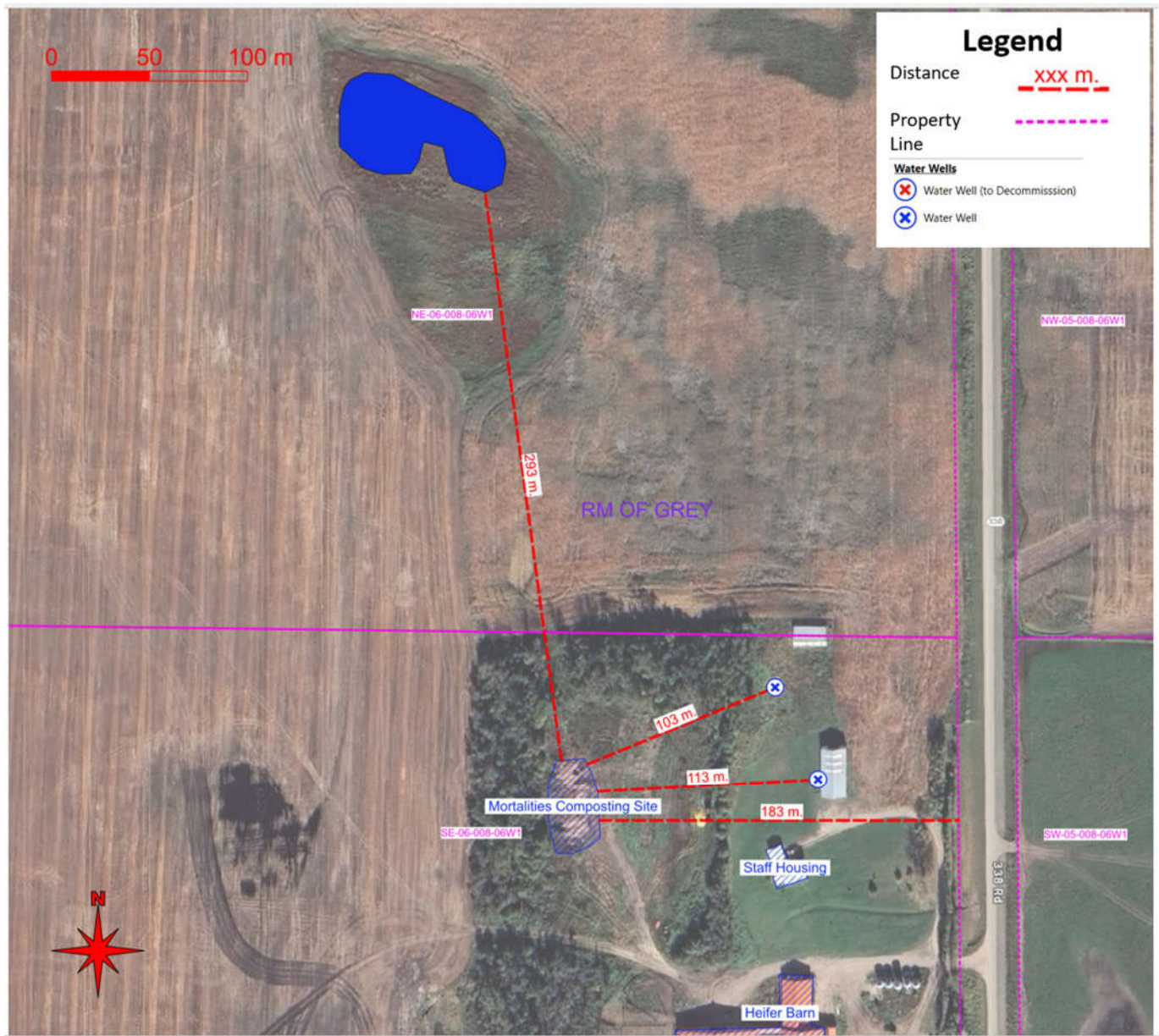


Figure 12: Mortalities Site Setback Distances at Site 2