

**NOTE:**

1. LOOP WIRES SHALL BE "U" OR "V" STYLE ONLY  
("U" STYLE IS SHOWN FOR ILLUSTRATIVE PURPOSES)

ALL DIMENSIONS ARE IN MILLIMETRES, UNLESS SPECIFIED OTHERWISE

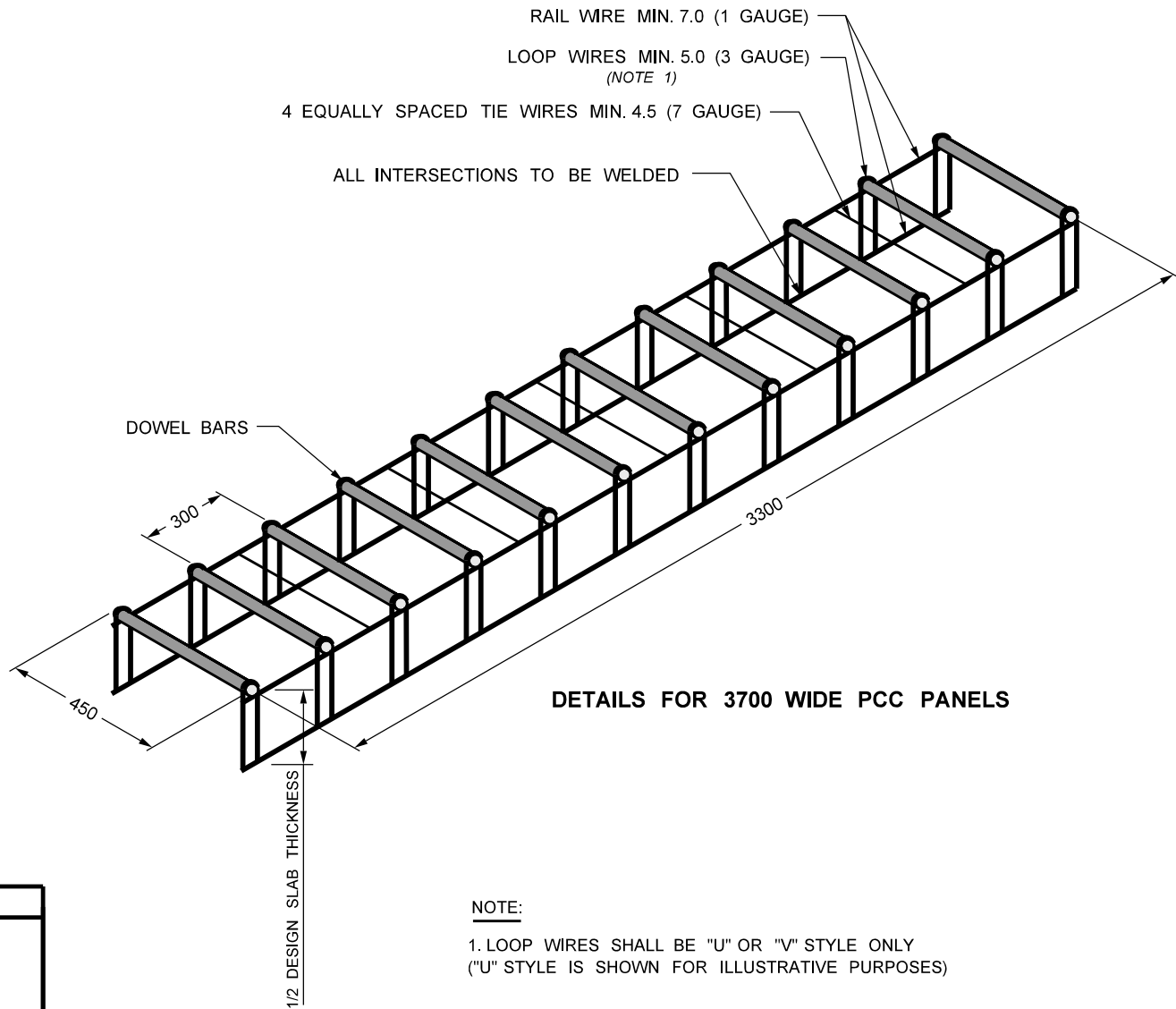
SEAL

COPY  
ORIGINAL SEALED BY:

M. ALAUDDIN AHAMMED, P.Eng.

March 31, 2026

APPROVALS	REVISIONS				MANITOBA STANDARD DRAWING	
ORIGINAL SIGNED BY: <u>DUSTIN BOOY</u> EXECUTIVE DIRECTOR OF HIGHWAY ENGINEERING SERVICES  ORIGINAL SIGNED BY: <u>TARA LISKE</u> EXECUTIVE DIRECTOR OF REGIONAL OPERATIONS	No.	DESCRIPTION	BY	DATE	DATE	DETAILS OF TYPICAL DOWEL BAR BASKET FRAME DESIGN
	  				MARCH 2026  SCALE     SHEET N.T.S.     1 OF 2	
					MSD - 830.5	



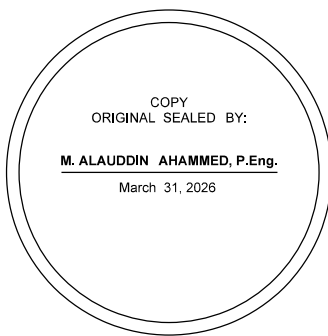
DETAILS FOR 3700 WIDE PCC PANELS


**NOTE:**

1. LOOP WIRES SHALL BE "U" OR "V" STYLE ONLY ("U" STYLE IS SHOWN FOR ILLUSTRATIVE PURPOSES)

ALL DIMENSIONS ARE IN MILLIMETRES, UNLESS SPECIFIED OTHERWISE

SEAL



APPROVALS		REVISIONS				MANITOBA STANDARD DRAWING	
ORIGINAL SIGNED BY: <b>DUSTIN BOOY</b> EXECUTIVE DIRECTOR OF HIGHWAY ENGINEERING SERVICES  ORIGINAL SIGNED BY: <b>TARA LISKE</b> EXECUTIVE DIRECTOR OF REGIONAL OPERATIONS	No.	DESCRIPTION	BY	DATE	DATE		DETAILS OF TYPICAL DOWEL BAR BASKET FRAME DESIGN
	△				MARCH 2026		
	△				SCALE	SHEET	<b>Manitoba</b>  Transportation and Infrastructure
	△				N.T.S.	2 OF 2	
					MSD - 830.5		