

Hydrologic Forecast Centre - Manitoba Transportation and Infrastructure

Assiniboine River Tributary Flows		
Last Reading Date	Hydrometric Stations	Flow (cfs)
15-May-24	Whitesand River near Canora	571
15-May-24	Shell River near Inglis	288
15-May-24	Qu'Appelle River near Welby	225
15-May-24	Little Saskatchewan River near Minnedosa	760
15-May-24	Conjuring Creek near Russell	3
15-May-24	Birdtail Creek near Birtle	232
15-May-24	Scissor Creek near McAuley	2
15-May-24	Silver Creek near Binscarth	69
15-May-24	Sturgeon Creek at St. James	10

Note: Please go to the next pages to view the historical and current flow hydrographs for these rivers

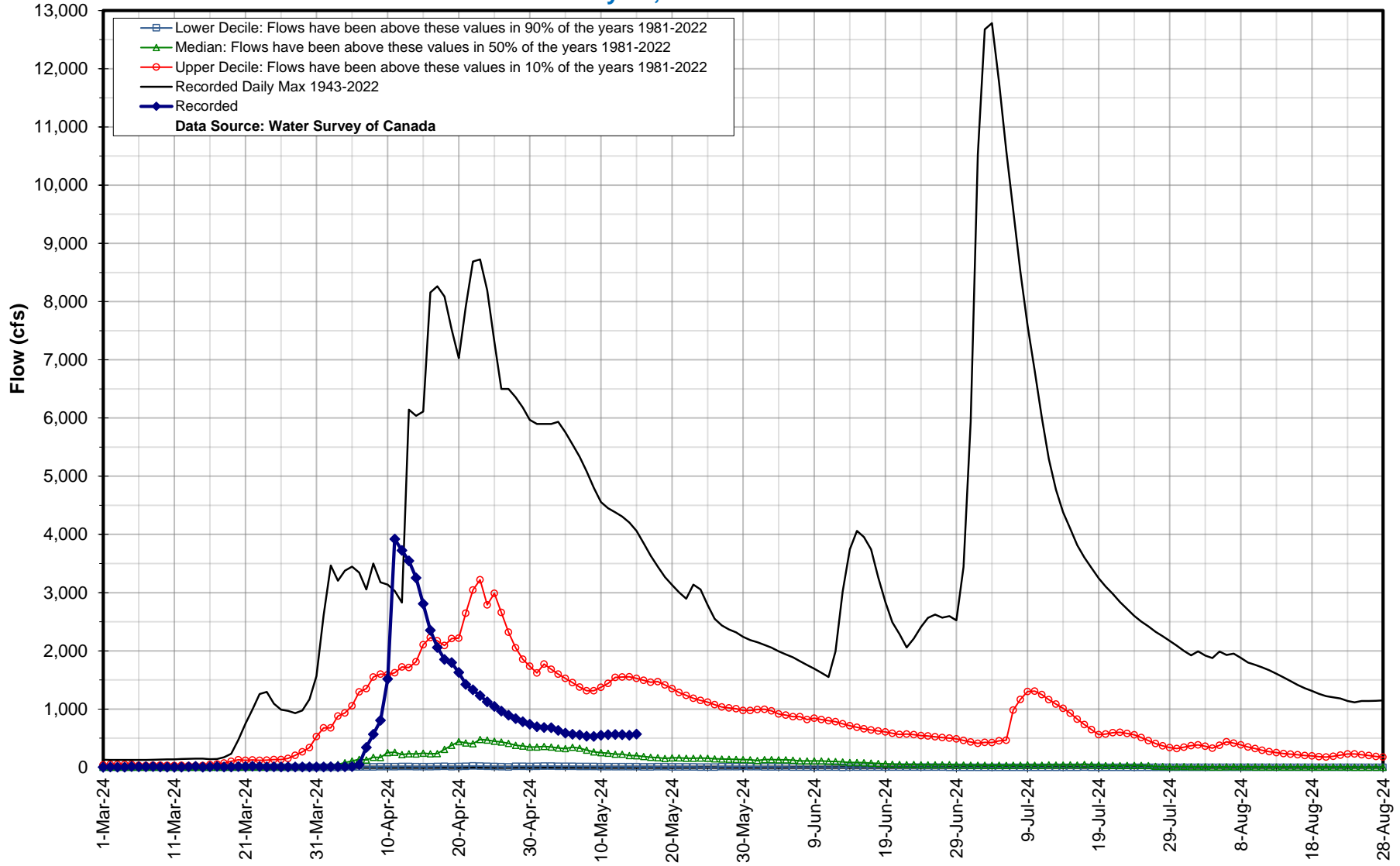
* Real-time flow and level data is provisional and subject to change. Data provided by Water Survey of Canada/Environment Canada

Hydrologic Forecast Centre - Manitoba Transportation and Infrastructure

Whitesand River near Canora

May 15, 2024 : 571 cfs

05MB003

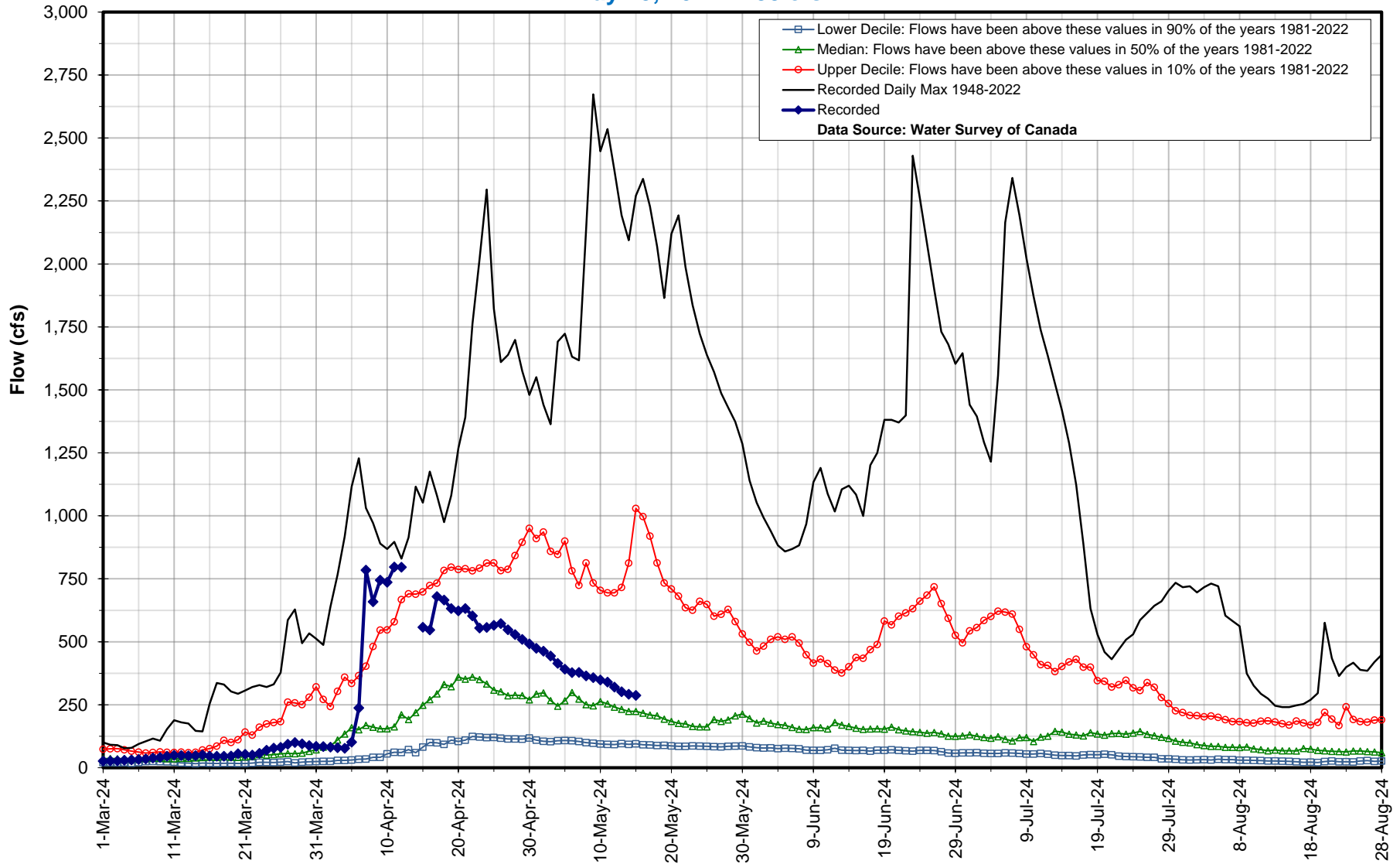


Hydrologic Forecast Centre - Manitoba Transportation and Infrastructure

Shell River near Inglis

May 15, 2024 : 288 cfs

05MD005

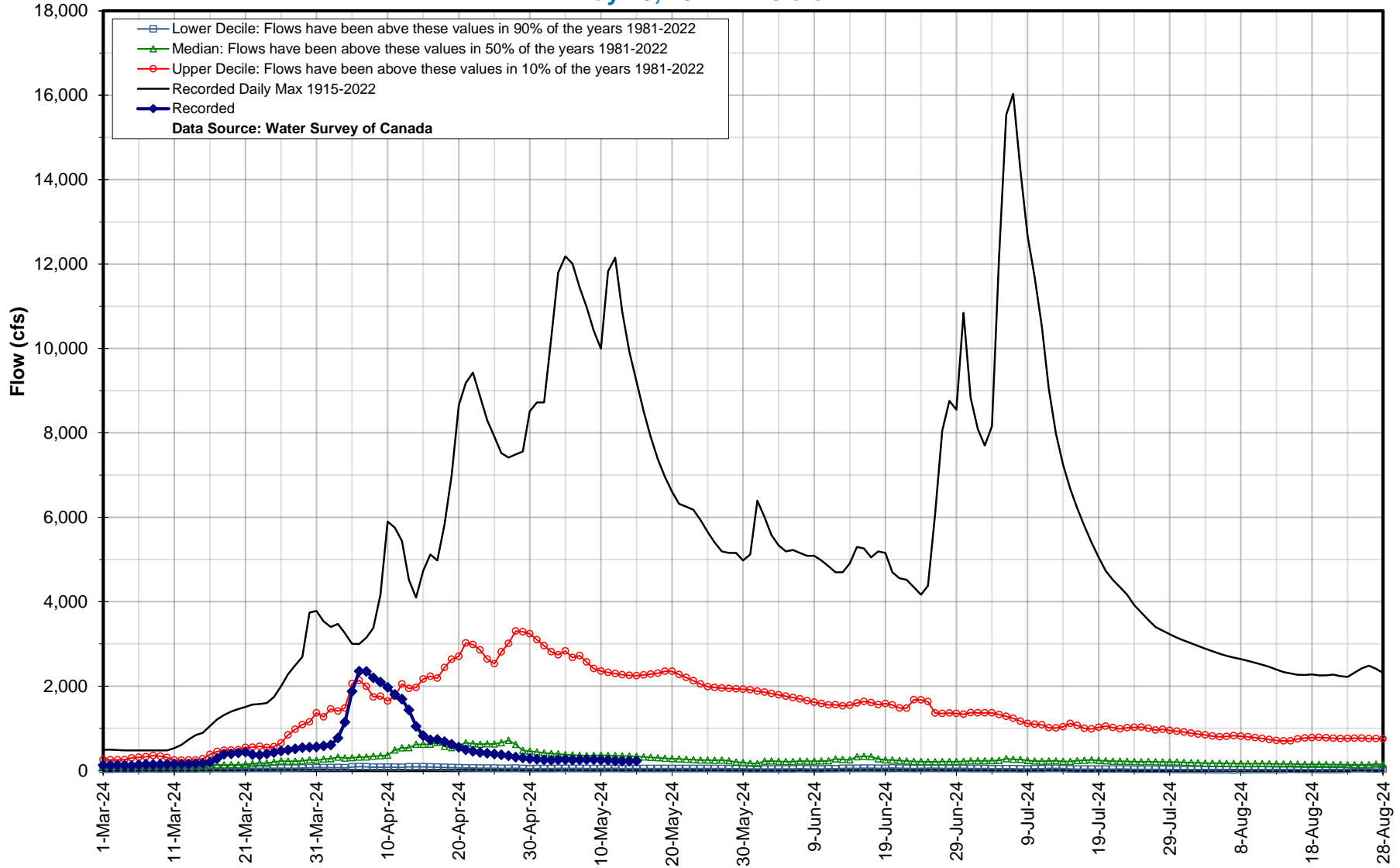


Hydrologic Forecast Centre - Manitoba Transportation and Infrastructure

Qu'Appelle River near Welby

May 15, 2024 : 225 cfs

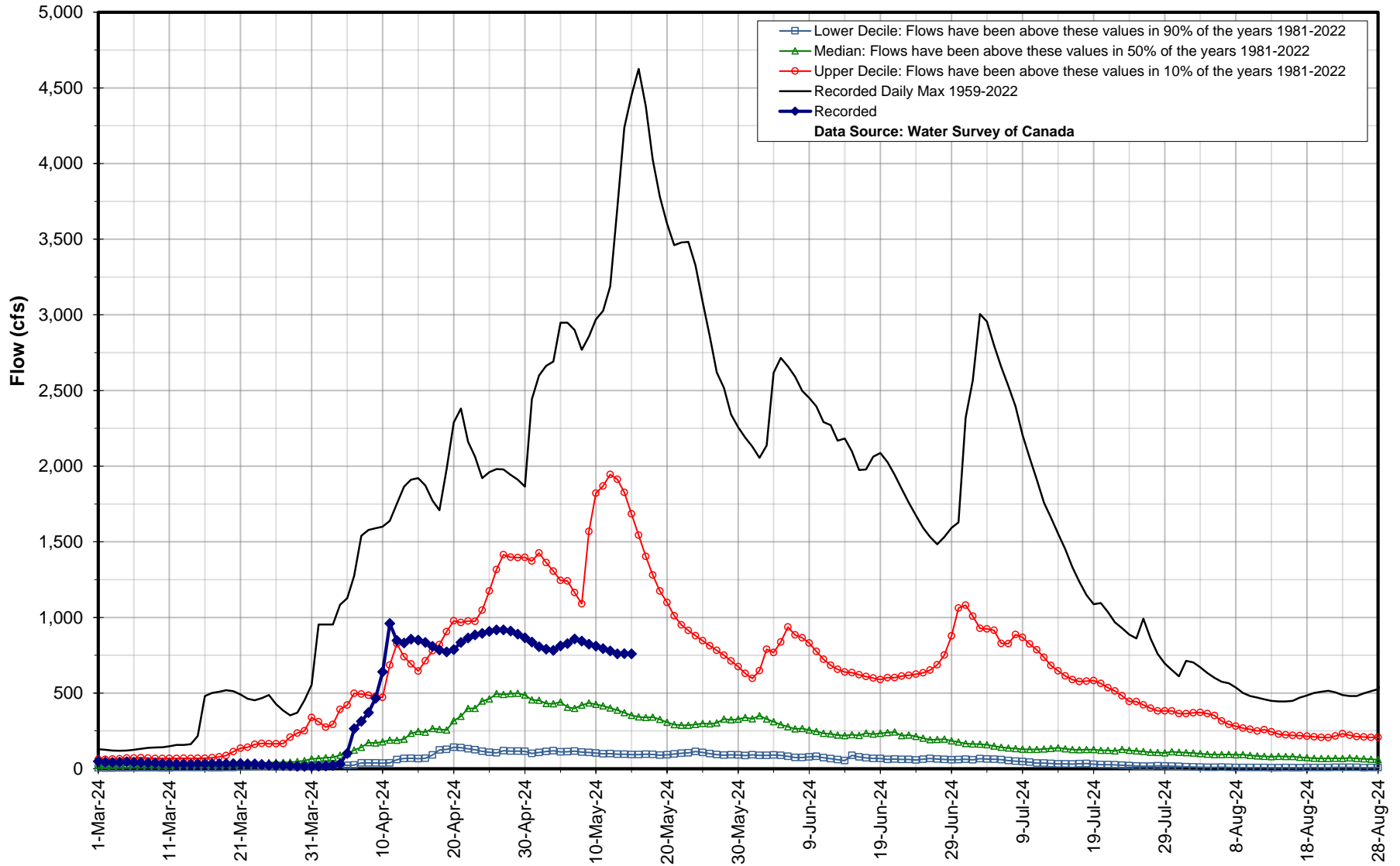
05JM001



Little Saskatchewan River near Minnedosa

May 15, 2024 : 760 cfs

05MF001

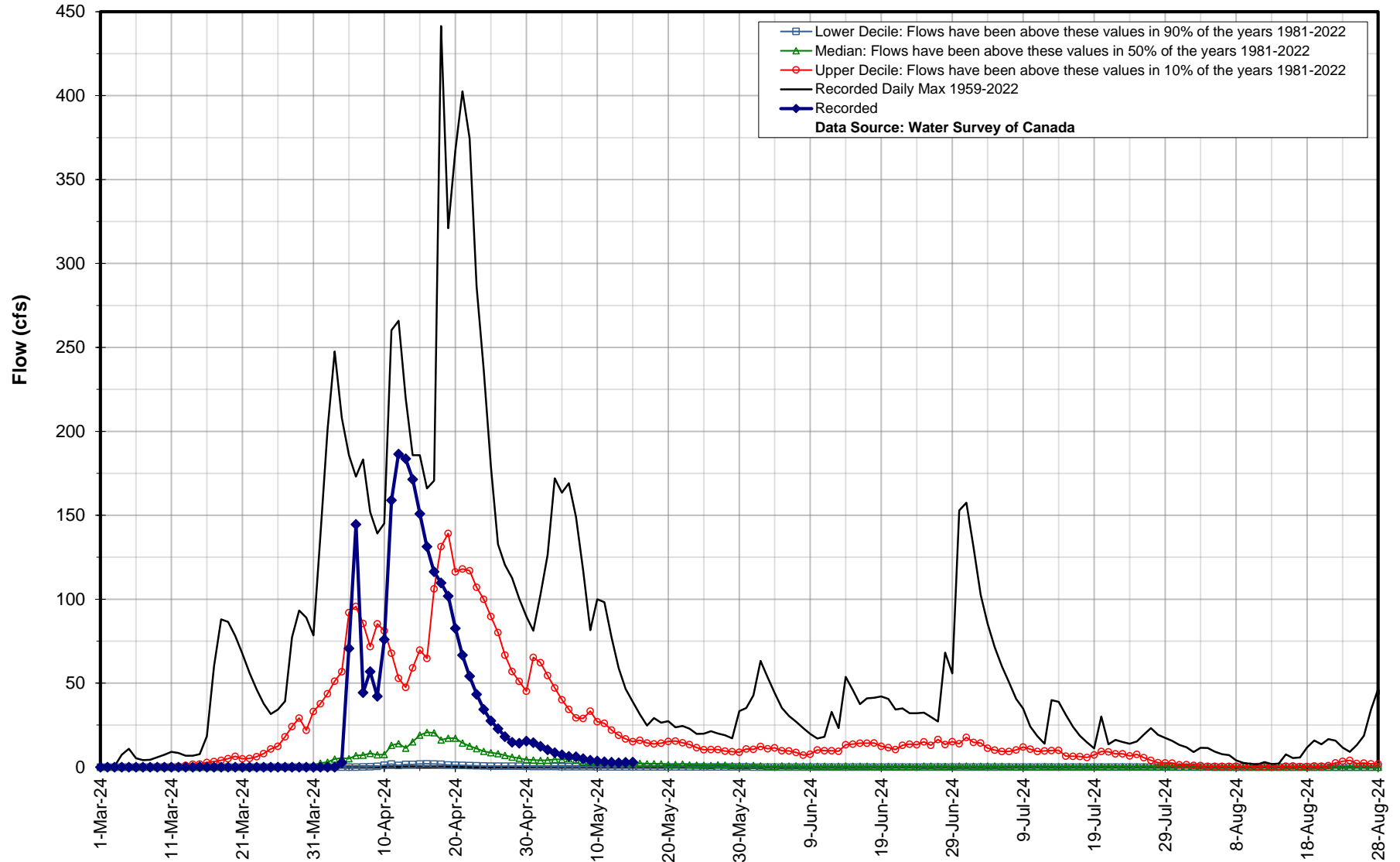


Legend:
- Lower Decile: Flows have been above these values in 90% of the years 1981-2022
- Median: Flows have been above these values in 50% of the years 1981-2022
- Upper Decile: Flows have been above these values in 10% of the years 1981-2022
- Recorded Daily Max 1959-2022
- Recorded
Data Source: Water Survey of Canada

Conjuring Creek near Russell

May 15, 2024 : 3 cfs

05ME005

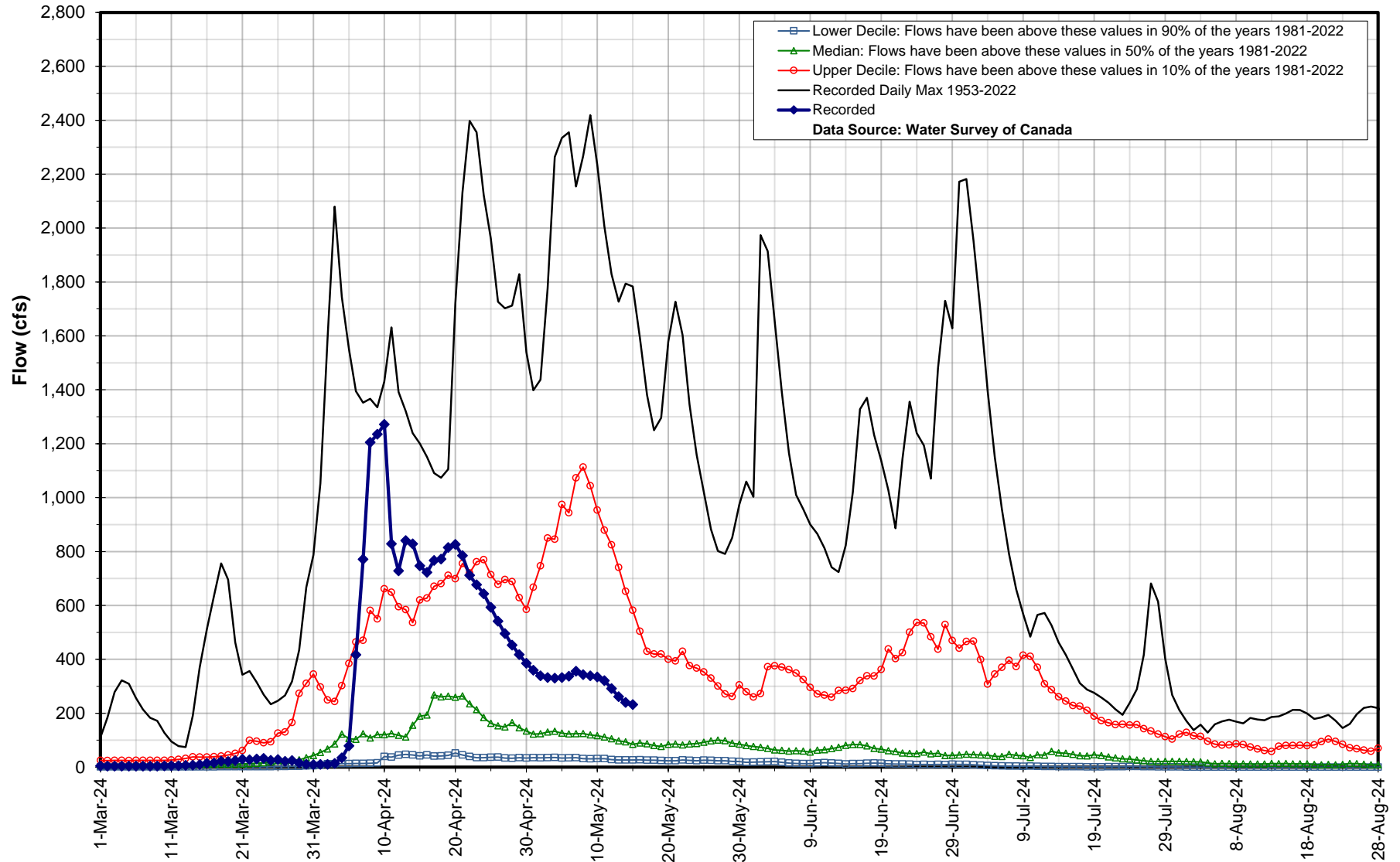


Hydrologic Forecast Centre - Manitoba Transportation and Infrastructure

Birdtail Creek near Birtle

May 15, 2024 : 232 cfs

05ME003



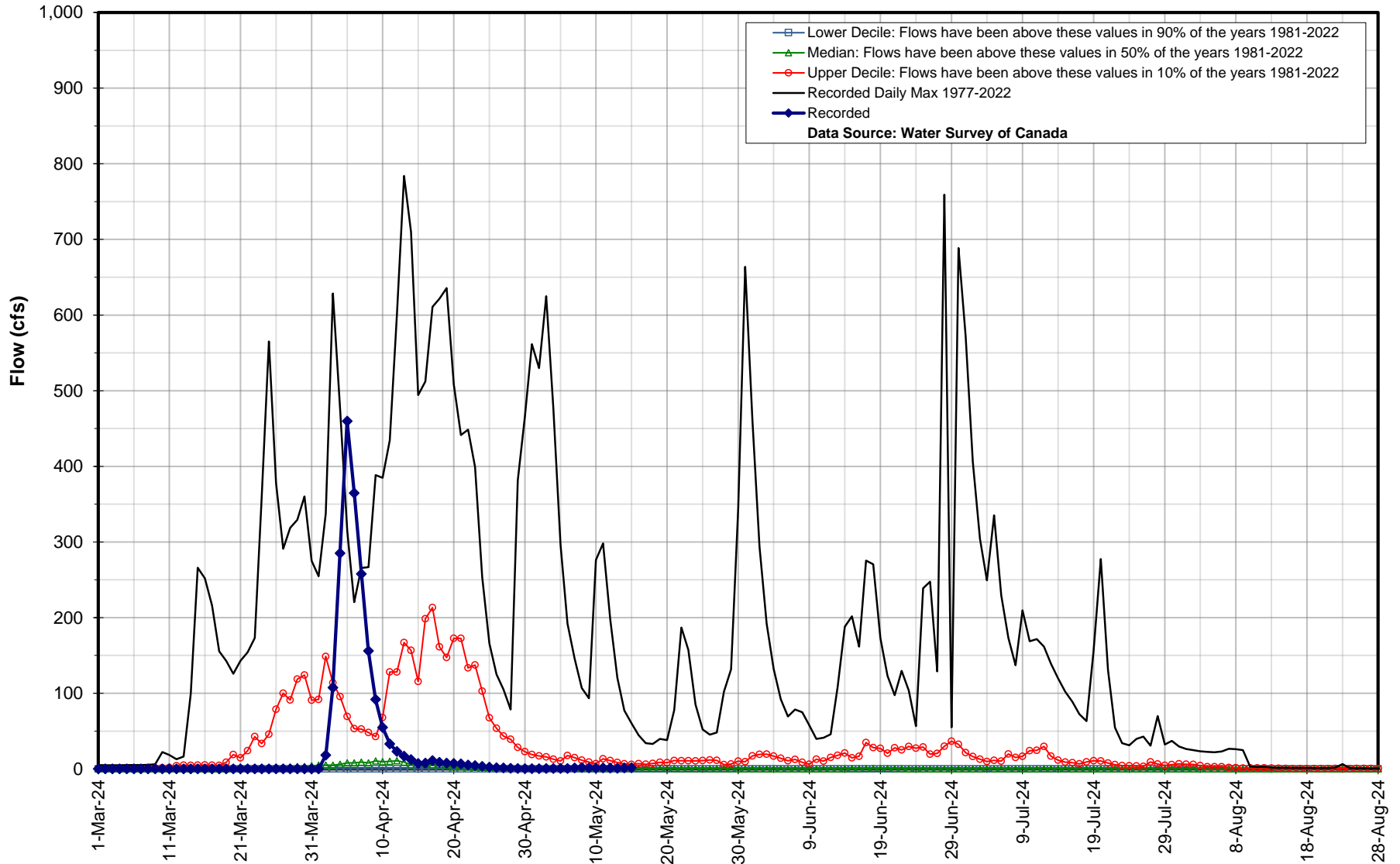
— Lower Decile: Flows have been above these values in 90% of the years 1981-2022
— Median: Flows have been above these values in 50% of the years 1981-2022
— Upper Decile: Flows have been above these values in 10% of the years 1981-2022
— Recorded Daily Max 1953-2022
— Recorded
Data Source: Water Survey of Canada

Hydrologic Forecast Centre - Manitoba Transportation and Infrastructure

Scissor Creek near McAuley

May 15, 2024 : 2 cfs

05ME009



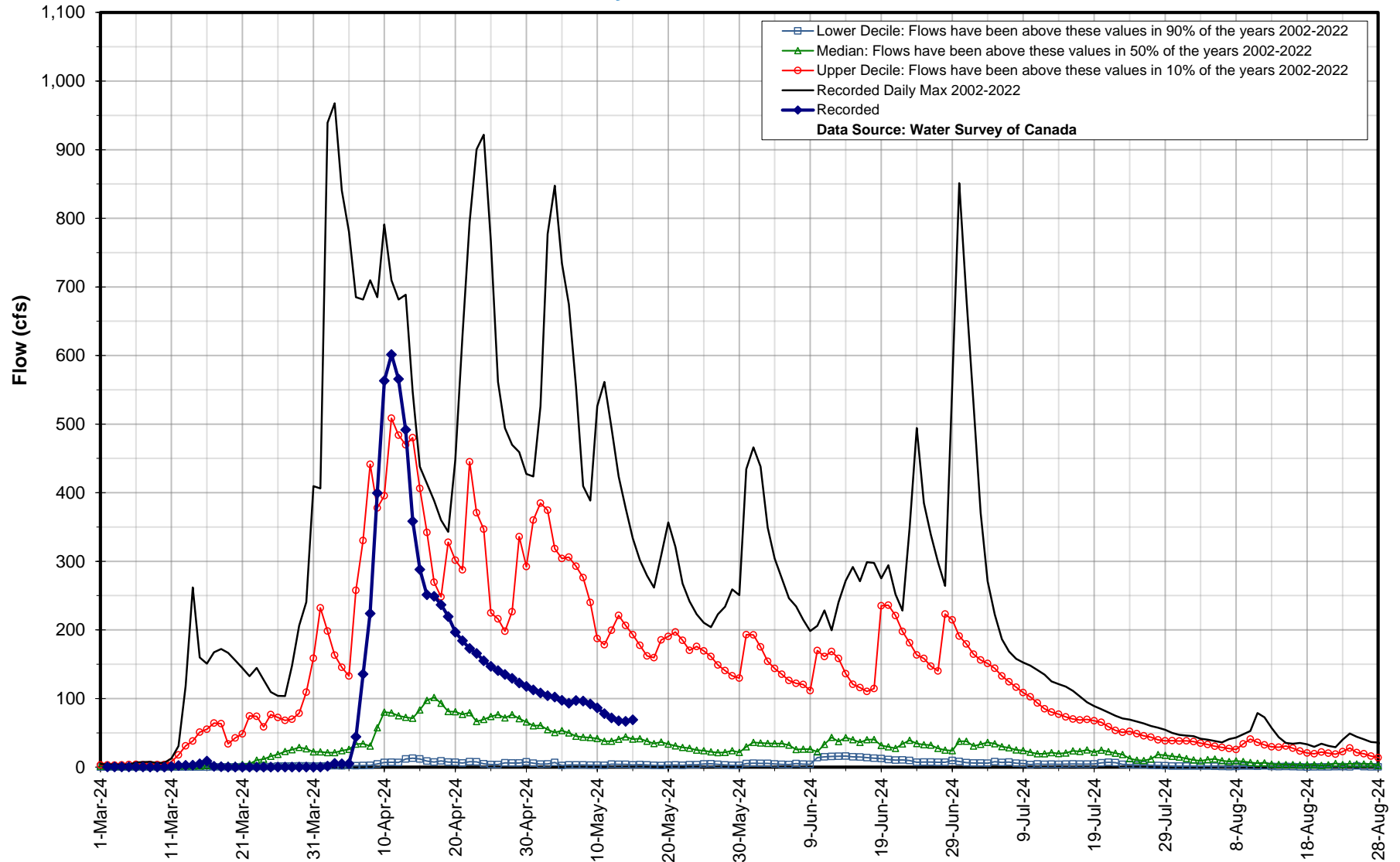
— Lower Decile: Flows have been above these values in 90% of the years 1981-2022
— Median: Flows have been above these values in 50% of the years 1981-2022
— Upper Decile: Flows have been above these values in 10% of the years 1981-2022
— Recorded Daily Max 1977-2022
— Recorded
Data Source: Water Survey of Canada

Hydrologic Forecast Centre - Manitoba Transportation and Infrastructure

Silver Creek near Binscarth

May 15, 2024 : 69 cfs

05ME010

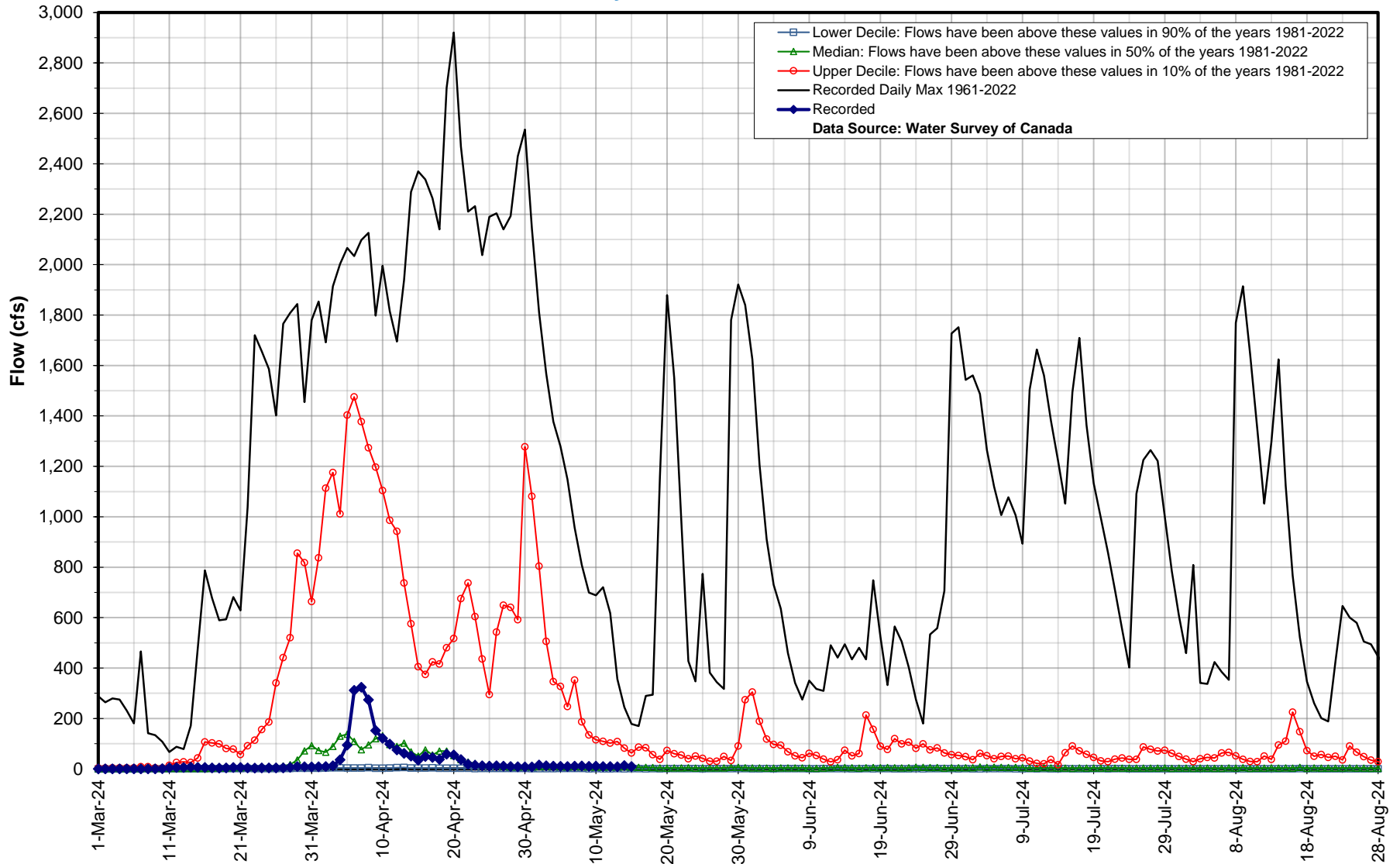


Hydrologic Forecast Centre - Manitoba Transportation and Infrastructure

Sturgeon Creek at St. James

May 15, 2024 : 10 cfs

05MJ004



— Lower Decile: Flows have been above these values in 90% of the years 1981-2022
— Median: Flows have been above these values in 50% of the years 1981-2022
— Upper Decile: Flows have been above these values in 10% of the years 1981-2022
— Recorded Daily Max 1961-2022
— Recorded
Data Source: Water Survey of Canada