

Design Study for New Structures Over Assiniboine River and Long Lake Drain and Realignments of PTH 26 and PR 248

STAKEHOLDER MEETINGS
NOVEMBER 2023

Manitoba 

Welcome

- Thank you for participating in the preliminary and functional design study for the new structures over the Assiniboine River and Long Lake Drain and the associated realignment of PTH 26 and PR 248.
- The image at right illustrates the general study area.
- The following slides provide an overview of the study process and objectives.
- The intent of this engagement is to:
 - Introduce the project
 - Offer an opportunity for stakeholders to provide early insight before alignment and design alternatives are developed
 - Share important details regarding the next steps for this project



Project Team



Manitoba Transportation and Infrastructure (MTI)

Project Owner

Colin Spikula, MTI Project Manager



WSP

Engineering Consultant

Jim Lukashenko, WSP Project Manager



Landmark Planning & Design

Public and Stakeholder Engagement Consultant

Donovan Toews, Engagement Lead



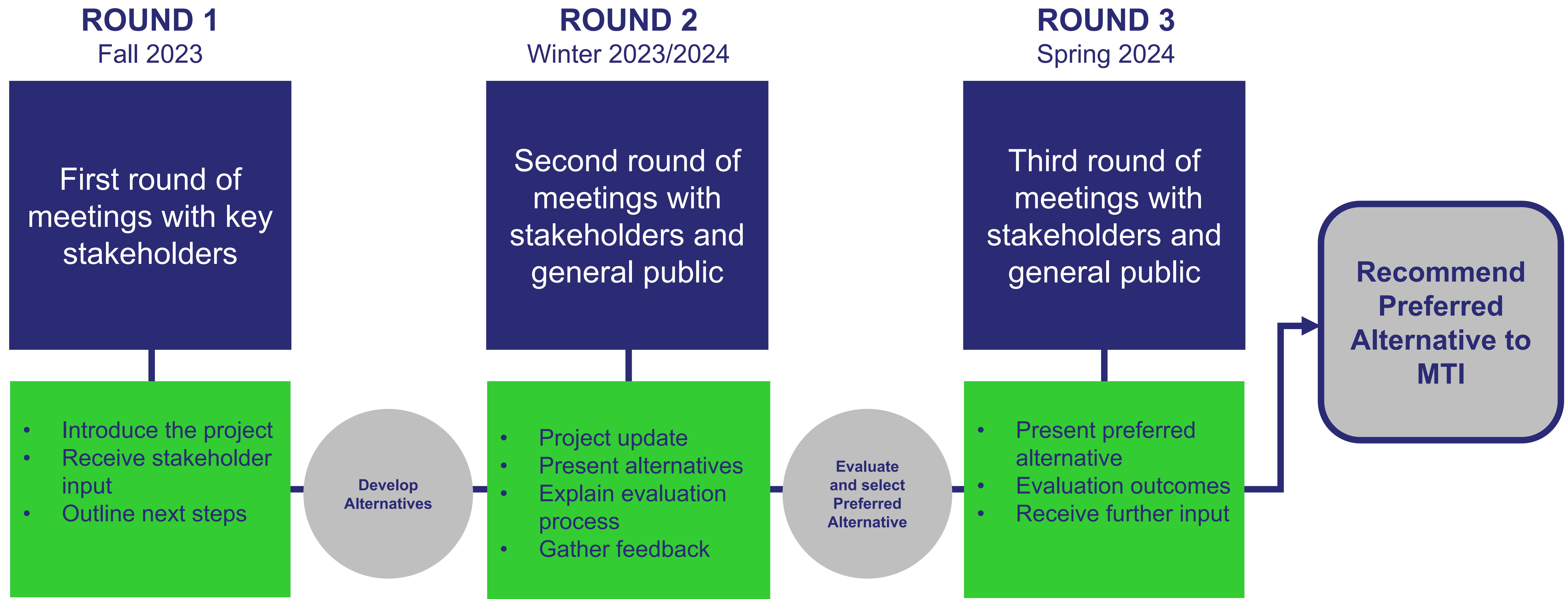
Background

- The objective of the project is to prepare a design concept to replace the aging structures over Assiniboine River and Long Lake Drain and improve the alignments of PTH 26 and PR 248.
- The existing truss bridge over the Assiniboine River was constructed in 1948 and the timber bridge over the Long Lake Drain was constructed in 1928. Both bridges are approaching the end of their services lives and require replacement.
- This study will take approximately 12 to 18 months to complete and will be followed by a more detailed design study for a preferred alternative



Engagement Process

The following diagram illustrates the engagement process:




WE ARE HERE

Stakeholders

There are many people and groups that may be interested in or affected by this project:

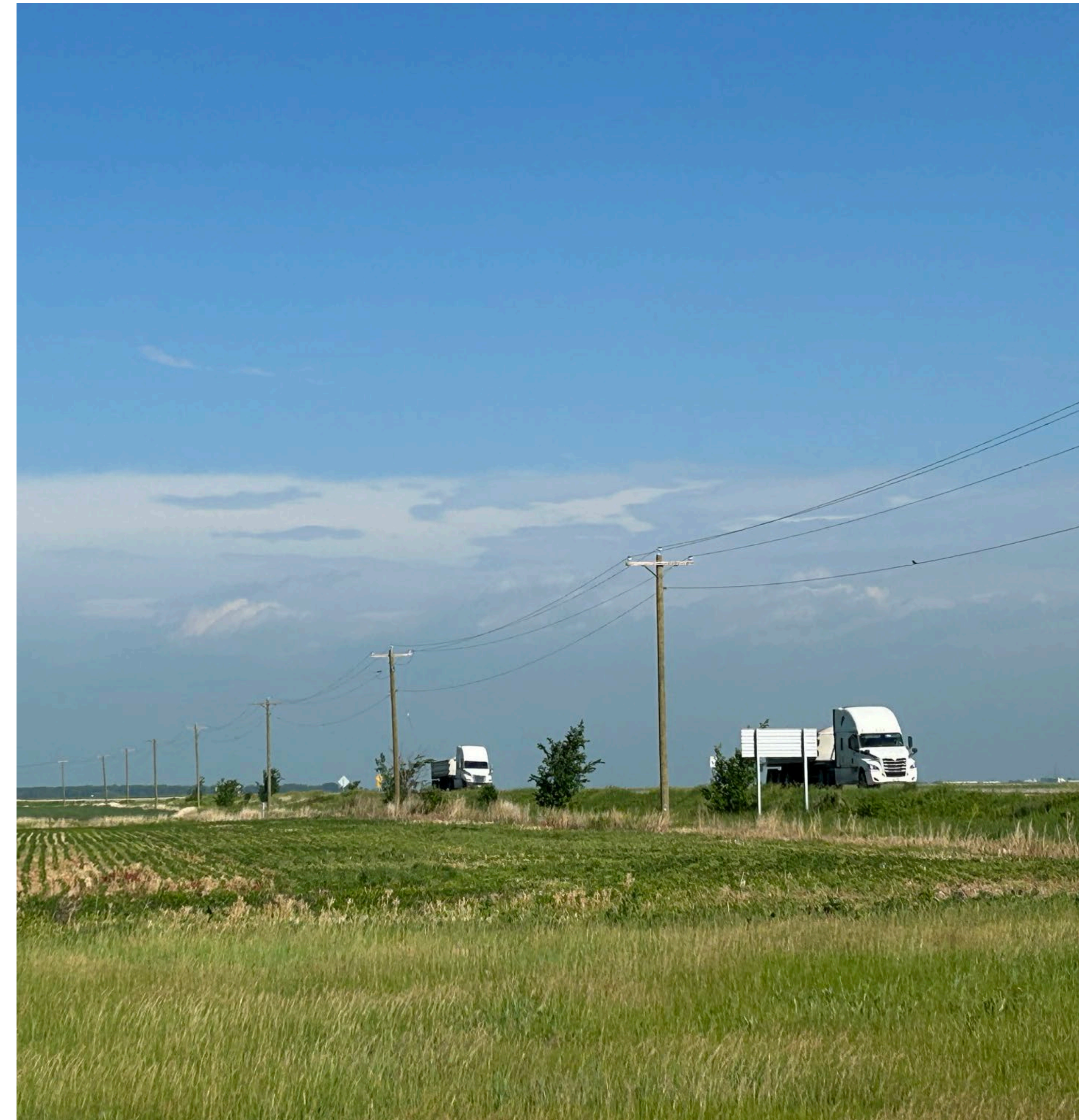
- RM of St. Francois Xavier
- RM of Cartier
- Residents / landowners
- Agricultural operations
- Business owners
- Local school divisions
- Utilities in the vicinity
- Manitoba Trucking Association
- Local Trail or Recreation Groups
- Emergency Services Providers
- Others as identified throughout the engagement process



Study Considerations

The study team needs to consider a number of factors in the design process, including;

- Safety and collision history
- Environmental impacts
- Local land use and access patterns
- Right-of-way requirements
- Active transportation requirement
- Cultural or heritage considerations
- Emergency access
- Wildlife
- Traffic projections
- Water crossings and navigation requirements
- Utilities
- Capital and maintenance costs
- Other factors that others may identify through the engagement process



Study Area Map

This map illustrates the location of the Baie St. Paul Bridge over the Assiniboine River on PR 248 and the Long Lake Drain Bridge on PTH 26



Possible Alternatives



Key Questions

- What specific items do you feel the study team should be aware of before identifying and evaluating alternatives?
- How do you feel you or your organization/group may be impacted or may benefit from this project?

Your feedback will help the team identify topics of importance and specific information that can be incorporated into the evaluation of alignment alternatives



Next Steps

- Thank you for participating in this process
- We will review the feedback from today's meeting and work to incorporate it into the early stages of the study
- We will conduct a series of follow-up engagement meetings in Winter 2023/2024
- In these meetings we will present alternatives for structure replacements and potential roadway re-alignments before evaluating and selecting a preferred alternative

Thank You. Questions?

Thank you for attending tonight's stakeholder meeting. Your feedback is important to us, so please fill out an online comment sheet at the following link:

<https://www.surveymonkey.com/r/PR248andPTH26>

If you have any further questions, please contact:

Donovan Toews, RPP, MCIP
Landmark Planning & Design

dtoews@landmarkplanning.ca

204.453.8008