

Bridge over Red River Floodway on PR 200



Purpose and Need

The existing bridge over the Red River Floodway on PR 200 was constructed in 1965. Due to its deteriorated condition, the bridge requires rehabilitation to maintain serviceability over the next 25 to 40 years.

The major rehabilitation of the bridge will provide a greater total roadway width with wider shoulders on each side of the travel lanes. A new parking lot will be constructed to provide access to Duff Roblin Parkway Trail and a new low level crossing will provide active transportation access across the Floodway.

Proposed Schedule

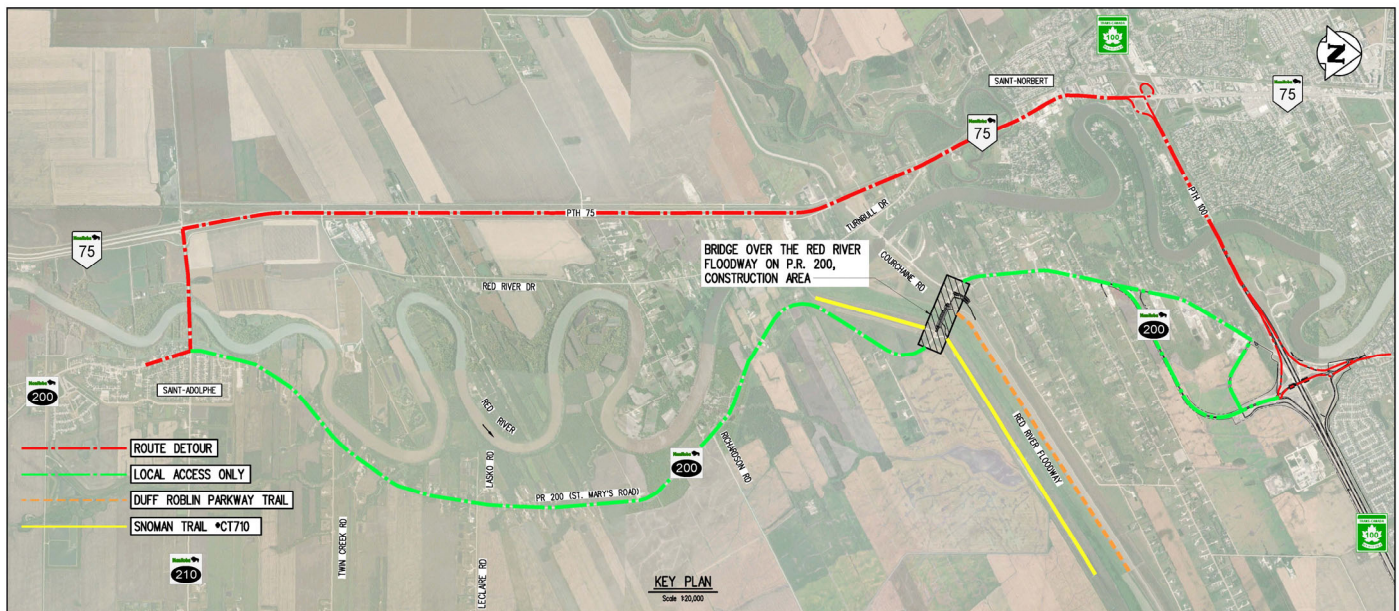
Construction is proposed to begin in Spring 2025 and be complete in Fall 2026. The existing bridge is anticipated to close to traffic in late Summer 2025 and will remain closed for the duration of the construction period.



Construction Staging and Detours

Due to the width of the existing bridge, staged construction of the bridge is not possible while maintaining acceptable lane widths. The bridge will remain closed during construction and traffic will be redirected with a route detour.

For the public's safety, the Duff Roblin Parkway Trail and Snoman Trail #CT710 will be closed within the project limits for the duration of the construction period. Access to the Duff Roblin Parkway Trail is anticipated to be available via the new parking lot at the northeast corner of the site in Fall 2025.



If you have any questions about this project, please contact:

Lance Fast, P.Eng.

Bridges and Highway Structures | Engineering and Technical Services Division

Manitoba Transportation and Infrastructure

600 - 215 Garry St | Winnipeg MB R3C 3P3 | (204) 599-0684