

## Project Introduction

The intersection of PTH 5 and PTH 68, near Ste. Rose du Lac, Manitoba, is on a curve and needs to be upgraded to accommodate increased traffic and improve safety. The project involves the Functional and Detailed Design of the PTH 5 and 68 intersection improvements and the paving of 1.8 km on PTH 68 – East of the PTH 5 and PTH 68 junction.

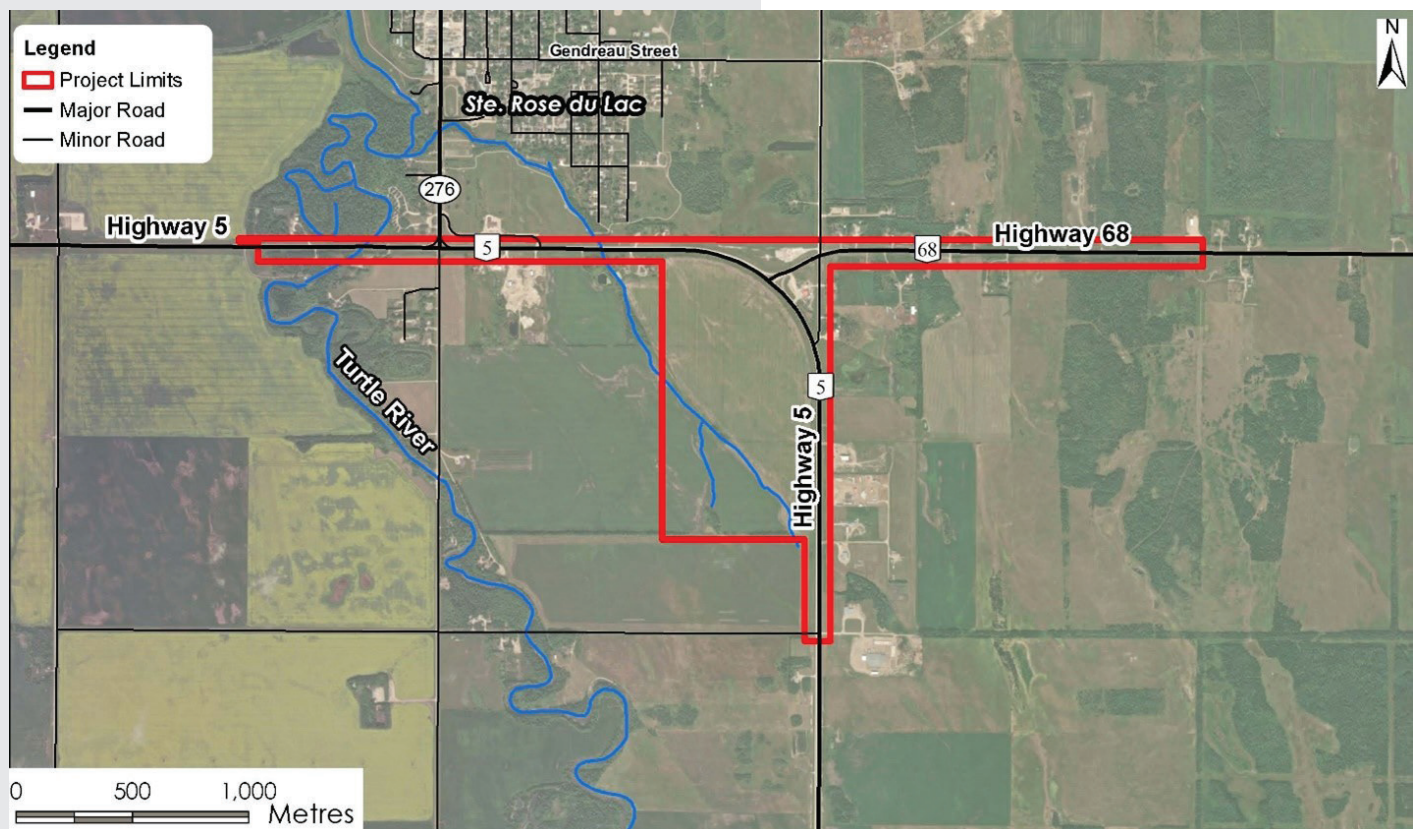
Functional design occurs early in the design process where the roadway alignment alternatives are developed, based on traffic patterns, collision history, soil conditions, drainage, environmental considerations, and input from stakeholders, Indigenous Rights Holders, and the public. Alternative alignments are evaluated, and the preferred alternative is selected based on several criteria.

## Project Area

The project study area includes the intersection of PTH 5 and PTH 68, and 1.8 km of PTH 68, east of the PTH 5 and PTH 68 intersection.

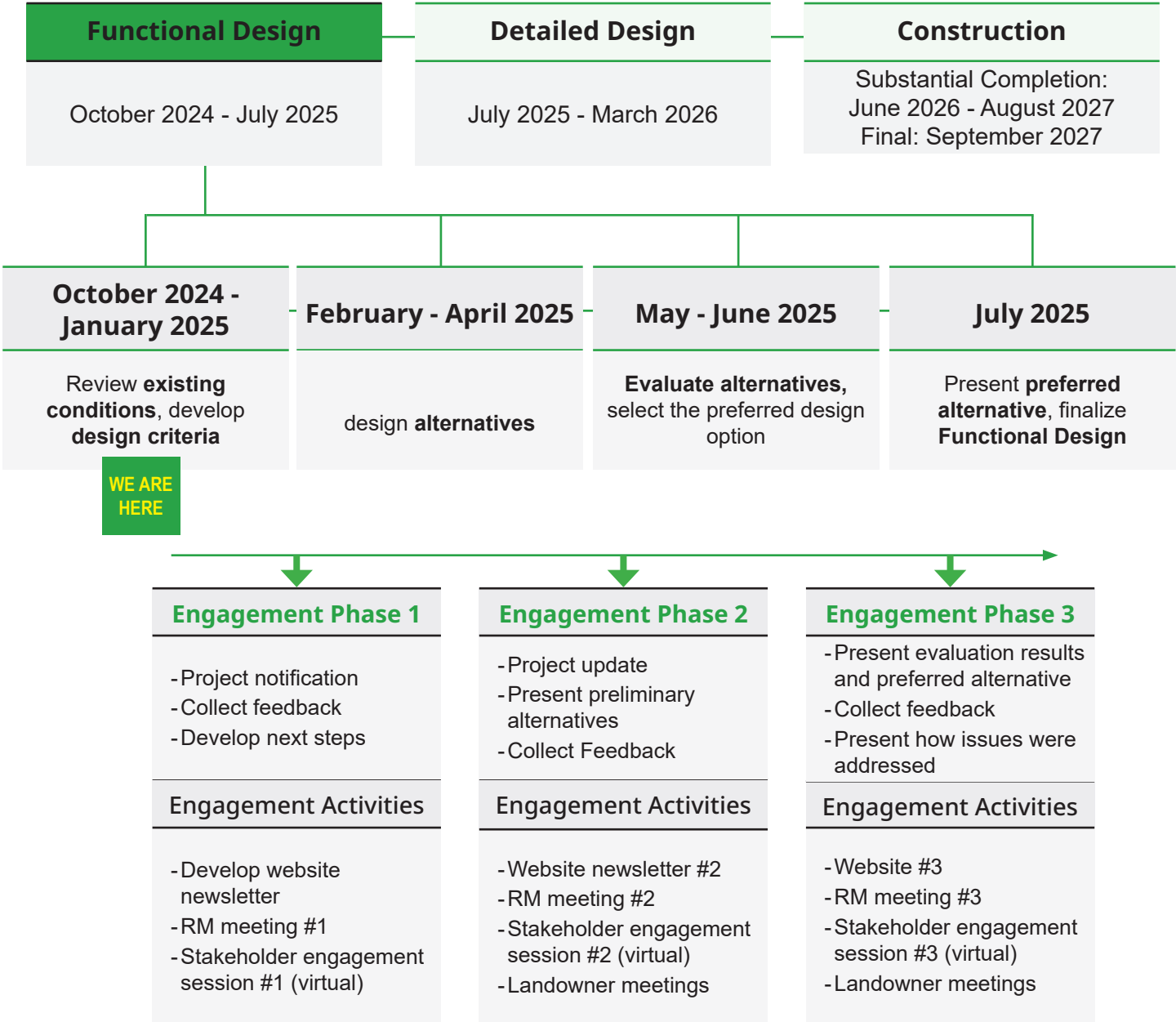
Alignment alternatives will be designed within the existing road allowance based on key considerations.

Selection of the preferred alignment will be based on design criteria, land requirements, utilities, cost, and potential effects on Rights Holders and stakeholders.



# Project Timeline

We are currently in the first round of engagement for the project, the goal of which is to introduce the project and hear feedback for consideration during the development and evaluation of the alternatives. We look forward to presenting the design alternatives during the second round of engagement in spring 2025.



## Questions or Comments?

Please contact:  
**Lauren Stead**  
lauren.stead@stantec.com

