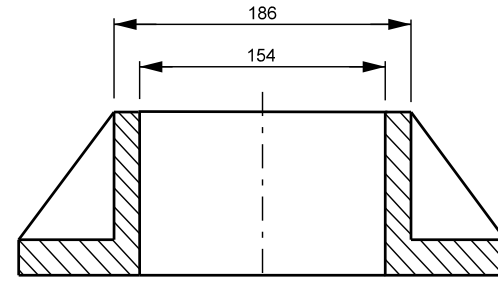
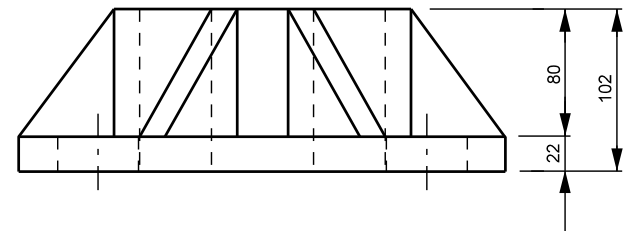


TOP VIEW



SECTION 'A-A'



PLAN VIEW

- NOTES:
1. CAST BASEPLATES FROM ALUMINUM ALLOY 135 T6.
 2. WELD MACHINE PORTIONS OF CASTING.
 3. ROUND ALL CORNERS.
 4. MINIMUM GUSSET RIBS OF 13 mm.
 5. MINIMUM BASE THICKNESS OF 22 mm.
 6. MINIMUM 13 mm THICK FLANGE.

REVISIONS		DESCRIPTION	BY
DATE	DESCRIPTION	BY	
10-2007	UPDATES	DC	
02-2016	DETAILS ADDED	LB	



CAST ALUMINUM BASE PLATE FOR 152mm Ø
POST w/ SLOTTED HOLES (SIGNAL POLE)

ORIGINAL
APPROVED BY: _____

SCALE:	N.T.S.
DATE:	MAY 98
PREP BY:	LMK
SHEET:	1 OF 1
TE-230H	