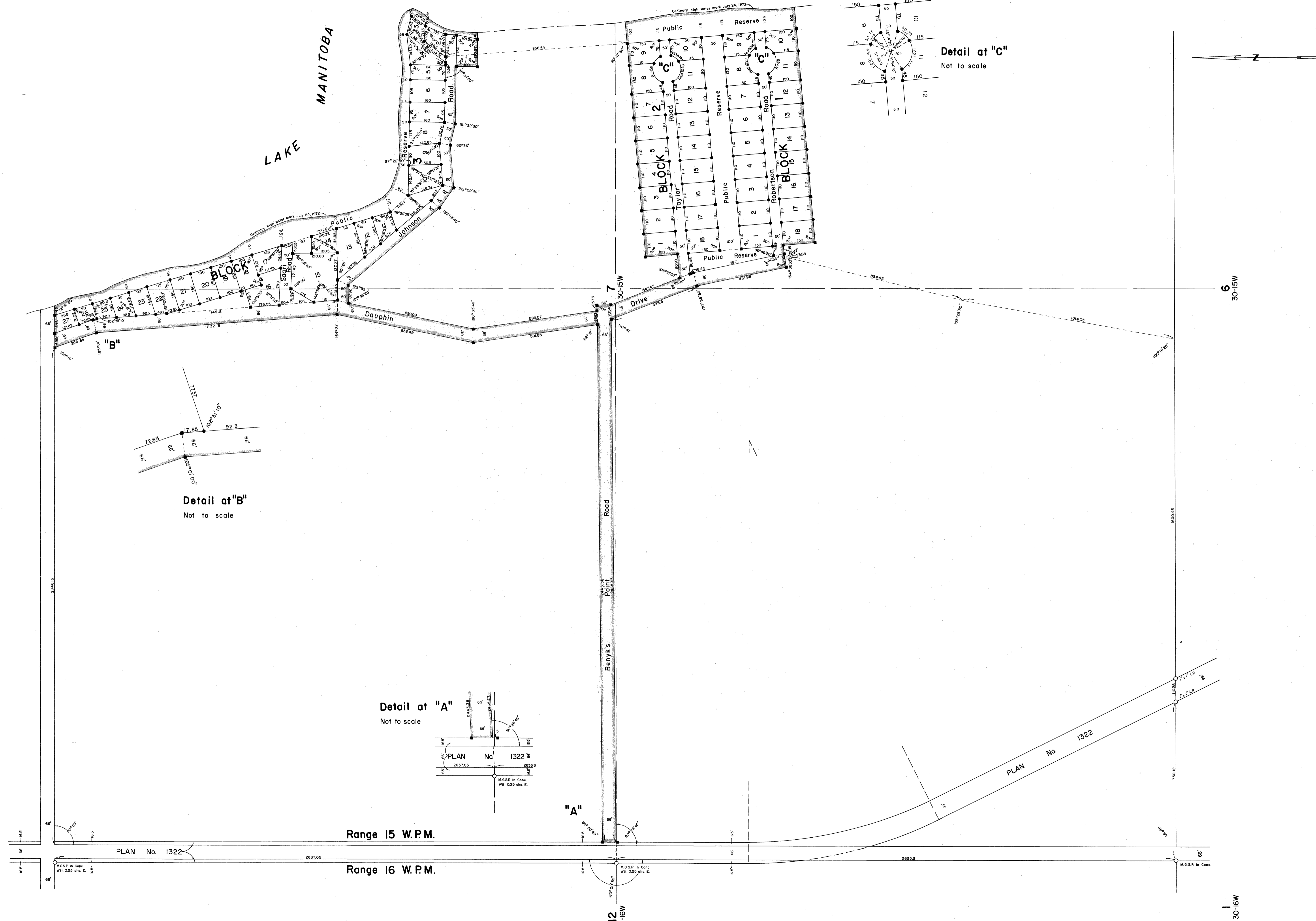


10658w

8R



PLAN OF SUBDIVISION
IN
Frac. Sec. 7, Tp. 30, Rge. 15 W.P.M.
MANITOBA

Scale : 1 inch = 200 feet

NOTES
 All distances are in feet or decimals of a foot.
 Survey monuments found on the ground are described and shown thus: ○
 Iron Posts 1" x 1" x 36" marked M.L.S. are placed at all points shown thus: ■
 Iron Posts 3/4" x 3/4" x 30" marked M.L.S. are placed at all points shown thus: ●
 Plan referred to is on record in the Dauphin Land Titles Office.
 Land affected by the registration of this plan is shown bordered pink hereon.

AFFIDAVIT
 I, Norman Leroy Peterson, of the City of Winnipeg, Manitoba Land Surveyor, make oath and say that I did personally superintend the survey represented by this plan, that the survey was made between February 13 and July 27, 1972, and that the survey and plan are correct and true to the best of my knowledge and belief.

Sworn before me at Winnipeg
 this 16th day of January A.D. 1973
N. Peterson M.L.S.
A. Lapinski
 Commissioner for Oaths in and for the Province of Manitoba
 My Commission expires March 16, 1974

APPROVALS

Approved and Confirmed
 January 16, 1973
R. J. [Signature]
 Director of Surveys

Approved this 17th day of Feb. A.D. 1973.
[Signature]
 Director of Municipal Planning

Approved
 for Minister of Mines, Res. & Env. Mngt.
[Signature]

Approved
 this 15th day of June A.D. 1973
D. W. Lemont
 Registrar General

REGISTRATION
 Entered and Registered in the
 Dauphin Land Titles Office
 this 11th day of July A.D. 1973
 at 2.10 p.m. as PLAN No 2104
[Signature]
 District Registrar

LAND TITLES OFFICE
 JUL 11 1973
 2.10
 DAUPHIN, MAN.

EXAMINER OF SURVEYS
 Approved
 valid for 12 months unless registered
 this 8th day of June A.D. 1973
[Signature]
 Examiner of Surveys