

Filed in the Office of the Director of Surveys at Winnipeg this 8 day of February A.D. 1980 as Plan No. 18439  
Director of Surveys

### PLAN OF SUBDIVISION OF PART OF FRACTIONAL N. 1/2 SEC. 15 AND FRACTIONAL S. 1/2 OF SEC. 22, T.P. 26, RGE. 6 E.P.M. AND PART OF GOVERNMENT ROAD ALLOWANCE (NOW CLOSED)

MANITOBA  
SCALE: 1:1000

**NOTES:**  
ALL DISTANCES ARE IN METRES AND DECIMALS THEREOF AND MAY BE CONVERTED TO FEET BY MULTIPLYING BY 3.28084.  
SURVEY MONUMENTS FOUND ON THE GROUND ARE DESCRIBED AND SHOWN. THIS PLAN SHOWS IRON POSTS 0.025 & 0.034 MARKED M.L.S. ARE PLANTED AT ALL POINTS SHOWN. THIS PLAN SHOWS IRON POSTS 0.019 & 0.019 OF VARYING LENGTHS ARE PLANTED AT ALL POINTS SHOWN. THIS PLAN.  
ALL PLANS REFERRED TO ARE ON RECORD AT THE WINNIPEG LAND TITLES OFFICE.  
LAND AFFECTED BY THE REGISTRATION OF THIS PLAN IS BORDERED THUS: \_\_\_\_\_

**AFFIDAVIT:**  
I, JAMES EDWARD BAILIE, OF THE CITY OF WINNIPEG, MANITOBA, LAND SURVEYOR, MAKE OATH AND SAY THAT I DID PERSONALLY SUPERINTEND THE SURVEY REPRESENTED BY THIS PLAN, THAT THE SURVEY WAS MADE BETWEEN THE DATES OF JANUARY 18th TO FEBRUARY 28th, 1979, AND THAT THE SURVEY AND PLAN ARE CORRECT AND TRUE TO THE BEST OF MY KNOWLEDGE AND BELIEF.  
*James Bailie*  
M.L.S.

SWORN TO BEFORE ME  
AT THE CITY OF WINNIPEG  
THIS 14th DAY OF MARCH, A.D. 1979  
*R. Shuter*  
A COMMISSIONER FOR OATHS IN AND FOR THE PROVINCE OF MANITOBA.  
MY COMMISSION EXPIRES OCTOBER 18th, 1979.

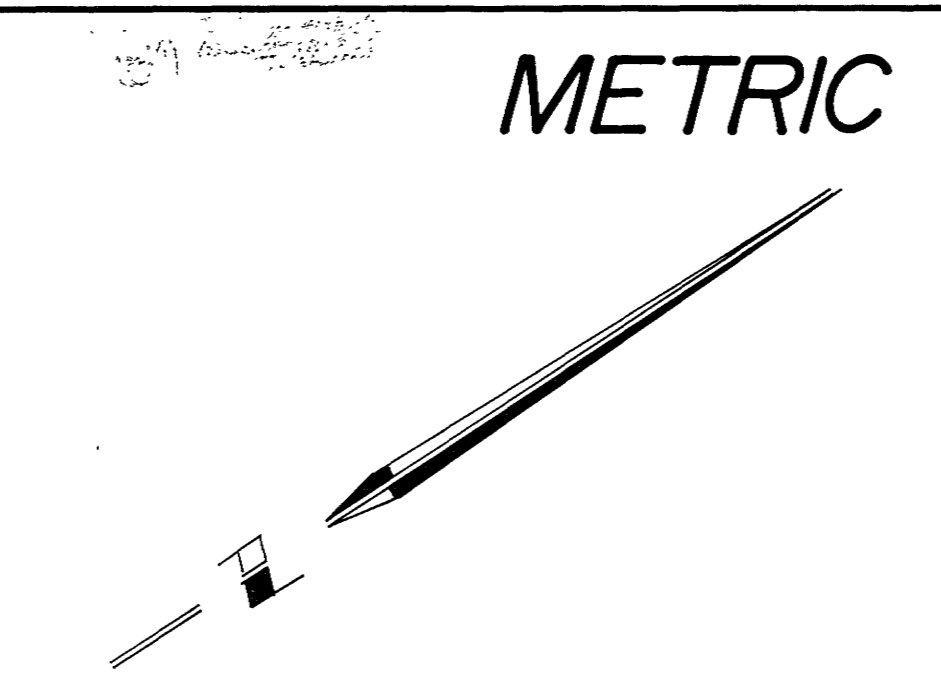
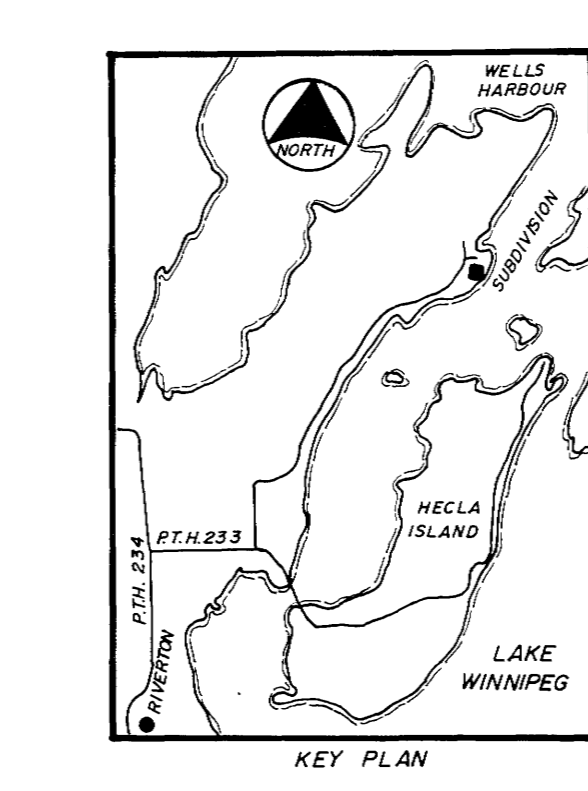
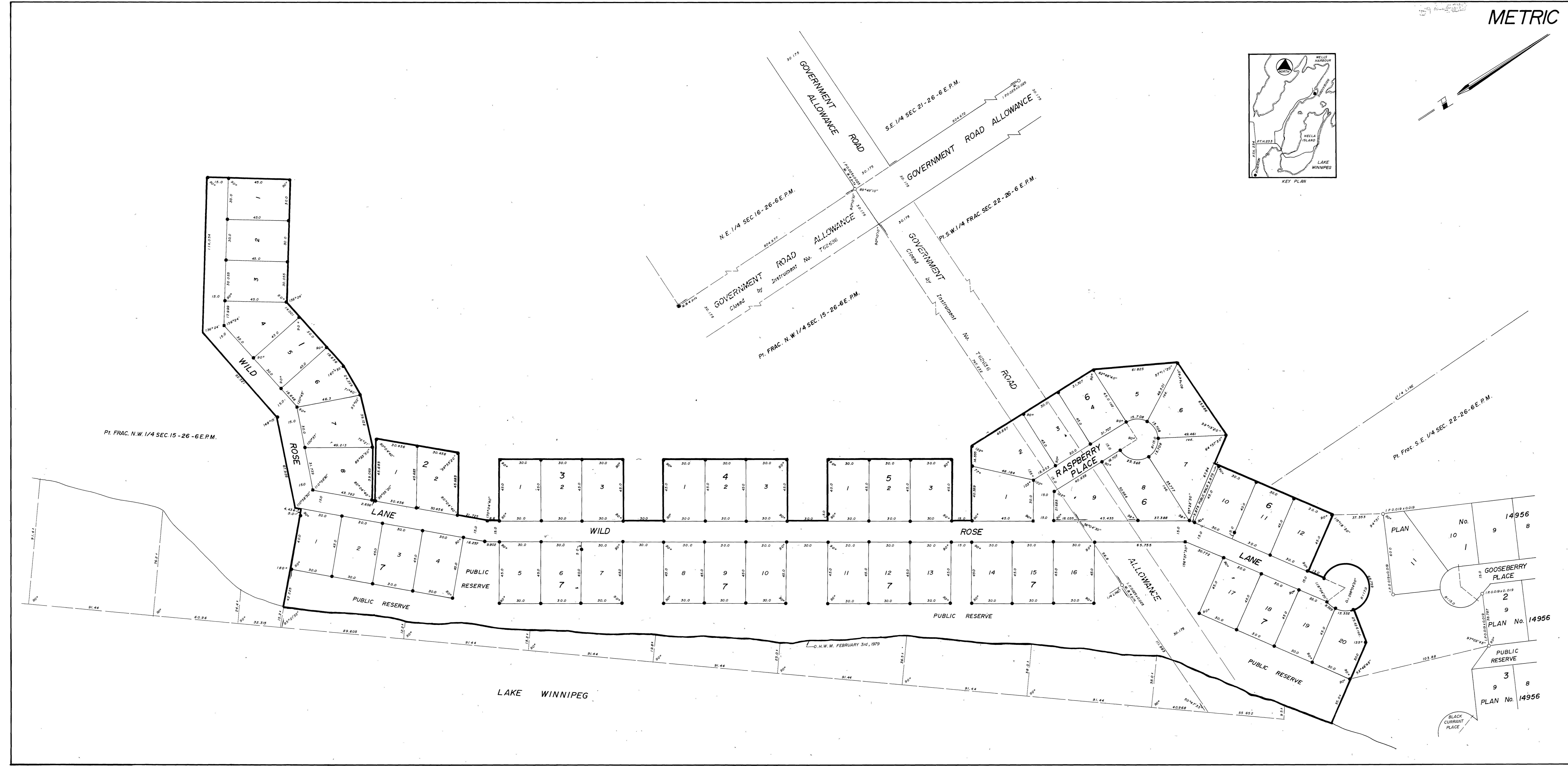
**APPROVALS:**  
APPROVED AND CONFIRMED THIS 11th DAY OF JUNE, A.D. 1979  
*R. Shuter*  
DIRECTOR OF SURVEYS  
APPROVED AS TO PLANNING THIS 22nd DAY OF JUNE, A.D. 1979  
*R. Shuter*  
MINISTER OF MINES, NATURAL RESOURCES AND ENVIRONMENT  
APPROVED THIS 30th DAY OF JANUARY, A.D. 1980  
*R. E. Savelle*  
FOR REGISTRAR-GENERAL

THIS APPROVAL IS VALID FOR 12 MONTHS UNLESS REGISTERED.  
APPROVED THIS 30th DAY OF JANUARY, A.D. 1980  
*R. E. Savelle*  
EXAMINER OF SURVEYS  
RE-APPROVED \_\_\_\_\_  
RE-APPROVED \_\_\_\_\_

ENTERED AND REGISTERED IN THE WINNIPEG LAND TITLES OFFICE THIS 30th DAY OF JANUARY, A.D. 1980 AS PLAN No. 14979  
*R. E. Savelle*  
DISTRICT REGISTRAR

JAMES E. BAILIE  
LAND SURVEYORS AND CIVIL ENGINEERS  
21479 BUFFALO PLACE  
WINNIPEG, MANITOBA.

11-p-78(b)



METRIC