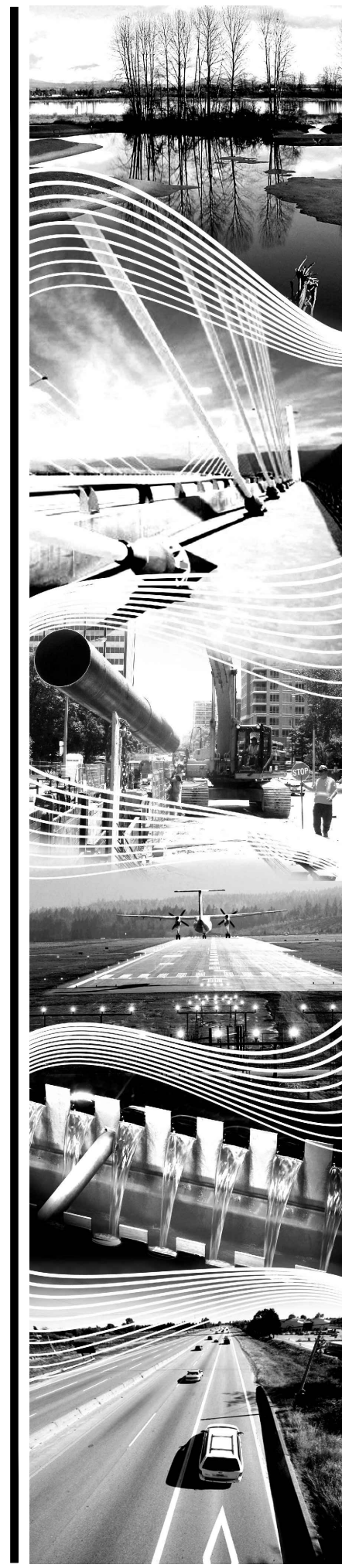


DRAWING INDEX				
SHEET	DRAWING NAME	REVISION	DRAWING TITLE	DRAWING DESCRIPTION
GENERAL				
1	4981-00-g-001	1	COVER	
CIVIL				
2	4981-00-c-001	1	OVERALL LOCATION PLAN	NOTES AND LEGEND
3	4981-00-c-101	1	OVERALL SITE PLAN	
4	4981-00-c-102	1	SITE PLAN	NEW CELL #4
5	4981-00-c-301	2	CELL #4 SECTIONS	
6	4981-00-c-501	1	TYPICAL DETAILS	
7	4981-00-c-502	1	PROFILE DETAILS	

RM OF WEST INTERLAKE VILLAGE OF ASHERN WASTEWATER LAGOON EXPANSION

20174981-00
Record Drawings

P:\20174981-00_Ashern_Lagoon\Working_Dwgs\900_Project_Standards\4981-00-g-001.dwg
DATE: 2019-02-06; Chris Houston



West Interlake
RURAL MUNICIPALITY



RM OF WEST INTERLAKE
VILLAGE OF ASHERN
WASTEWATER LAGOON
EXPANSION

20174981-00

THE INFORMATION CONTAINED ON THIS DRAWING, OTHER THAN CHANGES MADE BY ASSOCIATED ENGINEERING (SASK) LTD., ORIGINATED FROM SOURCES OTHER THAN THE DESIGN PROFESSIONAL AND ASSOCIATED ENGINEERING (SASK) LTD. DOES NOT WARRANT OR REPRESENT THAT SUCH INFORMATION IS ACCURATE OR REPRESENTS THE ORIGINAL DESIGN AS CONTAINED IN THE CONTRACT DOCUMENTS.

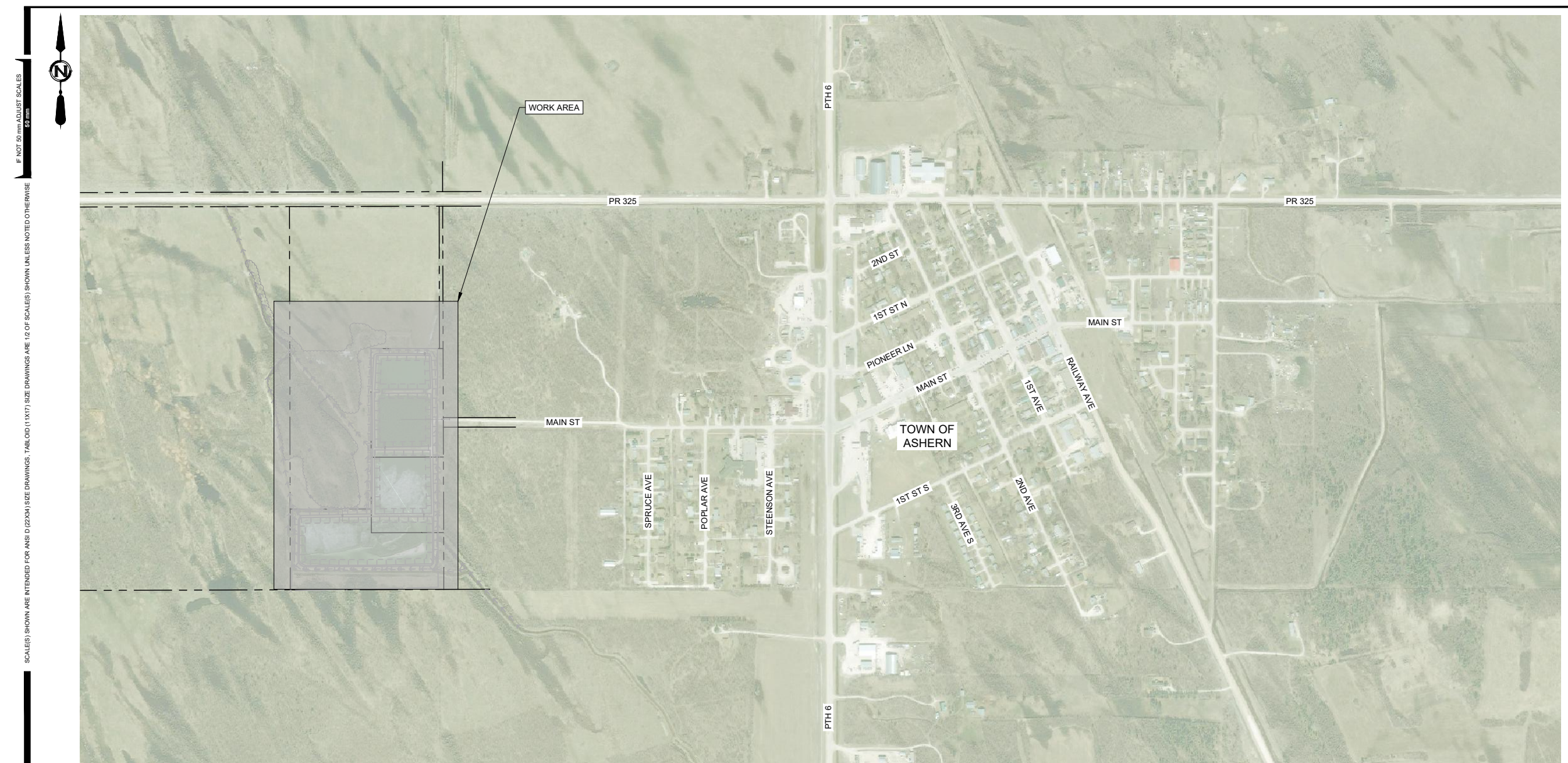
REV	DATE	DESIGN	DRAWN	DESCRIPTION
1	2019JAN08	K. ANDERSON	C. HOUSTON	RECORD DRAWINGS
0	2018JUN18	K. ANDERSON	T. DYCHKO	ISSUED FOR TENDER/CONSTRUCTION

DRAWING	REVISION	SHEET
4981-00-G-001	1	1 / 7

ORIGINAL SEALED BY:
K. ANDERSON, P. ENG.

DATED: JUNE 14, 2018

THE INFORMATION CONTAINED ON THIS DRAWING, OTHER THAN CHANGES MADE BY ASSOCIATED ENGINEERING (SASK) LTD., ORIGINATED FROM SOURCES OTHER THAN THE DESIGN PROFESSIONAL AND ASSOCIATED ENGINEERING (SASK) LTD. DOES NOT WARRANT OR REPRESENT THAT SUCH INFORMATION IS ACCURATE OR REPRESENTS THE ORIGINAL DESIGN AS CONTAINED IN THE CONTRACT DOCUMENTS.



1 PLAN 1:5000
OVERALL SITE

LINETYPES

	EXISTING	PROPOSED
FENCE	— x — x —	— x — x —
BOTTOM OF BANK	- - - - -	- - - - -
TOP OF BANK		
HEDGE	~~~~~	~~~~~
BUILDING	▭ ▭ ▭	▭ ▭ ▭
PARCEL / LOT LINE	- - - - -	- - - - -
EASEMENT	- - - - -	- - - - -
ROAD ROW	— — — — —	— — — — —
GAS	— G —	— G —
WATER MAIN	— W —	— W —
RAW WATER	— RW —	— RW —

SYMBOLS

	EXISTING	PROPOSED
FIRE HYDRANT	⊕	⊕
MANHOLE	⊙	⊙
TEE FLANGE	⊥	⊥
END CAP / PLUG	⊥	⊥
GATE VALVE	⊥	⊥
WATER LEVEL	∇	∇
REDUCER	∇	∇
BORE HOLE	⊕ BH	⊕ BH
SPOT ELEVATION	EL1000	100.000
SLOPE	% 1/2	% 1/2

HATCH PATTERNS

CONCRETE	RIP-RAP / DRAIN ROCK	EARTH / NATIVE MATERIAL
CLAY LINER	COMPACTED FILL	

- NOTES:**
- ALL MATERIALS AND INSTALLATION PRACTICES SHALL CONFORM TO PROJECT SPECIFICATIONS.
 - DECIMALIZED NUMBERS INDICATE METERS AND WHOLE NUMBERS INDICATE MILLIMETERS.
 - LOCATION OF UNDERGROUND SERVICES AS SHOWN ARE BASED ON THE BEST INFORMATION AVAILABLE, BUT NO GUARANTEE IS GIVEN THAT ALL EXISTING SERVICES ARE SHOWN OR THAT THE GIVEN LOCATIONS ARE EXACT.
 - CONTRACTOR MUST CONFIRM WITH THE INDIVIDUAL UTILITIES FOR EXISTENCE AND EXACT LOCATIONS OF ALL THE SERVICES PRIOR TO CONSTRUCTION.
 - CONTRACTOR MUST EXPOSE EXISTING INFRASTRUCTURE AT THE PROPOSED TIE-IN LOCATIONS TO ALLOW SITE ENGINEER TO VERIFY SIZE, MATERIAL AND INVERTS PRIOR TO CONSTRUCTION OF TIE-INS.
 - ALL SITE LAYDOWN AREAS SHALL BE AS NOTED IN THE SPECIFICATIONS AND APPROVED BY THE OWNER AND ENGINEER.
 - ALL AREAS SUBJECT TO CONSTRUCTION OPERATIONS SHALL BE RESTORED TO THE CONDITION IN WHICH THEY EXISTED PRIOR TO CONSTRUCTION. THIS INCLUDES, BUT IS NOT LIMITED TO, PAVEMENT REPAIRS, RE-GRAVELLING, TRENCH SETTLEMENT CORRECTION AND RE-SEEDING OF GRASSSED AREAS. RESTORATION SHALL CONFORM TO MUNICIPAL STANDARDS.
 - CONTRACTOR SHALL MAINTAIN THE FOLLOWING INSTALLATION DISTANCES:
 - SEPARATION BETWEEN POTABLE WATER AND RAW WATER OR WASTE WATER:
 - HORIZONTAL = 3.0 m
 - VERTICAL = 0.45 M, POTABLE WATER ABOVE.
 - MINIMUM BURY DEPTH:
 - WITHIN CITY, TOWN AND VILLAGE LIMITS = 2.75 m
 - RURAL AREAS = 2.4 m
 - CROSSINGS (ROAD, DRAIN, ETC.) = 3.0 m
 - INSTALLATIONS WITH LESS THAN MINIMUM COVER SHALL BE INSULATED AS PER SPECIFICATIONS.
 - WHERE THE PROPOSED ALIGNMENT CROSSES PTHS, PR'S, DEVELOPED ROAD ALLOWANCES, PRIVATE LANES, WATER RUNS AND WETLANDS, A TRENCHLESS METHOD OF INSTALLATION SHALL BE USED.

REV	DATE	DESIGN	DRAWN	DESCRIPTION
1	2018JAN08	K. ANDERSON	C. HOUSTON	RECORD DRAWINGS
0	2018JUN18	K. ANDERSON	T. DYCHKO	ISSUED FOR TENDER/CONSTRUCTION



RM OF WEST INTERLAKE
VILLAGE OF ASHERN

WASTEWATER LAGOON
EXPANSION

20174981-00

SCALE: AS SHOWN

CIVIL
OVERALL LOCATION PLAN
NOTES AND LEGEND

DRAWING	REVISION	SHEET
4981-00-C-001	1	2 / 7



West Interlake
 RURAL MUNICIPALITY

ORIGINAL SEALED BY:
 K. ANDERSON, P. ENG.

DATED: JUNE 14, 2018

THE INFORMATION CONTAINED ON THIS DRAWING, OTHER THAN CHANGES MADE BY ASSOCIATED ENGINEERING (SASK) LTD., ORIGINATED FROM SOURCES OTHER THAN THE DESIGN PROFESSIONAL AND ASSOCIATED ENGINEERING (SASK) LTD. DOES NOT WARRANT OR REPRESENT THAT SUCH INFORMATION IS ACCURATE OR REPRESENTS THE ORIGINAL DESIGN AS CONTAINED IN THE CONTRACT DOCUMENTS.

REV	DATE	DESIGN	DRAWN	DESCRIPTION
1	2018JAN08	K. ANDERSON	C. HOUSTON	RECORD DRAWINGS
0	2018JUN18	K. ANDERSON	T. DYCHKO	ISSUED FOR TENDER/CONSTRUCTION



RM OF WEST INTERLAKE
 VILLAGE OF ASHERN

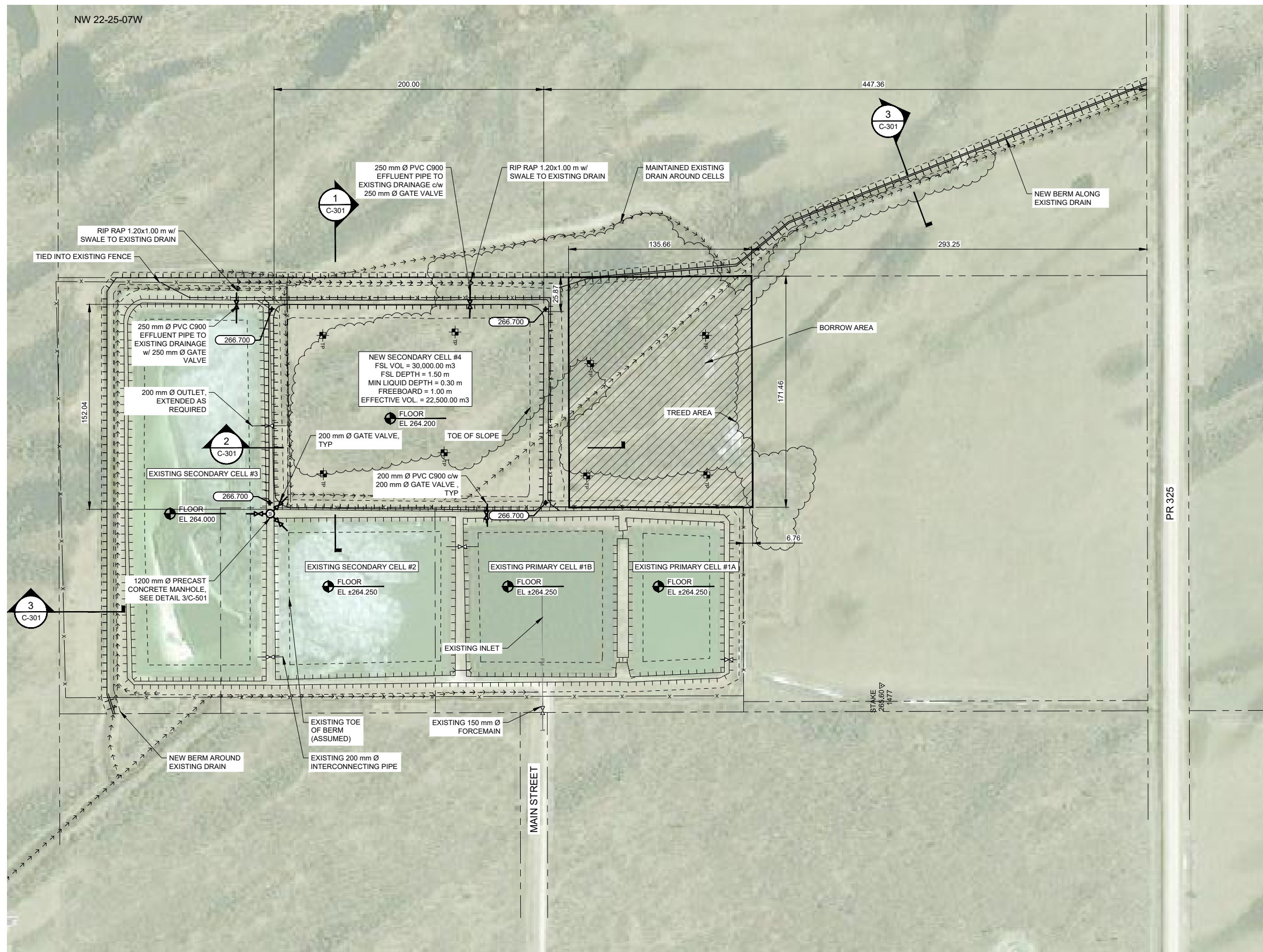
WASTEWATER LAGOON
 EXPANSION

20174981-00

SCALE: AS SHOWN

CIVIL
 OVERALL SITE PLAN

DRAWING	REVISION	SHEET
4981-00-C-101	1	3 / 7



1 PLAN 1:1500

West Interlake
 RURAL MUNICIPALITY

ORIGINAL SEALED BY:
 K. ANDERSON, P. ENG.

DATED: JUNE 14, 2018

THE INFORMATION CONTAINED ON THIS DRAWING, OTHER THAN CHANGES MADE BY ASSOCIATED ENGINEERING (SASK) LTD., ORIGINATED FROM SOURCES OTHER THAN THE DESIGN PROFESSIONAL AND ASSOCIATED ENGINEERING (SASK) LTD. DOES NOT WARRANT OR REPRESENT THAT SUCH INFORMATION IS ACCURATE OR REPRESENTS THE ORIGINAL DESIGN AS CONTAINED IN THE CONTRACT DOCUMENTS.

1	2018JAN08	K. ANDERSON	C. HOUSTON	RECORD DRAWINGS
0	2018JUN18	K. ANDERSON	T. DYCHKO	ISSUED FOR TENDER/CONSTRUCTION
REV	DATE	DESIGN	DRAWN	DESCRIPTION



RM OF WEST INTERLAKE
 VILLAGE OF ASHERN

WASTEWATER LAGOON
 EXPANSION

20174981-00

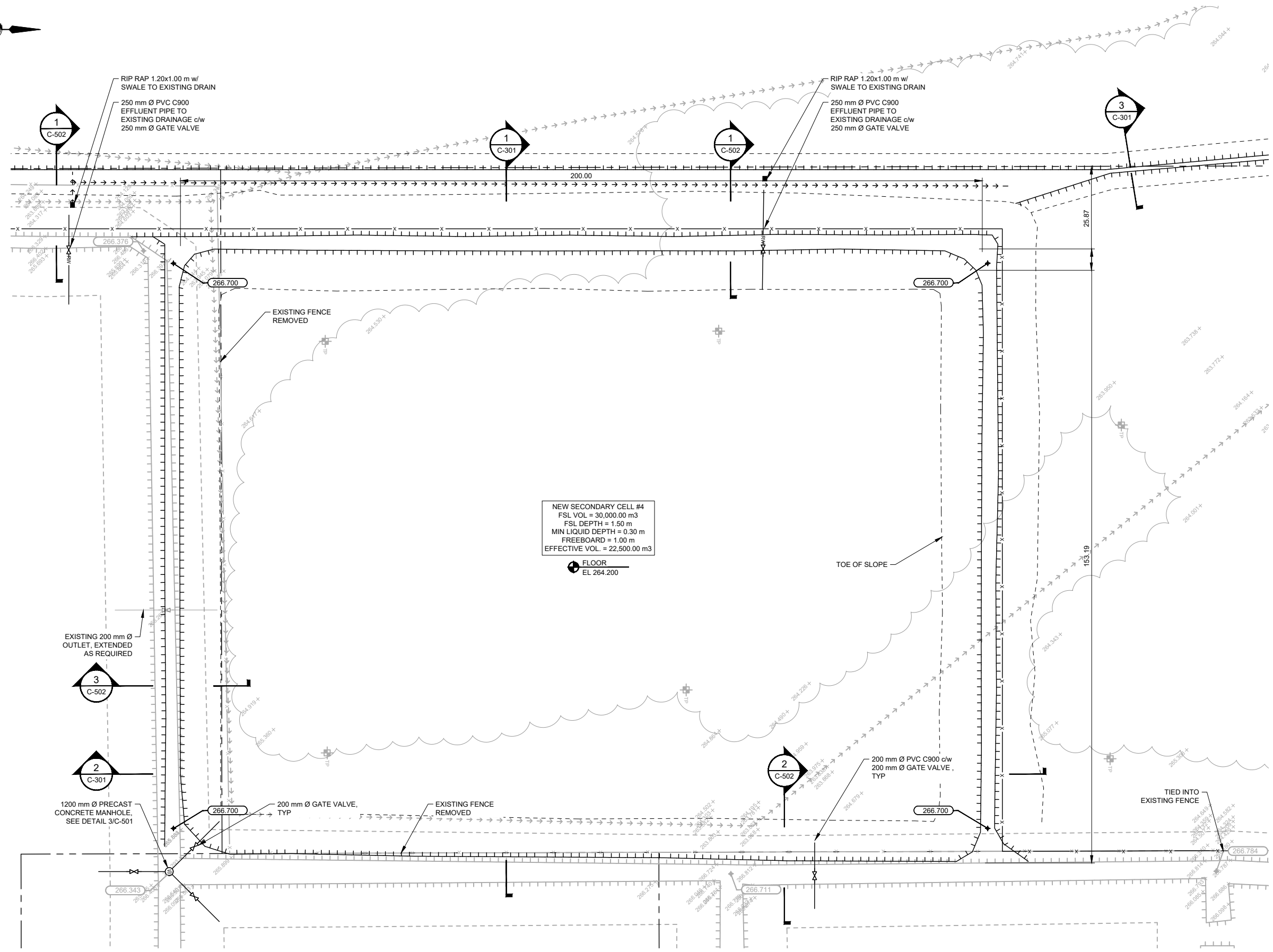
SCALE: AS SHOWN

CIVIL
 SITE PLAN
 NEW CELL #4

DRAWING	REVISION	SHEET
4 4981-00-C-102	1	4 / 7

P:\20174981\00_Ashern_Lagoon\Working_Dwg\100_Civil\4 4981-00-C-102.dwg
 DATE: 2019-01-14, Chris Houston

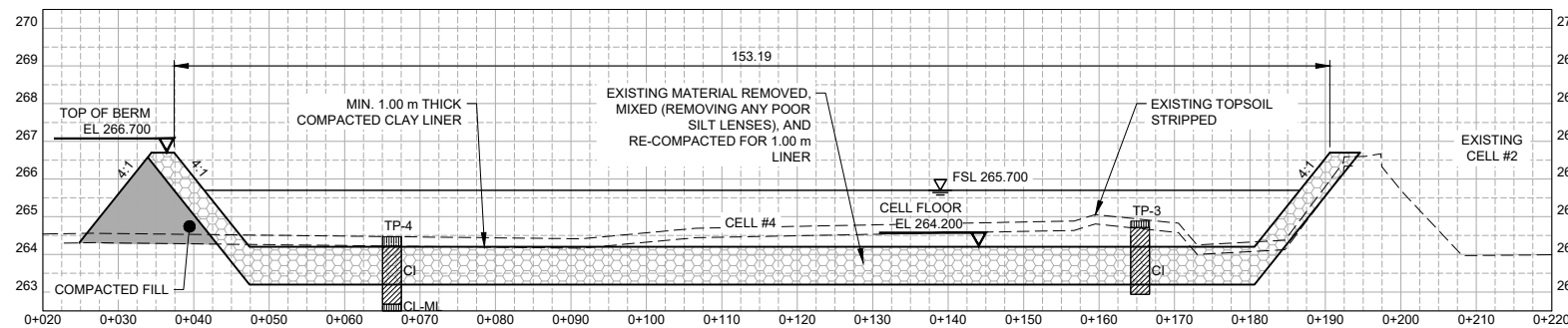
IF NOT 50 mm ADJUST SCALES
 50 mm
 SCALES SHOWN ARE INTENDED FOR ANSI D (220x) SIZE DRAWINGS. TABL010 (11X17) SIZE DRAWINGS ARE 1/2 OF SCALES SHOWN UNLESS NOTED OTHERWISE



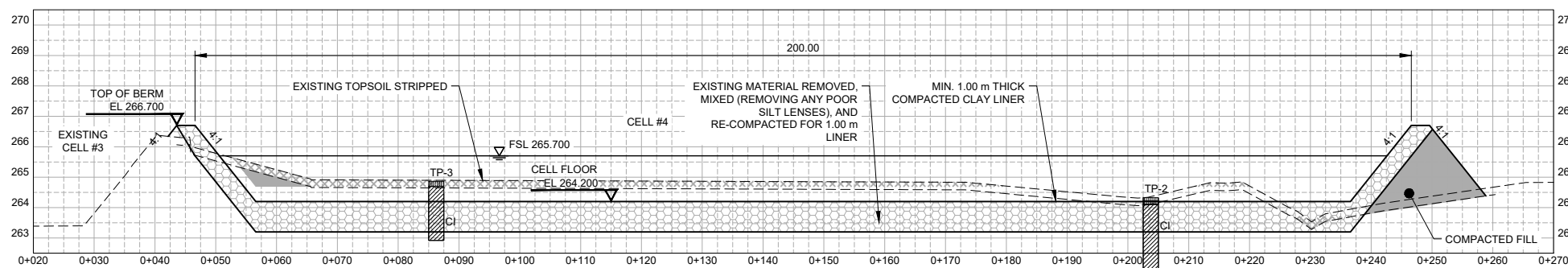
NEW SECONDARY CELL #4
 FSL VOL = 30,000.00 m3
 FSL DEPTH = 1.50 m
 MIN LIQUID DEPTH = 0.30 m
 FREEBOARD = 1.00 m
 EFFECTIVE VOL. = 22,500.00 m3

FLOOR
 EL 264.200

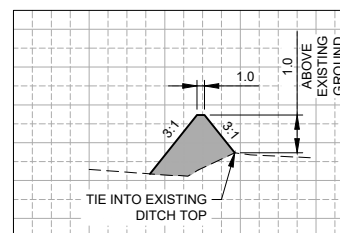
1 PLAN 1:500



1 SECTION H1:500 V1:100
 C-101
 C-102



2 SECTION H1:500 V1:100
 C-101
 C-102



3 SECTION H1:500 V1:100
 C-101
 C-102
 EXISTING DITCH NEW BERM

ORIGINAL SEALED BY:
 K. ANDERSON, P. ENG.

DATED: JUNE 14, 2018

THE INFORMATION CONTAINED ON THIS DRAWING, OTHER THAN CHANGES MADE BY ASSOCIATED ENGINEERING (SASK) LTD., ORIGINATED FROM SOURCES OTHER THAN THE DESIGN PROFESSIONAL AND ASSOCIATED ENGINEERING (SASK) LTD. DOES NOT WARRANT OR REPRESENT THAT SUCH INFORMATION IS ACCURATE OR REPRESENTS THE ORIGINAL DESIGN AS CONTAINED IN THE CONTRACT DOCUMENTS.

REV	DATE	DESIGN	DRAWN	DESCRIPTION
2	2018JAN08	K. ANDERSON	C. HOUSTON	RECORD DRAWINGS
1	2018JULY06	K. ANDERSON	K. ANDERSON	ISSUED FOR TENDER - REVISION
0	2018JUN18	K. ANDERSON	T. DYCHKO	ISSUED FOR TENDER/CONSTRUCTION



RM OF WEST INTERLAKE
 VILLAGE OF ASHERN

WASTEWATER LAGOON
 EXPANSION

20174981-00

SCALE: AS SHOWN

CIVIL
 CELL #4 SECTIONS

DRAWING	REVISION	SHEET
4981-00-C-301	2	5 / 7

IF NOT 50 mm ADJUST SCALES
 SCALES SHOWN ARE INTENDED FOR ANSI D (22x34) SIZE DRAWINGS. TABLOID (11x17) SIZE DRAWINGS ARE 1/2 OF SCALES SHOWN UNLESS NOTED OTHERWISE

West Interlake
RURAL MUNICIPALITY

ORIGINAL SEALED BY:
K. ANDERSON, P. ENG.
DATED: JUNE 14, 2018

THE INFORMATION CONTAINED ON THIS DRAWING, OTHER THAN CHANGES MADE BY ASSOCIATED ENGINEERING (SASK) LTD., ORIGINATED FROM SOURCES OTHER THAN THE DESIGN PROFESSIONAL AND ASSOCIATED ENGINEERING (SASK) LTD. DOES NOT WARRANT OR REPRESENT THAT SUCH INFORMATION IS ACCURATE OR REPRESENTS THE ORIGINAL DESIGN AS CONTAINED IN THE CONTRACT DOCUMENTS.

REV	DATE	DESIGN	DRAWN	DESCRIPTION
1	2018JAN08	K. ANDERSON	C. HOUSTON	RECORD DRAWINGS
0	2018JUN18	K. ANDERSON	T. DYCHKO	ISSUED FOR TENDER/CONSTRUCTION



RM OF WEST INTERLAKE
VILLAGE OF ASHERN

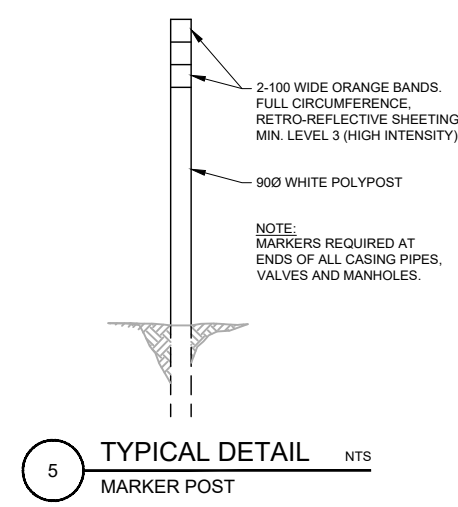
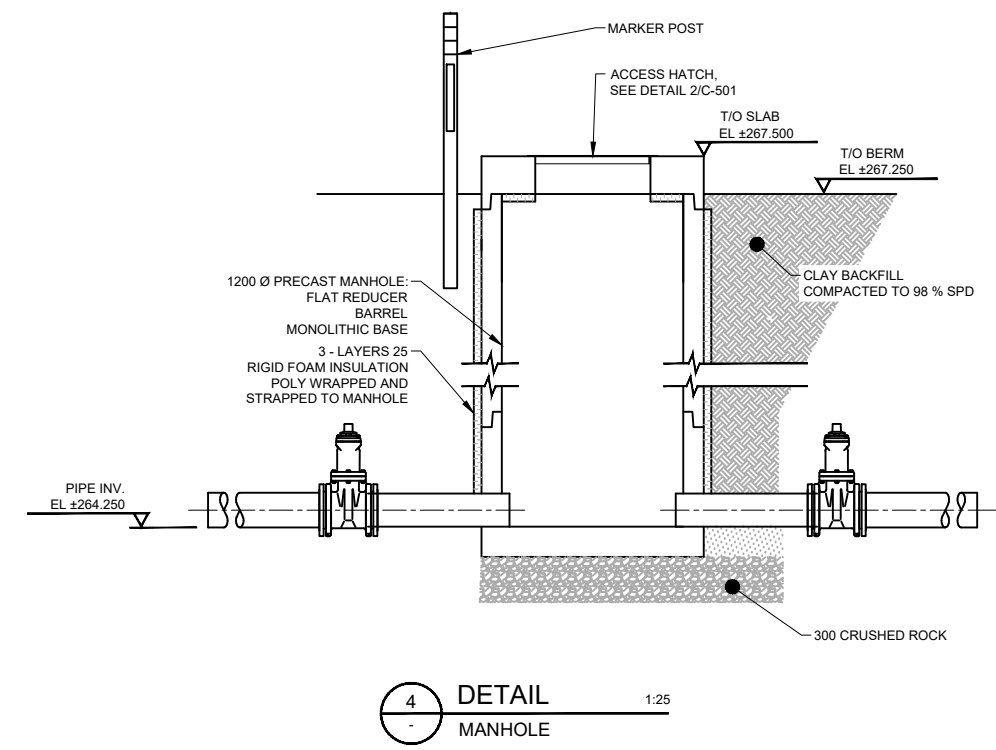
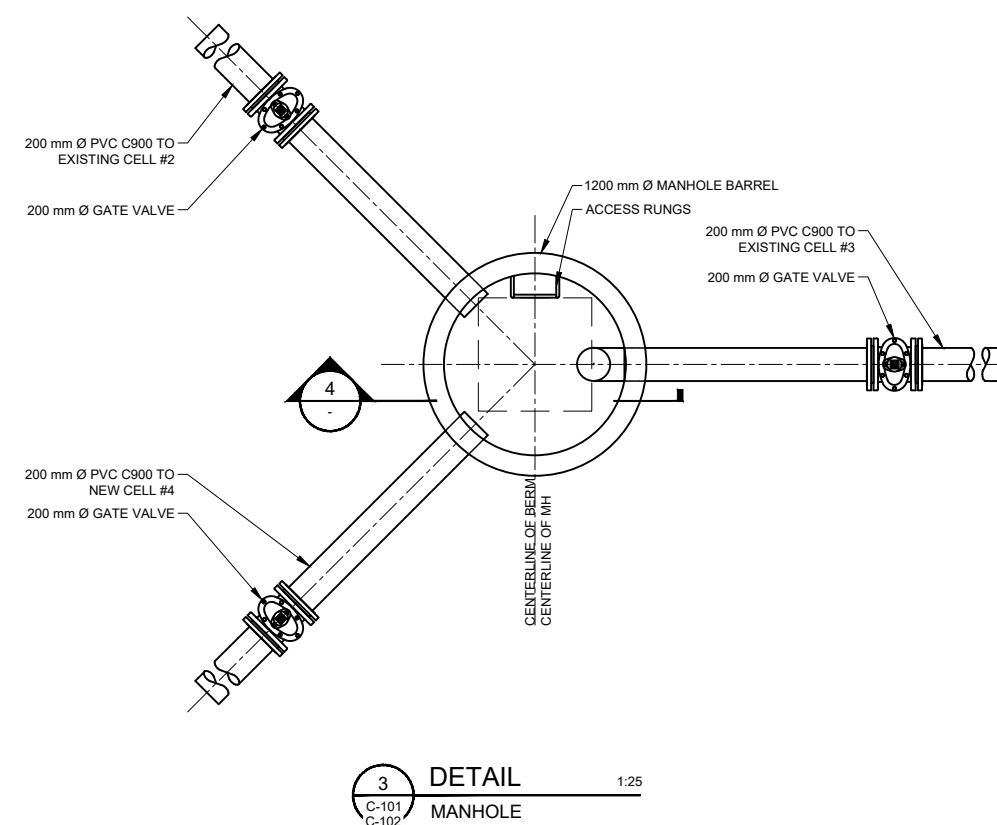
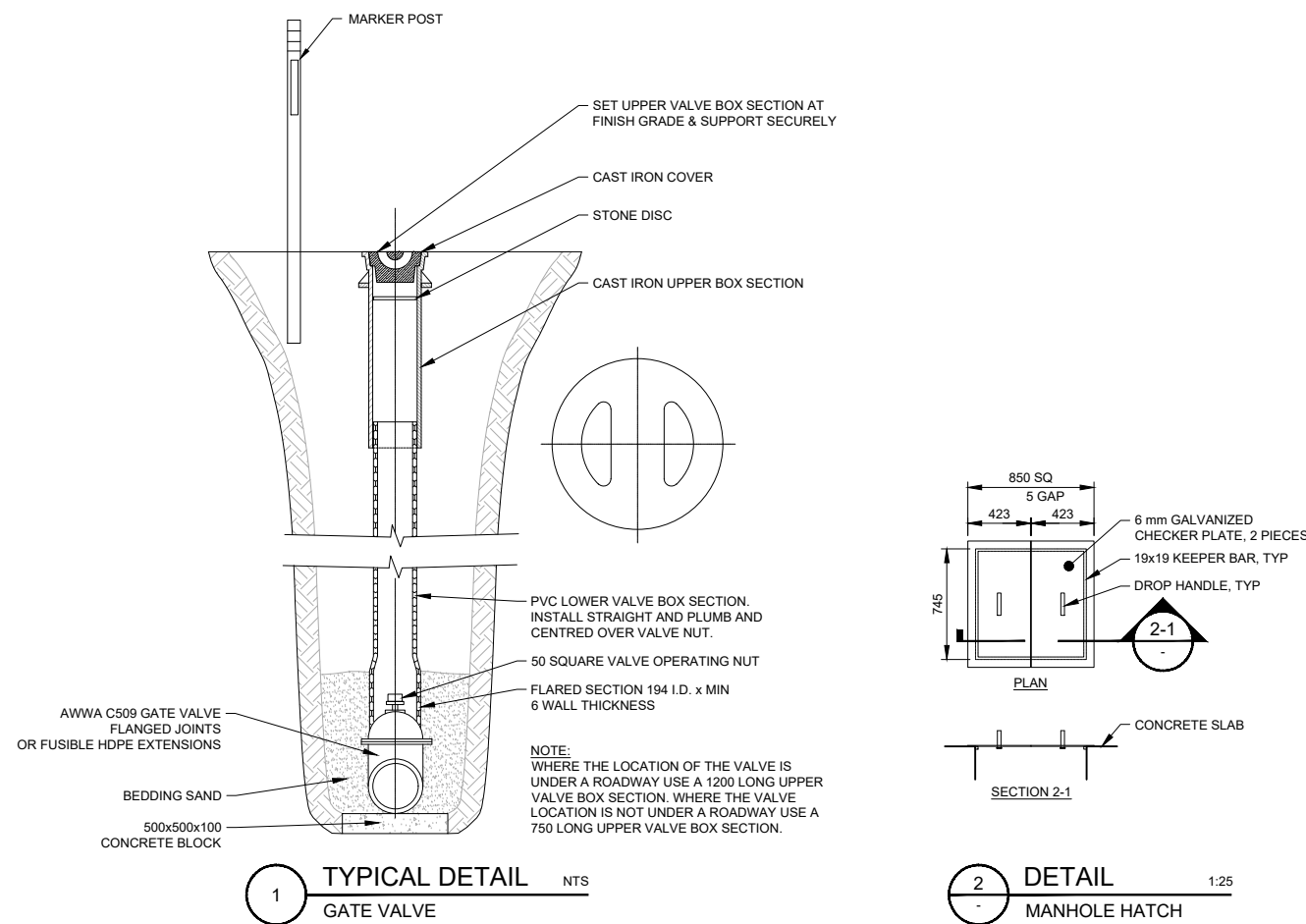
WASTEWATER LAGOON
EXPANSION

20174981-00

SCALE: AS SHOWN

CIVIL
TYPICAL DETAILS

DRAWING	REVISION	SHEET
4981-00-C-501	1	6 / 7



ORIGINAL SEALED BY:
K. ANDERSON, P. ENG.

DATED: JUNE 14, 2018

THE INFORMATION CONTAINED ON THIS DRAWING, OTHER THAN CHANGES MADE BY ASSOCIATED ENGINEERING (SASK) LTD., ORIGINATED FROM SOURCES OTHER THAN THE DESIGN PROFESSIONAL AND ASSOCIATED ENGINEERING (SASK) LTD. DOES NOT WARRANT OR REPRESENT THAT SUCH INFORMATION IS ACCURATE OR REPRESENTS THE ORIGINAL DESIGN AS CONTAINED IN THE CONTRACT DOCUMENTS.

REV	DATE	DESIGN	DRAWN	DESCRIPTION
1	2018JAN08	K. ANDERSON	C. HOUSTON	RECORD DRAWINGS
0	2018JUN18	K. ANDERSON	T. DYCHKO	ISSUED FOR TENDER/CONSTRUCTION



RM OF WEST INTERLAKE
VILLAGE OF ASHERN

WASTEWATER LAGOON
EXPANSION

20174981-00

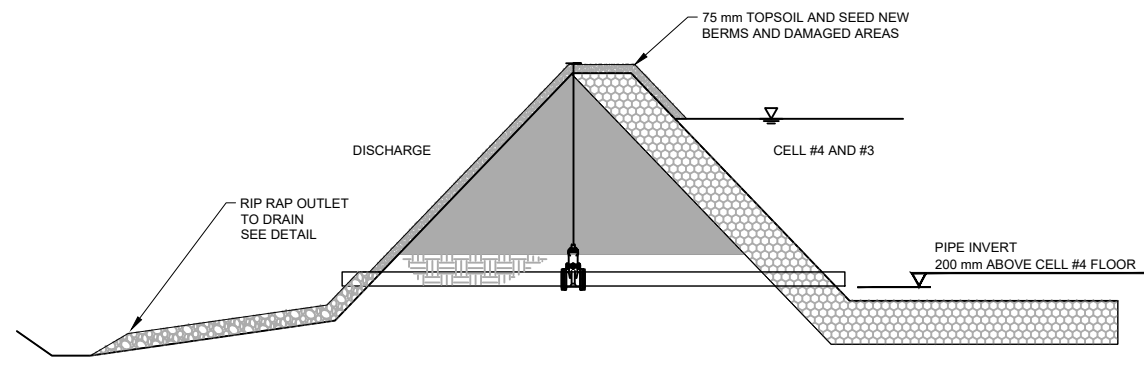
SCALE: AS SHOWN

CIVIL
PROFILE DETAILS

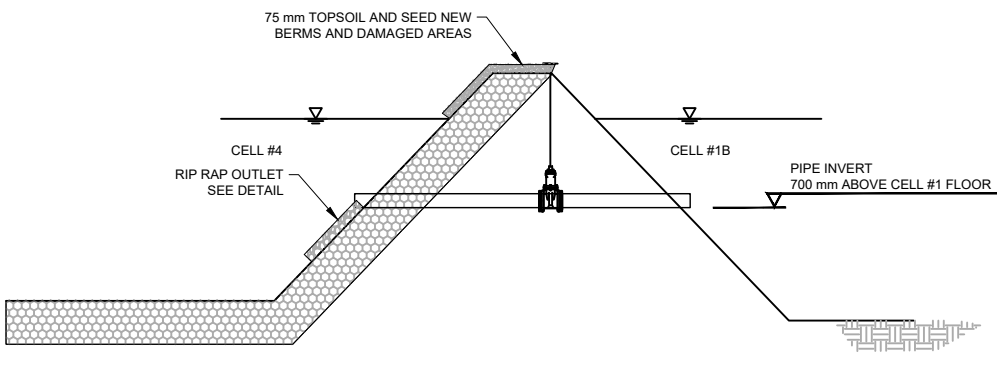
DRAWING	REVISION	SHEET
4981-00-C-502	1	7 / 7

F NOT 50 mm ADJUST SCALES

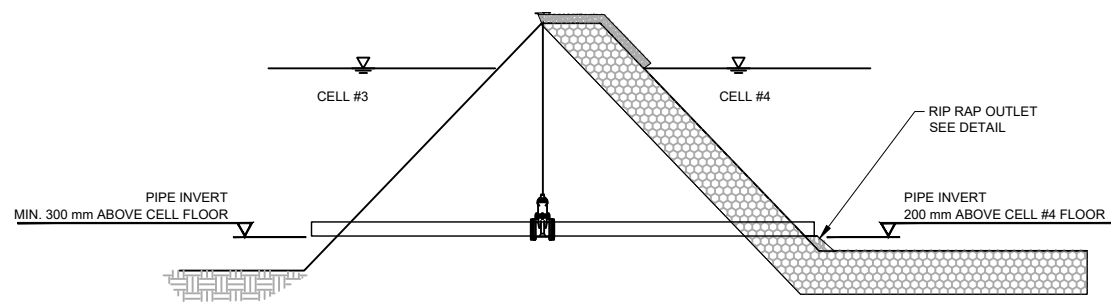
SCALES SHOWN ARE INTENDED FOR ANSI D (222X4) SIZE DRAWINGS. TABLOID (11X17) SIZE DRAWINGS ARE 1/2 OF SCALES SHOWN UNLESS NOTED OTHERWISE



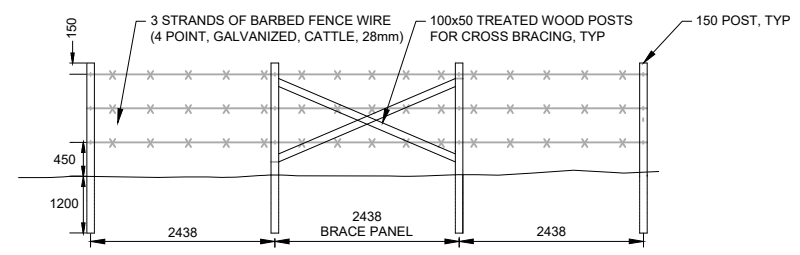
1 PROFILE 1:25
C-102 EFFLUENT PIPING



2 PROFILE 1:25
C-102 INTERCELL PIPING

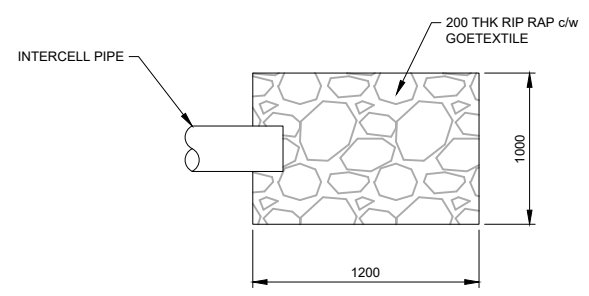


3 PROFILE 1:25
C-102 INTERCELL PIPING



- NOTES:
1. MINIMUM DISTANCE FOR BRACE PANELS IS 400 m ON TANGENTS AND 200 m ALONG CURVES.
 2. PROVIDE BRACE PANELS AT CORNER POSTS IN BOTH DIRECTIONS.
 3. ALL DIMENSIONAL LUMBER SIZES SHOWN ARE NOMINAL.
 4. ALL DIMENSIONS SHOWN IN MILLIMETERS UNLESS NOTED OTHERWISE.

4 TYPICAL DETAIL 1:50
FENCE AND BRACE PANEL



5 TYPICAL DETAIL 1:50
RIP RAP OUTLET