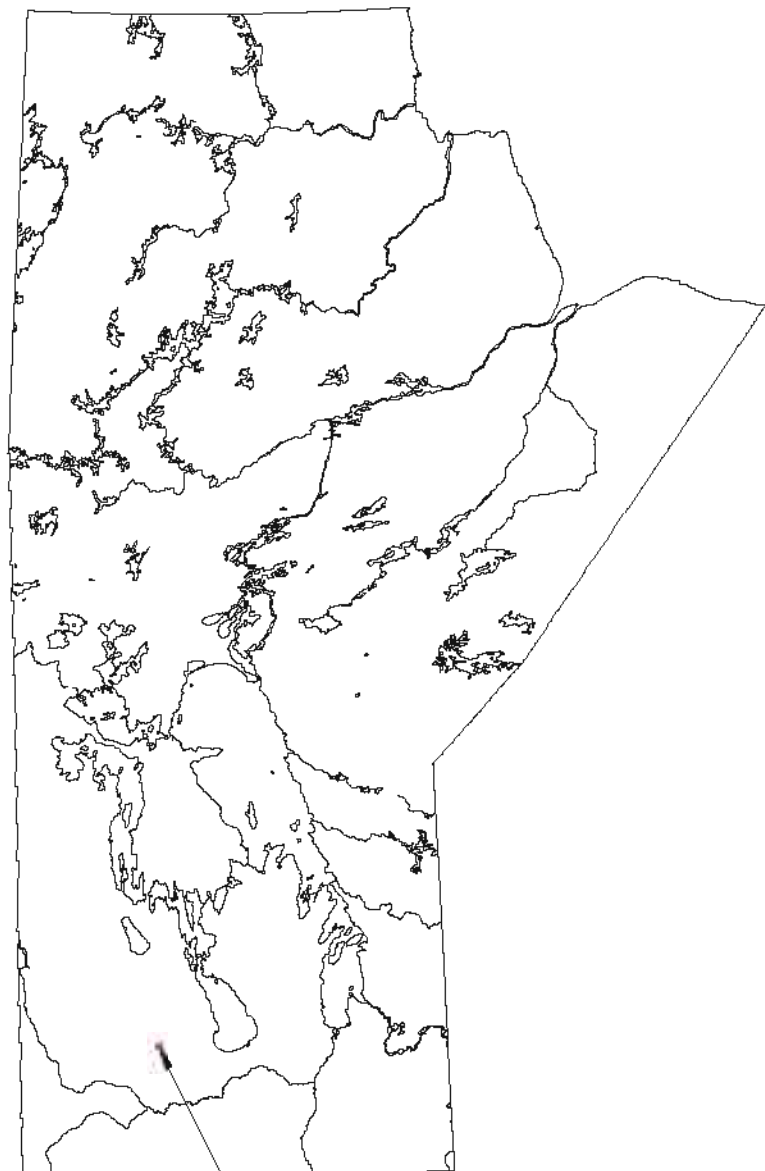
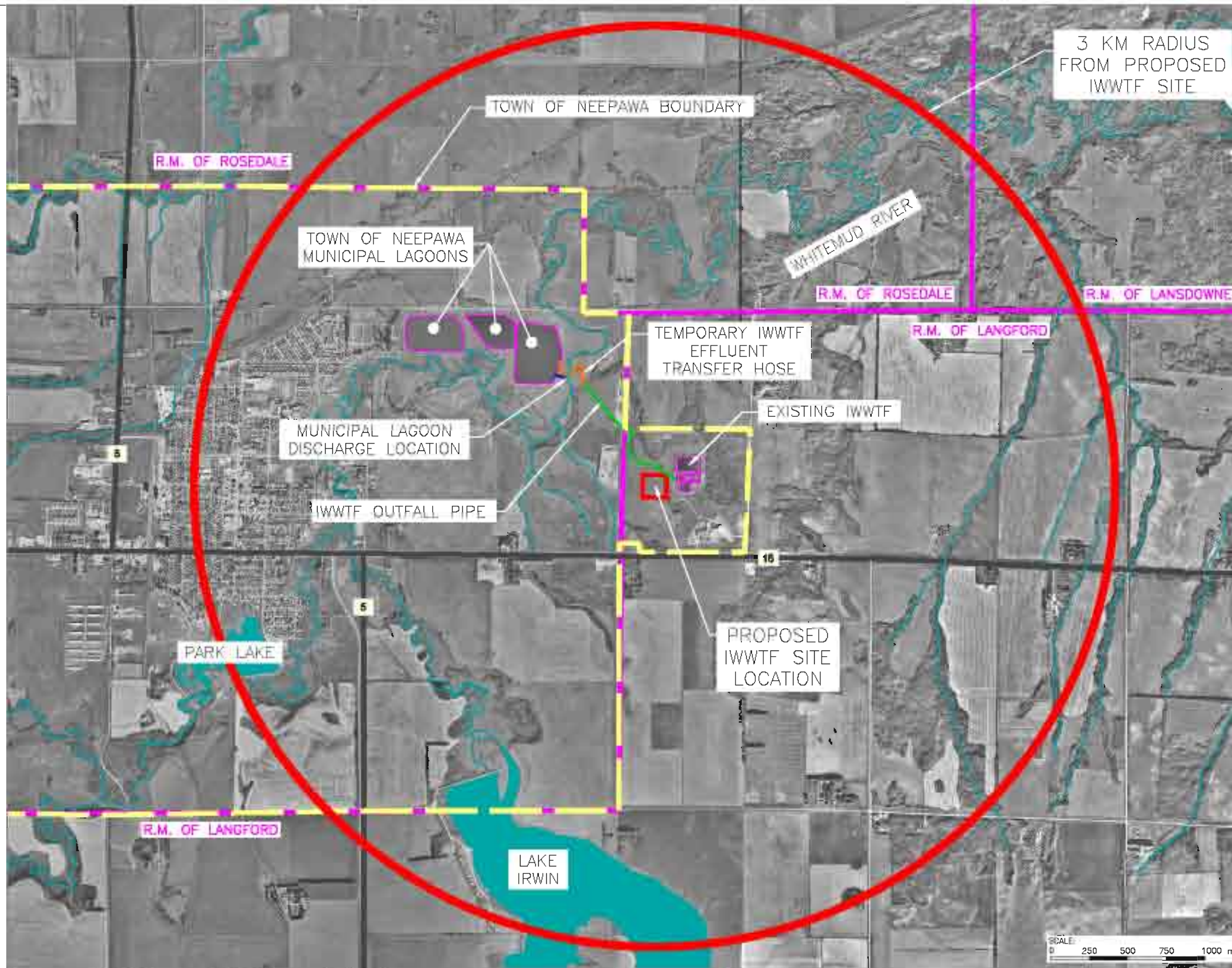




Figures



PROPOSED IWWTF SITE LOCATION



Source: Manitoba Land Initiative, Digital Imagery: 4605560neg, 4605560seg, 4705560nwg, 4705560swg.

EarthTech
 Earth Tech (Canada) Inc. Winnipeg, Manitoba 204.477.5381
 IWWTF UPGRADE
 ENVIRONMENTAL IMPACT ASSESSMENT
 NEEPAWA, MANITOBA

Neepawa
Land of Plenty
 3 KM RADIUS MAP
 INDUSTRIAL WASTEWATER TREATMENT FACILITY
 NEEPAWA, MANITOBA

designed	scale	yy-mm-dd
drawn	BAR	08-06-13
AZ	project no.	97297
checked	drawing no.	rev.
SJB	FIGURE 1.1	
approved		



TOWN OF NEEPAWA LEGEND:

- *RS-U* RESIDENTIAL SINGLE - FAMILY UNSERVICED ZONE
- *RS* RESIDENTIAL SINGLE - FAMILY ZONE
- *RT* RESIDENTIAL TWO - FAMILY ZONE
- *RM-1* RESIDENTIAL MULTIPLE - FAMILY ZONE
- *RM-2* RESIDENTIAL MULTIPLE - FAMILY ZONE
- *RR2* RESIDENTIAL RURAL ZONE
- *CC* COMMERCIAL CENTRAL ZONE
- *CH* COMMERCIAL HIGHWAY ZONE
- *IL* INDUSTRIAL LIGHT ZONE
- *MH* INDUSTRIAL HEAVY ZONE
- *I* INSTITUTIONAL ZONE
- *AR* AGRICULTURAL RESTRICTED ZONE
- *AR-R* AGRICULTURAL RESTRICTED - RESIDENTIAL ZONE
- *AR-C* AGRICULTURAL RESTRICTED - COMMERCIAL ZONE
- *AR-O* AGRICULTURAL RESTRICTED - OPEN SPACE ZONE
- *O* OPEN SPACE ZONE

R.M. OF LANGFORD LEGEND:

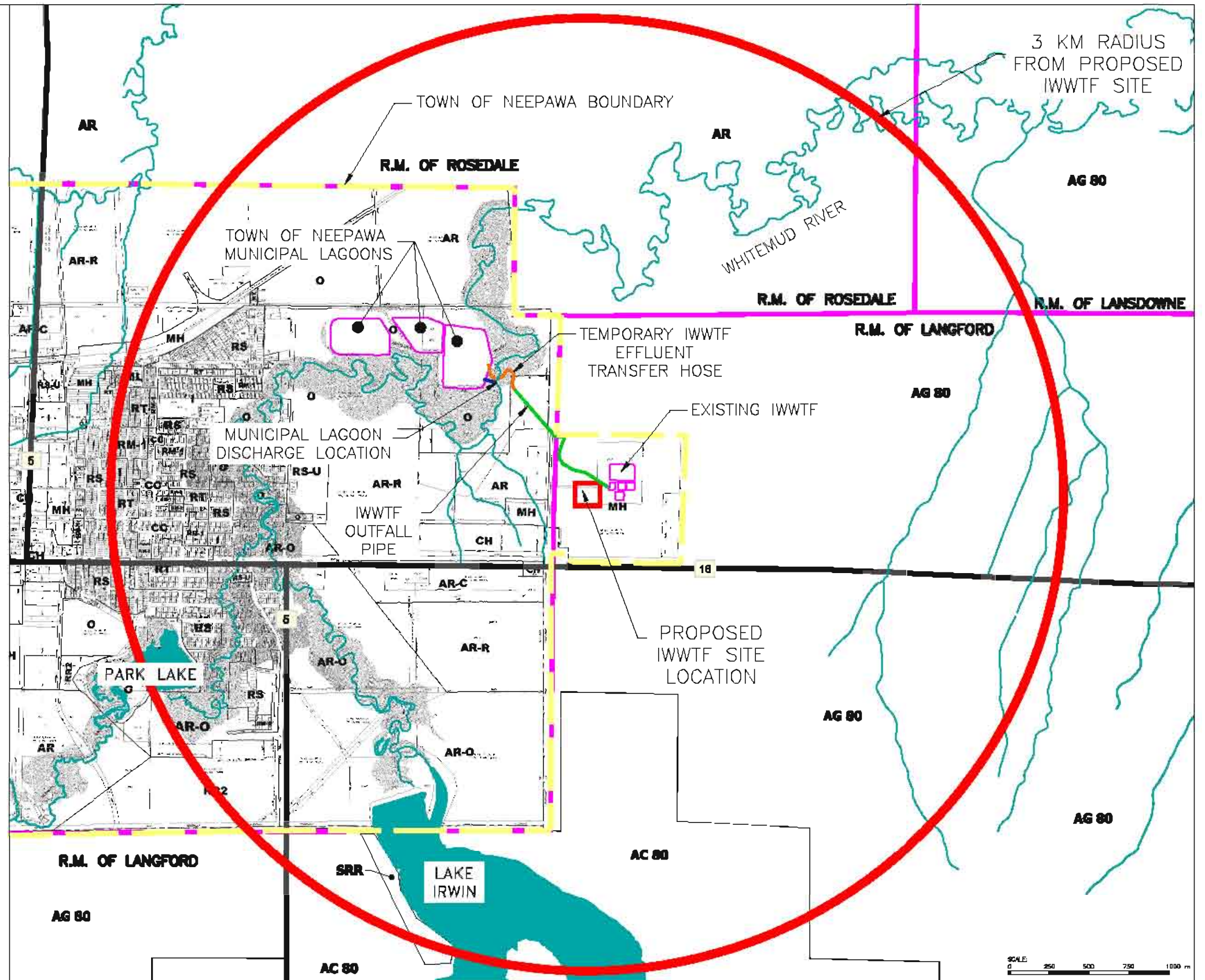
- *AG 80* - AGRICULTURAL GENERAL ZONE
- *AC 80* - AGRICULTURAL CONSERVATION ZONE (Limits of the Designated Reservoir Area)
- *SRR* - SEASONAL RECREATION RESIDENTIAL ZONE

R.M. OF ROSEDALE LEGEND:

- *AR* - AGRICULTURAL RESTRICTED ZONE

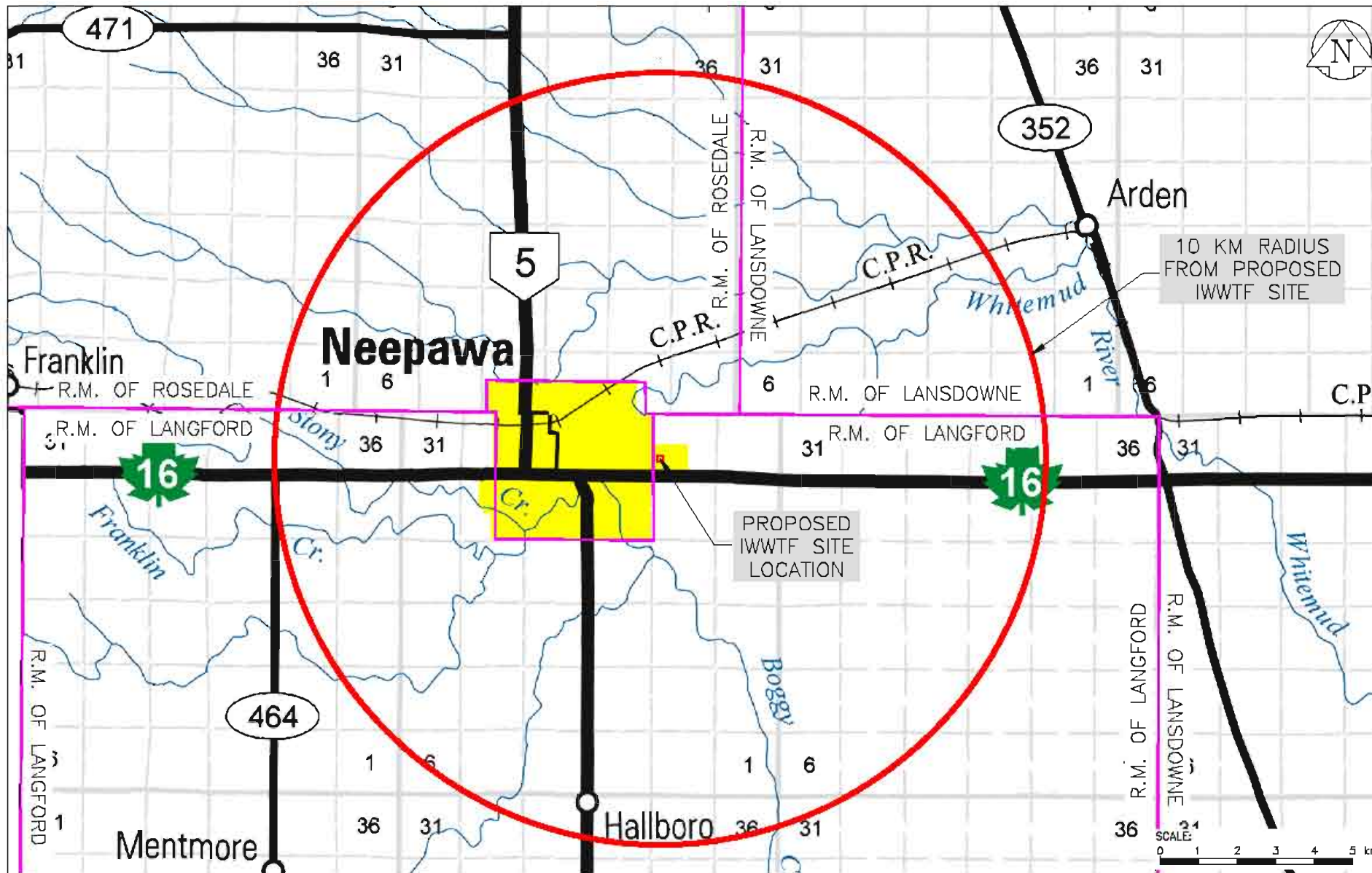
R.M. OF LANSDOWNE LEGEND:

- *AG 80* - AGRICULTURAL GENERAL ZONE



Source: Manitoba Intergovernmental Affairs, Community Planning Services – Town of Neepawa Zoning Maps One and Two (By-law No. 2650) 2007, Rural Municipality of Langford Appendix "A" (Zoning Maps One, Three and Four of By-law No. 856) 2004, Rural Municipality of Rosedale Appendix "A" (Zoning Map One of By-law No. 5-88) 2007, Rural Municipality of Lansdowne.

 Earth Tech (Canada) Inc. Winnipeg, Manitoba 204.479.5361	 Land of Plenty	designed	scale	yy-mm-dd
		drawn	BAR	08-06-13
IWWTF UPGRADE ENVIRONMENTAL IMPACT ASSESSMENT NEEPAWA, MANITOBA		checked	project no.	
		SJB	97297	
ZONING MAP INDUSTRIAL WASTEWATER TREATMENT FACILITY NEEPAWA, MANITOBA		approved	drawing no.	rev.
			FIGURE 2.1	



Source: Manitoba Land Initiative, Base Maps: 1:2,000,000; Manitoba Land Initiative, Municipal Maps – Langford No. 46, Lansdowne No. 47, Rosedale No. 77, 2008.



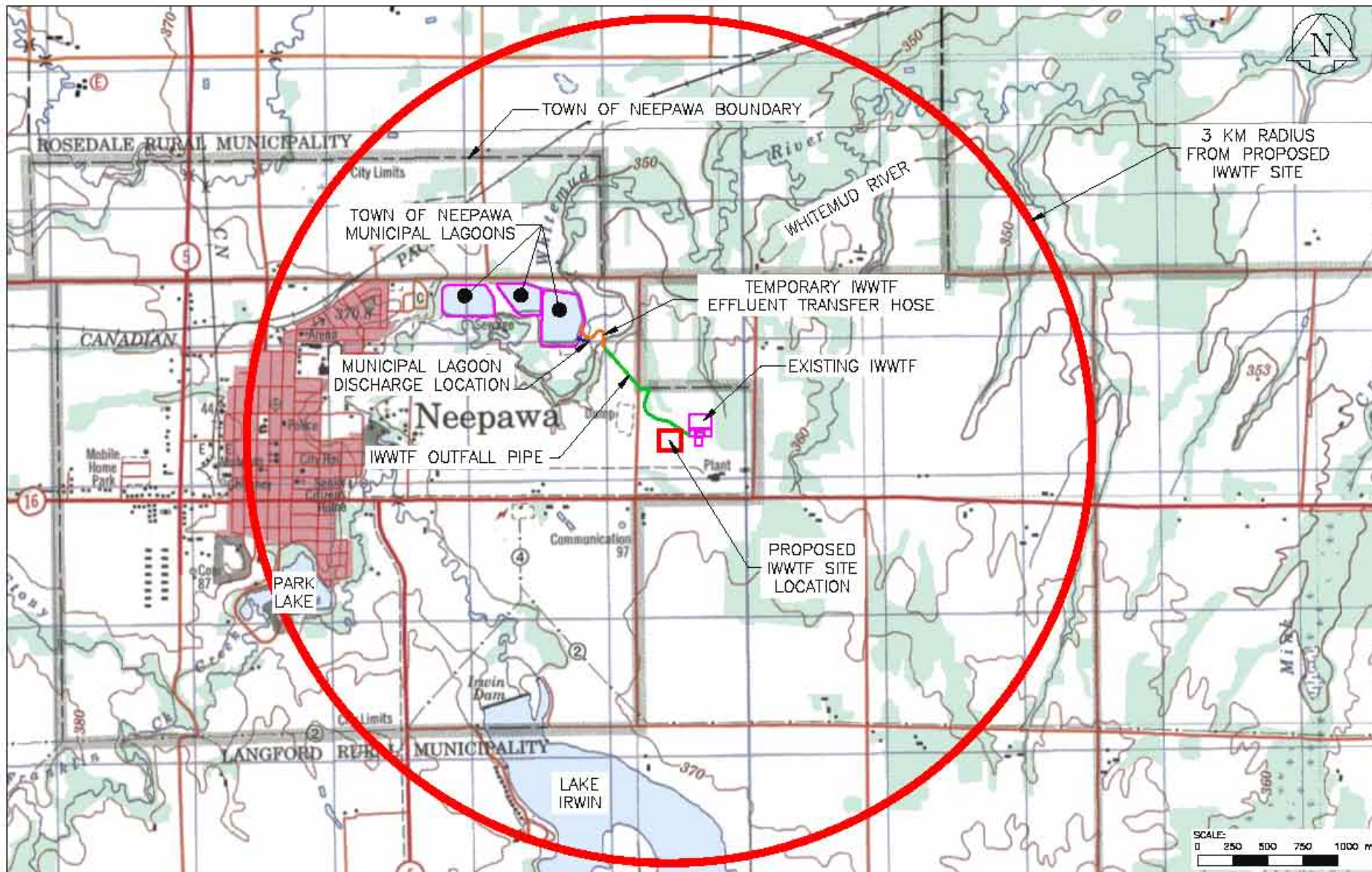
Earth Tech (Canada) Inc. Winnipeg, Manitoba 204-477-6681

IWWTF UPGRADE
ENVIRONMENTAL IMPACT ASSESSMENT
NEEPAWA, MANITOBA



10 KM RADIUS MAP
INDUSTRIAL WASTEWATER TREATMENT FACILITY
NEEPAWA, MANITOBA

designed	scale	yy-mm-dd
drawn	BAR	08-06-13
checked	project no.	
approved	97297	
	drawing no.	rev.
	FIGURE 2.2	



Source: ETopo, 62J03 – Neepawa Manitoba, 3rd ed., 1997; 62J06 – Arden, Manitoba, 3rd ed., 2001.



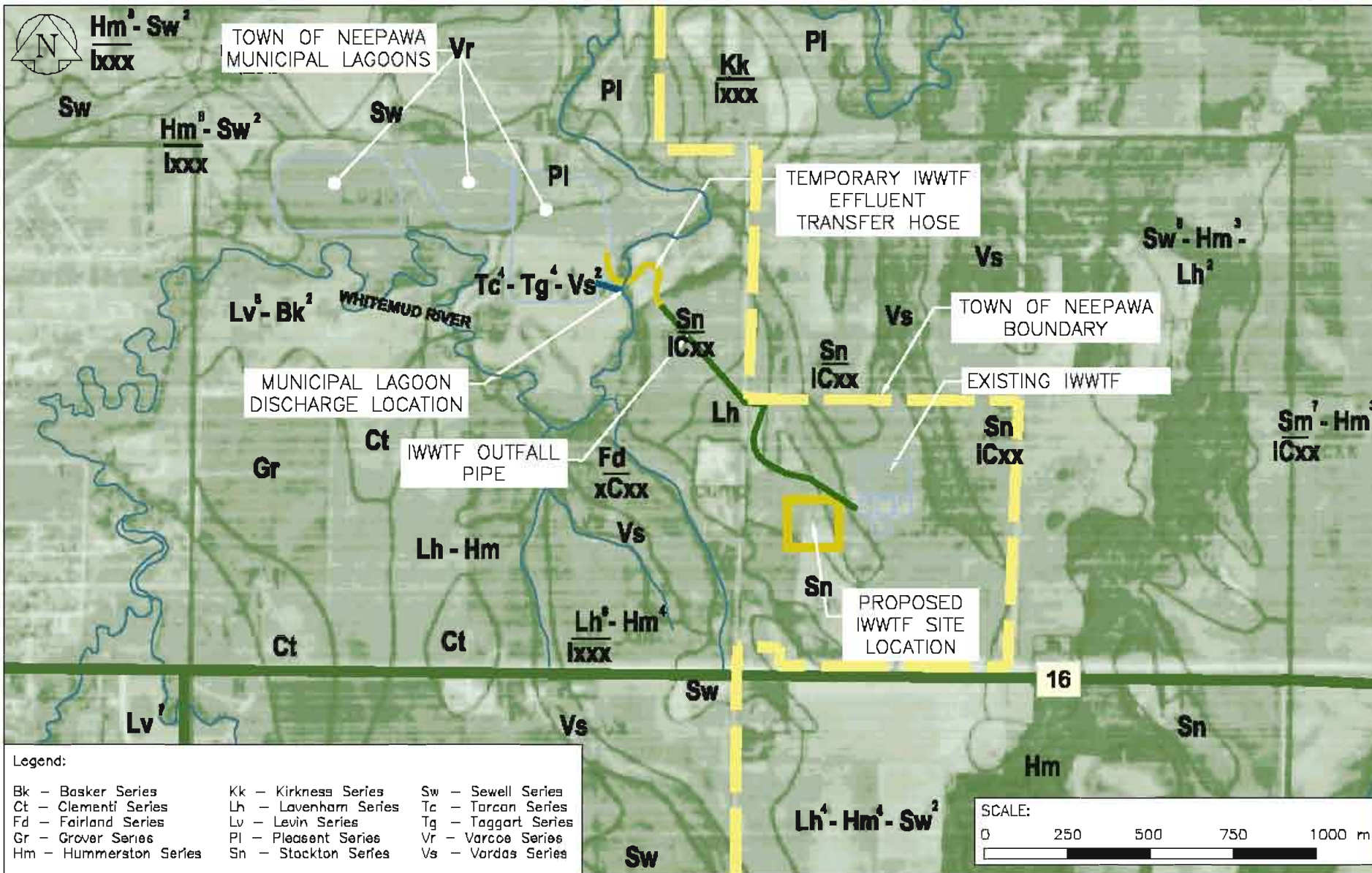
Earth Tech (Canada) Inc. Winnipeg, Manitoba 204.477.8881

IWWTF UPGRADE
ENVIRONMENTAL IMPACT ASSESSMENT
NEEPAWA, MANITOBA



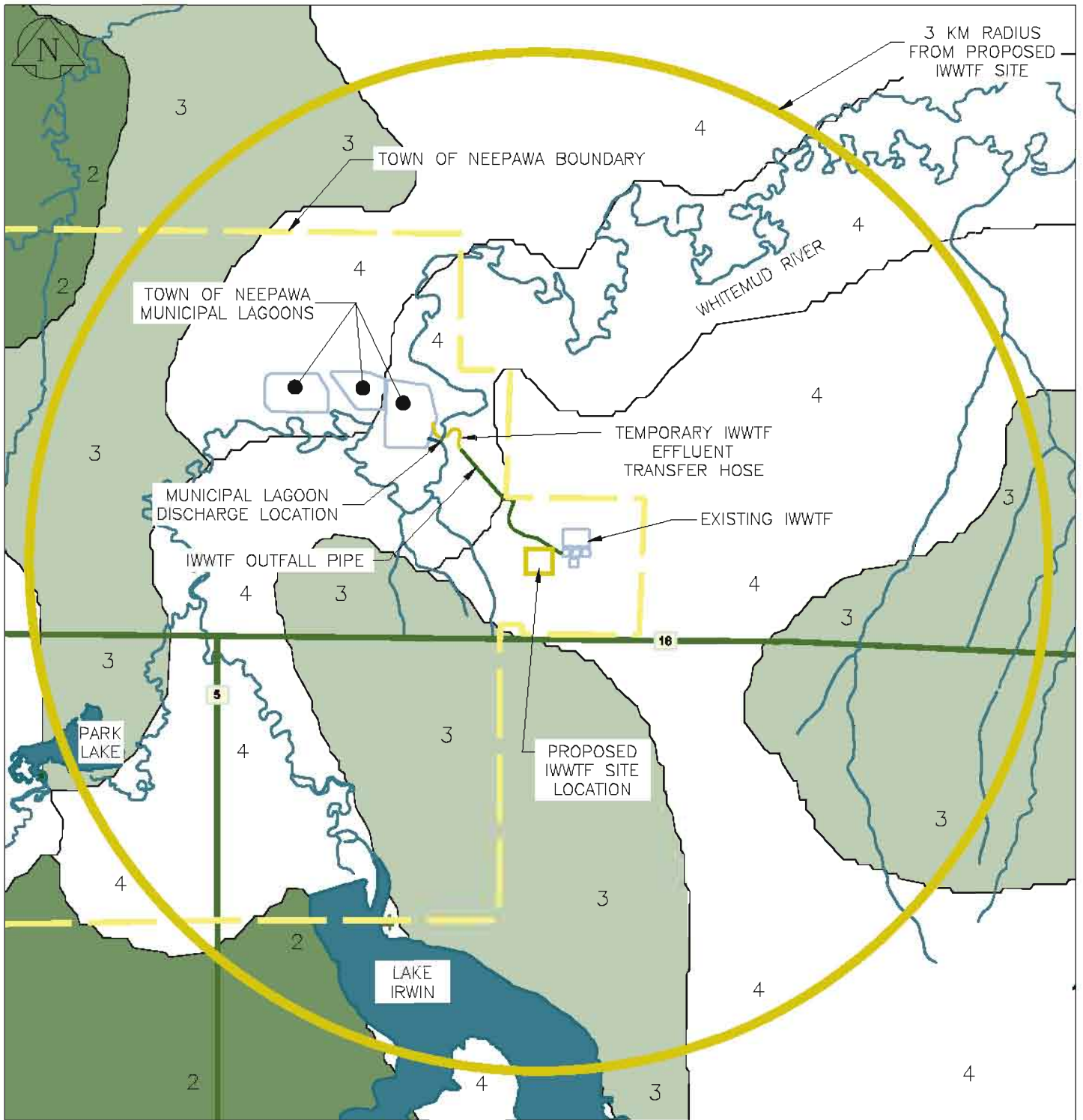
TOPOGRAPHIC MAP
INDUSTRIAL WASTEWATER TREATMENT FACILITY
NEEPAWA, MANITOBA

designed	BAR	yy-mm-dd	08-06-13
drawn	AZ	project no.	97297
checked	SJB	drawing no.	FIGURE 2.3
approved		rev.	



Source: Michalyra et al., Soils of the Brandon Region Study Area, 1976.

 Earth Tech (Canada) Inc. Winnipeg, Manitoba 804.477.6681		designed	scale	yy-mm-dd
		drawn AZ	BAR	08-06-13
IWWTF UPGRADE ENVIRONMENTAL IMPACT ASSESSMENT NEEPAWA, MANITOBA	DETAILED LEVEL SOIL SURVEY INDUSTRIAL WASTEWATER TREATMENT FACILITY NEEPAWA, MANITOBA	checked SJB	project no.	
		approved	97297	
		checked SJB	drawing no.	rev
		approved	FIGURE 2.4	



Class Description:

- 2 – Soils in this class have moderate limitations that restrict the range of crops or require moderate conservation practices.
- 3 – Soils in this class have moderately severe limitations that restrict the range of crops or require special conservation practices.
- 4 – Soils in this class have severe limitations that restrict the range of crops or require special conservation practices.



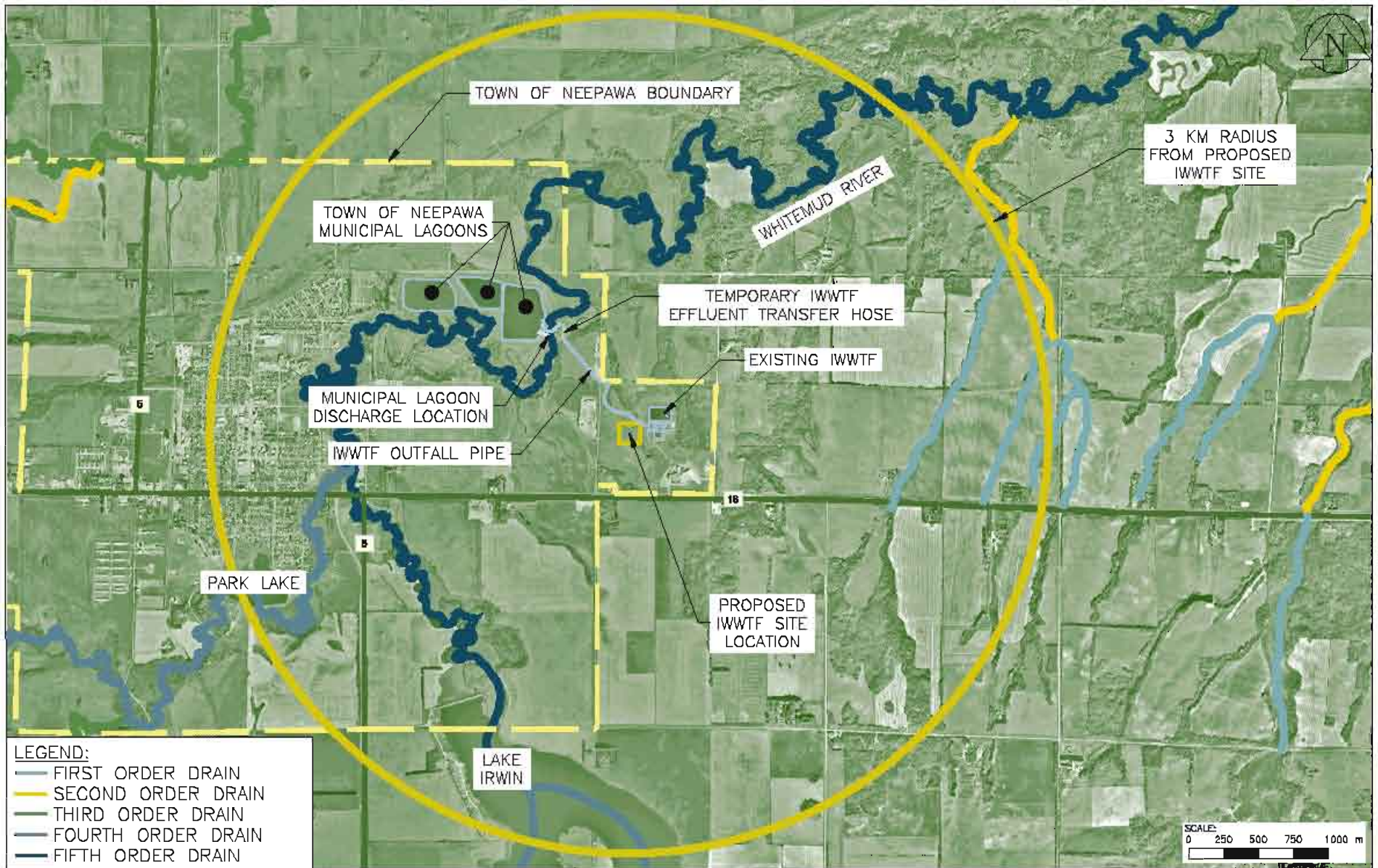
Source: Canada Land Inventory, Soil Capability for Agriculture – 62j, 2008.



Earth Tech (Canada) Inc. Winnipeg, Manitoba 204.497.5500

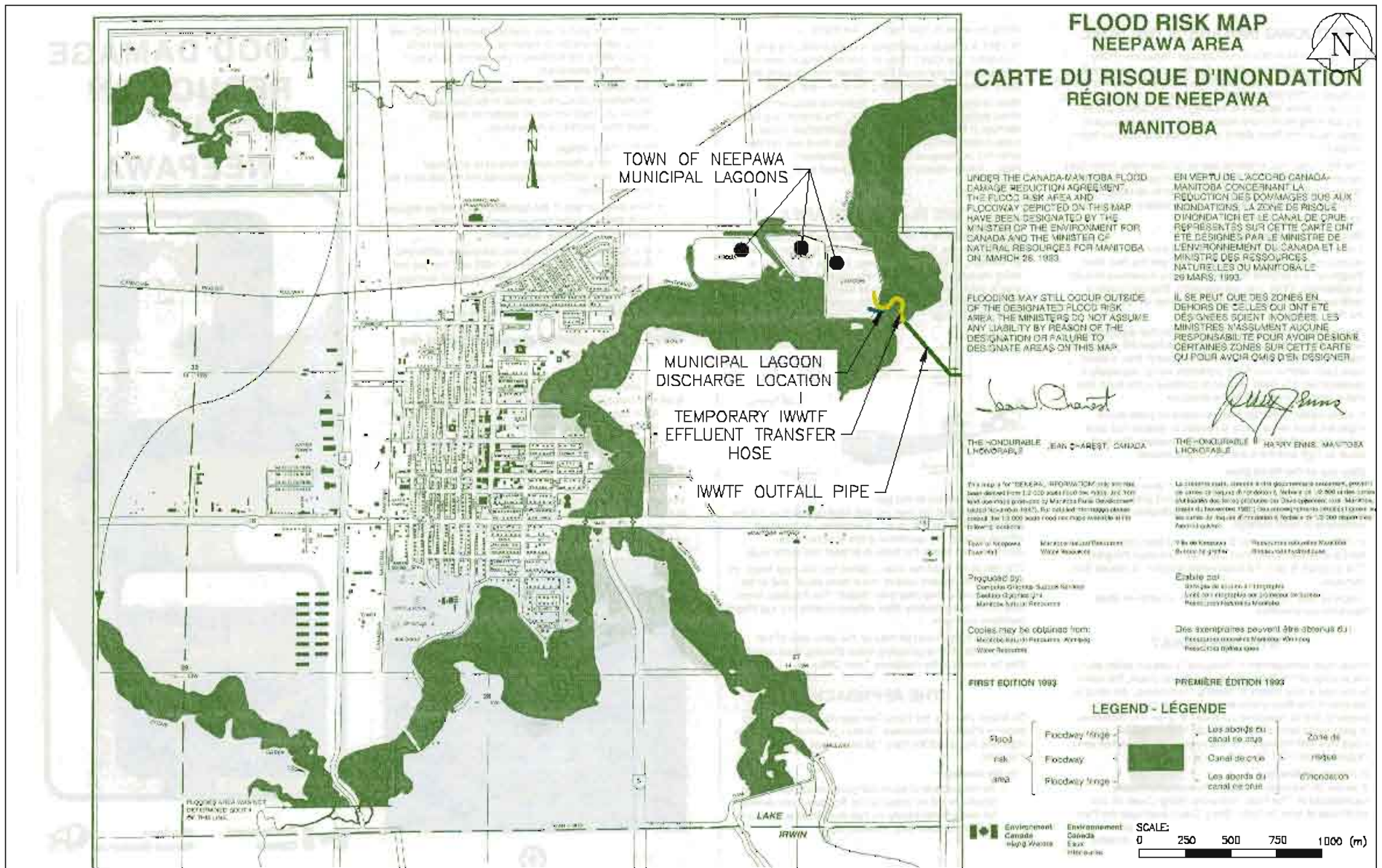
**SOIL CAPABILITY FOR AGRICULTURE
INDUSTRIAL WASTEWATER TREATMENT FACILITY
NEEPAWA, MANITOBA**

designed	scale	yy-mm-dd
drawn	project no.	
checked	drawing no.	rev.
approved	FIGURE 2.5	



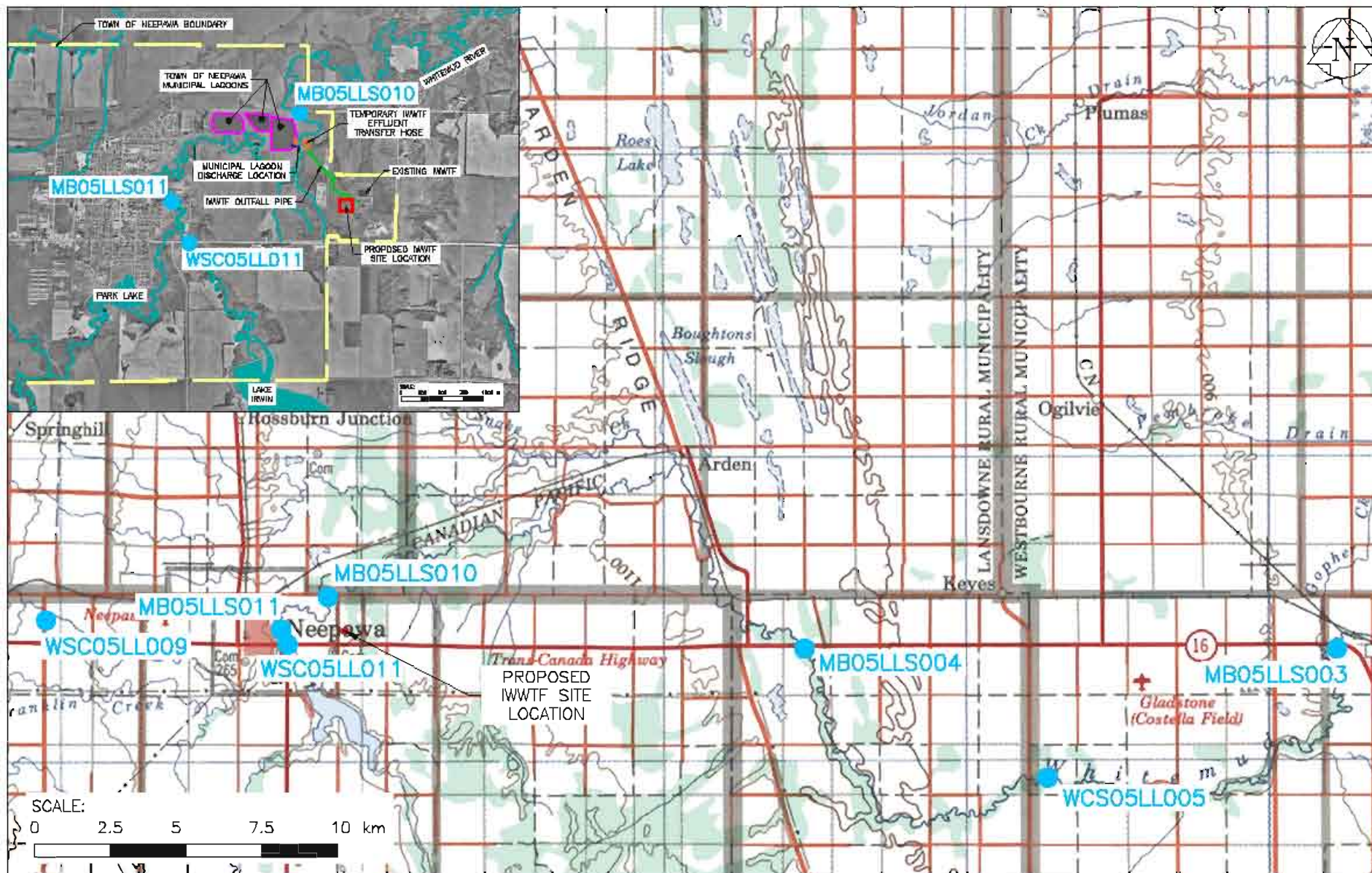
Source: Manitoba Land Initiative, Digital Imagery: 4605560neg, 4605560seg, 4705560nwg, 4705560swg.

 Earth Tech (Canada) Inc. Winnipeg, Manitoba 804.477.6661			designed BAR	scale 08-06-13
	ENVIRONMENTAL IMPACT ASSESSMENT NEEPAWA, MANITOBA		drawn AZ	project no. 97297
IWWTf UPGRADE ENVIRONMENTAL IMPACT ASSESSMENT NEEPAWA, MANITOBA		DRAIN ORDER INDUSTRIAL WASTEWATER TREATMENT FACILITY NEEPAWA, MANITOBA	checked SJB	drawing no. FIGURE 2.6
			approved	rev



Source: Environment Canada, Inland Waters Directorate, Flood Risk Map – Neepawa Area.

<p>Earth Tech Earth Tech (Canada) Inc. Winnipeg, Manitoba 804.477.6361</p>	<p>Neepawa Land of Plenty</p>	designed	BAR	yy-mm-dd	08-06-13
		drawn	AZ	project no.	97297
checked	SJB	approved		drawing no.	FIGURE 2.7
<p>IWWTF UPGRADE ENVIRONMENTAL IMPACT ASSESSMENT NEEPAWA, MANITOBA</p>		<p>FLOOD RISK MAP INDUSTRIAL WASTEWATER TREATMENT FACILITY NEEPAWA, MANITOBA</p>			



Source: Etopo, E70113 – Southern Manitoba; Manitoba Land Initiative, Digital Imagery: 4605560neg, 4605560seg, 4705560nwg, 4705560swg.



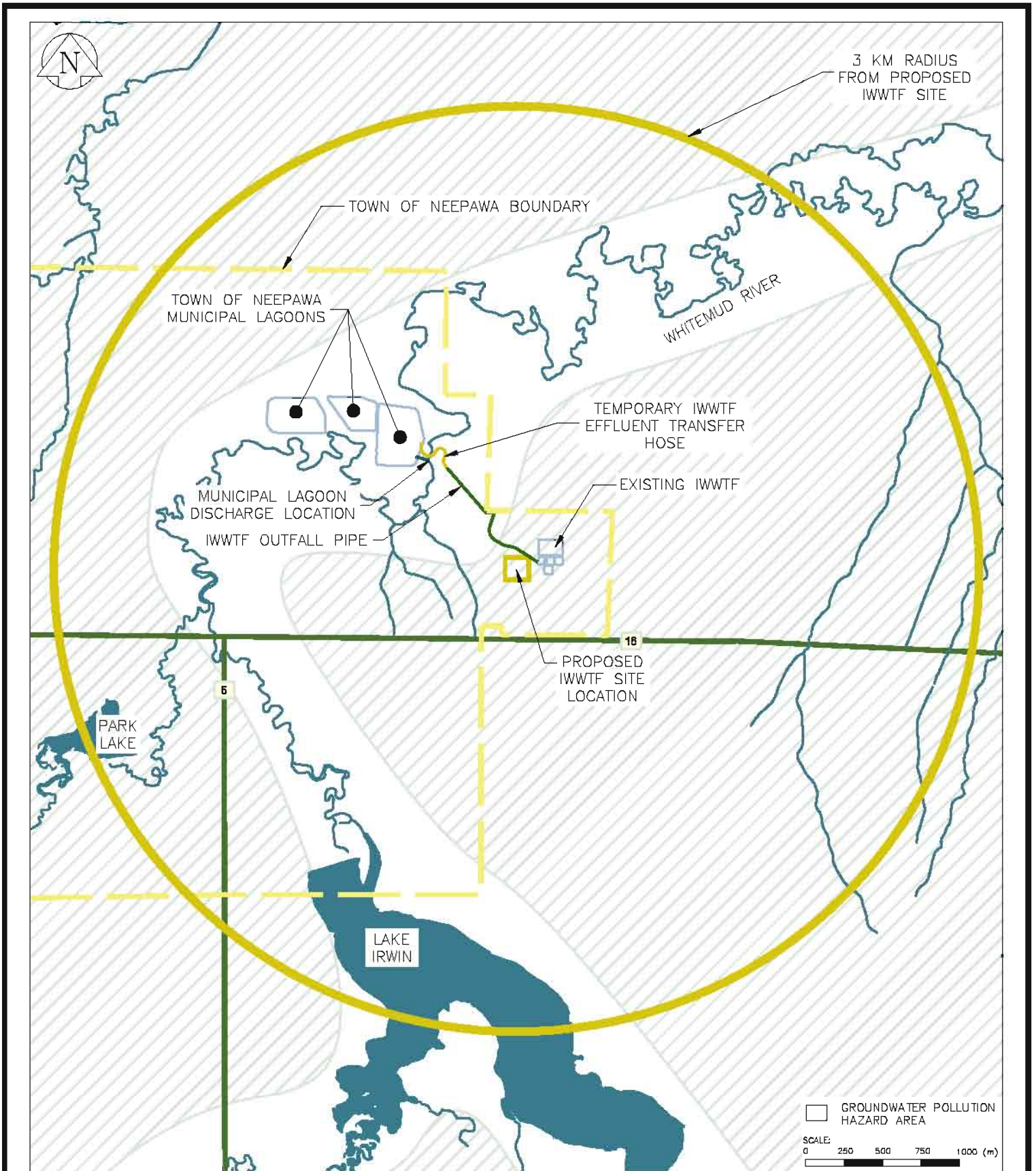
Earth Tech (Canada) Inc. Winnipeg, Manitoba 804.477.8861

IWTF UPGRADE
ENVIRONMENTAL IMPACT ASSESSMENT
NEEPAWA, MANITOBA



HYDROMETRIC AND WATER QUALITY STATIONS
INDUSTRIAL WASTEWATER TREATMENT FACILITY
NEEPAWA, MANITOBA

designed	scale	yy-mm-dd
drawn	BAR	08-06-13
AZ	project no.	97297
checked	drawing no	rev
SJB	FIGURE 2.8	
approved		



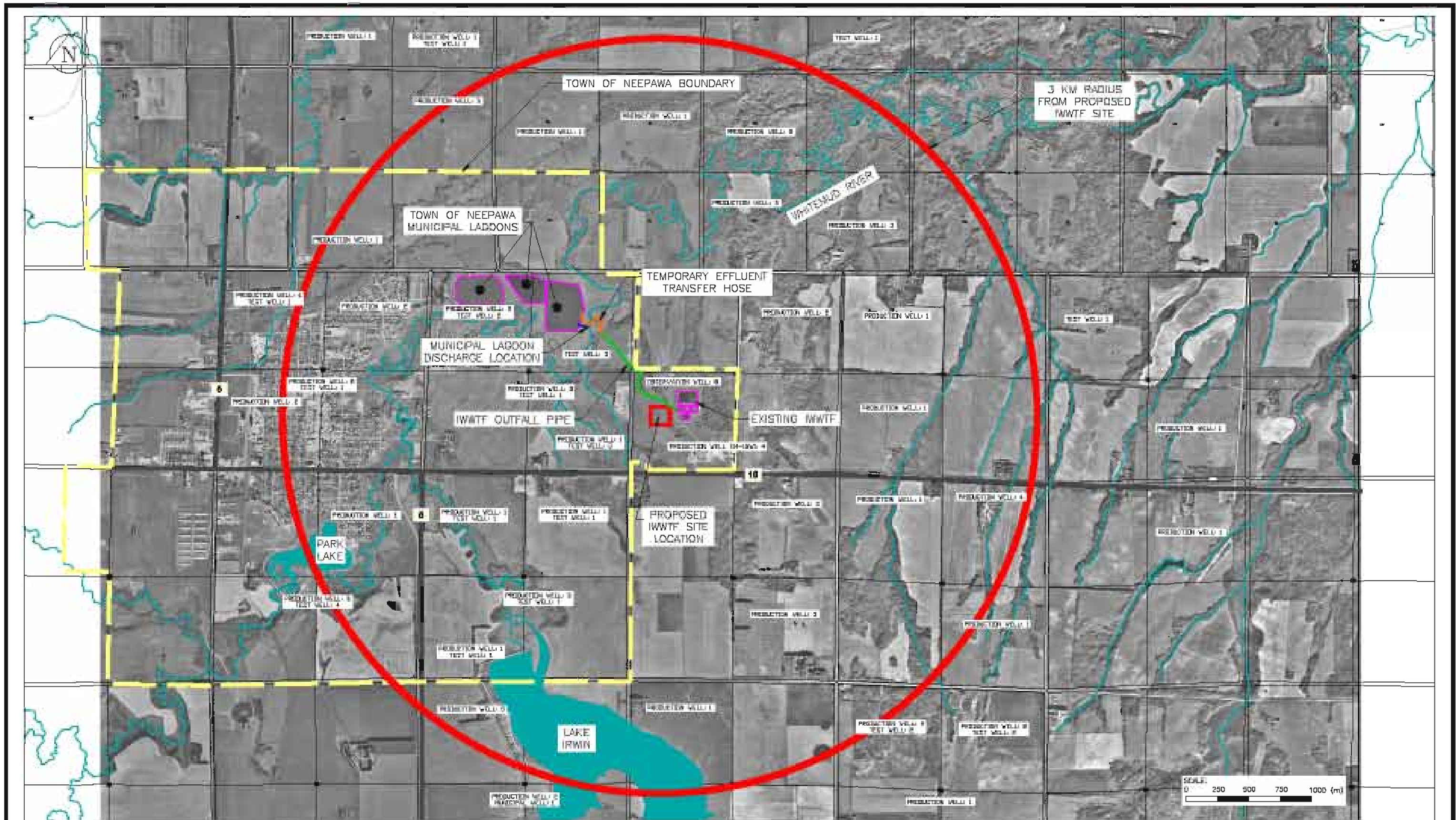
Source: Province of Manitoba, Department of Mines, Resources and Environmental Management, 1978.



Earth Tech (Canada) Inc. Winnipeg, Manitoba 204.479.5681

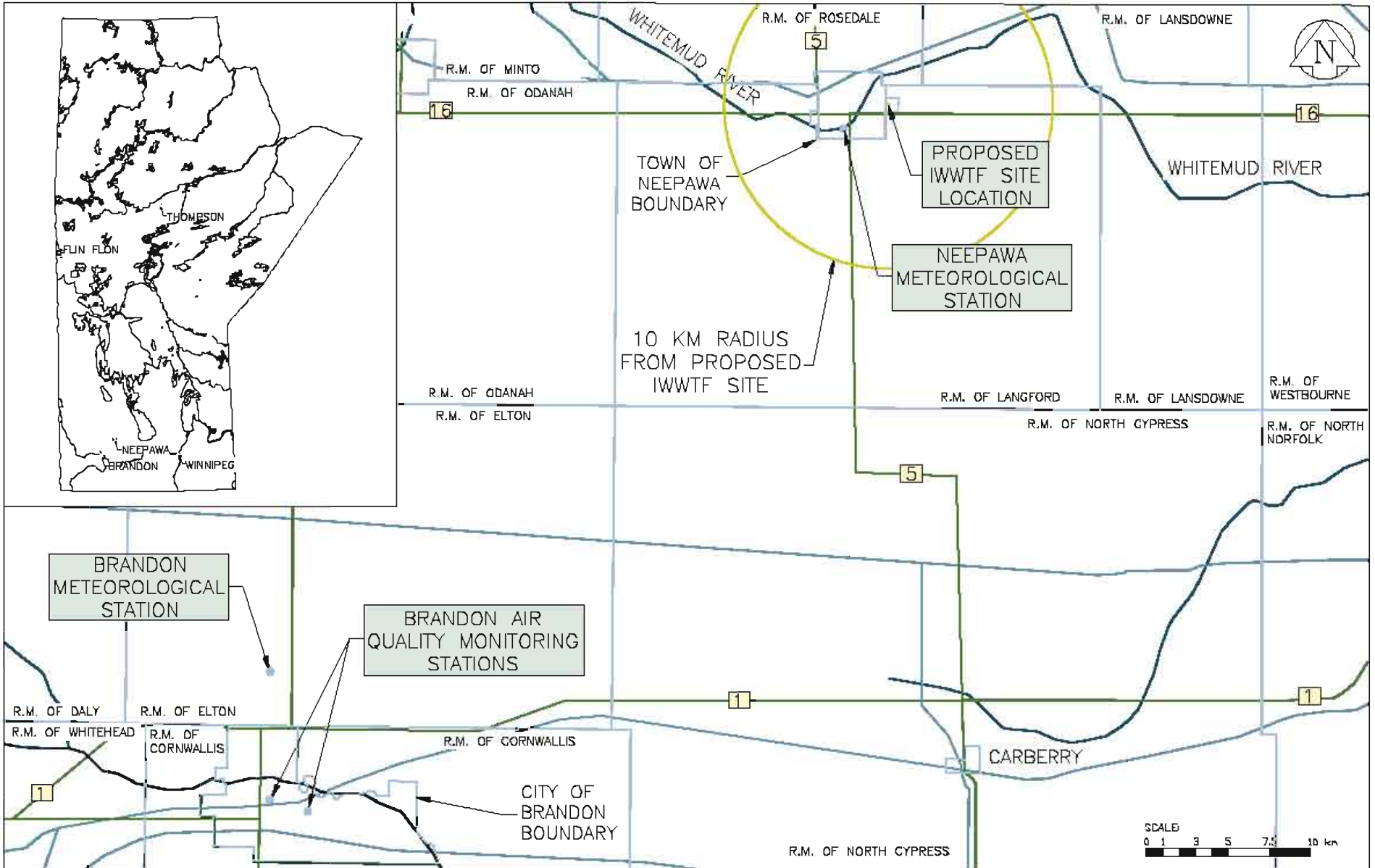
**GROUNDWATER POLLUTION HAZARD MAP
INDUSTRIAL WASTEWATER TREATMENT FACILITY
NEEPAWA, MANITOBA**

designed	scale	yy-mm-dd
drawn	project no	
checked	drawing no.	rev.
approved	FIGURE 2.9	



Source: Manitoba Land Initiative, Digital Imagery: 4605560neg, 4605560seg, 4705560nwg, 4705560swg.

 Earth Tech (Canada) Inc. Winnipeg, Manitoba 204.477.5881	 Town of Neepawa	designed	scale	yy-mm-dd
		drawn	BAR	08-06-13
IWTF UPGRADE ENVIRONMENTAL IMPACT ASSESSMENT NEEPAWA, MANITOBA		checked	project no.	
		SJB	97297	
GROUNDWATER WELLS INDUSTRIAL WASTEWATER TREATMENT FACILITY NEEPAWA, MANITOBA		approved	drawing no.	rev.
			FIGURE 2.10	



Source: Manitoba Land Initiative, Base Maps: 1:2,000,000.



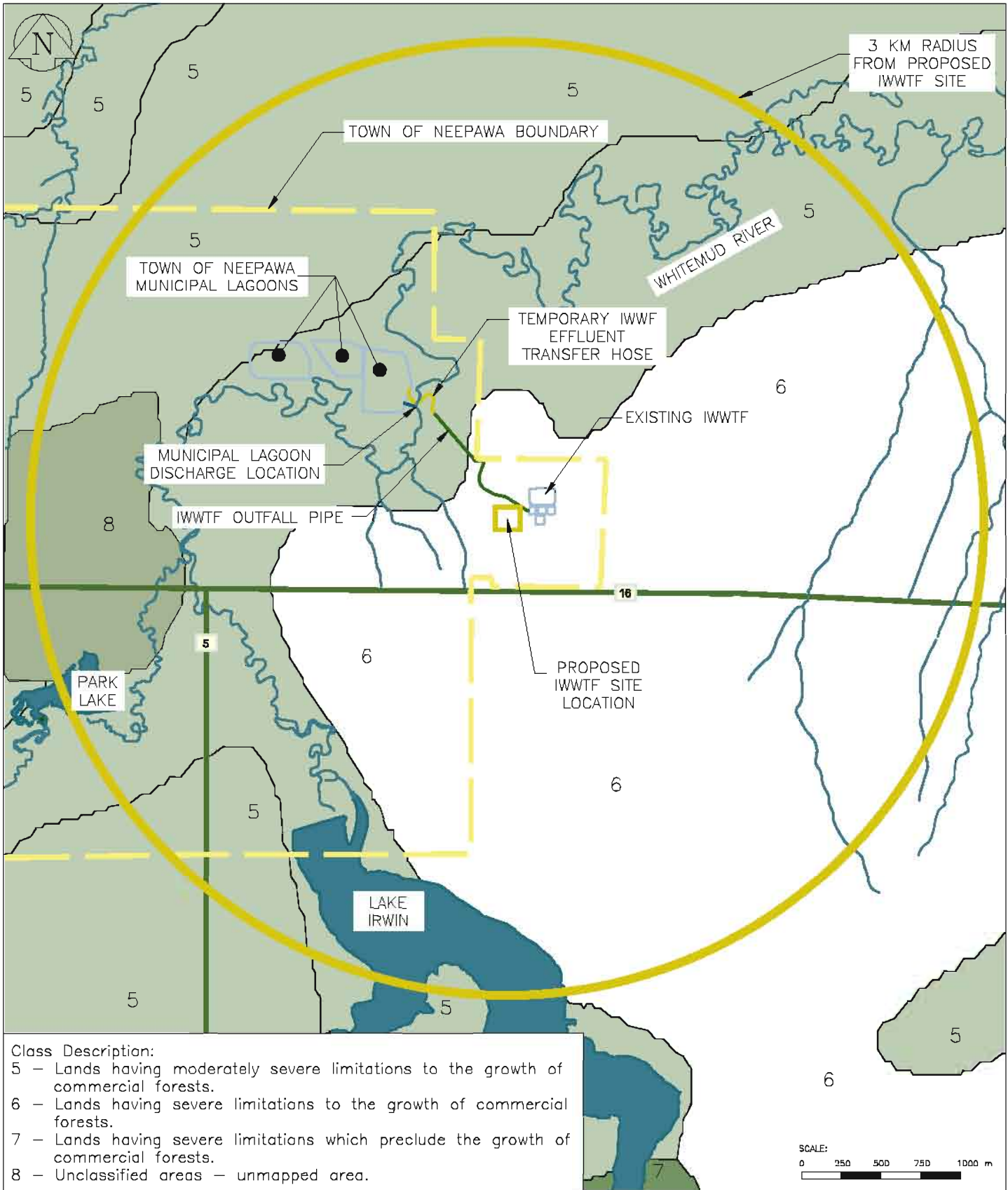
Earth Tech (Canada) Inc. Winnipeg, Manitoba 204.479.5881

IWWTF UPGRADE
ENVIRONMENTAL IMPACT ASSESSMENT
NEEPAWA, MANITOBA



NEAREST METEOROLOGICAL AND AIR QUALITY STATIONS
INDUSTRIAL WASTEWATER TREATMENT FACILITY
NEEPAWA, MANITOBA

designed	BAR	yy-mm-dd	08-06-13
drawn	AZ	project no.	97297
checked	SJB	drawing no.	FIGURE 2.11
approved		rev.	



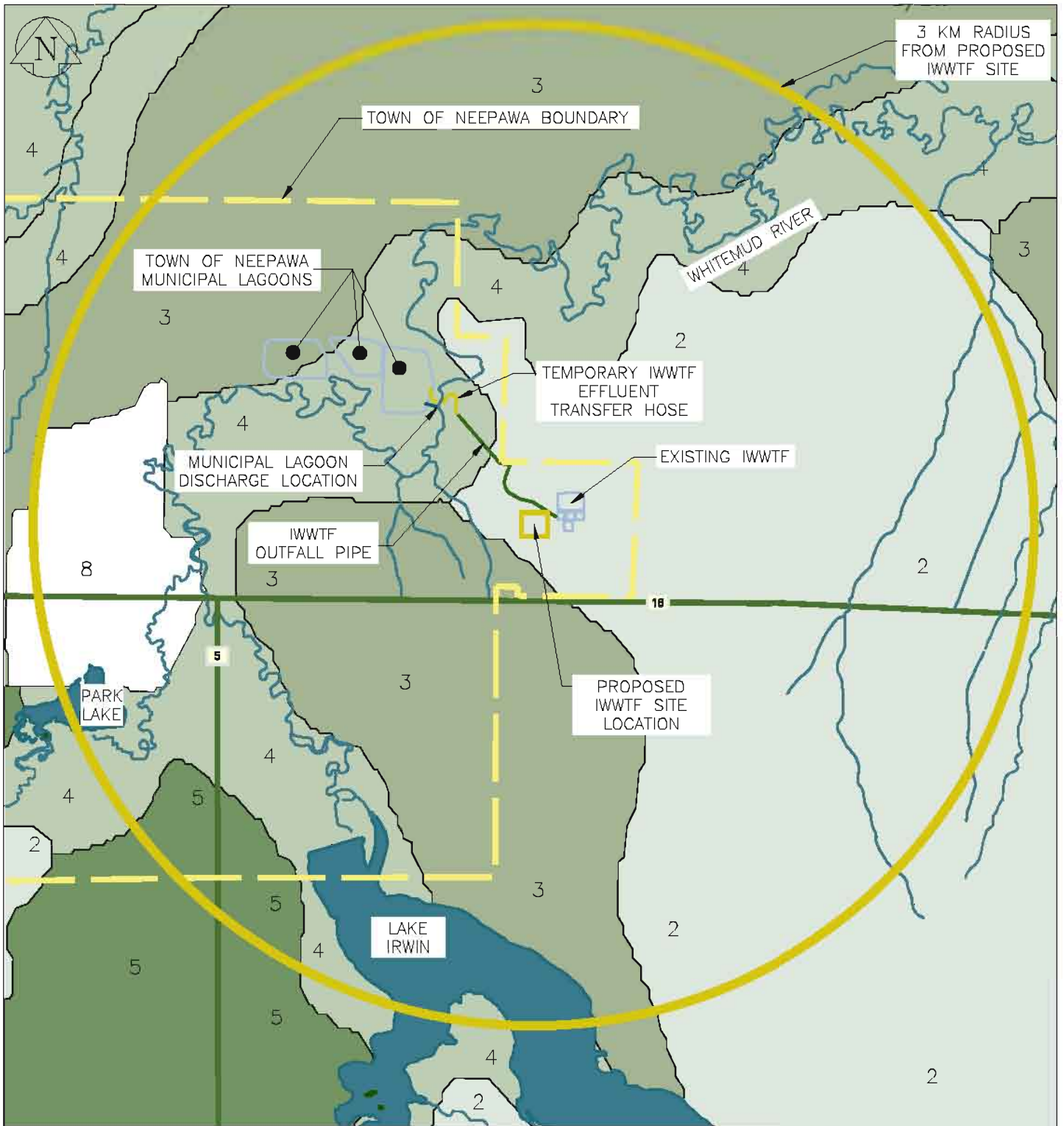
Source: Canada Land Inventory, Soil Capability for Forestry - 62j, 2008.



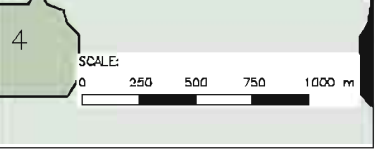
Earth Tech (Canada) Inc. Winnipeg, Manitoba R2N 4Y7 5581

**SOIL CAPABILITY FOR FORESTRY
 INDUSTRIAL WASTEWATER TREATMENT FACILITY
 NEEPAWA, MANITOBA**

designed	scale	yy-mm-dd
drawn	project no.	
checked	drawing no.	rev.
approved	FIGURE 2.12	



Class Description:
 2 - Lands in this class have very slight limitations to the production of ungulates.
 3 - Lands in this class have slight limitations to the production of ungulates.
 4 - Lands in this class have moderate limitations to the production of ungulates.
 5 - Lands in this class have moderately severe limitations to the production of ungulates.
 8 - Unclassified area - unmapped area.

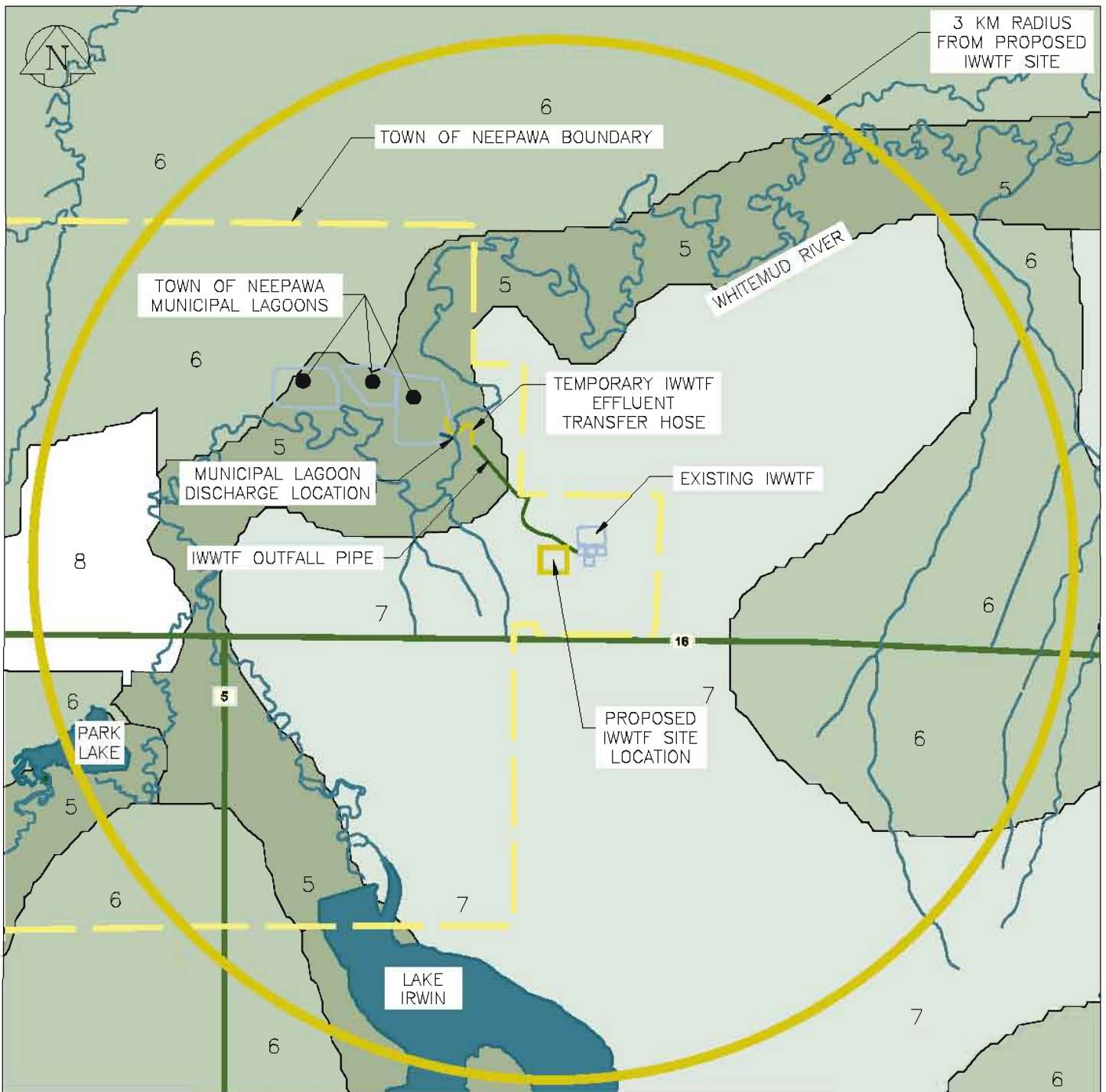


Source: Canada Land Inventory, Land Capability for Ungulates - 62j, 2008.



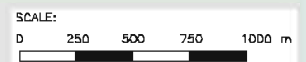
**LAND CAPABILITY FOR UNGULATES
 INDUSTRIAL WASTEWATER TREATMENT FACILITY
 NEEPAWA, MANITOBA**

designed	scale	yy-mm-dd
drawn	BAR	08-06-13
AZ	project no.	97297
checked	drawing no.	rev.
SJB	FIGURE 2.13	
approved		



Class Description:

- 5 – Lands in this class have moderately severe limitations to the production of waterfowl.
- 6 – Lands in this class have severe limitations to the production of waterfowl.
- 7 – Lands in this class have such severe limitations that almost no waterfowl are produced.
- 8 – Special cases – unmapped area.



Source: Canada Land Inventory, Land Capability for Waterfowl – 62j, 2008.



Earth Tech (Canada) Inc. Winnipeg, Manitoba R0L4T7P, 0861

**LAND CAPABILITY FOR WATERFOWL
INDUSTRIAL WASTEWATER TREATMENT FACILITY
NEEPAWA, MANITOBA**

designed	scale	yy-mm-dd
drawn	project no.	
checked	drawing no.	rev.
approved	FIGURE 2.14	

R.M. OF LANGFORD

MAP REVISED:-

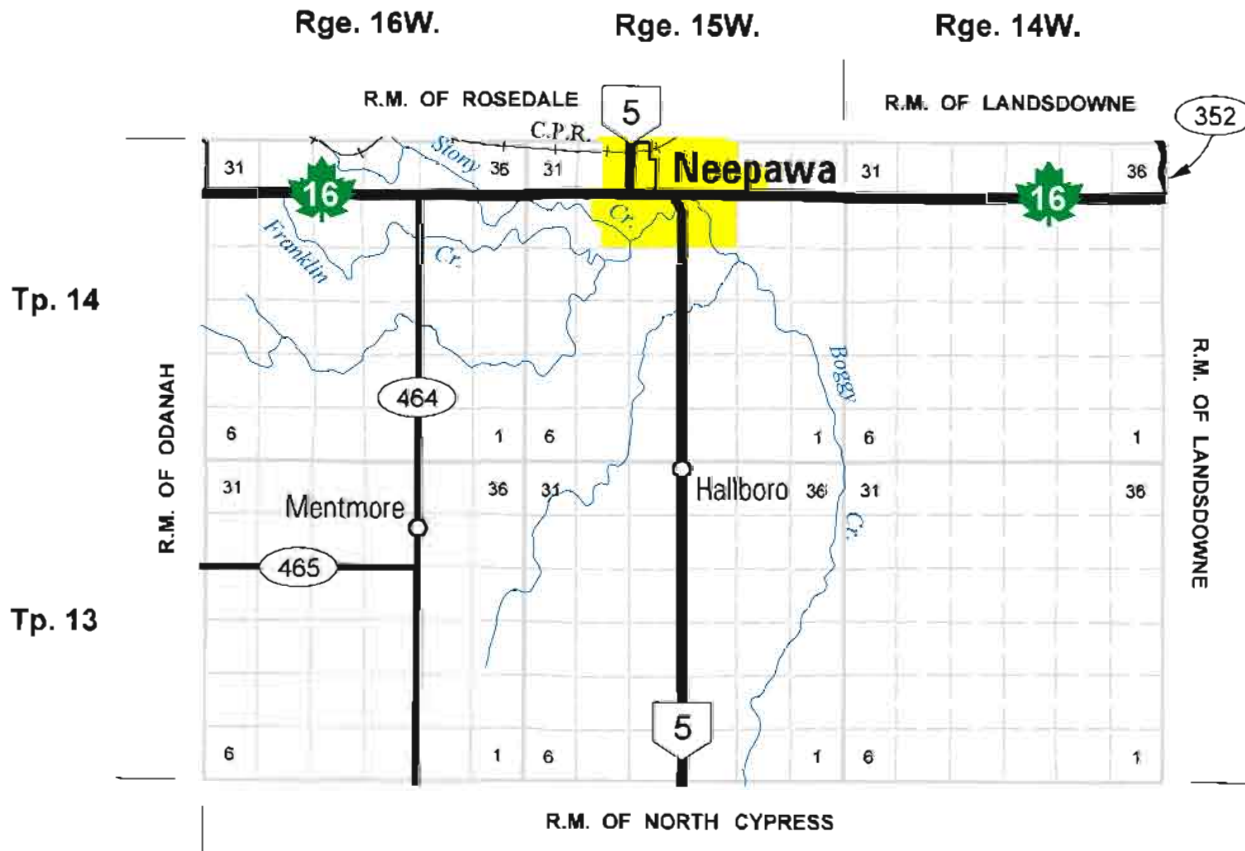


0 5
SCALE IN KILOMETRES

MANITOBA
TRANSPORTATION AND GOVERNMENT SERVICES
HIGHWAY PLANNING AND DESIGN BRANCH
DRAFTING SECTION
WINNIPEG
APRIL, 2002

LEGEND

TRANS-CANADA HIGHWAY		ACCESS ROADS	
PROVINCIAL TRUNK HIGHWAYS		RAILWAYS	
PROVINCIAL ROADS			



Source: Manitoba Land Initiative, Municipal Maps – Langford No. 46, 2008.



Earth Tech (Canada) Inc. Winnipeg, Manitoba R0M 4P7 B8K1

**R.M. OF LANGFORD
INDUSTRIAL WASTEWATER TREATMENT FACILITY
NEEPAWA, MANITOBA**

designed	scale	yy-mm-dd
drawn	project no	
checked	drawing no	rev
approved		

BAR 08-06-13
AZ 97297
SJB
FIGURE 2.15

R.M. OF LANSDOWNE

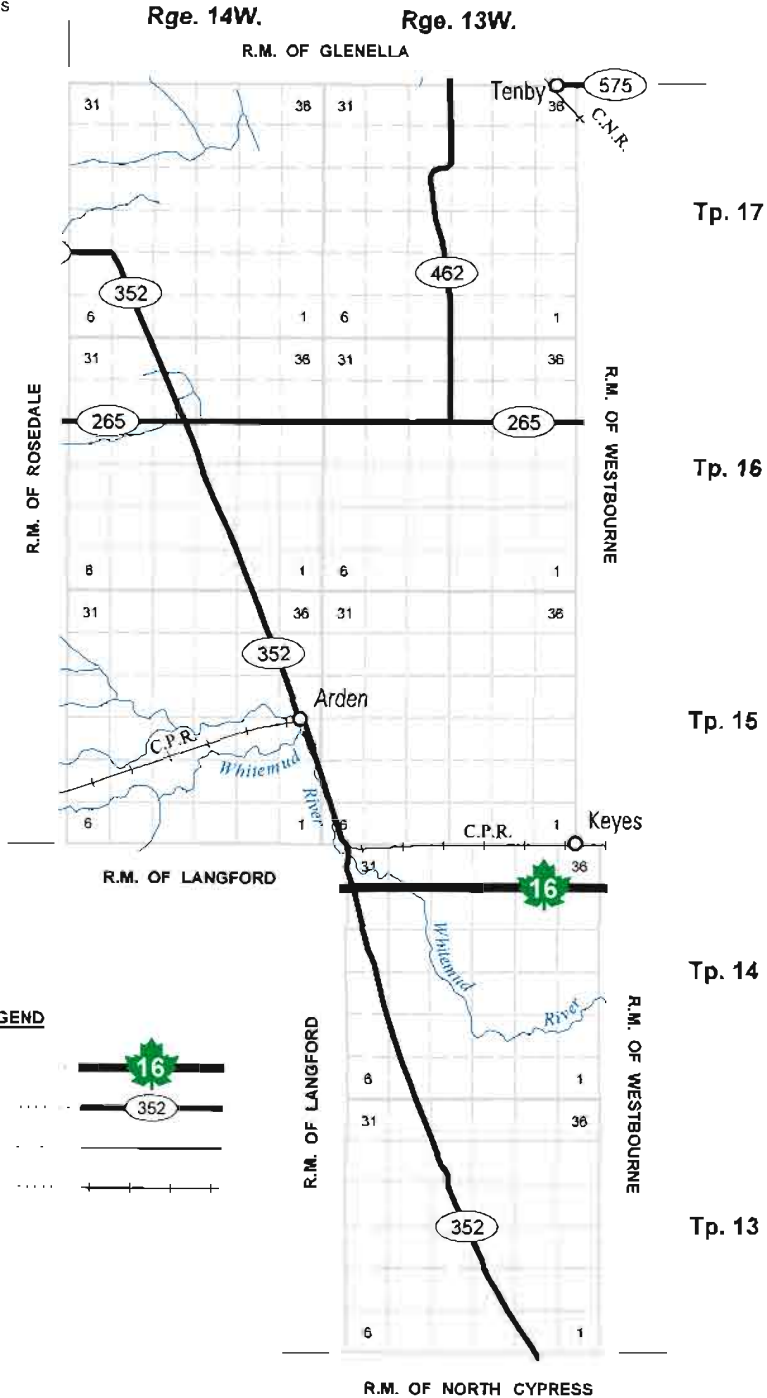
No. 47

MAP REVISED -



0 5
SCALE IN KILOMETRES

MANITOBA
TRANSPORTATION AND GOVERNMENT SERVICES
HIGHWAY PLANNING AND DESIGN BRANCH
DRAFTING SECTION
WINNIPEG
APRIL, 2002



Source: Manitoba Land Initiative, Municipal Maps – Lansdowne No. 47, 2008.



Earth Tech (Canada) Inc. Winnipeg, Manitoba R04 4P7 5S0

R.M. OF LANSDOWNE
INDUSTRIAL WASTEWATER TREATMENT FACILITY
NEEPAWA, MANITOBA

designed	scale	yy-mm-dd
drawn	project no.	
checked	drawing no.	rev.
approved	FIGURE 2.16	

R.M. OF ROSEDALE

No. 77



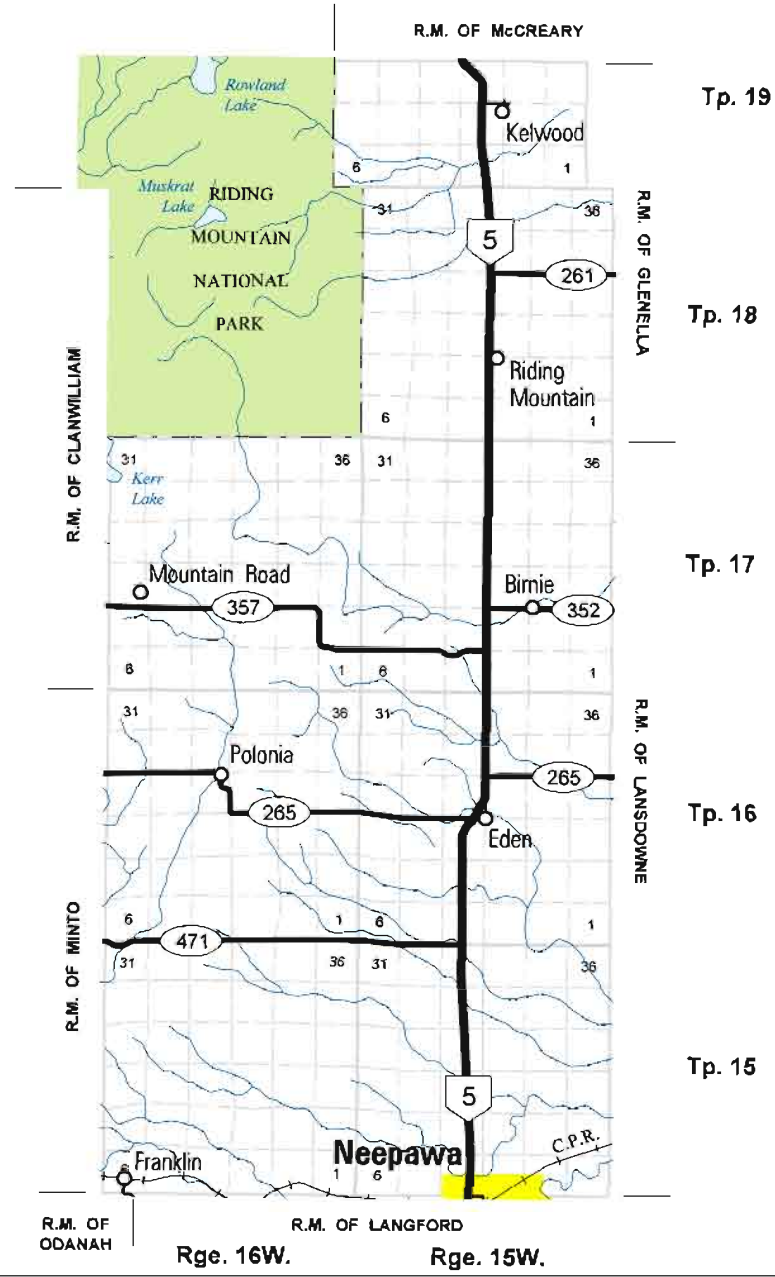
0 5
SCALE IN KILOMETRES

MANITOBA
TRANSPORTATION AND GOVERNMENT SERVICES
HIGHWAY PLANNING AND DESIGN BRANCH
DRAFTING SECTION
WINNIPEG
FEBRUARY, 2003

MAP REVISED:-

LEGEND

- PROVINCIAL TRUNK HIGHWAYS ACCESS ROADS
- PROVINCIAL ROADS ... RAILWAYS



Source: Manitoba Land Initiative, Municipal Maps – Rosedale No. 77, 2008.



Earth Tech (Canada) Inc. Winnipeg, Manitoba 204.497.5581

R.M. OF ROSEDALE
INDUSTRIAL WASTEWATER TREATMENT FACILITY
NEEPAWA, MANITOBA

designed	scale	yy-mm-dd
drawn	project no.	
checked	drawing no.	rev
approved	FIGURE 2.17	