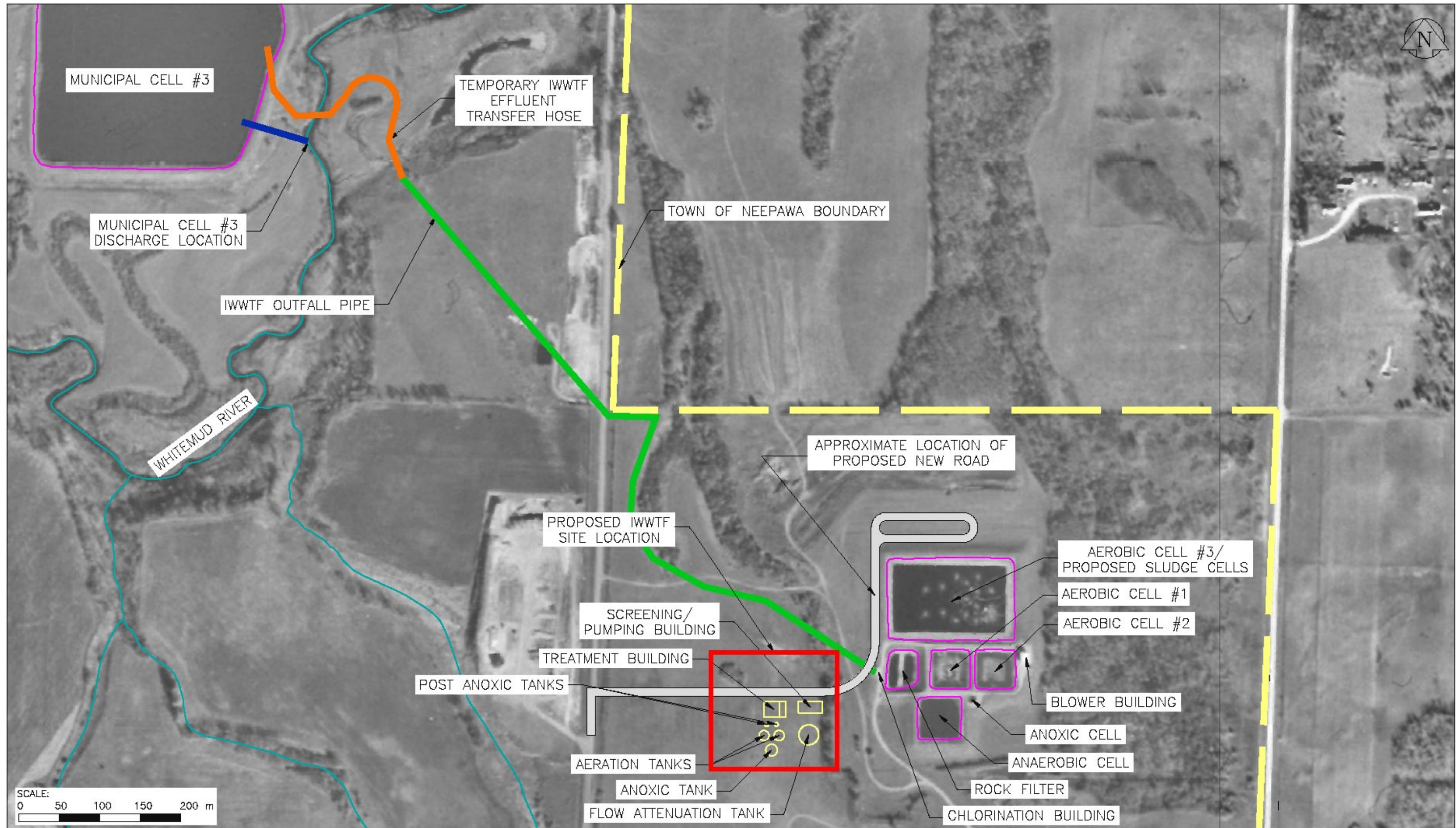


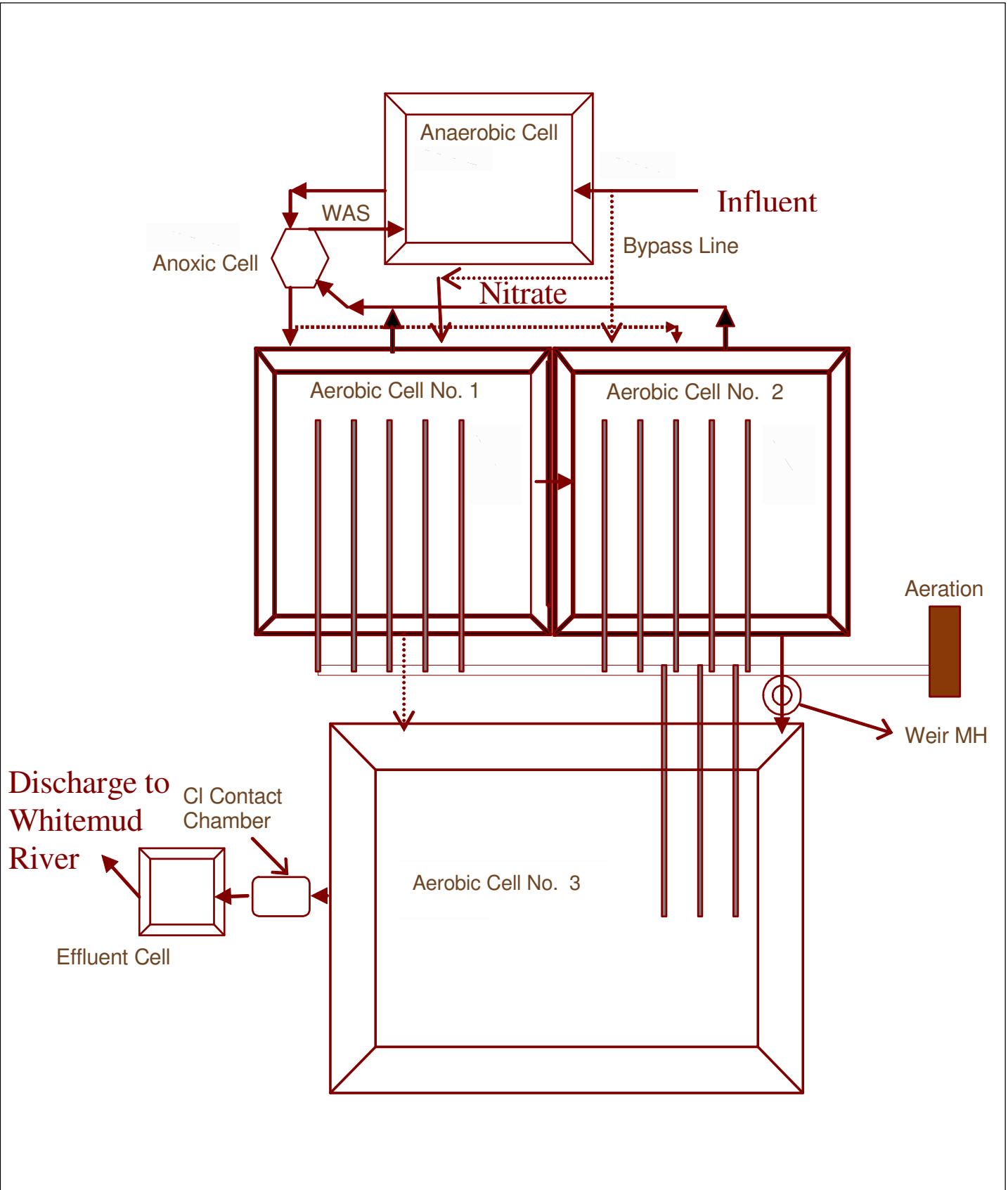


Figures



Source: Manitoba Land Initiative, Digital Imagery: 4605560neg, 4605560seg, 4705560nwg, 4705560swg.

 Earth Tech (Canada) Inc. Winnipeg, Manitoba 904.479.5561	 Neepawa Land of Plenty	designed	scale	yy-mm-dd
		drawn	BAR	08-06-13
IWWTF UPGRADE ENVIRONMENTAL IMPACT ASSESSMENT NEEPAWA, MANITOBA		project no. 97297		drawing no. FIGURE 3.1
		checked	drawing no.	
EXISTING AND PROPOSED INFRASTRUCTURE INDUSTRIAL WASTEWATER TREATMENT FACILITY NEEPAWA, MANITOBA		approved	rev.	



Source: Earth Tech (Canada) Inc., Spring Hill Wastewater Treatment Plant, Neepawa, Manitoba – Phase 1 Study Final Report, 2002.



Earth Tech (Canada) Inc. Winnipeg, Manitoba 204.477.5381

CONCEPTUAL LAYOUT OF EXISTING IWTF
INDUSTRIAL WASTEWATER TREATMENT FACILITY
NEEPAWA, MANITOBA

designed ET 2002	scale N. T. S.	yy-mm-dd 08-06-13
drawn AZ	project no. 97297	
checked SJB	drawing no.	rev.
approved	FIGURE 3.2	

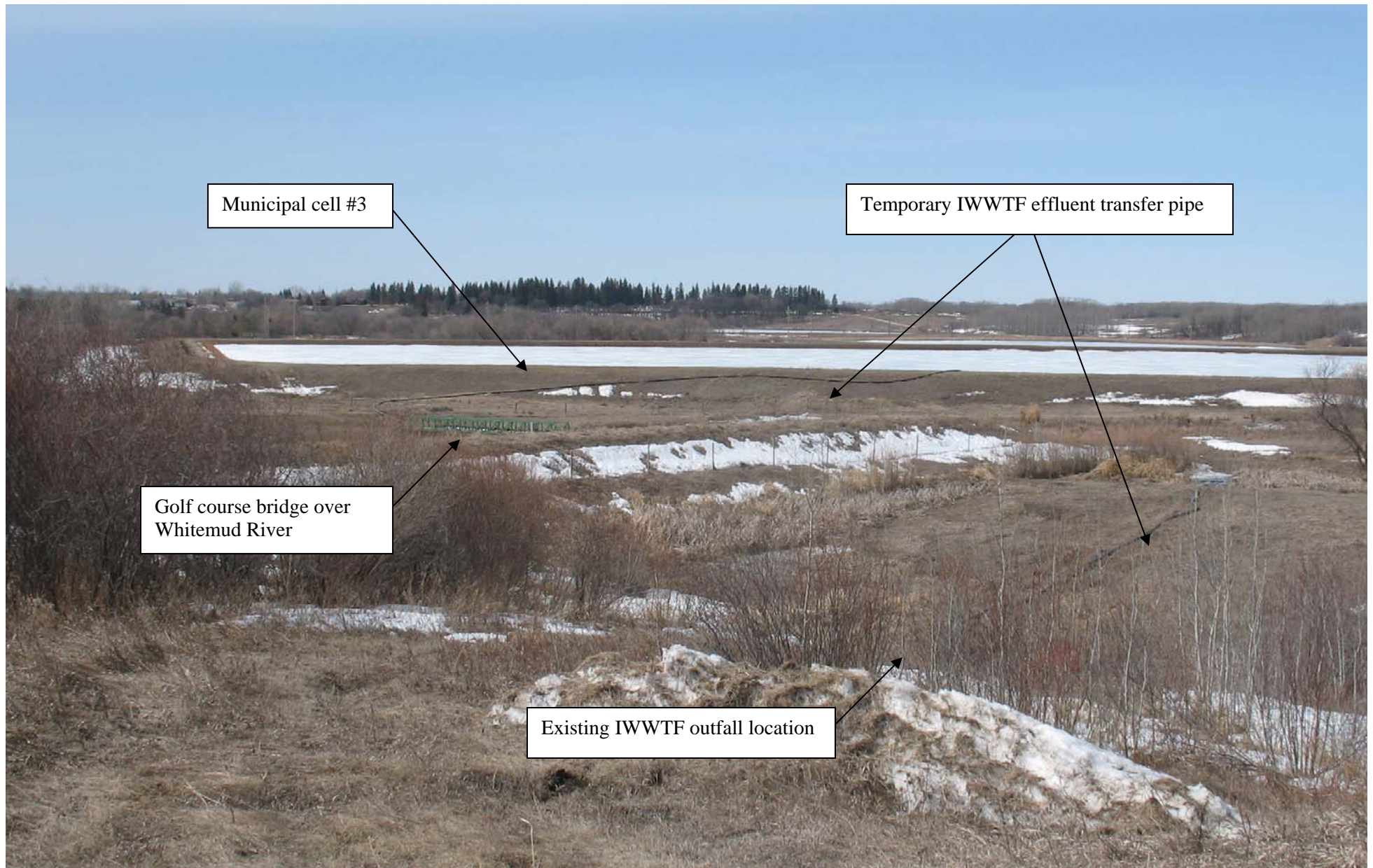


Figure 3.3: Temporary IWWTF Effluent Transfer Pipe – Northwest – Facing northwest towards the Town of Neepawa municipal cell #3 showing the temporary effluent transfer pipe.



Temporary IWWTF effluent transfer pipe

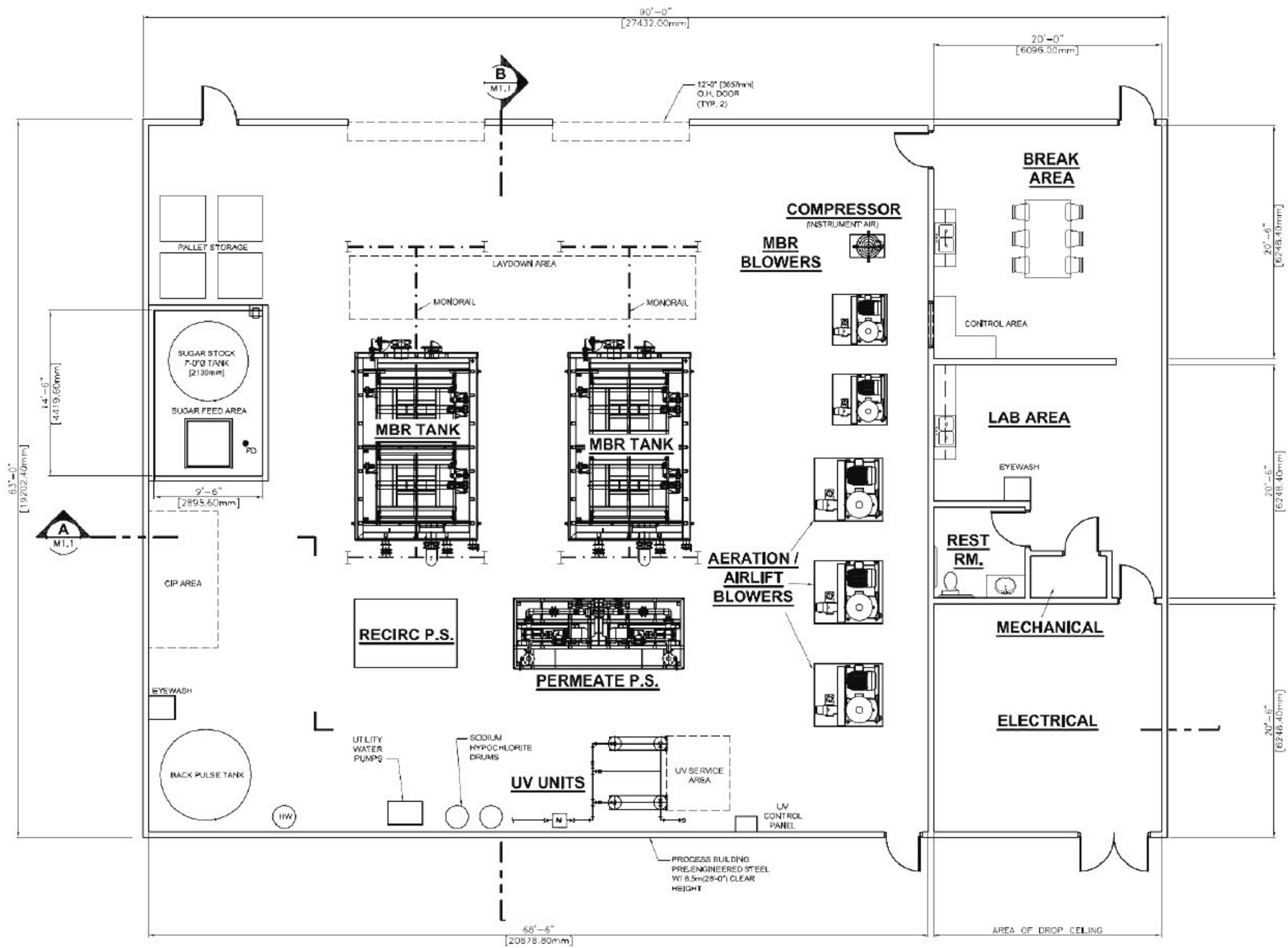
Golf course bridge

Whitemud River

Figure 3.4: Temporary IWWTF Effluent Transfer Pipe – South – Facing south towards the golf course bridge showing the temporary IWWTF effluent transfer pipe.



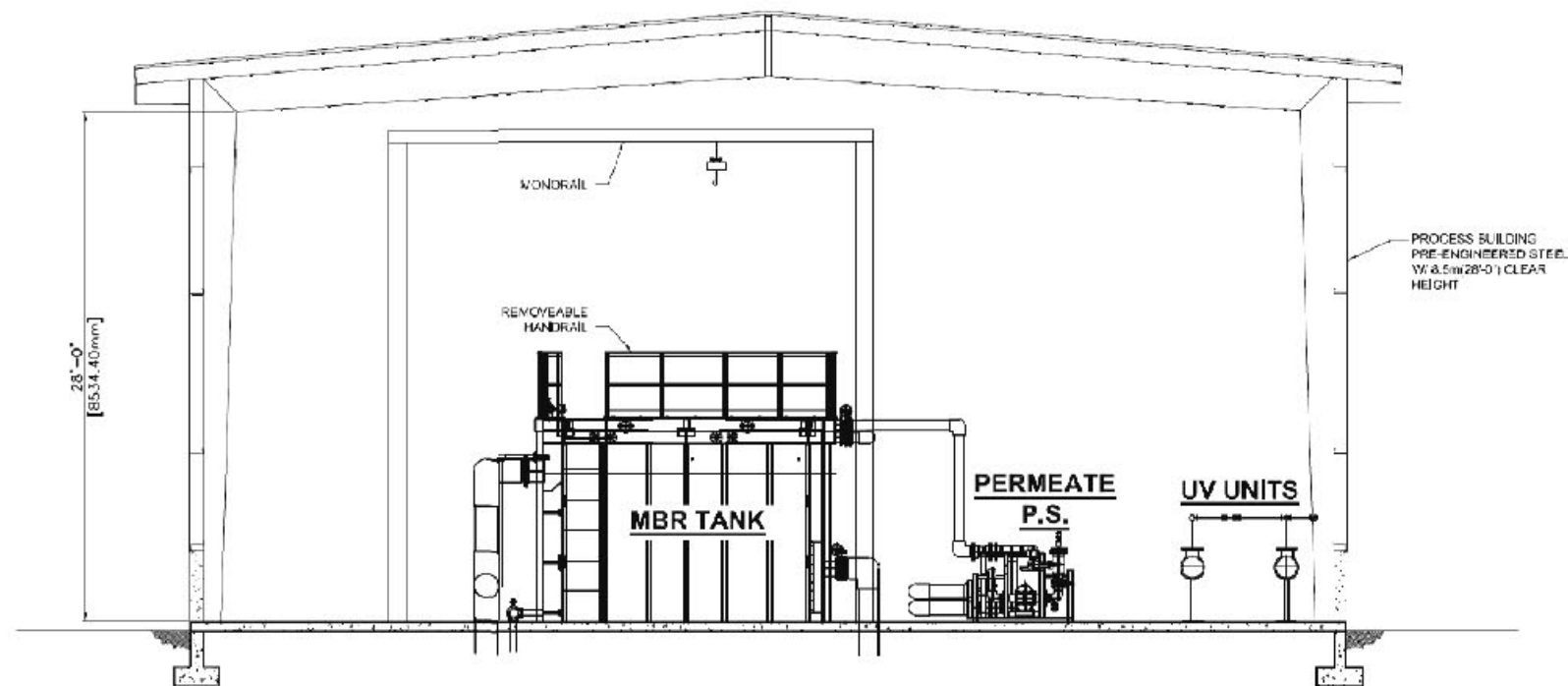
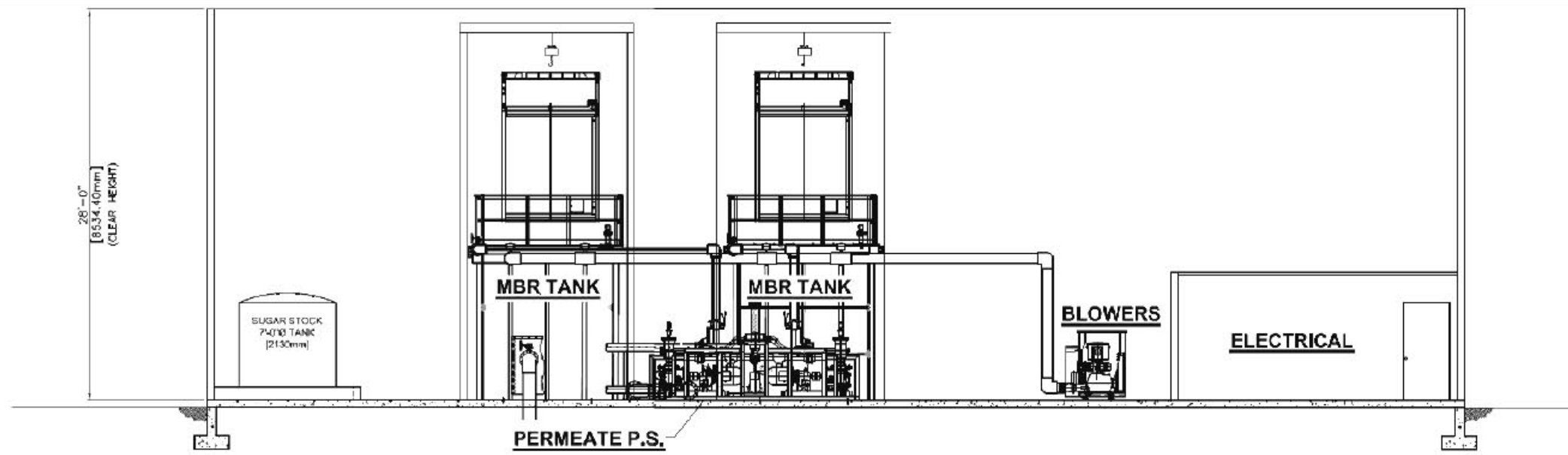
Figure 3.5: IWWTF Outfall Location – Southwest – Facing southwest towards the existing IWWTF outfall location and the temporary IWWTF effluent transfer pipe.



PRELIMINARY
DO NOT USE FOR CONSTRUCTION

PHARMER ENGINEERING	EarthTech <small>Earth Tech (Canada) Inc. Winnipeg, Manitoba 204-477-5961</small>	Neepawa <small>Land of Plenty</small>	designed PHARMER	scale N T S	yy-mm-dd 08-06-13
			drawn BR	project no. 97297	
			checked SJB	drawing no.	rev.
			approved	FIGURE 4.1	

Source: Pharmer Engineering; Drawing M1.0; Treatment Building Plan



PRELIMINARY
DO NOT USE FOR CONSTRUCTION

PE PHARMER ENGINEERING

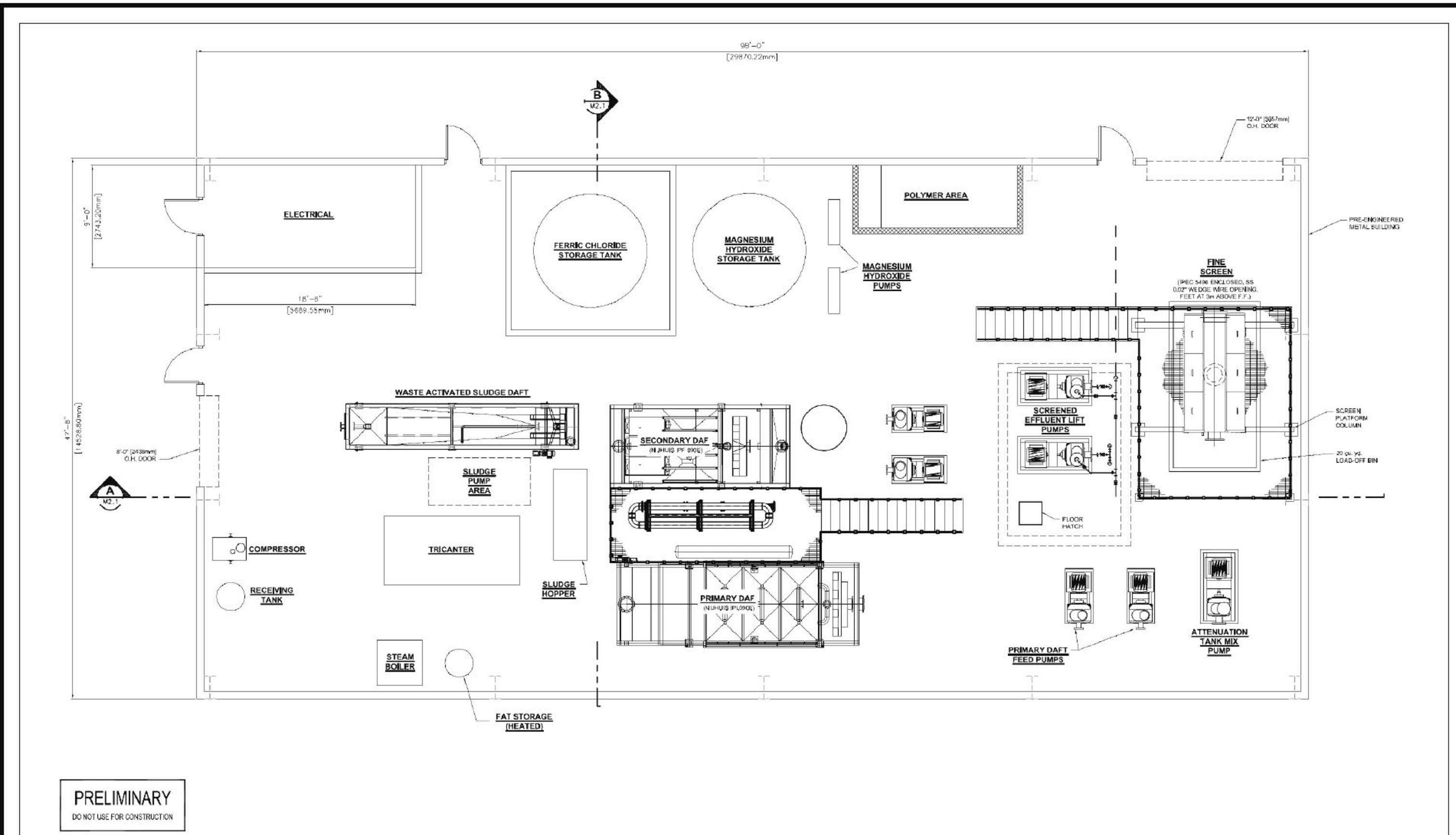
EarthTech
Earth Tech (Canada) Inc. Winnipeg, Manitoba 204.497.0261

IWWTF UPGRADE
ENVIRONMENTAL IMPACT ASSESSMENT
NEEPAWA, MANITOBA

Neepawa
Land of Plenty

TREATMENT BUILDING SECTION
INDUSTRIAL WASTEWATER TREATMENT FACILITY
NEEPAWA, MANITOBA

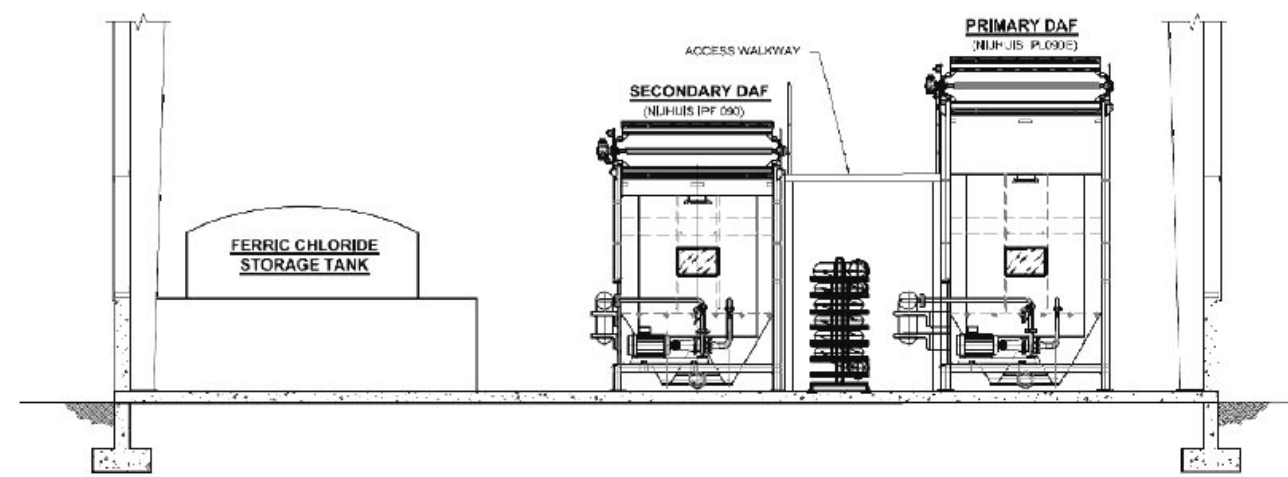
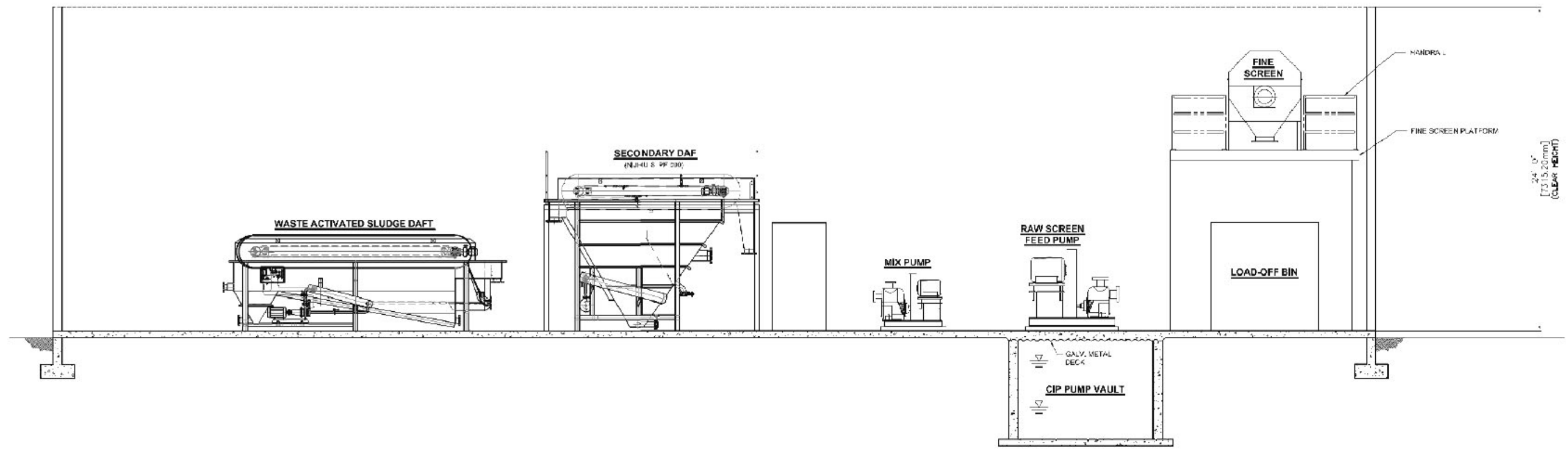
designed PHARMER	scale N T S	yy-mm-dd 08-06-13
drawn BR	project no. 97297	
checked SJB	drawing no.	rev.
approved	FIGURE 4.2	



PRELIMINARY
DO NOT USE FOR CONSTRUCTION




Source: Pharmer Engineering; Drawing M2.0; Screening / Pumping Building Plan

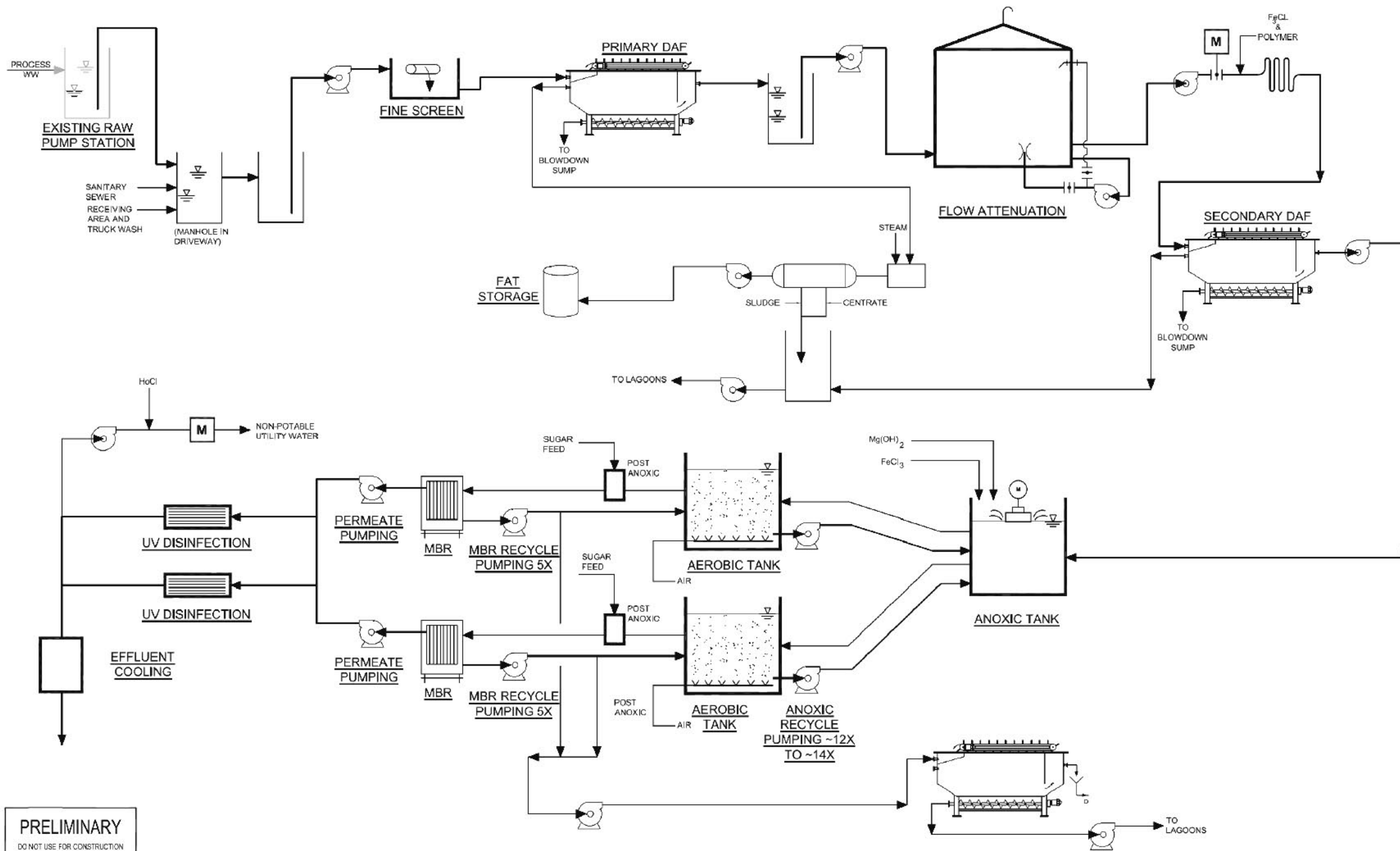
<p>PHARMER ENGINEERING</p>	<p>Earth Tech (Canada) Inc. Winnipeg, Manitoba 204.477.5961</p>	<p>Neepawa <i>Land of Plenty</i></p>	designed PHARMER	scale N.T.S.	yy-mm-dd 08-06-13
			drawn BR	project no. 97297	checked SJB
IWWTF UPGRADE ENVIRONMENTAL IMPACT ASSESSMENT NEEPAWA, MANITOBA			SCREENING / PUMPING BUILDING PLAN INDUSTRIAL WASTEWATER TREATMENT FACILITY NEEPAWA, MANITOBA		



PRELIMINARY
DO NOT USE FOR CONSTRUCTION

Source: Pharmer Engineering; Drawing M2.1; Screening / Pumping Building Sections

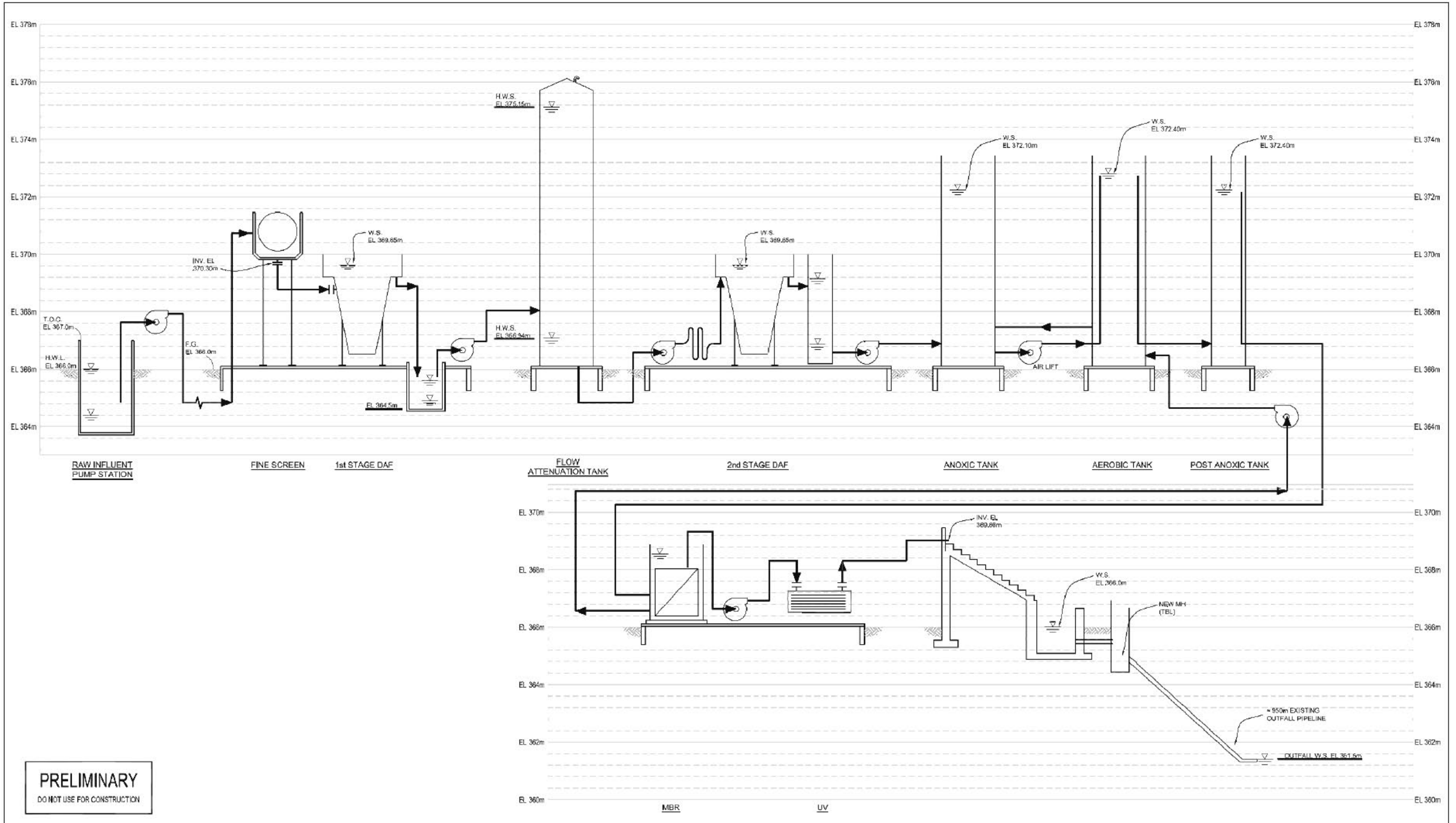
	 Earth Tech (Canada) Inc. Winnipeg, Manitoba 204.477.6361		designated PHARMER	scale N T S	yy-mm-dd 08-06-13
			drawn BR	project no. 97297	
	IWWTF UPGRADE ENVIRONMENTAL IMPACT ASSESSMENT NEEPAWA, MANITOBA	SCREENING / PUMPING BUILDING SECTIONS INDUSTRIAL WASTEWATER TREATMENT FACILITY NEEPAWA, MANITOBA	checked SJB	drawing no. FIGURE 4.4	rev.
			approved		



PRELIMINARY
DO NOT USE FOR CONSTRUCTION

Source: Pharmer Engineering; Drawing N0.0; Process Flow Diagram

			designed	scale	yy-mm-dd
			PHARMER	NTS	DB-06-13
			drawn	project no.	
			BR	97297	
			checked	drawing no.	rev.
			SJB		
			approved	FIGURE 4.5	
			IWWTF UPGRADE ENVIRONMENTAL IMPACT ASSESSMENT NEEPAWA, MANITOBA		
			PROCESS FLOW DIAGRAM INDUSTRIAL WASTEWATER TREATMENT FACILITY NEEPAWA, MANITOBA		



PRELIMINARY
DO NOT USE FOR CONSTRUCTION

Source: Pharmer Engineering; Drawing G1.0; Hydraulic Profile

			designed PHARMER	scale NTS	yy-mm-dd 08-06-13
			drawn BR	project no. 97297	
			checked SJB	drawing no.	rev.
			approved	FIGURE 4.6	