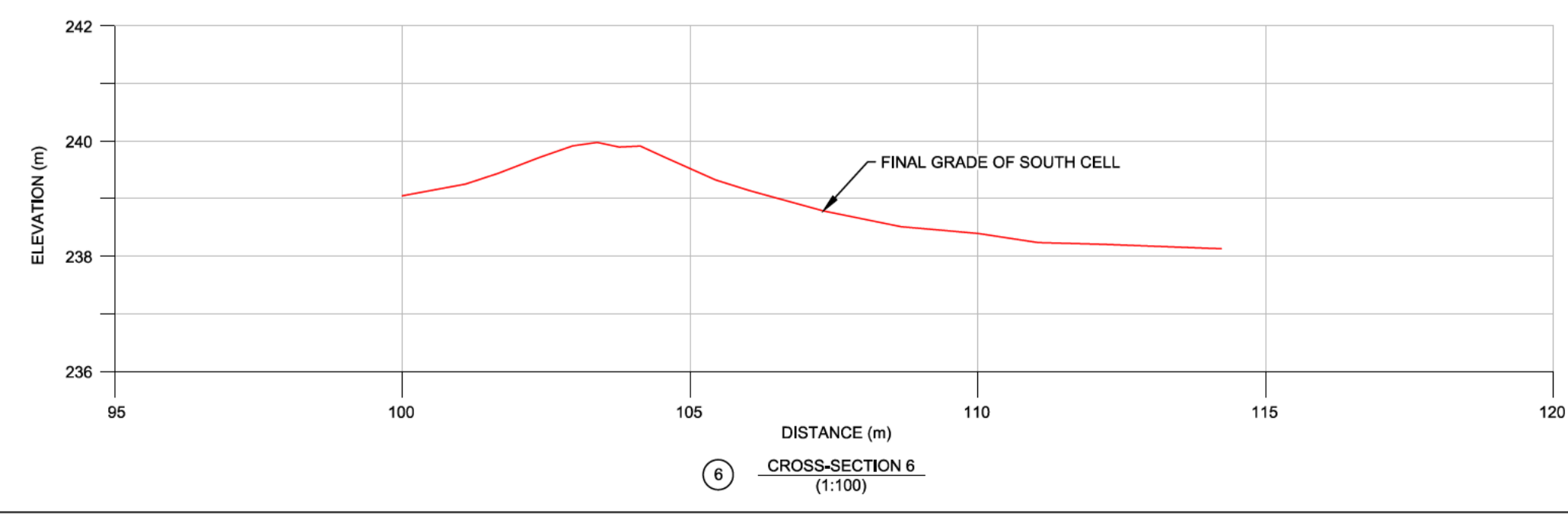
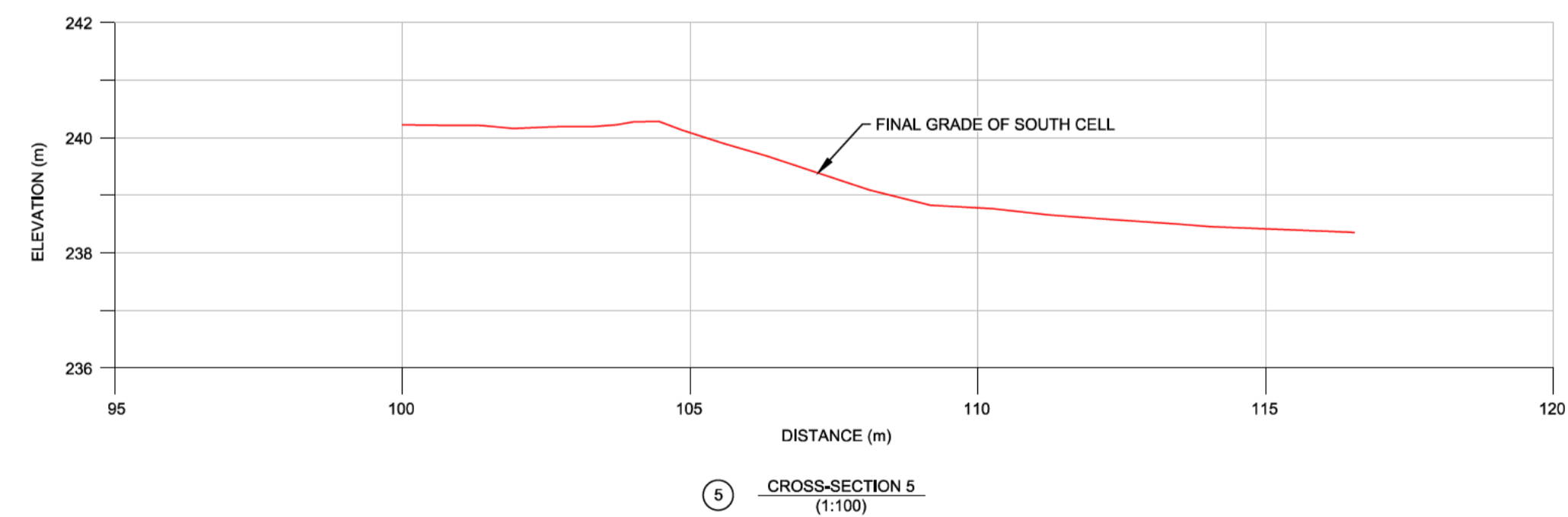
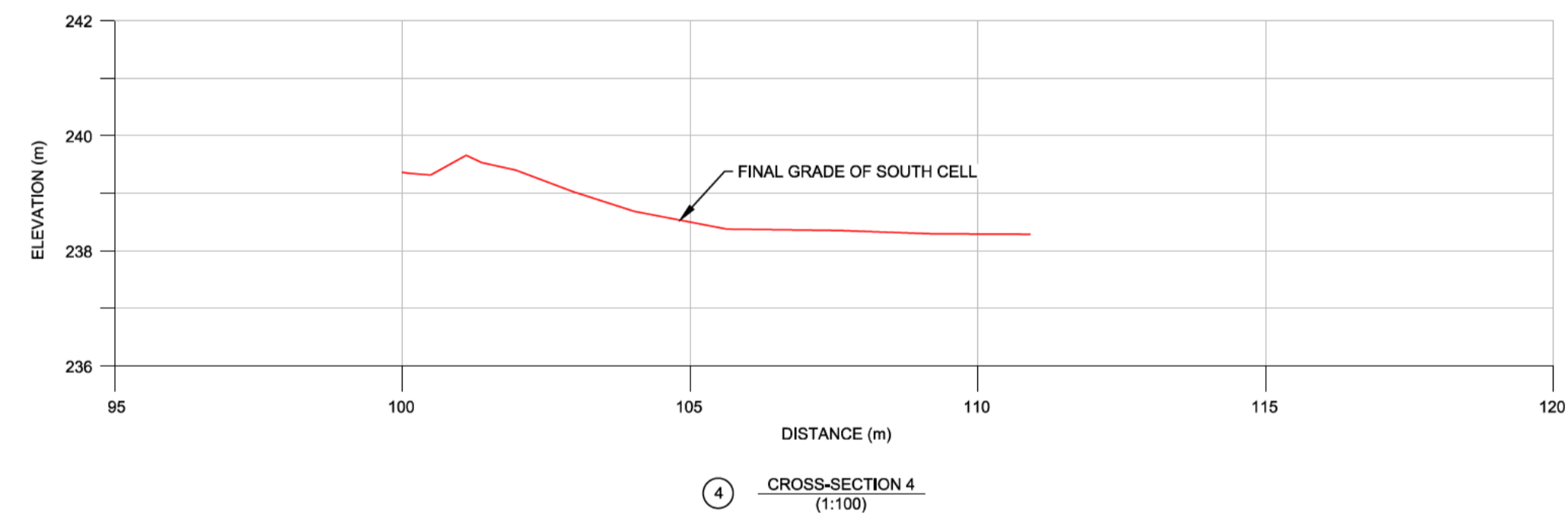
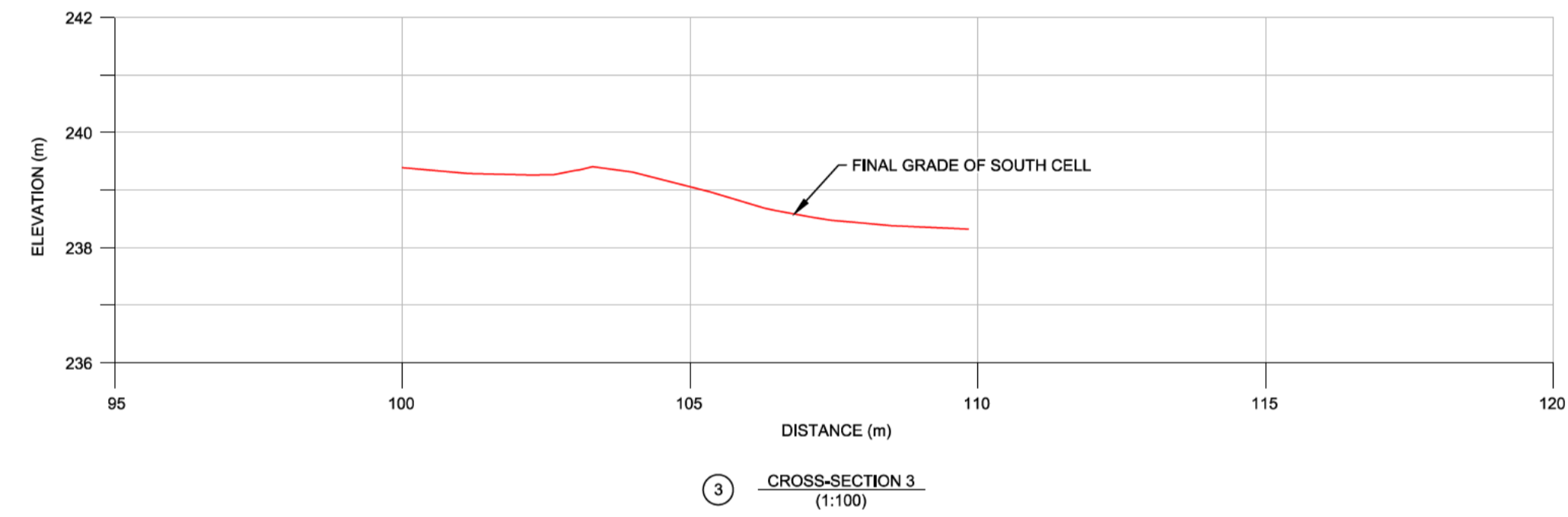
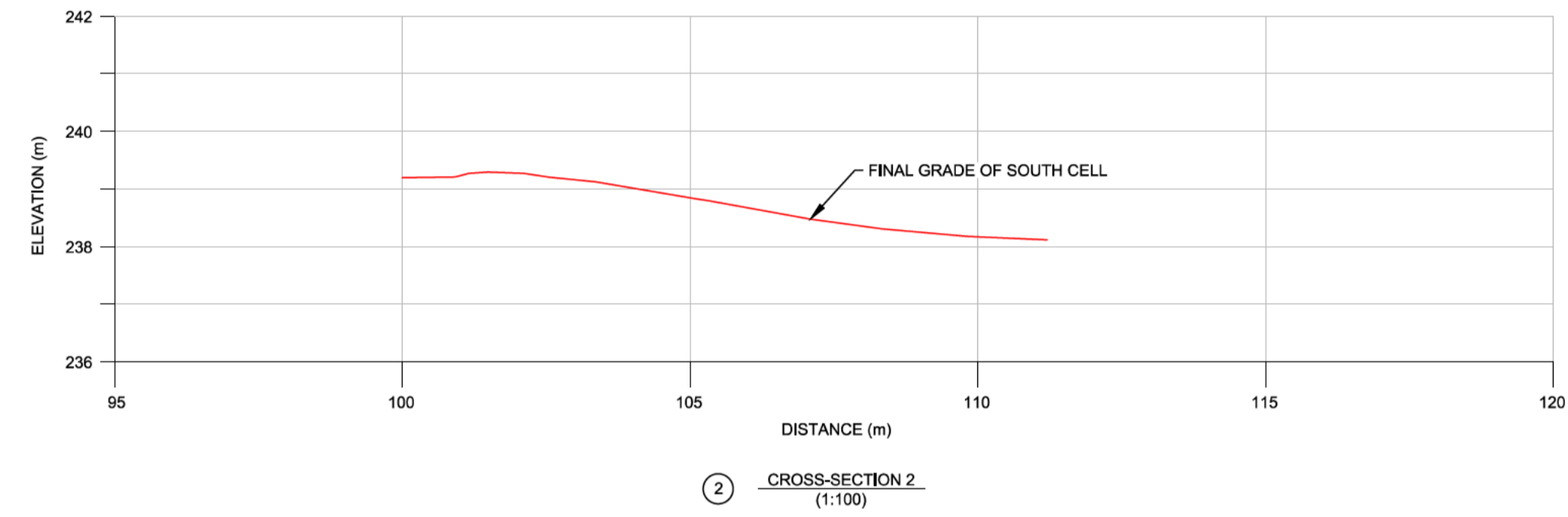
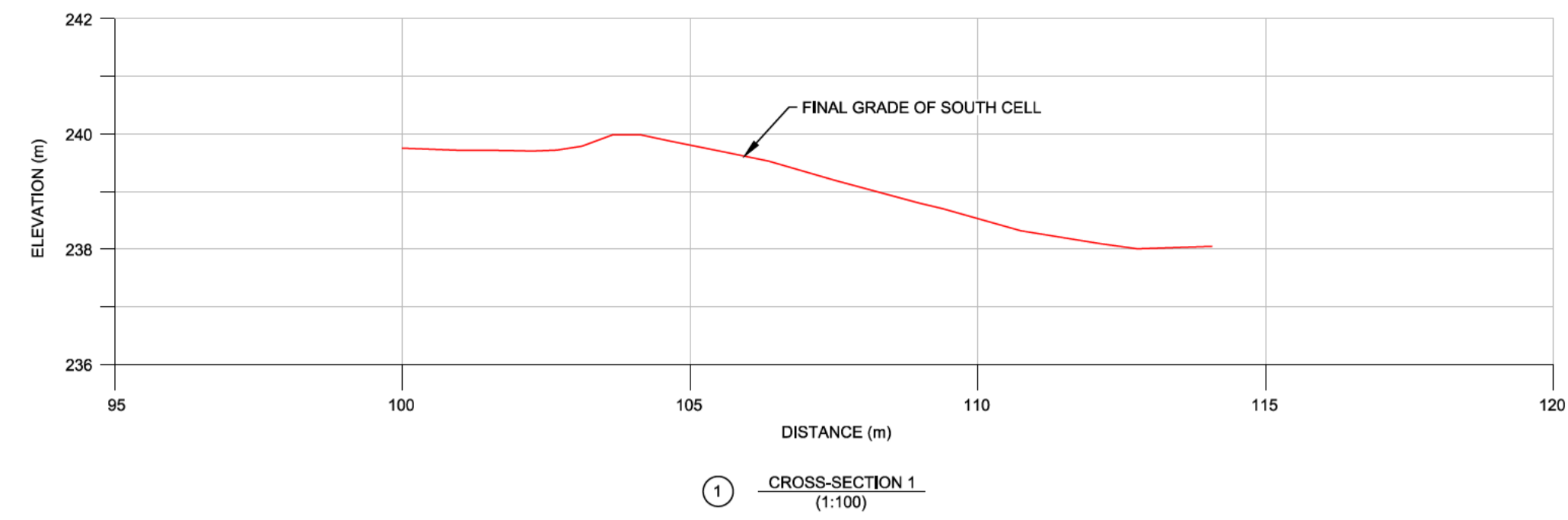
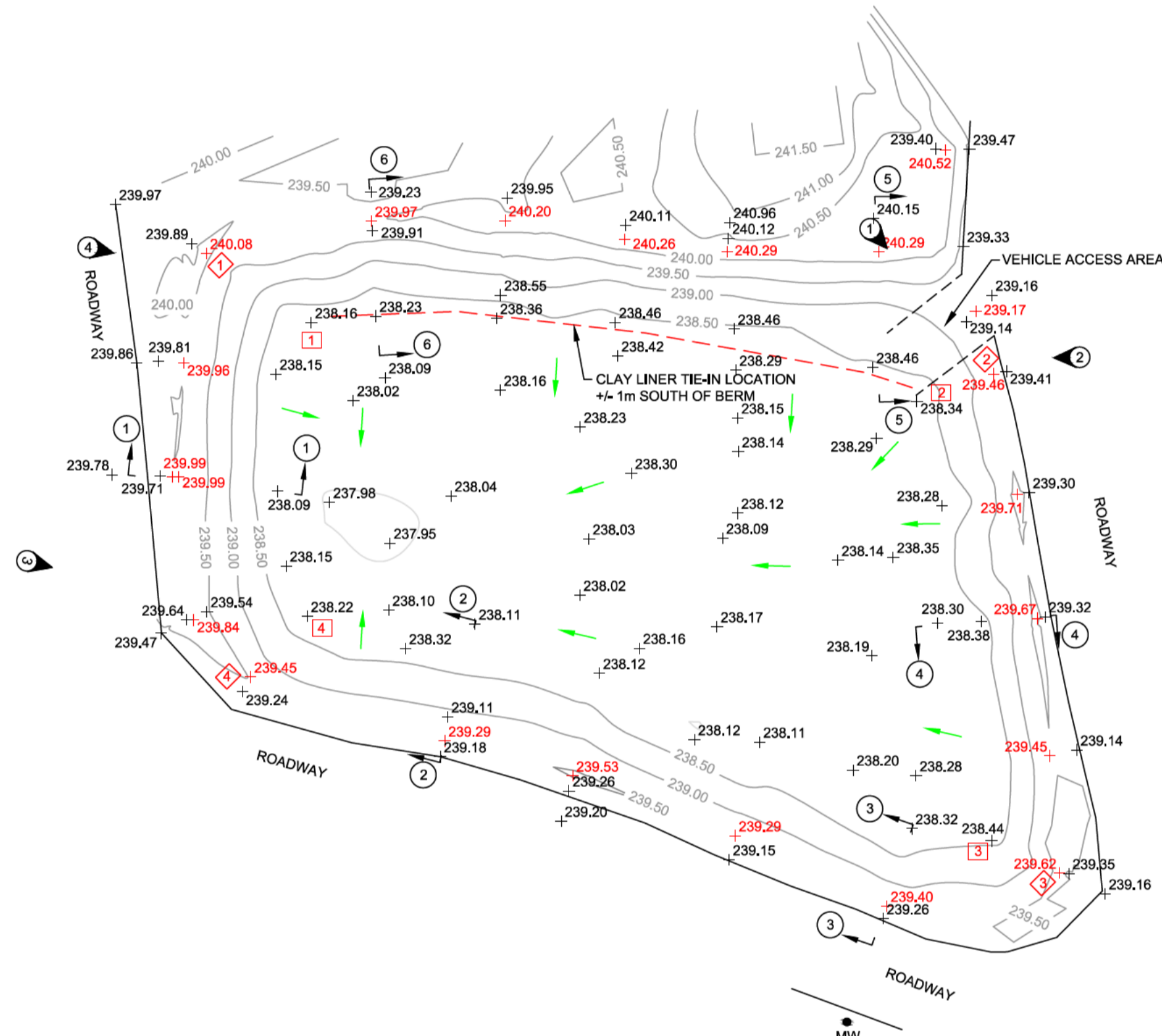




SOUTH CELL LOCATION

CORNER NO.	NORTHING	EASTING	ELEVATION
1	5449676.5	619991.2	238.16
2	5449670.2	620040.0	238.34
3	5449634.8	620046.0	238.44
4	5449652.9	619960.9	238.22
1	5449682.1	619982.8	240.08
2	5449672.4	620046.2	239.46
3	5449632.2	620051.5	239.62
4	5449648.0	619986.4	239.45



- LEGEND**
- + 238.11 SPOT ELEVATION
 - + 239.71 TOP OF BERM ELEVATION
 - DRAINAGE DIRECTION
 - ② PHOTOGRAPH AND DIRECTION
 - MW RELOCATED MONITORING WELL
 - ① APPROXIMATE LOCATION OF CORNER OF SOUTH CELL
 - ◇ APPROXIMATE LOCATION OF CORNER OF TOP OF BERM

- NOTES**
- ENG-TECH SURVEYED PROPERTY ON DECEMBER 20, 2022 USING GPS SURVEY EQUIPMENT.
 - ALL DISTANCES AND ELEVATIONS ARE IN METERS.
 - EXISTING LOCAL BENCHMARK SURVEYED: NORTHING = 5449757.53 m, EASTING = 620319.97 m, ELEVATION = 240.76 m, REPORTED ELEVATION = 240.74 m.



PHOTOGRAPH 1: FACING SOUTHEAST, SHOWING EAST BERM AND VEHICLE ENTRANCE



PHOTOGRAPH 2: FACING WEST, SHOWING NORTH BERM AND VEHICLE ENTRANCE



PHOTOGRAPH 3: FACING EAST, SHOWING SOUTH AND WEST BERM

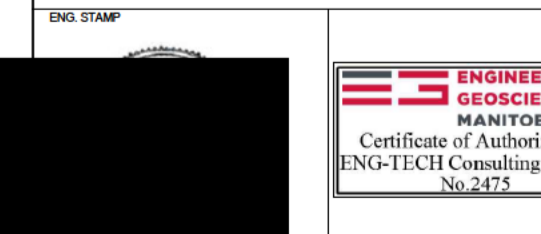


PHOTOGRAPH 4: FACING EAST, SHOWING NORTH AND WEST BERM

NO.	DATE	ISSUE / REVISION
0	Dec 2022	As-Constructed



420 Turenne Street
Winnipeg, MB R2J 3W8
Phone: (204) 233-1694 eng_tech@mts.net
Fax: (204) 235-1579 www.eng-tech.ca



CLIENT: MILLER ENVIRONMENTAL CORPORATION
PROJECT: PROCESSING AREA SOUTH EXTENSION - MILLER ENVIRONMENTAL CORPORATION FACILITY, ST. JEAN BAPTISTE, MANITOBA
DRAWING DESCRIPTION: SOUTH CELL AS-BUILT DETAILS

SCALE:	DATE:
1:400	DECEMBER 2022
DRAWN BY: ALH	CLIENT DWG NO.:
FILE NO: 22-142-02	
ENG-TECH DWG NO.:	REV.:
1 of 1	