

Chapter 4: Information Sharing and Engagement

4. INFORMATION SHARING AND ENGAGEMENT	5
4.1. COMMUNICATION PLAN	6
4.2. COMMUNITY SUMMARY REPORT OF COMMUNICATIONS.....	11
4.2.1. Open Letters of Invitation	13
4.2.2. Communications Template	13
4.2.3. Identification of how the proponent will establish an on-going communication program through annual plans and other processes.	15
4.3. COMMUNITY-SPECIFIC SUMMARIES OF COMMUNICATIONS.....	16
4.3.1. Pine Creek First Nation	16
4.3.1.1 Summary of Letters to PCFN.....	21
4.3.1.2 Summary of Meetings and Presentations at PCFN	21
4.3.2. Wuskwi Sipihk First Nation	23
4.3.2.1 Summary of Letters to WSFN.....	26
4.3.2.2 Summary of Meetings and Presentations at WSFN	27
4.3.3. Sapotaweyak Cree Nation	29
4.3.3.1 Summary of Letters to SCN.....	30
4.3.3.2 Summary of Meetings and Presentations at SCN.....	31
4.3.4. Manitoba Metis Federation	32
4.3.4.1 Summary of Letters to MMF.....	34
4.3.4.2 Summary of Meetings with MMF.....	34
4.3.5. Metis Rights Coalition	35
4.3.5.1 Summary of Letters to MRC	39
4.3.5.2 Summary of Meetings and Presentations at MRC	39
4.3.6. Tootinaowaziibeeng Treaty Reserve (TTR)	40
4.3.6.1 Summary of Letters to TTR.....	41
4.3.6.2 Summary of Meetings and Presentations at TTR.....	42
4.3.7. Barrows Community Council.....	43
4.3.7.1 Summary of Letters to Barrows Community Council	44
4.3.7.2 Summary of Meetings and Presentations at Barrows Community Council.....	44
4.3.8. Treaty 2 Collective	45
4.3.8.1 Summary of Letters to Treaty 2 Collective.....	46
4.3.8.2 Summary of Meetings and Presentations at Treaty 2 Collective	47
4.3.9. Duck Bay.....	48
4.3.9.1 Summary of Letters to Duck Bay	50
4.3.9.2 Summary of Meetings and Presentations at Duck Bay	51
4.3.10. Opaskwayak Cree Nation	52
4.3.10.1 Summary of Letters to Opaskwayak Cree Nation	53
4.3.10.2 Summary of Meetings and Presentations at Opaskwayak Cree Nation.....	54
4.4. COMMUNITIES WITH NO CONCERNS.....	55
4.5. COMMUNITIES WHO DID NOT MEET	55
4.6. STAKEHOLDER ADVISORY COMMITTEE - SUMMARY REPORT OF COMMUNICATIONS.....	56

4.6.1. Stakeholder Advisory Committee meetings	58
4.6.2. Stakeholders Values Survey	62
4.6.3. Stakeholder Input on Forest Management Objectives.....	65
4.6.4. Research on the Stakeholders Advisory Committee	65
4.7. PUBLIC INFORMATION SHARING AND ENGAGEMENT.....	68
4.7.1. Open Houses	68
4.7.2. Public Values	69
4.7.3. Moose.....	69
4.7.4. Public Involvement in Forest Management	70
4.7.5. Company Characteristics.....	71
4.7.6. Value Types Categorized.....	72
4.7.7. Recreational Activities.....	73
4.8. CHANGES AND IMPROVEMENTS FROM ALL SOURCES OF INPUT.....	74
4.8.1. Landscape-level Broad Changes	74
4.8.1.1 Moose Habitat and Use	74
4.8.1.2 Roads and Access	74
4.8.1.3 Natural Range of Variation and Seral Stages.....	75
4.8.1.4 Water Quantity and Watersheds.....	76
4.8.1.5 Patch Size and Fragmentation.....	76
4.8.1.6 Forest Cover Group.....	76
4.8.1.7 Species at Risk and birds	77
4.8.1.8 Marten.....	77
4.8.1.9 Wildlife Habitat in General	77
4.8.1.10 Wildlife Populations	77
4.8.1.11 Economic.....	78
4.8.2. Operational-level specific changes	79
4.8.2.1 Connectivity	79
4.8.2.2 Water Quality	79
4.8.2.3 Recreation and Trails	79
4.8.2.4 Aesthetics Changes.....	79
4.8.2.5 Soil.....	80
4.9. CONCLUSIONS	80
4.10. LITERATURE CITED	82
4.11. APPENDICES	83

APPENDIX 1. FMP LETTERS SENT TO ALL COMMUNITIES

APPENDIX 2. VALUES SURVEY QUESTIONNAIRE AND RESULTS

List of Tables

Table 4.1	Overview template by Community.	14
Table 4.2	Concerns and Responses template by Community.	15
Table 4.3.	Pine Creek First Nation Summary of Information Sharing and Engagement	17
Table 4.4	Pine Creek First Nation Concerns and Responses.	18
Table 4.5	Wuskwi Sipiik First Nation Summary of Information Sharing and Engagement	23
Table 4.6	Wuskwi Sipiik First Nation Cree Nation Concerns and Responses.	24
Table 4.7	Sapotaweyak Cree Nation Summary of Information Sharing and Engagement	29
Table 4.8	Sapotaweyak Cree Nation Concerns and Responses.	30
Table 4.9	Manitoba Metis Federation Summary of Information Sharing and Engagement	33
Table 4.10	Manitoba Metis Federation Concerns and Responses.	34
Table 4.11	Metis Rights Coalition Summary of Information Sharing and Engagement	36
Table 4.12	Metis Rights Coalition Concerns and Responses.	37
Table 4.13	TTR Summary of Information Sharing and Engagement	40
Table 4.14	TTR Concerns and Responses.	41
Table 4.15	Barrows Community Council Summary of Information Sharing and Engagement	43
Table 4.16	Barrows Community Council Concerns and Responses.	44
Table 4.17	Treaty 2 Collective Summary of Information Sharing and Engagement	45
Table 4.18	Treaty 2 Collective Concerns and Responses.	46
Table 4.19	Duck Bay Summary of Information Sharing and Engagement	49
Table 4.20	Duck Bay Concerns and Responses.	50
Table 4.21	Opaskwayak Cree Nation Summary of Information Sharing and Engagement	52
Table 4.22	Opaskwayak Cree Nation Concerns and Responses.	53
Table 4.23	Stakeholder Advisory Committee meeting dates and FMP topics	58
Table 4.24	Summarized results from stakeholder surveys in Feb. 2018.	63
Table 4.25	Summarized value types and values from survey.	72
Table 4.26	Top recreational activities.	73

List of Figures

Figure 4.1	First Nation and Treaty Areas in Manitoba https://www.aadnc-aandc.gc.ca/eng/1100100020576/1100100020578 [accessed Sept. 18, 2019].	12
Figure 4.2	Open house advertising for public input.	68
Figure 4.3	Survey responses (out of 196) regarding the role of the public in setting management goals and priorities.	70
Figure 4.4	Characteristics that stakeholders felt that LP should display as a company. Numbers associated with each column represent the number of respondents (out of 196) who felt that a given priority was important.	71

4. INFORMATION SHARING AND ENGAGEMENT

Chapter 4 of this Forest Management Plan provides an overview and describes the 'Information Sharing and Engagement' efforts for the development of this 20-year Forest Management Plan (2020 – 2040). This chapter includes:

- a description of the engagement process (*i.e.* Communication Plan);
- summary of engagement with each community;
- topics and summary of discussion with each community;
- Forest Management Plan specific comments and concerns;
- Non-Forest Management Plan comments and concerns shared during engagement
- Stakeholders Advisory Committee (SAC) information sharing and engagement;
- Public information sharing and engagement;
- how information received by all sources was considered in the development of the Forest Management Plan.

Information sharing includes providing multiple opportunities to share information, which ideally is a two-way exchange of information. Furthermore, information sharing can lead towards discussion on other topics of interest. Information sharing includes:

- Letters – summarizing information and the opportunity to exchange information
- Phone calls
- emails
- Verbal responses to inquiries
- answering questions
- providing maps
- providing documents, reports *etc.*
- presentations on areas of community interest
- providing guidelines
- traditional knowledge
- local knowledge
- spatially-specific knowledge (the location of something)
- sharing of values

The level of engagement depends on each individual community. The community may choose to engage with the FML #3 licence holder regarding aspects of the Forest Management Plan or choose not to engage at all, however the opportunity was provided, and the choice is up to each community.

An example of potential engagement is providing input into an aspect of forest management. This input could be included in the forest management planning. Later, additional engagement could be specific and guide planning, modeling, and decision-making.

4.1. COMMUNICATION PLAN

Revised: August 2018

Introduction

Forest Management Licence #3 allows Louisiana-Pacific Canada Ltd., Spruce Products Ltd., and Quota Holders to harvest wood, subject to license conditions. One licence requirement is the development of a Forest Management Plan.

The 20-Year Forest Management Plan (FMP) will provide strategic guidance for future Operating Plans. The new plan will chart the path of forest management in the Duck Mountains and surrounding areas from 2020 until 2039. This is an opportunity to incorporate traditional and local knowledge and values into plan development. We would like to incorporate values and land use community-specific information in the planning, modeling, and decision-making processes.

Engagement and information sharing with Indigenous communities and stakeholders is very important to LP Swan Valley. It should be noted that LP Swan Valley continually engages and shares information with both Indigenous communities and local stakeholders and plans to continue doing so after approval of the 20-year plan. LP Swan Valley will continue to have regular meetings with Indigenous communities, the Stakeholder Advisory Committee (SAC) and will hold public open houses, in addition to FMP specific meetings. We recognize that information sharing is vital for LP Swan Valley to maintain its social license to operate.

A list of the Indigenous communities, non-government organizations, stakeholders, advisory groups, associations, and other interested individuals that the proponent intends to contact

Indigenous Communities

With assistance from the Province, LP has selected the Indigenous communities shown in Table 1 to engage on the long-term Forest Management Plan (FMP). Indigenous communities were ranked into two groups of FMP Engagement. Note that LP will be open to meeting with all selected Indigenous communities to provide information on the FMP.

Communication Plan

LP will mail an initial FMP Engagement letter to all selected Indigenous communities by January 31, 2018. Follow-up phone calls and/or emails will be made to all selected communities to ensure that the FMP Engagement letter was received. The FMP Engagement letter will communicate that development of a new long-term Forest Management Plan (FMP) will soon be underway and speak to the opportunity for selected communities to participate in its development. In October 2018, LP will mail a second letter to all selected communities that have not responded or shown interest in participating in an FMP engagement process. The letter will identify that work on the plan, particularly modeling forest management scenarios, is moving forward. The letter will also identify that there will still be a future opportunity for selected communities to provide input for consideration in FMP development, but to a reduced extent. From this point forward, engagement efforts will focus primarily on selected communities who have expressed interest in being involved in FMP development.

LP intends to follow-up with communities (i.e. phone calls, emails, drop-in at office) to arrange introductory meetings with Chief and Council, land managers, elected officials and/or leaders, to further explain the opportunity to participate in FMP development. Communities will be offered the opportunity to participate in meetings where community members can provide input for consideration in the development of the FMP. LP will work with Chief and Council, land managers, elected officials and/or leaders to discuss ideas and options for the community to participate in an FMP Engagement process.

TABLE 1: List of Indigenous and Northern communities

INDIGENOUS AND NORTHERN COMMUNITIES	
Tootinaowaziibeeng (TTR) First Nation	Pine Creek First Nation
Sapotaweyak Cree Nation	Metis Rights Coalition (MRC)
Wuskwi Sipiik First Nation	Manitoba Metis Federation (MMF)
Dauphin River First Nation	Spence Lake Community Council
Sandy Bay First Nation	Ebb & Flow First Nation (Treaty-2 Collective)
Rolling River First Nation	Keeseekoowenin First Nation (Treaty-2 Collective)
Waywayseecappo First Nation	Lake Manitoba First Nation (Treaty-2 Collective)
Opaskwayak Cree Nation (OCN)	Little Saskatchewan First Nation (Treaty-2 Collective)
Red Deer Lake Community Council	O-Chi-Chik-Ko-Sipi First Nation (Treaty-2 Collective)
Camperville Community Council	Pinaymootang First Nation (Treaty-2 Collective)
Duck Bay Community Council	Skownan First Nation (Treaty-2 Collective)
Crane River Community Council	Baden Community Council (Barrows Group)
Pelican Rapids Community Council	Barrows Community Council (Barrows Group)
Mallard Community Council	Dawson Bay Community Council (Barrows Group)
Meadow Portage Community Council	National Mills Community Council (Barrows Group)
Rock Ridge Community Council	Powell Community Council (Barrows Group)
Pelican Rapids Community Council	Treaty Two Collective

Stakeholders, Conservation Groups, Non-Government Organizations, Advisory Groups, Associations & Interested Individuals

LP has had a Stakeholders Advisory Committee (SAC) since 1994, which has included conservation groups, non-government organizations, advisory groups, associations and interested parties. The SAC has been actively involved in the operating plan and FMP process since its establishment. The SAC membership has evolved over the years with some organizations no longer showing interest in being included and new organizations being added.

Below is a list of the current SAC membership:

- Duck Mountain Trappers Association
- Sustainable Development
- Swan Lake Watershed Conservation District
- Ducks Unlimited Canada
- Swan Valley Snowmobile Association
- Midwest Lodge and Outfitters
- Cottage Owners Association
- Environmental Assessment and Licensing Branch
- West Region Elk Management Board
- Manitoba Agriculture
- Mountain Forest Section Renewal Company
- Swan Valley Regional Secondary School
- Mixed Wood Forest Society
- Intermountain Conservation District
- Swan Valley Sport Fishing Enhancement
- Mountain Quota Holders Association
- Nepinak Resource Consulting
- Additional members or guests as requested

The SAC committee meets at least three, preferably four, times each year to go over current issues, harvest updates, operating plans and the FMP.

LP also holds open houses every year to review operating plans. Open houses are held in four communities: Roblin, Grandview, Ethelbert and Swan River. These meetings are usually held in late January or early February. Comments from locals are recorded and mitigated if possible. LP plans to present the draft FMP, with the information available at the time, during a separate FMP set of open houses in late 2019. LP will look at presenting in at least these four communities. Additional communities may also be added to the open house schedule if feasible.

Information Exchange Strategy

LP is pursuing engagement that will facilitate the sharing of information regarding interests, concerns, objectives and values to help inform development of the FMP. Therefore, LP must be prepared to speak about a full spectrum of potential forestry related questions and about our business.

LP will have available the following resources for presentation and discussion purposes:

- Operating Plans (showing planned and projected cut blocks and access in FML 3)
- Annual Reports (previous forest management activities in FML 3)
- Wall size Operating Plan maps and a FML 3 license area map
- Manitoba Forestry Legislation, Regulations and Guidelines
- LP Swan Valley's Standard Operating Guidelines
- A powerpoint presentation on forest management in Manitoba
- Monitoring information such as: regen survey summaries, songbird survey results and stream crossing checklist information

As mentioned above, the engagement process will be customized as much as possible to suit the interests and depth of information desired by each Indigenous community and Stakeholder. LP will also be open to discussing non FMP related topics during engagement, such as economic development opportunities, arranging mill tours and partnership opportunities.

Engagement Reporting

A monthly update and communication log (“Record of Communication”) summarizing Indigenous engagement efforts will be provided to Forestry & Peatlands branch, Manitoba Sustainable Development. More frequent updates can also be provided if requested.

LP will provide a final report (Chapter 4 of the FMP) to summarize information received from each Indigenous community and a record of engagement efforts relating to the FMP.

Information shared during engagement will be reviewed and analyzed for potential inclusion in the FMP modeling process. The goal of modeling will be to generate two or three sustainable forest management scenarios. Feedback on the forest management scenarios from Indigenous communities and Stakeholders will be recorded and used in the selection of a *Preferred Management Scenario (PMS)* for the FMP, which will attempt to incorporate Indigenous community and Stakeholder knowledge, values and objectives into the development of the FMP.

Steps and Timelines

PHASE 1: January 2018 to October 2018

LP will send letters to Indigenous communities identified in Table 1 by January 2018. The letter will inform selected communities of the FMP and the opportunity to participate in a process that will allow for sharing their interests, concerns, and values for consideration in FMP Development. LP will meet with any communities that express interest to explain the FMP process in more detail and answer questions related to LP’s plans. This phase will be an introduction to LP and how Indigenous communities can assist with FMP development. LP will also be prepared to share maps and other information via email or mail should a community not want to meet but still wish to be informed of the plan.

A phone call, email, and/or personal visit will follow mailing of the initial letter to determine if the letter was received and to set-up an initial meeting.

A second letter will be sent in October 2018 to all selected communities that have not responded with interest in participating in an FMP Engagement process. If no response is received at this point, these communities will not be actively pursued further for engagement in the FMP development process. LP will still be available to meet with any interested Indigenous communities at a future date. However, after approximately October 2018, scenario modelling will have begun, and some decision making will be completed.

PHASE 2: October 2018 to November 30, 2018

During this time, LP will continue to arrange/ attend meetings with interested Indigenous communities. Meetings that occur after Phase 2 has begun will allow for providing scenario-modeling information on future forest conditions to the community for review. LP will continue to provide FMP information as stated in the information sharing section and will work to obtain community feedback for how to improve the forest management scenarios.

LP also plans to be available for further FMP information sharing during Manitoba’s Crown consultation process to provide information on the FMP, answer questions, and continue strengthening our relationship with our nearby Indigenous communities. However, LP does not want to be at the table while government to government conversations are taking place and will excuse ourselves from that part of the meeting.

LP will continue to be available after submission of the FMP to meet with Indigenous communities as requested. The engagement process for LP is enduring and will continue after the FMP has been approved.

The location and general timing of proposed engagement meetings

LP will be flexible and available to meet with selected Indigenous communities and Stakeholder groups at their convenience. LP will begin by trying to arrange preliminary meetings with Indigenous community leadership and Stakeholder groups to further explain the FMP development process and to discuss ideas for involving the community and larger audiences in FMP development. LP will provide regular updates on engagement to the Province and will seek guidance as needed.

4.2. COMMUNITY SUMMARY REPORT OF COMMUNICATIONS

Thirty-four Indigenous communities, community councils, coalitions, and federations (Figure 4.1) were contacted through letters, phone calls, emails, meetings, and tours. Note that Consultation with Indigenous and Northern Communities is a duty of the Crown and is a separate and independent from the engagement regarding the FML #3 Forest Management Plan.

The Indigenous community information sharing, and engagement logs contain records of many phone calls, e-mails, texts, meetings, drop-ins, trade show attendance, and mill tours. These community logs were too large to include in their entirety. Therefore, communication records were summarized in a communications template.

Economic Opportunities

The concept of economic opportunities was often communicated during engagement meetings and discussions. LP is interested in mutually beneficial partnerships and business opportunities with Indigenous communities. LP is interested in purchasing aspen timber from private and community lands. Also, if a community wishes to harvest hardwood themselves, either from private, community or crown land, LP would be interested in contracting.

A second business option that has been offered is seasonal forestry work that LP Forest Resources Division does each year. Forest regeneration surveys are the most likely option for forestry work, since this is much less capital-intensive than mechanical logging. LP has helped train Indigenous persons to obtain the required 'Regeneration Surveyor' certification from the province of Manitoba. Once certified, regeneration survey contract work could begin.

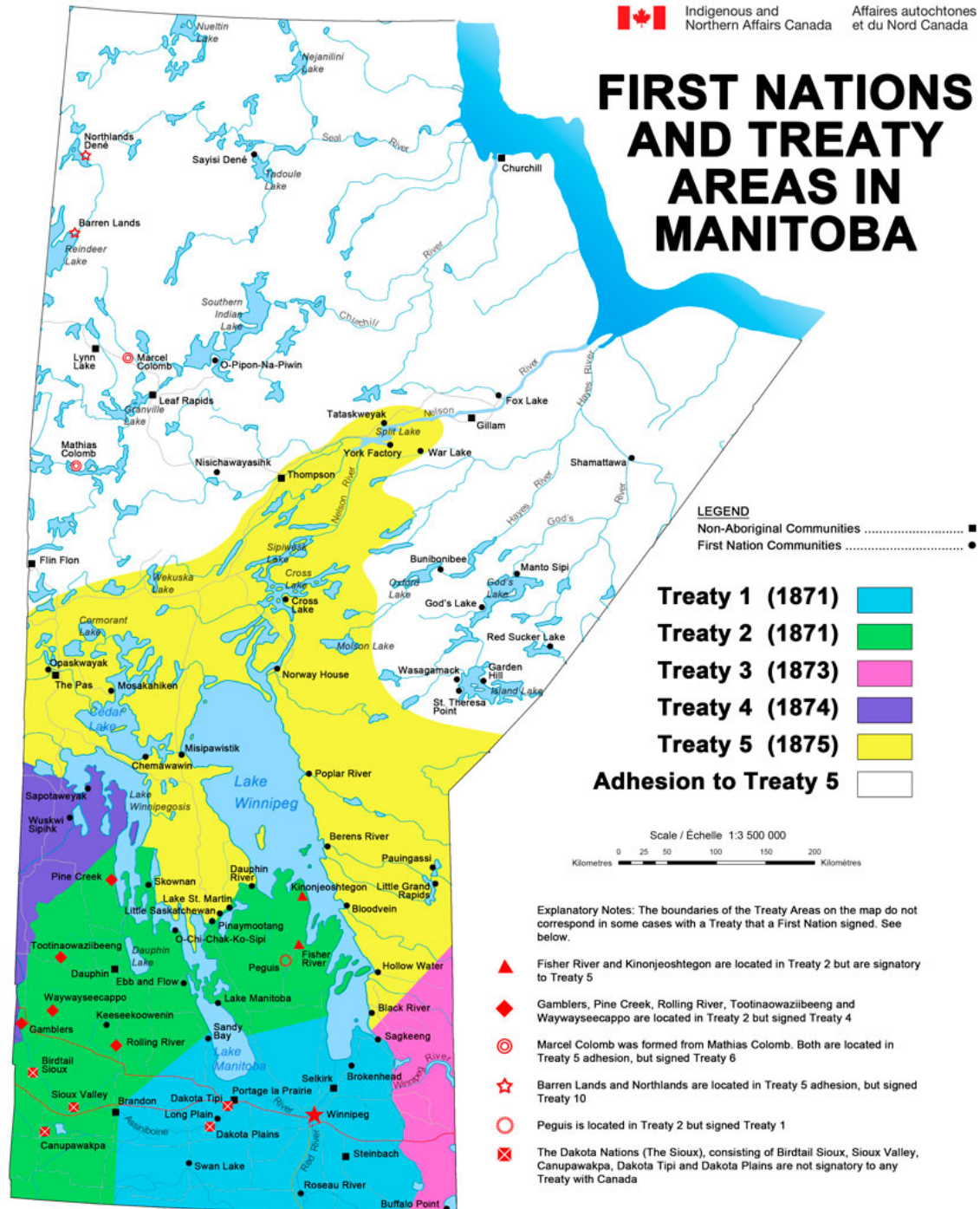
Another economic opportunity explored was one community wanted access to softwood saw logs, to mill their own lumber. The lumber would be used to construct new homes on reserve. LP offered to work with the community and plan blocks with softwood saw logs to meet their needs.

Job Opportunities

Job opportunities are for individuals, while economic opportunities are for businesses or communities. LP staff, including the Area Forest Manager and Human Resources Manager have regularly provided information on the types of work opportunities available within the LP Mill Facility and the application process. They also provided a connection to the Elbert Chartrand Friendship Center which can provide assistance, resources and skills upgrading.

Tree planting jobs have been regularly inquired about during engagement meetings and discussions. The Mountain Forest Section Renewal Company (a subsidiary of Spruce Products Ltd.) coordinates the seasonal tree plant effort in FML #3. Tree planting is contracted out, typically to Outland reforestation, who train and hire local individuals during the annual tree plant during the months of June and July. Contact information for the hiring team for Outland Reforestation has been shared when requested.

FIRST NATIONS AND TREATY AREAS IN MANITOBA



For information regarding reproduction rights, please contact Indigenous and Northern Affairs Canada at: CommunicationsPublications@aadnc-aandc.gc.ca
 www.canada.ca/indigenous-northern-affairs
 1-800-567-9604
 TTY only 1-866-563-0554

QS-N056-011-EE-A1
 Catalogue: R32-270/2017E-PDF
 ISBN: 978-0-660-09066-5

© Her Majesty the Queen in Right of Canada, represented by the Minister of Indigenous and Northern Affairs, 2017. This Publication is also available in French under the title Régions visées par des traités et emplacement des Premières Nations au Manitoba. This map is for informational purposes only. Markers and boundaries indicated are approximate and may be subject to revision.

Figure 4.1 First Nation and Treaty Areas in Manitoba <https://www.aadnc-aandc.gc.ca/eng/1100100020576/1100100020578> [accessed Sept. 18, 2019].

4.2.1. *Open Letters of Invitation*

Notification letters about the Forest Management Plan (FMP) were sent to all Indigenous and Northern communities identified in the communication plan.

FMP Letter #1 - Jan. 31, 2018. FMP invitation to participate (Appendix 1).

FMP Letter #2 - October 31, 2018. FMP update and notice of the start of phase 2 information sharing and engagement (Appendix 2).

FMP letter #3 – June 21, 2019. Baseline Forest Management Scenario completed (Appendix 3).

4.2.2. *Communications Template*

A template of two tables (Table 4.1 and

Table 4.2) was created and revised to help summarize the information sharing and engagement records for each community. The FMP guidelines (Manitoba Conservation 2007) section 5.2 was utilized to ensure completeness.

Table 4.1 Overview template by Community.

Requirement	Details	Response
Description of the communication processes and activities	An overview of the planned communication processes and activities are described in section 4.1 Communication Plan.	Letters – Phone calls – Emails – Meetings – Tours –
Description of when and how the communication occurred	Detailed in sub-sections below this table: Summary of Letters (by community) Summary of Meetings and Presentations (by community)	
Document what was presented	FMP Letter #1 - FMP invitation to participate FMP Letter #2 - FMP update and notice of the start of phase 2 FMP Letter #3 – June 21, 2019. Baseline Forest Management Scenario completed	
Met with personnel (by job title)	e.g. Chief, Council, Legal Council	

Table 4.2 Concerns and Responses template by Community.

What we heard	How it influenced FMP, summary of response	Relevant Chapter or section
concern #1 e.g. Economic Development		n/a
concern #2		n/a
concern #3		n/a
FMP Concern #1 e.g. moose populations	e.g. Moose models being used to enhance moose habitat via spatially arranging your forest strategically adjacent cover and water while minimizing new road construction.	Ch. 5 Scenario Planning Section 5.7 Moose Emphasis Scenario
FMP Concern #2		
FMP Concern #3		

4.2.3. Identification of how the proponent will establish an on-going communication program through annual plans and other processes.

Operating Plans are submitted every two years. The Province of Manitoba consults government-to-government with Indigenous communities regarding Operating Plans. The FML holder is available to discuss Operating Plan details.

Open houses are held to allow input on the Operating Plans by anyone who is interested. Even though Operating Plans are submitted every two years, open houses are held every year, to increase the opportunity for input.

4.3. COMMUNITY-SPECIFIC SUMMARIES OF COMMUNICATIONS

A summary of communications (*i.e.* phone calls, meetings, e-mails *etc.*) was created for each community.

4.3.1. Pine Creek First Nation



The original members of Pine Creek First Nation were of Saulteaux descent and came from the Ontario Lake Superior area of Sault Ste. Marie. The name “Saulteaux” is derived from the French language meaning “people of the rapids”; they are also formally recognized as Plains Ojibwe or Anishinaabe.

Pine Creek First Nation made their home along the southwestern shore of Lake Winnipegosis. Pine Creek is situated between the communities of Camperville and Duck Bay, approximately 110 kilometers north of Dauphin, Manitoba.

Pine Creek First Nation is geographically located in Treaty #2 but is signatory to Treaty #4. The treaty was constituted on September 14, 1874, comprising of 13 separate Saulteaux and Cree Nations, with additional Nations signing thereafter. Treaty #4 signatories cover most of Southern Saskatchewan and partial areas of

southern Alberta and western Manitoba. Pine Creek First Nation is affiliated with the West Region Tribal Council.

Table 4.3. Pine Creek First Nation Summary of Information Sharing and Engagement

Requirement	Details	Response
Description of the communication processes and activities	An overview of the planned communication processes and activities are described in section 4.1 Communication Plan.	Letters – 7 Phone calls – 18 Emails – 34 Meetings – 8 Tours – 1 Met at LP siding mill, followed by a mill tour - July 18 th , 2018
Description of when and how the communication occurred	Detailed in sub-sections below this table: Summary of Letters to Pine Creek Summary of Meetings and Presentations at PCFN	Section 4.3.1.1 Section 4.3.1.2
Document what was presented	FMP Letter #1 - FMP invitation to participate FMP Letter #2 - FMP update and notice of the start of phase 2 FMP Letter #3 – in progress Operating Plan letter informing community of LP's winter harvest (2018-2019) plans. <u>Presentations:</u> Natural Range of Variation (NRV) Road decommissioning summary table Artifacts and Cultural Heritage Resources Moose habitat model outputs Watersheds located in FML 3 Jobs available at LP Mill Facility	
Met with personnel (by job title)	Chief Council Legal Council Elders Employment and Human Resources Policy Analyst	

Discussions of how Pine Creek First Nations concerns have been addressed in the Forest Management Plan are summarized in Table 4.4.

Table 4.4 Pine Creek First Nation Concerns and Responses.

What we heard	How it influenced FMP, summary of response	Relevant Chapter or sections
Requested a siding mill tour in June 2018	A mill tour was held July 18 th , 2018.	
Employment and Work Opportunities	Mill positions Pre-Harvest Survey positions Contract Logging Contract tree planting	
Economic Development	Contract logging opportunities.	
Mill Facility concerns April 30 th and August 20 th , 2019	Emission and ground water monitoring regulatory requirements. Explained air and water quality monitoring requirements for the mills Environment Act License.	
Questions around how Stumpage Dues are paid to the Crown April 30 th , 2019 meeting	Supplied information on Manitoba stumpage with website links and explained how stumpage rates are adjusted monthly based on the previous months market price.	
FMP Concern Moose Populations. April 30 th , 2019 – Concern that the moose population decline began with LP commencing operations	Decline in moose population in Swan Pelican area (no forestry or roads) coincided with Duck Mountain moose decline. Furthermore, the moose population decline in the Swan-pelican forest (with no harvesting) was much more severe than the Duck or Porcupine Mountains that have harvesting.	Ch. 3 section 3.1.10.2 Moose Ch. 5 section 5.6.4.3 and 5.7.4.3. winter moose habitat Ch. 5 section 5.6.4.4. and 5.7.4.4. summer moose habitat

What we heard	How it influenced FMP, summary of response	Relevant Chapter or sections
<p><u>FMP Concern</u></p> <p>Moose Habitat - August 20th, 2019. Moose negatively impacted by forest operations.</p>	<p>Moose models being used to enhance moose habitat via spatially arranging young forest strategically adjacent cover and water while minimizing road construction/use.</p> <p>Moose habitat was addressed in a very significant way in the FMP.</p> <p>Moose food, cover, and mature mixed-woods were utilized to improve moose habitat within each forest management scenario.</p> <p>Future new road construction was minimized in the strategic plan to reduce access.</p> <p><u>Winter moose habitat</u> was quantified in an analysis recently commissioned by Wildlife and Fisheries Branch. LP applied the winter moose habitat relationships to the land base for each scenario. This created a tool to evaluate winter moose habitat for each scenario at time 0, 10, 20, 30, and 40 years.</p> <p><u>Summer moose habitat</u> was estimated based on previous work by the Manitoba Model forest. LP applied the summer moose habitat (food and cover) relationships to the land base for each scenario. This created a tool to evaluate summer moose habitat for each scenario at time 0, 10, 20, 30, and 40 years.</p> <p>Moose habitat retention and improvement was an important factor in choosing the 'Moose Emphasis scenario' as a guide for managing FML #3 over the next 20 years.</p>	<p>Ch. 5 Scenario Planning</p> <p>Section 5.7 Moose Emphasis Scenario</p> <p>Ch. 5 section 5.6.4.3 and 5.7.4.3. winter moose habitat</p> <p>Ch. 5 section 5.6.4.4. and 5.7.4.4. summer moose habitat</p>
<p><u>FMP Concern</u></p> <p>Forest operations impacts to Artifacts and Cultural Heritage Resources</p> <p>April 30, 2019</p>	<p>Surveyors, staff, loggers all trained to recognize artifacts and cultural heritage resources regularly. Probability screening completed during operating plan development.</p> <p>Presentation given about cultural heritage resources during August 20th, 2019 meeting in Pine Creek.</p>	<p>Operational solution, not strategic 20-Year FMP. Pre-Harvest Survey manual.</p>
<p><u>FMP Concern</u></p> <p>Natural Range of Variation (NRV)</p> <p>April 30th and August 20th, 2019</p> <p>What is NRV and why is it being used.</p>	<p>Presented NRV at meetings with Pine Creek leadership on April 30th, 2019, explaining how ranges were determined for the FML area. On August 20th, 2019 discussed NRV in further detail and showed how the ranges had been added as constraints for 200 years of simulated harvest and maintained. Shared with Pine Creek the final NRV report (2019) by Dr. David Andison.</p>	<p>Ch.5 Scenario Planning</p> <p>Section 5.8.2 Choosing Objectives (NRV is third)</p> <p>5.6.1.1 NRV explained</p>

What we heard	How it influenced FMP, summary of response	Relevant Chapter or sections
<p><u>FMP Concern</u></p> <p>Roads and Access</p> <p>April 30th and August 20th, 2019</p> <p>Roads negatively impact moose and other wildlife populations.</p>	<p>Shared road decommissioning history using the past two harvest seasons (2017/2018 and 2018/2019) as examples. Discussed road closure as something that proposed cutblock work permits normally require.</p> <p>Minimizing road construction was a target that the moose emphasis scenario utilized.</p>	<p>Ch.5 Scenario Planning</p> <p>5.5.3 Road Controls</p> <p>5.8.3.2 Roads [compared by scenario]</p> <p>5.7.3.2 moose Emphasis scenario roads</p>
<p><u>FMP Concern</u></p> <p>Forest Operations on the east side of the Duck Mountains is negatively impacting hydrology around Pine Creek.</p> <p>Email from September 23rd, 2019</p>	<p>Shared with Pine Creek Leadership the 2014 Hydrology Report (Lee 2014) that specifically reviewed the local watersheds.</p> <p>Discussed watersheds within the license area and how there are limits to how much forest can be in a harvested state within each watershed.</p> <p>Discussing and scoping a potential Sustainable Forestry Initiative joint grant to examine hydrology (started last week of Sept. 2019).</p> <p>Watershed disturbance chosen as an indicator to score forest management scenarios</p>	<p>Ch. 3 Current Forest Condition</p> <p>3.1.8 Water</p> <p>3.1.8.1 Watersheds</p> <p>Ch.5 Scenario Planning</p> <p>Sections 5.5.6; 5.6.3.3; and 5.8.3.3</p>
<p><u>FMP Concern</u></p> <p>Road density contributes to the vulnerability of wildlife</p> <p>Email from September 23rd, 2019</p>	<p>Road construction and use has been minimized at the strategic level. Operationally roads are also minimized, and access rigorously controlled.</p>	<p>Moose winter habitat model (RSF) shows all roads negative for moose. Ch.5 Scenario Planning</p> <p>5.6.4.3 Winter Moose Habitat</p>
<p><u>FMP Concern</u></p> <p>Forest management practices that sequester carbon</p> <p>Email from September 23rd, 2019</p>	<p>Existing forest management practices keep upland carbon on site (majority of carbon is in the LFH litter layer and the upper A horizon of soil). Carbon in wood is a very small percentage of upland ecosystem carbon.</p> <p>Forest management practices also keep wetland carbon in place, due to environmentally friendly wetland crossings that maintain hydrologic flow.</p>	<p>Ch. 3 Current Forest Condition</p> <p>3.1.2.4 Carbon</p> <p>3.1.4 Soils</p> <p>Ducks Unlimited Canada wetland crossing guide</p>

4.3.1.1 Summary of Letters to PCFN

Summaries of letters to or from Pine Creek First Nation (PCFN) are summarized and outlined in this section.

February 28, 2019 emailed letter from PCFN

- Duck Mountain 20 Year Forest Management Plan

July 9, 2019 letter from PCFN

- Long-term relationship

July 17, 2019 letter from PCFN

- Product donations and building plan

July 30, 2019 letter to PCFN

- Product donations
- Economic opportunities
- Natural Range of Variation (fire) slides
- Artifacts/travel routes
- Moose

Sept. 2019 letter to PCFN

- Economic opportunities
- Product Donation
- Moose
- Operation of the Siding Mill
- water quality and quantity

4.3.1.2 Summary of Meetings and Presentations at PCFN

Meeting November 21st, 2017

The November 21st meeting in Pine Creek, attended by Chief and Council from PCFN and the Area Forest Manager and Operations Planner from LP. This was mostly an introductory meeting between the newly elected Chief and newly hired Area Forest Manager. Topics discussed were mostly based around economic opportunities, but some discussion did occur regarding the upcoming forest management plan. This discussion was mostly around what a forest management plan is compared to an Operating Plan.

Meeting May 16th, 2018

The May 16th meeting occurred in Pine Creek with LP and Sustainable Development staff. Topics discussed were forest management plans, both operating plans and 20 years plans and their respective purposes. Also discussed was night hunting and moose management.

Meeting July 11th, 2018

This meeting occurred at the LP Minitonas mill facility and started off with a mill tour. Discussion after the tour was mostly about potential mill jobs and product donations with LP's Mill Manager. LP's Human Resources Manager was introduced to PCFN attendees and the hiring process and onboarding schedule was explained. An update on the development status of the

forest management plan was shared. The work to date on the plan has been mostly on summarizing past forest operations and current forest condition but the planning team is in the process of adding objectives and targets for the desired future forest condition. A meeting in Pine Creek was requested specific to the forest management plan as a follow up.

Meeting April 30th, 2019

Agenda:

- Forest Management Plan – what it is and why it is required
- Operating Plan – what it entails
- Natural Range of Variation
- Forest Age distribution of Forest Management License #3
- Moose
- Business and Employment Opportunities

Meeting Aug 20th, 2019

Agenda:

- Product Donations
- Economic Opportunities
- Natural Range of Variation
- Artifacts and Travel Routes
- Moose

Meeting Nov. 18th, 2019

Meeting in Swan River with Sustainable Development staff and Pine Creek focused primarily on economic opportunities. LP Human Resources Manager attended and discussed mill positions, hiring process and resources available to assist.

4.3.2. Wuskwi Sipiik First Nation



Wuskwi Sipiik First Nation is located west of Swan Lake. They are part of the Swampy Cree Tribal Council. Summaries of information sharing and engagement (Table 4.5) as well as community concerns are responses (Table 4.6) are displayed.

Table 4.5 Wuskwi Sipiik First Nation Summary of Information Sharing and Engagement

Requirement	Details	Response
Description of the communication processes and activities	An overview of the planned communication processes and activities are described in section 4.1 Communication Plan.	Letters – 4 Phone calls – 11 Emails – 127 Meetings – 9 Tours – 0
Description of when and how the communication occurred	Detailed in sub-sections below this table: Summary of Letters to Wuskwi Sipiik First Nation Summary of Meetings and Presentations at Wuskwi Sipiik First Nation	
Document what was presented	FMP Letter #1 - FMP invitation to participate FMP Letter #2 - FMP update and notice of the start of phase 2 FMP Letter #3 – Baseline forest management scenario available for review Operating Plan letter informing community of LP's winter harvest (2018-2019) plans.	
Met with personnel (by job title)	Lands Manager Chief Councillor Planner Band Office Manger TLE Manager Legal Council Elders Employment and Human Resources Policy Analyst	

Table 4.6 Wuskwi Sipiik First Nation Cree Nation Concerns and Responses.

What we heard	How it influenced FMP, summary of response	Relevant Chapter or sections
		n/a
WSFN requested involvement in logging supervision. October 17, 2017 email.	LP provided logging supervision training to band member interested in working in Natural resource development.	n/a
		n/a
Discussion and questions around upcoming harvest season blocks at July 9, 2018 meeting.	Reviewed operating plan map and discussed primarily access and timing of harvest blocks.	n/a
Asked about harvest plans for the east side of Swan Lake. July 9, 2018 meeting.		n/a
Tree planting [job] opportunities, requested at July 9, 2018 meeting.		n/a
Request to be provided with a copy of Pre-	Emailed a copy of LP and Mountain Quota holders Pre-Harvest survey manual.	n/a

What we heard	How it influenced FMP, summary of response	Relevant Chapter or sections
Harvest survey manual. October 20, 2019		
<p><u>FMP Concern</u></p> <p>Water quality and Hydrology</p> <p>January 26th, 2018</p>	Discussed hydrological impacts and mitigation measures at both the strategic and operational level.	<p>Ch. 3 Current Forest Condition</p> <p>3.1.8 Water</p> <p>3.1.8.1 Watersheds</p> <p>Ch.5 Scenario Planning</p> <p>Sections 5.5.6; 5.6.3.3; and 5.8.3.3</p>
<p><u>FMP Concern</u></p> <p>Buffers</p> <p>-questions around buffers and how they were decided on</p> <p>-confusion around why some large areas were left to blow down and other areas of younger forest only a strip of timber was left.</p> <p>July 9, 2018 meeting</p>	<p>buffer guidelines from Province of Manitoba</p> <p>buffer width mitigation with Province of Manitoba's Integrated Resource Management Team</p>	n/a
<p><u>FMP Concern</u></p> <p>Moose</p> <p>WSFN's biggest concern for forest management in the Duck Mountains.</p> <p>July 9, 2018 meeting</p>	<p>Moose models being used to enhance moose habitat via spatially arranging your forest strategically adjacent cover and water while minimizing road construction/use.</p> <p>Moose habitat was addressed in a very significant way in the FMP.</p> <p>Moose food, cover, and mature mixedwoods were utilized to improve moose habitat within each forest management scenario.</p> <p>Future new road construction was minimized in the strategic plan to reduce access and potential road hunting of moose.</p> <p>Winter moose habitat was quantified in an analysis recently commissioned by Wildlife and Fisheries Branch. LP applied the winter moose habitat relationships to the land base for each scenario. This created a tool to evaluate winter moose habitat for each scenario at time 0, 10, 20, 30, and 40 years.</p> <p>Summer moose habitat was estimated based on previous work by the Manitoba Model forest. LP applied the summer moose habitat (food and cover)</p>	<p>Ch. 5 Scenario Planning</p> <p>Section 5.7 Moose Emphasis Scenario</p> <p>Ch. 5 section 5.6.4.3 and 5.7.4.3. winter moose habitat</p> <p>Ch. 5 section 5.6.4.4. and 5.7.4.4. summer moose habitat</p>

What we heard	How it influenced FMP, summary of response	Relevant Chapter or sections
	<p>relationships to the land base for each scenario. This created a tool to evaluate summer moose habitat for each scenario at time 0, 10, 20, 30, and 40 years.</p> <p>Moose habitat retention and improvement was an important factor in choosing which one of two forest management scenarios to use as a guide for managing FML #3 over the next 20 years.</p>	
<p><u>FMP Concern</u></p> <p>Access, how are roads closed? When and why?</p> <p>July 9, 2018 meeting</p>	<p>Standard Operating Guideline (SOG) – close all new road access. Existing roads dealt with operationally, in mitigation with Province of Manitoba.</p>	<p>Ch. 5 Scenario Planning</p> <p>Sections 5.5.3; 5.7.3.2; and 5.8.3.2</p> <p>Ch. 6 FMP Implementation</p> <p>Section 6.3.2</p>
<p><u>FMP Concern</u></p> <p>Bird species at Risk, what is being done?</p> <p>July 9, 2018 meeting</p>	<p>LP will continue annual bird surveys in proposed summer blocks. Often, the bird species at risk Canada Warbler is found. Other bird species at risk are rarely found.</p>	<p>Ch. 5 Scenario Planning</p> <p>Sections 5.6.4.1; 5.7.4.1; and</p>

4.3.2.1 Summary of Letters to WSN

January 31, 2018 letter to WSN

- Duck Mountain 20 Year Forest Management Plan intro letter

July 18, 2018 letter from WSN

- Logging clearance letter from previous years logging on TLE land

November 1, 2018 letter to WSN

- Duck Mountain 20 Year Forest Management Plan update
- Notice of start of phase 2

July 4, 2019 letter to WSN

- Current Forest Description
- Baseline scenario

4.3.2.2 Summary of Meetings and Presentations at WSN

Meeting October 17th, 2017

Area forest manager and Operations planner met with Lands Manager from WSN at the LP FRD office to discuss LP timber purchase from WSN TLE and reserve land. Also discussed FMP and arranging a meeting with WSN Chief.

Meeting October 27th, 2017

LP Area forest manager and Operations planner met with WSN Lands Manager at the LP FRD office to further discuss a timber purchase agreement. Training of a WSN band member for supervising forestry operations and related work was also discussed.

Meeting November 6th, 2017

LP Area forest manager and Operations planner met with WSN Lands Manager and Chief at the Pizza Place to speak more about the timber purchase agreement specifics and also about Todd and Vern going to WSN in the new year to begin meeting on the 20 year FMP.

Meeting January 26th, 2018

LP Area forest manager and Operations planner met with WSN Lands Manager and WSN water consultant to discuss his thesis and data sharing. Currently working on a Wuskwi Siphk First Nation Water and Land Use Planning Project. LP provided mapping and GIS support for this study.

Meeting January 29th, 2018

Met with WSN Lands Manager and reviewed data sharing agreement. Discussed LP sharing imagery of WSN traditional lands.

Meeting February 9th, 2018

LP Area forest manager and Operations planner met with WSN Lands Manager and signed timber purchase agreement.

Meeting March 20th, 2018

LP Area forest manager and Operations planner met with WSN Lands Manager. Wuskwi Siphk leadership is not sure if they want to engage in information sharing at this time.

Meeting Apr 23rd, 2018

LP Area forest manager and Operations planner met with WSN Lands Manager. Created additional maps for the water study project and discussed upcoming planned meeting with Chief and Council.

Meeting July 9th, 2018

Met with Chief and Council at WSN Band Office and discussed upcoming years harvest plans and discussed Forest Management Plan.

Meeting September 18th, 2018

LP Area forest manager and Operations planner met with WSNF Lands Manager at the LP FRD office to discuss WSNF initiatives with which LP is assisting, INAC permits and scheduling of the next meeting with chief and council.

Meeting Oct 25th, 2018

LP Area forest manager met with WSNF Lands Manager. Discussed Bell River potential harvest, designing harvest areas for TLE selections and community leadership meeting possibilities.

June 23, 2019

LP Operations Supervisor met with WSNF Lands Manager and another community member in the field while deactivating road in the Bell River operating area. Discussed erosion control and berm locations.

June 26, 2019

LP Operations Supervisor met with WSNF Lands Manager in the field today in the Bell River operating area. Road decommissioning work was finishing today. Discussed closure work.

Aug. 12th, 2019 Natural Resources Canada announced funding for \$50,500 for WSNF to pursue business and training opportunities in a project that LP partnered with WSNF on.

4.3.3. Sapotaweyak Cree Nation



Sapotaweyak Cree Nation (SCN) is located in Treaty 4 territory, north of FML #3. The community speaks mainly Cree, but has a mixture of Plains Cree, Swampy Cree and Saulteaux languages. They are part of the Swampy Cree Tribal Council and also have lands and Traditional Territory in Treaty 5 Territory as well. Summaries of information sharing and engagement (Table 4.7) as well as community concerns are responses (Table 4.8) are displayed.

Table 4.7 Sapotaweyak Cree Nation Summary of Information Sharing and Engagement

Requirement	Details	Response
Description of the communication processes and activities	An overview of the planned communication processes and activities are described in section 4.1 Communication Plan.	Letters – 3 Phone calls – 13 Conversations – 1 Emails – 24 Texts - 8 Meetings – 3 Tours – 0
Description of when and how the communication occurred	Detailed in sub-sections below this table: Summary of Letters to Sapotaweyak Cree Nation Summary of Meetings and Presentations at Sapotaweyak Cree Nation	
Document what was presented	FMP Letter #1 - FMP invitation to participate (sent to four different persons) FMP Letter #2 - FMP update and notice of the start of phase 2 FMP Letter #3 – Baseline forest management scenario available for review Operating Plan letter informing community of LP's winter harvest (2018-2019) plans.	
Met with personnel (by job title)	Chief Lands Manager Consultant Employment Coordinator Nekote Partnership Liason	

Table 4.8 Sapotaweyak Cree Nation Concerns and Responses.

What we heard	How it influenced FMP, summary of response	Relevant Chapter or section
2018 fire salvage March 25, 2019 meeting	Discussion on salvage logging of burned Reserve and TLE lands around SCN. LP expressed interest in purchasing any timber that could be used in our facility.	n/a
Treaty Land Entitlement March 25, 2019	Discussed TLE resolution that SCN is pursuing. Would like to sell to LP fiber from those lands as well.	n/a
Tree Planting Opportunities	Shared contact information for Mountain Forest Section Renewal and Outland Tree Planting contractor	n/a
Regeneration surveys	Discussed possibility of SCN doing regeneration surveys for LP under contract	n/a
<u>FMP Concern</u> Moose Population and Moose Conservation Closure March 25, 2019	Discussed moose population trends and how moose habitat models were being employed to create the best possible moose habitat via harvest block planning and scheduling.	Ch. 5 Scenario Planning Section 5.7 Moose Emphasis Scenario Ch. 5 section 5.6.4.3 and 5.7.4.3. winter moose habitat Ch. 5 section 5.6.4.4. and 5.7.4.4. summer moose habitat
<u>FMP Information</u> FMP	General overview of what FMP is and what it contains.	Entire FMP

4.3.3.1 Summary of Letters to SCN

October 19th, 2018 Letter to SCN

- Information on LP's winter harvest plans

November 1st, 2018 Letter to SCN

- FMP update
- Notice of start of phase 2

July 4th, 2019 Letter to SCN

- Current forest description and baseline scenario letter

July 30th, 2019 Letter from SCN

- Requesting assistance with TLE process and economic opportunities

4.3.3.2 Summary of Meetings and Presentations at SCN

March 20th, 2019 – LP Area Forest Manager spoke with SCN Councillor during the Treaty Two Collective trade show. Arranged to have a meeting next week with Chief and Council in SCN

March 25th, 2019 – LP Area Forest Manager and Operations Planner met with Chief, Council and Land Manger. Discussed TLE, salvaging burned timber from SCN Lands, Forest Management Plan, Moose, economic development and work opportunities.

May 22nd, 2019 – SAP Lands Manager stopped by LP Woodlands office. Discussed regen surveys, FMP, Operating plan and fire salvage. SAP Lands Manager said LP could meet with land and resource committee sometime in the next few weeks.

4.3.4. *Manitoba Metis Federation*

The Manitoba Metis Federation (MMF) is a democratic and self-governing political representative for the Metis Nation's Manitoba Metis Community. The MMF promotes the political, social, cultural, and economic interests and rights of the Metis in Manitoba. They also deliver programs and services to the Metis community including: child and family services, justice, housing, youth, education, human resources, economic development and natural resources. Summaries of information sharing and engagement (Table 4.9) as well as community concerns are responses (

Table 4.10 Table 4.8) are displayed.

Table 4.9 Manitoba Metis Federation Summary of Information Sharing and Engagement

Requirement	Details	Response
Description of the communication processes and activities	An overview of the planned communication processes and activities are described in section 4.1 Communication Plan.	Letters – 5 Phone calls – 26 Emails – 34 Meetings – 2 Conference calls – 3
Description of when and how the communication occurred	Detailed in sub-sections below this table: Summary of Letters to the Manitoba Metis Federation Summary of Meetings and Presentations at the Manitoba Metis Federation	
Document what was presented	FMP Letter #1 - FMP invitation to participate (sent to four different persons) FMP Letter #2 - FMP update and notice of the start of phase 2 FMP Letter #3 – Baseline forest management scenario available for review Operating Plan letter informing community of LP's winter harvest (2018-2019) plans.	
Met with personnel (by job title)	President Consultation Project Officer Engagement and Consultation Coordinator Consultation Project Officer Employment Coordinator Natural Resources Coordinator Engagement and Consultation Group	

Table 4.10 Manitoba Metis Federation Concerns and Responses.

What we heard	How it influenced FMP, summary of response	Relevant Chapter or section
<p>FMP Information</p> <p>FMP and Operating Plan differences</p>	<p>In a meeting discussed how Forest Management Plan is strategic and long-term (20 years), while an Operating Plan is 2 years of detail with 3 years of projection roads, blocks, and renewal.</p>	<p>Ch 1 Introduction</p>

4.3.4.1 Summary of Letters to MMF

January 31, 2018 letter to MMF

- Duck Mountain 20 Year Forest Management Plan intro letter

November 1st, 2018 Letter to MMF

- FMP update
- Notice of start of phase 2

July 4th, 2019 Letter to MMF

- Current forest description and baseline scenario letter

4.3.4.2 Summary of Meetings with MMF

April 11th, 2018 – LP Area Forest Manager and Operations Planner met with MMF Consultation Coordinator and Natural Resources Coordinator. Discussed operating plan and forest management plan, resolution No. 8. Provided Operating plan maps as well as several license area overview maps.

July 19th, 2018 – LP Area Forest Manager and Operations Planner had a conference call with MMF Consultation Coordinator and Engagement and Consultation Coordinator. Discussed FMP current status, employment opportunities and economic development.

October 26th, 2018 – LP Area Forest Manager and Operations Planner had a conference call with MMF Engagement and Consultation Coordinator, Natural Resources Coordinator and Consultation Project Officer. Discussed Forest Management Plan Meeting and Economic Development.

Nov. 26th, 2018 – LP Area Forest Manager had a conference call with MMF Engagement and Consultation Coordinator and Natural Resources Coordinator to discuss FMP, future partnerships, and economic development opportunities.

March 26th, 2019 – LP Area Forest Manager and Operations Planner had a conference call with MMF Engagement and Consultation Coordinator, Natural Resources Coordinator and Consultation Project Officer.

4.3.5. *Metis Rights Coalition*

The Metis Rights Coalition (MRC) is based around San Clara, MB. Summaries of information sharing and engagement (Table 4.11) as well as community concerns and responses (Table 4.12

Table 4.10 Table 4.8) are displayed.

Table 4.11 Metis Rights Coalition Summary of Information Sharing and Engagement

Requirement	Details	Response
Description of the communication processes and activities	An overview of the planned communication processes and activities are described in section 4.1 Communication Plan.	Letters – 4 Phone calls – 24 Emails – 2 Texts - 1 Meetings – 2 Tours – 0
Description of when and how the communication occurred	Detailed in sub-sections below this table: Summary of Letters to Metis Rights Coalition Summary of Meetings and Presentations at Metis Rights Coalition	
Document what was presented	FMP Letter #1 - FMP invitation to participate (sent to four different persons) FMP Letter #2 - FMP update and notice of the start of phase 2 FMP Letter #3 – Baseline forest management scenario available for review Operating Plan letter informing community of LP's winter harvest (2018-2019) plans. <u>Presentations:</u> Natural Range of Variation (NRV) Road decommissioning summary table Moose Habitat Model Outputs	
Met with personnel (by job title)	Spokesman	

Table 4.12 Metis Rights Coalition Concerns and Responses.

What we heard	How it influenced FMP, summary of response	Relevant Chapter or section
Access to firewood		n/a
Crown Land Harvesting outside of FMU 13. FMU 10 and 11 provide the best access to firewood for the community.		n/a
<p><u>FMP Concern</u></p> <p>Moose Populations and the Moose Conservation Closure</p>		
		<p>Ch. 5 Scenario Planning</p> <p>Sections 5.6.3.2; 5.7.3.2; 5.8.3.2</p> <p>Ch. 6 FMP Implementation</p> <p>Section 6.3.2</p>

What we heard	How it influenced FMP, summary of response	Relevant Chapter or section
<p><u>FMP Concern</u></p> <p>Natural Range of Variation (fire emulation), how and why? August 30th, 2019 meeting</p>	<p>Discussed NRV targets and how they have been added in as constraints.</p>	<p>Ch.5 Scenario Planning</p> <p>Section 5.8.2 Choosing Objectives (NRV is third)</p> <p>5.6.1.1 NRV explained</p>
<p><u>FMP Concern</u></p> <p>Old growth to remain on the landscape?</p> <p>August 30th, 2019 meeting</p>	<p>Discussed NRV targets and showed box and whisker graphs for trembling aspen and white spruce for 200 years based on the baseline scenario.</p>	<p>Old forest is part of Natural Range of Variation</p> <p>Ch. 5 Scenario Planning</p> <p>Sections 5.2.2; 5.4.3; and 5.6.1.1</p>
<p><u>FMP Concern</u></p> <p>Patch size – Would like to see harvest aggregated more to provide more rest areas for large wildlife species.</p> <p>November 15th, 2018 meeting.</p>	<p>Discussed how patch size is a component considered in NRV. Larger cutblocks typically means less road which is something we are also targeting.</p>	<p>Ch. 5 Scenario Planning</p> <p>Sections 5.6.3.1; and 5.7.3.1</p>
<p><u>FMP Concern</u></p> <p>Wildlife habitat always available for all species, not just moose.</p> <p>November 15th, 2018 meeting</p>	<p>Discussed indicator birds, marten model, tied in to NRV and maintaining balanced cover types.</p>	<p>Ch. 5 Scenario Planning</p> <p>Indicator Birds</p> <p>Sections 5.6.4.1; and 5.7.4.1</p> <p>Marten – sections 5.6.4.5; 5.7.4.5</p>

4.3.5.1 Summary of Letters to MRC

Metis Rights Coalition received three (3) letters from LP. All three of these letters were the open letters of invitation to participate in the Forest Management Plan that were sent to all Indigenous communities.

FMP Letter #1 - Jan. 31, 2018. FMP invitation to participate (Appendix 1).

FMP Letter #2 - October 31, 2018. FMP update and notice of the start of phase 2 information sharing and engagement (Appendix 2).

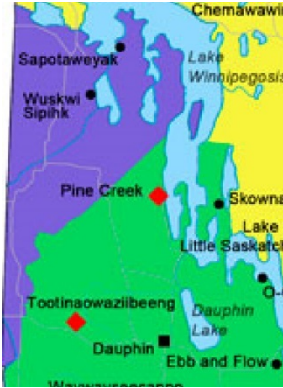
FMP letter #3 – June 21, 2019. Baseline Forest Management Scenario completed (Appendix 3).

4.3.5.2 Summary of Meetings and Presentations at MRC

Nov. 15th, 2018 – LP Area Forest Manager and Western Regional Forester and MRC representatives/spokesmen. Discussed access concerns, crown land harvesting, FMP and other concerns. Shared wall sized maps to MRC community members and another meeting was tentatively scheduled.

Aug. 30th, 2019 – Area Forest Manager and Operations Supervisor met with MRC Spokesman. Discussed 20-year plan, moose, NRV, gates and roads/road deactivation, species at risk and patch size.

4.3.6. Tootinaowaziibeeng Treaty Reserve (TTR)



Tootinaowaziibeeng Treaty Reserve (TTR) is located adjacent to the southern edge of the Duck Mountain Provincial Forest. TTR is signatory to Treaty 4. The Valley River runs through the TTR reserve. Summaries of information sharing and engagement (Table 4.13 Table 4.9) as well as community concerns are responses (Table 4.14 Table 4.8) are displayed.

Table 4.13 TTR Summary of Information Sharing and Engagement

Requirement	Details	Response
Description of the communication processes and activities	An overview of the planned communication processes and activities are described in section 4.1 Communication Plan.	Letters – 5 Phone calls – 36 Emails – 2 Fax – 2 Texts - 17 Meetings – 4 Tours – 1
Description of when and how the communication occurred	Detailed in sub-sections below this table: Summary of Letters to Tootinaowaziibeeng Treaty Reserve Summary of Meetings and Presentations at Tootinaowaziibeeng Treaty Reserve	
Document what was presented	FMP Letter #1 - FMP invitation to participate (sent to four different persons) FMP Letter #2 - FMP update and notice of the start of phase 2 FMP Letter #3 – Baseline forest management scenario available for review Operating Plan letter informing community of LP's winter harvest (2018-2019) plans.	
Met with personnel (by job title)	Chief Councillor Admin	

Table 4.14 TTR Concerns and Responses.

What we heard	How it influenced FMP, summary of response	Relevant Chapter or section
Economic development opportunities	Discussed several partnership and economic development opportunities. Shared in detail the opportunities available at the mill facility. Supported and partnered with TTR for an on-reserve initiative.	n/a
Building product donation	LP willing to provide siding, subject to receiving a product donation letter, and housing framed and ready for siding to be installed.	n/a
Chief wants to start a sawmill on TTR reserve	Discussion with the province of Manitoba would be necessary regarding access to softwood saw logs.	n/a
Economic development opportunities	Discussed economic development opportunities at June 10 th , 2019 meeting.	n/a
Housing/framing project	Discussion and phone calls with Caroline Mintuck.	n/a
<u>FMP Concerns</u>		n/a
None shared		

4.3.6.1 Summary of Letters to TTR

TTR received three (3) letters from LP. All three of these letters were the open letters of invitation to participate in the Forest Management Plan that were sent to all Indigenous communities.

FMP Letter #1 - Jan. 31, 2018. FMP invitation to participate (Appendix 1).

FMP Letter #2 - October 31, 2018. FMP update and notice of the start of phase 2 information sharing and engagement (Appendix 2).

FMP letter #3 – June 21, 2019. Baseline Forest Management Scenario completed (Appendix 3).

4.3.6.2 Summary of Meetings and Presentations at TTR

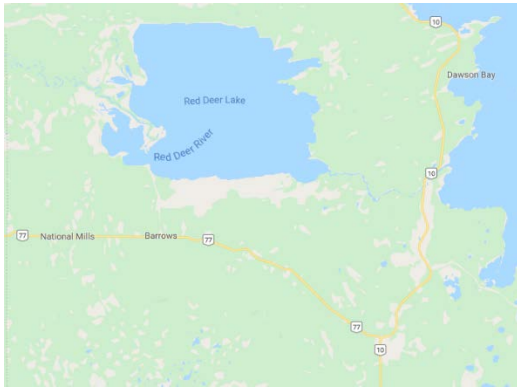
April 17th, 2019 – LP Area Forest Manager met with TTR Councillor and Employment Coordinator. Discussed primarily economic development opportunities and mill jobs but also the current status of the FMP.

May 9th, 2019 – LP Area Forest Manager met with TTR Councillor and Employment Coordinator. Discussed follow up items from April 17 meeting, mill tour the week of June 3-7 with Chief and Council, partnership opportunities and FMP meeting potential in June.

June 10th, 2019 – TTR Employment Coordinator came to see LP Area Forest Manager. Discussed partnership opportunities further and also spoke about FMP. Shared slides and maps that LP would like to review with TTR leadership with regards to the FMP.

July 9th, 2019 - Mill Tour and lunch meeting with TTR community members including Employment Coordinator. LP Human Resources Manager made a presentation about the application process and hiring process with LP.

4.3.7. Barrows Community Council



The Barrows Community Council includes the northern communities of Barrows, Baden, Dawson Bay, National Mills, Red Deer Lake, and the Powell Community Council. These communities are north or north-east of the Porcupine Mountain Provincial Forest. Summaries of information sharing and engagement (Table 4.15Table 4.9) as well as community concerns are responses (Table 4.16Table 4.8) are displayed.

Table 4.15 Barrows Community Council Summary of Information Sharing and Engagement

Requirement	Details	Response
Description of the communication processes and activities	An overview of the planned communication processes and activities are described in section 4.1 Communication Plan.	Letters – 6 Phone calls – 4 Emails – 1 Meetings – 2
Description of when and how the communication occurred	Detailed in sub-sections below this table: Summary of Letters to Barrows Community Council Summary of Meetings and Presentations at Barrows Community Council	
Document what was presented	FMP Letter #1 - FMP invitation to participate (sent to four different persons) FMP Letter #2 - FMP update and notice of the start of phase 2 FMP Letter #3 – Baseline forest management scenario available for review Operating Plan letter informing community of LP's winter harvest (2018-2019) plans.	
Met with personnel (by job title)	Mayor Councillor	

Table 4.16 Barrows Community Council Concerns and Responses.

What we heard	How it influenced FMP, summary of response	Relevant Chapter or section
<p><u>Non-FMP concerns</u> None Shared</p>		n/a
<p><u>FMP Concern</u> Buffer on Community cemetery and road accessing it April 9, 2018</p>	<p>LP is buffering the Barrows cemetery from harvest. They [Barrows CC] are pleased with our plans to buffer the cemetery and road. Was an opportunity to discuss how buffers are planned and implemented both strategically and operationally for streams, features and important sites.</p>	<p>Note: this area is outside FML #3, but still important Operational buffer guidelines from Province of Manitoba buffer width mitigation with Province of Manitoba's Integrated Resource Management Team</p>

4.3.7.1 Summary of Letters to Barrows Community Council

The Barrows Community Council received three (3) letters from LP. All three of these letters were the open letters of invitation to participate in the Forest Management Plan that were sent to all Indigenous communities.

FMP Letter #1 - Jan. 31, 2018. FMP invitation to participate (Appendix 1).

FMP Letter #2 - October 31, 2018. FMP update and notice of the start of phase 2 information sharing and engagement (Appendix 2).

FMP letter #3 – June 21, 2019. Baseline Forest Management Scenario completed (Appendix 3).

4.3.7.2 Summary of Meetings and Presentations at Barrows Community Council

April 9th, 2018 - LP Operations Supervisor and Operations Technician met with Barrows Community Council to discuss 20-year FMP and harvest plans near the community. They are pleased with our plans to buffer the cemetery and road and had no other concerns or comments with regards to the forest management plan.

4.3.8. Treaty 2 Collective



The Treaty 2 Collective represents the communities located within Treaty 2 Traditional Territory and also several communities within Treaty 4. Summaries of information sharing and engagement (Table 4.17-Table 4.9) as well as community concerns and responses (Table 4.18-Table 4.8) are displayed.

Table 4.17 Treaty 2 Collective Summary of Information Sharing and Engagement

Requirement	Details	Response
Description of the communication processes and activities	An overview of the planned communication processes and activities are described in section 4.1 Communication Plan.	Letters – 3 Phone calls – 12 Emails – 1 Meetings – 3 (including trade show) Tours – 0
Description of when and how the communication occurred	Detailed in sub-sections below this table: Summary of Letters to Treaty 2 Coalition Summary of Meetings and Presentations at Treaty 2 Coalition	
Document what was presented	FMP Letter #1 - FMP invitation to participate FMP Letter #2 - FMP update and notice of the start of phase 2 FMP Letter #3 – Baseline forest management scenario available for review Operating Plan letter informing community of LP's winter harvest (2018-2019) plans.	
Met with personnel (by job title)	Community Relations	

Table 4.18 Treaty 2 Collective Concerns and Responses.

What we heard	How it influenced FMP, summary of response	Relevant Chapter or section
Work opportunities March 15, 2019	LP provided mill job applications and discussed hiring process and positions available with several community members.	n/a
<u>FMP Concern</u> Is logging in the Duck Mountains sustainable? February 2, 2019	AAC set for each FMU by Manitoba Sustainable Development. Regen survey requirements. Discussed age classes of forest within FML 3.	Ch. 2 Report of Past Operations ; Section 2.5. Planning and Harvesting outlines sustainable practices Ch. 5 Scenario Planning section 5.4.1. Harvest Volume Flow outlines sustainable harvest
<u>FMP Concerns</u> Sacred sites and artifacts, how are they protected? February 2, 2019	Locations are not shared. LP has a confidential spatial layer in the GIS system to hold this kind of information, but locations and descriptions recorded and excluded from harvest area's when known. Surveyors, staff, loggers all trained to recognize artifacts and cultural heritage resources regularly. Probability screening completed during operating plan development.	dealt with operationally on a site-specific basis

4.3.8.1 Summary of Letters to Treaty 2 Collective

The Treaty 2 Coalition received three (3) letters from LP. All three of these letters were open letters of invitation to participate in the Forest Management Plan that were sent to all Indigenous communities.

FMP Letter #1 - Jan. 31, 2018. FMP invitation to participate (Appendix 1).

FMP Letter #2 - October 31, 2018. FMP update and notice of the start of phase 2 information sharing and engagement (Appendix 2).

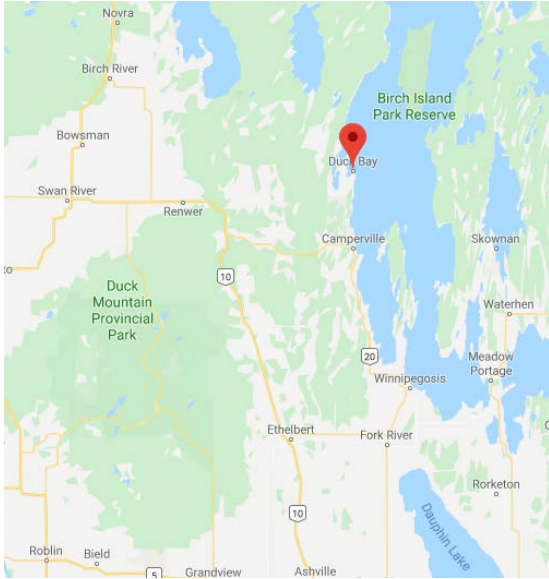
FMP letter #3 – June 21, 2019. Baseline Forest Management Scenario completed (Appendix 3).

4.3.8.2 Summary of Meetings and Presentations at Treaty 2 Collective

February 2nd, 2019 - LP Area Forest Manager, District Forester and Operations Planner met with two Community Relations Representatives for Treaty 2 Coalition in Winnipeg. Discussed reforestation, sacred site protection, and work opportunities.

March 15, 2109 - LP Area Forest Manager and Human Resources Manager attended the Treaty 2 trade show and setup a booth. Resources were available about both mill work opportunities and the Forest Management Plan.

4.3.9. Duck Bay



Duck Bay is situated on the west edge of Lake Winnipegosis. Duck Bay is north of both Camperville and Pine Creek First Nation. Summaries of information sharing and engagement (Table 4.19Table 4.9) as well as community concerns are responses (

Table 4.20 Table 4.8) are displayed.

Table 4.19 Duck Bay Summary of Information Sharing and Engagement

Requirement	Details	Response
Description of the communication processes and activities	An overview of the planned communication processes and activities are described in section 4.1 Communication Plan.	Letters – 3 Phone calls – 16 Emails – 2 Meetings – 1
Description of when and how the communication occurred	Detailed in sub-sections below this table: Summary of Letters to Duck Bay Summary of Meetings and Presentations at Duck Bay	
Document what was presented	FMP Letter #1 - FMP invitation to participate FMP Letter #2 - FMP update and notice of the start of phase 2 FMP Letter #3 – Baseline forest management scenario available for review Operating Plan letter informing community of LP's winter harvest (2018-2019) plans.	
Met with personnel (by job title)	Mayor of Duck Bay Councillors	

Table 4.20 Duck Bay Concerns and Responses.

What we heard	How it influenced FMP, summary of response	Relevant Chapter or section
Economic Development May 15, 2018	Contract logging opportunities available.	n/a
Work opportunities May 15, 2018	Mill jobs, tree planting opportunities and seasonal survey work discussed. Shared contact information	n/a
<u>FMP Concern</u> Is current harvesting sustainable? May 15, 2018	Yes, harvesting is sustainable, since both Spruce Products Ltd. and LP Canada Ltd. are at or below the provincially mandated Annual Allowable Cut.	Ch. 2 Report of Past Operations Section 2.5.7
<u>FMP Concern</u> reforestation	100% of all area harvested are reforested by either natural regeneration (hardwood) or by planting softwood seedlings (softwood).	Ch. 2 Report of Past Operations Section 2.7.5
<u>FMP Concern</u> regeneration surveys		Ch. 2 Report of Past Operations Section 2.7.5
<u>FMP Concern</u> <u>Wildlife Habitat, moose and other species</u> <u>May 15, 2018</u>	Working towards obtaining Natural Range of Variation model for FML #3 which would help with maintaining habitat. Several wildlife specific models to be used, particularly indicator bird model (17 species)	Ch.5 Scenario Planning Section 5.8.2 Choosing Objectives (NRV is third) 5.6.1.1 NRV explained

4.3.9.1 Summary of Letters to Duck Bay

Duck Bay Chief and Council received three (3) letters from LP. All three of these letters were the open letters of invitation to participate in the Forest Management Plan that were sent to all Indigenous communities.

FMP Letter #1 - Jan. 31, 2018. FMP invitation to participate (Appendix 1).

FMP Letter #2 - October 31, 2018. FMP update and notice of the start of phase 2 information sharing and engagement (Appendix 2).

FMP letter #3 – June 21, 2019. Baseline Forest Management Scenario completed (Appendix 3).

4.3.9.2 Summary of Meetings and Presentations at Duck Bay

May 15, 2018 - Duck Bay Leadership and Community met with LP Area Forest Manager, Operations Planner and Manitoba Forestry and Wildlife staff. Discussion items included the Forest Management Plan and Operating Plans. In addition, a forum was provided for Duck Bay to express any community concerns. Economic Development, work opportunities, sustainable harvesting and wildlife habitat were the main topics of discussion.

4.3.10. Opaskwayak Cree Nation



Opaskwayak Cree Nation (OCN) is located near The Pas, Manitoba. OCN has a membership of 6,180 as of 2019. The Opaskwayak people signed Treaty 5 in the year 1876. Summaries of information sharing and engagement (Table 4.21Table 4.19Table 4.9) as well as community concerns are responses (Table 4.22Table 4.8) are displayed.

Table 4.21 Opaskwayak Cree Nation Summary of Information Sharing and Engagement

Requirement	Details	Response
Description of the communication processes and activities	An overview of the planned communication processes and activities are described in section 4.1 Communication Plan.	Letters – 3 Phone calls – 13 Emails – 1 Meetings – 1 Tours – 0
Description of when and how the communication occurred	Detailed in sub-sections below this table: Summary of Letters to Opaskwayak Cree Nation Summary of Meetings and Presentations at Opaskwayak Cree Nation	
Document what was presented	FMP Letter #1 - FMP invitation to participate FMP Letter #2 - FMP update and notice of the start of phase 2 FMP Letter #3 – Baseline forest management scenario available for review Operating Plan letter informing community of LP's winter harvest (2018-2019) plans.	
Met with personnel (by job title)	Resource Committee (4) Elder (1)	

Table 4.22 Opaskwayak Cree Nation Concerns and Responses.

What we heard	How it influenced FMP, summary of response	Relevant Chapter or section
Mill Facility Emissions April 24, 2018	Emission and ground water monitoring regulatory requirements. Explained air and water quality monitoring requirements for the mills Environment Act License.	
Buffers how are they determined? April 24, 2018	Province of Manitoba has guidelines for minimum buffer widths. Buffers are also regularly reviewed during the mitigation process for individual cutblocks.	operational
<u>FMP Information</u> OCN harvests berries and traditional medicinal plants in the Kettle Hills Area. April 24, 2018	The Kettle Hills is either Treaty Land Entitlement (TLE) area, or Provincial Park. There are no forest management activities on TLE land or the Kettle Hills provincial park.	n/a
<u>FMP Concern</u> Moose population concern April 24, 2018	Discussed how moose habitat models were planned to be utilized with the goal of maintaining on enhancing the amount of moose habitat on the landbase.	Ch. 5 Scenario Planning Section 5.7 Moose Emphasis Scenario
<u>FMP Concern</u> Hydrological impacts from forest operations April 24, 2018	Limits on percentage of a watershed allowed to be in a harvested state. Road construction standard operating guidelines.	Ch. 5 Scenario Planning Sections 5.5.6; 5.6.3.3; and 5.7.3.3
<u>FMP Concern</u> Herbicide use in FML 3? April 24, 2018	Ground/backpack application only, referred to summary in annual reports. Very little herbicide use.	Ch. 2 Report of Past Operations Section 2.7.6

4.3.10.1 Summary of Letters to Opaskwayak Cree Nation

Opaskwayak Cree Nation received three (3) letters from LP. All three of these letters were the open letters of invitation to participate in the Forest Management Plan that were sent to all Indigenous communities.

FMP Letter #1 - Jan. 31, 2018. FMP invitation to participate (Appendix 1).

FMP Letter #2 - October 31, 2018. FMP update and notice of the start of phase 2 information sharing and engagement (Appendix 2).

FMP letter #3 – June 21, 2019. Baseline Forest Management Scenario completed (Appendix 3).

4.3.10.2 Summary of Meetings and Presentations at Opaskwayak Cree Nation

April 24th, 2018 - Opaskwayak Cree Nation met with LP. LP Operations Planner and Operations Technician met with the Resource Committee (5 members). Sustainable Development staff from the Forestry and Wildlife Branches also attended. An overview of LP and the FMP process was discussed. The OCN resource committee had questions and concerns about moose, buffers, water quality, herbicide use, and harvest practices. LP shared the objectives of the engagement process to gather information to help us create the forest management plan.

4.4. COMMUNITIES WITH NO CONCERNS

Some Indigenous and Northern communities specifically stated that they had no concerns regarding the FML #3 Forest Management Plan. These communities include:

- Meadow Portage (Oct. 1, 2019);
- Spence Lake Community Council (Sept. 13, 2018);
- Crane River Community Council (Nov. 1st, 2018); and,
- Waterhen Community Council (Nov. 1st, 2018).

4.5. COMMUNITIES WHO DID NOT ENGAGE

There are Indigenous communities who did not respond when contacted about the 20-Year Forest Management Plan in FML #3. These communities were contacted and invited to participate multiple times by letter (Appendices 1 to 3). Each letter was followed up by at least one phone call from the LP Area Forest Manager.

Essentially, in the proposed 'Information Sharing and Engagement' process, LP shared information with each of these communities, but unfortunately there was not a two-way exchange of information. No meetings were successfully conducted with these communities, despite multiple attempts. These communities were (*listed alphabetically*):

- Camperville Community Council
- Dauphin River First Nation
- Ebb and Flow First Nation
- Keeseekoowenin First Nation
- Lake Manitoba First Nation
- Lake St Martin First Nation
- Little Saskatchewan First Nation
- O-Chi-Chak-Ko-Sipi First Nation
- Pelican Rapids Community Council
- Pinaymootang First Nation
- Rock Ridge Community Council
- Rolling River First Nation
- Sandy Bay First Nation
- Skownan First Nation
- Waywayseecappo First Nation

4.6. STAKEHOLDER ADVISORY COMMITTEE - SUMMARY REPORT OF COMMUNICATIONS

The SAC (Stakeholder Advisory Committee) is composed of organizations and persons who are stakeholders in the Duck Mountain Provincial Forest. These organizations and individuals include trappers, snowmobilers, naturalists, environmental groups, cottage owners *etc.* The SAC was first formed in 1994 and has met continuously for the last 25 years.

The SAC's objectives were to:

- Assist LP to develop Operating Plans and Forest Management Plans, considering present and future forest uses in FML #3
- Represent the range of stakeholder and community interests and concerns in plan development
- Provide a forum to present views and opinions about Operating Plans and Forest Management Plans

The original SAC membership list (1994) included these organizations:

- LP (Chair and resource)
- Manitoba Natural Resources
- Manitoba Environment
- Manitoba Metis Federation
- Northern Association of Community Councils (Western Region)
- Manitoba Environmental Groups
- Western Canada Wilderness Committee
- Future Forest Alliance (Concerned Citizens of the Valley)
- Manitoba Eco-Network Inc.
- Time to Respect Earth's Ecosystems
- Manitoba Naturalists Society
- Canadian Parks and Wilderness Society

First Nations

- West Region Tribal Council
- Ebb and Flow
- Crane River
- Waterhen
- Pine Creek
- Swampy Cree Tribal Council
- Wuskwi Sipiik (Indian Birch)
- Sapotaweyak (Shoal River)

Other

- Mountain Quota Holders Association
- Manitoba Trappers Association
- West Region Elk Management Board
- West Parkland Economic Development

- Outfitters
- Swan Valley Sport Fishing Enhancement Inc.

Cottage Owners Association

- Wellman/Glad Lake
- Singuish Lake
- Childs Lake
- Blue Lakes

Indigenous communities have chosen to not be labelled as 'stakeholders' and communicate through the 'Information Sharing and Engagement' process described in the previous section. The current (2019) SAC membership includes (alphabetically):

- Cottage Owner's Assoc.
- Duck Mountain Trappers Association
- Ducks Unlimited Canada
- Environmental Assessment and Licensing Branch
- Intermountain Conservation District
- Manitoba Agriculture
- Manitoba Sustainable Development
- Midwest Lodge & Outfitters
- Mixedwood Forest Society
- Mountain Forest Section Renewal Company Ltd.
- Mountain Quota Holders Association
- Nepinak Resource Consulting
- Swan Lake Watershed Conservation District
- Swan Valley Outdoors Association Inc.
- Swan Valley Regional Secondary School
- Swan Valley Snowmobile Association
- Swan Valley Sport Fishing Enhancement
- West Region Elk Management
- Western Manitoba Antler Dealer

4.6.1. Stakeholder Advisory Committee meetings

SAC (Stakeholder Advisory Committee) meetings are typically held three to four times per year. Note that the SAC chooses not to meet in the summer months of July or August. Forest management in general is discussed, as is the Operating Plan, and the news from each stakeholder organization. The 20-year Forest Management Plan (FMP) is also discussed regularly, especially when SAC input is needed, or portions of the FMP were completed and reported to the SAC.

SAC meetings both inform the stakeholders and provide an opportunity for engagement. SAC meetings dates and Forest Management Plan topics are summarized in Table 4.23.

Table 4.23 Stakeholder Advisory Committee meeting dates and FMP topics

SAC Meeting Date	SAC engagement on the FMP – topic summary
2017-2018 Operating Year (Sept. to June)	
Oct. 23, 2017	<p>Proposed Table of Contents for combined Forest Management Plan and Environmental Assessment</p> <p>Ch1 - Introduction (FMP update, combined FMP and EA)</p> <p>Ch2 - Past Forest Management Activities (since 2006)</p> <p>Ch3 - Current Forest Conditions (Ecological, Social, and Economic)</p> <p>Ch4 - Information Sharing and Engagement (3 rounds)</p> <p>Ch5 - Scenario Planning and Sustainability Analysis (2 scenarios to be evaluated, one chosen to be the 'Preferred Management Scenario')</p> <p>Ch6 - Future Forest Conditions (modeling output)</p> <p>Ch7 - Implementation (of the 20 Year Forest Management Plan)</p> <p>Ch8 - Environmental Effects Assessment (done by consultant)</p> <p>Ch9 - Effects Monitoring and Research (e.g. bird monitoring, Pre-Harvest Surveys, regeneration surveys)</p>
Feb. 12, 2018	SAC meeting focus was on the 2018-2020 Operating Plan. SAC members had an opportunity to review all proposed forest management activities and make changes.

SAC Meeting Date	SAC engagement on the FMP – topic summary
May 14, 2018	<p>(Indigenous Communities) Information Sharing & Engagement</p> <p>Manitoba government literature review on moose is finished</p> <p>NCASI (Northern Council Air & Stream Improvement) www.ncasi.org/ also did a moose literature review. Key findings on moose in North America included:</p> <ul style="list-style-type: none"> a) Moose have recently reclaimed parts of their North American range in areas with active forest management. b) Young forest stands regenerating after timber harvest provide areas of abundant browse which is an essential component of moose habitat. c) Ongoing forest management and timber harvesting are compatible with the needs of moose for early successional stands and other forest types during different seasons. <p>Ch 2 Report of Past Operations (2006-present) finished (paper copy available for SAC review)</p>
2018-2019 Operating Year (Sept. to June)	
Oct. 29, 2018	<p>Information Sharing & Engagement</p> <ul style="list-style-type: none"> -communication plan being finalized -follow up with mutual sign-off by Sustainable Development and LP <p>Landbase</p> <ul style="list-style-type: none"> -FML 3 landbase being finalized and mutual sign-off -will start modeling with final approved landbase <p>Wildlife Habitat</p> <p>Moose habitat – moose habitat modeling (landscape level)</p> <ul style="list-style-type: none"> -based on Wildlife Branch’s winter survey data; challenge is summer habitat
Feb. 12, 2019	<p>FMP Status by chapter</p> <ul style="list-style-type: none"> Ch1 Introduction Ch2 Past Forest Management Activities (2006 to 2019) Approved in March 2018 Ch3 Current Forest Conditions - Should be approved Feb. 26th, 2019 Ch4 Information Sharing and Engagement (3 rounds plus documentation) Ch5 Scenario Planning and Sustainability Analysis (Assessment) (2 scenarios to be evaluated, one chosen to be the 'Preferred Management Scenario' (PMS)) Ch6 Future Forest Conditions (for the Preferred Management Scenario only) Ch7 Implementation (of the 20 Year Forest Management Plan)

SAC Meeting Date	SAC engagement on the FMP – topic summary																																																																																																																																								
	<p>Ch8 Environmental Effects Assessment</p> <p>Ch9 Effects Monitoring and Research (e.g. bird monitoring, Pre-Harvest Surveys, road monitoring, regeneration surveys, cooperative projects)</p> <p>Scenario Design and Modeling overview</p> <p>Forest management Scenarios one step at a time</p> <table border="1" data-bbox="358 583 1450 936"> <thead> <tr> <th>Phase</th> <th>Scenario Name</th> <th></th> <th></th> <th></th> <th></th> <th></th> <th></th> <th></th> <th></th> <th></th> <th></th> </tr> </thead> <tbody> <tr> <td rowspan="5">Aspatial</td> <td>Max Even</td> <td>✓</td> <td></td> <td></td> <td></td> <td></td> <td></td> <td></td> <td></td> <td></td> <td></td> </tr> <tr> <td>OPGS</td> <td>✓</td> <td>✓</td> <td></td> <td></td> <td></td> <td></td> <td></td> <td></td> <td></td> <td></td> </tr> <tr> <td>Seral NRV</td> <td>✓</td> <td>✓</td> <td>✓</td> <td></td> <td></td> <td></td> <td></td> <td></td> <td></td> <td></td> </tr> <tr> <td>Cover Type</td> <td>✓</td> <td>✓</td> <td>✓</td> <td>✓</td> <td></td> <td></td> <td></td> <td></td> <td></td> <td></td> </tr> <tr> <td>Silviculture</td> <td>✓</td> <td>✓</td> <td>✓</td> <td>✓</td> <td>✓</td> <td></td> <td></td> <td></td> <td></td> <td></td> </tr> <tr> <td rowspan="4">Spatial</td> <td>Planned</td> <td>✓</td> <td>✓</td> <td>✓</td> <td>✓</td> <td>✓</td> <td>✓</td> <td>✓</td> <td></td> <td></td> <td></td> </tr> <tr> <td>Roads</td> <td>✓</td> <td>✓</td> <td>✓</td> <td>✓</td> <td>✓</td> <td>✓</td> <td>✓</td> <td>✓</td> <td></td> <td></td> </tr> <tr> <td>Patches</td> <td>✓</td> <td>✓</td> <td>✓</td> <td>✓</td> <td>✓</td> <td>✓</td> <td>✓</td> <td>✓</td> <td>✓</td> <td></td> </tr> <tr> <td>Watershed</td> <td>✓</td> <td>✓</td> <td>✓</td> <td>✓</td> <td>✓</td> <td>✓</td> <td>✓</td> <td>✓</td> <td>✓</td> <td>✓</td> </tr> <tr> <td rowspan="2">Moose</td> <td>Moose1</td> <td>✓</td> <td>✓</td> <td>✓</td> <td>✓</td> <td>✓</td> <td>✓</td> <td>✓</td> <td>✓</td> <td>✓</td> <td>✓</td> </tr> <tr> <td>Moose2</td> <td>✓</td> <td>✓</td> <td>✓</td> <td>✓</td> <td>✓</td> <td>✓</td> <td>✓</td> <td>✓</td> <td>✓</td> <td>✓</td> </tr> </tbody> </table>	Phase	Scenario Name											Aspatial	Max Even	✓										OPGS	✓	✓									Seral NRV	✓	✓	✓								Cover Type	✓	✓	✓	✓							Silviculture	✓	✓	✓	✓	✓						Spatial	Planned	✓	✓	✓	✓	✓	✓	✓				Roads	✓	✓	✓	✓	✓	✓	✓	✓			Patches	✓	✓	✓	✓	✓	✓	✓	✓	✓		Watershed	✓	✓	✓	✓	✓	✓	✓	✓	✓	✓	Moose	Moose1	✓	✓	✓	✓	✓	✓	✓	✓	✓	✓	Moose2	✓	✓	✓	✓	✓	✓	✓	✓	✓	✓
Phase	Scenario Name																																																																																																																																								
Aspatial	Max Even	✓																																																																																																																																							
	OPGS	✓	✓																																																																																																																																						
	Seral NRV	✓	✓	✓																																																																																																																																					
	Cover Type	✓	✓	✓	✓																																																																																																																																				
	Silviculture	✓	✓	✓	✓	✓																																																																																																																																			
Spatial	Planned	✓	✓	✓	✓	✓	✓	✓																																																																																																																																	
	Roads	✓	✓	✓	✓	✓	✓	✓	✓																																																																																																																																
	Patches	✓	✓	✓	✓	✓	✓	✓	✓	✓																																																																																																																															
	Watershed	✓	✓	✓	✓	✓	✓	✓	✓	✓	✓																																																																																																																														
Moose	Moose1	✓	✓	✓	✓	✓	✓	✓	✓	✓	✓																																																																																																																														
	Moose2	✓	✓	✓	✓	✓	✓	✓	✓	✓	✓																																																																																																																														
Apr. 29, 2019	<p>Natural Range of Variability (fire emulation) – presentation to SAC</p> <p>Coarse Filter Biodiversity represented by 17 indicator bird species – presentation to SAC</p> <p>Timeline for Plan Submission – Gantt chart</p>																																																																																																																																								
2019-2020 Operating Year (Sept. to June)																																																																																																																																									
Sept. 9, 2019	<p>Timeline for Plan Submission - Gantt chart</p> <p>Terms of Reference – update signed</p> <p>Baseline Forest Management scenario overview</p> <p>Coarse-Filter Biodiversity</p> <ul style="list-style-type: none"> Natural Range of Variability results 17 Indicator bird species <p>Fine-Filter Biodiversity</p> <ul style="list-style-type: none"> Winter moose habitat Summer moose habitat Marten winter cover <p>Moose Emphasis Forest Management scenario in progress</p> <p>Upcoming Scenario comparison (Baseline vs. Moose Emphasis)</p>																																																																																																																																								

SAC Meeting Date	SAC engagement on the FMP – topic summary
Oct. 7, 2019	Baseline Forest Management Scenario - overview Moose Emphasis Forest Management Scenario overview Scenario comparison (Baseline vs. Moose Emphasis) <ul style="list-style-type: none"> • Harvest block vs. patch • Road reduction • Watershed comparison • Short-list of indicators (to compare scenarios with)
Dec. 10, 2019	Moose Emphasis Forest Management Scenario chosen Forest Management Plan Implementation (in 2-year Operating Plans)

4.6.2. *Stakeholders Values Survey*

During Stakeholder meetings LP asked stakeholder members about their values for forest management. People's values were as diverse as the population itself. It became apparent that generating and documenting forest values and indicators required an assessment of forest values. As a way of appraising these diverse values, a forest values survey was conducted in the fall of 2003 to the Stakeholders Advisory Committee and the public. This same survey was also repeated in 2018 with the Stakeholders Advisory Committee.

The goal of the values survey was to determine those forest values that are most important to the local people. The survey had three objectives:

1. To identify and prioritize stakeholders' forest values in accordance with the Canadian Council of Forest Minister's - Criteria and Indicators Framework (CCFM 2006);
2. To measure stakeholders' basic forest management knowledge; and
3. To measure stakeholders' perceptions of current LP forest management practices.

Once information on forest values were gathered, it was used by the planning team to develop a set of biological and socio-economic indicators for inclusion in the Forest Management Plan. There were a very large number of forest values, including ecological, economic, and social values. The values survey was designed to assess which values were most important to stakeholders and local members of the public. The values survey questionnaire asked respondents to rank several sets of value statements as to their relative importance.

Based on the survey results, the following values statements were deemed to be of most importance to stakeholders and the public:

- Low unemployment in communities and the province,
- Continued existence of small cities/towns across the province,
- Clean water,
- Clean air,
- Healthy soils,
- Healthy populations of wildlife and fish species,
- Meaningful work (work that gives you a sense of purpose),
- Outdoor recreation in wilderness areas (with no logging activity),
- Being able to provide for yourself and your family,
- Having close friends and family, and
- The beauty of natural areas surrounding the community.

Not surprisingly, local employment was found to be an important social value. This is considered an economic value for the purposes of this plan and is highly correlated with harvest volume levels reported on in Chapter 5.

The most important social values identified by respondents, aside from local employment, were outdoor recreation in unharvested areas and the natural beauty or aesthetics surrounding local communities. Recreation opportunities in unharvested areas can be provided by leave areas, buffers, mature and old forest purposefully left unharvested, as well as reserves set aside such as parks and protected areas.

Another social value found in the FML #3 area is historic and archaeological cultural heritage, such as historic trails and sites, and archaeological sites, many of which were produced by Indigenous communities, dating from thousands of years ago to shortly before European contact.

In addition, when asked what forest managers should base their decisions on, most respondents indicated that managers should base decisions on input from scientists and technical specialists, in addition to their own knowledge and input from the public.

The results from the values survey was used as survey questions for the Stakeholders Advisory Committee members in Feb. 2018. Stakeholders could also add other values if they wished. Furthermore, a section was made for open comments in addition to the values (Table 4.24).

Table 4.24 Summarized results from stakeholder surveys in Feb. 2018.

# SAC respondents that agree with value (out of 11)	Forest values significant to stakeholders (repeat of 2004 values survey questions)
9	Low unemployment in communities and the province
9	Healthy Soils
9	Clean air
9	Clean water
8	Healthy populations of fish and wildlife species
8	Being able to provide for yourself and your family
7	Continued existence of small cities/towns across the province
7	Water-related activities (fishing, boating)
7	Outdoor recreation in wilderness areas (no logging activity)
7	Trail-based non-motorized activities
7	Aesthetic activities
7	Camping
6	Gathering
5	Cottaging
3	Trail-based motorized activities
	<i>Additional values</i>
1	Educational Opportunities

# SAC respondents that agree with value (out of 11)	Forest values significant to stakeholders (repeat of 2004 values survey questions)
1	Watershed Management & Sustainable wetland functions/systems
1	Healthy Riparian Management Areas
1	Healthy Sustainable Forest Ecosystems
1	Low Density Road networks
1	Aid in slower run[off] close to heavy rain fall & spring thaw. Reduce water damage to farmer's & municipal runoff, due to major change in landscape.
1	Hunting
2	Soil Erosion
1	Sustainability of shelter belts & riparian zones
1	Moose Management: Protecting their habitat
1	Boreal Forest Wetlands & Peatlands
1	Address Climate change & global Warming
1	Ecosystem: Biodiversity & Morphology
	OPEN COMMENTS
	Appreciate consultation with fish groups and other user groups is encouraged to continue
	Improvement of habitat should be a goal. Maintain [habitat] suggests it doesn't change with time!
	The lack of mature forests seem to be contributing to the mountain shedding rain & spring runoff. Therefore more focus need to be into water retention ponds – which are easily developed using the natural structure of the mountain. The old wagon trails (outfitter/trapped/pioneer) need to be left open for access
	To help prevent infrastructure damage to Rm's, water retention projects need to be built in the higher elevations in the Ducks. Roads & trails in our forested areas to be built & maintained to limit night hunting as much as possible.
	Surface water Management (quality/quantity, Riparian health)
	Ground water preservation (source water aquifer protection)
	Habitat Protection (the corner in ag land)
	If fires are put out, and they are, the creation of a multi-aged forest should be a priority – old forests can burn very quickly.

4.6.3. Stakeholder Input on Forest Management Objectives

Modeling indicators were used to help choose the Preferred Forest Management Scenario (from Chapter 5.) There were approximately 150 different objectives to choose from in the modeling outputs for each scenario (*i.e.* Baseline and Moose Emphasis Scenarios). The Stakeholder's Advisory Committee (SAC) was asked to provide meaningful forest management indicators, based on each person's expertise and opinion. These objectives were used to compare the two forest management scenarios (*i.e.* Baseline and Moose Emphasis). As described in Chapter 5, the Moose Emphasis scenario was chosen over the baseline scenario, with the SAC's input.

4.6.4. Research on the Stakeholders Advisory Committee

The FML #3 Stakeholders Advisory Committee recently participated in a research project on public advisory groups. Amanda Lindgren 2019 master's thesis from the University of Saskatchewan was a national survey of 14 public advisory committees in 2016 that included our FML #3 Stakeholders Advisory Committee. The thesis objectives were to:

- Evaluate the effectiveness of public advisory committees across Canada in advancing contributions to Sustainable Forest Management criteria, as described by the Canadian Council of Forest Ministers (2006)
- Better understand what factors characterize public advisory committees' effectiveness

Abstract (Lindgren 2019)

"Forest Advisory Committees (FACs) in Canada were established in the early 1990s through provincial legislation and market-based forest certification schemes to advance the aims of Sustainable Forest Management (SFM). These committees aimed to incorporate a broad range of stakeholder and rightsholder perspectives and social values into forest management planning processes. There is a need to evaluate the effectiveness of these committees in advancing contributions to SFM, and to better understand what factors characterize their effectiveness. In particular, this research focused on understanding the perspectives of the forest companies and provincial governments that sponsor committees and are responsible for the uptake of committee recommendations in decision-making.

This thesis adopted a mixed methods approach, building on quantitative data collected through a national survey of FACs in 2016. Qualitative methods were used to explore the effectiveness of selected committees, including telephone interviews with committee sponsors and more indepth case study of two committees in Alberta and Saskatchewan. The study found an emphasis on process, rather than outcomes, in participants' characterizations of committee effectiveness. Limited evidence was found of contributions to SFM, though committees [sic] were more influential on outcomes related to local issues such as access and recreation in the forest.

The strategic importance of committees for planning and certification purposes was also revealed. Implications for public forest governance in Canada were considered, along with recommendations moving forward."

Key conclusions on all 14 committees across Canada from Lindgren (2019) include:

1. Process makes perfect for effective FACs. Process was deemed more effective than outcomes. Effectiveness was most often considered in terms of process-related criteria such as responsiveness of the sponsor, having a longstanding and knowledgeable membership, and adequate representation on committees.
2. While Forest Advisory Committees across Canada hold strategic value for sponsors, their influence on forest management outcomes was usually limited to minor, operational changes such as access, recreational uses of the forest, and sharing information about forest-related issues.
3. Forest Advisory Committees did not significantly advance Sustainable Forest Management practices, according to the CCFM 2006 criteria.
4. The Forest Advisory Committees model merits significant revision in light of continuing concerns about the inability of public feedback to influence and improve decision-making for SFM. Participants who were concerned about the limited scope of FACs often commented on the overriding influence of both provincial regulations and forest certification requirements. Even on highly effective committees where members reported high levels of satisfaction, some participants worried about the quality and depth of deliberation on committees, suggesting the need to explore alternative models of public forest governance, including culturally relevant ways to appropriately engage with Indigenous peoples.

Lindgren (2019) concludes by recommending improving existing committee processes by:

- including procedural improvements such as recruitment and training of members,
- reviewing terms of reference regularly
- encouraging stronger relationships between committee members and broader stakeholder groups
- greater focus on learning outcomes
- building meaningful relationships
- supporting deliberation rather than consensus

Two other research projects that the FML #3 Stakeholders Advisory Committee has previously participated in includes:

1. Parkins *et al.* 2006 entitled "Public Participation in Forest Management: Results from a National Survey of Advisory Committees". Abstract is below:

"This report provides a national overview of public advisory committees in the forest sector. Descriptive statistics were tabulated for two surveys: one directed to the chairs of advisory committees (n = 101), and the other to the advisory committee members (n = 1079). The study provides insight into public representation, the values of committee members, the role and functioning of advisory committees, and general levels of satisfaction with committee processes. Although there are many regional variations, the results reported here suggest that committee members are generally satisfied with their experiences with these advisory committees. Ongoing challenges for many committees, identified by

respondents, include the provision of timely and diverse sources of information, adequate public representation (especially Aboriginal involvement), and group processes associated with consensus building and decision making. The report concludes with suggestions aimed at improving the overall effectiveness of advisory committees in the forest sector."

2. McGurk (2003) completed a master's thesis at the University of Manitoba that focused on the three forest advisory committees in Manitoba, which included FML #1 Tembec - Pine Falls; FML #2 Tolko - The Pas, and FML #3 Louisiana-Pacific Canada Ltd. Abstract is below:

"Forest management in Canada is evolving from being largely bilateral and closed to being more inclusive and open. In an effort to test new approaches to public participation, many forest products companies have established advisory committees. Since there is little empirical evidence documenting advisory committee processes, our purpose was to determine the strengths and weaknesses of such processes. This was achieved by assessing the advisory committees of three major forest products companies in Manitoba, Canada, responsible for managing over 5 million hectares of productive forest. Our approach was inductive and qualitative, involving standardized, semi-structured interviews with committee members. Results coalesce around both process and outcome strengths and weaknesses, such as multiple involvement techniques, information sharing and communication, and breadth of participant learning. While the results are mixed, the study confirms that advisory committees have promise as a method of actively involving a select group of stakeholders in forest management."

4.7. PUBLIC INFORMATION SHARING AND ENGAGEMENT

The general public is another important group that has influence over the management of publicly owned provincial forest.

4.7.1. Open Houses

Combined Two-year operating plan and 20-year Forest Management Plan open houses for the public were held during the last week of January 2019. Four open houses were in communities across Forest Management Licence #3 (Figure 4.2).

Forest Management Open House

**Help guide the 2020-2040 strategic Forest
Management Plan and the two-year Operating Plan
for the Duck Mountain Provincial Forest and
surrounding area**

ROBLIN
Community Center – Mon. Jan. 28th (6 – 8 pm)

GRANDVIEW
Legion Hall –Tues. Jan. 29th (6 – 8 pm)

ETHELBERT
Drop in Center (#9, 1st Street NE) –Wed. Jan. 30th (6 – 8 pm)

SWAN RIVER
Swan Lake Watershed Conservation District office - Thurs. Jan. 31st
(6 – 8 pm)

refreshments provided

For further information call Val at 1-204-734-4102
or email paul.leblanc@lpcorp.com

Figure 4.2 Open house advertising for public input.

A total of 18 persons attended the four open houses. Input was generally concerns of an operational nature, such as trapper's trails. No strategic input on the 20-year FMP was given.

4.7.2. *Public Values*

Public values were surveyed in a formal survey questionnaire (Appendix 2) in combination with the Stakeholder Advisory Committee. The administration of the questionnaire and resulting analysis are exploratory in nature. No formal statistical analysis had been performed. However, basic descriptive statistics were used to draw conclusions from the survey data. The intent of the survey was to narrow down the large body of human values-related information so that forest management could focus on values and incorporate them in the Forest Management Plan.

4.7.3. *Moose*

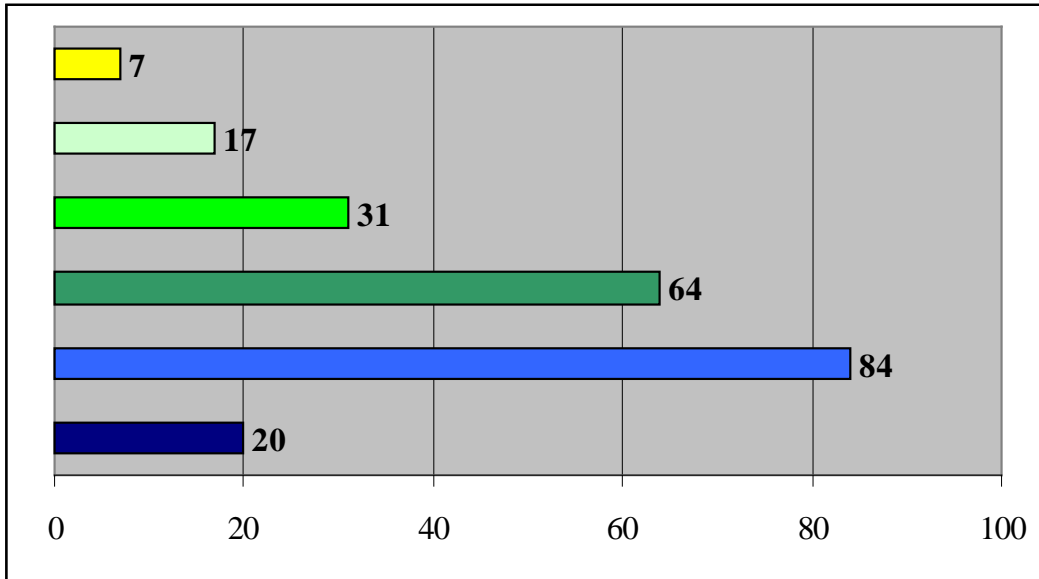
Moose Population decline is a public concern, since the public value moose as a species. The general public has noticed significantly less moose sightings and are legitimately concerned about reduced moose populations. The moose closure in the local area is accepted, but further confirms that there is a problem, leading to additional concern.

Non-consumptive public enjoy seeing moose. Observing moose during travel makes a trip more enjoyable. Some people will drive through the Duck Mountain or Riding Mountain in the hopes of seeing some wildlife during their trip. Seeing other wildlife species is also enjoyable.

Hunting of moose is on hold to assist with recovery of moose populations. The conservation closure is in effect until the provincial government deems the moose population sufficient to sustain a small harvest.

4.7.4. Public Involvement in Forest Management

Many people felt that public involvement in planning was very important. The majority of those surveyed felt that the public should act as full and equal partners with government and industry in setting management goals (Figure 4.3). The second-most opinion was that the public should serve on advisory boards that review and comment on management goals.



LEGEND







	Have no role; let government and industry professionals set all management goals and priorities.
	Let the professionals set goals and priorities and then inform the public about their decisions.
	Suggest goals and let government and industry resource professionals decide their priority.
	Serve on advisory boards that review and comment on management goals.
	Act as full and equal partners with government and industry professionals, setting management goals.
	Set management goals and have government and industry resource professionals carry them out.

Figure 4.3 Survey responses (out of 196) regarding the role of the public in setting management goals and priorities.

4.7.5. *Company Characteristics*

Public survey respondents felt that LP should be environmentally and socially responsible as a company (Figure 4.4). These responses suggest that environmental values are extremely important to the public, in addition to social and economic values. This Forest Management Plan provides many examples of effort and dedication to social and environmental responsibility, as well as significant investments in research and development.

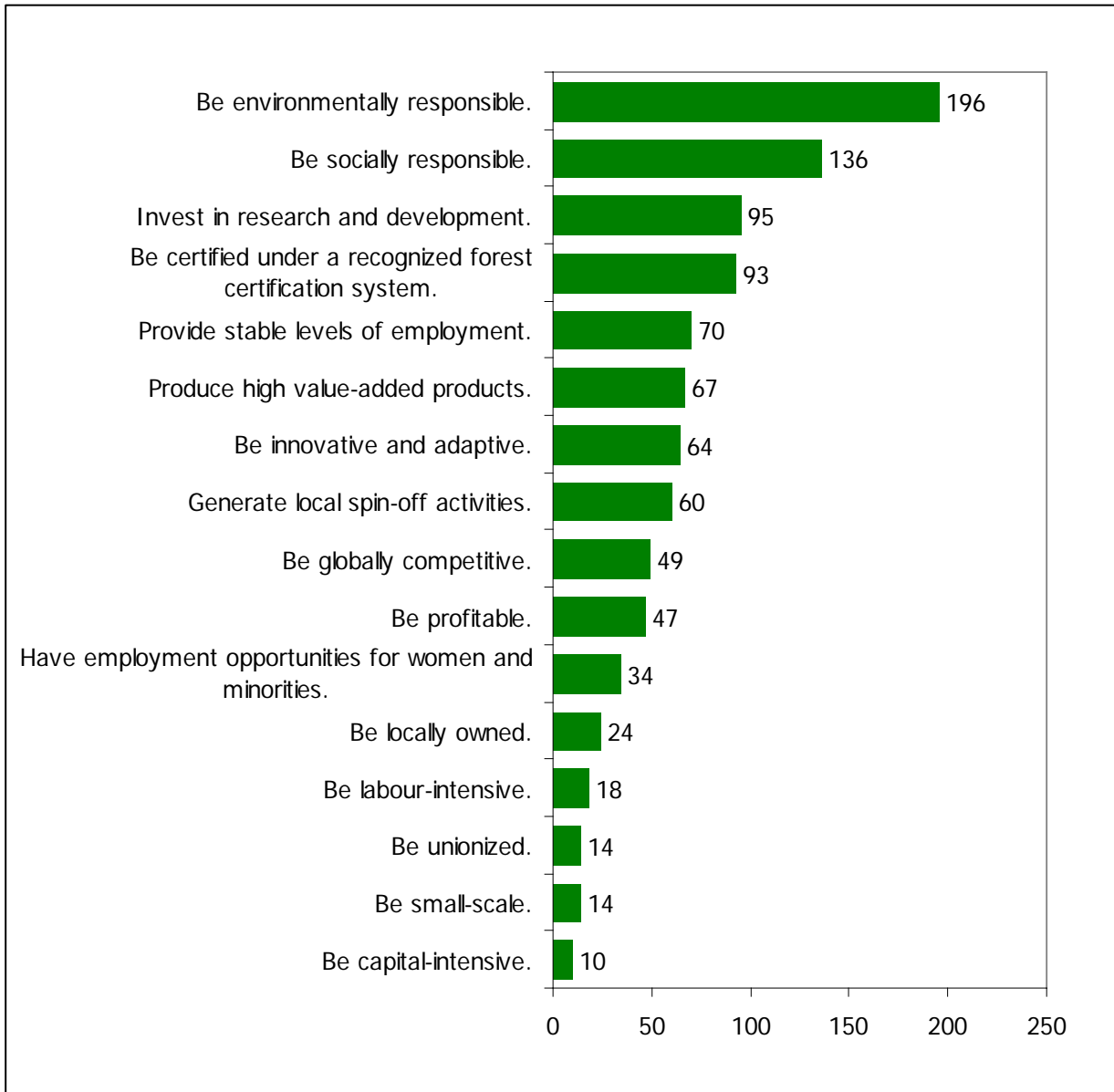


Figure 4.4 Characteristics that stakeholders felt that LP should display as a company. Numbers associated with each column represent the number of respondents (out of 196) who felt that a given priority was important.

4.7.6. Value Types Categorized

The types of values of surveyed from the public and stakeholders was summarized in Table 4.25.

Table 4.25 Summarized value types and values from survey.

Value Types
Community Values
*Continued existence of small cities/towns across the province
*Low unemployment in communities and the province
Outdoor recreation opportunities close to communities
Ecological / Environmental Values
*Clean water
*Clean air
*Healthy populations of wildlife and fish species
Employment and Work Values
*Meaningful work (work that gives you a sense of purpose)
Job security
Workplace where there is a sense of community
Recreation / Outdoor Experience Values
Outdoor recreation in wilderness areas (no logging activities)
Outdoor recreation in developed natural environments (e.g. campgrounds, lakes or beaches with facilities)
Having a sense of place (getting to know and feel at home in a particular natural environment)
Cultural / Spiritual Values
*Being able to provide for yourself and your family
*Having close friends and family
*Spending time outdoors in natural places
Aesthetics / Visual Values
*The beauty of natural areas surrounding your community
The beauty of your community
The beauty of natural areas in which people recreate

* denotes that the statement's median was 4 or 5 "extremely important" out of 5

4.7.7. Recreational Activities

The top recreational activities in the Duck Mountain (based on 196 responses) are listed in Table 4.26. Wildlife viewing is obviously very important to almost everyone.

Table 4.26 Top recreational activities.

Activity	Number of Respondents
1. Wildlife Viewing	194
2. Scenic Viewing	193
3. Walking	184
4. Gathering plants, berries, etc.	155
5. Swimming	151
6. Freshwater sport fishing	142
7. Picnicking	136
8. Canoeing	133
9. Jogging/Running	132
10. Touring (for scenery)	122
11. Beach activities	122
12. ATV (four-wheeling) use	118
13. Snowmobiling	117
14. Hunting for food	115
14. Other boating	115
16. Day Hiking	101
17. Drawing/Painting/Photography	97
18. Visiting Summer Cottage	90
19. Car Camping (tent)	90
20. Hunting Deer	90

4.8. CHANGES AND IMPROVEMENTS FROM ALL SOURCES OF INPUT

Changes and improvements were made to the Forest Management Plan, based on input from Indigenous communities, stakeholders, the public, and the FMP planning team. These changes and improvements are sub-divided into two categories:

- 1) landscape-level broad changes; and,
- 2) operational-level specific changes.

4.8.1. *Landscape-level Changes*

Landscape-level items are generally broad in nature. Typically, these suggested changes apply to the entire FML #3 land base. The sub-sections below outline landscape-level changes.

4.8.1.1 *Moose Habitat and Use*

Moose habitat and populations were consistently mentioned as a concern from Indigenous communities, stakeholders, public, as well as the Forest Management Plan team.

Therefore, moose habitat was addressed in a very significant way in the Forest Management Plan. Moose habitat evaluation models were developed during the FMP development, for both winter moose habitat and summer moose habitat.

Winter moose habitat was quantified in an analysis recently commissioned by Wildlife and Fisheries Branch. LP applied the winter moose habitat relationships to the land base for each scenario. This created a tool to evaluate winter moose habitat for each scenario at time 0, 10, 20, 30, and 40 years.

Summer moose habitat was estimated based on previous work by the Manitoba Model forest. LP applied the summer moose habitat (food and cover) relationships to the land base for each scenario. This created a tool to evaluate summer moose habitat for each scenario at time 0, 10, 20, 30, and 40 years.

These models were used to enhance moose habitat by spatially arranging forage and cover close to water. In addition, new future road construction was minimized. Moose habitat retention and improvement was an important factor in choosing which one of two forest management scenarios to use as a guide for managing FML #3 over the next 20 years.

4.8.1.2 Roads and Access

Roads and access were concerns for multiple reasons by different groups. The most often mentioned concern was the impact of roads and uncontrolled access on wildlife populations, especially elk and moose. Note that the moose winter habitat model (Zabihi-Seissan 2018) confirmed and quantified how roads are negative for moose probability of use.

Therefore, roads were spatially controlled to reduce their length in two stages. Stage one was tracking the amount (km) of new roads needing to be built in the PatchWorks model in association with proposed future harvesting. An active roads target was set to minimize the amount of road while still harvesting the same amount of softwood and hardwood. This reduced the length of future roads needing to be built, compared to not having any road target or indicator in the PatchWorks model.

Stage two was reducing the total length of new roads even further within the Moose Emphasis scenario. The Moose Emphasis scenario's 25% reduction in new future roads is attributable to:

- Larger patch size distribution than the Baseline scenario;
- Re-using existing roads more often, thus reducing the length of new roads needed; and,
- A very small potential amount of volume (above the existing provincial AAC) was not scheduled for harvest.

There was also input from some communities to increase access to allow easier hunting of ungulates for food. These communities recommended not to close roads after harvesting. The response was that it is a requirement to keep existing access open. However, all new roads must be closed.

4.8.1.3 Natural Range of Variation and Seral Stages

Natural Range of Variation (NRV) is the emulation of wildfire at the landscape-level. Presentations were made to communities about how wildfire maintains all the seral stages (*i.e.* young, immature, mature, and old forest). Communities easily grasped this concept and related it to their observations of forests. Therefore, there was strong agreement to pursue NRV targets in FML #3.

There were concerns expressed over the need to maintain areas of mature forest at all times in the future. Others specifically mentioned maintaining old forest. Natural Range of Variation was set up in the PatchWorks model to both track seral stages and to target retention of both mature and old forest across the landscape.

4.8.1.4 Water Quantity and Watersheds

Potential effects of forest management activities on water resources were discussed. Comments related to water included:

- future water quality, especially in downstream and agricultural areas
- peak flows and run-off events in the future
- effectiveness of riparian management practices

Water quantity concerns were addressed in the planning process by setting a target within Patchworks to constrain forest harvest levels, at a watershed scale, to less than 30% of a watershed in a harvested state at any time. This maximum harvest level was agreed upon by Department of Fisheries and Oceans and LP during the approval process for the FML #3 10-year Forest Management Plan (1996 to 2006).

4.8.1.5 Patch Size and Fragmentation

Input on forest fragmentation included:

- have variable cutblock sizes
- avoid forest fragmentation
- need larger cut blocks with more adjacency area
- maintain 100 ha blocks with larger disturbance patches

In order to minimize effects of harvest activities on forest fragmentation, indicators were developed in Patchworks that would report on cutblock size and patch size distribution. This also relates to Natural Range of Variation, and a wider patch size distribution more closely emulate natural disturbances. Therefore, all forest management scenarios had targets for a range of cutblock and patch sizes, instead of having the same size everywhere. The wider distribution of cutblock sizes reduces fragmentation, emulates natural disturbance, and conserves coarse-filter biodiversity at the landscape level.

4.8.1.6 Forest Cover Group

There was a strong consensus to keep the existing representation of cover groups found in the Duck Mountain as a desired component of future forests. Many participants communicated that maintaining biodiversity was very important, and variability of forest types was an important component of biodiversity. Therefore, a target was set to maintain the cover type distribution of (S) Softwood, (M) softwood-mixed wood, (N) hardwood-mixed wood, and (H) Hardwood, through time. Cover group distribution was also added as an output indicator in the PatchWorks model.

4.8.1.7 Species at Risk and birds

When bird species-at-risk were mentioned, most groups agreed that species at risk birds were important. There is only one bird species-at-risk that has sufficient field observations to create a habitat model in FML #3 – Canada Warbler (CAWA). Therefore, LP utilized these data to quantify Canada warbler habitat.

Birds in general were deemed important by most groups, even if the birds were not listed species-at-risk. Indicator birds were used to represent niches in forest ecosystems (*e.g.* old conifer forest, young hardwood, mixed ages, mixed hardwood and softwood, *etc.*).

4.8.1.8 Marten

Marten are the highest contributing species to local trapper's income and were communicated as an important furbearer. Therefore, the aspatial winter cover Habitat Suitability Index model for marten winter cover, developed by Manitoba Forestry Wildlife Management Project was utilized. This model described marten winter habitat quality and quantity.

4.8.1.9 Wildlife Habitat in General

Numerous comments were received through the public involvement and consultation activities relating to the maintenance of wildlife habitat. Some people referred to wildlife habitat in general, while others specified bird habitat or habitat for an individual species (moose, elk, beaver, loons, otters, geese, osprey, eagles, herons and others were mentioned). LP's strategies for maintaining biodiversity, which includes maintaining the necessary habitats for viable wildlife and plant populations, is achieved through planning at both a coarse and fine-filter level. A coarse-filter approach involves the maintenance of ecosystems across the forested landscape.

4.8.1.10 Wildlife Populations

Public input on wildlife populations included:

- Maintain wildlife populations.
- Maintain populations of specific species – beavers, predators (wolf, cougar, bears), water birds, ungulates.
- Reduce beaver populations; others stated we should increase beaver populations.

LP explained to the various groups and individuals that we cannot directly influence wildlife populations. However, habitat availability and habitat quality can be improved through forest management practices.

4.8.1.11 Economic

Public input on economics included:

- have a sustainable harvest level
- jobs and economic benefits for Manitobans
- long term economic viability

Harvesting a consistent amount of wood annually, provides a consistent amount of employment and spin-off benefits.

4.8.2. Operational-level specific changes

Operational-level items are specific in nature and typically apply to a small area. The following sub-sections describe operational-level input and changes.

4.8.2.1 Connectivity

Connectivity as a concept was endorsed by several groups. Habitat corridors and connectivity were deemed as desirable. In addition, there was a specific mention of creating connectivity between the Duck Mountain and Riding Mountain National Park.

Larger patch sizes help maintain connectivity, in addition to operational planning efforts.

4.8.2.2 Water Quality

Water quality concerns have been mentioned by multiple sources. Water quality in the forested portion of FML #3 is addressed through operational practices including riparian buffers and low-impact stream crossings.

4.8.2.3 Recreation and Trails

Public input on recreation included:

- Maintain wildlife habitat to ensure bird viewing opportunities exist
- Hiking and skiing opportunities, but no snowmobiles
- promote ecotourism opportunities

Concerns over continued availability of recreational opportunities in the Duck Mountain Provincial Forest were expressed. Recreational access is highly dependent upon the trail system. LP maintains existing trail networks at the operational level by re-establishing or restoring trails if affected by roads or harvest blocks. Alternatively, trails are buffered and avoided, at the operational scale. LP addresses concerns of the individual stakeholders (*e.g.* snowmobile club) directly when making these decisions.

4.8.2.4 Aesthetics Changes

Input on aesthetics included:

- maintain aesthetic values
- [need places where] there is a sense of solitude
- no evidence of human activity
- feel like I'm the first person to ever be there
- maintain aesthetic view [visual quality] of Duck Mountains from Highway #10

Operational harvest practices and operating guidelines are designed to minimize adverse visual impacts. This includes line-of-sight concerns and areas excluded from harvest activities. The backcountry zone and recreation area of the DMPP provide opportunities for solitude and minimal disturbance from resource development activities.

4.8.2.5 Soil

Input on soil included:

- Control soil erosion
- Have healthy soils
- maintain soil nutrient levels

Soil erosion control is addressed at an operational level. Road building and stream crossing Standard Operating Guidelines, combined with staff and contractor training provide a high level of soil erosion control.

4.9. CONCLUSIONS

The information sharing and engagement efforts from 2017 to present are a good start. Indigenous community dialogue does not end with the Forest Management Plan (FMP) submission (Dec. 2019). Furthermore, community dialogue also does not end by FMP approval by the province of Manitoba. Information sharing and engagement efforts will continue.

4.10. LITERATURE CITED

- Canadian Council of Forest Ministers (CCFM). 2006.** Criteria and Indicators of Sustainable Forest Management in Canada: national status 2005. Canadian Forest Service, Ottawa, Canada. http://www.ccfm.org/pdf/C&I_e.pdf
- Lindgren, A. 2019.** Exploring the Effectiveness of Canadian Forest Advisory Committees for Advancing Sustainability. Thesis for a Degree of Master of Environment and Sustainability. School of Environment and Sustainability, University of Saskatchewan, Saskatoon. 139 pp. <https://harvest.usask.ca/handle/10388/12329>
- Manitoba Conservation. 2007.** Manitoba's Submission Guidelines for Twenty Year Forest Management Plans. Manitoba Conservation. Edited by Forestry Branch. 200 Saulteaux Crescent, Winnipeg, MB. 24 pp.
- McGurk, B., A. J. Sinclair, and A. Diduck. 2006.** An assessment of stakeholder advisory committees in forest management: case studies from Manitoba, Canada. *Society & Natural Resources* 19(9): 809–826. https://umanitoba.ca/institutes/natural_resources/canadaresearchchair/thesis/bmcgurk%20masters%20thesis%202003.pdf
- Parkins, J.R., Nadeau, S., Hunt, L., Sinclair, J., Reed, M., and S. Wallace. 2006.** Public Participation in Forest Management: Results from a National Survey of Advisory Committees. Information Report NOR-X-409 Northern Forestry Centre, Edmonton, AB. 64 pp.
- Zabihi-Seissan, S. 2018.** Validation of the Moose Habitat Resource Selection Function using Forest Management Data in the Duck Mountain Area. Prepared for the Government of Manitoba. October 31, 2018. 37 pp.

4.11. APPENDICES

APPENDIX 1. FMP LETTERS SENT TO ALL COMMUNITIES

APPENDIX 2. VALUES SURVEY QUESTIONNAIRE AND RESULTS

APPENDIX 1. FMP LETTERS SENT TO ALL COMMUNITIES

FMP Letter #1 – sent Jan. 31, 2018



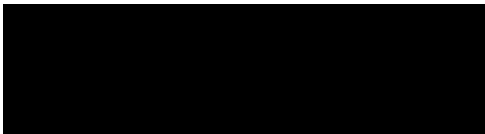
Attention:

Louisiana-Pacific Swan Valley would like to extend to your community the opportunity to contribute in the development of the next 20-year forest management plan for Forest Management License #3. The new plan will chart the path of forest management in the Duck Mountains and surrounding areas from 2020 until 2039.

The planning team, consisting of staff from both Louisiana-Pacific Canada Ltd. and Manitoba Sustainable Development, would like to incorporate traditional knowledge into the development of this plan. We would like to incorporate values and land use information specific to your community into the planning, modelling and decision-making process.

This letter is being sent out as a follow up to the information bulletin that you have been sent from the Manitoba Government, Forestry and Peatlands Branch. Louisiana-Pacific Swan Valley will be contacting your office in the next few weeks with the intent of setting up a meeting with your community.

Thank you,



Todd Yakielashek
Area Forest Manager
Louisiana-Pacific Canada Ltd.
Swan Valley Forest Resources Division
204-281-2549



October 31, 2018

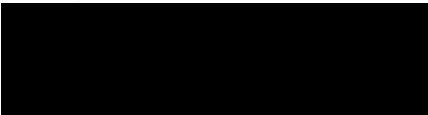
Forest Management Plan update for Forest Management License #3

Louisiana-Pacific Swan Valley in conjunction with Manitoba Sustainable Development will be moving on to the next phase of forest management plan development in December 2018. We are near completion of summarizing the current forest condition of the forest management license area. No decisions regarding long term forest management have been made as of yet, but we are planning to start adding forest management objectives in December of this year. We will be developing objectives to help guide the management of key forest values, for example, moose habitat in the forest management license area. Your continued participation is appreciated. I will be reaching out to you by phone soon after you receive this letter to further discuss our next planning phase.

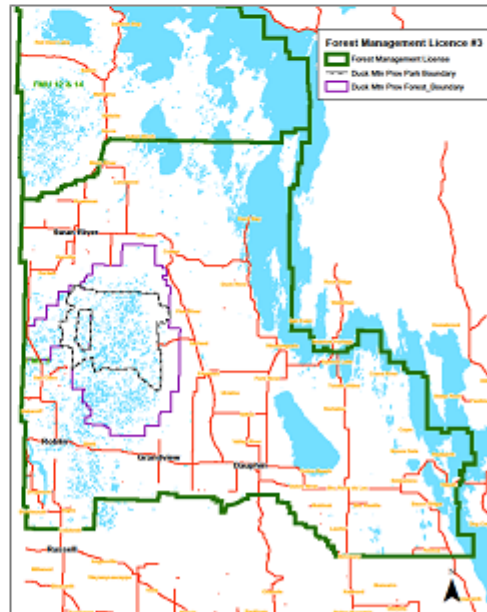
Since January of this year we have received some excellent information regarding forest land use and values, as well as traditional and local knowledge that will help guide plan development. Thank you for this! We will continue to engage and provide opportunities to share information through the next phase of plan development. We encourage the sharing of information as early as possible so there is ample time to discuss and incorporate it. We will continue engagement and information sharing through all phases of plan development up until the plan is submitted.

If you have any questions, please feel free to contact me at your convenience.

Thank you,



Todd Yakielashek
Area Forest Manager
Louisiana-Pacific Canada Ltd.
Swan Valley Forest Resources Division
1-204-281-2549



LOUISIANA-PACIFIC CORPORATION

558 3rd Avenue South Box 998 Swan River, MB RoL 1Z0 T 204.734.4102 F 204.734.3646 WWW.LPCORP.COM





June 21, 2019

Forest Management Plan update for Forest Management License #3 (FML #3)

This letter is being sent as a follow up to previous letters regarding Louisiana-Pacific's 20-year forest management plan. The current forest condition in FML #3 has been summarized which has allowed us to move forward and determine a baseline for our computer modeling. This baseline takes information about the current forest and models it forward to see how the forest will change over time. During this process different objectives and targets are added or removed in the model to see how the forest landscape responds. The goal of this process is to incorporate forest management practices which will keep the forest in its natural condition over time.

With this baseline completed we can move forward to add management objectives to see how key forest values such as moose habitat respond. We would like to extend the opportunity to your community to review the baseline and add traditional and local knowledge in the next phase of plan development. We encourage the sharing of information as early as possible, so it can be discussed and incorporated. We will continue engagement and information sharing through all phases of plan development.

If you have any questions, please feel free to contact me at your convenience.

Thank you,



Todd Yakielashek
Area Forest Manager
Louisiana-Pacific Canada Ltd.
Swan Valley Forest Resources Division
204-281-2549

LOUISIANA-PACIFIC CORPORATION

558 3rd Avenue South Box 998 Swan River, MB R0L 1Z0 T 204.734.4102 F 204.734.3646 WWW.LPCORP.COM

BUILD WITH US