

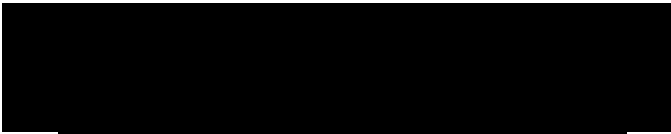
Attention:

Louisiana-Pacific Swan Valley would like to extend to your community the opportunity to contribute in the development of the next 20 year forest management plan for Forest Management License #3. The new plan will chart the path of forest management in the Duck Mountains and surrounding areas from 2020 until 2039.

The planning team, consisting of staff from both Louisiana-Pacific Canada Ltd. and Manitoba Sustainable Development, would like to incorporate traditional knowledge into the development of this plan. We would like to incorporate values and land use information specific to your community into the planning, modelling and decision making process.

This letter is being sent out as a follow up to the information bulletin that you have been sent from the Manitoba Government, Forestry and Peatlands Branch. Louisiana-Pacific Swan Valley will be contacting your office in the next few weeks with the intent of setting up a meeting with your community.

Thank you,



Todd Yakielashek
Area Forest Manager
Louisiana-Pacific Canada Ltd.
Swan Valley Forest Resources Division
204-281-2549

October 31, 2018

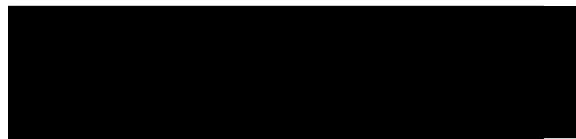
Forest Management Plan update for Forest Management License #3

Louisiana-Pacific Swan Valley in conjunction with Manitoba Sustainable Development will be moving on to the next phase of forest management plan development in December 2018. We are near completion of summarizing the current forest condition of the forest management license area. No decisions regarding long term forest management have been made as of yet, but we are planning to start adding forest management objectives in December of this year. We will be developing objectives to help guide the management of key forest values, for example, moose habitat in the forest management license area. Your continued participation is appreciated. I will be reaching out to you by phone soon after you receive this letter to further discuss our next planning phase.

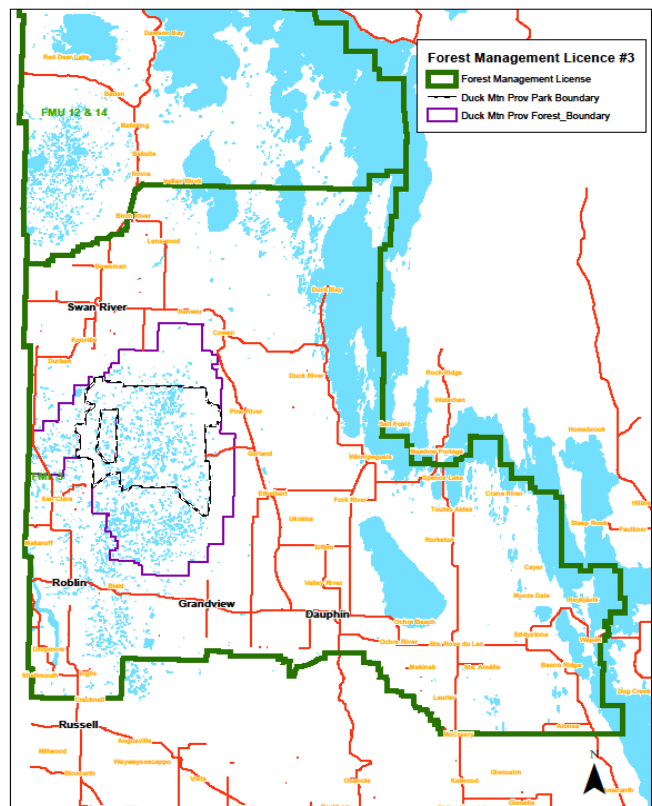
Since January of this year we have received some excellent information regarding forest land use and values, as well as traditional and local knowledge that will help guide plan development. Thank you for this! We will continue to engage and provide opportunities to share information through the next phase of plan development. We encourage the sharing of information as early as possible so there is ample time to discuss and incorporate it. We will continue engagement and information sharing through all phases of plan development up until the plan is submitted.

If you have any questions please feel free to contact me at your convenience.

Thank you,



Todd Yakielashek
 Area Forest Manager
 Louisiana-Pacific Canada Ltd.
 Swan Valley Forest Resources Division
 1-204-281-2549





June 21, 2019

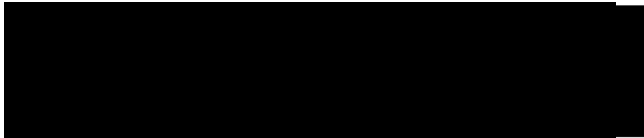
Forest Management Plan update for Forest Management License #3 (FML #3)

This letter is being sent as a follow up to previous letters regarding Louisiana-Pacific's 20-year forest management plan. The current forest condition in FML #3 has been summarized which has allowed us to move forward and determine a baseline for our computer modeling. This baseline takes information about the current forest and models it forward to see how the forest will change over time. During this process different objectives and targets are added or removed in the model to see how the forest landscape responds. The goal of this process is to incorporate forest management practices which will keep the forest in its natural condition over time.

With this baseline completed we can move forward to add management objectives to see how key forest values such as moose habitat respond. We would like to extend the opportunity to your community to review the baseline and add traditional and local knowledge in the next phase of plan development. We encourage the sharing of information as early as possible, so it can be discussed and incorporated. We will continue engagement and information sharing through all phases of plan development.

If you have any questions please feel free to contact me at your convenience.

Thank you,



Todd Yakielashek
Area Forest Manager
Louisiana-Pacific Canada Ltd.
Swan Valley Forest Resources Division
204-281-2549