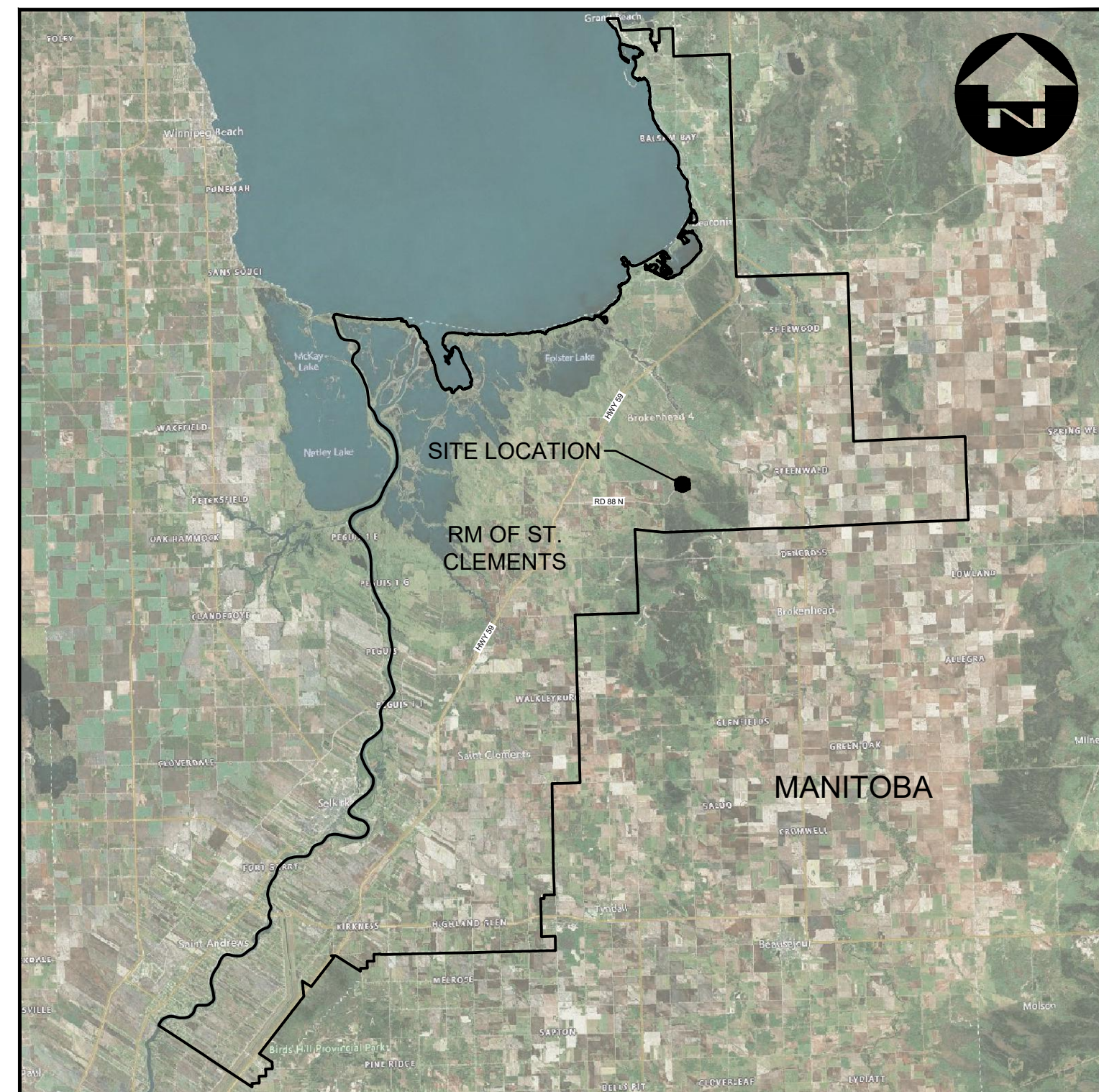




RURAL MUNICIPALITY OF ST. CLEMENTS

LIBAU LANDFILL - LANDFILL CELL 2 DESIGN

REV E - IFC - BERM & ANCHOR TRENCH ADJUSTMENTS



PROJECT LOCATION PLAN
NOT TO SCALE



SITE PLAN
1:3500

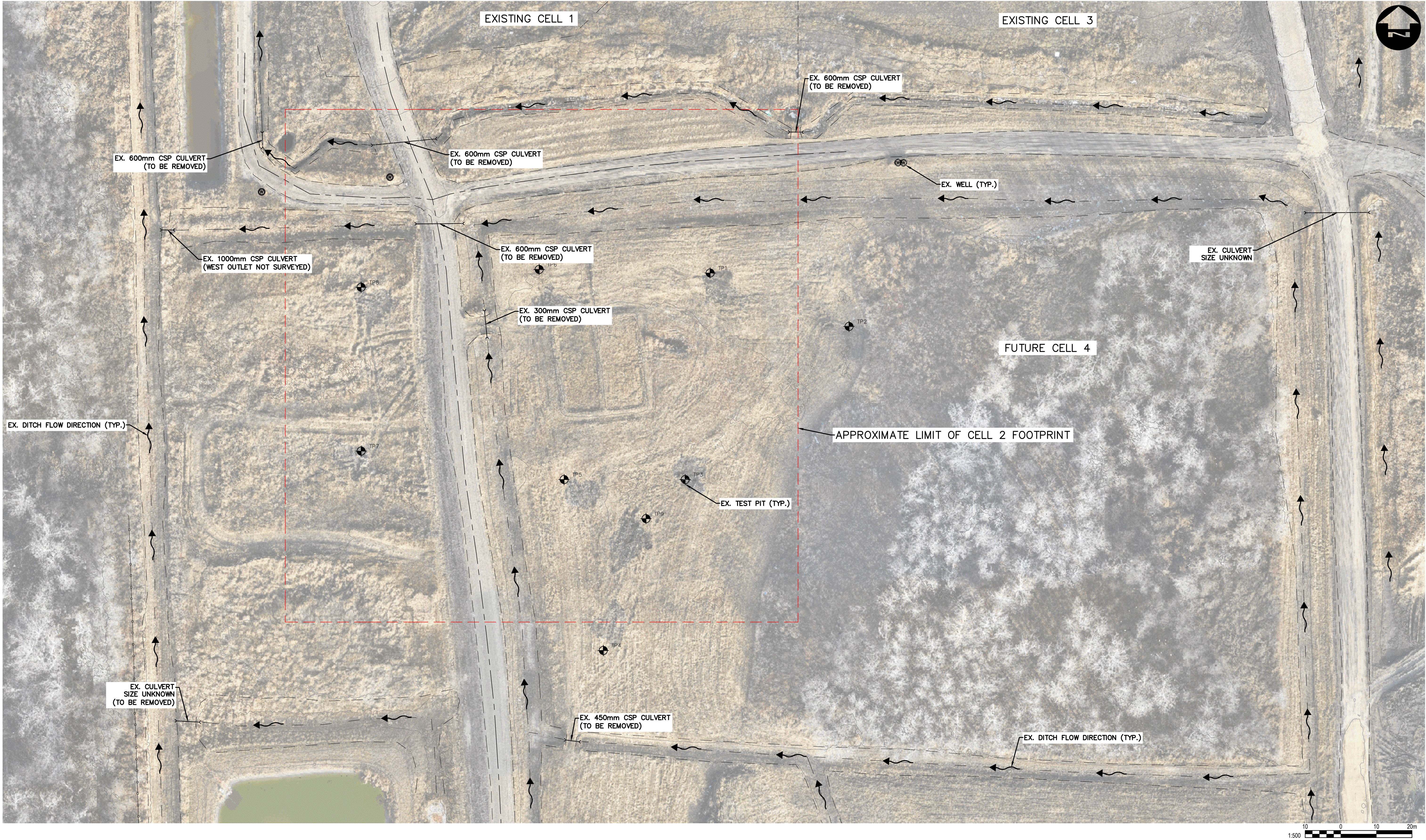
DRAWING INDEX	
DWG.	DESCRIPTION
CIVIL	
C00	COVER PAGE
C01	EXISTING CONDITIONS SITE PLAN
C02	PROPOSED TOP OF LINER & SITE CONDITIONS PLAN
C03	PROPOSED TOP OF LEACHATE COLLECTION SYSTEM PLAN
C04	LANDFILL CELL 2 SECTIONS
C05	ROADWAY PROFILES & SECTIONS
C06	STORMWATER DITCHING PROFILES & SECTIONS
C07	MISCELLANEOUS DETAILS

DILLON PROJECT: 24-9200
DATE: JUNE 26, 2025

BENCHMARKS				
ID	NORTHING (m)	EASTING (m)	ELEVATION (m)	DESCRIPTION
CP1	5575234.947	671644.420	225.347	10mm REBAR, OFF NORTHEAST CORNER OF BUILDING



FILENAME: C:\P\WORKING DIRECTORIES\PROJECTS 2024\DILLON_43905\INSTR251\249200-02-XSITE-CON.DWG PLOTTED BY: SFEED, BRAD
PLOT DATE: 2025-06-26 11:16:26 AM PLOT SCALE: 1:25.4 PLOT STYLE: DILLON-STANDARD.CTB



Conditions of Use

Verify elevations and/or dimensions on drawing prior to use.
Report any discrepancies to Dillon Consulting Limited.

Do not scale dimensions from drawing.

Do not modify drawing, re-use it, or use it for purposes other than those intended at the time of its preparation without prior written permission from Dillon Consulting Limited.

ISSUED FOR CONSTRUCTION



E	IPC - BERM & ANCHOR TRENCH ADJUSTMENTS	2025-06-26	MP		
D	ISSUED FOR CONSTRUCTION	2025-06-06	MP		
C	ISSUED FOR TENDER	2025-03-28	MP		
B	ISSUED FOR 90% DESIGN REVIEW	2025-03-07	MP		
A	ISSUED FOR 50% DESIGN REVIEW	2025-02-07	MP		
No.	ISSUED FOR	DATE	BY		

DESIGN	SS	REVIEWED BY	MP
DRAWN	BS	CHECKED BY	SS
DATE	JUNE 2025		
SCALE	1:500		

RURAL MUNICIPALITY OF ST. CLEMENTS - LIBAU LANDFILL
LANDFILL CELL 2 DESIGN

EXISTING CONDITIONS SITE PLAN

PROJECT NO.
24-9200

SHEET NO.

C01

NOTES:

- ALL DIMENSIONS ARE IN METERS UNLESS OTHERWISE NOTED.
- A DEWATERING SYSTEM MIGHT BE CONSIDERED DURING EARLY STAGES OF CONSTRUCTION.

TIE IN PROP. 7.0m WIDE PERIMETER ACCESS ROAD TO EX. PERIMETER ROAD C/L ELEVATION ~ 224.59

PROP. 3.0m WIDE TEMPORARY CONSTRUCTION BERM. TO BE USED TO PREVENT RUN-ON DURING CONSTRUCTION. ONCE LINER IS PLACED, BERM TO BE REMOVED AND LINER SYSTEM TIED TO EXISTING CELL 1 LINER. EXISTING LINER ELEVATIONS AND LOCATION ARE UNKNOWN.

EX. DITCH TO BE RAISED/RE-GRADED IN OPPOSITE DIRECTION. TO FLOW EAST. MIN. SLOPE 0.1%

REGRADE EX. DITCH AS REQUIRED FOR CULVERT D/S INVERT AND POSITIVE DRAINAGE TO THE NORTH

PROP. 26.7m - 750mm CSP CULVERT
SLOPE = 0.26%
U/S INVERT = 224.900
D/S INVERT = 224.830

PROP. 3.0m WIDE PERIMETER BERM

REVISION SCHEDULE		
REVISION NUMBER	REVISION DESCRIPTION	REVISION DATE
1	BERM TOP WIDTH CHANGED FROM 2.0m TO 3.0m BASED QN PROVINCIAL REVIEW	2025-06-26

PROP. 6.0m WIDE TEMPORARY ACCESS ROAD
SEE PROFILE "H" AND TYPICAL SECTION ON SHEET C05

ELEVATIONS REPRESENT GEOTEXTILE CUSHION ON 60 MIL HDPE LINE (TOP OF MIN. 1.0m COMPACTED CLAY LINER)

PROP. 225.0m - 2m WIDE DITCH
SLOPE = 0.05%
SEE PROFILE "K" ON SHEET C06

PROP. BERM TO DIRECT FLOW FROM THE SOUTH TO THE WEST INSTEAD OF NORTH

PROP. HDPE LEACHATE COLLECTION MH2B
NORTH INVERT = 221.89

PROP. 13.9m - 750mm CSP CULVERT
MIN. SLOPE = 0.05%
U/S INVERT = 223.463
D/S INVERT = 223.456
SEE TYPICAL CULVERT BACKFILL DETAIL ON SHEET C06

PROP. 8.5m - 750mm CSP CULVERT
MIN. SLOPE = 0.05%
U/S INVERT = 223.419
D/S INVERT = 223.412
(LOCATION TO MATCH EX. CULVERT LOCATION)

PROP. 75.5m - 5m WIDE DITCH
SLOPE = 0.05%
SEE PROFILE "K" ON SHEET C06

REGRADE EX. DITCH AS REQUIRED FOR CULVERT D/S INVERT AND POSITIVE DRAINAGE TO THE NORTH

PROP. 3.0m WIDE PERIMETER BERM

TIE TO EX. GROUND AT MAX. 3:1 (TYP.)

PROP. 7.0m WIDE PERMANENT ACCESS ROAD
SEE PROFILE "G" AND TYPICAL SECTION ON SHEET C05

PROP. 200mm BLIND FLANGE

PROP. 200mm BLIND FLANGE

PROP. 200mm SDR11 HDPE PERFORATED LEACHATE COLLECTION PIPE
LENGTH = 121m

PROP. 200mm SDR11 HDPE PERFORATED LEACHATE COLLECTION PIPE
LENGTH = 121m

PROP. 200mm SDR11 HDPE SOLID RISER PIPES. SEE DETAIL ON SHEET C07

PROP. 200mm SDR11 HDPE SOLID LEACHATE COLLECTION PIPE
LENGTH = 16m

PROP. 200mm SDR11 HDPE SOLID RISER PIPES. SEE DETAIL ON SHEET C07

PROP. 200mm SDR11 HDPE SOLID LEACHATE COLLECTION PIPE
LENGTH = 16m

PROP. HDPE LEACHATE COLLECTION MH2A
NORTH INVERT = 221.89

FILL AREAS TO ENSURE POSITIVE DRAINAGE OVER ROADWAY

TIE IN PROP. 7.0m WIDE PERIMETER ACCESS ROAD TO EX. PERIMETER ROAD C/L ELEVATION ~ 224.60

Conditions of Use

Verify elevations and/or dimensions on drawing prior to use. Report any discrepancies to Dillon Consulting Limited.

Do not scale dimensions from drawing.

Do not modify drawing, re-use it, or use it for purposes other than those intended at the time of its preparation without prior written permission from Dillon Consulting Limited.

ISSUED FOR CONSTRUCTION



DILLON CONSULTING

DESIGN	SS	REVIEWED BY	MP
DRAWN	BS	CHECKED BY	SS
DATE	JUNE 2025		
SCALE	1:500		

RURAL MUNICIPALITY OF ST. CLEMENTS - LIBAU LANDFILL
LANDFILL CELL 2 DESIGN

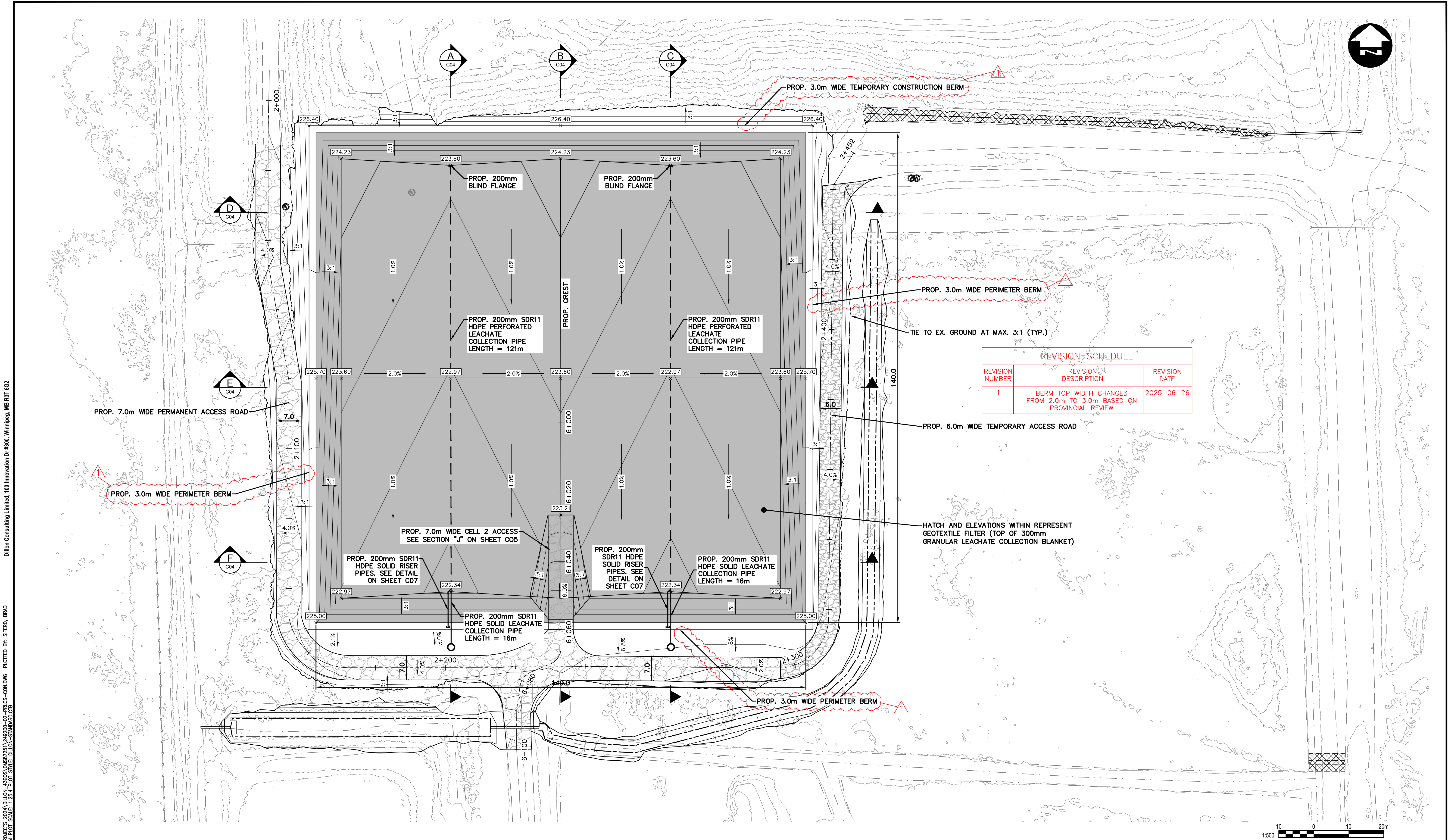
PROJECT NO.
24-9200

PROPOSED TOP OF LINER & SITE CONDITIONS PLAN

SHEET NO.

C02

FILENAME: C:\PW\WORKING\DIRECTOR\PROJECTS\2024\DILLON_43905\DWG\25\1\249200-02-PROJ-CO-CON.DWG PLOTTED BY: SIERO, BRAD
PLOT DATE: 2025-06-26 @ 11:35:57 AM PLOT SCALE: 1:500.4 PLOT STYLE: DILLON-STANDARD.CTB
Dillon Consulting Limited, 100 Innovation Dr #300, Winnipeg, MB R3T 6G2



REVISION SCHEDULE		
REVISION NUMBER	REVISION DESCRIPTION	REVISION DATE
1	BERM TOP WIDTH CHANGED FROM 2.0m TO 3.0m BASED ON PROVINCIAL REVIEW	2025-06-26

Conditions of Use

Verify elevations and/or dimensions on drawing prior to use.
Report any discrepancies to Dillon Consulting Limited.

Do not scale dimensions from drawing.

Do not modify drawing, re-use it, or use it for purposes other than those intended at the time of its preparation without prior written permission from Dillon Consulting Limited.

ISSUED FOR CONSTRUCTION



E	IPC - BERM & ANCHOR TRENCH ADJUSTMENTS	2025-06-26	MP	DESIGN	SS
D	ISSUED FOR CONSTRUCTION	2025-06-06	MP	DRAWN	BS
C	ISSUED FOR TENDER	2025-03-28	MP	DATE	JUNE 2025
B	ISSUED FOR 90% DESIGN REVIEW	2025-03-07	MP	SCALE	1:500
A	ISSUED FOR 50% DESIGN REVIEW	2025-02-07	MP		
No.	ISSUED FOR	DATE	BY		

RURAL MUNICIPALITY OF ST. CLEMENTS - LIBAU LANDFILL
LANDFILL CELL 2 DESIGN

PROJECT NO.
24-9200

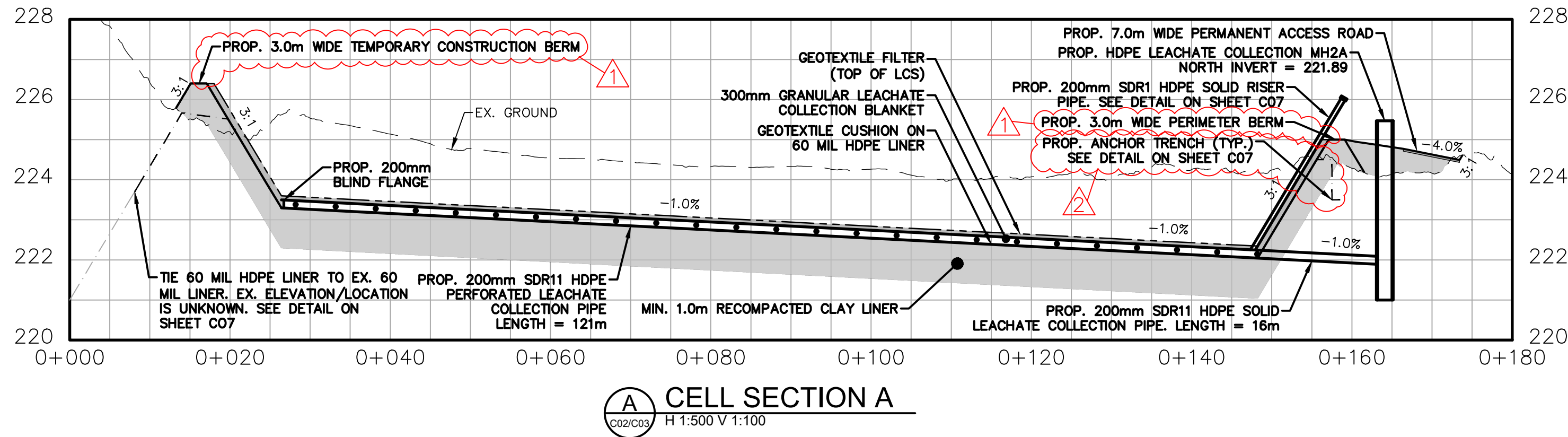
PROPOSED TOP OF LEACHATE
COLLECTION SYSTEM PLAN

SHEET NO.

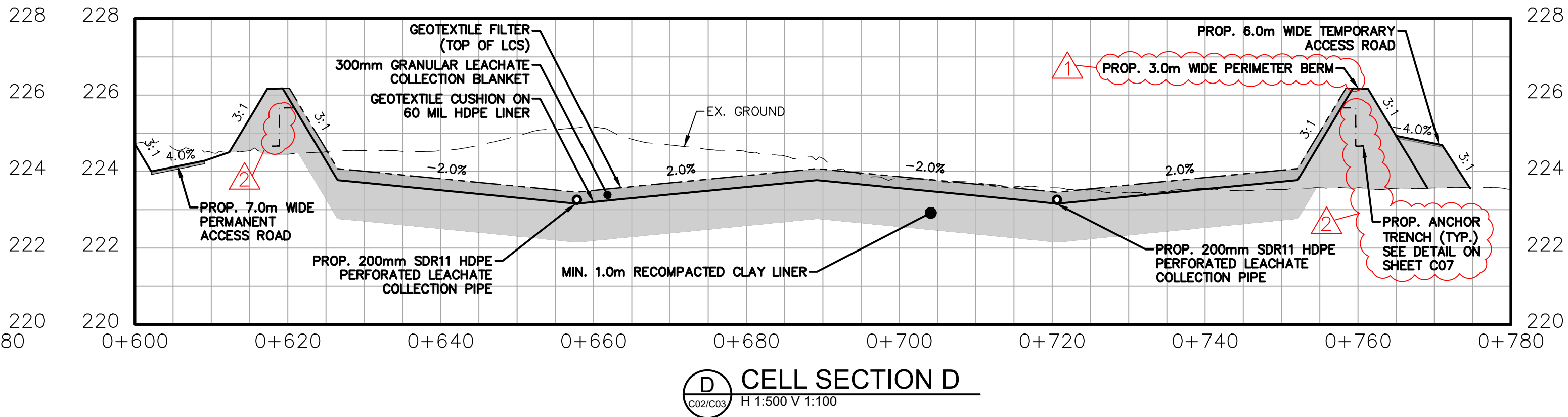
C03

Dillon Consulting Limited, 100 Innovation Dr #300, Winnipeg, MB R3T 6C2

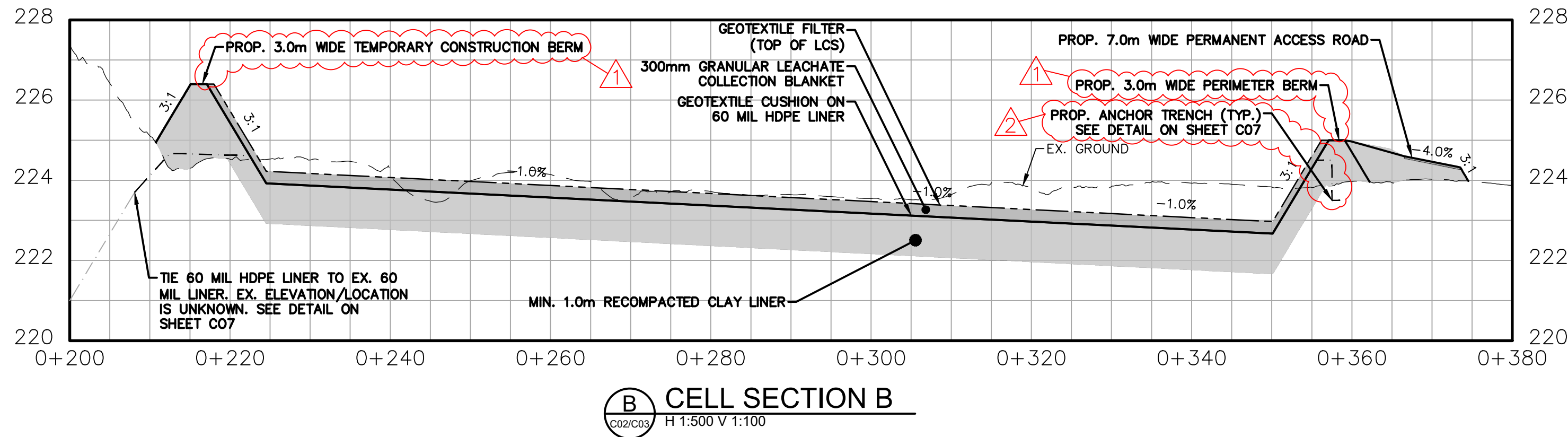
FILENAME: C:\P\WORKING\DIRECTOR\PROJECTS\2024\DILLON_43905\DWG\25\1\249200-02-PSITE-CON-DWG PLOTTED BY: SFE00, BRAD
PLOT DATE: 2025-06-26 @ 11:52:07 AM PLOT SCALE: 1:25.4 PLOT STYLE: DILLON-STANDARD.CTB



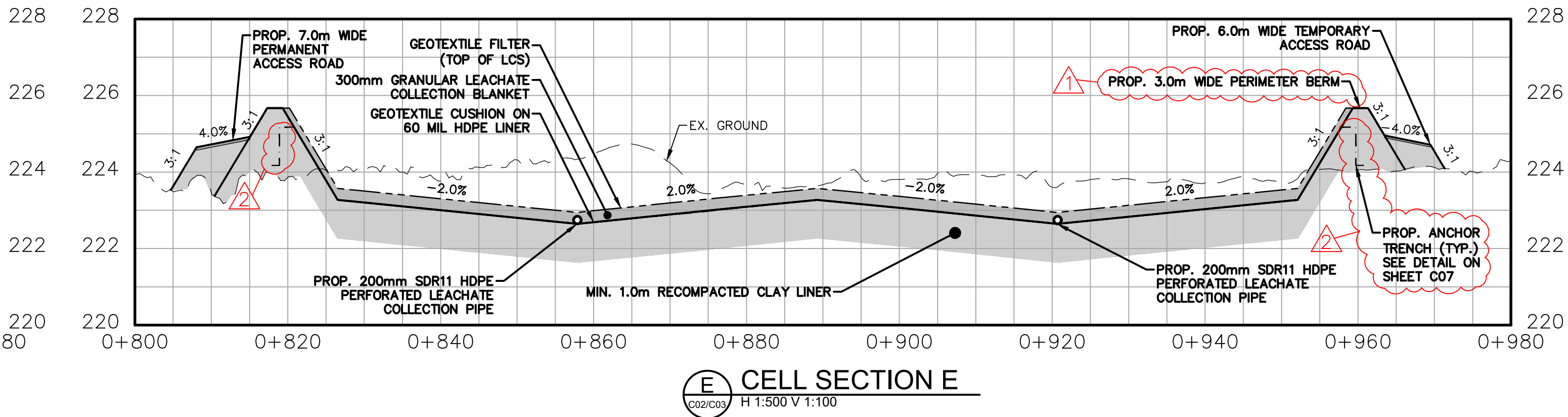
CELL SECTION A
H 1:500 V 1:100



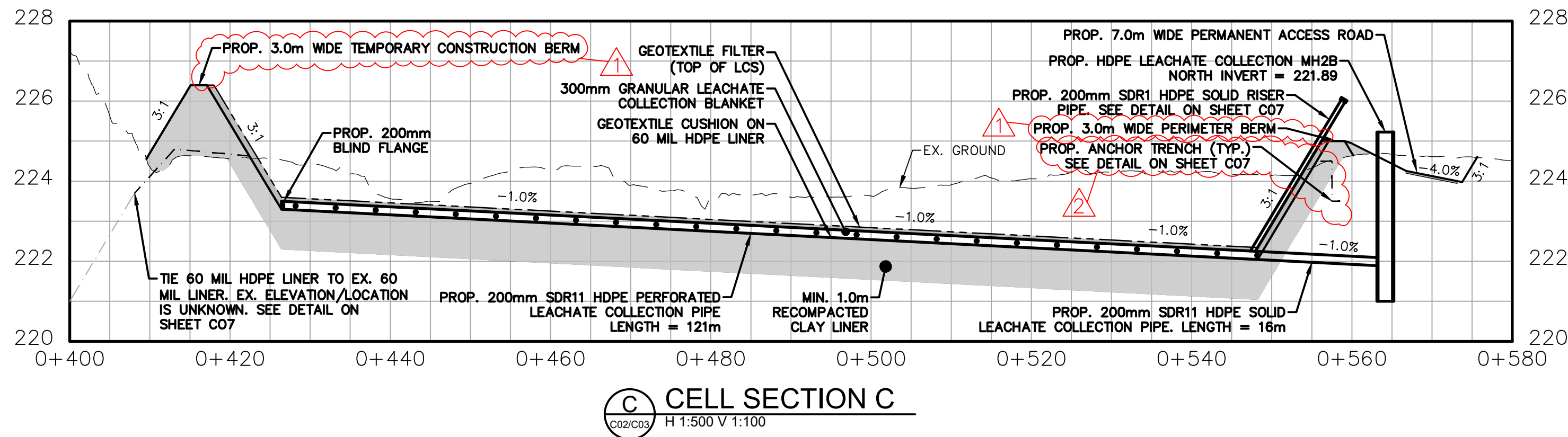
CELL SECTION D
H 1:500 V 1:100



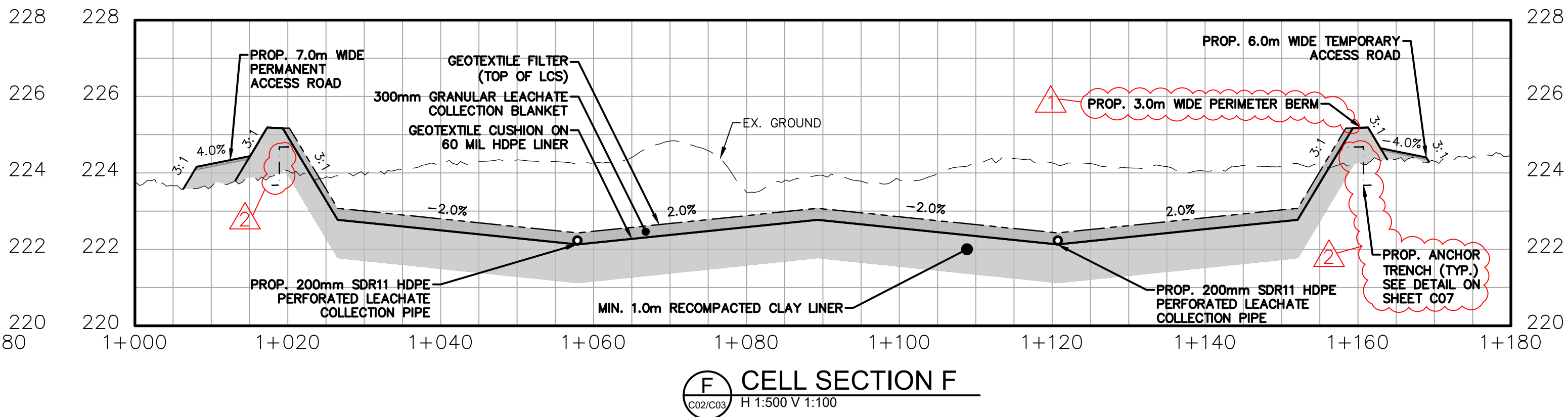
CELL SECTION B
H 1:500 V 1:100



CELL SECTION E
H 1:500 V 1:100

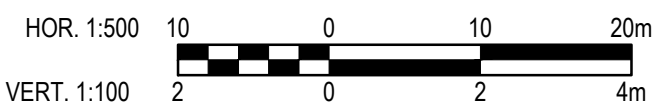


CELL SECTION C
H 1:500 V 1:100



CELL SECTION F
H 1:500 V 1:100

REVISION SCHEDULE		
REVISION NUMBER	REVISION DESCRIPTION	REVISION DATE
1	BERM TOP WIDTH CHANGED FROM 2.0m TO 3.0m BASED ON PROVINCIAL REVIEW	2025-06-26
2	ANCHOR TRENCH EXTENDED HORIZONTALLY 1.0m & CENTERED WITHIN BERM BASED ON PROVINCIAL REVIEW	2025-06-26



Conditions of Use

Verify elevations and/or dimensions on drawing prior to use. Report any discrepancies to Dillon Consulting Limited.

Do not scale dimensions from drawing.

Do not modify drawing, re-use it, or use it for purposes other than those intended at the time of its preparation without prior written permission from Dillon Consulting Limited.

ISSUED FOR CONSTRUCTION



No.	ISSUED FOR	DATE	BY
E	IFC - BERM & ANCHOR TRENCH ADJUSTMENTS	2025-06-26	MP
D	ISSUED FOR CONSTRUCTION	2025-06-06	MP
C	ISSUED FOR TENDER	2025-03-28	MP
B	ISSUED FOR 90% DESIGN REVIEW	2025-03-07	MP
A	ISSUED FOR 50% DESIGN REVIEW	2025-02-07	MP

DESIGN	SS	REVIEWED BY	MP
DRAWN	BS	CHECKED BY	SS
DATE	JUNE 2025		
SCALE	H 1:500 V 1:100		

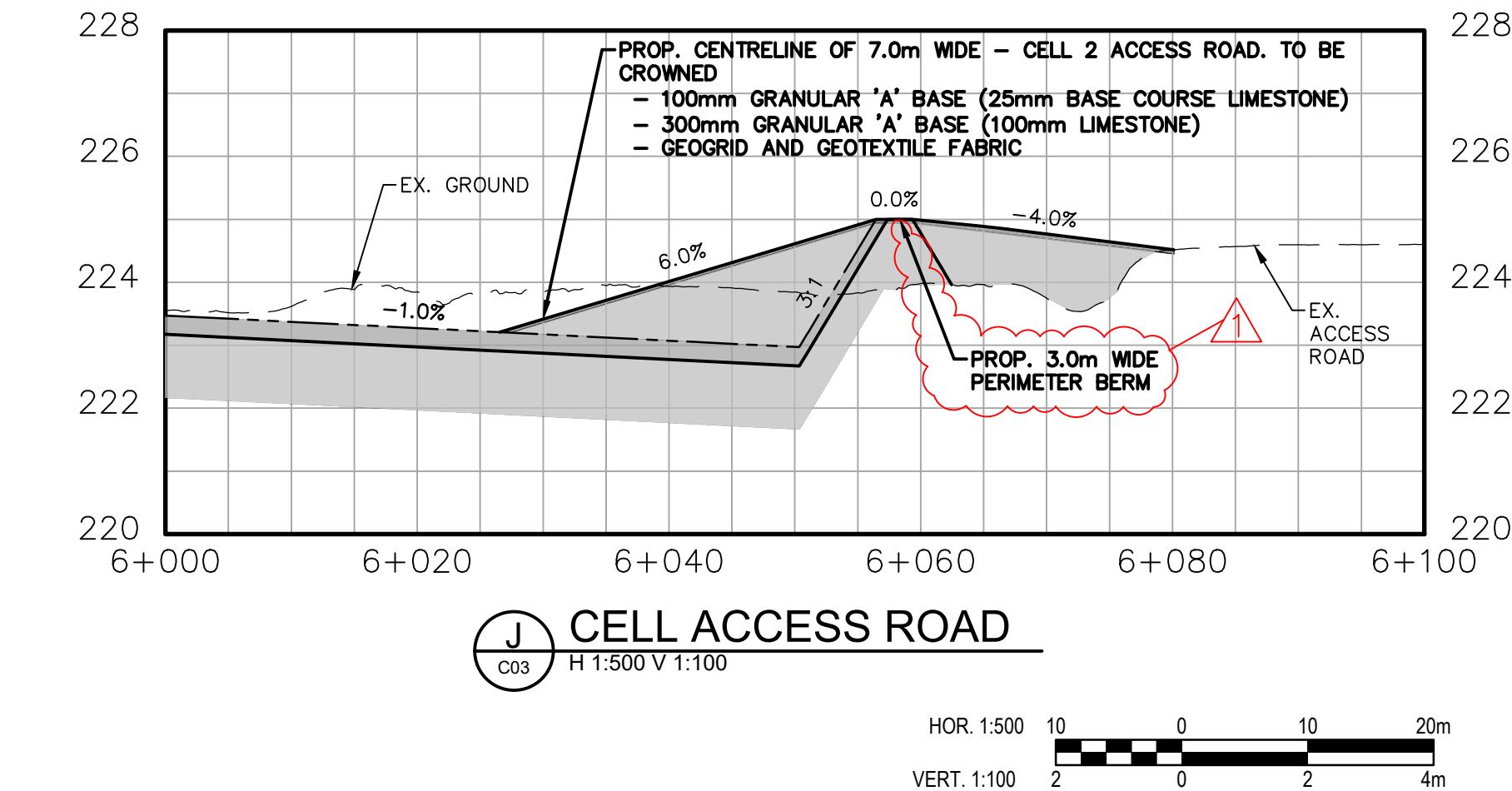
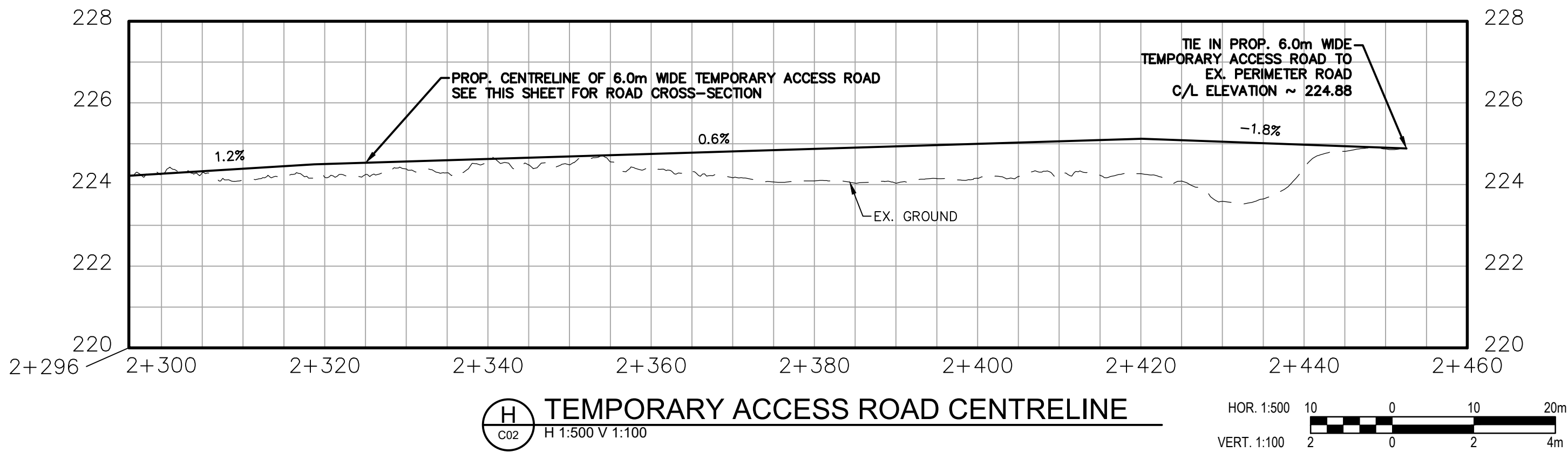
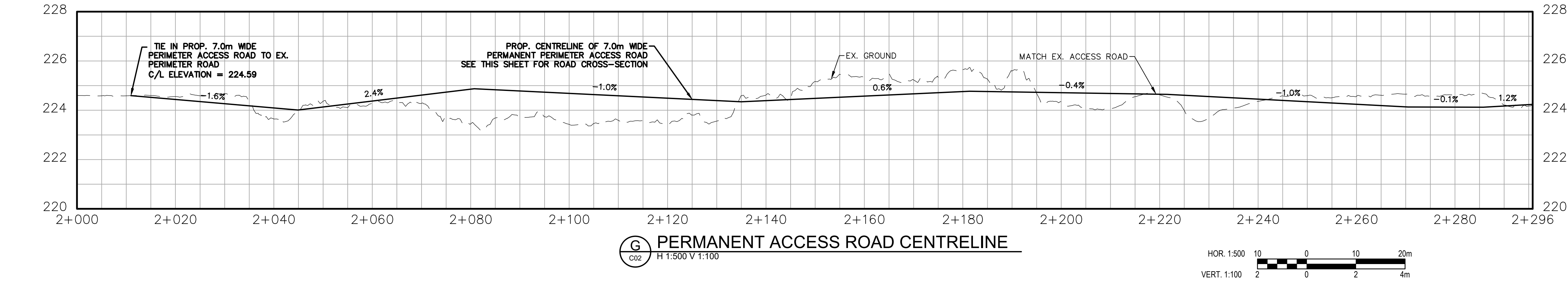
RURAL MUNICIPALITY OF ST. CLEMENTS - LIBAU LANDFILL
LANDFILL CELL 2 DESIGN

LANDFILL CELL 2 SECTIONS

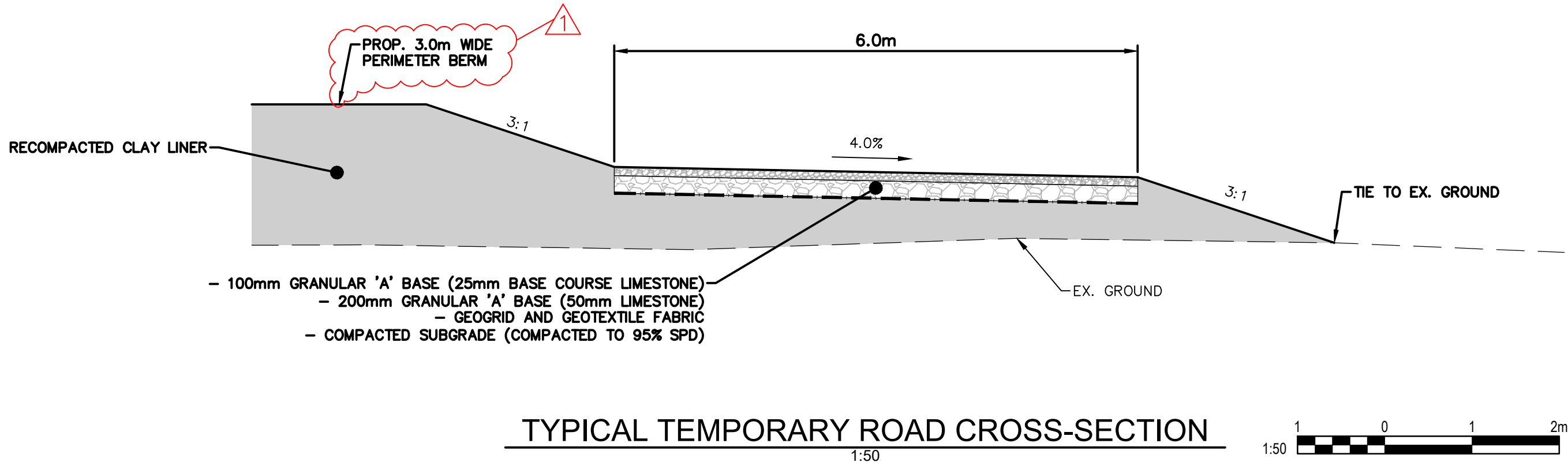
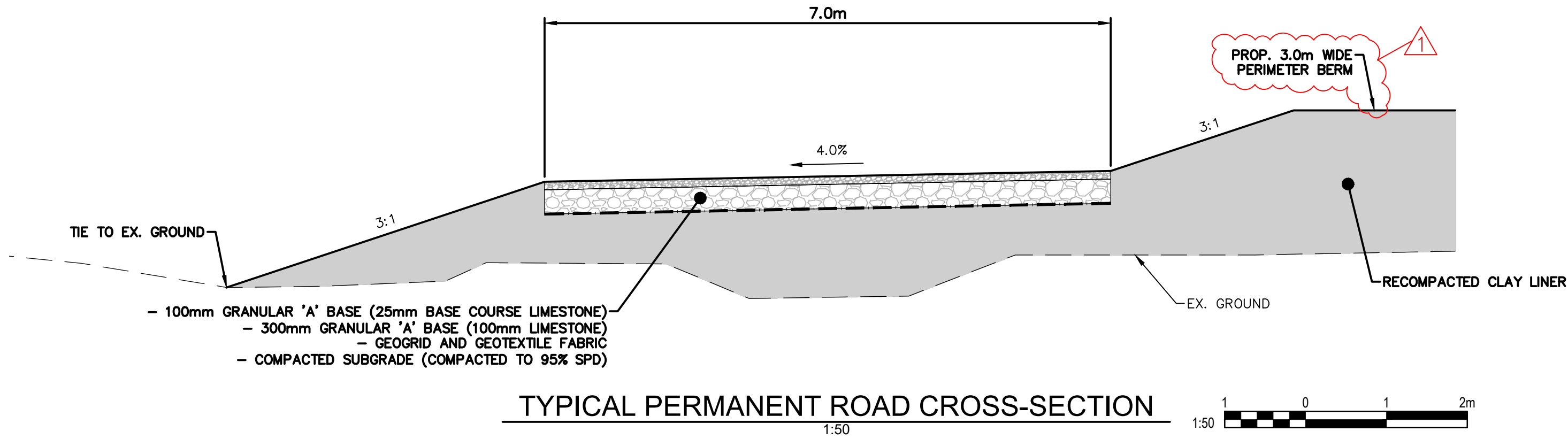
PROJECT NO.
24-9200

SHEET NO.

C04



REVISION SCHEDULE		
REVISION NUMBER	REVISION DESCRIPTION	REVISION DATE
1	BERM TOP WIDTH CHANGED FROM 2.0m TO 3.0m BASED ON PROVINCIAL REVIEW	2025-06-26



Conditions of Use

Verify elevations and/or dimensions on drawing prior to use.
Report any discrepancies to Dillon Consulting Limited.

Do not scale dimensions from drawing.

Do not modify drawing, re-use it, or use it for purposes other than those intended at the time of its preparation without prior written permission from Dillon Consulting Limited.

ISSUED FOR CONSTRUCTION



No.	ISSUED FOR	DATE	BY
E	IFC - BERM & ANCHOR TRENCH ADJUSTMENTS	2025-06-26	MP
D	ISSUED FOR CONSTRUCTION	2025-06-06	MP
C	ISSUED FOR TENDER	2025-03-28	MP
B	ISSUED FOR 90% DESIGN REVIEW	2025-03-07	MP
A	ISSUED FOR 50% DESIGN REVIEW	2025-02-07	MP

DESIGN	REVIEWED BY
SS	MP
DRAWN	CHECKED BY
BS	SS
DATE	JUNE 2025
SCALE	AS SHOWN

RURAL MUNICIPALITY OF ST. CLEMENTS - LIBAU LANDFILL
LANDFILL CELL 2 DESIGN

ROADWAY PROFILES & SECTIONS

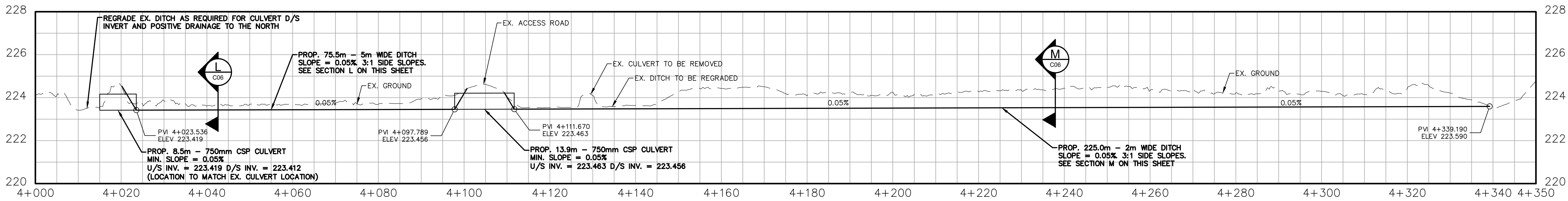
PROJECT NO.
24-9200

SHEET NO.

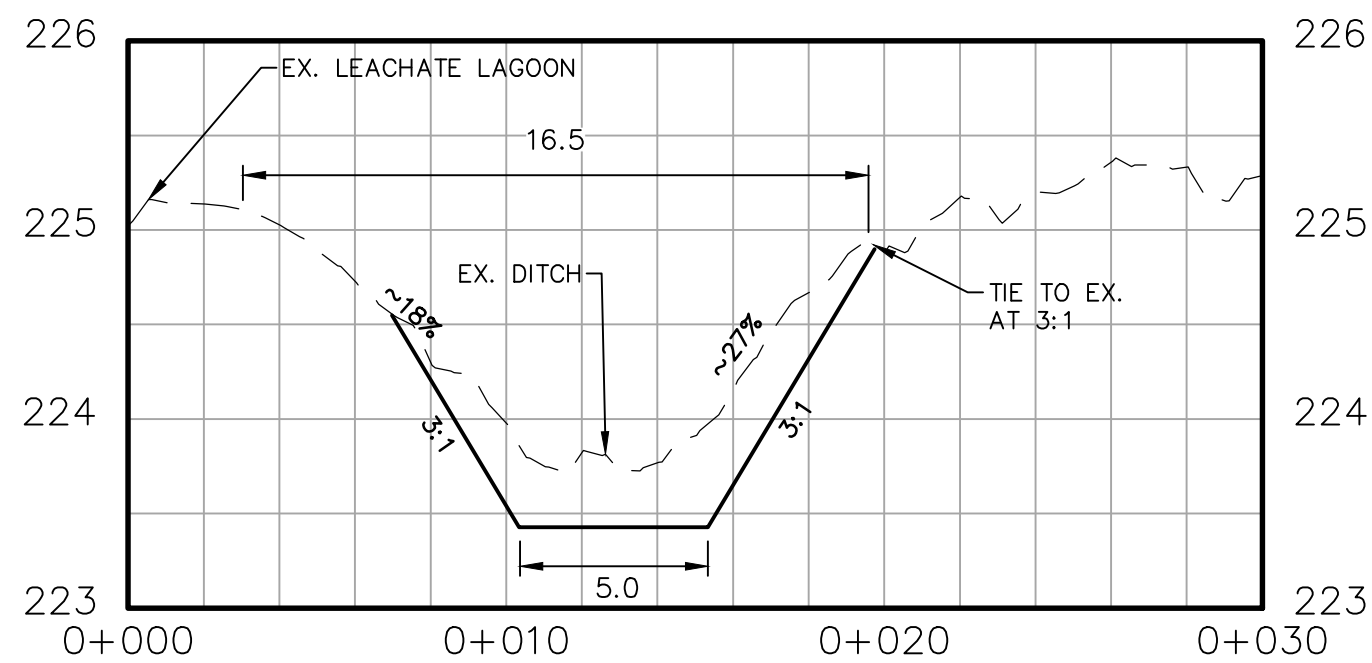
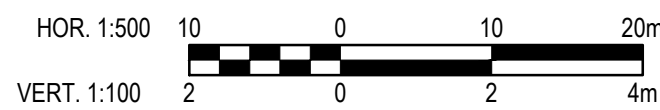
C05

Dillon Consulting Limited, 100 Innovation Dr #200, Winnipeg, MB R3T 6G2

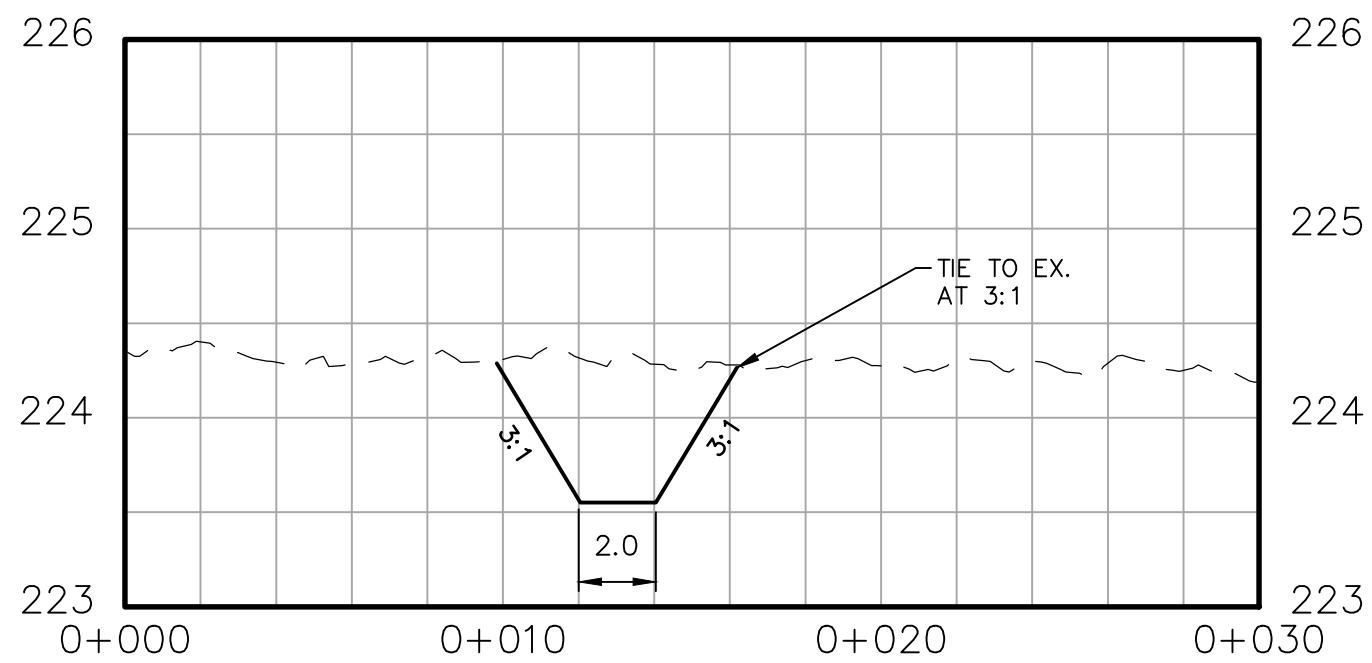
FILENAME: C:\P\WORKING DIRECTORIES\PROJECTS 2024\DILLON_43905\DWG\251\249200-02-PSITE-CON.DWG PLOTTED BY: SFE00, BRAD
PLOT DATE: 2025-06-26 11:56:40 AM PLOT SCALE: 1:25.4 PLOT STYLE: DILLON-STANDARD.CTB



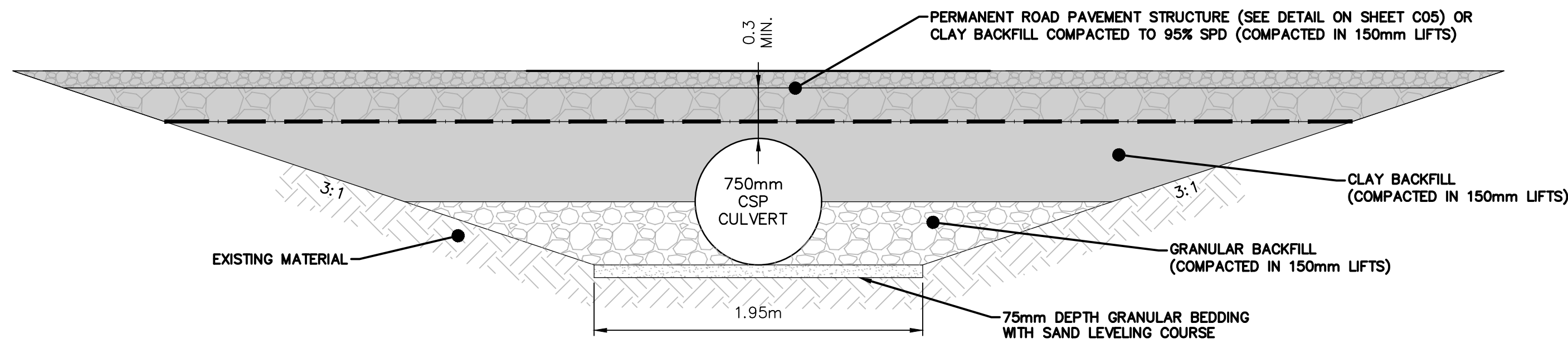
K
C02 H 1:500 V 1:100



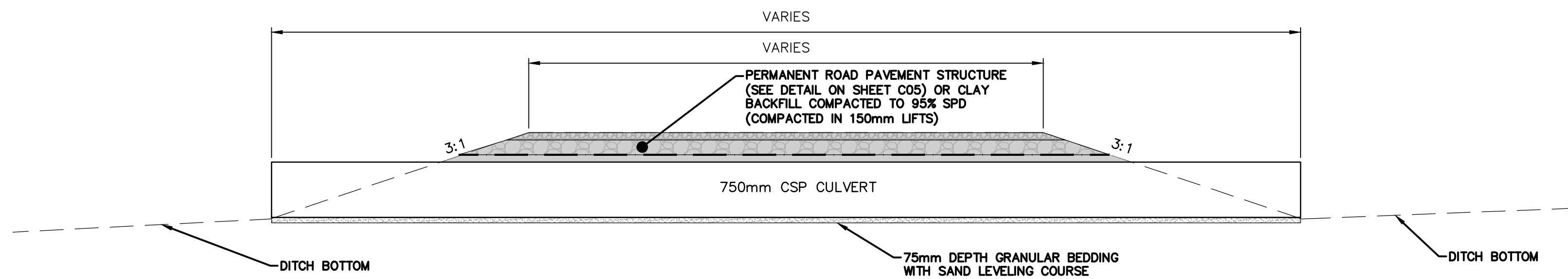
L
C02/C06 H 1:200 V 1:40



M
C02/C06 H 1:200 V 1:40



TYPICAL CULVERT BACKFILL SECTION



TYPICAL CULVERT PROFILE

Conditions of Use

Verify elevations and/or dimensions on drawing prior to use.
Report any discrepancies to Dillon Consulting Limited.

Do not scale dimensions from drawing.

Do not modify drawing, re-use it, or use it for purposes other
than those intended at the time of its preparation without prior
written permission from Dillon Consulting Limited.

ISSUED FOR CONSTRUCTION



E	IPC - BERM & ANCHOR TRENCH ADJUSTMENTS	2025-06-26	MP		
D	ISSUED FOR CONSTRUCTION	2025-06-06	MP		
C	ISSUED FOR TENDER	2025-03-28	MP		
B	ISSUED FOR 90% DESIGN REVIEW	2025-03-07	MP		
A	ISSUED FOR 50% DESIGN REVIEW	2025-02-07	MP		
No.	ISSUED FOR	DATE	BY		

DESIGN	SS	REVIEWED BY	MP
DRAWN	BS	CHECKED BY	SS
DATE	JUNE 2025		
SCALE	AS SHOWN		

RURAL MUNICIPALITY OF ST. CLEMENTS - LIBAU LANDFILL
LANDFILL CELL 2 DESIGN

STORMWATER DITCHING PROFILE & SECTIONS

PROJECT NO.
24-9200

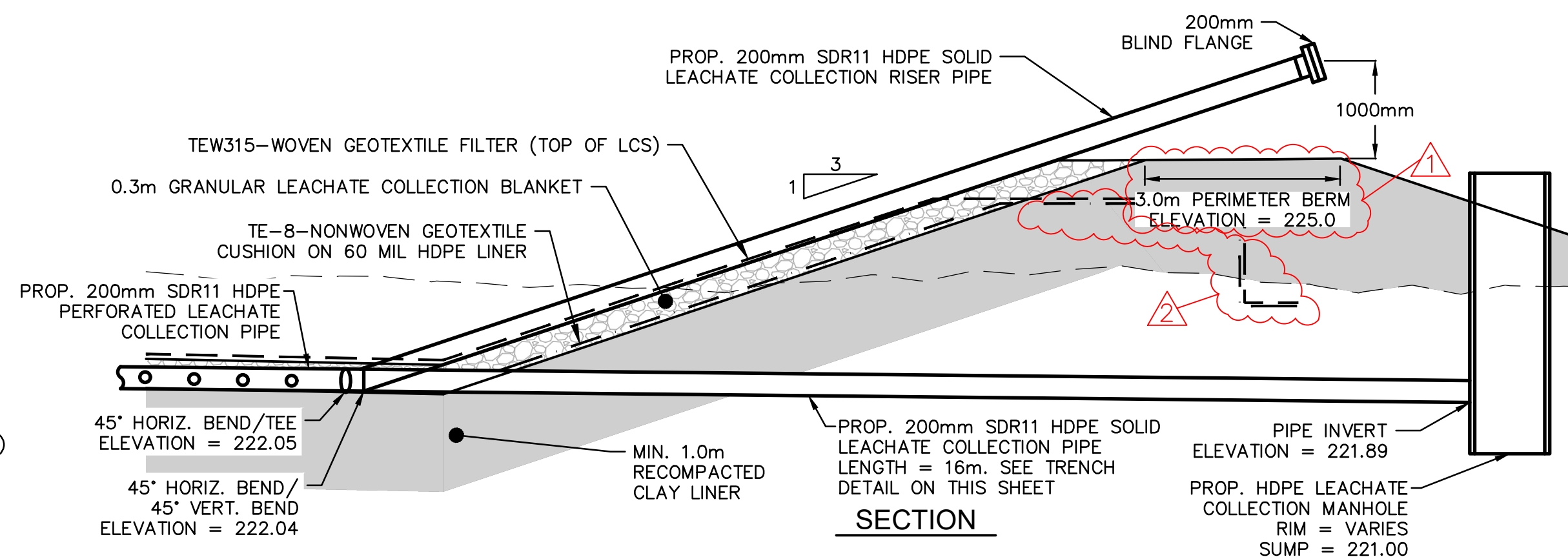
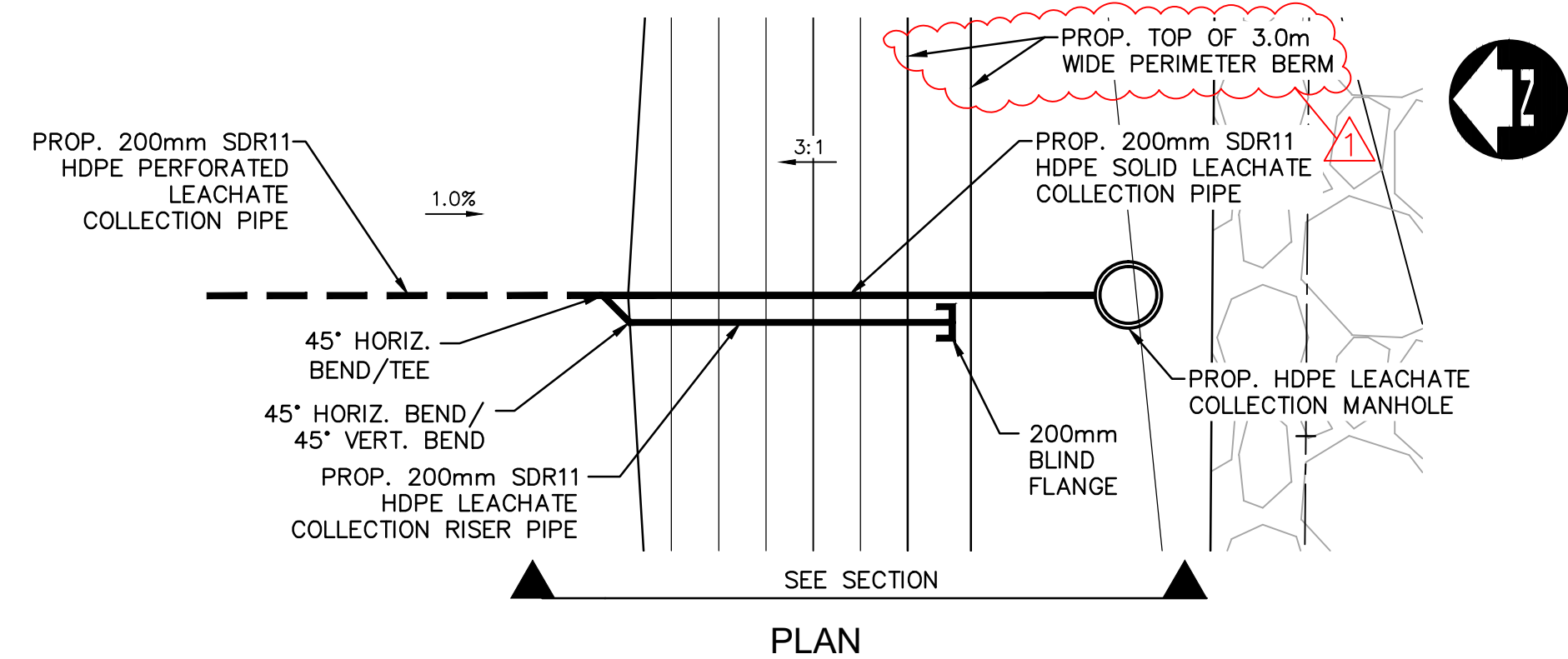
SHEET NO.

C06



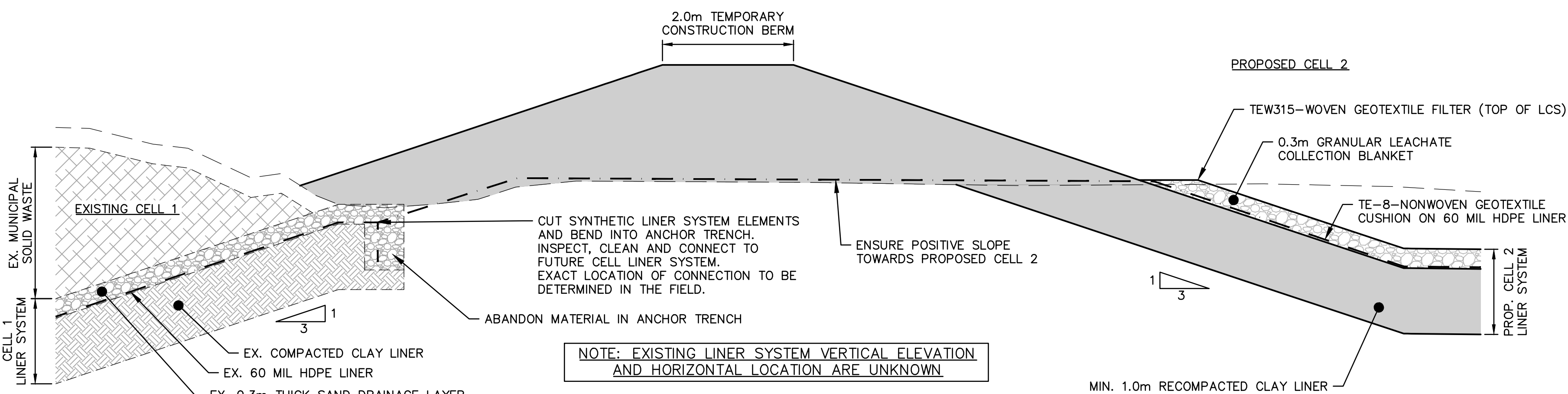
1. PENETRATION OF CLAY LINER SEALED WITH 914mmØ HDPE COLLAR, WITH 150mm THICKNESS OF BENTONITE PELLETS PLACED BEHIND COLLAR.

2. 200mm SOLID DR11 HDPE PIPE INSTALLED c/w ALL
NECESSARY FITTINGS AND GATE VALVES FULLY SUPPORTED.



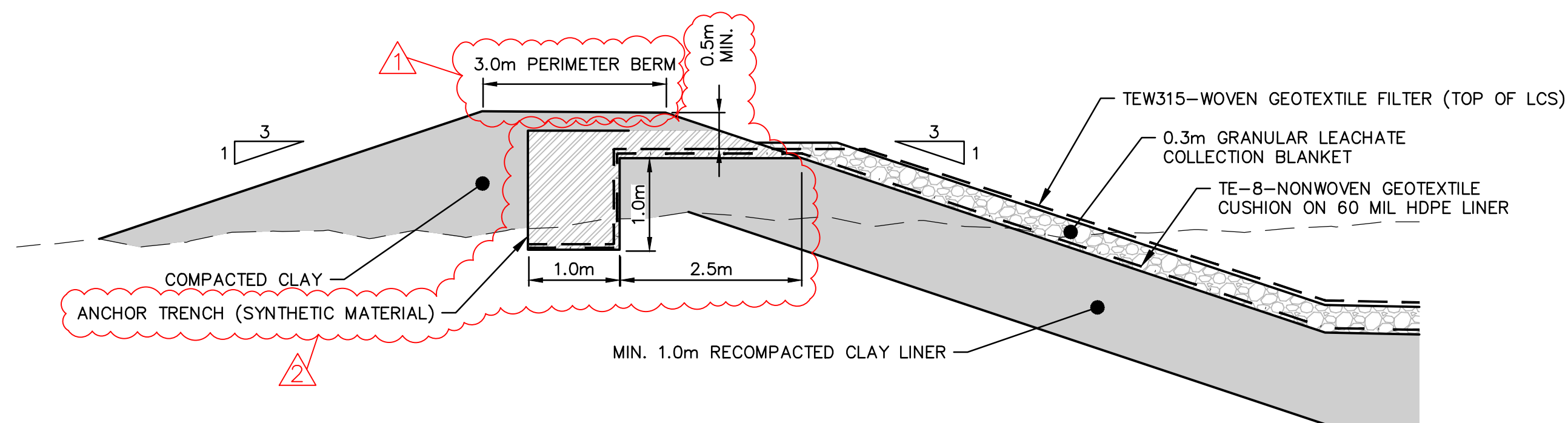
RISER PIPE DETAIL

NOT TO SCALE

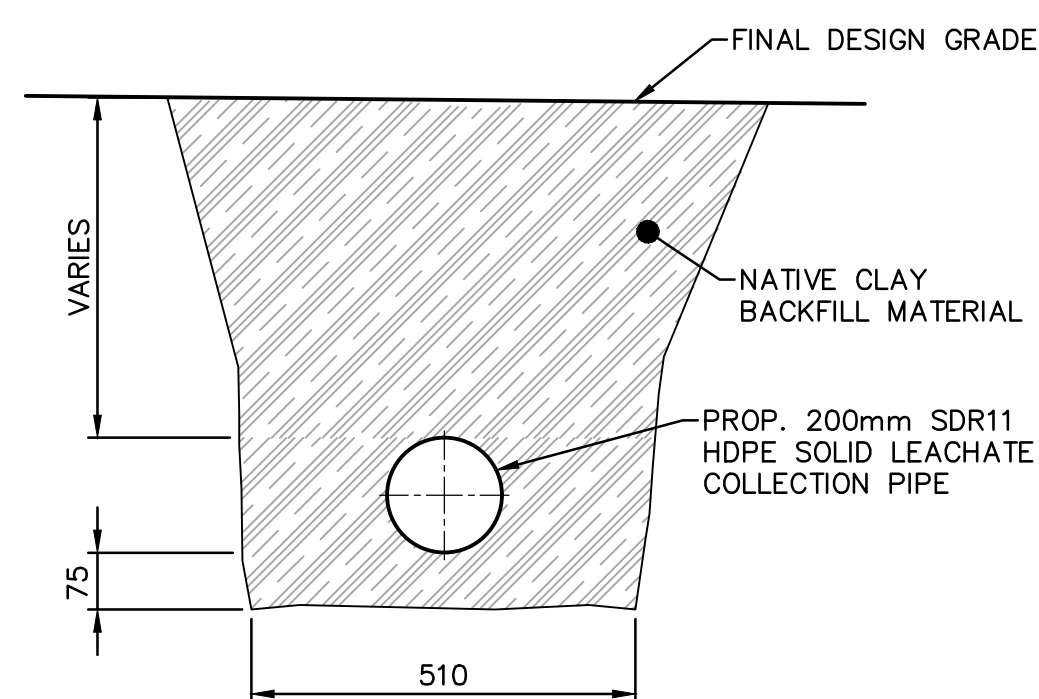


EXISTING CELL LINER CONNECTION DETAIL

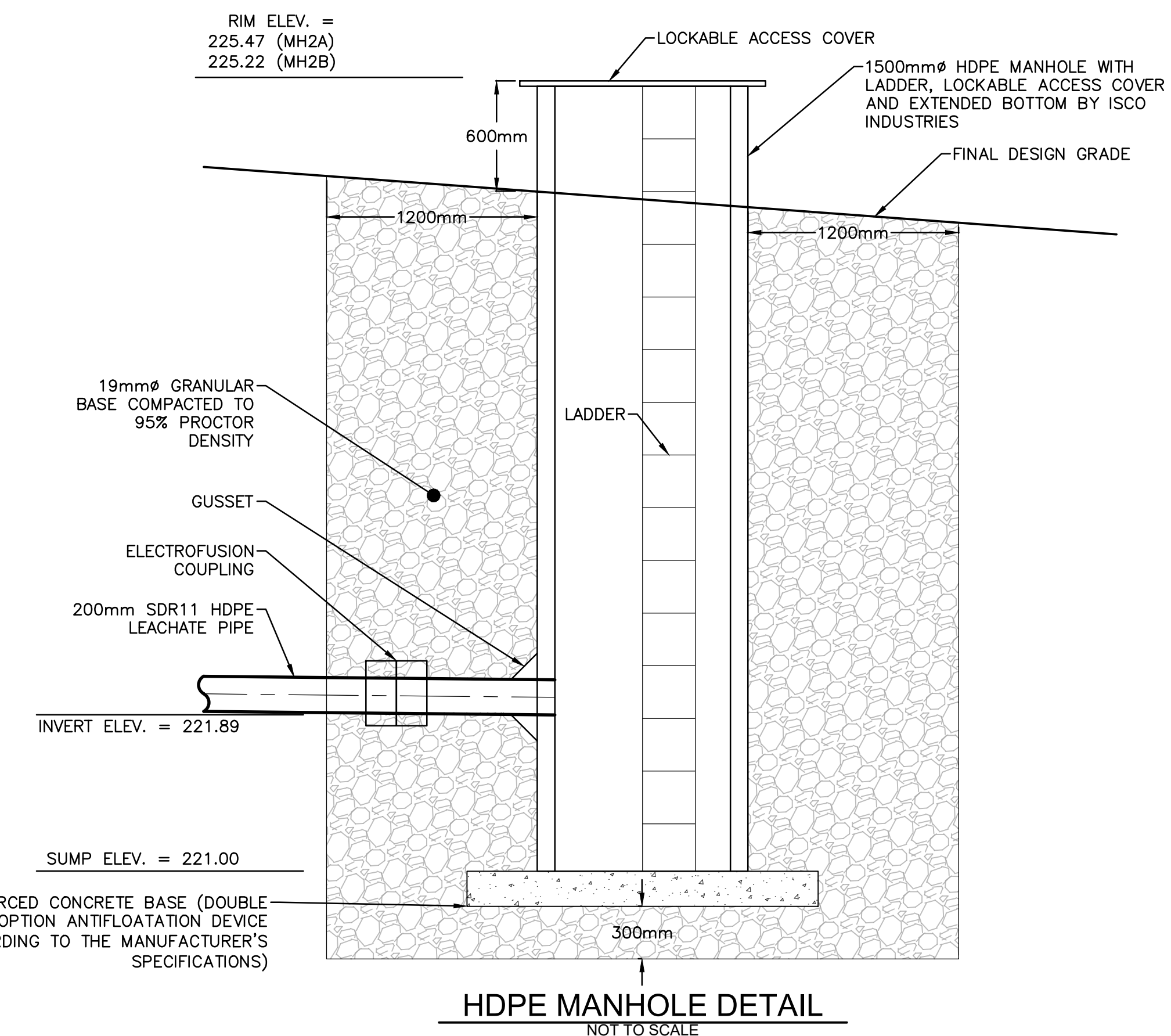
REVISION SCHEDULE		
REVISION NUMBER	REVISION DESCRIPTION	REVISION DATE
1	BERM TOP WIDTH CHANGED FROM 2.0m TO 3.0m BASED ON PROVINCIAL REVIEW	2025-06-26
2	ANCHOR TRENCH EXTENDED HORIZONTALLY 1.0m & CENTERED WITHIN BERM BASED ON PROVINCIAL REVIEW	2025-06-26



ANCHOR TRENCH DETAIL



SOLID LEACHATE COLLECTION PIPE DETAIL



C07