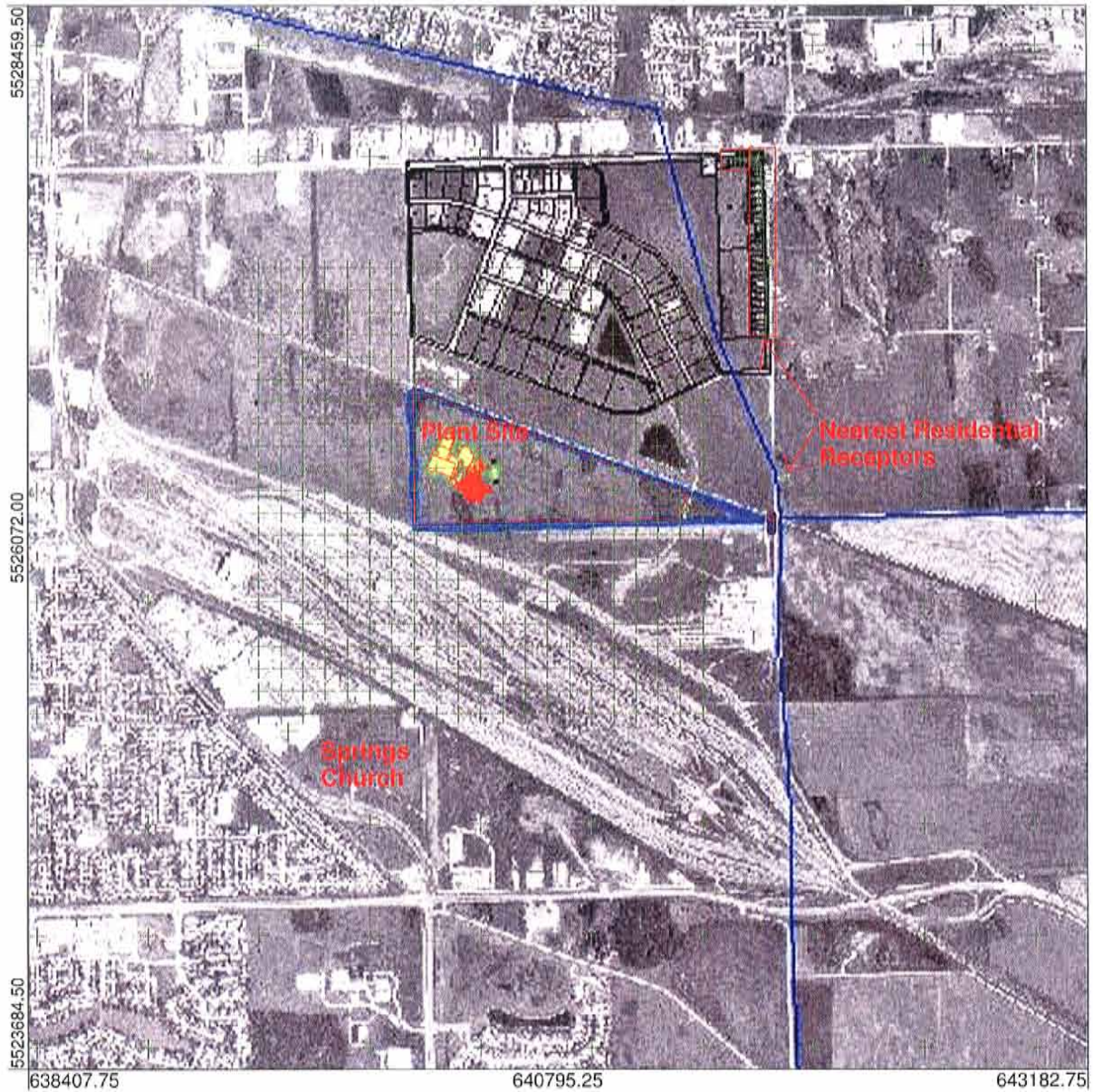

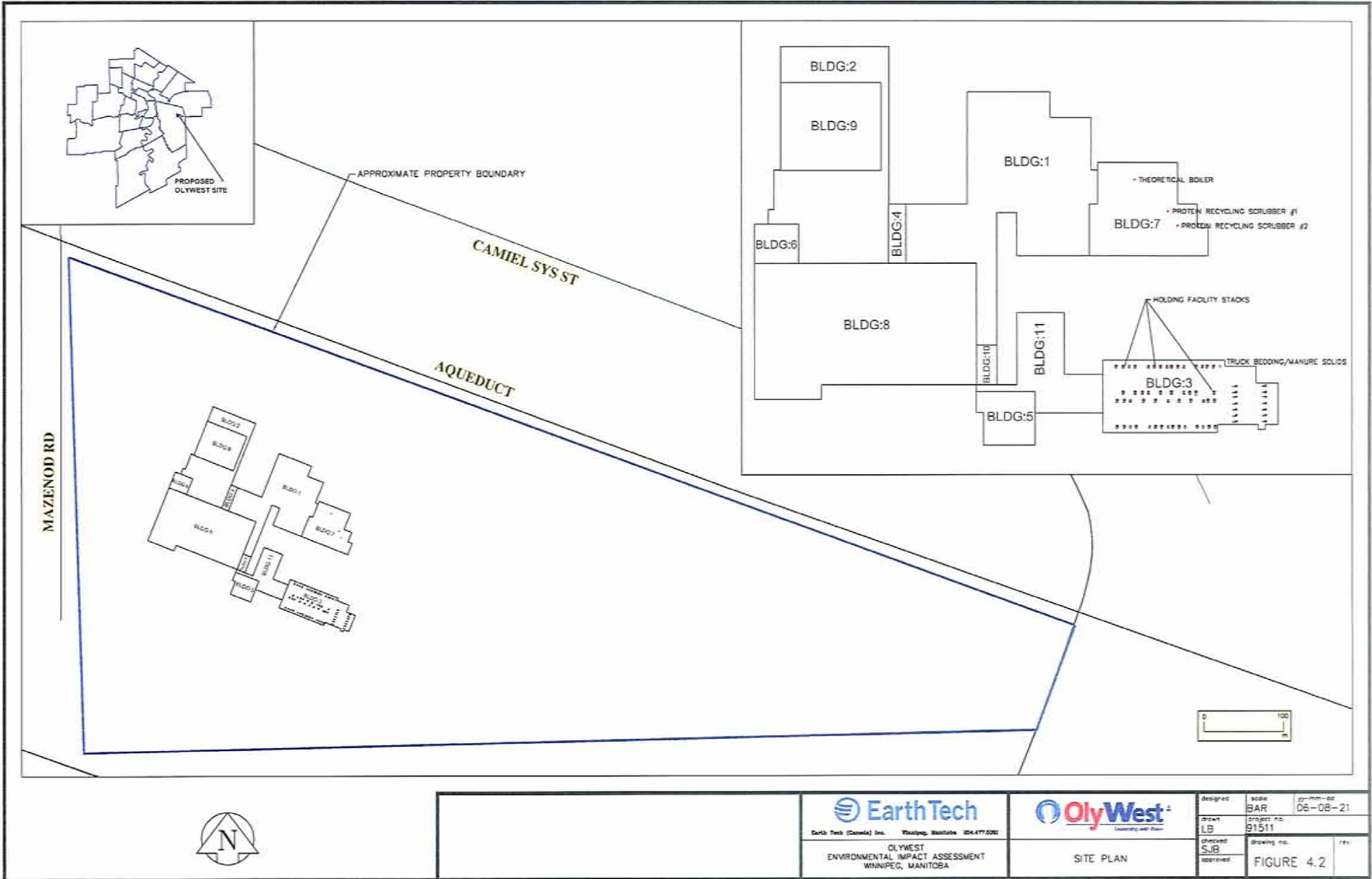


PROJECT NAME :

Figure 4.1 - General Layout of Defined Receptors Around the Site



COMMENTS : Green + indicates modeled receptor locations	SOURCES : 69	COMPANY NAME : Earth Tech	
	RECEPTORS : 964	MODELER : SJB	0  0.5 km
		DATE : 8/23/2006	PROJECT NO. : 91511



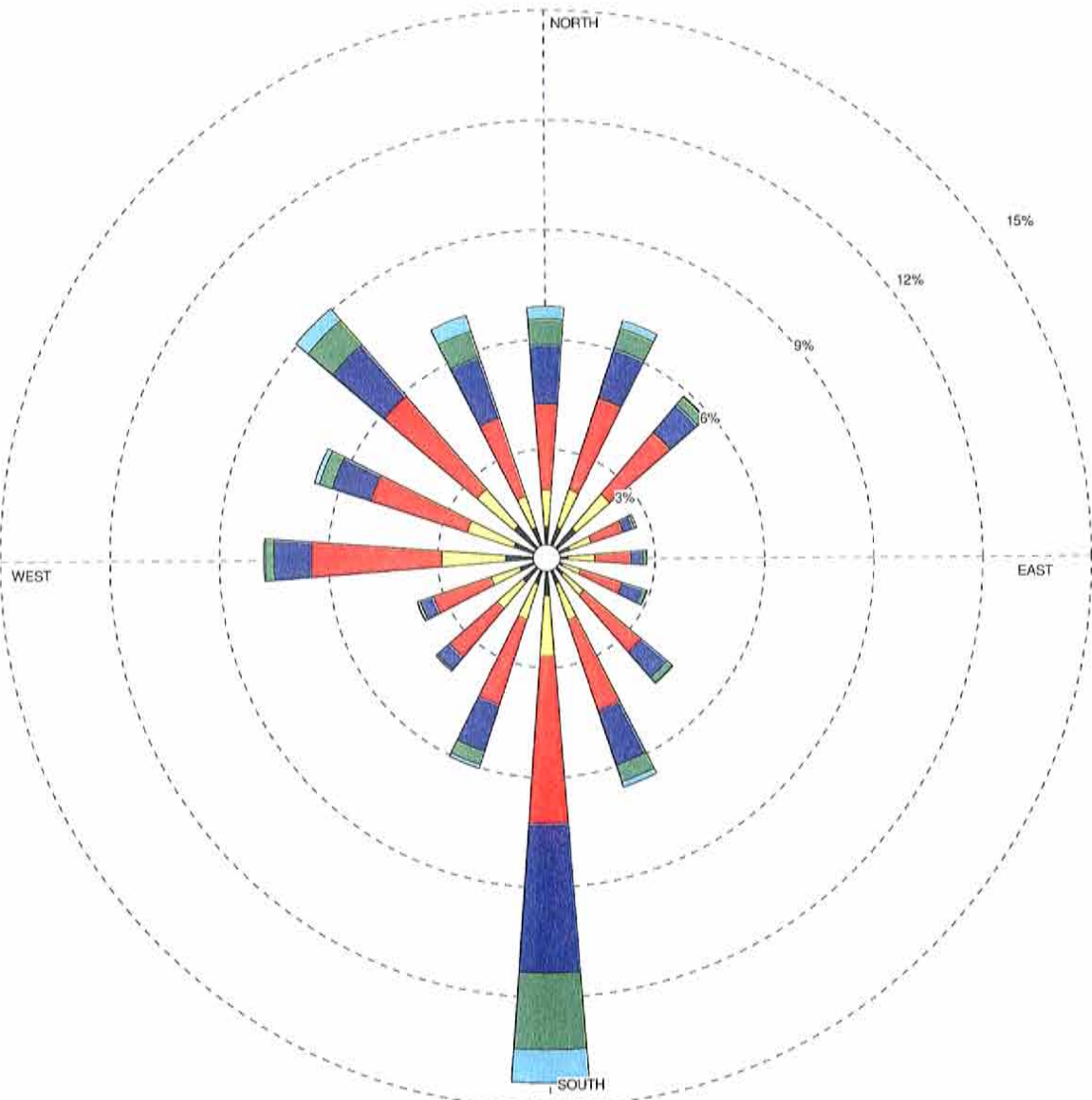
EarthTech
 Earth Tech (Canada) Inc. Winnipeg, Manitoba (204) 477-0201

OlyWest
 Technology with Purpose

designed	scale	pp-mm-ss
LIB	BAR	06-08-21
checked	project no.	
SJB	91511	
approved	drawing no.	rev.
	FIGURE 4.2	

WIND ROSE PLOT

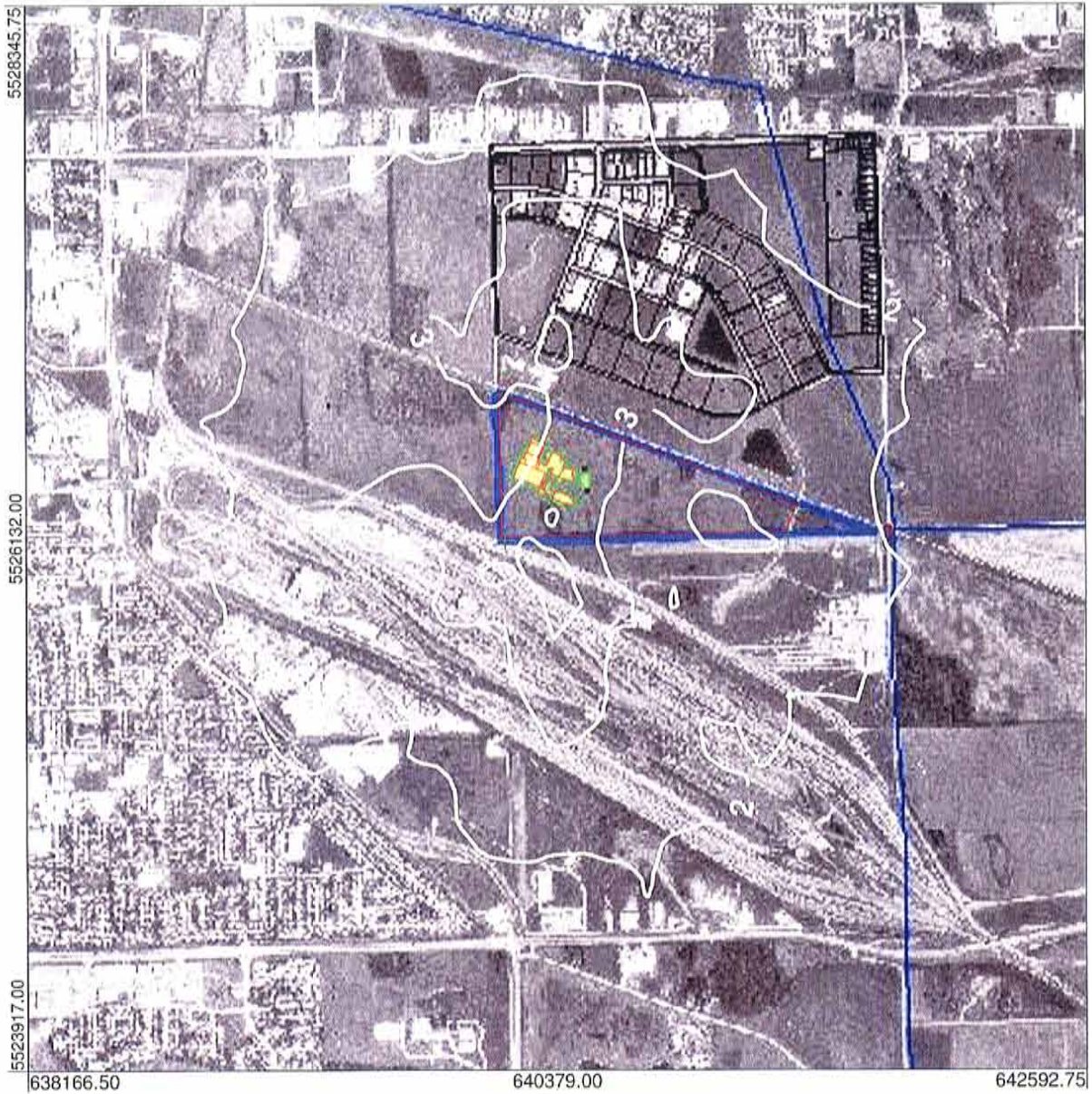
Figure 4.3 Winnipeg Airport Windrose




<p>Wind Speed (m/s)</p> <ul style="list-style-type: none"> > 11.06 8.49 - 11.06 5.40 - 8.49 3.34 - 5.40 1.80 - 3.34 0.51 - 1.80 	<p>MODELER SJB</p>	<p>DATE 8/23/2006</p>	<p>COMPANY NAME Earth Tech Canada (Ltd)</p>	
	<p>DISPLAY Wind Speed</p>	<p>UNIT m/s</p>	<p>COMMENTS Windrose, Winnipeg Airport 1996-2000</p>	
	<p>AVG. WIND SPEED 4.73 m/s</p>	<p>CALM WINDS 2.22%</p>		
	<p>ORIENTATION Direction (blowing from)</p>	<p>PLOT YEAR-DATE-TIME 1996 Jan 1 - Dec 31 Midnight - 11 PM</p>	<p>PROJECT/PLOT NO. 91511</p>	

PROJECT NAME :

Figure 6.1 Olywest Modeled Odour Concentration Isopleths



MODELING OPTIONS :			COMPANY NAME :	
CONC, URBAN, FLAT, FLGPOL, DFAULT			Earth Tech	
OUTPUT TYPE :	RECEPTORS :	COMMENTS :	MODELER :	0  0.5 km
CONC	932		SJB	
MAX :	UNITS :		DATE :	PROJECT/PLOT NO. :
4.95799	OU		8/2/2006	91511