

**APPENDIX G**  
**WATER TREATMENT PLANT**



**Copyright Reserved**  
 The Contractor shall verify and be responsible for all dimensions. DO NOT scale the drawing - any errors or omissions shall be reported to the Designer. The Contractor shall be responsible for all design and drawings on the property of Stantec. Reproduction or use for any purpose other than that authorized by Stantec is prohibited.

**Consultants**

Legend	EXISTING	LEGEND	PROPOSED
150 WM	WATERMAIN	150 WM	WATERMAIN
190 WM	HYDRANT	190 WM	HYDRANT
300 LBS	VALVE	300 LBS	VALVE
300 WFS	LAND DRAINAGE SEWER	300 WFS	LAND DRAINAGE SEWER
300 WFS	WASTE WATER SEWER	300 WFS	WASTE WATER SEWER
Ø	MANHOLE	Ø	MANHOLE
□	CATCH BASIN	□	CATCH BASIN
▽	CURB INLET	▽	CURB INLET
—	JUNCTIONS	—	JUNCTIONS
—	OUTLETS	—	OUTLETS
—	GAS	—	GAS
—	HYDRO	—	HYDRO
—	M.I.S.	—	M.I.S.
—	CONCRETE	—	CONCRETE
—	ASPHALT	—	ASPHALT
—	SIDEWALK	—	SIDEWALK
—	PROPERTY LINE	—	PROPERTY LINE
—	SURVEY BAR	—	SURVEY BAR
—	DITCH	—	DITCH
31.334	ELEVATION	31.334	ELEVATION

**NOTES:**

1. ALL SUPPLY LINES INSTALLED WITH MINIMUM COVER OF 2.5m.
2. INSTALLED ELECTRICAL CABLE USING TRENCHLESS METHODS UNDER ALL PAVED AREAS.
3. TOPSOIL AND SOD USED FOR RESTORING GRASSED SURFACES.
4. ELECTRICAL CABLE INSTALLED AT A MINIMUM DEPTH OF 1.2m.
5. ALL CONSTRUCTION AND MATERIALS IN ACCORDANCE WITH THE CITY OF WINNIPEG STANDARD CONSTRUCTION SPECIFICATIONS, UNLESS OTHERWISE NOTED.

Revision	By	App'd	Date
1	K.C.	R.M.	05/01/28
Revision	By	App'd	Date

Issued	By	App'd	Date
Issued	By	App'd	Date

File Name: ESP-52-603.dwg  
 Date: 04/03/22  
 Drawn: CHAL  
 Date: 11/24/00  
 Checked: K.C.  
 Date: 01/26/05  
 Rechecked: R.M.  
 Date: 05/01/28

PROVINCE OF MANITOBA  
 REGISTERED PROFESSIONAL ENGINEER  
 K.C. MILLER  
 28/06/03

CONSTRUCTION COMPLETION DATE - AUGUST 16, 2004

Client/Project  
 R.M. OF EAST ST. PAUL  
 WATER SUPPLY WELL

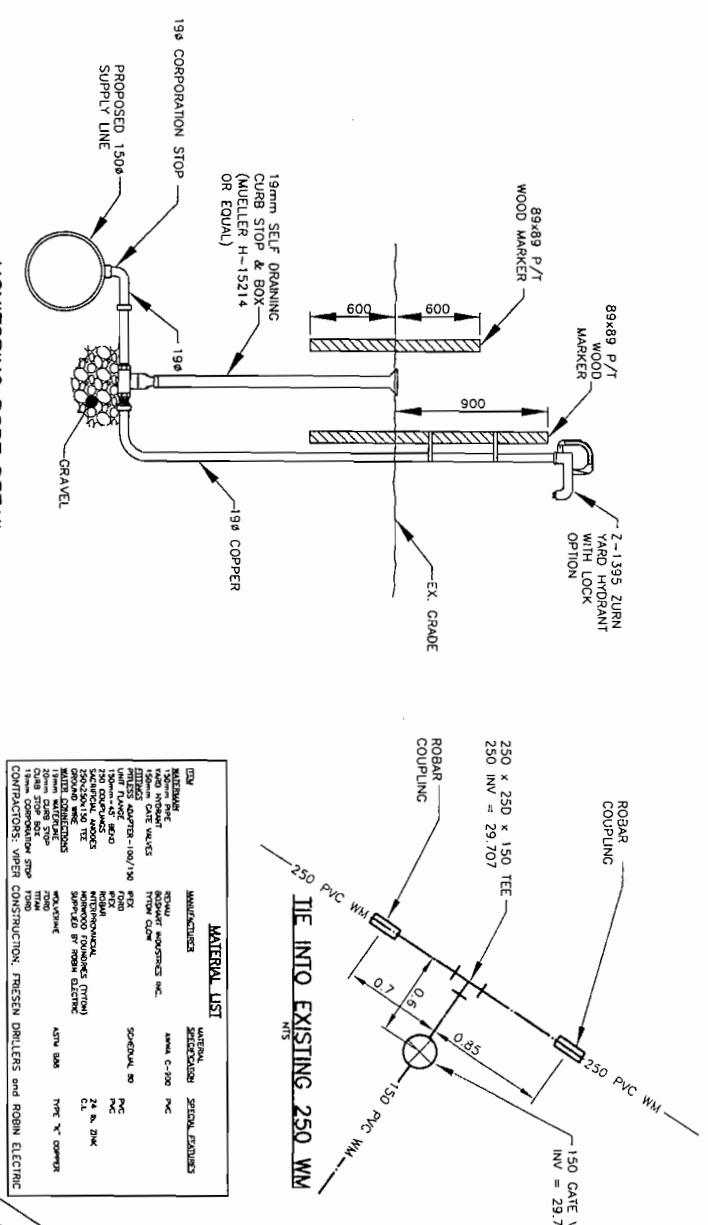
East St. Paul MB Canada

**SITE PLAN**

Project No. 11120/170  
 Scale 1:250  
 Drawing No. Sheet 1 of 1

Revision 1

ESP-52-603



**MATERIAL LIST**

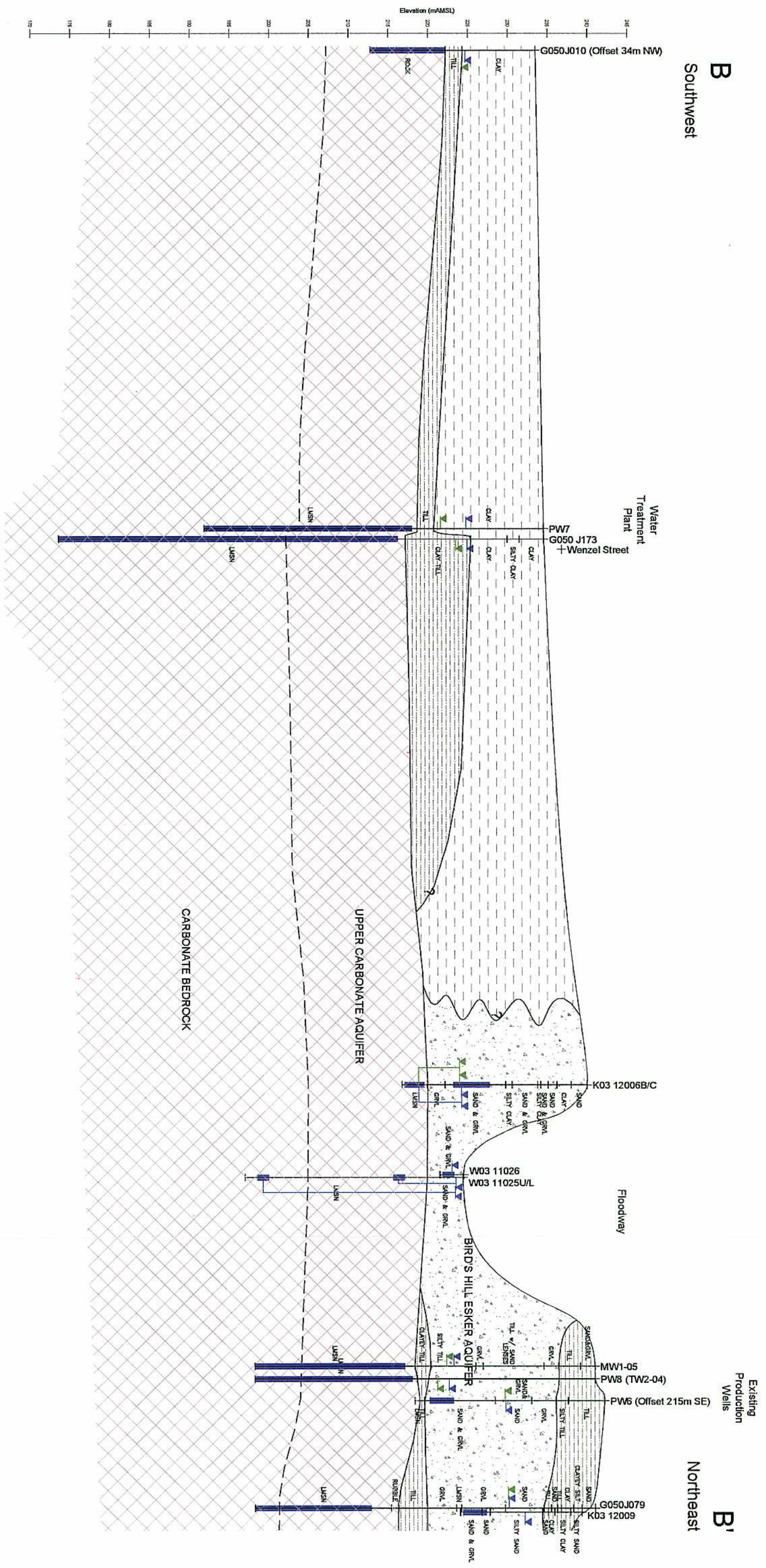
ITEM	QUANTITY	DESCRIPTION	UNIT	REMARKS
150 WM	1	150 TO 100 PITLESS ADAPTER (IPEX SCHEDULE 80) 0.3m N. OF WELL	EA	INV = 30.428
190 COPPER	1	190 COPPER	M	
1500 VALVE	1	1500 VALVE	EA	
MONITORING PORT (YARD HYDRANT)	1	MONITORING PORT (YARD HYDRANT)	EA	
250 PVC WM	1	250 PVC WM	M	
250 x 250 x 150 TEE	1	250 x 250 x 150 TEE	EA	
150 GATE VALVE	1	150 GATE VALVE	EA	INV = 29.770
ROBAR COUPLING	1	ROBAR COUPLING	EA	
250 PVC WM	1	250 PVC WM	M	
150 GATE VALVE	1	150 GATE VALVE	EA	INV = 29.770
250 x 250 x 150 TEE	1	250 x 250 x 150 TEE	EA	
250 PVC WM	1	250 PVC WM	M	
150 GATE VALVE	1	150 GATE VALVE	EA	INV = 29.770
ROBAR COUPLING	1	ROBAR COUPLING	EA	
250 PVC WM	1	250 PVC WM	M	
150 GATE VALVE	1	150 GATE VALVE	EA	INV = 29.770
250 x 250 x 150 TEE	1	250 x 250 x 150 TEE	EA	
250 PVC WM	1	250 PVC WM	M	
150 GATE VALVE	1	150 GATE VALVE	EA	INV = 29.770
ROBAR COUPLING	1	ROBAR COUPLING	EA	
250 PVC WM	1	250 PVC WM	M	
150 GATE VALVE	1	150 GATE VALVE	EA	INV = 29.770
250 x 250 x 150 TEE	1	250 x 250 x 150 TEE	EA	
250 PVC WM	1	250 PVC WM	M	
150 GATE VALVE	1	150 GATE VALVE	EA	INV = 29.770
ROBAR COUPLING	1	ROBAR COUPLING	EA	
250 PVC WM	1	250 PVC WM	M	
150 GATE VALVE	1	150 GATE VALVE	EA	INV = 29.770
250 x 250 x 150 TEE	1	250 x 250 x 150 TEE	EA	
250 PVC WM	1	250 PVC WM	M	
150 GATE VALVE	1	150 GATE VALVE	EA	INV = 29.770
ROBAR COUPLING	1	ROBAR COUPLING	EA	
250 PVC WM	1	250 PVC WM	M	
150 GATE VALVE	1	150 GATE VALVE	EA	INV = 29.770
250 x 250 x 150 TEE	1	250 x 250 x 150 TEE	EA	
250 PVC WM	1	250 PVC WM	M	
150 GATE VALVE	1	150 GATE VALVE	EA	INV = 29.770
ROBAR COUPLING	1	ROBAR COUPLING	EA	
250 PVC WM	1	250 PVC WM	M	
150 GATE VALVE	1	150 GATE VALVE	EA	INV = 29.770
250 x 250 x 150 TEE	1	250 x 250 x 150 TEE	EA	
250 PVC WM	1	250 PVC WM	M	
150 GATE VALVE	1	150 GATE VALVE	EA	INV = 29.770
ROBAR COUPLING	1	ROBAR COUPLING	EA	
250 PVC WM	1	250 PVC WM	M	
150 GATE VALVE	1	150 GATE VALVE	EA	INV = 29.770
250 x 250 x 150 TEE	1	250 x 250 x 150 TEE	EA	
250 PVC WM	1	250 PVC WM	M	
150 GATE VALVE	1	150 GATE VALVE	EA	INV = 29.770
ROBAR COUPLING	1	ROBAR COUPLING	EA	
250 PVC WM	1	250 PVC WM	M	
150 GATE VALVE	1	150 GATE VALVE	EA	INV = 29.770
250 x 250 x 150 TEE	1	250 x 250 x 150 TEE	EA	
250 PVC WM	1	250 PVC WM	M	
150 GATE VALVE	1	150 GATE VALVE	EA	INV = 29.770
ROBAR COUPLING	1	ROBAR COUPLING	EA	
250 PVC WM	1	250 PVC WM	M	
150 GATE VALVE	1	150 GATE VALVE	EA	INV = 29.770
250 x 250 x 150 TEE	1	250 x 250 x 150 TEE	EA	
250 PVC WM	1	250 PVC WM	M	
150 GATE VALVE	1	150 GATE VALVE	EA	INV = 29.770
ROBAR COUPLING	1	ROBAR COUPLING	EA	
250 PVC WM	1	250 PVC WM	M	
150 GATE VALVE	1	150 GATE VALVE	EA	INV = 29.770
250 x 250 x 150 TEE	1	250 x 250 x 150 TEE	EA	
250 PVC WM	1	250 PVC WM	M	
150 GATE VALVE	1	150 GATE VALVE	EA	INV = 29.770
ROBAR COUPLING	1	ROBAR COUPLING	EA	
250 PVC WM	1	250 PVC WM	M	
150 GATE VALVE	1	150 GATE VALVE	EA	INV = 29.770
250 x 250 x 150 TEE	1	250 x 250 x 150 TEE	EA	
250 PVC WM	1	250 PVC WM	M	
150 GATE VALVE	1	150 GATE VALVE	EA	INV = 29.770
ROBAR COUPLING	1	ROBAR COUPLING	EA	
250 PVC WM	1	250 PVC WM	M	
150 GATE VALVE	1	150 GATE VALVE	EA	INV = 29.770
250 x 250 x 150 TEE	1	250 x 250 x 150 TEE	EA	
250 PVC WM	1	250 PVC WM	M	
150 GATE VALVE	1	150 GATE VALVE	EA	INV = 29.770
ROBAR COUPLING	1	ROBAR COUPLING	EA	
250 PVC WM	1	250 PVC WM	M	
150 GATE VALVE	1	150 GATE VALVE	EA	INV = 29.770
250 x 250 x 150 TEE	1	250 x 250 x 150 TEE	EA	
250 PVC WM	1	250 PVC WM	M	
150 GATE VALVE	1	150 GATE VALVE	EA	INV = 29.770
ROBAR COUPLING	1	ROBAR COUPLING	EA	
250 PVC WM	1	250 PVC WM	M	
150 GATE VALVE	1	150 GATE VALVE	EA	INV = 29.770
250 x 250 x 150 TEE	1	250 x 250 x 150 TEE	EA	
250 PVC WM	1	250 PVC WM	M	
150 GATE VALVE	1	150 GATE VALVE	EA	INV = 29.770
ROBAR COUPLING	1	ROBAR COUPLING	EA	
250 PVC WM	1	250 PVC WM	M	
150 GATE VALVE	1	150 GATE VALVE	EA	INV = 29.770
250 x 250 x 150 TEE	1	250 x 250 x 150 TEE	EA	
250 PVC WM	1	250 PVC WM	M	
150 GATE VALVE	1	150 GATE VALVE	EA	INV = 29.770
ROBAR COUPLING	1	ROBAR COUPLING	EA	
250 PVC WM	1	250 PVC WM	M	
150 GATE VALVE	1	150 GATE VALVE	EA	INV = 29.770
250 x 250 x 150 TEE	1	250 x 250 x 150 TEE	EA	
250 PVC WM	1	250 PVC WM	M	
150 GATE VALVE	1	150 GATE VALVE	EA	INV = 29.770
ROBAR COUPLING	1	ROBAR COUPLING	EA	
250 PVC WM	1	250 PVC WM	M	
150 GATE VALVE	1	150 GATE VALVE	EA	INV = 29.770
250 x 250 x 150 TEE	1	250 x 250 x 150 TEE	EA	
250 PVC WM	1	250 PVC WM	M	
150 GATE VALVE	1	150 GATE VALVE	EA	INV = 29.770
ROBAR COUPLING	1	ROBAR COUPLING	EA	
250 PVC WM	1	250 PVC WM	M	
150 GATE VALVE	1	150 GATE VALVE	EA	INV = 29.770
250 x 250 x 150 TEE	1	250 x 250 x 150 TEE	EA	
250 PVC WM	1	250 PVC WM	M	
150 GATE VALVE	1	150 GATE VALVE	EA	INV = 29.770
ROBAR COUPLING	1	ROBAR COUPLING	EA	
250 PVC WM	1	250 PVC WM	M	
150 GATE VALVE	1	150 GATE VALVE	EA	INV = 29.770
250 x 250 x 150 TEE	1	250 x 250 x 150 TEE	EA	
250 PVC WM	1	250 PVC WM	M	
150 GATE VALVE	1	150 GATE VALVE	EA	INV = 29.770
ROBAR COUPLING	1	ROBAR COUPLING	EA	
250 PVC WM	1	250 PVC WM	M	
150 GATE VALVE	1	150 GATE VALVE	EA	INV = 29.770
250 x 250 x 150 TEE	1	250 x 250 x 150 TEE	EA	
250 PVC WM	1	250 PVC WM	M	
150 GATE VALVE	1	150 GATE VALVE	EA	INV = 29.770
ROBAR COUPLING	1	ROBAR COUPLING	EA	
250 PVC WM	1	250 PVC WM	M	
150 GATE VALVE	1	150 GATE VALVE	EA	INV = 29.770
250 x 250 x 150 TEE	1	250 x 250 x 150 TEE	EA	
250 PVC WM	1	250 PVC WM	M	
150 GATE VALVE	1	150 GATE VALVE	EA	INV = 29.770
ROBAR COUPLING	1	ROBAR COUPLING	EA	
250 PVC WM	1	250 PVC WM	M	
150 GATE VALVE	1	150 GATE VALVE	EA	INV = 29.770
250 x 250 x 150 TEE	1	250 x 250 x 150 TEE	EA	
250 PVC WM	1	250 PVC WM	M	
150 GATE VALVE	1	150 GATE VALVE	EA	INV = 29.770
ROBAR COUPLING	1	ROBAR COUPLING	EA	
250 PVC WM	1	250 PVC WM	M	
150 GATE VALVE	1	150 GATE VALVE	EA	INV = 29.770
250 x 250 x 150 TEE	1	250 x 250 x 150 TEE	EA	
250 PVC WM	1	250 PVC WM	M	
150 GATE VALVE	1	150 GATE VALVE	EA	INV = 29.770
ROBAR COUPLING	1	ROBAR COUPLING	EA	
250 PVC WM	1	250 PVC WM	M	
150 GATE VALVE	1	150 GATE VALVE	EA	INV = 29.770
250 x 250 x 150 TEE	1	250 x 250 x 150 TEE	EA	
250 PVC WM	1	250 PVC WM	M	
150 GATE VALVE	1	150 GATE VALVE	EA	INV = 29.770
ROBAR COUPLING	1	ROBAR COUPLING	EA	
250 PVC WM	1	250 PVC WM	M	
150 GATE VALVE	1	150 GATE VALVE	EA	INV = 29.770
250 x 250 x 150 TEE	1	250 x 250 x 150 TEE	EA	
250 PVC WM	1	250 PVC WM	M	
150 GATE VALVE	1	150 GATE VALVE	EA	INV = 29.770
ROBAR COUPLING	1	ROBAR COUPLING	EA	
250 PVC WM	1	250 PVC WM	M	
150 GATE VALVE	1	150 GATE VALVE	EA	INV = 29.770
250 x 250 x 150 TEE	1	250 x 250 x 150 TEE	EA	
250 PVC WM	1	250 PVC WM	M	
150 GATE VALVE	1	150 GATE VALVE	EA	INV = 29.770
ROBAR COUPLING	1	ROBAR COUPLING	EA	
250 PVC WM	1	250 PVC WM	M	
150 GATE VALVE	1	150 GATE VALVE	EA	INV = 29.770
250 x 250 x 150 TEE	1	250 x 250 x 150 TEE	EA	
250 PVC WM	1	250 PVC WM	M	
150 GATE VALVE	1	150 GATE VALVE	EA	INV = 29.770
ROBAR COUPLING	1	ROBAR COUPLING	EA	
250 PVC WM	1	250 PVC WM	M	
150 GATE VALVE	1	150 GATE VALVE	EA	INV = 29.770
250 x 250 x 150 TEE	1	250 x 250 x 150 TEE	EA	
250 PVC WM	1	250 PVC WM	M	
150 GATE VALVE	1	150 GATE VALVE	EA	INV = 29.77

**APPENDIX H**  
**GEOLOGY AND HYDROGEOLOGY**

**ANNEX H-1**  
**REGIONAL GEOLOGY**

B  
Southwest

B'  
Northeast



\\01609\active\11207170\_RM\_East\_St\_Paul\planning\drawing\April 2005\11207170\_xsecBB.dwg  
005-05-02 01:56PM By: BCooper

Vertical Scale = 15x Horizontal Scale = 1:50



**Legend**

- |        |                     |                                      |
|--------|---------------------|--------------------------------------|
| TW1-04 | Well ID             | Clay                                 |
| CLAY   | Stratigraphy        | Overburden Aquifer (Sand and Gravel) |
| ▲      | Static Water Level  | Till                                 |
| ▼      | Pumping Water Level | Upper Carbonate Aquifer              |
| ■      | Screen              | Carbonate Bedrock                    |

**Notes**

- For location of Cross-Section B-B' see Figure 2.

Client/Project  
Rural Municipality of East St. Paul

Construction and Testing  
of Production Well PW8

Figure No.

5

**Cross-Section B-B'**

April 2005  
1112-207170

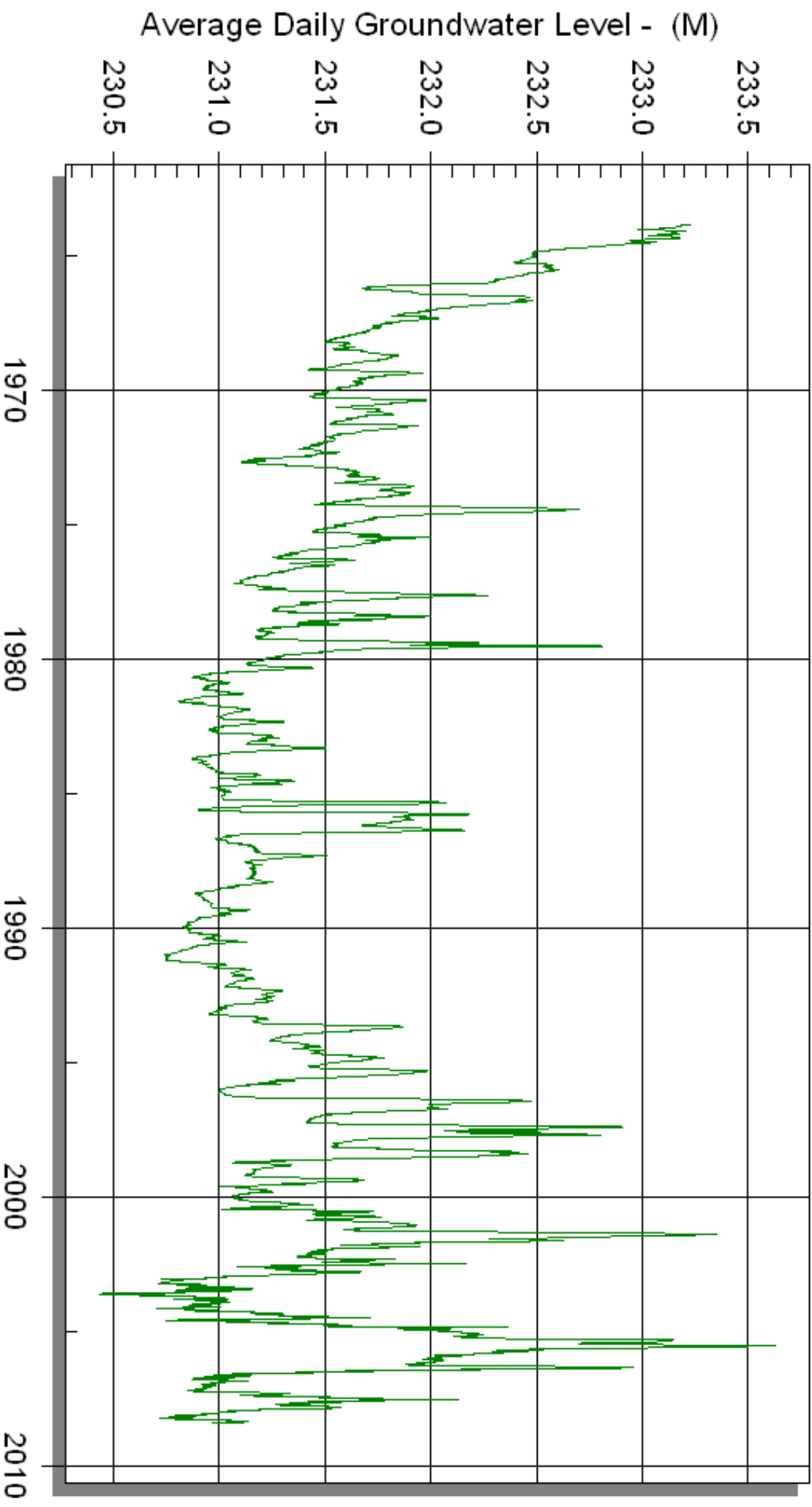


**ANNEX H-2**

**PROVINCIAL OVERBURDEN MONITORING WELL HYDROGRAPHS G050J148, G050J006**

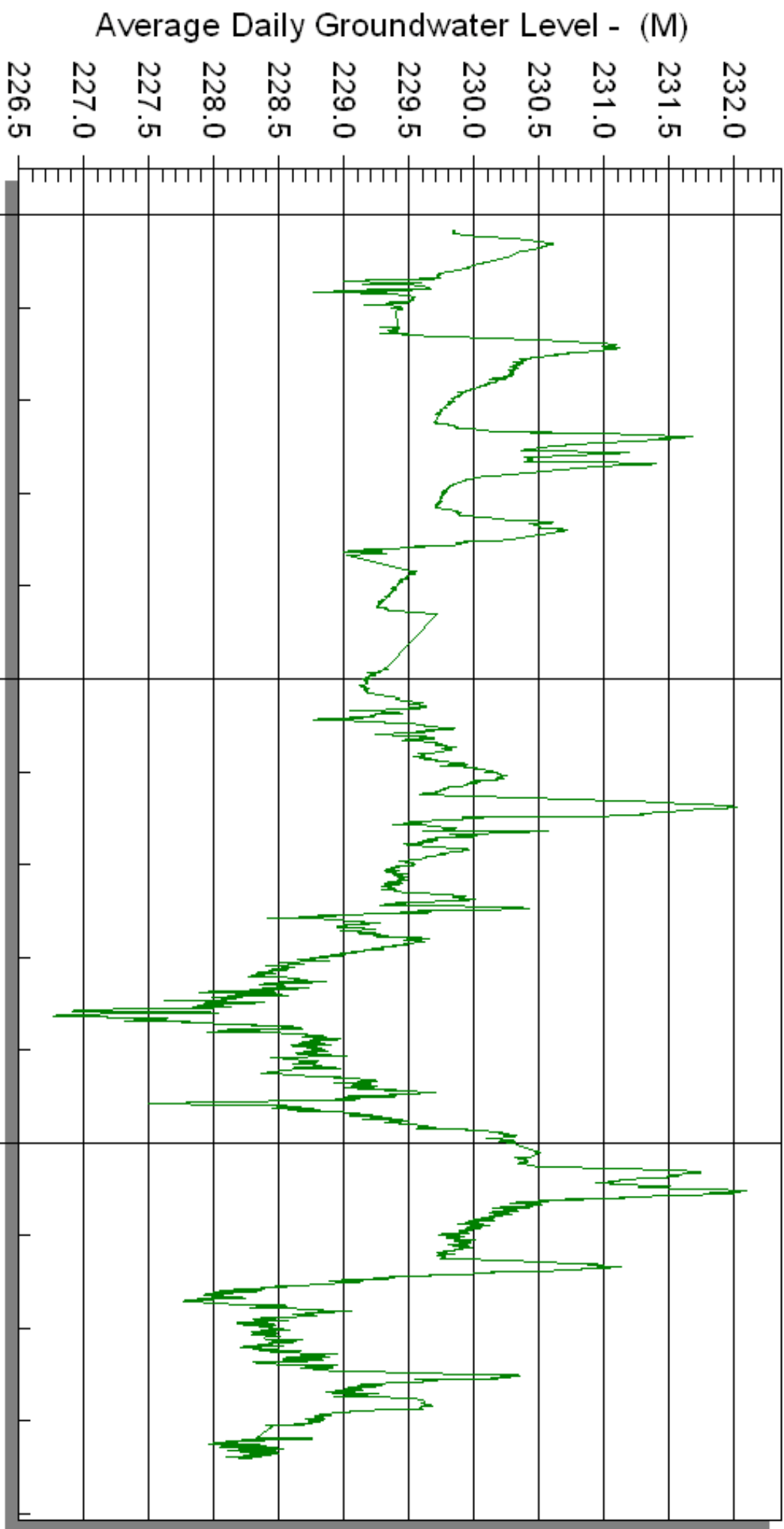
# G050J006 RED R FLOODWAY 048 SW/34-11-04E

GROUND LEVEL ELEVATION 242.030 METRES (794.06 FEET)



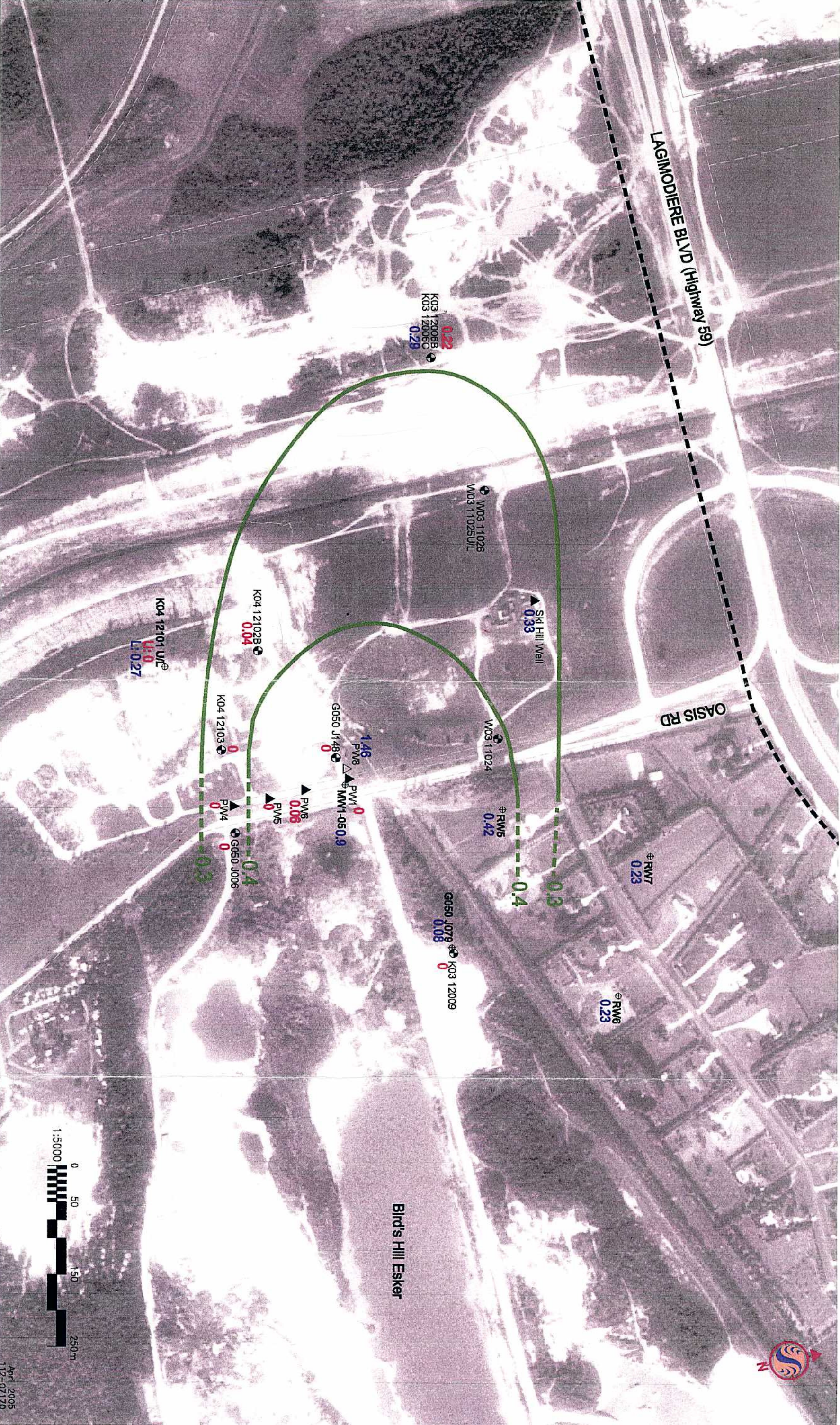
Prepared by Manitoba Water Stewardship 22 Jul 2008

**G050J148 SKI HILL #1 SE33--11-04E**  
**GROUND LEVEL ELEVATION 242.577 METRES (795.86 FEET)**



Prepared by Manitoba Water Stewardship 22 Jul 2008

**ANNEX H-3**  
**GROUNDWATER DRAWDOWN OASIS ROAD**



- Legend**
- ▲ PWS Municipal Supply Well
  - △ TWM-04 Pumping Well (Bedrock)
  - ⊕ MW-04 Monitoring Well (bedrock)
  - ⊕ K03 12009 Monitoring Well (overburden)
  - Municipal Boundary
  - 0.22 Drawdown in Overburden Well (m)
  - 0.29 Drawdown in Bedrock Well (m)
  - 0.3 Drawdown in Bedrock Aquifer (m)

**Notes**  
 Drawdown due to pumping of P06 for 72 hours at 20L/s.



Client/Project: Rural Municipality of East St. Paul  
 Construction and Testing of Production Well P06  
 Figure No. 8  
 Title: Constant Rate Pumping Test Results - Observed Drawdown  
 April 2005  
 112-07170



**ANNEX H-4**

**PREDICTED DRAWDOWN WENZEL STREET (PW7)**

**ANNEX H-4-1**  
**PW7 PUMP TEST RESULTS**

**WATER SUPPLY ASSESSMENT  
EAST ST. PAUL, MANITOBA**

**Prepared for:**

Rural Municipality of East St. Paul  
3021 Bird's Hill Road  
East St. Paul, Manitoba  
R2E 1A7

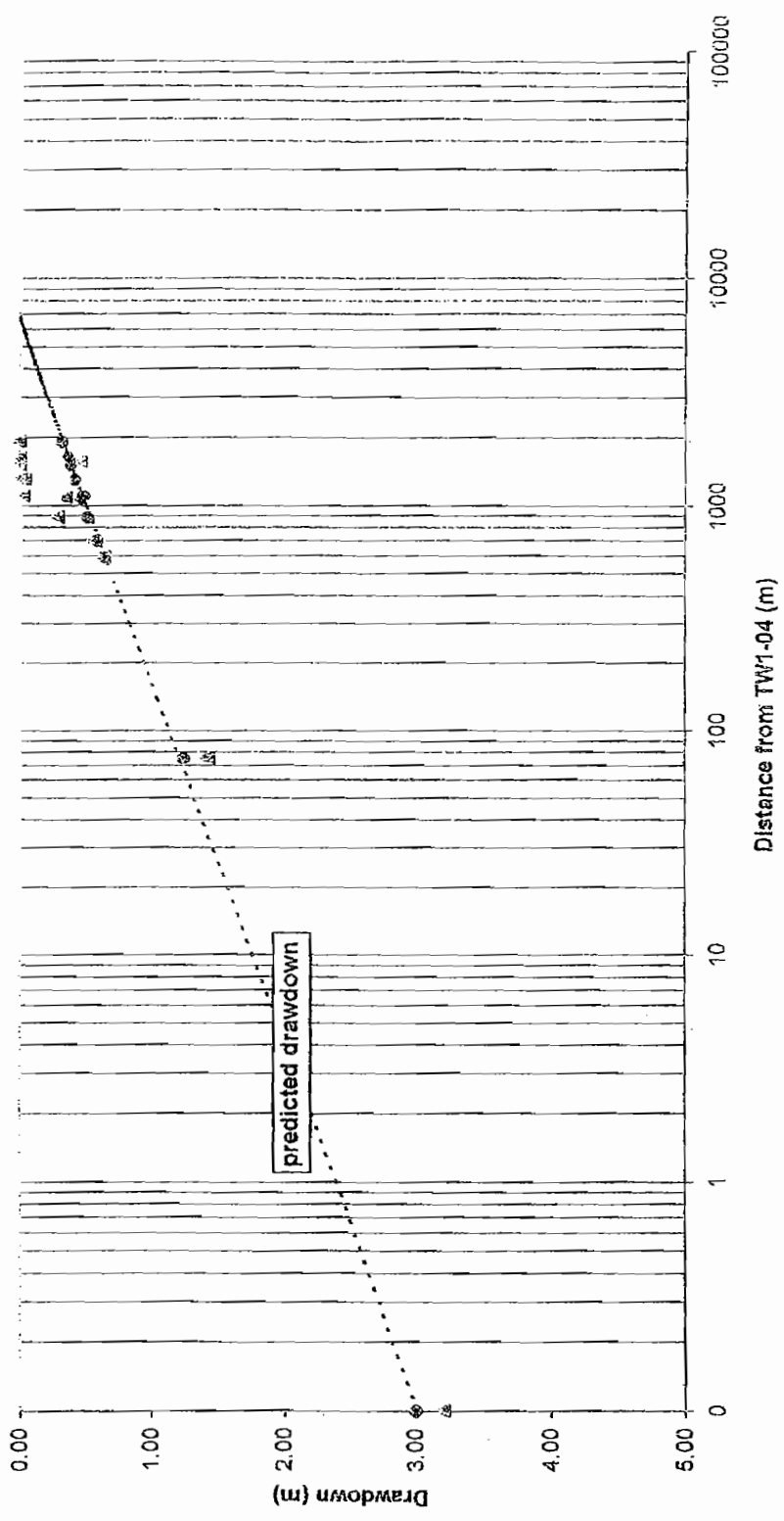
**Prepared by:**

Stantec Consulting Ltd.  
49 Frederick Street  
Kitchener, ON N2H 6M7

1112-07170  
April 2004



**Stantec**



▲ observed drawdown      ● predicted drawdown

Notes:  
 Drawdown due to pumping of TW1-04 at 26 L/s for 48 hours  
 - - - - - Predicted Drawdown

RURAL MUNICIPALITY OF EAST ST. PAUL WATER SUPPLY ASSESSMENT	
Distance Drawdown Response	
DATE: 17-Nov-03	PROJECT No: 111207170
SCALE: not to scale	FIGURE No: 8

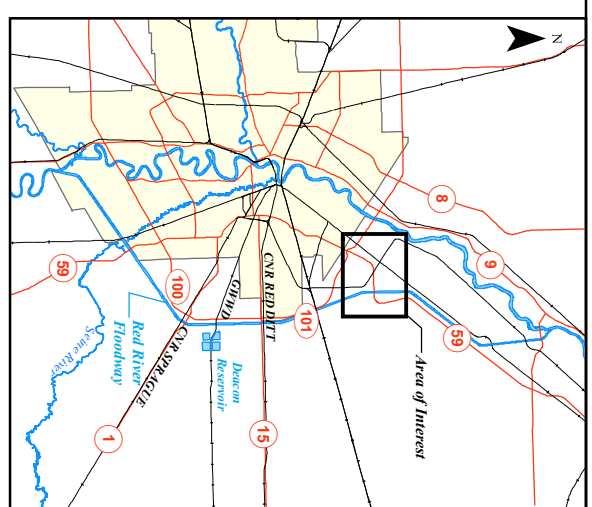
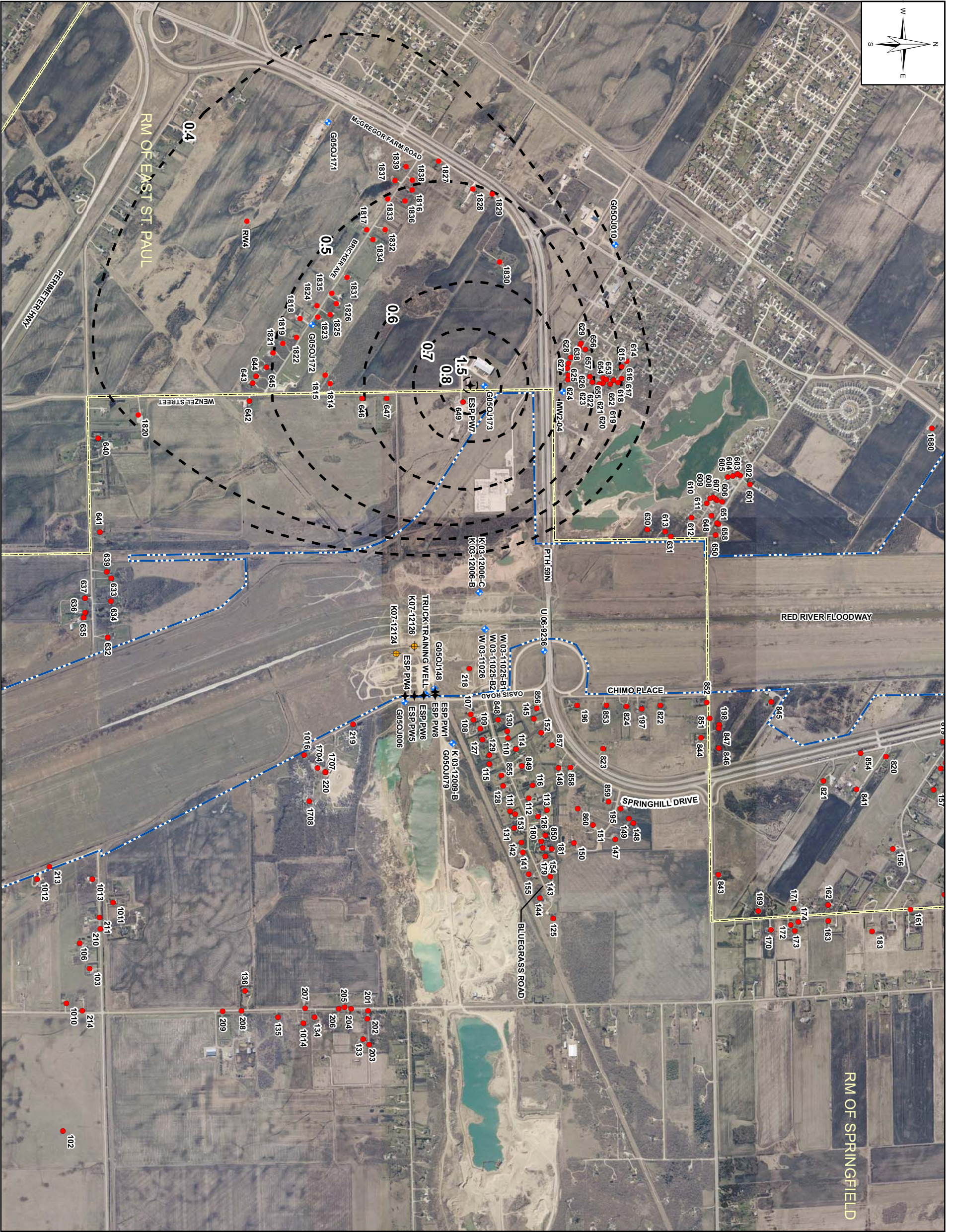


**Table 5  
Observed and Predicted Drawdown**

Monitoring Well ID GSD Study	Radial Distance from TW1-04 (m)	Radial Distance from RW1 (m)	Observed Drawdown 48 hours TW1-04 to Ua (m)	Predicted Drawdown 48 hours TW1-04 to Ua (m)	Scenario 1	Scenario 2	Worst Case Predicted Drawdown (m)
					Predicted Drawdown 20 years - TW1-04 to Ua (m)	Predicted Drawdown TW1-04 to RW6 to 9 Ua 1 months (m)	
<b>Test Well</b>							
TW1-04	0	1567	3.20	3.00	0.77	2.15	2.92
<b>Bedrock Monitoring Wells</b>							
K03 12006 C	1108	2415	0.03	0.50	-	-	-
W03 11025 U	1304	2596	0.02	0.43	-	-	-
W03 11025 L	1304	2596	0.04	0.43	-	-	-
G050 J010	1079	2054	0.36	0.48	0.31	0.76	1.07
G050 J014	1633	2754	-	0.38	-	-	-
G050 J079	1914	3060	-	0.33	-	-	-
G050 J082	1519	2759	-	0.4	-	-	-
MW1-04	75	1629	1.43	1.25	0.45	1.20	1.65
RW1	593	1256	0.65	0.65	0.34	0.90	1.24
RW2	699	2145	-	0.60	0.33	0.83	1.16
RW3	892	2061	0.30	0.53	0.32	0.79	1.10
RW4	1567	0	0.47	0.40	0.29	1.38	1.67

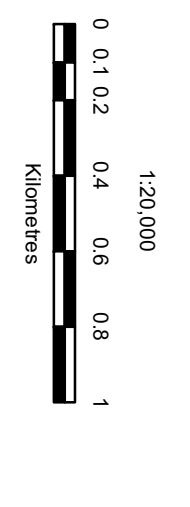
**ANNEX H-4-2**

**PW7 PREDICTED AREA DRAWDOWN**



- Domestic Wells
- Monitoring Wells
- Bedrock Depressurization Well
- Municipal Wells
- Well Identification Number
- RM Boundaries
- Floodway Right of Way Limits
- Estimated Drawdown Contour

- Notes:
1. Reference - Manitoba Floodway Authority Drawing HM34-3.
  2. Other residences can be seen on the air photo.
  3. Estimated drawdown based on transmissivity of 100,000 USgpd/ft, storativity of  $1.4 \times 10^{-4}$ , pumping rate of 15 litres/sec (238 USgpm) and a duration of 30 days.
  4. Drawdown adjusted from theoretical to the north and east based on pumping test results.



All units are metric and in metres unless otherwise specified.  
 Universal Transverse Mercator Projection, NAD 1983, Zone 14  
 Elevations are in metres above sea level (MSL)

**KGS GROUP**

**WELL PW7 WATER RIGHTS LICENSING**

PREDICTED MAXIMUM DRAWDOWN  
 IN BEDROCK AQUIFER FROM CONTINUOUS  
 USE OF R.M. OF EAST ST. PAUL WELL PW7 AT 15L/sec

**APPENDIX I**  
**CORRESPONDANCE**

**ANNEX I-1**

**MANITOBA CONSERVATION DATA CENTRE**

**Ganga Atmuri**

---

**From:** "Firlotte, Nicole (CON)" <Nicole.Firlotte@gov.mb.ca>  
**To:** "Ganga Atmuri" <GAtmuri@kgsgroup.com>  
**Sent:** Wednesday, June 11, 2008 11:47 AM  
**Subject:** RE: Information Request Form - Environment Act Proposal for R.M. of East St. Paul Wells PW7 and PW8

There were no occurrences found in our database at this time for either location you indicated.

The information provided in this letter is based on existing data known to the Manitoba Conservation Data Centre at the time of the request. These data are dependent on the research and observations of CDC staff and others who have shared their data, and reflect our current state of knowledge. An absence of data in any particular geographic area does not necessarily mean that species or ecological communities of concern are not present; in many areas, comprehensive surveys have never been completed. Therefore, this information should be regarded neither as a final statement on the occurrence of any species of concern, nor as a substitute for on-site surveys for species as part of environmental assessments. Also, because the Manitoba CDC's Biotics database is continually updated and because information requests are evaluated by type of action, any given response is only appropriate for its respective request.

Please contact the Manitoba CDC for an update on this natural heritage information if more than six months pass before it is utilized.

Third party requests for products wholly or partially derived from Biotics must be approved by the Manitoba CDC before information is released. Once approved, the primary user will identify the Manitoba CDC as data contributors on any map or publication using Biotics data, as follows as: Data developed by the Manitoba Conservation Data Centre; Wildlife and Ecosystem Protection Branch, Manitoba Conservation.

We would be interested in receiving a copy of the results of any field surveys that you may undertake, to update our database with the most current knowledge of the area.

If you have any questions or require further information please do not hesitate to contact me directly at (204) 945- 6998.

Nicole Firlotte  
Biodiversity Information Manager  
Biodiversity Conservation Section  
Wildlife and Ecosystem Protection Branch  
Manitoba Conservation  
Box 24, 200 Saulteaux Crescent  
Winnipeg, MB R3J 3W3  
204-945-6998 work  
204-945-3077 fax  
Note new email: [nicole.firlotte@gov.mb.ca](mailto:nicole.firlotte@gov.mb.ca)



Please consider the environment before printing this e-mail

-----Original Message-----

From: Ganga Atmuri [mailto:[GAtmuri@kgsgroup.com](mailto:GAtmuri@kgsgroup.com)]  
Sent: Tuesday, June 10, 2008 10:43 AM  
To: Firlotte, Nicole (CON)  
Subject: Re: Information Request Form – Environment Act Proposal for R.M. of East St. Paul Wells PW7 and PW8

Good Morning Nicole,

Thank you for the message. Please find attached the map with the two subject areas circled. I was having issues faxing the map again this morning.

Regards,  
Ganga

----- Original Message -----

From: "Firlotte, Nicole (CON)" <[Nicole.Firlotte@gov.mb.ca](mailto:Nicole.Firlotte@gov.mb.ca)>  
To: <[GAtmuri@kgsgroup.com](mailto:GAtmuri@kgsgroup.com)>  
Sent: Tuesday, June 10, 2008 10:25 AM  
Subject: RE: Information Request Form – Environment Act Proposal for R.M. of East St. Paul Wells PW7 and PW8

**ANNEX I-2**

**MANITOBA CULTURE, HERITAGE AND TOURISM**

DATE: June 20, 2008

TO: Ganga Atmuri  
KGS Group  
3<sup>rd</sup> Floor-865 Waverley St.  
Winnipeg MB

FROM: Gordon Hill  
Impact Assessment  
Archaeologist  
Historic Resources  
Branch  
Main Floor 213 Notre  
Dame Avenue  
Winnipeg MB  
R3B 1N3  
PHONE NO: (204) 945-7730

SUBJECT: HERITAGE RESOURCES

YOUR FILE:

HRB FILE:

EAST ST. PAUL WELLS  
PW7 &PW8

In response to your memo regarding the above-noted proposed project, I have examined Branch records for areas of potential concern. The potential to impact significant heritage resources is low, and, therefore, the Historic Resources Branch has no concerns with the project.

If at any time however, significant heritage resources are recorded in association with these lands during development, the Historic Resources Branch may require that an acceptable heritage resource management strategy be implemented by the developer to mitigate the affects of development on the heritage resources.

If you have any questions or comments, please contact me at 945-7730.

C. Gordon Hill

**ANNEX I-3**

**MANITOBA CONSERVATIONS FISHERIES BRANCH**

# FIHCS - Biological



Manitoba  
Conservation  
Fisheries Branch

## Waterbody: Red River Floodway

Waterbody Number	Watershed Unit	Region	District	Map Sheet	Latitude / Longitude	Date Created	Date Modified
2747	5 O J D	Central	Birds Hill	62102	50 5 26 96 56 1	1990-03-19	2006-07-07

Contact: Martin Erickson

### BLACK CRAPPIE

Class Non-Sport  
Use Migration Route

Presence: Common

### BROOK STICKLEBACK

Class Non-Sport  
Use Migration Route

Presence: Common

### BROWN BULLHEAD

Class Non-Sport  
Use Migration Route

Presence: Common

### EMERALD SHINER

Class Non-Sport  
Use Migration Route

Presence: Common

### FATHEAD MINNOW

Class Non-Sport  
Use Migration Route

Presence: Common

### FRESHWATER DRUM

Class Non-Sport  
Use Migration Route

Presence: Common

### GOLDEYE

Class Non-Sport  
Use Migration Route

Presence: Common

### NINESPINE STICKLEBACK

Class Non-Sport  
Use Migration Route

Presence: Common

### RIVER DARTER

Class Non-Sport  
Use Migration Route

Presence: Common

### SAUGER

Class Non-Sport  
Use Migration Route

Presence: Common

### TROUT PERCH

Class Non-Sport  
Use Migration Route

Presence: Common

### WALLEYE

Class Non-Sport  
Use Migration Route

Presence: Common



**WHITE SUCKER**

**Class** Non-Sport  
**Use** Migration Route

**Presence:** Common

**YELLOW PERCH**

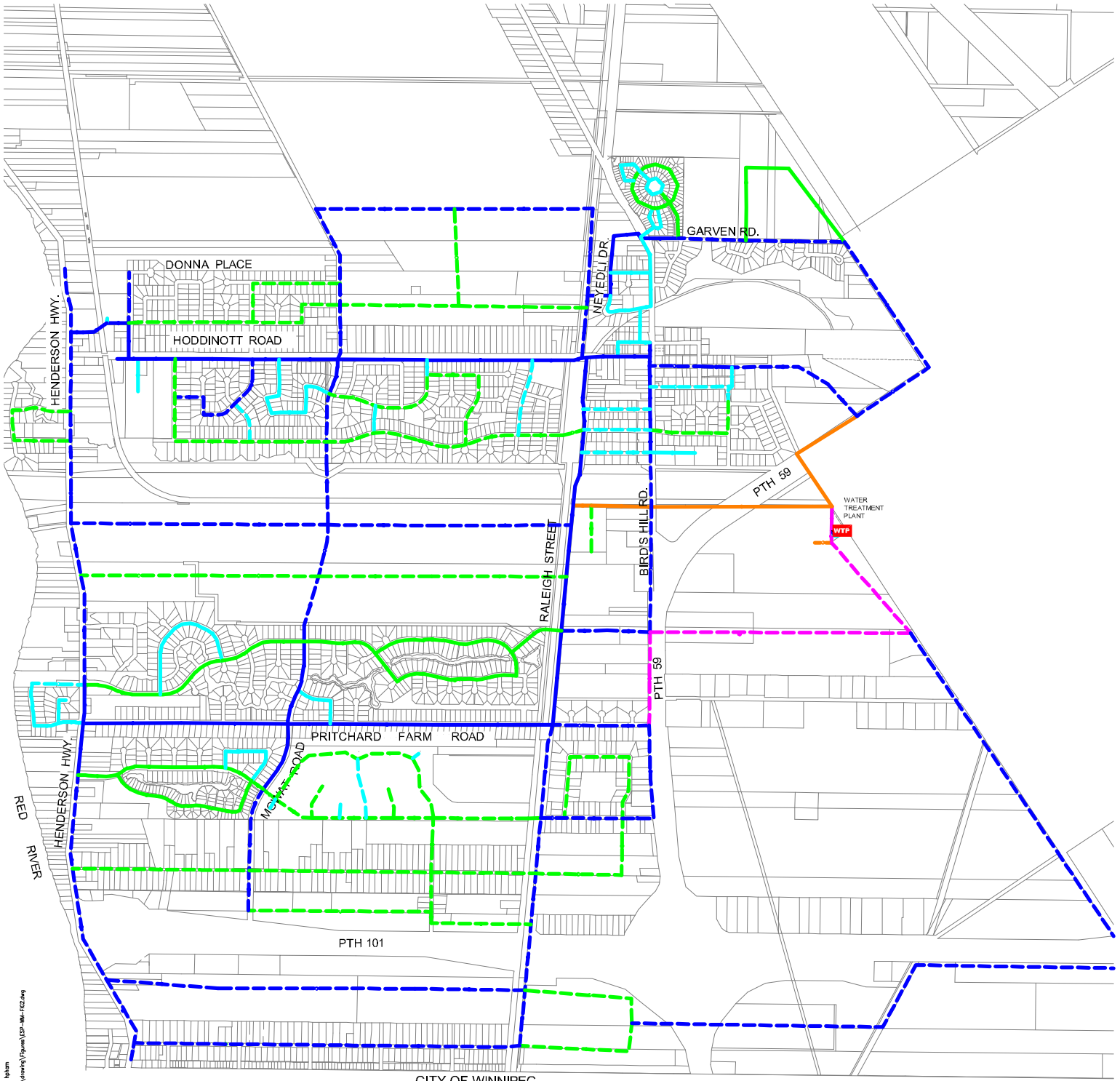
**Class** Non-Sport  
**Use** Migration Route

**Presence:** Common



**APPENDIX J**  
**PROPOSED FUTURE DEVELOPMENT**

**ANNEX J-1**  
**PROPOSED WATER DISTRIBUTION, PLAN**



2008-02-14 04:59M By: hplm  
 \\1112\estpa\11120800\Urban\Plan\ESP-08-02.dwg



FUTURE	LEGEND	EXISTING
	350 WM	
	300 WM	
	250 WM	
	200 WM	
	150 WM	
	WATER TREATMENT PLANT (WTP)	

Client/Project  
 R.M. OF EAST ST. PAUL  
 WATER DISTRIBUTION  
 MASTER PLAN

Figure No.  
**3.0**

Title  
**PROPOSED WATER DISTRIBUTION**