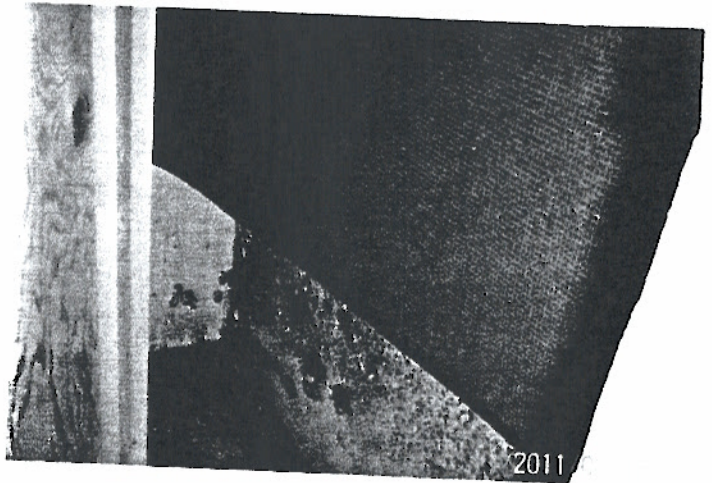
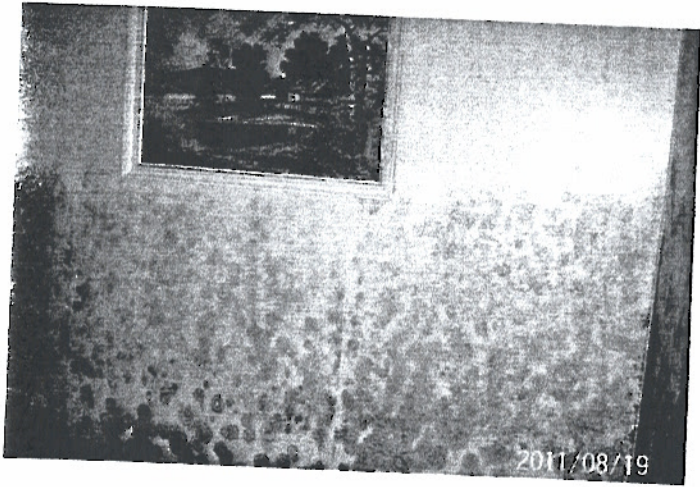
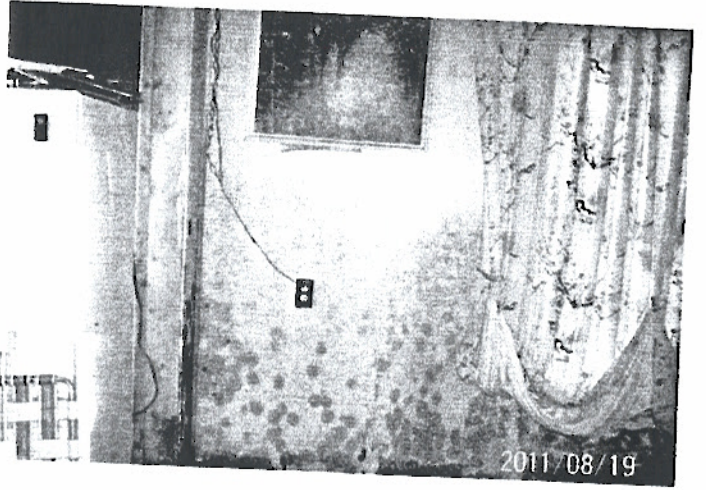
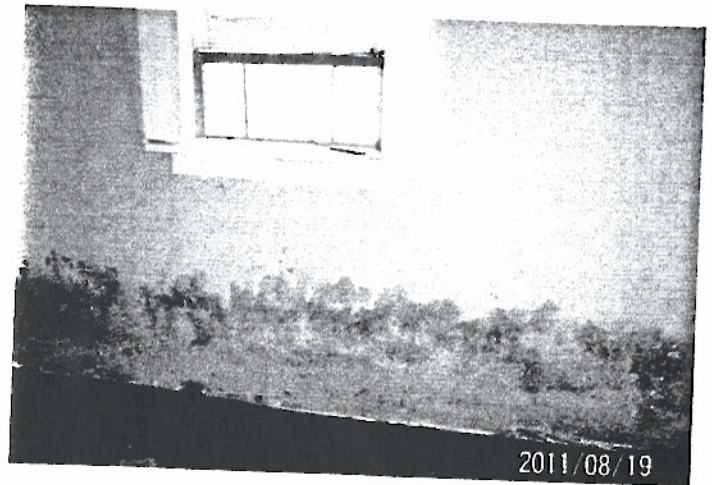
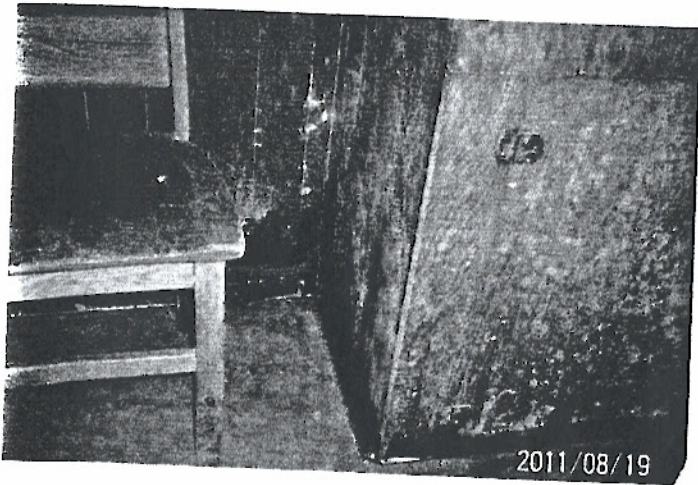
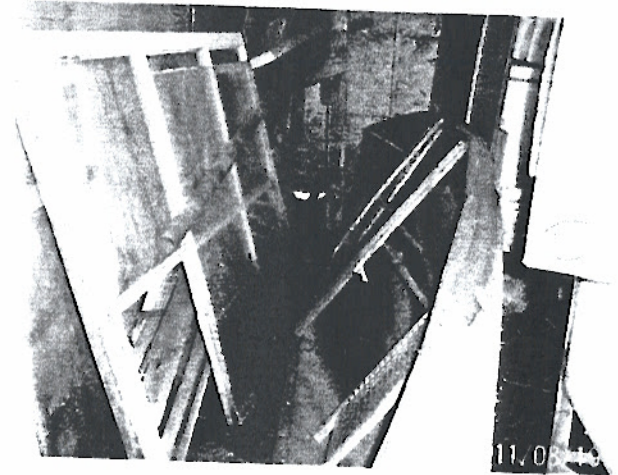


Due to flooding everything has been destroyed



who Reimburses us for our Loss.

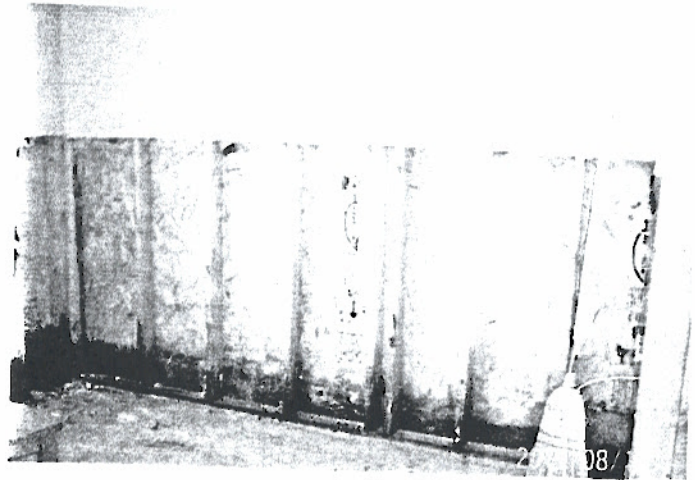
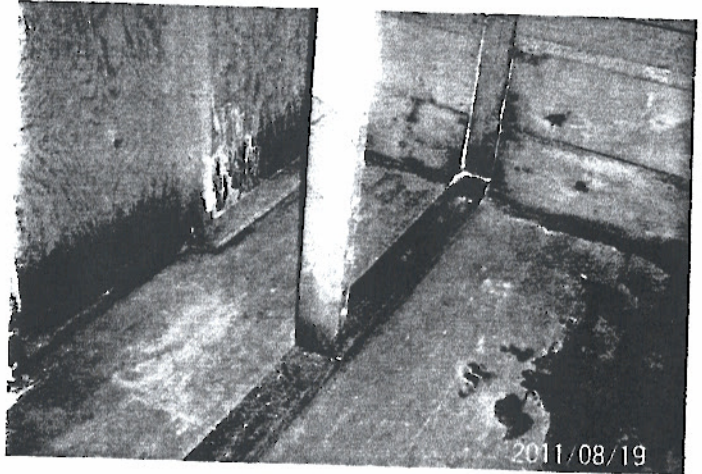
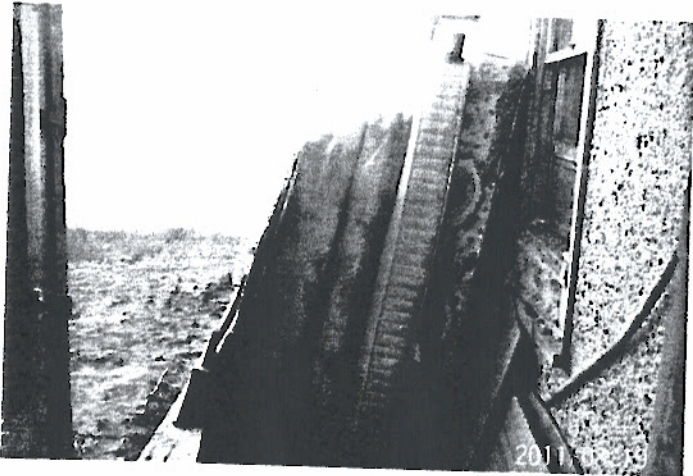
Due to flooding every <sup>has</sup> thing has been destroyed



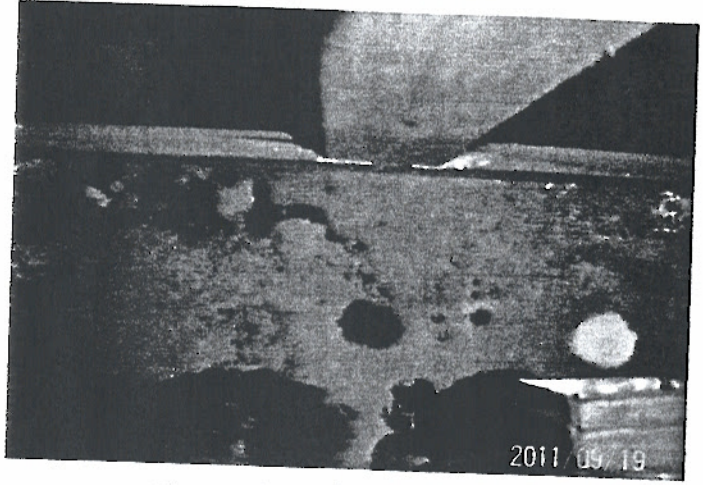
Who Reimburses us for our Loss?

3-

# Black Mold Everywhere

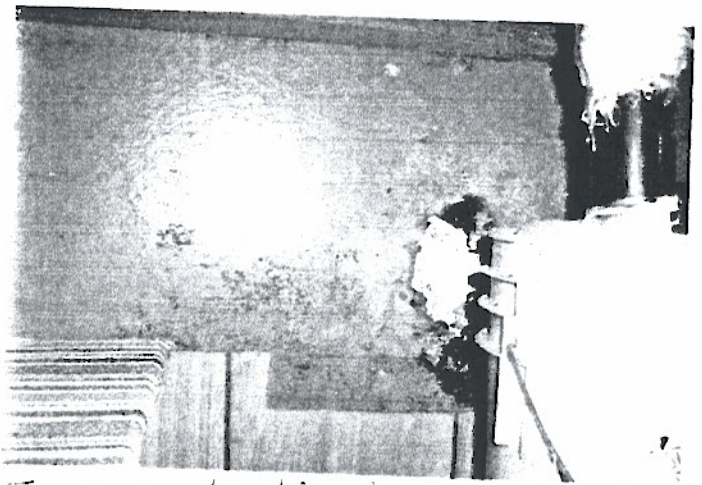
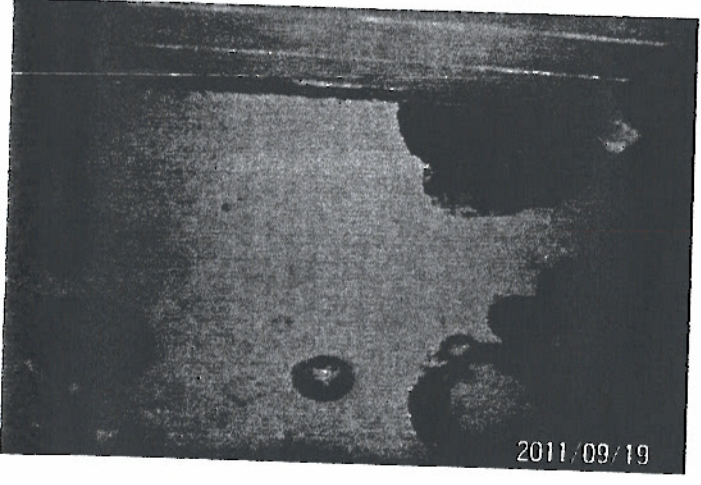


As a result of High Water, Structural Damage occurred and Mold damage Resulting in Cottage may to be destroyed.



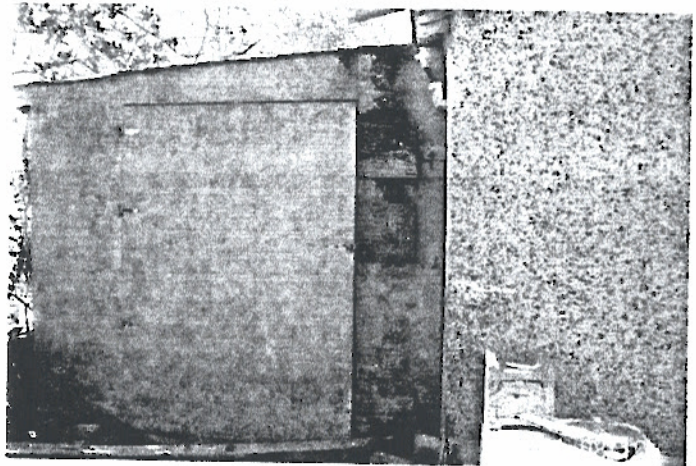
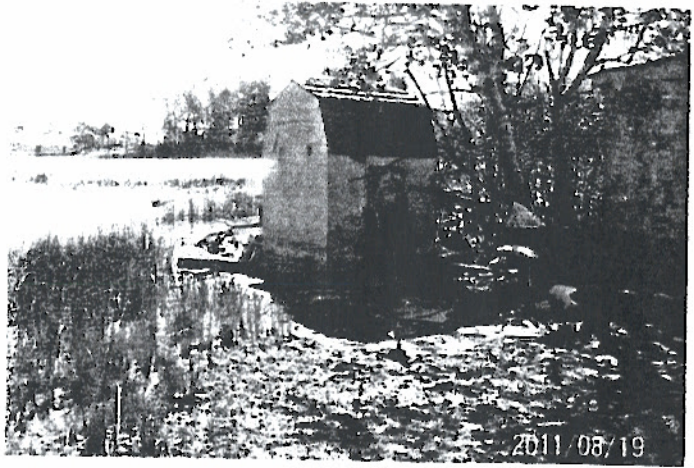
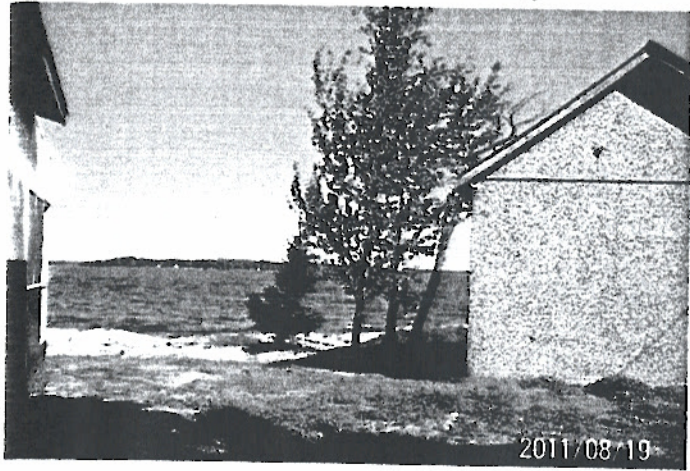
Structural Damage

Mold damage



We have owned this place for 25 yrs and this had never happened before 2010 due to opening up drainage and releasing water in south end of South East Lake. If the pro panel goes through this is a going problem.

Water level still high. Look existing drainage system out of Southport Lake into Oak River drainage system. Flooding will occur!!



Notice the water still all around collage. This was taken in August and Sept 9/11 the water still went around front of collage.