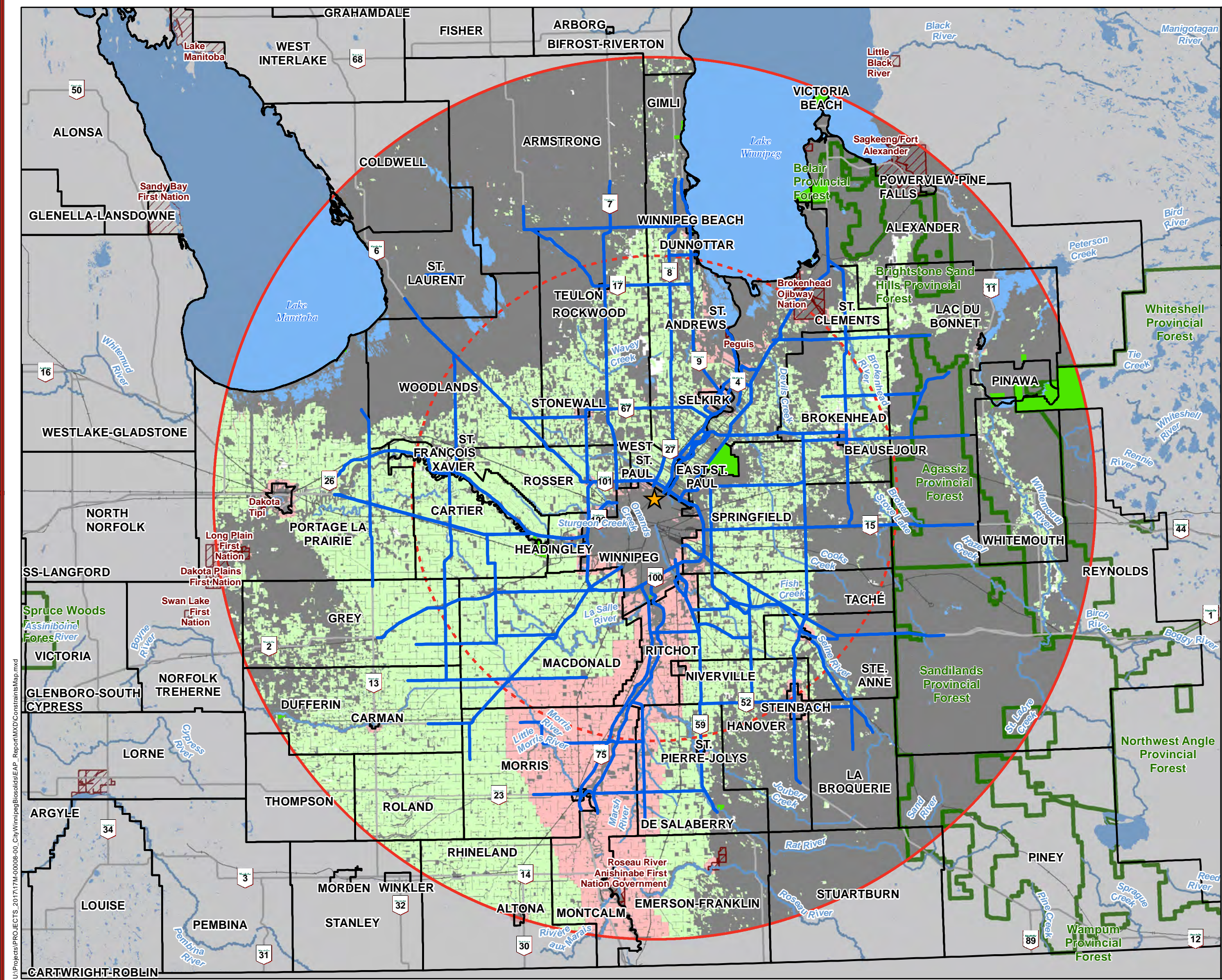


# APPENDIX

## A MAPS



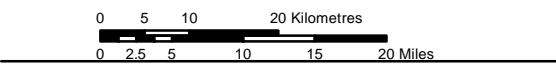




**CITY OF WINNIPEG  
BIOSOLIDS LAND APPLICATION  
17M-0008**

- Legend**
- ★ North End Sewage Treatment Plant Site Location
  - Red outline North End Sewage Treatment Plant 100km distance from site
  - Dashed red outline North End Sewage Treatment Plant 55km distance from site
  - Red hatched box First Nation
  - Black outline Rural Municipality
  - Green outline Provincial Forest
  - Blue outline Waterbody
  - Grey line Provincial Trunk
  - Black line Railway Line
- Constraint Areas Availability**
- Grey box Other Land Use / Land Cover
  - Light green box Agricultural Capability Available (Class 1 to 4)
  - Red box Unavailable Constraint Areas
- Distance From Site Highway Network 2017**
- Blue line RTAC Highway Network 100km from NEWPCC

Coordinate System: NAD 83, UTM Zone 14 N  
 Data Source: MLI, MMM, NRCan, Bing  
 Date Created: September 08, 2015  
 Revision Date: January 10, 2018

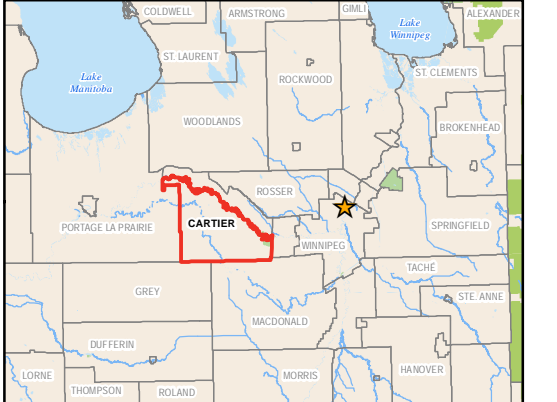
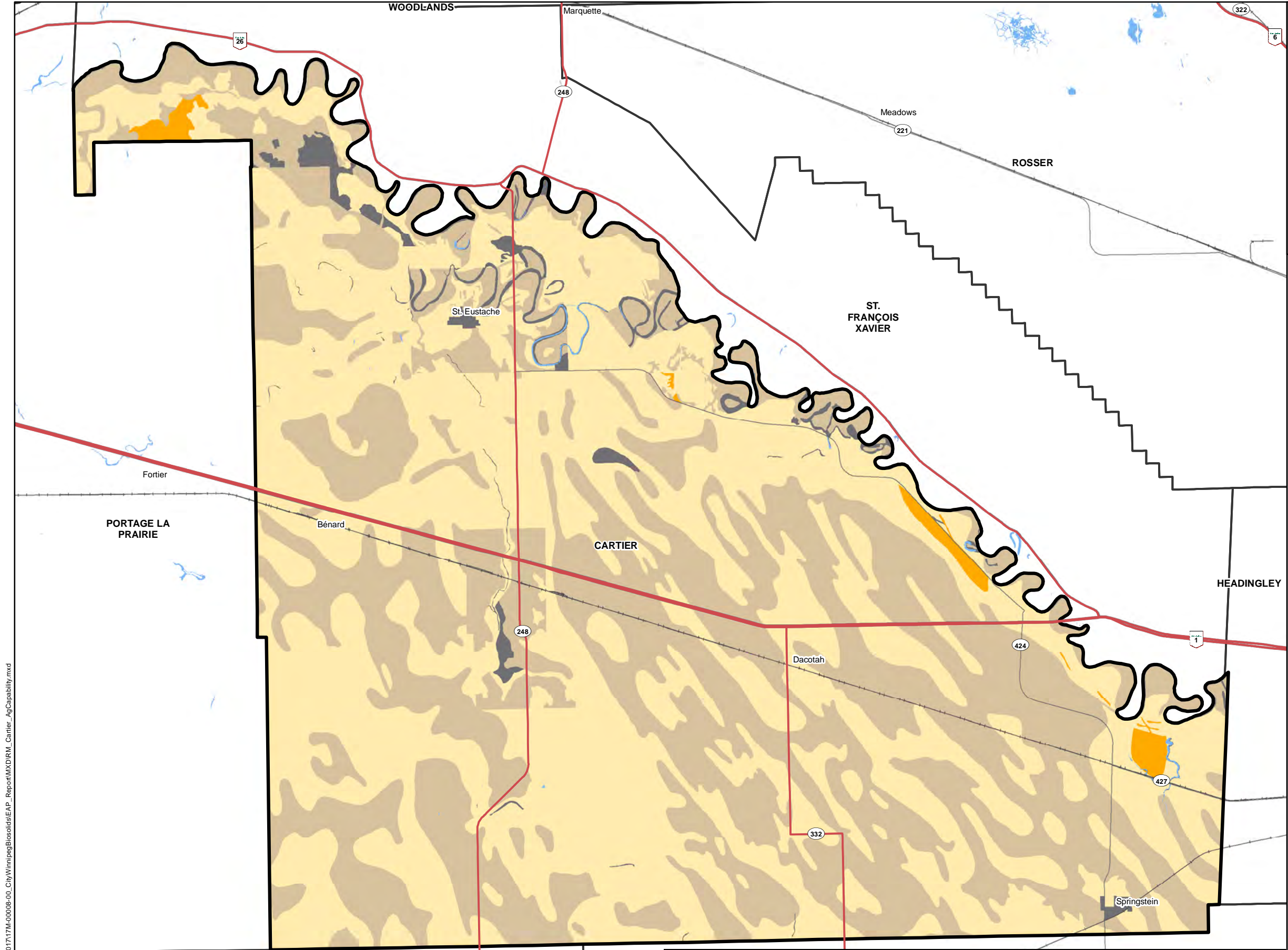


**MAP 1**

Available Highway Network Distances,  
 Annual Land Use / Cover and  
 Agricultural Capability Available -  
 (Class 1 to 4) within 100km



U:\Projects\PROJECTS\_2017\17M-00008-00\_CityWinnipegBiosolidsEAP\_Report\MXD\ConstraintsMap.mxd



**CITY OF WINNIPEG  
BIOSOLIDS LAND APPLICATION  
17M-00008**

- Legend**
- ★ North End Sewage Treatment Plant (NEWPCC)
  - Agricultural Capability**
  - Class 1
  - Class 2
  - Class 3
  - Class 4
  - Classes not included
  - Rural Municipality of Cartier
  - Waterbody
  - RTAC Highway Network
  - Provincial Trunk Highway
  - Provincial Road
  - Railway Line

Coordinate System: NAD 83, UTM Zone 14 N  
 Data Source: MLI, MMM, NRCan, Bing  
 Date Created: May 03, 2017  
 Revision Date: January 10, 2018

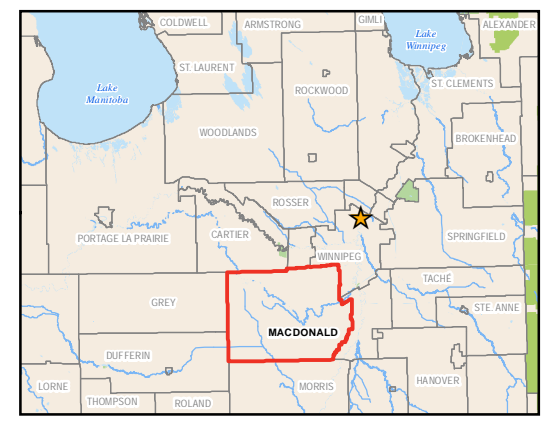
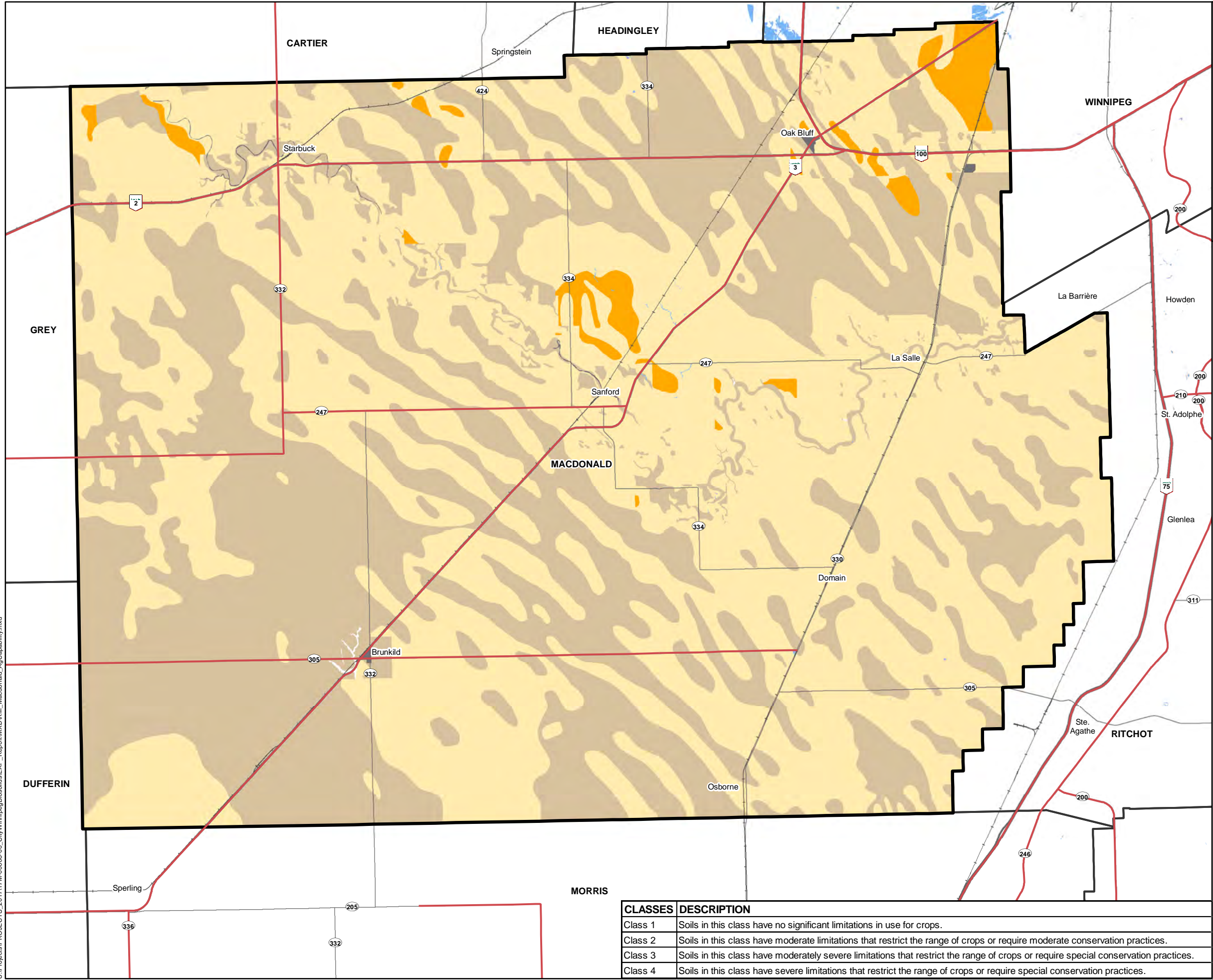
**MAP 2**  
 CLI Agricultural Capability  
 (Class 1 to 4) within RM of Cartier

CLASSES	DESCRIPTION
Class 1	Soils in this class have no significant limitations in use for crops.
Class 2	Soils in this class have moderate limitations that restrict the range of crops or require moderate conservation practices.
Class 3	Soils in this class have moderately severe limitations that restrict the range of crops or require special conservation practices.
Class 4	Soils in this class have severe limitations that restrict the range of crops or require special conservation practices.

U:\Projects\PROJECTS\_2017\17M-00008-00\_CityWinnipegBiosolids\EAP\_Report\MXD\IRM\_Cartier\_AgCapability.mxd



U:\Projects\PROJECTS\_2017\17M-00008-00\_CityWinnipegBiosolidsEAP\_Report\MXD\IRM\_Macdonald\_AgCapability.mxd



**CITY OF WINNIPEG  
BIOSOLIDS LAND APPLICATION  
17M-00008**

- Legend**
- ★ North End Sewage Treatment Plant (NEWPCC)
  - Agricultural Capability**
  - Class 1
  - Class 2
  - Class 3
  - Class 4
  - Classes not included
  - Rural Municipality of Macdonald
  - Waterbody
  - RTAC Highway Network
  - Provincial Trunk Highway
  - Provincial Road
  - Railway Line

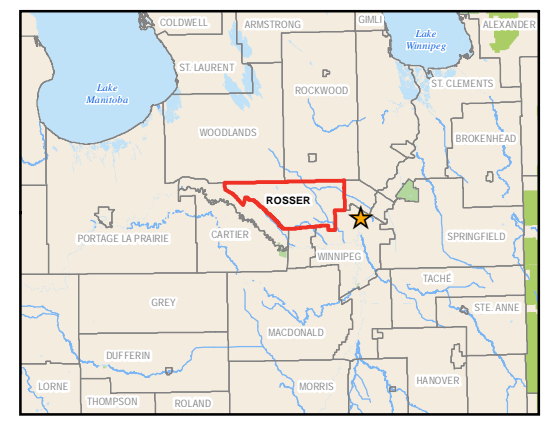
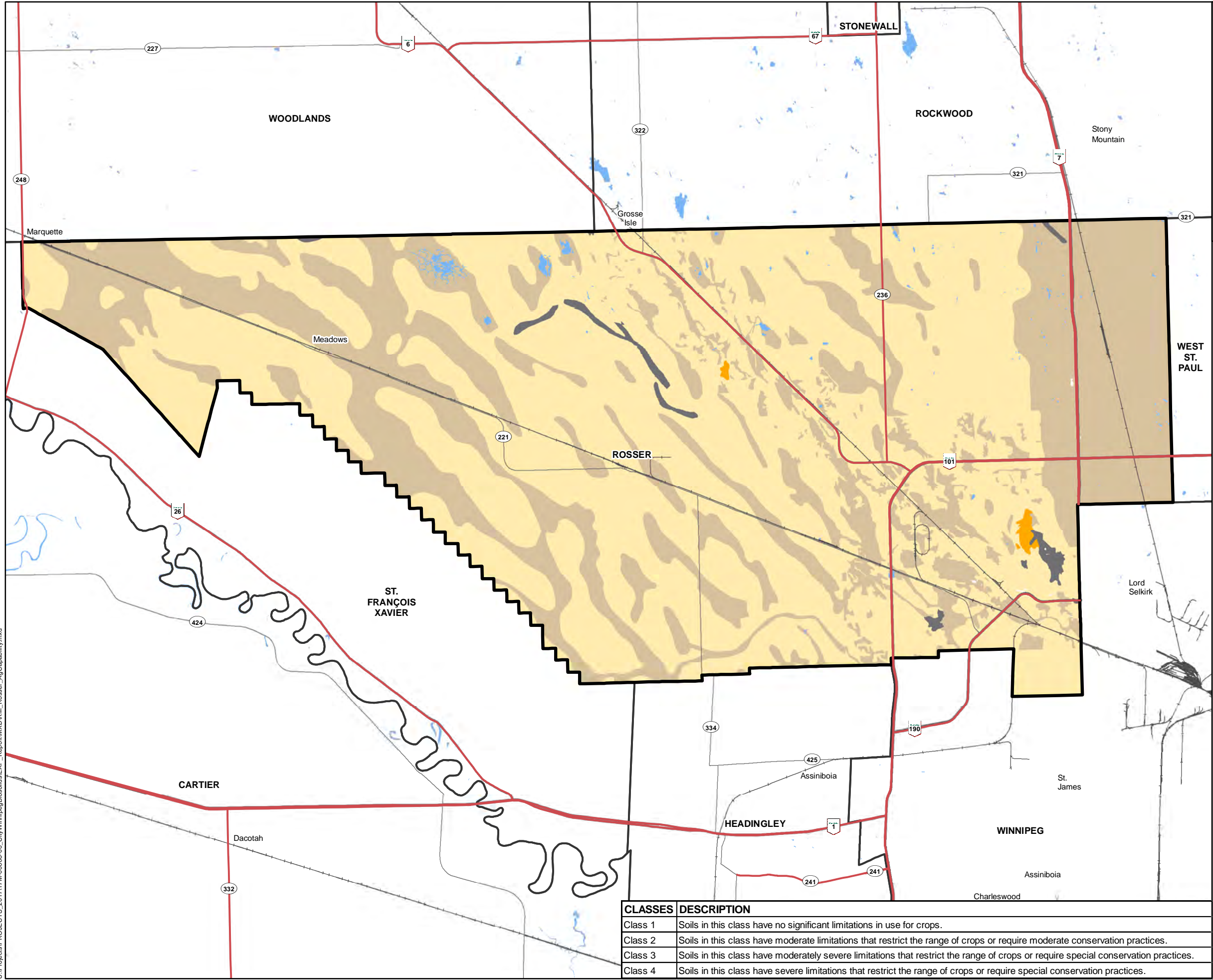
Coordinate System: NAD 83, UTM Zone 14 N  
 Data Source: MLI, MMM, NRCan, Bing  
 Date Created: May 03, 2017  
 Revision Date: January 10, 2018

**MAP 3**  
 CLI Agricultural Capability  
 (Class 1 to 4) within RM of Macdonald

CLASSES	DESCRIPTION
Class 1	Soils in this class have no significant limitations in use for crops.
Class 2	Soils in this class have moderate limitations that restrict the range of crops or require moderate conservation practices.
Class 3	Soils in this class have moderately severe limitations that restrict the range of crops or require special conservation practices.
Class 4	Soils in this class have severe limitations that restrict the range of crops or require special conservation practices.



U:\Projects\PROJECTS\_2017\17M-00008-00\_CityWinnipegBiosolidsEAP\_Report\MXD\IRM\_Rosser\_AgCapability.mxd



**CITY OF WINNIPEG  
BIOSOLIDS LAND APPLICATION  
17M-00008**

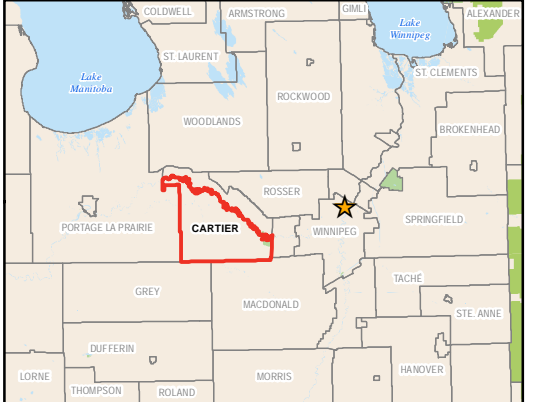
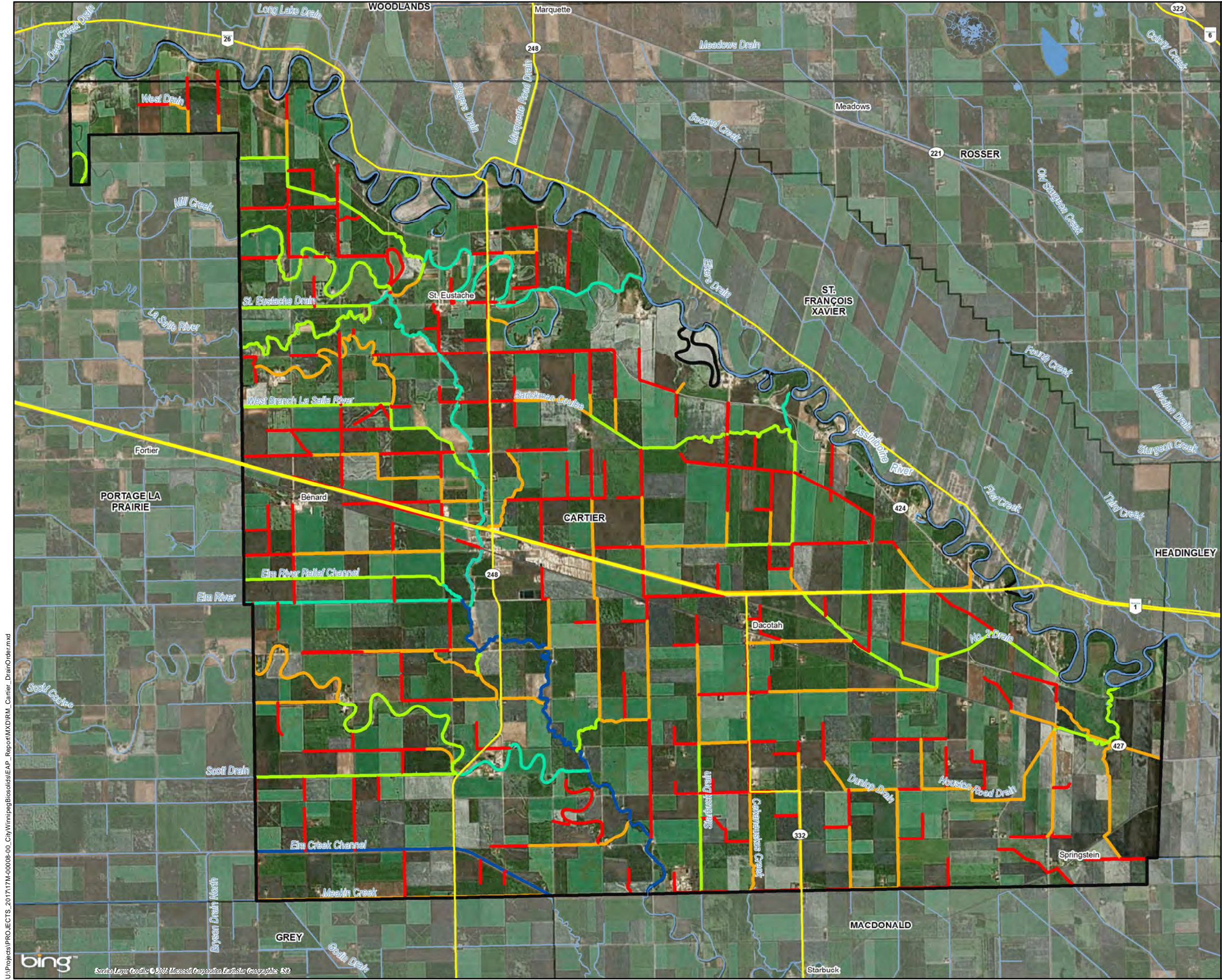
- Legend**
- ★ North End Sewage Treatment Plant (NEWPCC)
  - Agricultural Capability**
  - Class 1
  - Class 2
  - Class 3
  - Class 4
  - Classes not included
  - Rural Municipality of Rosser
  - Waterbody
  - RTAC Highway Network
  - Provincial Trunk Highway
  - Provincial Road
  - Railway Line

Coordinate System: NAD 83, UTM Zone 14 N  
 Data Source: MLI, MMM, NRCan, Bing  
 Date Created: May 03, 2017  
 Revision Date: January 10, 2018

**MAP 4**  
 CLI Agricultural Capability  
 (Class 1 to 4) within RM of Rosser



CLASSES	DESCRIPTION
Class 1	Soils in this class have no significant limitations in use for crops.
Class 2	Soils in this class have moderate limitations that restrict the range of crops or require moderate conservation practices.
Class 3	Soils in this class have moderately severe limitations that restrict the range of crops or require special conservation practices.
Class 4	Soils in this class have severe limitations that restrict the range of crops or require special conservation practices.



**CITY OF WINNIPEG  
BIOSOLIDS LAND APPLICATION  
17M-00008**

- Legend**
- ★ North End Sewage Treatment Plant (NEWPCC)
  - Drain Order Number**
  - 1 (Red line)
  - 2 (Orange line)
  - 3 (Yellow line)
  - 4 (Light Green line)
  - 5 (Dark Green line)
  - 6 (Blue line)
  - ▭ Rural Municipality of Cartier
  - Waterbody
  - RTAC Highway Network
  - Provincial Trunk Highway
  - Provincial Road
  - Railway Line

Coordinate System: NAD 83, UTM Zone 14 N  
 Data Source: MLI, MMM, NRCan, Bing  
 Date Created: May 03, 2017  
 Revision Date: January 10, 2018

**MAP 5**  
**Waterways and Drainage Orders**  
 within RM of Cartier



U:\Projects\PROJECTS\_2017\17M-00008-00\_City\Winnipeg\Biosolids\EAP\_Report\MXD\IRM\_Cartier\_DrainOrder.mxd  
 bing  
 Source: Esri, DeLorme, GeoEye, © 2010 Microsoft Corporation, Earthstar, GeoGraphics, © 2010