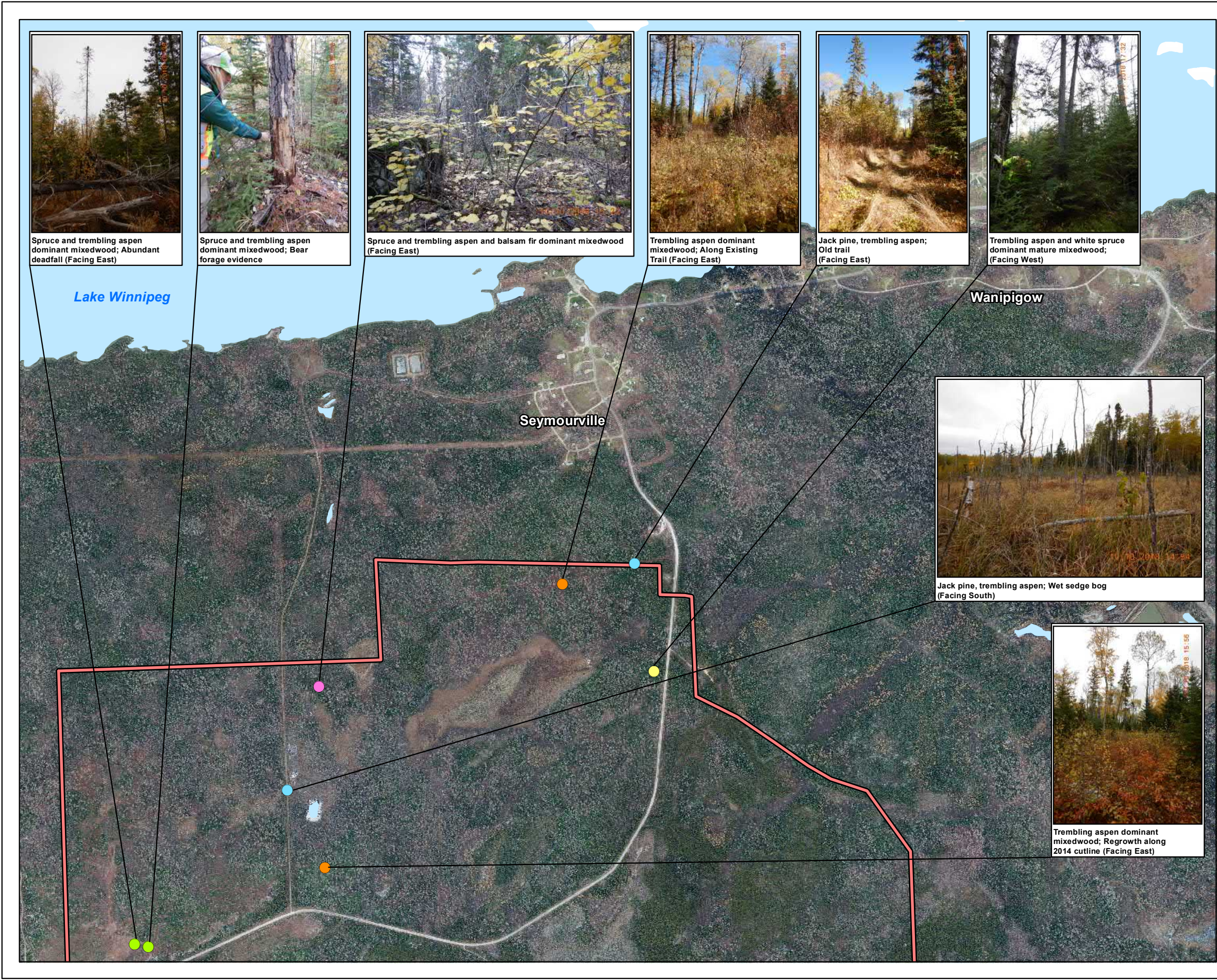


Appendix C

Terrestrial Reconnaissance Maps with Photographs



Key Map

Legend

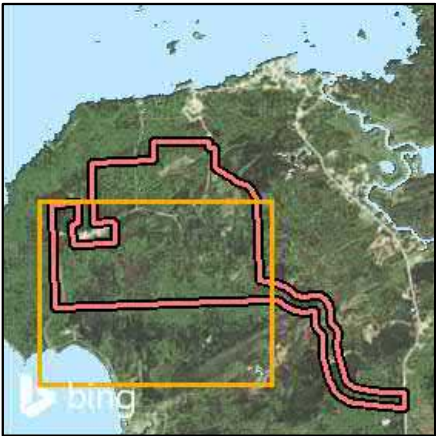
Project Site Area Boundary

Dominant Cover

- Trembling Aspen Dominant Mixedwood
- Trembling Aspen and White Spruce Dominant Mature Mixedwood
- Trembling Aspen and Balsam Fir Dominant Mixedwood
- Spruce and Trembling Aspen Dominant Mixedwood
- Jack Pine, Trembling Aspen

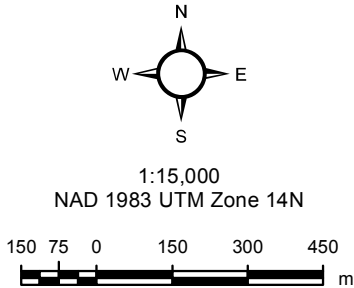
1:15,000
NAD 1983 UTM Zone 14N

This drawing has been prepared for the use of AECOM's client and may not be used, reproduced or relied upon by third parties, except as agreed by AECOM and its client, as required by law or for use by governmental reviewing agencies. AECOM accepts no responsibility, and denies any liability whatsoever, to any party that modifies this drawing without AECOM's express written

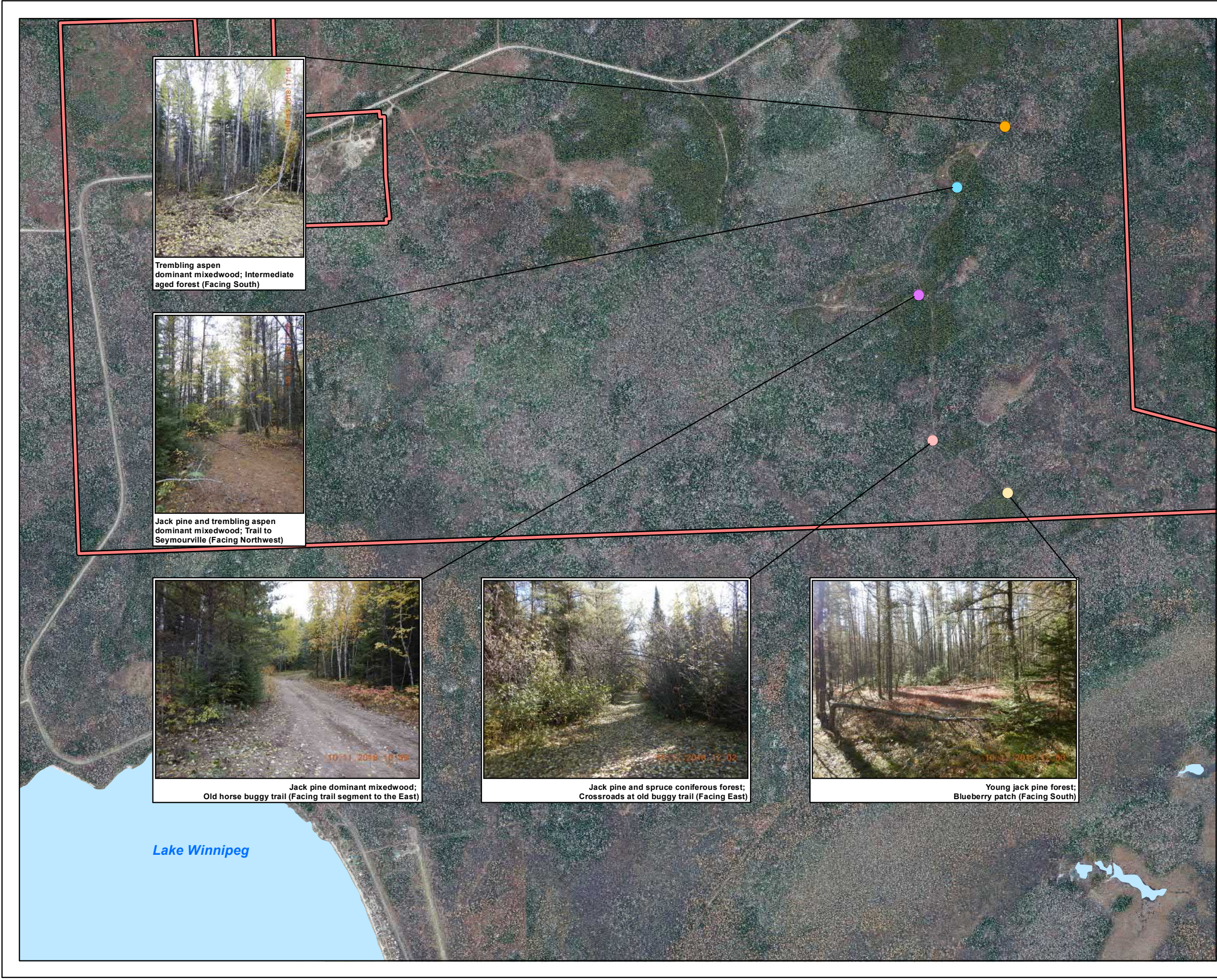


Key Map

- Legend**
- Project Site Area
- Dominant Cover**
- Intermediate Jack Pine Forest
 - Jack Pine Dominant Mixedwood
 - Trembling Aspen Dominant Over-mature Mixedwood Forest
 - White Spruce Forest



This drawing has been prepared for the use of AECOM's client and may not be used, reproduced or relied upon by third parties, except as agreed by AECOM and its client, as required by law or for use by governmental reviewing agencies. AECOM accepts no responsibility, and denies any liability whatsoever, to any party that modifies this drawing without AECOM's express written



Trembling aspen dominant mixedwood; Intermediate aged forest (Facing South)



Jack pine and trembling aspen dominant mixedwood; Trail to Seymourville (Facing Northwest)



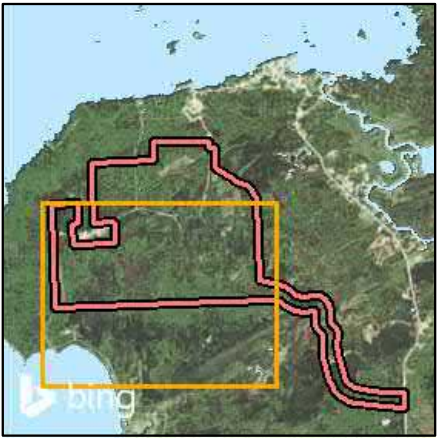
Jack pine dominant mixedwood; Old horse buggy trail (Facing trail segment to the East)



Jack pine and spruce coniferous forest; Crossroads at old buggy trail (Facing East)



Young jack pine forest; Blueberry patch (Facing South)



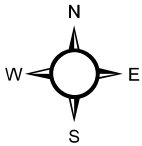
Key Map

Legend

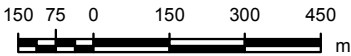
Project Site Area Boundary

Dominant Cover

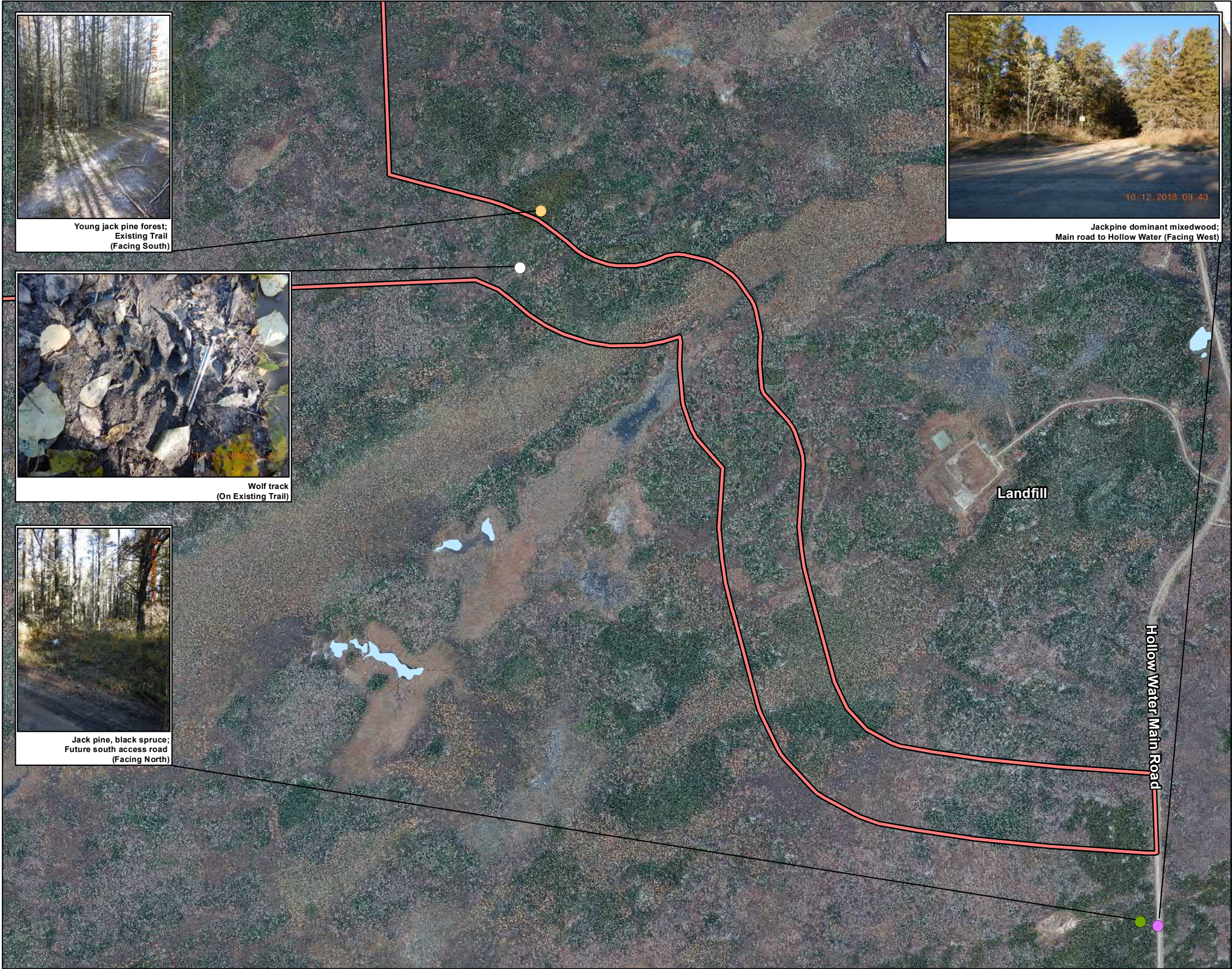
- Jack Pine Dominant Mixedwood
- Jack Pine and Spruce Coniferous Forest
- Jack Pine and Trembling Aspen Dominant Mixedwood
- Trembling Aspen Dominant Mixedwood
- Young Jack Pine Forest



1:15,000
NAD 1983 UTM Zone 14N



This drawing has been prepared for the use of AECOM's client and may not be used, reproduced or relied upon by third parties, except as agreed by AECOM and its client, as required by law or for use by governmental reviewing agencies. AECOM accepts no responsibility, and denies any liability whatsoever, to any party that modifies this drawing without AECOM's express written



Appendix D

Species of Conservation Concern in the
Lac Seul Upland Ecoregion

Appendix D: Species of Conservation Concern in the Lac Seul Upland Ecoregion

Category	Scientific Name	Common Name	Rank
Amphibian	<i>Ambystoma laterale</i>	Blue-spotted Salamander	S3S4
Amphibian	<i>Lithobates clamitans</i>	Green Frog	S1S2
Amphibian	<i>Lithobates pipiens</i>	Northern Leopard Frog	S4
Amphibian	<i>Lithobates septentrionalis</i>	Mink Frog	S3
Animal Assemblage	-	Gull Colony	SNR
Animal Assemblage	-	Snake Hibernaculum	SNR
Animal Assemblage	-	Tern Colony	SNR
Bird	<i>Antrostomus vociferus</i>	Whip-poor-will	S3B
Bird	<i>Ardea herodias</i>	Great Blue Heron	S5B
Bird	<i>Asio flammeus</i>	Short-eared Owl	S2S3B
Bird	<i>Cardellina canadensis</i>	Canada Warbler	S3B
Bird	<i>Chordeiles minor</i>	Common Nighthawk	S3B
Bird	<i>Contopus cooperi</i>	Olive-sided Flycatcher	S3B
Bird	<i>Contopus virens</i>	Eastern Wood-pewee	S4B
Bird	<i>Coturnicops noveboracensis</i>	Yellow Rail	S3B
Bird	<i>Cygnus buccinator</i>	Trumpeter Swan	S1B
Bird	<i>Euphagus carolinus</i>	Rusty Blackbird	S4B
Bird	<i>Falco peregrinus anatum</i>	Peregrine Falcon	S1B
Bird	<i>Hirundo rustica</i>	Barn Swallow	S4B
Bird	<i>Larus argentatus</i>	Herring Gull	S4B
Bird	<i>Melanerpes erythrocephalus</i>	Red-headed Woodpecker	S3B
Bird	<i>Pelecanus erythrorhynchos</i>	American White Pelican	S4B
Bird	<i>Phalacrocorax auritus</i>	Double-crested Cormorant	S5B
Bird	<i>Riparia riparia</i>	Bank Swallow	S5B
Bird	<i>Setophaga americana</i>	Northern Parula	S4B
Bird	<i>Strix varia</i>	Barred Owl	S4
Bird	<i>Vermivora chrysoptera</i>	Golden-winged Warbler	S3B
Fish	<i>Coregonus zenithicus</i>	Shortjaw Cisco	S2
Fish	<i>Ichthyomyzon castaneus</i>	Chestnut Lamprey	SU
Fish	<i>Ichthyomyzon unicuspis</i>	Silver Lamprey	SU
Fish	<i>Notropis percobromus</i>	Carmine Shiner	S2
Invertebrate	<i>Amblema plicata</i>	Threeridge	S3
Invertebrate	<i>Fusconaia flava</i>	Wabash Pigtoe	S3
Invertebrate	<i>Lasmigona complanata</i>	White Heelsplitter	S3
Mammal	<i>Condylura cristata</i>	Star-nosed Mole	S3
Mammal	<i>Rangifer tarandus caribou</i>	Woodland Caribou	S2S3
Plant	<i>Agalinis tenuifolia</i>	Narrow-leaved Agalinis	S2S3
Plant	<i>Antennaria plantaginifolia</i>	Plantain-leaved Everlasting	S1S2
Plant	<i>Arethusa bulbosa</i>	Dragon's-mouth	S2

Category	Scientific Name	Common Name	Rank
Plant	<i>Asarum canadense</i>	Wild Ginger	S3S4
Plant	<i>Bidens beckii</i>	Water-marigold	S3
Plant	<i>Botrychium simplex</i>	Least Grapefern	S1
Plant	<i>Canadanthus modestus</i>	Large Northern Aster	S2
Plant	<i>Carex castanea</i>	Chestnut Sedge	S2S3
Plant	<i>Carex emoryi</i>	Emory's Sedge	S2?
Plant	<i>Carex gracillima</i>	Slender Sedge	S2S3
Plant	<i>Carex livida</i>	Livid Sedge	S3
Plant	<i>Carex merritt-fernaldii</i>	Merritt Fernald's Sedge	S1
Plant	<i>Carex pedunculata</i>	Stalked Sedge	S3
Plant	<i>Carex projecta</i>	Necklace Sedge	S3?
Plant	<i>Carex vesicaria</i>	B blister Sedge	S1
Plant	<i>Carex vulpinoidea</i>	Fox Sedge	S3
Plant	<i>Carex xerantica</i>	White-scaled Sedge	S2
Plant	<i>Collinsia parviflora</i>	Blue-eyed Mary	S1
Plant	<i>Cypripedium arietinum</i>	Ram's Head Lady's-slipper	S2S3
Plant	<i>Dichanthelium linearifolium</i>	White-haired Panic-grass	S2?
Plant	<i>Diphasiastrum tristachyum</i>	Ground-cedar	S3
Plant	<i>Dryopteris fragrans</i>	Fragrant Shield Fern	S3S4
Plant	<i>Dulichium arundinaceum</i>	Three-way Sedge	S2
Plant	<i>Eriocaulon aquaticum</i>	White-buttons	S1
Plant	<i>Gentiana rubricaulis</i>	Closed Gentian	S3
Plant	<i>Glyceria canadensis</i>	Canada Manna Grass	S1
Plant	<i>Glyceria pulchella</i>	Graceful Manna Grass	S2S3
Plant	<i>Goodyera tessellata</i>	Tesselated Rattlesnake Plantain	S2
Plant	<i>Gymnocarpium continentale</i>	Nahanni Oak Fern	S3S4
Plant	<i>Heteranthera dubia</i>	Water Star-grass	S2S3
Plant	<i>Hudsonia tomentosa</i>	False Heather	S3
Plant	<i>Huperzia lucidula</i>	Shining Club-moss	SH
Plant	<i>Huperzia selago</i>	Mountain Club-moss	S2S3
Plant	<i>Juncus interior</i>	Inland Rush	S1
Plant	<i>Juncus vaseyi</i>	Big-head Rush	S4
Plant	<i>Leersia oryzoides</i>	Rice Cutgrass	S3
Plant	<i>Leucophysalis grandiflora</i>	Large White-flowered Ground-cherry	S3S4
Plant	<i>Lobelia dortmanna</i>	Water Lobelia	S1
Plant	<i>Lycopodiella inundata</i>	Bog Club-moss	S1
Plant	<i>Lycopodium clavatum</i>	Running-pine	S3S4
Plant	<i>Myriophyllum alterniflorum</i>	Water-milfoil	S1S3
Plant	<i>Myriophyllum farwellii</i>	Farwell's Water-milfoil	S1
Plant	<i>Nymphaea odorata ssp. odorata</i>	Fragrant Water-lily	S2

Category	Scientific Name	Common Name	Rank
Plant	<i>Onoclea sensibilis</i>	Sensitive Fern	S3?
Plant	<i>Osmunda claytoniana</i>	Interrupted Fern	S2S3
Plant	<i>Platanthera hookeri</i>	Hooker's Orchid	S2S3
Plant	<i>Platanthera orbiculata</i>	Round-leaved Bog Orchid	S3S4
Plant	<i>Potamogeton amplifolius</i>	Large-leaved Pondweed	S3
Plant	<i>Pyrola americana</i>	Round-leaved Pyrola	S2?
Plant	<i>Rhynchospora alba</i>	White Beakrush	S3
Plant	<i>Sagittaria rigida</i>	Sessile-fruited Arrowhead	S2?
Plant	<i>Schoenoplectus subterminalis</i>	Water Bulrush	SU
Plant	<i>Taxus canadensis</i>	Canada Yew	S3
Plant	<i>Torreyochloa pallida</i> var. <i>fernaldii</i>	Pale Manna Grass	S2
Plant	<i>Vaccinium caespitosum</i>	Dwarf Bilberry	S3
Plant	<i>Viola selkirkii</i>	Long-spurred Violet	S2
Reptile	<i>Chelydra serpentina</i>	Snapping Turtle	S3

Updated December 1, 2016.

Source: Manitoba Conservation Data Centre. 2017. Manitoba Conservation Data Centre Species of Conservation Concern. Manitoba Sustainable Development. Accessed from <https://www.gov.mb.ca/sd/cdc/ecoreg/lacseul.html>.

Conservation Data Centre Ranks (Global and Provincial)

Species are evaluated and ranked by the Conservation Data Centre on the basis of their range-wide (global - G) status, and their province-wide (subnational - S) status according to a standardized procedure used by all Conservation Data Centres and Natural Heritage Programs. These ranks are used to determine protection and data collection priorities, and are revised as new information becomes available.

For each level of distribution—global and provincial—species are assigned a numeric rank ranging from 1 (very rare) to 5 (demonstrably secure). This reflects the species' relative endangerment and is based primarily on the number of occurrences of that species globally or within the province. However, other information, such as date of collection, degree of habitat threat, geographic distribution patterns and population size and trends, is considered when assigning a rank. The number of occurrences listed below are suggestions, not absolute criteria.

For example, the Green Frog (*Rana clamitans*) is ranked G5, S2. That is, globally the species is abundant and secure, while in Manitoba it is rare and may be vulnerable to extirpation.

Rank	Definition
1	Very rare throughout its range or in the province (5 or fewer occurrences, or very few remaining individuals). May be especially vulnerable to extirpation.
2	Rare throughout its range or in the province (6 to 20 occurrences). May be vulnerable to extirpation.
3	Uncommon throughout its range or in the province (21 to 100 occurrences).
4	Widespread, abundant, and apparently secure throughout its range or in the province, with many occurrences, but the element is of long-term concern (> 100 occurrences).
5	Demonstrably widespread, abundant, and secure throughout its range or in the province, and essentially impossible to eradicate under present conditions.
U	Possibly in peril, but status uncertain; more information needed.
H	Historically known; may be rediscovered.
X	Believed to be extinct; historical records only, continue search.
SNR	A species not ranked. A rank has not yet assigned or the species has not been evaluated.
SNA	A conservation status rank is not applicable to the element.

Other Heritage Codes

Code	Definition
G#G#	Numeric range rank: A range between two of the numeric ranks. Denotes range of uncertainty about the exact rarity of the species.
S#S#	

Subrank

Code	Definition
T	Rank for subspecific taxon (subspecies, variety, or population); appended to the global rank for the full species, e.g. G4T3.

Qualifiers

Code	Definition
B	Breeding status of a migratory species. Example: S1B,SZN - breeding occurrences for the species are ranked S1 (critically imperilled) in the province, nonbreeding occurrences are not ranked in the province.
N	Non-breeding status of a migratory species. Example: S1B,SZN - breeding occurrences for the species are ranked S1 (critically imperilled) in the province, nonbreeding occurrences are not ranked in the province.
Q	Taxonomic questions or problems involved, more information needed; appended to the global rank.
T	Rank for subspecific taxon (subspecies, variety, or population); appended to the global rank for the full species.
#	A modifier to SX or SH; the species has been reintroduced but the population is not yet established.
?	Inexact or uncertain; for numeric ranks, denotes inexactness.

Source: Manitoba Sustainable Development. 2017. Manitoba Conservation Data Centre - Species of Conservation Concern. Accessed from <https://www.gov.mb.ca/sd/cdc/consranks.html>.