



Environment and Climate
Environmental Approvals Branch
1007 Century Street, Winnipeg MB R3H 0W4
T 204-945-8321 F 204-045-5229
EABDirector@gov.mb.ca

Registry File Number: 6000.00
File No.: 21356

February 15, 2023

Ron Hahlweg
Environment/Utilities Manager
Rural Municipality of St. Andrews
Box 130, 500 Railway Avenue
Clandeboye MB R0C 0P0
ron@rmofstandrews.com

Dear Ron Hahlweg:

Re: RM of St. Andrews - Earl Grey Waste Disposal Ground- Permit No. 37417 P2

Thank you for your proposal. Please find enclosed Permit No. 37417 P2, issued to the Rural Municipality of St. Andrews to run the Earl Grey Waste Disposal Ground.

The Rural Municipality of St. Andrews must follow all permit requirements and federal, provincial, and municipal regulations and by-laws.

Anyone affected by this decision may appeal, in writing, to the Minister of Environment and Climate at minecp@leg.gov.mb.ca by March 17, 2023. The permit is available on the public registry at <https://www.gov.mb.ca/sd/eal/registries/6000wmfpermits/index.html>.

If you have any questions about this approval, please contact Tyler Kneeshaw, Regional Supervisor, Environmental Compliance and Enforcement Branch at EnvCEPortage@gov.mb.ca or 204-239-3608.

Sincerely,

Original Signed By

James Capotosto
Director

Enclosure

c. Tyler Kneeshaw

Waste Disposal Ground Operating Permit



File No. : 21356

Permit No.: 37417 P2

Issue Date: February 15, 2023

Following the Waste Management Facilities Regulation under The Environment Act, the Rural Municipality of St. Andrews is hereby permitted to run the Earl Grey Waste Disposal Ground (facility) on portions of SW 13-13-03 EPM within the Rural Municipality of St. Andrews, Province of Manitoba. Schedule A of this permit identifies the facility.

This permit is subject to being amended, suspended, or revoked under sections 7 and 9 of the Waste Management Facilities Regulation.

This permit is issued subject to the following terms and conditions:

General Terms and Operating Conditions

1. This permit expires on February 15, 2028.
2. The operator must maintain and operate the facility following the Waste Management Facilities Regulation and any future amendments thereof, and this permit.
3. The operator must obtain approval in writing from the director of the Environmental Approvals Branch before altering the facility.

Materials Acceptance and Handling

4. The operator must segregate materials collected for recycling or reuse, and must temporarily stockpile these materials in clearly signed designated areas. These areas must be maintained to control weeds, vectors, and the quality of the materials.
5. The operator must remove the materials identified in clause 4 of this permit regularly or upon the request of an environment officer, within the timeframe specified.

Hazardous Wastes

6. The operator must collect and dispose of any hazardous waste following The Dangerous Goods Handling and Transportation Act, and other federal, provincial, and municipal regulations.

Placement and Cover

7. The operator may use material other than soil to cover the active area upon receiving written approval from the director or environment officer.

Surface Water Management

8. The operator must construct the facility such that all uncontaminated surface water flows to the perimeter ditch and impacted water from all material storage areas is contained within the facility boundaries.

Site Construction and Upgrading

9. The operator must have all waste disposal cells, modifications or alterations designed by and construction overseen by an engineer.
10. The operator must, before beginning any construction at the facility, submit an electronic copy of final engineering design plans, sealed by an engineer, to the director. The plans will show the engineering details of each new or altered component and the location of each new or altered component with respect to other components.
11. The operator must construct the facility following the design plans submitted to the director following clause 10 of this permit and subject to any terms and conditions set by the director.
12. Notwithstanding clause 11 of this permit, construction is subject to the following conditions:
 - a) the operator must provide for testing of all clay liners and cut-off walls by a qualified consultant to confirm that compaction is 95% Standard Proctor Density on maximum lifts of 0.15 m (150 mm); and
 - b) all active areas or leachate containment developed from or with clay must be constructed to achieve a hydraulic conductivity of not more than 1×10^{-7} cm/s with a minimum thickness of one metre perpendicular to the surface. If appropriate or sufficient clay is not available an alternative proposal must be submitted to the director for written approval before construction.
13. The operator must, unless otherwise approved by the designated environment officer, arrange with the designated environment officer a mutually acceptable time and date for any required soil sampling between the 15th day of May and the 15th day of October of any year.
14. The operator must take and test undisturbed soil samples from the following:
 - a) the clay of new waste disposal cell(s);
 - b) leachate ponds; and
 - c) any clay component of the facility requiring testing by the designated environment officer.
15. The number and location of samples and test methods will be specified by the designated environment officer up to a maximum of 20 samples per cell or clay component of the facility.
16. The operator must, before using any area tested following clause 14 of this permit, receive the approval of the designated environment officer for the results of the tests carried out following clause 14 of this permit.
17. The operator must:
 - a) prepare record drawings of the facility and must label the drawings "record drawings"; and
 - b) submit "record drawings" along with a construction report to the designated environmental officer within 120 days of the completion of construction of the facility. The construction report must include the following:
 - (i) the engineer's inspection dates and notes;
 - (ii) density measurements (for clay lined facility); and
 - (iii) updated site plan showing the new cell, monitoring well installation logs, locations, and background water samples (if applicable).

Burning of Specified Waste

18. The operator must only burn:
- a) separated and readily combustible materials such as boughs, leaves, loose straw, paper products, cardboard, non-salvageable untreated wood, and packing materials derived from wood; and
 - b) only when there is an appropriate volume of materials as identified in clause 18 a).

Composting

19. The operator must allow composting of only yard, leaf, commercial, kitchen, household, and pet waste at the facility, unless otherwise approved by an environment officer.

Monitoring and Reporting Requirements

20. The operator must collect, store, and analyze groundwater monitoring well samples using approved field and laboratory techniques for dissolved analysis. The analytical results must be retained in a format acceptable to the director.
21. The operator must sample the groundwater monitoring wells for those parameters identified in Schedule B of this permit once per year, or at a frequency approved by the director.
22. The operator must submit an annual report, in a format acceptable to the director, detailing the sampling methodology, field observations and results of groundwater sampling analyses, complete with previous results and trends. The report must be submitted annually to an environment officer no later than December 31 of each year.

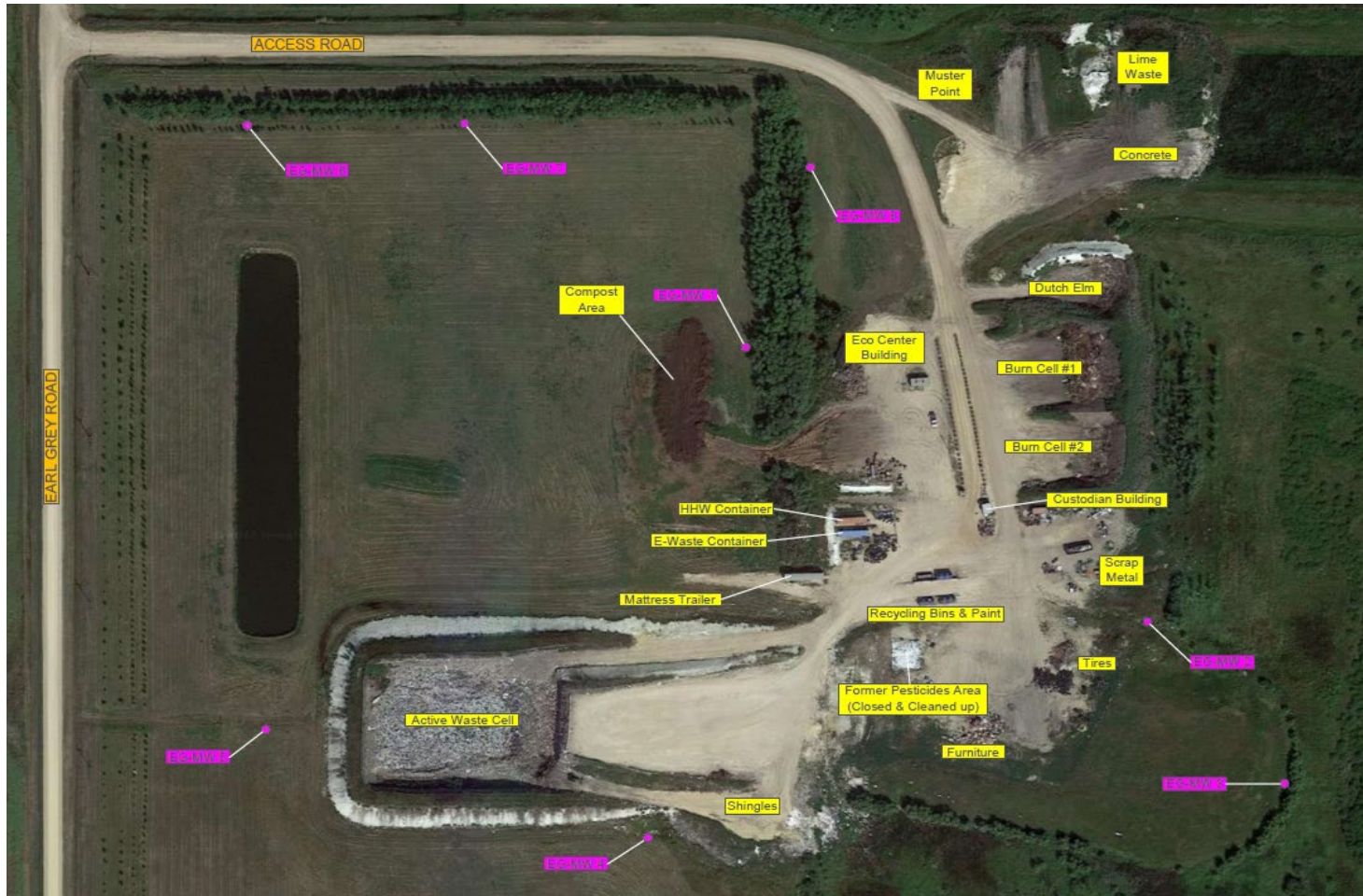
Revocation

23. This permit replaces Permit No. 37417 P1, which is hereby rescinded.

Original Signed By

James Capotosto
Director

Schedule A to Permit No. 37417 P2
Facility layout



Schedule B to Permit No. 37417 P2
Groundwater chemistry parameters following clause 21 of this permit

Chemical Parameters		
Inorganics		
Alkalinity – Total		Magnesium – Dissolved
Ammonia – Total		Manganese – Dissolved
Arsenic – Total		Mercury – Dissolved
Barium – Dissolved		Nitrate - Reported as N
Boron – Dissolved		Nitrite - Reported as N
Cadmium – Dissolved		Total Kjeldahl Nitrogen – Reported as N
Calcium – Dissolved		Total Phosphorous
Calcium Carbonate		Potassium – Dissolved
Chloride		Silicon – Dissolved
Chromium – Dissolved		Sodium – Dissolved
Conductivity		Total Dissolved Solids (TDS)
Copper – Dissolved		Sulphate
Iron – Dissolved		Uranium – Dissolved
Lead – Dissolved		Zinc – Dissolved
Volatile Organic Compounds (VOC's)		
BTEX		
Other Organics		
Biological Oxygen Demand (BOD)		Chemical Oxygen Demand (COD)
Dissolved Organic Carbon (DOC)		
Field Parameters		
pH		Groundwater Elevation
Conductivity		Dissolved Oxygen
Temperature		

Note: The director may revise this schedule. All dissolved samples should be filtered in the field and preserved in the field at time of sampling. The operator must notify the director and the laboratory for dissolved samples not filtered and preserved in the field.