



**Environment and Climate**

Environmental Approvals Branch  
Box 35, 14 Fultz Boulevard  
Winnipeg MB R3Y 0L6  
T 204 945-8321 F 204 945-5229  
[EABDirector@gov.mb.ca](mailto:EABDirector@gov.mb.ca)

Public Registry File Number: 6000.00  
File Number: 51571

September 25, 2023

Mark Sinclair  
Park District Manager  
Grand Beach Provincial Park  
Box 220  
Grand Marais MB R0E 0T0  
[Mark.Sinclair@gov.mb.ca](mailto:Mark.Sinclair@gov.mb.ca)

Dear Mark Sinclair:

**Re: Grand Beach Provincial Park Permit No. 46581 P1**

Please find enclosed Permit No. 46581 P1 in response to your proposal dated October 14, 2022. You wish to continue operating the Grand Beach Provincial Park Waste Transfer Station on portions of W½ 21-18-7 EPM within Grand Beach Provincial Park.

Parks Branch of Natural Resources and Northern Development must follow all permit requirements and federal, provincial, and municipal regulations and by-laws.

Anyone affected by this decision may appeal, in writing, to the Minister of Environment and Climate at [minec@leg.gov.mb.ca](mailto:minec@leg.gov.mb.ca) by October 25, 2023. The permit is available on the public registry at <https://www.gov.mb.ca/sd/eal/registries/6000wmfpermits/index.html>.

If you have any questions about this approval, please contact Kim Kmet, Acting Regional Supervisor, Environmental Compliance and Enforcement Branch, at [EnvCEInterlake@gov.mb.ca](mailto:EnvCEInterlake@gov.mb.ca) or 204-641-4091.

Sincerely,

Original Signed By  
Agnes Wittmann  
Director  
The Environment Act

Enclosure

c. Kim Kmet

# Transfer Station Operating Permit



**File No. : 51571**

**Permit No.: 46581 P1**

**Issue Date: September 25, 2023**

Following the Waste Management Facilities Regulation under The Environment Act, Parks Branch of Natural Resources and Northern Development is hereby permitted to run the Grand Beach Provincial Park Waste Transfer Station (facility) on portions of W½ 21-18-7 EPM within Grand Beach Provincial Park, Manitoba. Schedule A of this permit identifies the facility.

This permit is subject to being amended, suspended, or revoked under Sections 7 and 9 of the Waste Management Facilities Regulation.

## **General Terms and Operating Conditions**

1. This permit expires on September 25, 2028.
2. The operator must maintain and operate the facility following the Waste Management Facilities Regulation and any future amendments and this permit.
3. The operator must obtain approval in writing from the director before altering the facility.

## **Materials Acceptance and Handling**

4. The operator must segregate materials collected for recycling or reuse, and must temporarily stockpile these materials in clearly signed designated areas. The operator must maintain these areas to control weeds, vectors, and the quality of the materials.
5. The operator must remove all materials received at the facility regularly or upon the request of an environment officer, within the timeframe specified.
6. The operator must implement control measures to prevent the attraction and sustenance of rodents and scavenging vectors.
7. The operator must not accept any livestock or other animal mortalities at the facility.

## **Hazardous Wastes**

8. The operator must collect and dispose of any hazardous waste following The Dangerous Goods Handling and Transportation Act, and other federal, provincial, and municipal regulations.

### **Surface Water Management**

9. The operator must construct the facility such that all uncontaminated surface water flows to the perimeter ditch and impacted water from all material storage areas is contained within the facility boundaries.

### **Burning of Specified Waste**

10. The operator must only burn:
  - a) separated and readily combustible materials such as boughs, leaves, loose straw, paper products, cardboard, non-salvageable untreated wood, and packing materials derived from wood; and
  - b) only when there is an appropriate volume of materials as identified in clause 10 (a) of this permit.

### **Composting**

11. The operator must not allow composting at the facility.

### **Monitoring and Reporting Requirements**

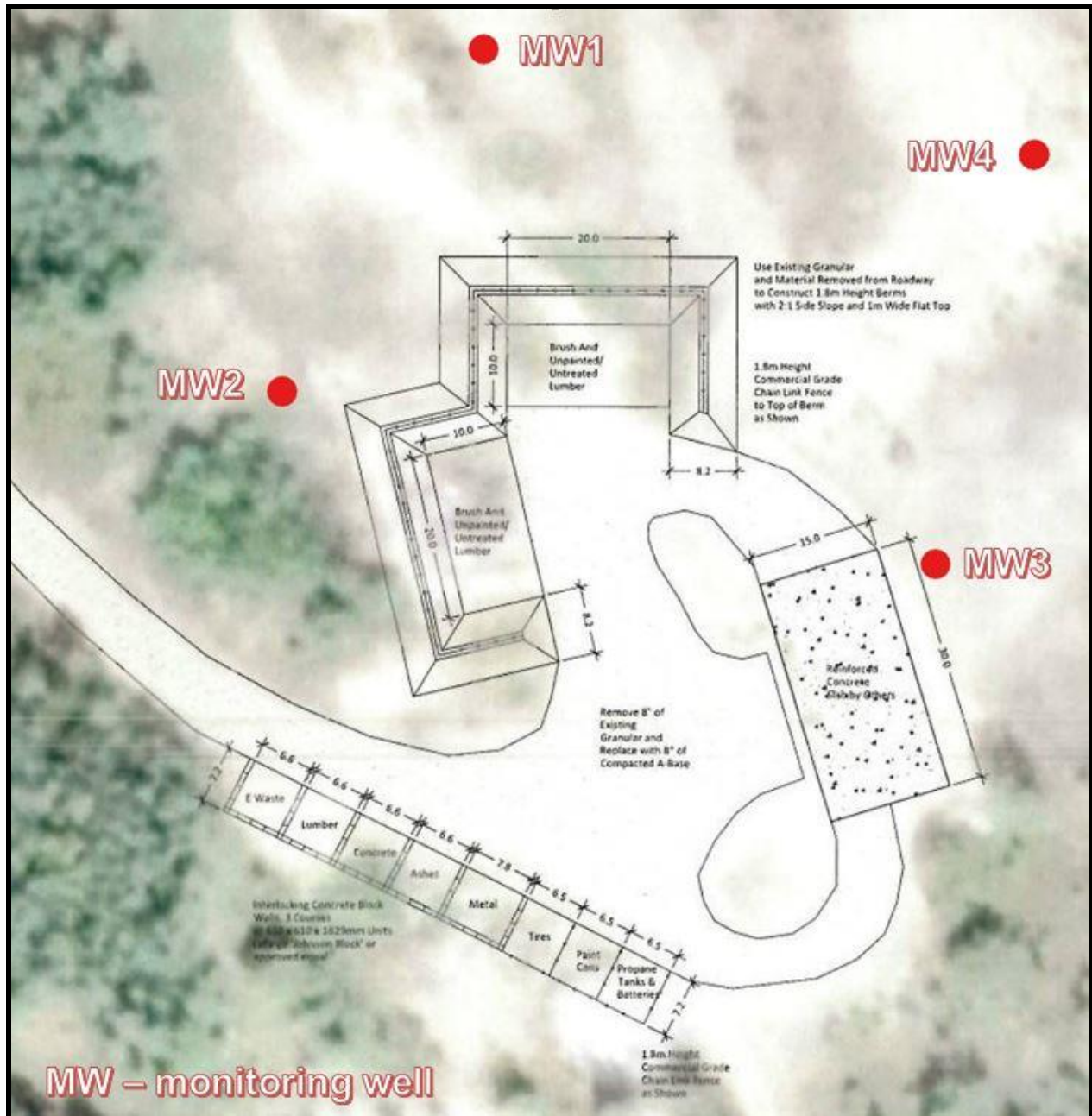
12. The operator must collect, store, and analyze groundwater monitoring well samples using approved field and laboratory techniques for analysis. The operator must retain the analytical results in a format acceptable to the environment officer.
13. The operator must sample the groundwater monitoring wells for those parameters identified in Schedule B of this permit once per year, or at a frequency approved by the environment officer.
14. The operator must submit an annual report, in a format acceptable to the environment officer, detailing the sampling methodology, field observations, and results of groundwater sampling analyses, complete with previous results and trends. The operator must submit the report annually to an environment officer no later than December 31 of each year.

### **Revocation**

15. This permit replaces Permit No. 46581, which is expired.

Original Signed By  
Agnes Wittmann  
Director  
The Environment Act

Schedule A to Permit No. 46581 P1  
Facility layout



**Schedule B to Permit No. 46581 P1**  
**Groundwater chemistry parameters**  
**following clause 13 of this permit**

<b>Chemical Parameters</b>	
<b>Inorganics</b>	
Alkalinity – Total	Magnesium – Dissolved
Ammonia – Total	Manganese – Dissolved
Arsenic – Dissolved	Mercury – Dissolved
Barium – Dissolved	Nitrate - Reported as N
Boron – Dissolved	Nitrite - Reported as N
Cadmium – Dissolved	Total Kjeldahl Nitrogen - Reported as N
Calcium – Dissolved	Total Phosphorous
Calcium Carbonate	Potassium – Dissolved
Chloride	Silicon – Dissolved
Chromium – Dissolved	Sodium – Dissolved
Conductivity	Total Dissolved Solids (TDS)
Copper – Dissolved	Sulphate
Iron – Dissolved	Uranium – Dissolved
Lead – Dissolved	Zinc – Dissolved
<b>Volatile Organic Compounds (VOCs)</b>	
BTEX	
<b>Other Organics</b>	
Biological Oxygen Demand (BOD)	Chemical Oxygen Demand (COD)
Dissolved Organic Carbon (DOC)	
<b>Field Parameters</b>	
pH	Groundwater Elevation
Conductivity	Dissolved Oxygen
Temperature	

Note: The director may revise this schedule. All dissolved samples should be filtered in the field and preserved in the field at the time of sampling. The operator must notify the director and the laboratory for dissolved samples not filtered and preserved in the field.