



**Environment, Climate and Parks**

Environmental Approvals Branch  
1007 Century Street, Winnipeg MB R3H 0W4  
T 204-945-8321 F 204-045-5229  
[www.manitoba.ca](http://www.manitoba.ca)

Registry File Number: 6000.00  
File No.: 16661

August 29, 2022

Cindy Marzoff, Chief Administrative Officer  
Hamiota Municipality  
75 Maple Avenue East, Box 100, Hamiota MB R0M 0T0  
[cao@hamiota.com](mailto:cao@hamiota.com)

Dear Cindy Marzoff:

**Re: Hamiota Waste Disposal Ground Permit No. 47336 P1**

Thank you for your proposal. Enclosed Permit No. 47336 P1 (permit) is issued to Hamiota Municipality for the operation of the Hamiota Waste Disposal Ground.

Hamiota Municipality must operate the facility according to all permit requirements and applicable federal, provincial, and municipal regulations and by-laws.

Anyone affected by the issuance of this permit may appeal the decision to the Minister of Environment, Climate and Parks. Appeals may be submitted in writing to the Minister at [minecp@leg.gov.mb.ca](mailto:minecp@leg.gov.mb.ca) by September 28, 2022.

If you have any questions regarding this approval, please contact Kristy Forrestall, Regional Supervisor, Environmental Compliance and Enforcement Branch at [EnvCEWestern@gov.mb.ca](mailto:EnvCEWestern@gov.mb.ca) or 204-573-0518.

Sincerely,

Original Signed by

Siobhan Burland Ross for  
James Capotosto  
Director

Enclosure

- c. Kristal Harman, Yvonne Hawryliuk, Kristy Forrestall - Environmental Compliance and Enforcement
- Asit Dey, Edwin Yazon - Environmental Approvals
- Public Registry

# Waste Disposal Ground Operating Permit

File No. : 16661

Permit No. 47336 P1  
Issue Date: August 29, 2022

Following the Waste Management Facilities Regulation under The Environment Act, the Hamiota Municipality is hereby permitted to operate the Hamiota Waste Disposal Ground (facility) on portions of NW 33-13-23 WPM within the Hamiota Municipality, Province of Manitoba.

This permit is subject to being amended, suspended, or revoked under sections 7 and 9 of the Waste Management Facilities Regulation.

This permit is issued subject to the following terms and conditions:

## **General Terms and Operating Conditions**

1. This permit expires on August 31, 2027.
2. This operator is allowed to locate the facility not less than 300 metres from a water body.
3. The operator shall maintain and operate the facility following the Waste Management Facilities Regulation and any future amendments thereof, and this permit. Schedule A of this permit identifies the facility.
4. The operator shall, unless otherwise approved in writing by an environment officer, maintain an operations manual at the facility following the Waste Management Facilities Regulation and any future amendments thereof. The manual must detail the facility's operation and maintenance, including but not limited to a detailed list of the following: waste and recyclable materials accepted, emergency and safety procedures, materials not accepted, materials diverted, measures to control the presence of animals and insects, odour monitoring and abatement plans, noise management plan, active cell development, maintenance, cover, and closure activities. The operator shall provide the manual to an environment officer upon request.
5. The operator shall, unless otherwise approved in writing by an environment officer, maintain a copy of this permit at the facility.
6. The operator shall obtain approval in writing from the director of the Environmental Approvals Branch before altering the facility.

## **Site Access and Control**

7. The operator shall restrict access to the facility when site supervision is not provided, with a locked gate, barrier, or other system approved in writing by an environment officer.

## **Materials Acceptance and Handling**

8. The operator shall segregate materials collected for recycling or reuse, and shall temporarily stockpile these materials in clearly signed designated areas. These areas must be maintained to control weeds, vectors, and the quality of the materials.
9. The operator shall remove the materials identified in clause 8 of this permit regularly or upon the request of an environment officer, within the timeframe specified.

10. The operator shall remove any litter accumulated along the access road and around the perimeter of the site at minimum twice annually or as required by an environment officer.
11. The operator shall receive written approval from an environment officer for animal mortalities disposed of at the facility.
12. The operator shall immediately cover any animal mortality approved in clause 11 of this permit with a minimum of one metre of cover material to prevent scavenging.

### **Hazardous Wastes**

13. The operator shall collect and dispose of any hazardous waste following The Dangerous Goods Handling and Transportation Act, and other federal, provincial, and municipal regulations.

### **Placement and Cover**

14. The operator may use material other than soil for the cover of the active area upon receiving written approval from the director or environment officer.

### **Surface Water Management**

15. The operator shall develop and maintain a surface water drainage network to minimize water from entering active cells, recycling, and storage areas.
16. The operator shall construct the facility such that all uncontaminated surface water flows to the perimeter ditch and impacted water from all material storage areas is contained within the facility boundaries.

### **Site Construction and Upgrading**

17. The operator shall have all waste disposal cells, modifications, or alterations designed by and construction overseen by an engineer.
18. The operator shall, prior to initiating any construction at the facility, submit one paper copy and one electronic copy of final engineering design plans, sealed by an engineer(s), to the director. The plans will show the engineering details of each new or altered component and the location of each new or altered component with respect to other components.
19. The operator shall construct the facility following the design plans submitted to the director following clause 18 of this permit and subject to any terms and conditions set by the director.
20. Notwithstanding clause 19 of this permit, construction shall be subject to the following conditions:
  - a) the operator must provide for testing of all clay liners and cut-off walls by a qualified consultant to confirm that compaction is 95% Standard Proctor Density on maximum lifts of 150 mm; and
  - b) all active areas or leachate containment developed from or with clay must be constructed to achieve a hydraulic conductivity of not more than  $1 \times 10^{-7}$  cm/s with a minimum thickness of one metre perpendicular to the surface. If appropriate or sufficient clay is not available an alternative proposal must be submitted to the director for written approval prior to construction.

21. The operator shall, unless otherwise approved by the designated environment officer, arrange with the environment officer a mutually acceptable time and date for any required soil sampling between the 15<sup>th</sup> day of May and the 15<sup>th</sup> day of October of any year.
22. The operator shall take and test undisturbed soil samples from the following:
  - a) the clay of new waste disposal cell(s);
  - b) leachate ponds; and
  - c) any clay component of the facility requiring testing by the director.
23. The number and location of samples and test methods will be specified by the designated environment officer up to a maximum of 20 samples per cell or clay component of the facility.
24. The operator shall, prior to operation of any area tested following clause 22 of this permit, receive the approval of the environment officer for the results of the tests carried out following clause 22 of this permit.
25. The operator shall:
  - a) prepare record drawings of the facility and shall label the drawings "record drawings"; and
  - b) submit "record drawings" along with a construction report to the director within 120 days of the completion of construction of the facility. The construction report shall include the following: the engineer's inspection dates and notes, density measurements (for clay lined facility), updated site plan showing the new cell and monitoring well installation logs, locations, and background water samples (if applicable).

#### **Burning of Specified Waste**

26. The operator shall only burn separated and readily combustible materials such as boughs, leaves, loose straw, paper products, cardboard, non-salvageable untreated wood, and packing materials derived from wood, and only when there is an appropriate volume of these materials.
27. The operator shall not burn, other than those materials specified in clause 26 of this permit, any other products or materials, including but not limited to plywood, composite board, or other materials constructed with glues, finishes or preservatives, plastics, composites, rubber, manures, chemically treated fabrics, mattresses, finished furniture, or synthetics.

#### **Composting**

28. The operator shall not allow composting at the facility.

#### **Monitoring and Reporting Requirements**

29. The operator shall install a minimum of three groundwater monitoring wells (one upstream and two downstream).
30. The operator shall collect, store, and analyze groundwater monitoring well samples using approved field and laboratory techniques for dissolved analysis. The analytical results shall be retained in a format acceptable to the director.

31. The operator shall sample the groundwater monitoring wells for those parameters identified in Schedule B of this permit prior to decommissioning of the expansion cells and once per year thereafter, or at a frequency approved by the director.
32. The operator shall submit an annual report, in a format acceptable to the director, detailing the sampling methodology, field observations, and results of groundwater sampling analyses, complete with previous results and trends. The report shall be submitted annually to an environment officer no later than December 31 of each year.

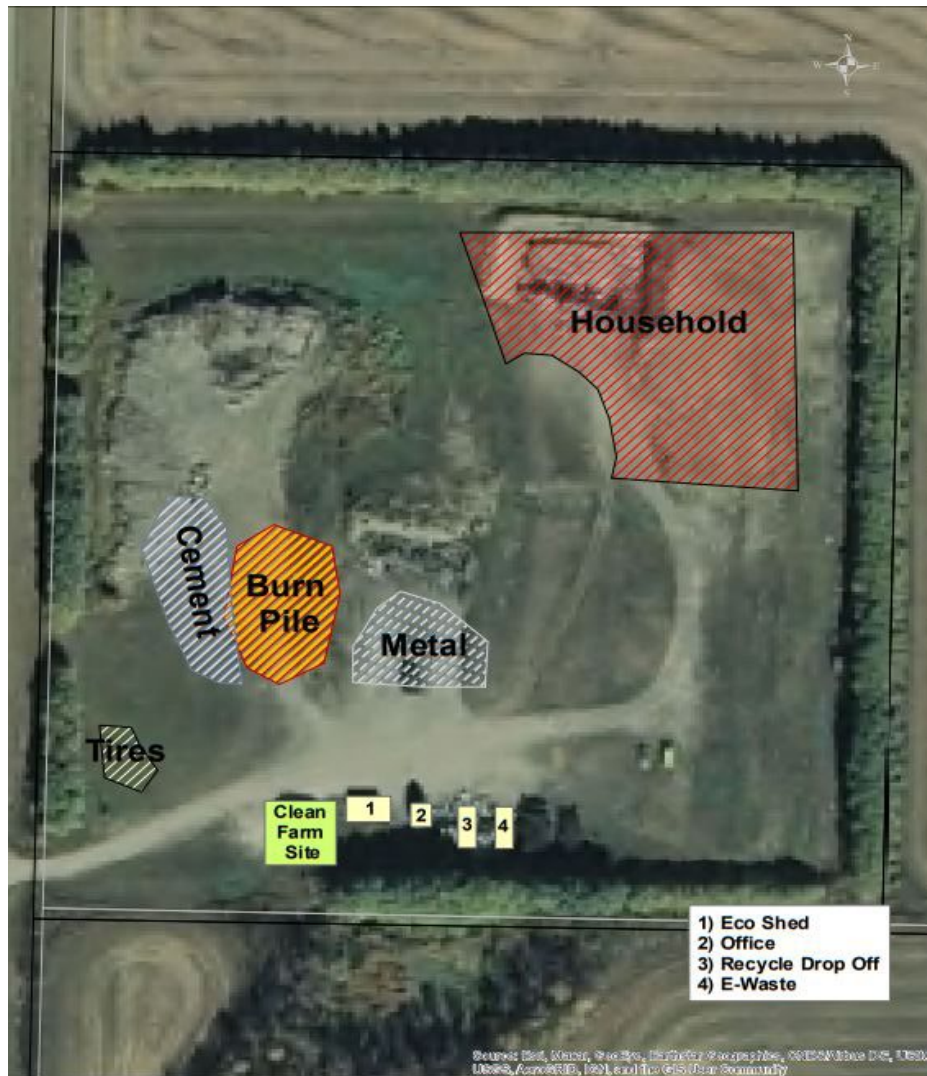
**Revocation**

33. This permit replaces Permit No. 47336.

Original Signed by

Siobhan Burland Ross for  
James Capotosto  
Director

**Schedule A to Permit No. 47336 P1**  
**Facility layout following clause 3 of this permit**



**Schedule B to Permit No. 47336 P1**  
**Groundwater chemistry parameters according to clause 31 of this permit**

<b>Chemical Parameters</b>	
<b>Inorganics</b>	
Alkalinity – Total	Magnesium – Dissolved
Ammonia – Total	Manganese – Dissolved
Arsenic – Total	Mercury – Dissolved
Barium – Dissolved	Nitrate - Reported as N
Boron – Dissolved	Nitrite - Reported as N
Cadmium – Dissolved	Total Kjeldahl Nitrogen – Reported as N
Calcium – Dissolved	Total Phosphorous
Calcium Carbonate	Potassium – Dissolved
Chloride	Silicon – Dissolved
Chromium – Dissolved	Sodium – Dissolved
Conductivity	Total Dissolved Solids (TDS)
Copper – Dissolved	Sulphate
Iron – Dissolved	Uranium – Dissolved
Lead – Dissolved	Zinc – Dissolved
<b>Volatile Organic Compounds (VOC's)</b>	
BTEX	
<b>Other Organics</b>	
Biological Oxygen Demand (BOD)	Chemical Oxygen Demand (COD)
Dissolved Organic Carbon (DOC)	
<b>Field Parameters</b>	
pH	Groundwater Elevation
Conductivity	Dissolved Oxygen
Temperature	

**Note:** The director may revise this schedule at any time.  
All metals (except Arsenic) are to be sampled for dissolved analysis.  
Dissolved samples should be filtered in the field and preserved in the field at time of sampling. If dissolved samples are not to be filtered and preserved in the field, the director and the laboratory must be notified prior to sampling.