



Environment and Climate Change

Environmental Approvals Branch
Box 35, 14 Fultz Boulevard
Winnipeg MB R3Y 0L6
T 204-945-8321 F 204-945-5229
EABDirector@gov.mb.ca

Public Registry File Number: 6000.00
File Number: 22132

September 24, 2024

Meagan Fisher
Public Works Clerk
Rural Municipality of Woodlands
Box 10
Woodlands MB R0C 3H0
pwclerk@rmwoodlands.ca

Dear Meagan Fisher:

Re: Woodlands Waste Transfer Station Permit No. 58463 P2

Please find enclosed Permit No. 58463 P2 in response to your application dated July 17, 2024, and additional information received on September 4, 2024. You wish to continue to operate the Woodlands Waste Transfer Station on portions of SE and SW 02-14-03 WPM within the Rural Municipality of Woodlands.

The Rural Municipality of Woodlands must follow all permit requirements and federal, provincial, and municipal regulations and by-laws.

Anyone affected by this decision may appeal, in writing, to the Minister of Environment and Climate Change at minecc@manitoba.ca by October 24, 2024. The permit is available on the public registry at <https://www.gov.mb.ca/sd/eal/registries/6000wmfpermits/index.html>

If you have any questions about this approval, please contact Tyler Kneeshaw, Regional Supervisor, Environmental Compliance and Enforcement Branch at EnvCEInterlake@gov.mb.ca or 204-870-1598.

Sincerely,

Original Signed By
Agnes Wittmann
Director
The Environment Act

Enclosure

- c. Tyler Kneeshaw – Environmental Compliance and Enforcement
Desalegn Edossa – Environmental Approvals

Transfer Station Operating Permit

File No. : 22132

Permit No.: 58463 P2

Issue Date: September 24, 2024

Following the Waste Management Facilities Regulation under The Environment Act, the Rural Municipality of Woodlands is hereby permitted to operate the Woodlands Waste Transfer Station on portions of SE and SW 02-14-03 WPM within the Rural Municipality of Woodlands, Manitoba. Schedule A of this permit identifies the facility. The transfer station is located within the Woodlands Waste Disposal Ground, which is now closed.

This permit is subject to being amended, suspended, or revoked under sections 7 and 9 of the Waste Management Facilities Regulation.

General Terms and Operating Conditions

1. This permit expires on September 24, 2029.
2. The operator must maintain and operate the facility following the Waste Management Facilities Regulation and any future amendments and this permit.
3. The operator must:
 - a) review and update the operations manual at least every five years, or at an earlier time if required by the director; and
 - b) submit the operations manual to the director or environment officer upon request.
4. The operator must obtain approval in writing from the director before altering the facility.

Site Access and Control

5. The operator must restrict access to the facility when site supervision is not provided, with a locked gate, barrier or other system approved in writing by an environment officer.

Materials Acceptance and Handling

6. The operator must:
 - a) segregate materials collected for recycling or reuse;
 - b) temporarily stockpile these materials in designated areas with clear signage; and
 - c) must maintain these areas to control weeds, vectors, and the quality of the materials.
7. The operator must remove all materials received at the facility regularly or upon the request of an environment officer, within the timeframe specified.
8. The operator must implement control measures to prevent the attraction and sustenance of rodents and scavenging vectors.
9. The operator must not accept any livestock or other animal mortalities at the facility.

Surface Water Management

10. The operator must construct the facility such that all uncontaminated surface water flows to the perimeter ditch and impacted water from all material storage areas is contained within the facility boundaries.

Burning of Specified Waste

11. The operator must only burn:
 - a) separated and readily combustible materials such as boughs, leaves, loose straw, paper products, cardboard, non-salvageable untreated wood, and packing materials derived from wood; and
 - b) when there is an appropriate volume of materials as identified in clause 11 (a) of this permit.

Composting

12. The operator must, unless otherwise approved by an environment officer, compost only yard and leaf waste.

Final Cell Closure

13. The operator must, within 90 days of the date of this permit, submit a final closure plan of Woodlands Waste Disposal Ground to the director for review and approval.

Monitoring and Reporting Requirements

14. The operator must collect, store, and analyze groundwater monitoring well samples using approved field and laboratory techniques for dissolved analysis. The operator must retain the analytical results in a format acceptable to the environment officer.
15. The operator must sample the groundwater monitoring wells for those parameters identified in Schedule B of this permit once per year, or at a frequency approved by the environment officer.
16. The operator must submit an annual report, in a format acceptable to the environment officer, detailing the sampling methodology, field observations, and results of groundwater sampling analyses, complete with previous results and trends. The operator must submit the report annually to an environment officer no later than December 31st of each year.

Revocation

17. This permit replaces Permit No. 58463 P1, which is rescinded.

Original Signed By
Agnes Wittmann
Director
The Environment Act

Schedule A to Permit No. 58463 P2

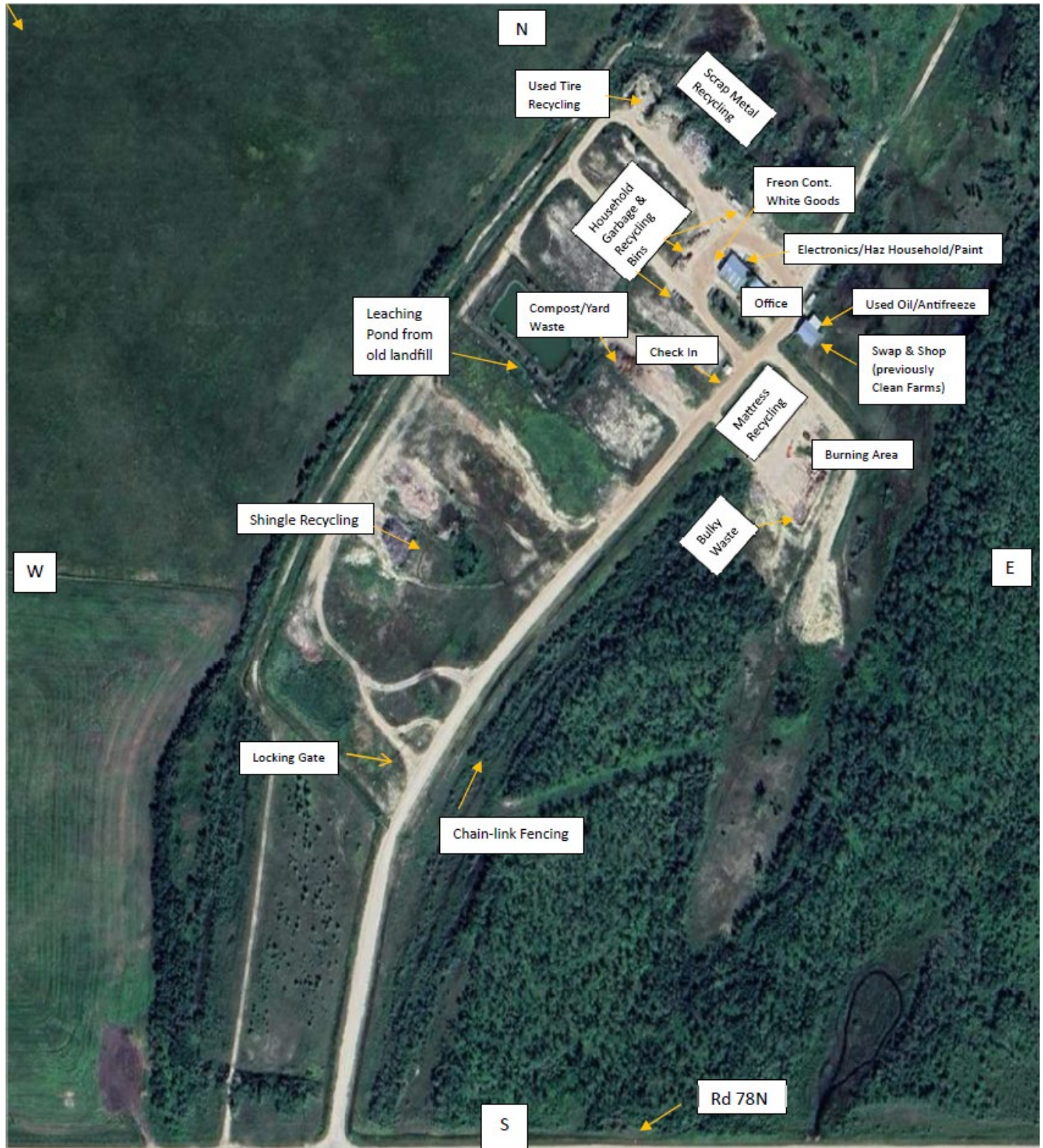


Figure 1 Facility layout

Schedule B to Permit No. 58463 P2
Groundwater chemistry parameters following clause 15 of this permit

Chemical Parameters		
Inorganics		
Alkalinity – Total		Magnesium – Dissolved
Ammonia – Total		Manganese – Dissolved
Arsenic – Dissolved		Mercury – Dissolved
Barium – Dissolved		Nitrate - Reported as N
Boron – Dissolved		Nitrite - Reported as N
Cadmium – Dissolved		Total Kjeldahl Nitrogen - Reported as N
Calcium – Dissolved		Total Phosphorous
Calcium Carbonate		Potassium – Dissolved
Chloride		Silicon – Dissolved
Chromium – Dissolved		Sodium – Dissolved
Conductivity		Total Dissolved Solids (TDS)
Copper – Dissolved		Sulphate
Iron – Dissolved		Uranium – Dissolved
Lead – Dissolved		Zinc – Dissolved
Volatile Organic Compounds (VOCs)		
BTEX		
Other Organics		
Biological Oxygen Demand (BOD)		Chemical Oxygen Demand (COD)
Dissolved Organic Carbon (DOC)		
Field Parameters		
pH		Groundwater Elevation
Conductivity		Dissolved Oxygen
Temperature		

Note: The director may revise this schedule. All dissolved samples should be filtered in the field and preserved in the field at the time of sampling. The operator must notify the director and the laboratory for dissolved samples not filtered and preserved in the field.