



Environment and Climate Change

Environmental Approvals Branch
Box 35, 14 Fultz Boulevard
Winnipeg MB R3Y 0L6
T 204 945-8321 F 204 945-5229
EABDirector@gov.mb.ca

Public Registry File Number: 6000.00
File Number: 87276

May 31, 2024

Cameron Prichard
EH&S Manager - Regulatory Compliance
GFL Environmental Ltd.
4208-84th Ave NW
Edmonton AB T6B 3N5
cprichard@gflenv.com

Dear Cameron Prichard:

Re: GFL – Kenaston Material Recovery Facility Permit No. 69195

Please find enclosed Permit No. 69195 in response to your application dated February 15, 2024. You wish to operate the GFL – Kenaston Material Recovery Facility on 1090 Kenaston Blvd in the City of Winnipeg.

GFL Environmental Ltd must follow all permit requirements and federal, provincial, and municipal regulations and by-laws.

Anyone affected by this decision may appeal, in writing, to the Minister of Environment and Climate Change at minecc@manitoba.ca by June 30, 2024. The permit is available on the public registry at <https://www.gov.mb.ca/sd/eal/registries/6000wmfpermits/index.html>

If you have any questions about this approval, please contact Sonja Bridges, A/Regional Supervisor, Environmental Compliance and Enforcement Branch at EnvCEWinnipeg@gov.mb.ca or 204-918-4271.

Sincerely,

Original Signed By
Agnes Wittmann
Director
The Environment Act

Enclosure

- c. Sonja Bridges – Environmental Compliance and Enforcement
Desalegn Edossa – Environmental Approvals

Material Recovery Facility Operating Permit



File No. :87276

Permit No.: **69195**

Issue Date: **May 31, 2024**

Following the Waste Management Facilities Regulation under The Environment Act, GFL Environmental Ltd. is hereby permitted to run a material recovery facility to be known as GFL–Kenaston Material Recovery Facility at 1090 Kenaston Blvd, Winnipeg, Manitoba within the City of Winnipeg, Manitoba. Schedule A of this permit identifies the facility.

This permit is subject to being amended, suspended, or revoked under sections 7 and 9 of the Waste Management Facilities Regulation.

Definitions

in this permit,

"director" means an employee so designated under The Environment Act unless otherwise specified in the permit;

"liquid collection system" means a metal bin with screen inserted to leave a space at the bottom for residual liquid to accumulate leaving solid/shredded materials at the top;

"material recovery facility" means a facility where comingled recyclable materials are separated, processed or where source-separated recyclable materials are processed for sale;

"noise nuisance" means an unwanted sound, in an affected area, which is annoying, troublesome, or disagreeable to a person:

- a) residing in an affected area;
- b) working in an affected area; or
- c) present at a location in an affected area which is normally open to members of the public;

if the unwanted sound

- d) is the subject of at least five written complaints, received by the director in a form satisfactory to the director and within a 90-day period, from five different persons falling within clauses a), b), or c), who do not live in the same household; or
- e) is the subject of at least one written complaint, received by the director in a form satisfactory to the director, from a person falling within clauses a), b), or c) and the director is of the opinion that if the unwanted sound had occurred in a more densely populated area there would have been at least five written complaints received within a 90-day period, from five different persons who do not live in the same household;

"odour nuisance" means a continuous or repeated odour, smell or aroma, in an affected area, which is offensive, obnoxious, troublesome, annoying, unpleasant, or disagreeable to a person:

- a) residing in an affected area;
- b) working in an affected area; or

- c) present at a location in an affected area which is normally open to members of the public;

if the odour, smell, or aroma

- d) is the subject of at least five written complaints, received by the director in a form satisfactory to the director and within a 90-day period, from five different persons falling within clauses (a), (b), or (c), who do not live in the same household; or
- e) is the subject of at least one written complaint, received by the director in a form satisfactory to the director, from a person falling within clauses (a), (b), or (c) and the director is of the opinion that if the odour, smell, or aroma had occurred in a more densely populated area there would have been at least five written complaints received within a 90-day period, from five different persons who do not live in the same household.

"operator" means the holder of a licence or permit issued in respect of the waste management facility.

"shredder" means a tool or machine that is used for cutting things into small pieces.

General Terms and Operating Conditions

1. This permit expires on May 31, 2029.
2. The operator must maintain and operate the facility following the Waste Management Facilities Regulation and any future amendments, and this permit.
3. The operator must develop an operations manual, within 12 months of the date of this permit, detailing the operation and maintenance for this facility following the Waste Management Facilities Regulation and any future amendments thereof. The operator must provide the manual to an environment officer upon request.
4. The operator must obtain approval in writing from the director before altering the facility.

Environmental Coordinator

5. The operator must, within 60 days of the date of issuance of this permit, designate an employee as the operator's environmental coordinator, whose job description will include assisting the:
 - a) operator in complying with the limits, terms, and conditions in this permit; and
 - b) assisting the senior management of the operator to manage environmental issues at the facility.
6. The operator must submit the name of the environmental coordinator in writing to the director within 14 days of the appointment and any subsequent appointment.

Material Storage and Processing

7. The operator must only accept for processing the following materials at the facility:
 - a) aluminum cans;
 - b) glasses;
 - c) plastic and cardboard packaging;

- d) used oil filters; and
 - e) other materials as approved by the director.
8. The operator must dispose of:
- a) the non-hazardous residual liquid created from the operation of the facility following the Waste Management Facilities Regulation or any future amendments; and
 - b) the hazardous residual liquid created from the operation following The Dangerous Goods Handling and Transportation Act or any future amendments.
9. The operator must not process any liquid containers or filters unless liquid collection system collecting liquid from the operation of the facility can contain all residual liquid released during the shredding process.
10. The operator must prevent any residual liquid waste arising from the operation from entering into the groundwater or surface water system.
11. The operator must, prior to processing waste in the shredder:
- a) inspect the waste to discover any potentially explosive or dangerous materials; and
 - b) if found, remove them from the site and dispose of them at a licensed facility following characterization of the waste.
12. The operator must place the shredded materials into metal bins with bottom valves to separate debris from residual liquid as identified in the proposal dated December 21, 2023.
13. The operator must shred the solid waste at a frequency as identified in the operation and maintenance plan per clause 3 of this permit or as required by an environment officer.

Facility Access and Supervision

14. The operator must secure the facility so that:
- a) gates are provided for all access locations to the facility; and
 - b) the gates are kept locked when an operator is not on duty, or the facility is closed.

Fire Reporting

15. The operator must, within 90 days of the date of issuance of this permit, prepare and maintain an emergency response contingency plan following the Canadian Centre for Occupational Health and Safety "Emergency Response Planning Guide" or other emergency planning guidelines acceptable to the director.
16. The operator must, in the event of a fire that continues in excess of 30 minutes, require implementation of the emergency response plan, or request fire suppression assistance from personnel outside of the facility (example: fire department) by:
- a) calling the fire department; and
 - b) reporting to the environmental emergency report line at 204-944-4888 (toll free 1-855-944-4888), identifying the type of materials involved, and the location of the fire.

Odour Nuisance

17. The operator must not cause or permit an odour nuisance to be created as a result of the construction, operation, or alteration of the facility, and must take such steps as the director may specify to eliminate or mitigate an odour nuisance.

Noise Nuisance

18. The operator must not cause or permit a noise nuisance to be created as a result of the operation or alteration of the facility, and must take such steps as the director may require to eliminate or mitigate a noise nuisance.

Materials Acceptance and Handling

19. The operator must implement control measures to prevent attraction and sustenance of rodents and scavenging vectors.
20. The operator must segregate materials collected for shredding and must temporarily stockpile these materials within Building B as identified in Schedule A of this permit in clearly designated enclosed containers or as otherwise approved by an environment officer.
21. The operator must remove the materials identified in clause 20 of this permit at a frequency identified in the operation and maintenance plan or as required by an environment officer.
22. The operator must not store any wastes, or materials separated out during processing that are not shredded, except in appropriate storage bins in a manner to prevent nuisance.
23. The operator must remove and dispose of all wastes identified in clause 22 of this permit at minimum every 30 days or at a frequency required by an environment officer.
24. The operator must, unless otherwise approved by an environment officer, not store any material outside Building B, as identified in Schedule A of this permit, except during receiving or shipping operations for a duration of not more than 48 hours.

Solid Waste

25. The operator must dispose of all non-hazardous solid waste collected at the facility, which is not shredded, recycled, or reused, only to a waste management facility operating under the authority of a permit issued according to the Waste Management Facilities Regulation or any future amendments, or a licence issued according to The Environment Act.

Retain Records and Annual Report

26. The operator must maintain records of the materials received and removed from the facility.
27. The operator must make the records as identified in clause 26 of this permit available to an environment officer upon request.

28. The operator must, on or before the 31st day of March of each year, submit to the director an annual report respecting all activities at the facility during the previous year. The report must be in a format acceptable to the director, and must contain at minimum the monthly breakdown of materials received, recycled, reused, processed, shredded, sold, removed and/or disposed.

Closure Plan

29. The operator must, within 90 days of date of this permit, submit a closure plan of the facility for approval by the director.
30. The operator must review and update the approved closure plan every five years or more frequently as the operator's preference, or at the request of the director.
31. The operator must, at least six months before the permanent closure of the facility:
- a) notify the director in writing of the intended closure; and
 - b) submit a final closure plan to the director for review and approval.
32. The operator must implement and maintain the closure plan as approved by the director.

Original Signed By
Agnes Wittmann
Director
The Environment Act

Schedule A to Permit No. 69195



Figure 1 Facility Layout

Schedule A to Permit No. 69195 (continued)

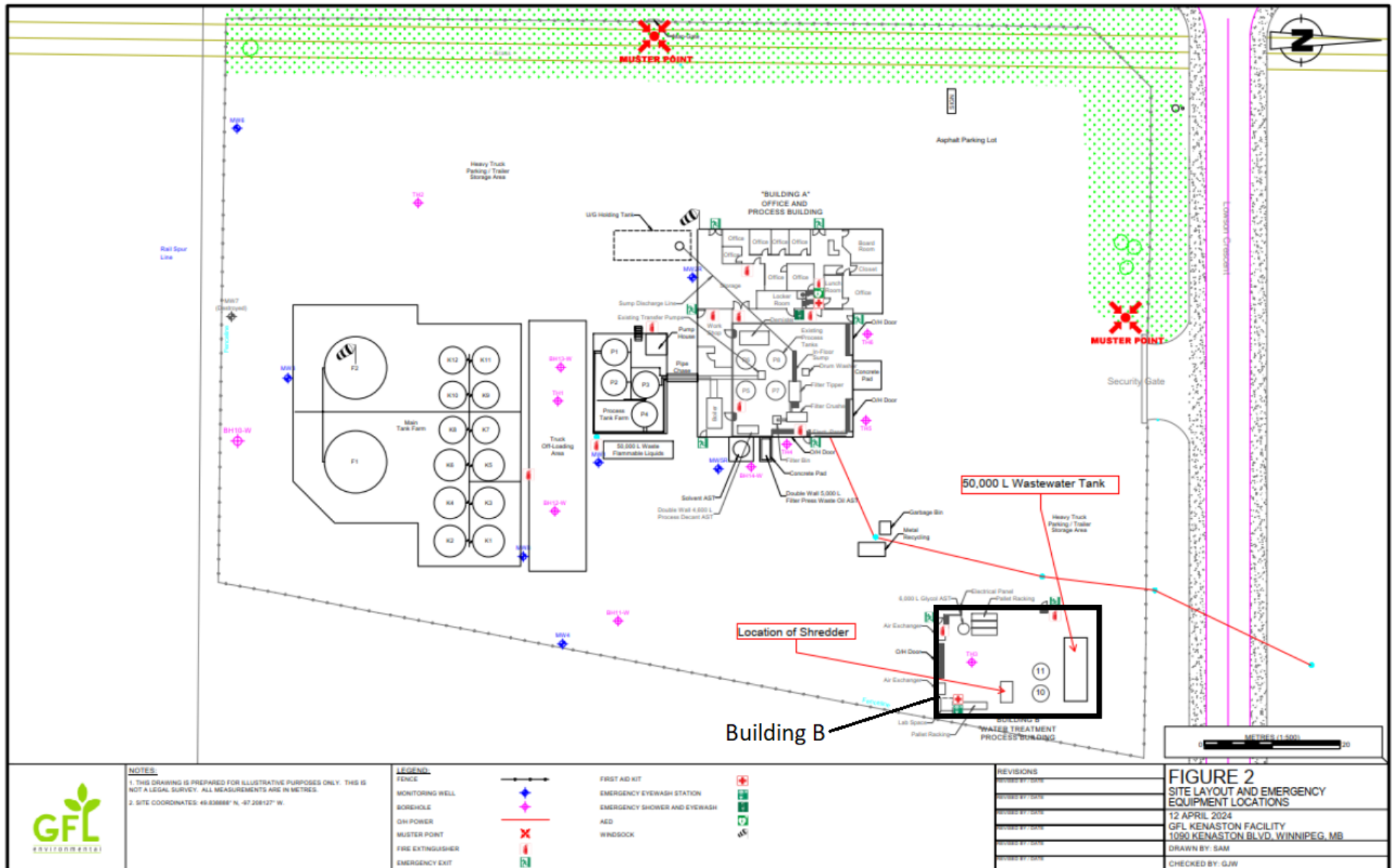


Figure 2 Facility Layout (continued)