



Environment and Climate Change

Environmental Approvals Branch
Box 35, 14 Fultz Boulevard
Winnipeg MB R3Y 0L6
T 204 945-8321 F 204 945-5229
EABDirector@gov.mb.ca

Public Registry File Number: 6000.00

File Number: 88368

October 10, 2024

Karina Ketelsen
Acting Chief Administrative Officer
Rossburn Municipality
Box 100
Rossburn MB R0J 1V0
cfo@rossburn.ca

Dear Karina Ketelsen:

Re: Rossburn Waste Transfer Station Permit No. 70185

Please find enclosed Permit No. 70185 in response to your application dated August 23, 2024, and additional information received on September 17, 2024. You wish to operate Rossburn Waste Transfer Station situated on portions of NW 26-19-25 WPM within Rossburn Municipality.

Rossburn Municipality must follow all permit requirements and federal, provincial, and municipal regulations and by-laws.

Anyone affected by this decision may appeal, in writing, to the Minister of Environment and Climate Change at minecc@manitoba.ca by November 09, 2024. The permit is available on the public registry at <https://www.gov.mb.ca/sd/eal/registries/6000wmfpermits/index.html>.

If you have any questions about this approval, please contact Kayla Hagenson, Acting Regional Supervisor, Environmental Compliance and Enforcement Branch at EnvCEWestern@gov.mb.ca or 204-648-4794.

Sincerely,

Original Signed By
Agnes Wittmann
Director
The Environment Act

Enclosure

- c. Kayla Hagenson – Environmental Compliance and Enforcement
Desalegn Edossa – Environmental Approvals

Transfer Station Operating Permit

File No. : 88368

Permit No.: 70185

Issue Date: October 10, 2024

Following the Waste Management Facilities Regulation under The Environment Act, Rossburn Municipality is hereby permitted to operate the Rossburn Waste Transfer Station situated on portions of NW 26-19-25 WPM within the Rossburn Municipality, Manitoba. Schedule A of this permit identifies the facility. The transfer station is located within the Rossburn Municipality Landfill, which is now closed.

This permit is subject to being amended, suspended, or revoked under sections 7 and 9 of the Waste Management Facilities Regulation.

Definition

in this permit,

"operator" means the holder of a licence or permit issued in respect of the waste management facility.

General Terms and Operating Conditions

1. This permit expires on October 10, 2025.
2. The operator must maintain and operate the facility following the Waste Management Facilities Regulation and any future amendments and this permit.
3. The operator must develop an operations manual, within 90 days of the date of this permit, detailing the operation and maintenance of this facility following the Waste Management Facilities Regulation and any future amendments thereof. The operator must provide the manual to an environment officer upon request.
4. The operator must obtain approval in writing from the director before altering the facility.

Materials Acceptance and Handling

5. The operator must:
 - a) segregate materials collected for recycling or reuse;
 - b) temporarily stockpile these materials in designated areas with clear signage; and
 - c) must maintain these areas to control weeds, vectors, and the quality of the materials.
6. The operator must remove all materials received at the facility regularly or upon the request of an environment officer, within the timeframe specified.
7. The operator must implement control measures to prevent the attraction and sustenance of rodents and scavenging vectors.

Hazardous Wastes

8. The operator must not collect, store, and dispose of any hazardous waste at the facility without a licence issued under The Dangerous Goods Handling and Transportation Act. If any incidental hazardous waste is found disposed of at the facility, it must be managed following The Dangerous Goods Handling and Transportation Act, and other federal, provincial, and municipal regulations.

Surface Water Management

9. The operator must construct the facility such that all uncontaminated surface water flows to the perimeter ditch and impacted water from all material storage areas is contained within the facility boundaries.

Burning of Specified Waste

10. The operator must only burn:
 - a) separated and readily combustible materials such as boughs, leaves, loose straw, paper products, cardboard, non-salvageable untreated wood, and packing materials derived from wood; and
 - b) when there is an appropriate volume of materials as identified in clause 10 (a) of this permit.

Compliance Plan

11. The operator must submit a waste management compliance plan to the director for approval by May 1, 2025. The plan must identify the long-term waste management solutions for the municipality.

Closure Plan

12. The operator must, within 90 days of the date of this permit, submit a final closure plan of the Rosburn Municipality Landfill to the director for approval.

Original Signed By
Agnes Wittmann
Director
The Environment Act

Schedule A to Permit No. 70185

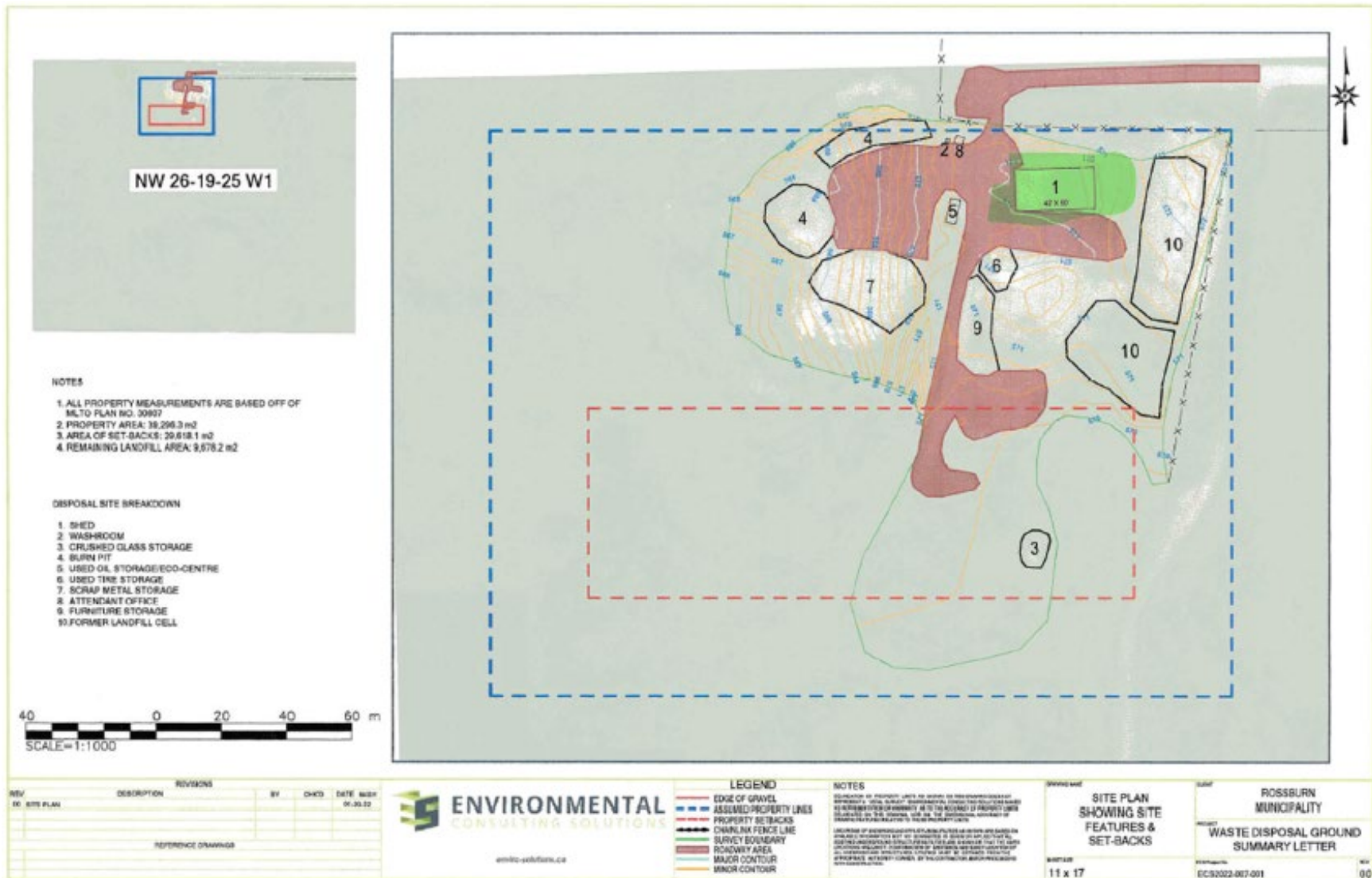


Figure 1: Rossburn Waste Transfer Station Facility Layout