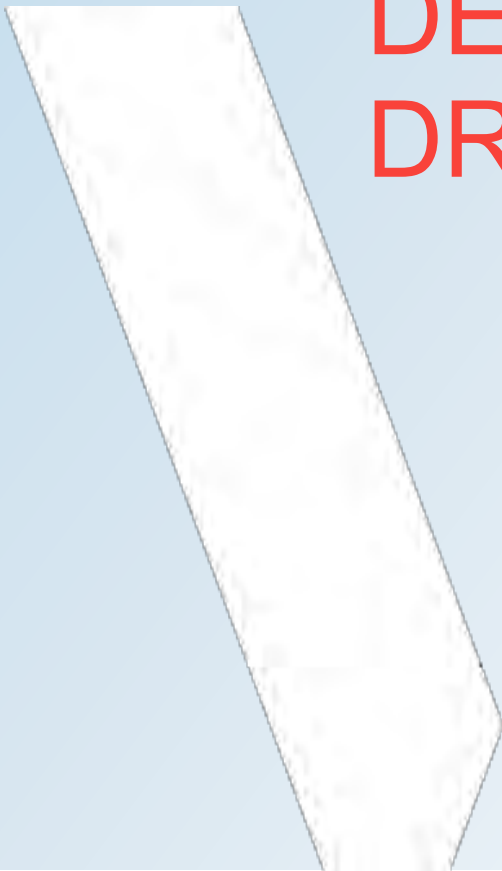


APPENDIX

B

PRELIMINARY
DESIGN
DRAWINGS





MATCH TO SHEET NO. 2

FOR 00% SUBMISSION
FEB 21, 2021

LEGEND-PLAN:

- | | | | |
|------------------------|--|---------------------------|--|
| EXISTING PROPERTY LINE | | MULTI-USE TR-IL | |
| PROPOSED PROPERTY LINE | | GR-VEL | |
| RET-INING W-LL | | -SPH-LT | |
| PROPOSED CULVERT | | RO-DW-Y DESIGN (CONCRETE) | |
| R-IL | | RO-D CLOSURE | |

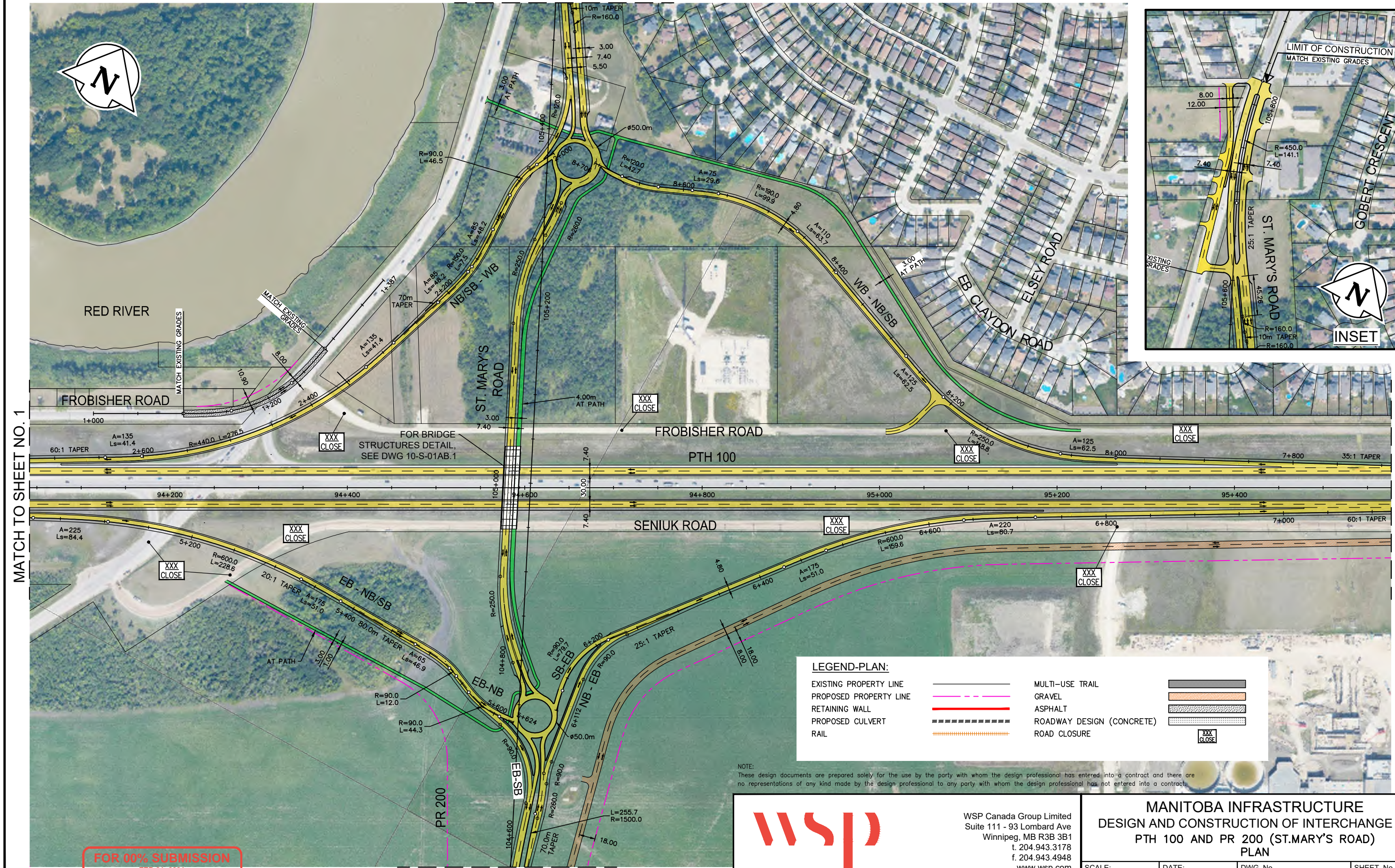
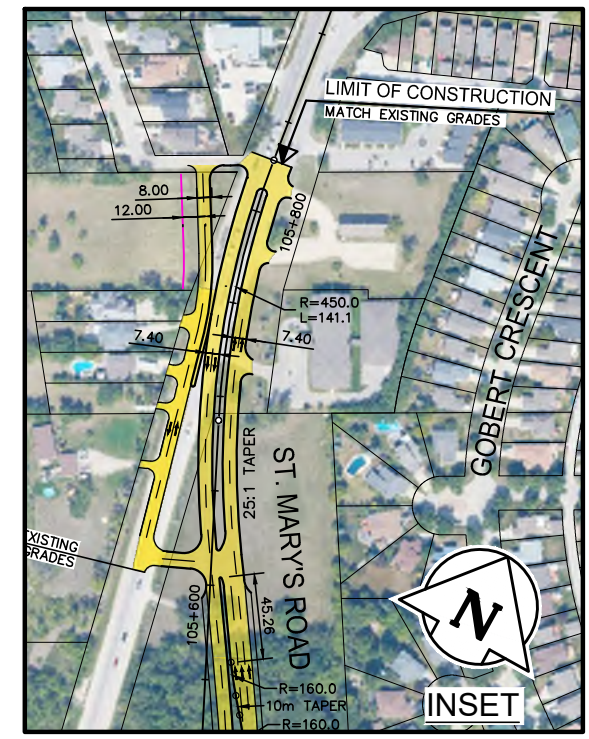
NOTE:
These design documents are prepared solely for the use by the party with whom the design professional has entered into a contract and there are no representations of any kind made by the design professional to any party with whom the design professional has not entered into a contract.

WSP Canada Group Limited
Suite 111 - 93 Lombard Ave
Winnipeg, MB R3B 3B1
t. 204.943.3178
f. 204.943.4948
www.wsp.com

MANITOBA INFRASTRUCTURE
DESIGN AND CONSTRUCTION OF INTERCHANGE AT
PTH 100 -ND PR 200 (ST.M-RY'S RO-D)
PL-N

SCALE: 1:4000	DATE: 21-02-11	DWG. No. 211-00229-00	SHEET. No. 1 OF 5
------------------	-------------------	--------------------------	----------------------

MATCH TO INSET



MATCH TO SHEET NO. 1

MATCH TO SHEET NO. 5

LEGEND-PLAN:

EXISTING PROPERTY LINE	—	MULTI-USE TRAIL	▬
PROPOSED PROPERTY LINE	- - -	GRAVEL	▨
RETAINING WALL	—	ASPHALT	▨
PROPOSED CULVERT	- - -	ROADWAY DESIGN (CONCRETE)	▨
RAIL	—	ROAD CLOSURE	XXX CLOSE

NOTE:
These design documents are prepared solely for the use by the party with whom the design professional has entered into a contract and there are no representations of any kind made by the design professional to any party with whom the design professional has not entered into a contract.

FOR 00% SUBMISSION
FEB 21, 2021

MATCH TO SHEET NO. 3

	WSP Canada Group Limited Suite 111 - 93 Lombard Ave Winnipeg, MB R3B 3B1 t. 204.943.3178 f. 204.943.4948 www.wsp.com		MANITOBA INFRASTRUCTURE DESIGN AND CONSTRUCTION OF INTERCHANGE AT PTH 100 AND PR 200 (ST.MARY'S ROAD) PLAN	
	SCALE: 1:4000	DATE: 21-02-11	DWG. No. 211-00229-00	SHEET. No. 2 OF 5



MATCH TO SHEET NO. 4



LEGEND-PLAN:

EXISTING PROPERTY LINE		MULTI-USE TR-IL	
PROPOSED PROPERTY LINE		GR-VEL	
RET-INING W-LL		-SPH-LT	
PROPOSED CULVERT		RO-DW-Y DESIGN (CONCRETE)	
R-IL		RO-D CLOSURE	

NOTE:
These design documents are prepared solely for the use by the party with whom the design professional has entered into a contract and there are no representations of any kind made by the design professional to any party with whom the design professional has not entered into a contract.

FOR 00% SUBMISSION
FEB 21, 2021



WSP Canada Group Limited
Suite 111 - 93 Lombard Ave
Winnipeg, MB R3B 3B1
t. 204.943.3178
f. 204.943.4948
www.wsp.com

MANITOBA INFRASTRUCTURE
DESIGN AND CONSTRUCTION OF INTERCHANGE AT
PTH 100 -ND PR 200 (ST.M-RY'S RO-D)
PL-N

SCALE: 1:4000	DATE: 21-02-11	DWG. No. 211-00229-00	SHEET. No. 3 OF 5
------------------	-------------------	--------------------------	----------------------



MATCH TO SHEET NO. 3

NOTE:
 These design documents are prepared solely for the use by the party with whom the design professional has entered into a contract and there are no representations of any kind made by the design professional to any party with whom the design professional has not entered into a contract.

LEGEND-PLAN:

- | | | | |
|------------------------|--|---------------------------|--|
| EXISTING PROPERTY LINE | | MULTI-USE TR-IL | |
| PROPOSED PROPERTY LINE | | GR-VEL | |
| RET-INING W-LL | | -SPH-LT | |
| PROPOSED CULVERT | | RO-DW-Y DESIGN (CONCRETE) | |
| R-IL | | RO-D CLOSURE | |

FOR 00% SUBMISSION
FEB 21, 2021

WSP Canada Group Limited
 Suite 111 - 93 Lombard Ave
 Winnipeg, MB R3B 3B1
 t. 204.943.3178
 f. 204.943.4948
 www.wsp.com








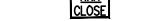
MANITOBA INFRASTRUCTURE DESIGN AND CONSTRUCTION OF INTERCHANGE AT PTH 100 -ND PR 200 (ST.M-RY'S RO-D) PL-N			
SCALE: 1:4000	DATE: 21-02-11	DWG. No. 211-00229-00	SHEET. No. 4 OF 5

MATCH TO SHEET NO. 2



FOR 00% SUBMISSION
FEB 21, 2021

LEGEND-PLAN:

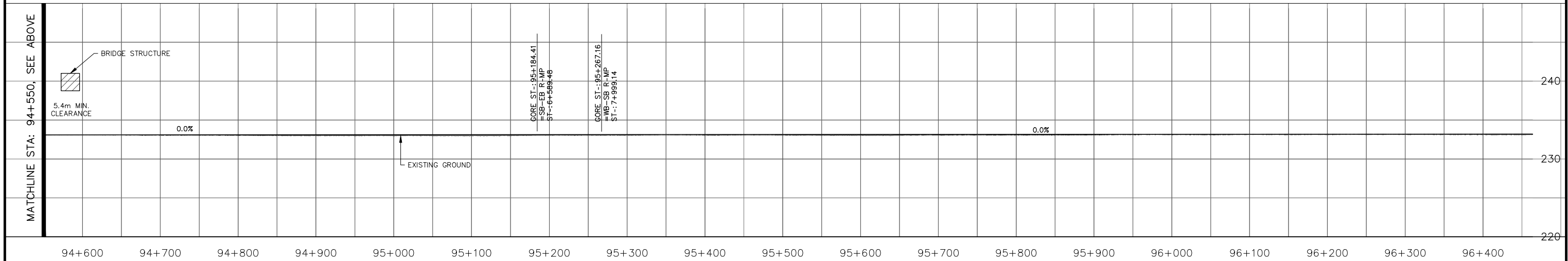
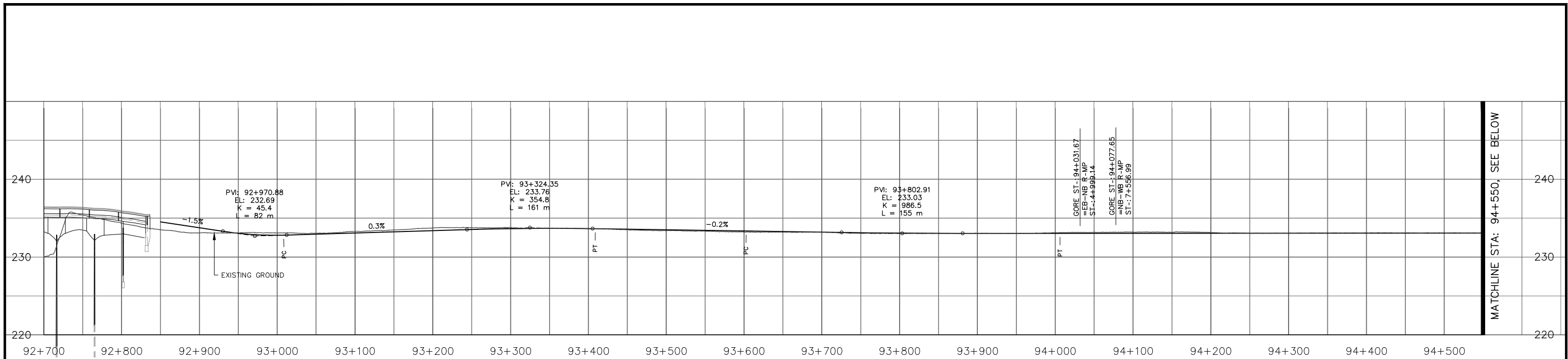
EXISTING PROPERTY LINE		MULTI-USE TRAIL	
PROPOSED PROPERTY LINE		GRAVEL	
RETAINING WALL		ASPHALT	
PROPOSED CULVERT		ROADWAY DESIGN (CONCRETE)	
RAIL		ROAD CLOSURE	



WSP Canada Group Limited
Suite 111 - 93 Lombard Ave
Winnipeg, MB R3B 3B1
t. 204.943.3178
f. 204.943.4948
www.wsp.com

MANITOBA INFRASTRUCTURE
DESIGN AND CONSTRUCTION OF INTERCHANGE AT
PTH 100 AND PR 200 (ST.MARY'S ROAD)
PLAN


SCALE: 1:4000	DATE: 21-02-11	DWG. No. 211-00229-00	SHEET. No. 5 OF 5
------------------	-------------------	--------------------------	----------------------



PTH 100 AT ST.MARY'S ROAD
H = 1:5,000
V = 1:500

METRIC
ALL MEASUREMENTS METRES,
UNLESS STATED OTHERWISE

NOTE:
These design documents are prepared solely for the use by the party with whom the design professional has entered into a contract and there are no representations of any kind made by the design professional to any party with whom the design professional has not entered into a contract.

	WSP Canada Group Limited Suite 111 - 93 Lombard Ave Winnipeg, MB R3B 3B1 t. 204.943.3178 f. 204.943.4948 www.wsp.com		MANITOBA INFRASTRUCTURE DESIGN AND CONSTRUCTION OF INTERCHANGE AT PTH 100 AND PR 200 (ST.MARY'S ROAD) PROFILES	
	SCALE: 1:4000	DATE: 21-02-11	DWG. No. 211-00229-00	SHEET. No. 1 OF 2