

To: *Jonathan Wiens*  
*Licensing & Environmental Dept.*  
*Manitoba Hydro*

From: *Robert Berger*  
  
*Wildlife Resource Consulting*  
*Services MB Inc.*

File: *Portage la Prairie BP6/7*  
*Transmission Project*  
*BP6/7\_EA\_FA543*

Date: *December 16, 2020*

---

## **Reference: Field Survey Report – Portage la Prairie BP6/7 Transmission Project Breeding Bird Survey 2020**

### **OBJECTIVE**

The objective of this field survey report is to outline the results of a breeding bird survey conducted in the Portage la Prairie BP6/7 Transmission Project study area (Map 1) on July 4, 2020. The purpose of this survey was to supplement existing breeding bird data (e.g., Manitoba Breeding Bird Atlas) with relative abundance and habitat conditions along various right-of-way (ROW) options.

### **METHODS**

Breeding bird 5-minute point counts were conducted at 12 roadside sites in the Portage la Prairie BP6/7 Transmission Project study area (Map 1). Pre-selected sample sites focused on naturalized grasslands and wetlands. Photographs were taken at each sample site (see Appendix – Photographs). Some pre-selected sites were not accessible due to private property or other accessibility concerns. The survey was original; previous data do not exist at these locations.

### **RESULTS**

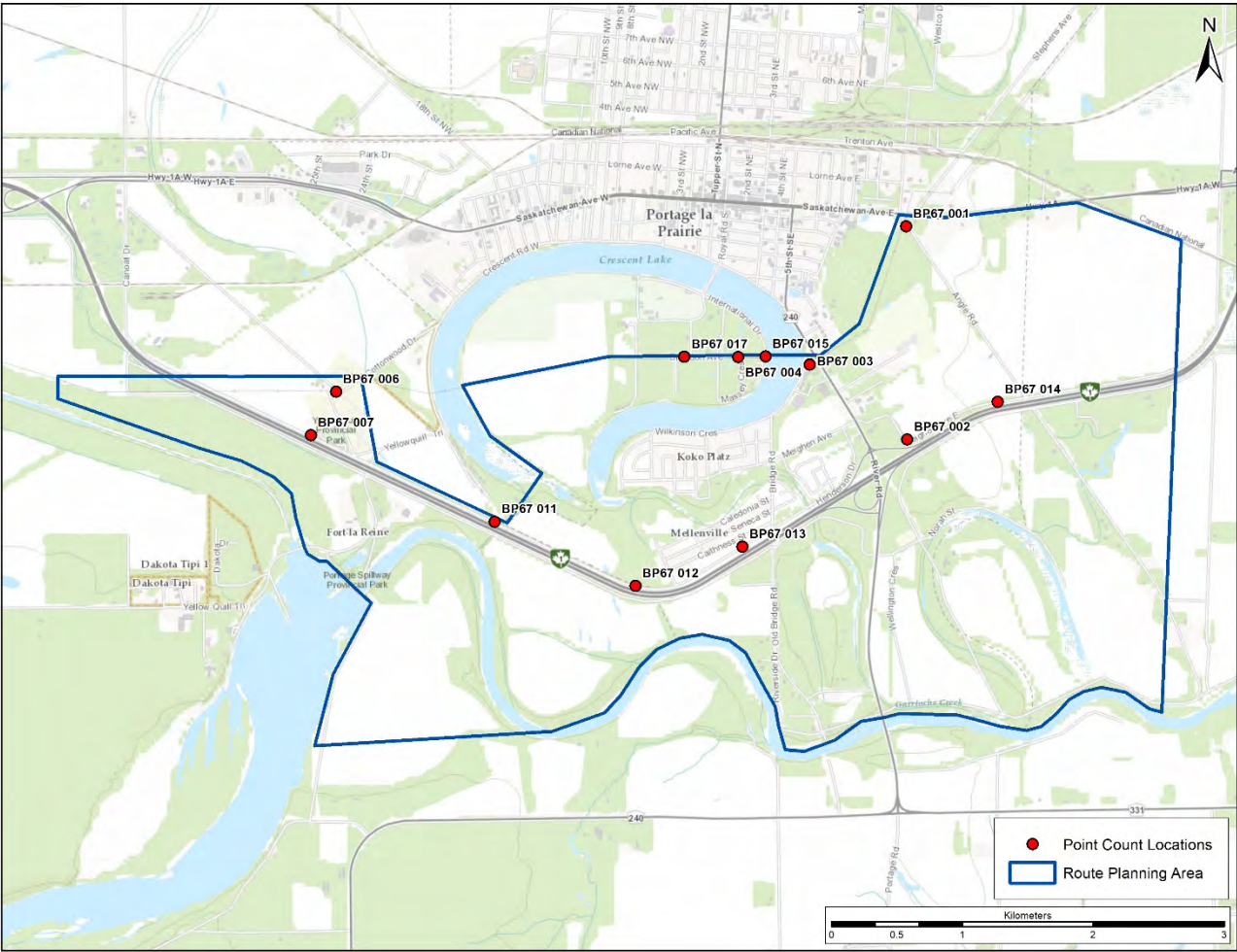
Results suggest that about 43 bird species and 239 individuals were heard/observed (Table 1). Diversity averaged about 8.5 (range 4 to 13) species per plot (Table 2). Relative abundance averaged 19.9 (range 8 to 63) individuals per plot (Table 2). The most common aquatic bird species were American White Pelican, Canada Goose and Mallard. The most common terrestrial bird species were American Crow, Common Grackle and Red-winged Blackbird (Table 1). Important grassland bird species included Western Meadowlark and Savannah Sparrow. Forest birds such as Red-eyed Vireo and Yellow Warbler were common. No bird Species-at-Risk were detected during the survey.

### **INFORMATION AND RECOMMENDATIONS**

The majority of the survey area consists of developed areas, disturbed roadside ditches and agricultural lands, occasionally interspersed with small naturalized grasslands and wetlands. The most significant habitat type in the study area is associated with Crescent Lake, where riparian and aquatic bird species (i.e., waterfowl, pelicans) are prominent and tend to be numerous. Most birds observed in this study are common to suburban developments and agricultural lands. Although no Species-at-Risk were observed, there is some potential for barn swallow, bobolink and other Species-at-Risk to occur. As a cautionary note, the survey effort was limited, and it was conducted late in the breeding bird season,

Robert Berger  
Wildlife Resource Consulting Services MB Inc.  
Phone: (204) 452-2197

MAP 1 – BP6/7 Route Planning Area and Sample Sites



**TABLE 1 – Bird Species Detected in the BP6/7 Study Area**

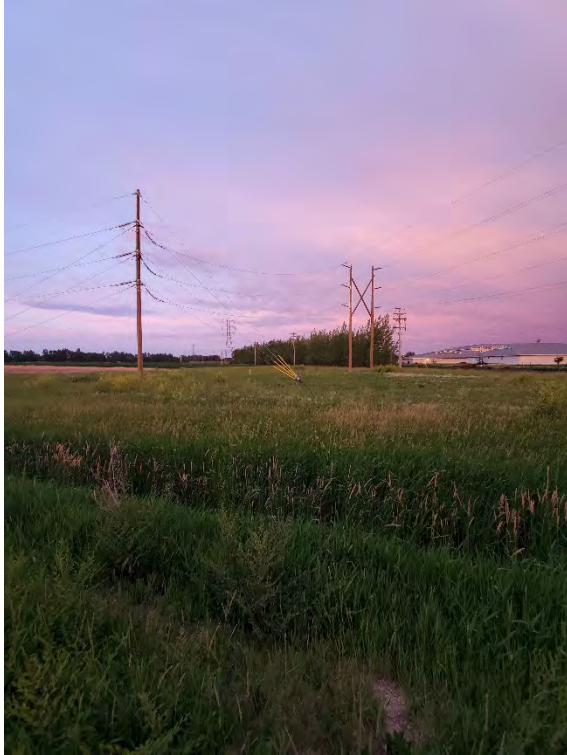
	BP67 001	BP67 002	BP67 003	BP67 004	BP67 006	BP67 007	BP67 011	BP67 012	BP67 013	BP67 014	BP67 015	BP67 017	Grand Total
American Coot											1		1
American Crow			3	3	2		3	2	1		1	1	16
American Goldfinch				1		1	2		2	1			7
American Redstart												1	1
American Robin				1	2				1			1	5
American White Pelican			27								25		52
Baltimore Oriole								1					1
Black-billed Magpie								1					1
Black-capped Chickadee					2							1	3
Blue Jay					1								1
Brown-headed Cowbird						1						1	2
Canada Goose				1							19		20
Chestnut-sided Warbler							1						1
Chipping Sparrow			1										1
Clay-coloured Sparrow						1			1			1	3
Common Grackle			14		1								15
Common Tern											5		5
Common Yellowthroat						1							1
Eastern Kingbird			1	1									2
Eastern Phoebe												1	1
Franklin's Gull											1		1
Gray Catbird								1				2	3
Great Crested Flycatcher									1				1
Green-winged Teal											1		1
Hairy Woodpecker			1	1									2
House Sparrow	2		1										3
House Wren			1	1	1		1	1				1	6
Killdeer							2						2
Lark Sparrow	1												1
Least Flycatcher					1		1	1					3
Mallard	2		9	1							6	1	19
Mourning Dove		1											1
Red-eyed Vireo				3			2	1	1			3	10
Red-winged Blackbird	3	2	1			2				3		1	12
Ring-billed Gull			4										4
Savannah Sparrow	1	2								1			4
Sedge Wren	1												1
Song Sparrow	1			1		1	1			1	1		6
Vesper Sparrow						1							1
Warbling Vireo									1				1
Western Meadowlark		3				1				3			7
White-breasted Nuthatch					1		1						2
Yellow Warbler						1	1	3	2			2	9
<b>Grand Total</b>	<b>11</b>	<b>8</b>	<b>63</b>	<b>14</b>	<b>11</b>	<b>10</b>	<b>15</b>	<b>11</b>	<b>10</b>	<b>9</b>	<b>60</b>	<b>17</b>	<b>239</b>

**TABLE 2 – Bird Species Diversity and Abundance by Plot**

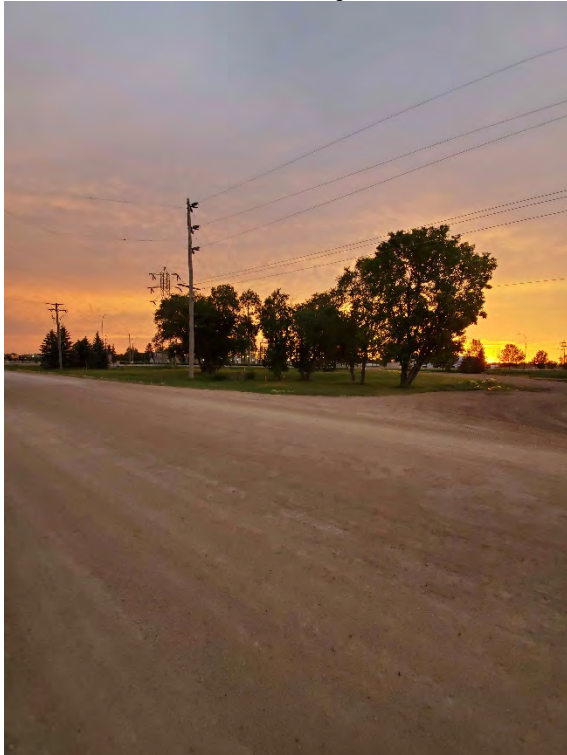
	<b>Diversity</b>	<b>Abundance</b>
BP67 001	7	11
BP67 002	4	8
BP67 003	11	63
BP67 004	10	14
BP67 006	8	11
BP67 007	9	10
BP67 011	10	15
BP67 012	8	11
BP67 013	8	10
BP67 014	5	9
BP67 015	9	60
BP67 017	13	17
<b>Average</b>	<b>8.5</b>	<b>19.9</b>

## **APPENDIX - PHOTOGRAPHS:**

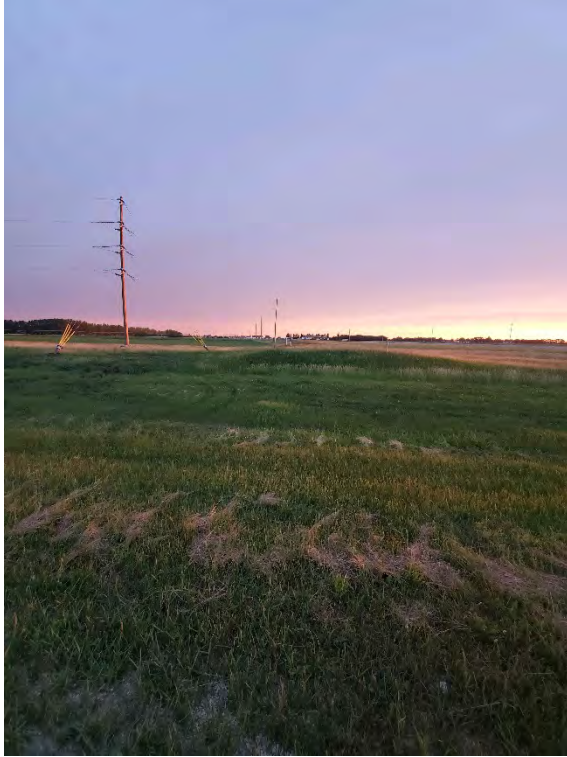
Site BP6/7 001 – View west, photo 20200704\_052949



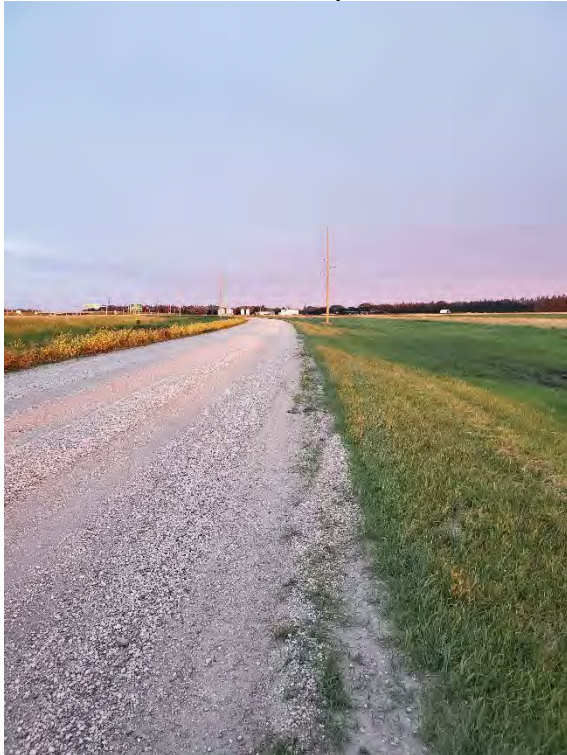
Site BP6/7 001 – View east, photo 20200704\_052955



Site BP6/7 014 – View north, photo 20200704\_054017



Site BP6/7 014 – View east, photo 20200704\_054027

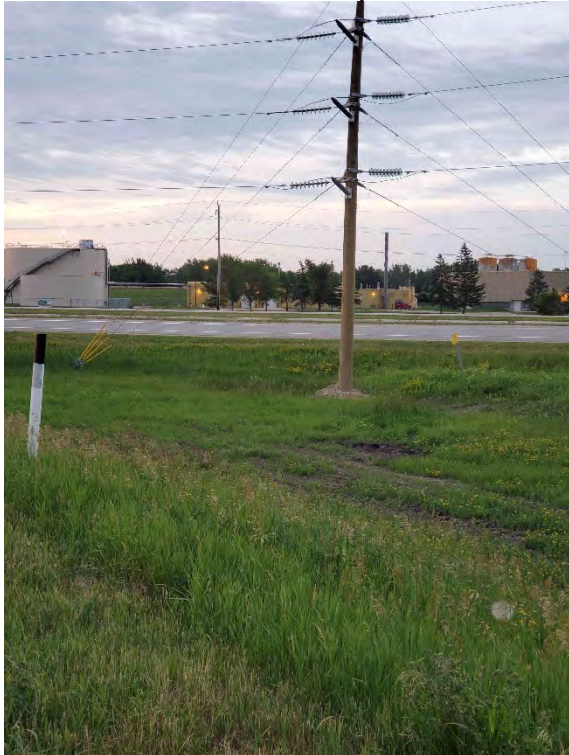




Site BP6/7 002 – View west, photo 20200704\_055020



Site BP6/7 002 – View south, photo 20200704\_055035



Site BP6/7 003 – View northeast, photo 20200704\_055947



Site BP6/7 003 – View northwest, photo 20200704\_055951





Site BP6/7 013 – View west, photo 20200704\_061043



Site BP6/7 013 – View northwest, photo 20200704\_061047



Site BP6/7 013 – Milkweed photo 20200704\_061300



Site BP6/7 012 – View west, photo 20200704\_061847



Site BP6/7 012 – View northwest, photo 20200704\_061850





Site BP6/7 011 – View west, photo 20200704\_062958



Site BP6/7 011 – View northwest, photo 20200704\_063001





Site BP6/7 007 – View west, photo 20200704\_063851



Site BP6/7 007 – View northwest, photo 20200704\_063855



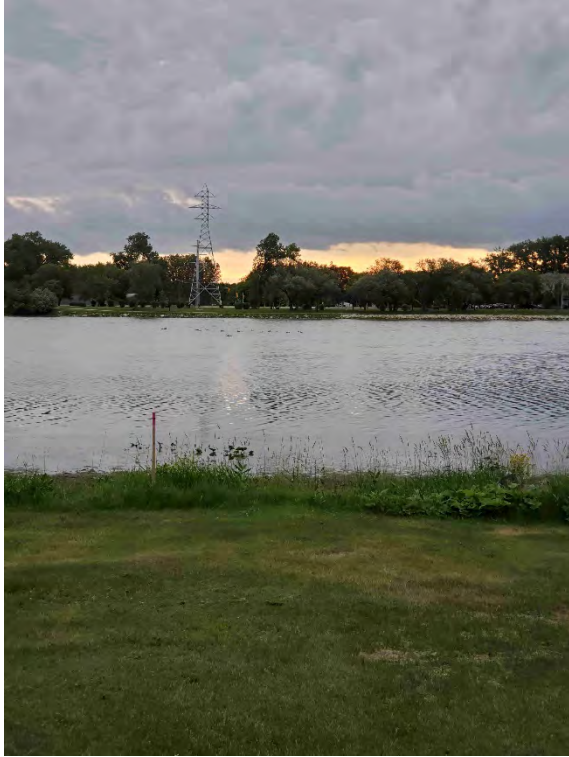
Site BP6/7 006 – View west, photo 20200704\_065733



Site BP6/7 006 – View east, photo 20200704\_065756



Site BP6/7 015 – View east, photo 20200704\_071956



Site BP6/7 015 – View west, photo 20200704\_072004





Site BP6/7 004 – View east, photo 20200704\_072805



Site BP6/7 004 – View south, photo 20200704\_072808





Site BP6/7 004 – View west, photo 20200704\_072812



Site BP6/7 004 – White-tailed deer across pond photo 20200704\_073224



Site BP6/7 017 – View east, photo 20200704\_073834



Site BP6/7 017 – View west, photo 20200704\_073838

