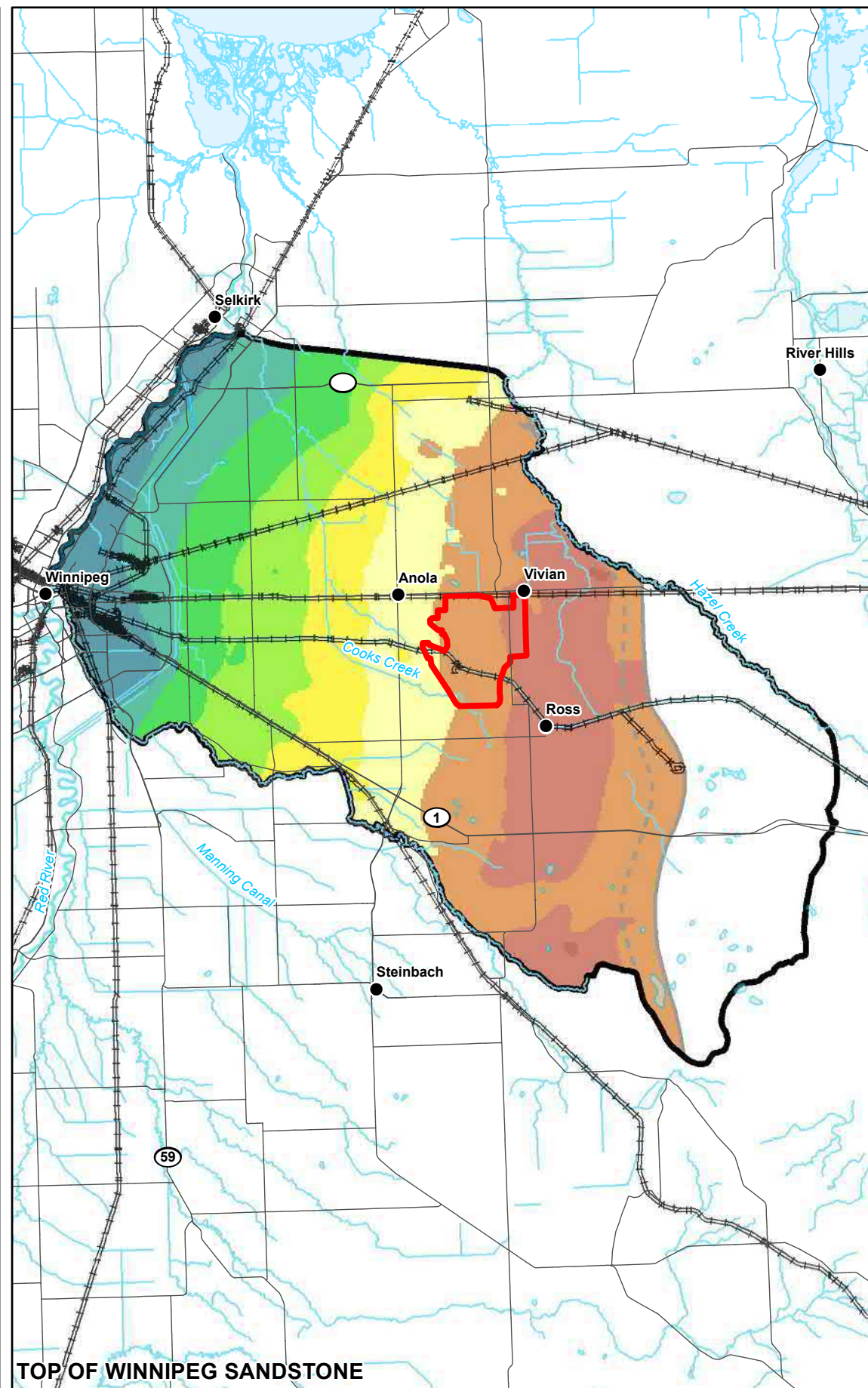
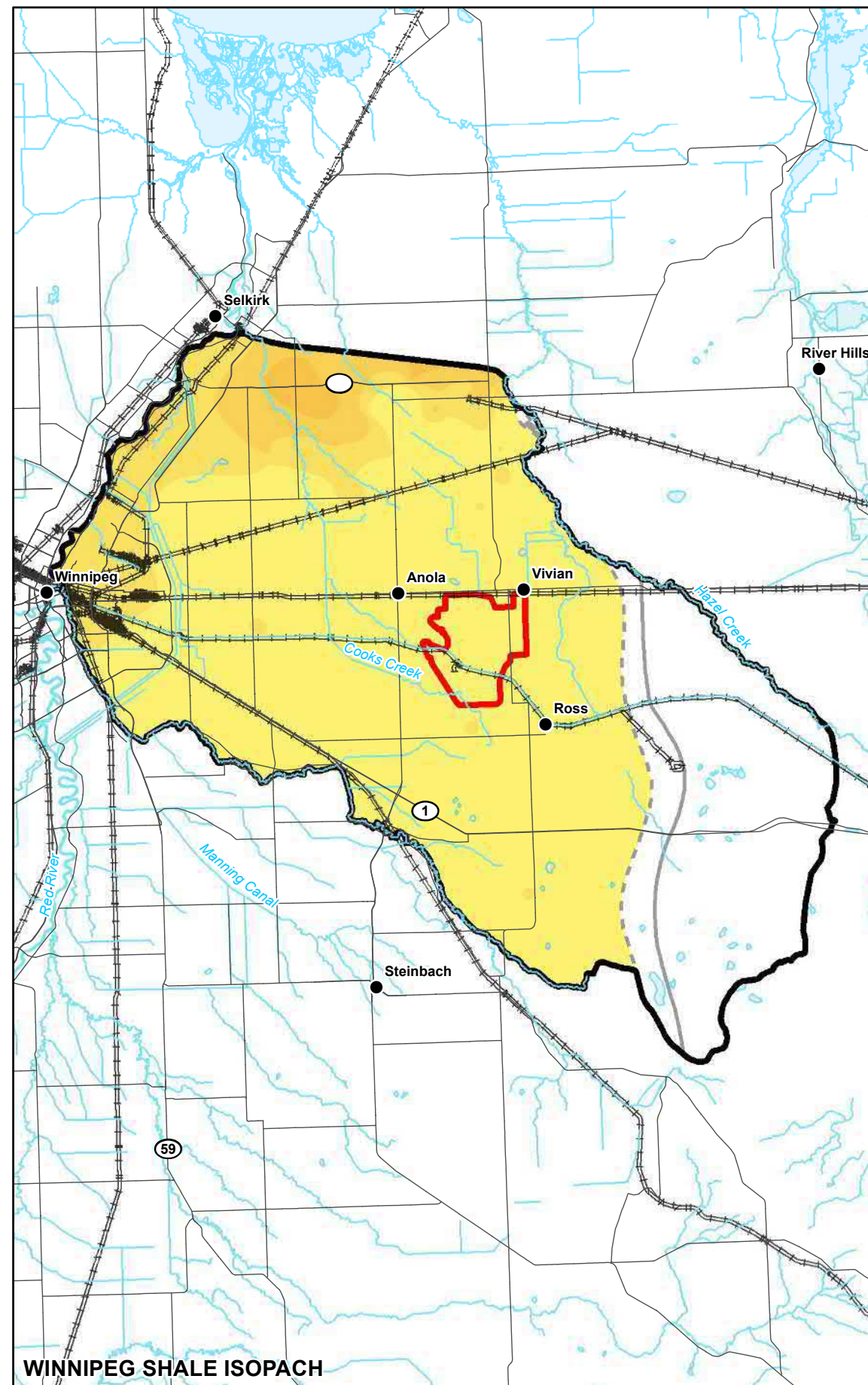


RED RIVER CARBONATE ISOPACH





TOP OF WINNIPEG SHALE



Legend

-  Project Site
 Model Domain

General Features

-  Highway
 Railway
 Watercourse
 Waterbody

Winnipeg Sandstone Subcrop

- Lower Contact
- - - Upper Contact

Winnipeg Shale Isopach (m)

- 0 - 10
10 - 20
20 - 30
30 - 40

Top of Winnipeg Sandstone (masl)

-
- Legend for the number of children in the household:
- 80 - 100
 - 100 - 120
 - 120- 140
 - 140- 160
 - 160 - 180
 - 180 - 200
 - 200 - 220
 - 220 - 240
 - 240 - 260

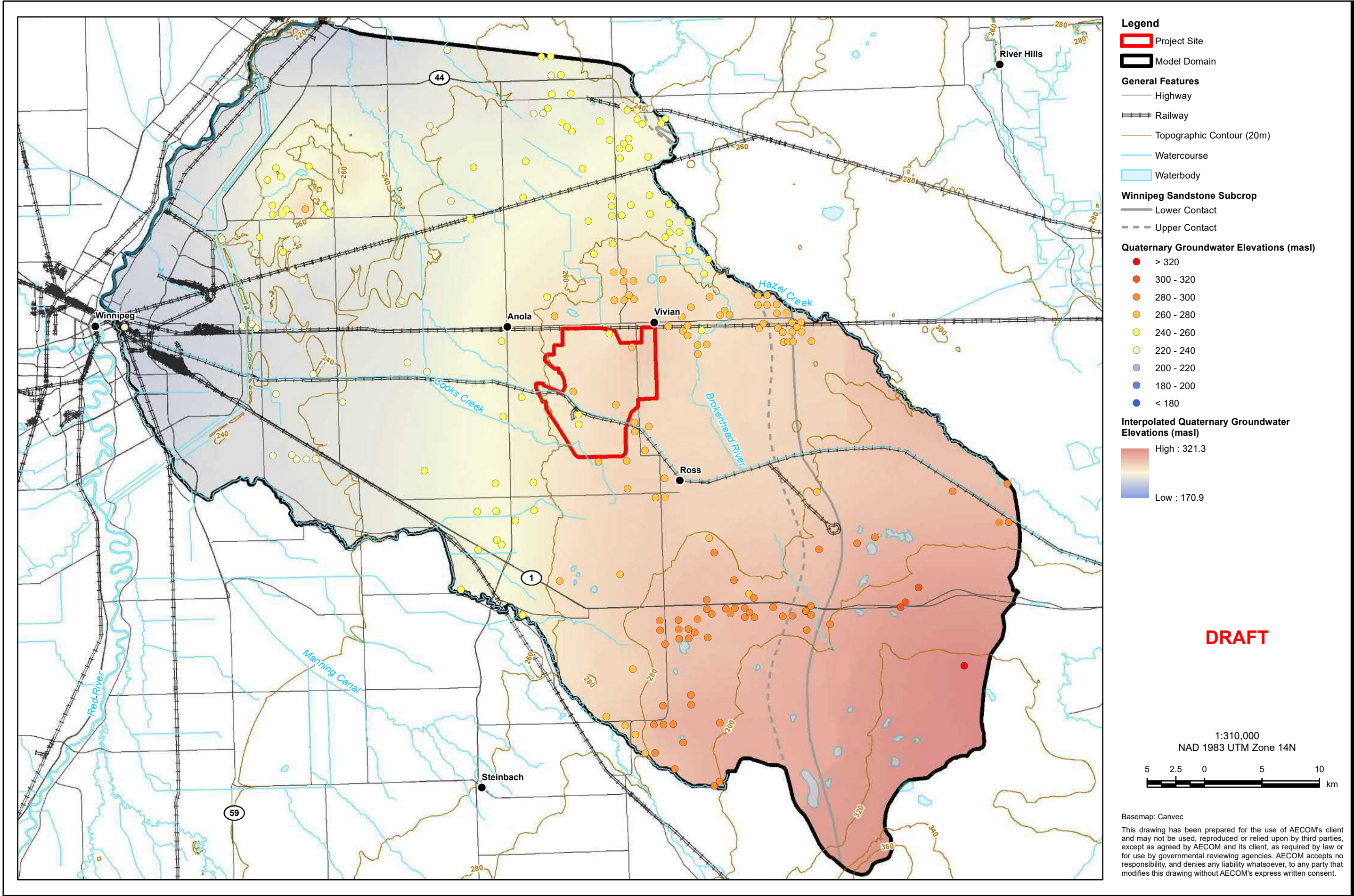
DRAFT

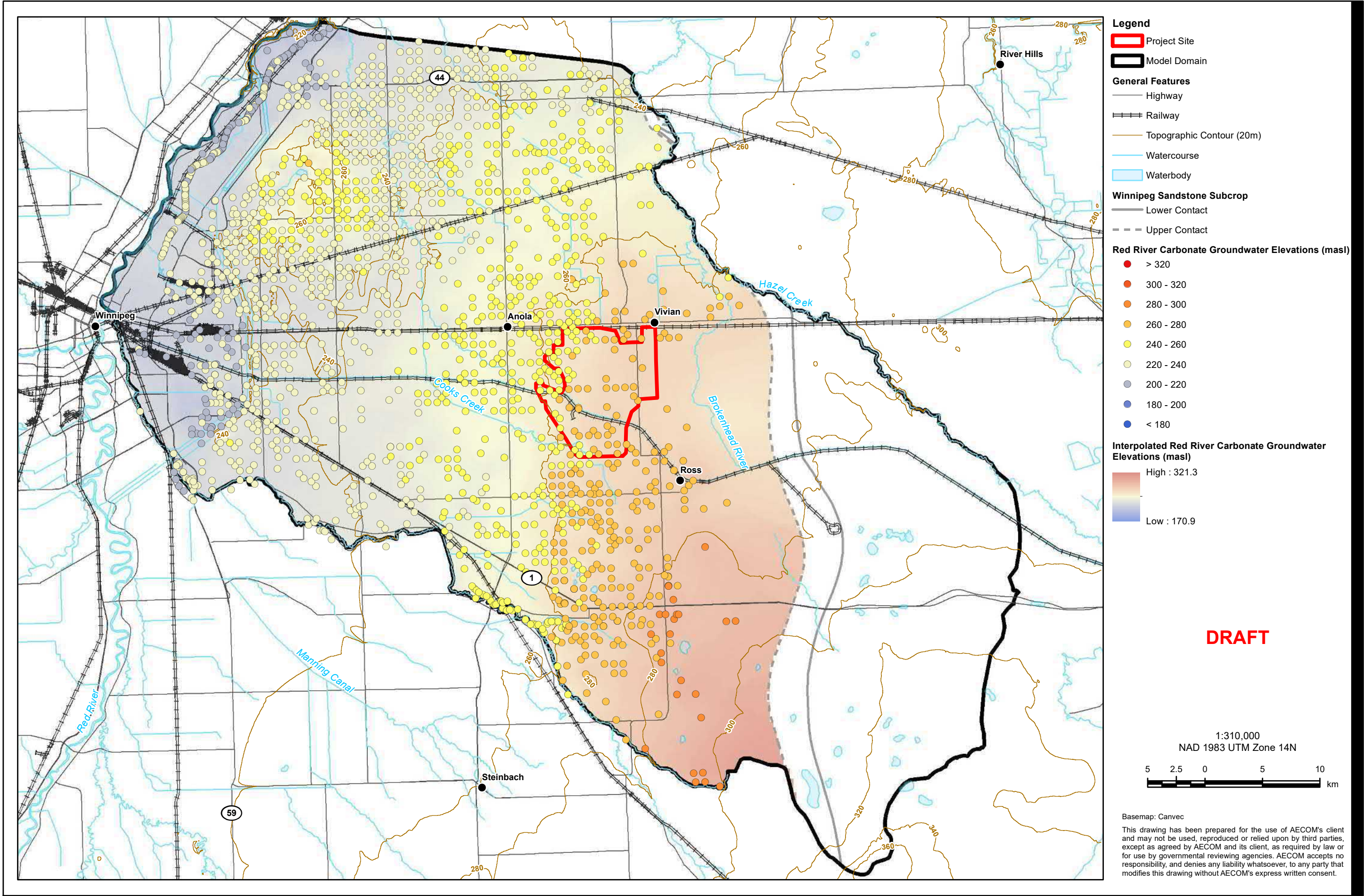
1:580,000
NAD 1983 UTM Zone 14N

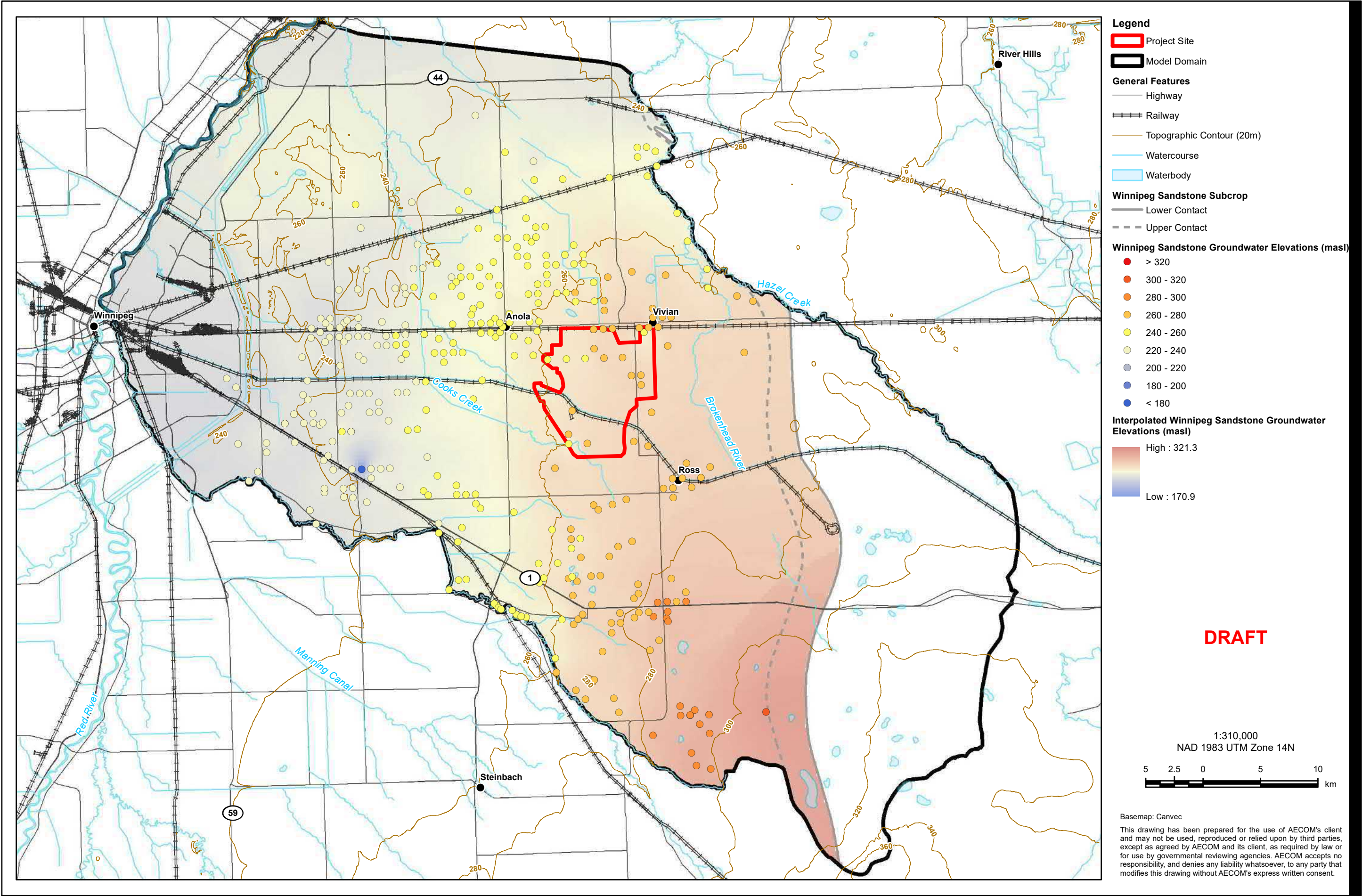


Basemap: Canvec

This drawing has been prepared for the use of AECOM's client and may not be used, reproduced or relied upon by third parties, except as agreed by AECOM and its client, as required by law or for use by governmental reviewing agencies. AECOM accepts no responsibility, and denies any liability whatsoever, to any party that modifies this drawing without AECOM's express written consent.







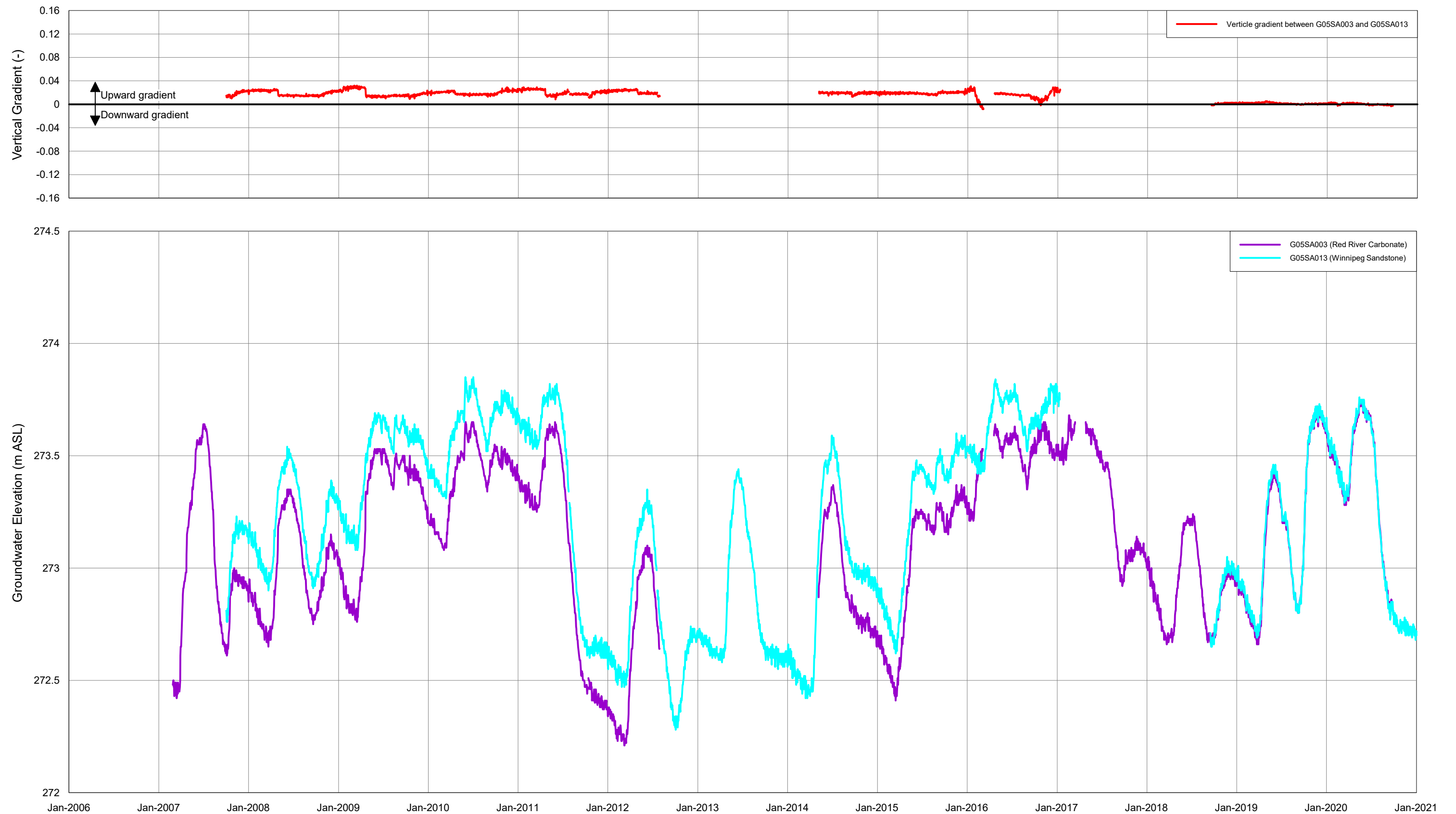


Figure 5-12. Manitoba Observation Well Hydrograph – Wells G05SA003 / G05SA013

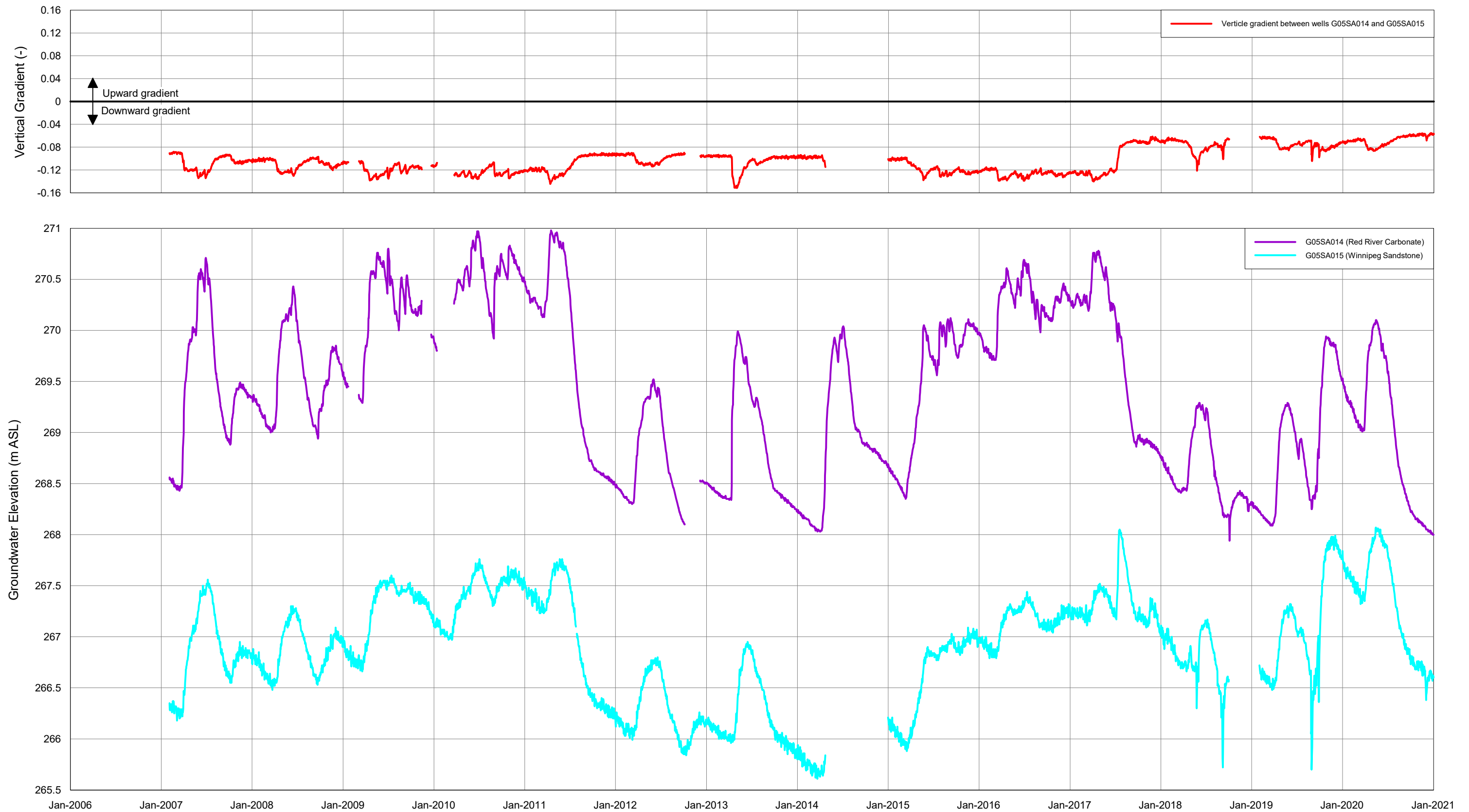


Figure 5-13. Manitoba Observation Well Hydrograph – Wells G05SA014 / G05SA015

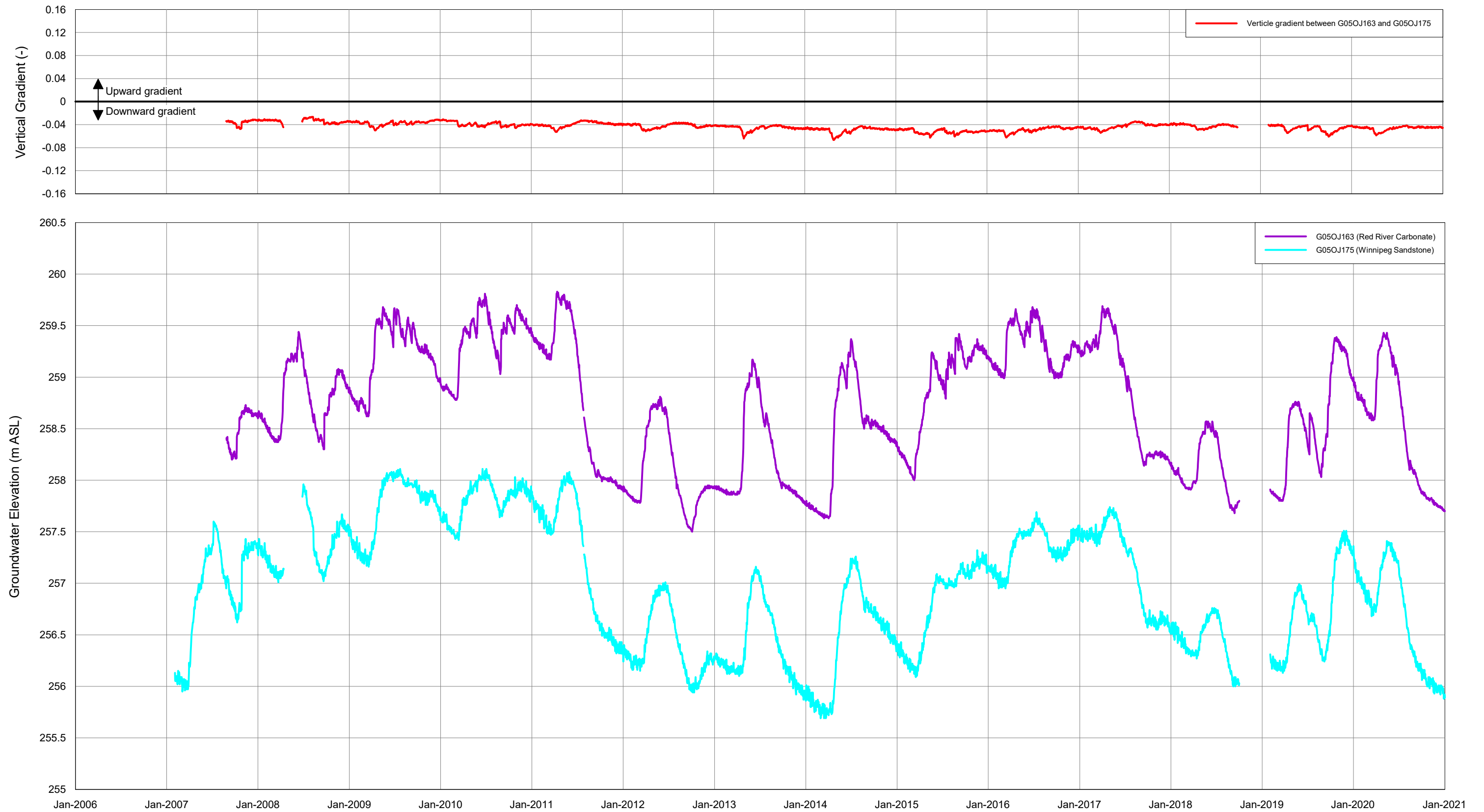
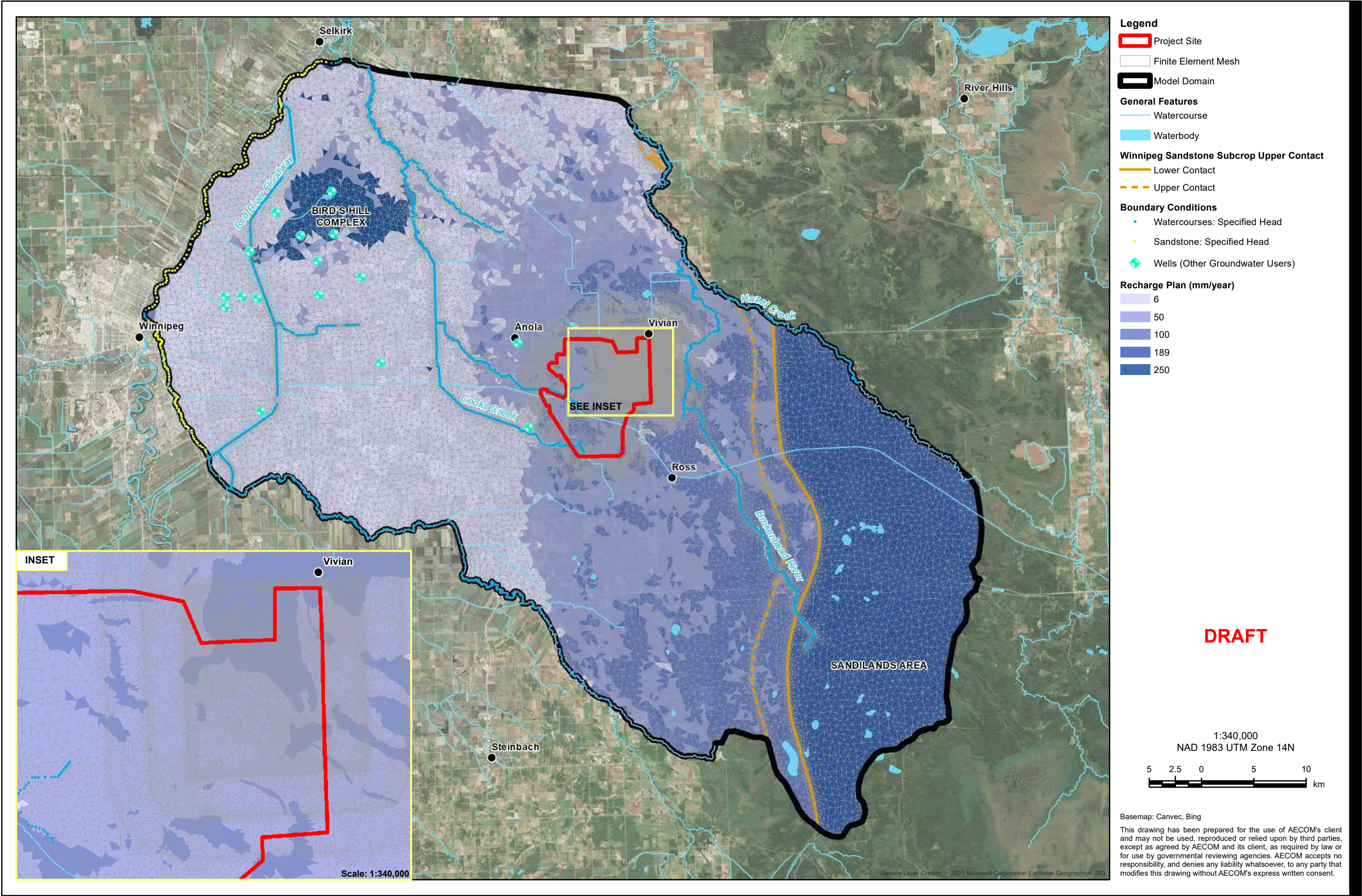
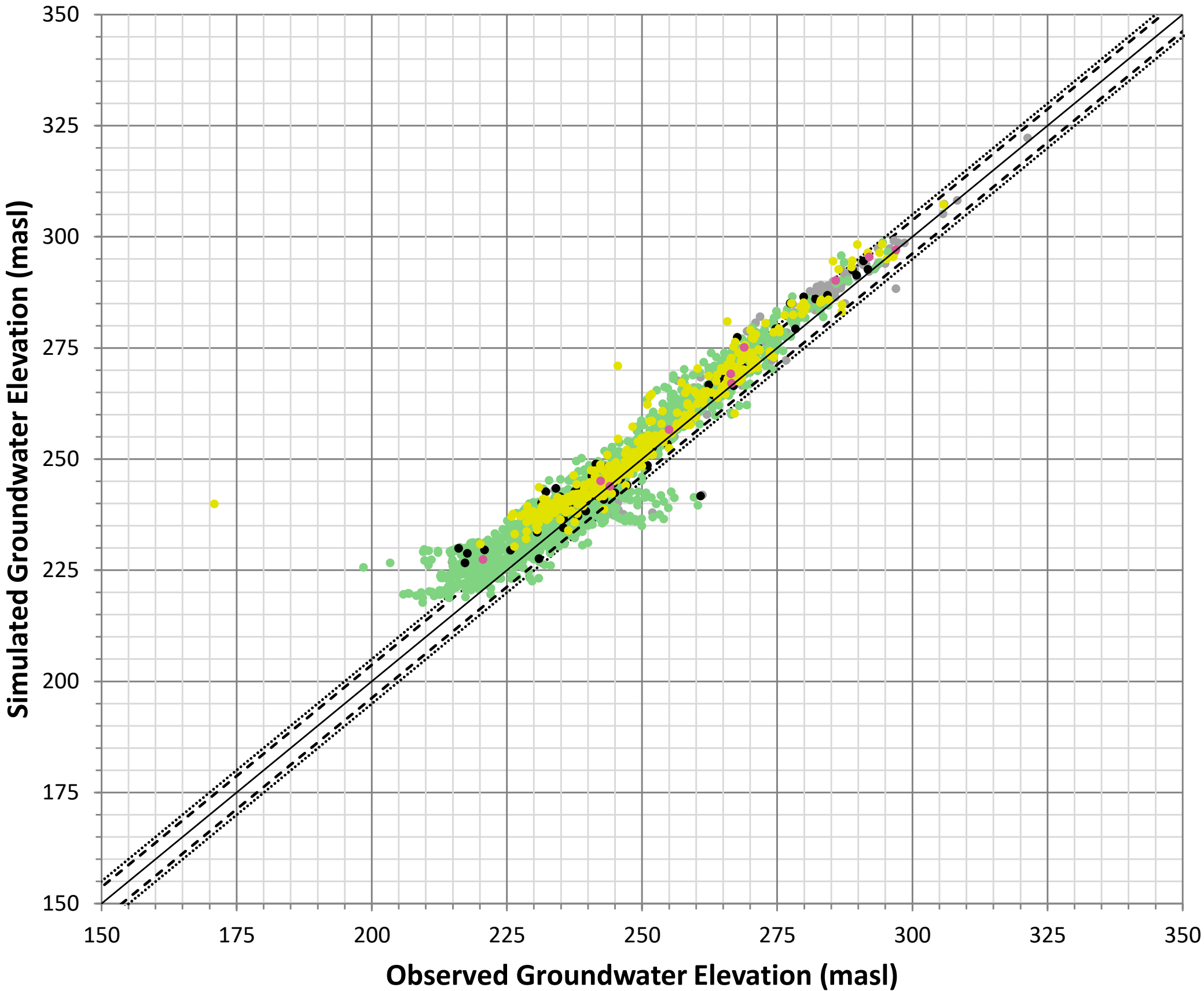


Figure 5-14. Manitoba Observation Well Hydrograph – Wells G050J175 / G050J163





Legend

- Quaternary Sediment
- Red River Carbonate
- Winnipeg Shale
- Winnipeg Sandstone
- Lower Shale / Precambrian Bedrock
- 95% Confidence Interval
- 80% Confidence Interval

CALIBRATION STATISTICS:

- Minimum Residual: -20.76 m
- Maximum Residual: 68.98 m
- Mean Residual: 3.27 m
- Root Mean Square Error (RMSE): 5.46 m
- Normalized Root Mean Square Error (NRMSE): 1.70%
- Correlation Coefficient (r): 0.986

DRAFT

This drawing has been prepared for the use of AECOM's client and may not be used, reproduced or relied upon by third parties, except as agreed by AECOM and its client, as required by law or for use by governmental reviewing agencies. AECOM accepts no responsibility, and denies any liability whatsoever, to any party that modifies this drawing without AECOM's express written consent.

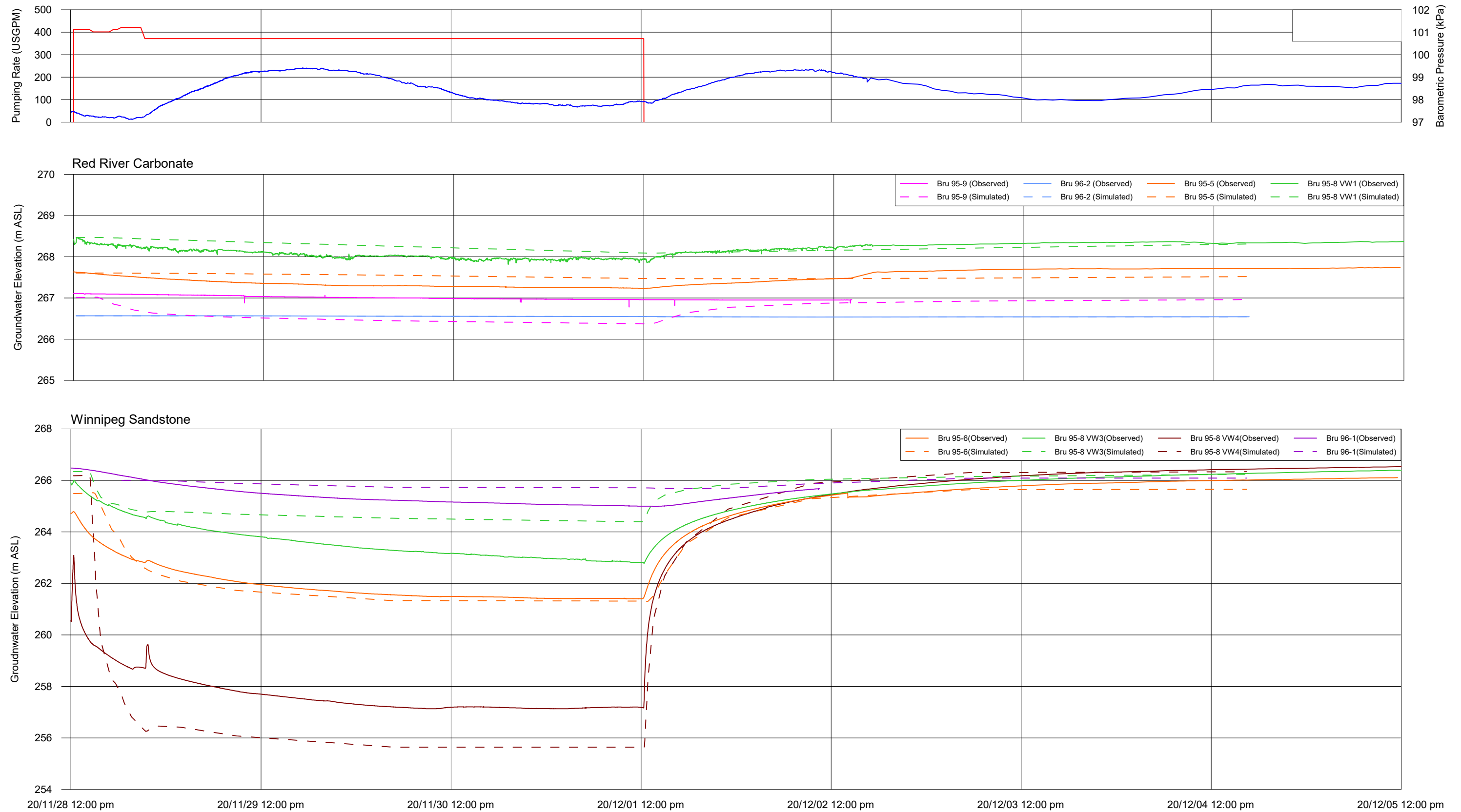
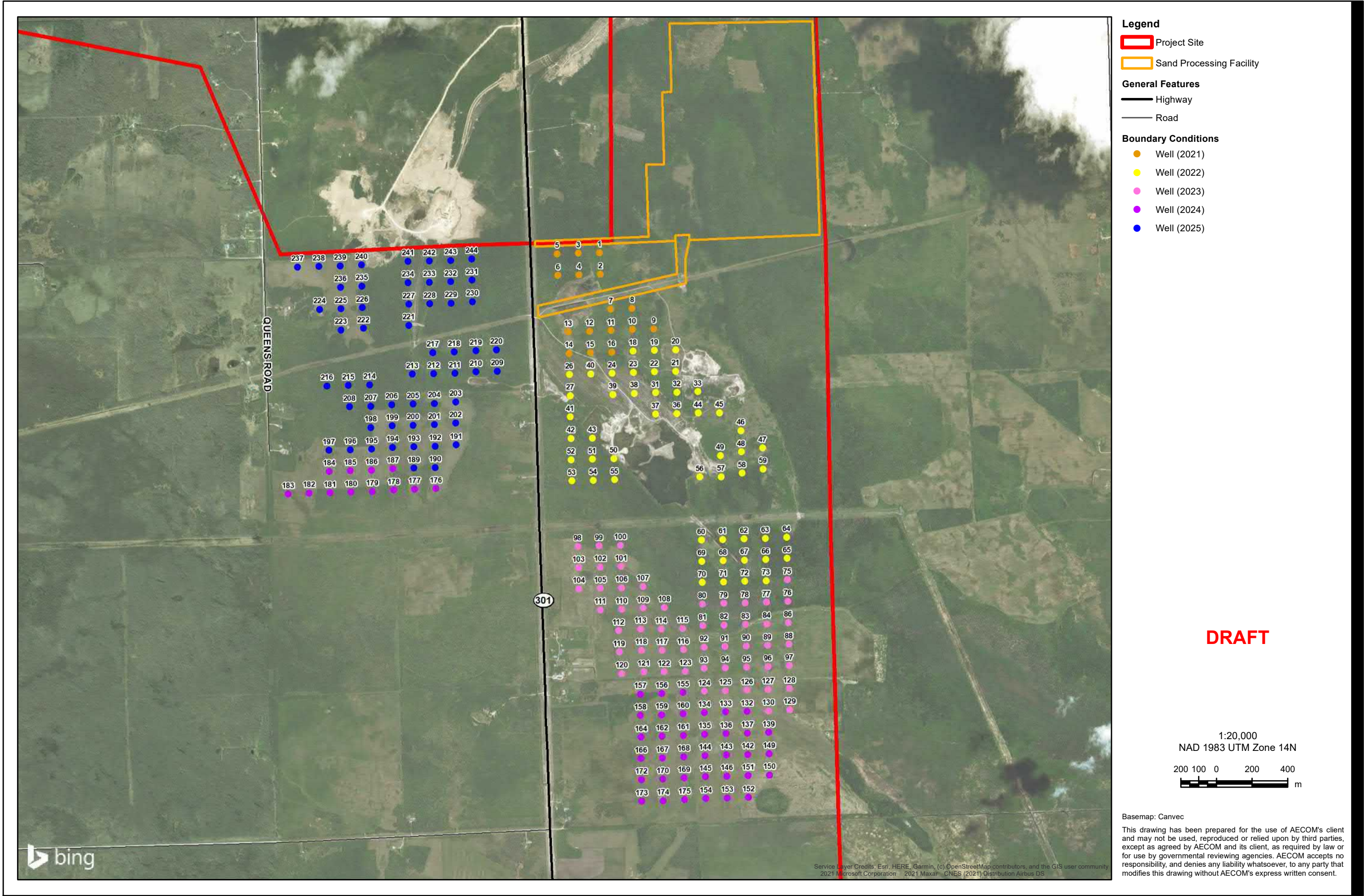
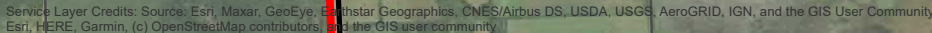


Figure 6-4. Transient Calibration Time Series Plot (Pumping Test)





Project No.: 60640258 Date: April 2021