

Appendix F

**Historic Resources Branch
Communications**

DATE: 2021-03-11

TO: **Marlene Gifford**
Biologist, Environmental Assessor
Impact Assessment & Permitting, Canada
AECOM
99 Commerce Drive
Winnipeg, MB

FROM: **Brittany Romano**
Impact Assessment Archaeologist
Archaeological Assessment Services Unit
Historic Resources Branch
Main Floor – 213 Notre Dame Avenue
Winnipeg, MB R3B 1N3
T: (204) 945-2118
F: (204) 948-2384
e: Brittany.Romano@gov.mb.ca

SUBJECT: **Screening request - CanWhite-Sands-Update**
HRB File AAS-20-16736

Concerns re: 20-10-8 EPM / BRU 83?

Further to your e-mail regarding the above noted heritage screening, the Manitoba Historic Resources Branch (HRB) has examined the location in conjunction with Branch records for areas of potential concern. LiDAR coverage shows the development footprint located in section 20 township 10 range 8, east of the principal meridian (20-10-8 EPM) is located on several elevated landforms that include well-defined ridges, points, and topographic anomalies. Similar elevations in the area have previously heritage resources. These factors, to name a few, suggest that any future planned development within the area has the potential to impact heritage resources; therefore, the Historic Resources Branch has concerns.

Under Section 12(2) of *The Heritage Resources Act*, if there is reason to believe that heritage resources or human remains are known, or thought likely to be present, on lands that are to be developed, then the owner/developer is required to conduct at his/her own expense, a heritage resource impact assessment (HRIA) and mitigation, if necessary, prior to the project's start.

The developer must contract a qualified archaeological consultant to conduct a Heritage Resources Impact assessment (HRIA) of the proposed development location, in order to identify and assess any heritage resources that may be negatively impacted by development. If desirable, the Branch will work with the developer/land owners and its consultant to draw up terms of reference for this project. Attached Figure 1 shows the areas identified for heritage resource impact assessment.

If you have any further questions or comments, please feel free to contact the Branch as above.

Historic Resources Branch
Archaeological Assessment Services Unit

AAS-20-16736
Areas of Concern - Lidar

Archaeological Assessment Services Unit
Historic Resource Branch
Manitoba Sport, Culture, and Heritage

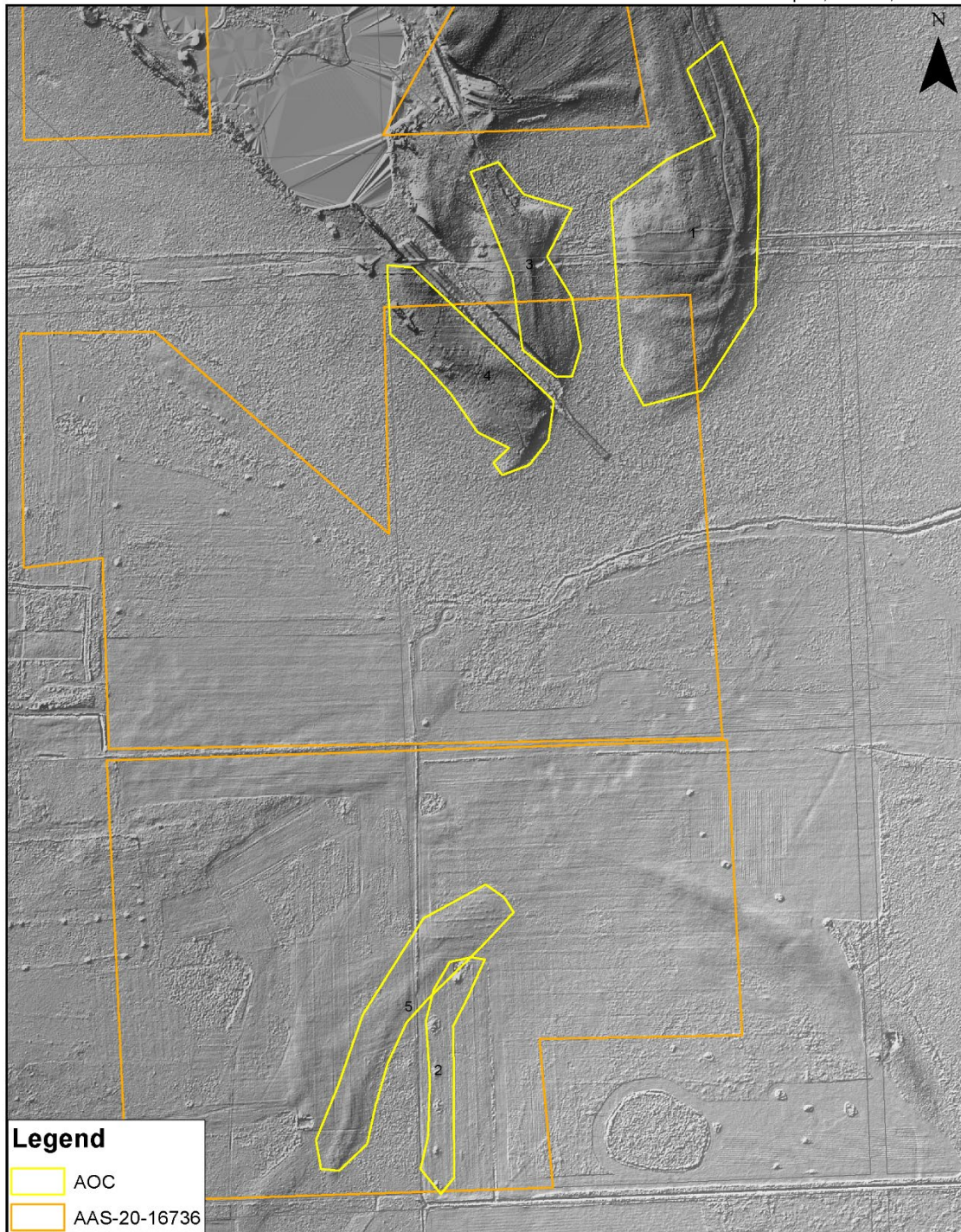


Figure 1 Areas of Concern (AOC)