

**CanWhite Sands – Silica Sand Extraction Project
Environment Act Proposal –
File No. 6119.00
Public Comments Received From**

Don Sullivan

Dear Laura Pyles,
Director of Environmental Approvals Branch

Attached are two documents.

The first document, is What The Frack Manitoba comments document regarding file # 6119.00 CanWhite Sands Corp. Silica Sand Extraction Project.

The second document is a set of evidence-based questions that was prepared and submitted to CanWhite Sands Virtual Open House that was held on August 24,2021.

Both evidence-based documents were prepared by What The Frack Manitoba Science Researcher, Dennis LeNeveu.

Based on both these attached evidence based documents, there is a significant amount of identified deficiencies in CanWhite Sands submitted Environment Act Proposal (EAP) for its silica sand extraction project to warrant you as the Director of Environmental Approval to exercise your powers under Section 11(9) of the Manitoba Environment Act to request that CanWhite Sands file additional information in the form of a full Environmental Impact Statement (EIS) and also warrant's you making a recommendation to the Minister of Conservation and Climate that a Clean Environment Commission panel be struck to review such an Environmental Impact Statement.

We would add that such an Environmental Impact Statement should provide information for the full 24 years that CanWhite Sands has stated they intend to operate and not for just for the first 4 year as is the case with CanWhite Sands current EAP for its silica sand extraction project. Also, several of the mitigation plans identified in CanWhite Sands EAP for its silica sand extraction project, but not included, should also be part of CanWhite Sands Environmental Impact Statement for review by the Clean Environment Commission.

Finally, I have provided a link below petition with over 4,300 signatures calling on the government of Manitoba to undertake an independent review of CanWhite Sands silica sand extraction project by the Clean Environment Commission.

<https://chng.it/4JqkPHJSp4>

Respectfully.

Don Sullivan
What The Frack Manitoba

Comments on the CanWhite Sand Vivian Extraction Project
By
D.M. LeNeveu B.Sc (hons. physics), M.Sc. (biophysics). B.Ed.
On Behalf of What the Frack Manitoba
Oct. 5, 2021

On Aug. 3, 2021 CanWhite Sands submitted two documents to the Manitoba public registry file # 6119.00 to support CanWhite Sands Corporation (CWS) Silica Sand Extraction Project. The documents are an Environment Act Proposal for the Vivian Sand Extraction Project (EAP) and the Vivian Sand Extraction Project – Hydrogeology and Geochemistry Assessment Report (HGR). The authors of the Extraction EAP are Marlene Gifford, M.Sc. P. Bio, Biologist, Environmental Assessor and Clifton Samoiloff, B. Sc. EP(CEA), Mining Market Sector Lead, Canada. These were the same two authors who prepared the EAP for the CWS Vivian Sands Processing Plant for AECOM Ltd. The contributors to the HGR prepared by AECOM Ltd. include Reuben Dandurand, M.Sc., G.I.T. (BC), Stephen Dickin, P.Geo. (MB, BC) Senior Hydrogeologist / Groundwater Modeller, Kun Jia, M.Sc., P.Geo. (BC) Geochemist/Hydrogeologist, Mehrnoush Javadi, M.Sc., Ph.D. Geochemist/Hydrogeologist, Chris Donnelly, M.Sc., P.Geo. (BC, AB), and Ryan Mills, M.Sc., P.Geo. (MB, BC, AB) Senior Groundwater Modeller Senior Hydrogeologist. Omissions, misinformation and inadequacies in the submitted EAP and HGR are documented here.

We prepared a list of questions supported by references for the CWS Virtual Open House of Aug. 24, 2021. The submitted questions document a series of inadequacies and misleading or incorrect information in the Extraction EAP and HGR that require a detailed technical response. The questions were submitted Friday, Aug. 20, 2021, before the CWS Virtual Open House. C. Samoiloff represented AECOM at the open house. C. Samoiloff gave an introductory dissertation about the Professional Engineering guidelines that AECOM was obliged to follow. C. Samoiloff asserted that AECOM is independent and has no stake in the outcome of the licensing process even though AECOM was hired by CWS to represent their interest.

CWS did not specifically address any of the submitted questions in the virtual open house. The questions submitted to the CWS Virtual Open House are attached in a separate questions document. In the chat box during the open house I submitted five written questions that were “*dismissed by the host.*” The chat box was configured such that participants could not see written questions of others. Some oral statements were made by the CWS participants in the virtual open house that seemed to be a partial rebuttal to some of the questions submitted in advance, however no specific advance questions were read out and completely addressed. There is no indication that any proper thorough response will ever be forthcoming to questions submitted before the meeting. The questions may be posted on the public registry along with other public comments. The posting is likely to occur after the Oct. 7, 2021 deadline for public submissions and after responses from the provincial Technical Advisory Committee (TAC) are received. The TAC would not be able to review and respond to the public comments. For the Vivian Sand Processing Project and other projects, the TAC has responded in a siloed fashion, addressing issues only pertaining to their particular narrow jurisdiction. With these procedures the public comments and issues raised will receive no independent qualified technical expert review and response other than from AECOM personnel who are hired to represent the interest of CWS.

The issues raised by the seventeen questions submitted to the open house are summarized and augmented below. The link to an audio recording of the CWS Virtual Open House is;
<https://onedrive.live.com/?authkey=%21AOuLHJK8APROHw&cid=E787770CDC4A49DD&id=E787770CDC4A49DD%21130&parId=root&o=OneUp>

1. Re-injection into the aquifers of excess water from sand extraction

The UV sterilization system specified in the EAP will not be effective in eliminating harmful microbes due to manganese, iron and fine particulate in the water that will scatter UV light. Re-injection to the sandstone of excess aerated water extracted with the sand would carry harmful microbes and oxygen into the aquifer. The oxygen in the re-injected water would react with sulphide in pyrite in the shale aquitard and deeper layers of shale within the sandstone, with marcasite (a form of pyrite) in the sand, with pyritic oolite layers in the sandstone and with pyritic concretions in the sandstone to form acid. The acid formed by oxidation of sulphide would mobilize heavy metals such as arsenic that the HGR report documented in the shale. The geochemistry results of the HGR that reported low or no sulphide in the shale and sand were corrupted because the sand samples and core logs were subject to air and moisture for a long period. These issues are all described with references in question 3 of the attached questions document.

The evidence for ineffective UV radiation given in question 2 of the attached question document is summarized below.

The Government of Australia Department of Health states;¹

“UV light will only travel in a straight line so any shadow or obstruction will reduce its efficiency. Water that is not filtered can contain iron, manganese and other particles that can either absorb or scatter UV light reducing the effectiveness of the disinfection system. Microorganisms that are able to pass through protected by shadows created by dirt, debris or other microorganisms may be able to survive treatment.”

The Water Research Centre of Dallas Texas gives the following conditions for UV sterilization to be Effective.²

1. Five to ten micron pre-filtration of suspended solids
2. iron concentration less than 0.3 mg/L
3. manganese concentration less than 0.05 mg/L
4. colour – none.

The concentration of manganese in the water in the sandstone aquifer given in table 4.3 of the HGR is between 24 and 45 ppm (mg/L). The iron concentration is between 0.22 and 0.65 mg/L. Fine particulate would be suspended in the sand by the CWS airlift silica sand extraction mechanism.

There is no data provided that the UV treated water was tested. CWS did not verify if the UV system works. This evidence demonstrates that the UV radiation would be ineffective. Potentially harmful microbes would be introduced to the aquifer. The re-injected aerated water would provide an environment where the introduced harmful microbes could proliferate contaminating the drinking water. The dissolved organic carbon content of the aquifers reported Table 4-7 of the HGR illustrated that microbes introduced would have nutrients plus oxygen from the aerated water to enable proliferation.

Particularly egregious was exposure of silica sand samples to air. According to the HGR sand was sampled from stockpiles. The sand was extracted by air-lift methods that would have exposed the sand to air during extraction. Well Bru 95-3 was completed on June 28, 2019 according to drilling records obtained from MB Groundwater. The sand stockpiled outside was exposed to air and moisture until the time of sampling in November of 2021. Any marcasite in the stockpiled sand as was reported for Winnipeg formation sand from Wanipigow would have long been leached out.³ Well records obtained from MB groundwater show well Bru 121-1 was completed on Feb. 19, 2019. Well Bru 146 would have been completed at a similar time. Sand

samples from wells Bru-121-1 and Bru 146 would have been exposed to air and weathering since the time of well completion.

Question 3 and Reference 9 gives methods to prevent oxidation of pyrite in core samples in the attached questions document. A further reference by Basu et al. (2000) describes methods to prevent oxidation of shale samples including airtight containers and refrigeration at 4 degrees.⁴ A reference, König et al. (2000) documents the oxidation pyrite in core samples that are exposed to air during storage reporting, “*Massive Fe(II) to Fe(III) oxidation, which involved between 24% and 45% of the initial Fe(II), occurred within only 6 months of refrigerated storage.*”⁵ These references establish that oxidation of pyrite in samples can occur rapidly. Core samples for the shale aquitard and carbonate aquifer were placed in core boxes that were not air tight. The core samples sent to analysis were not in air tight sealed containers and were not kept refrigerated at 4 C. The geochemical results conducted in the HGR would underestimate sulphide concentrations.

Ryan Mills, senior hydrogeologist who helped prepare the HGR admitted at the CWS Virtual Open House the core log samples were exposed to air but stated that the samples were prepared according to standard industry practice. He stated that pyrite oxidation was sufficiently slow, that very little would have oxidized before analysis. This contradicts the evidence by Basu et al. (2000) and Konig et al. (2000) that air oxidizes pyrite in shale or sediment core samples readily. Iron pyrite in quartz or other crystalline ore bodies might oxidize slowly because the crystalline structure prevents ingress of oxygen and moisture. Shale and concretions are porous and would allow air and moisture ingress. A publication by Nolan (2019) states;⁶

“When iron sulphide is exposed to oxygen it reacts rapidly, releasing large amounts of heat. This exothermic reaction can be an ignition source for any oil or gas that is present.”

To keep core logs exposed to air in core boxes is standard practice for preserving a record of the extent of an ore body but is not acceptable for geochemical analysis. According to the HGR two of the three core log samples Bru 121-1 and Bru 146 were held in storage in Steinbach for over a year where they would have been exposed to air. The core log from the site near Vivian, Bru 95-8, extracted on Nov.11, 2020 and analyzed Jan.5, 2021, was not in an air tight container nor maintained at 4C. The samples were sent in low density polyethylene (LDPE) bags that allow air ingress. (See question 3, reference 11 of the attached questions document.)

At the CWS Virtual Open House I had the opportunity to ask one question at the end of the meeting. I asked about the sand sampled from Bru 95-3 that would have been corrupted due to weathering in the outdoor sand stockpile from which the sand sample was taken. The response in part was that the sand in the Vivian area was from the Carman sands that are different from the sand at Wanipigow and would have no marcasite. The name given to the sands is irrelevant. To determine the amount of sulphide in the sand a valid sample must be taken that has been protected from oxidation. Figure 4 of the attached question document provides evidence that the Carman sands are south of the Vivian extraction area.

It is essential that sand and core sampling be redone with many more samples taken over the entire CWS project area. The sand must be protected from air during extraction. Air lift extraction of the sand cannot be used. Sonic drilling methods such as were used at Wanipigow may be required.³ Sand and core samples must immediately be sealed in air tight containers and sent for analysis. The sampling and sealing of the samples must be done by an independent agency or company that has expertise in this area.

Selenium was reported in the geochemistry results of the HGR in the carbonate, shale and sandstone despite the exposure of the samples to air that would oxidize and mobilize the selenium. Shake flask tests and other geochemistry results in the HGR have documented potentially toxic levels of selenium in the carbonate

aquifer, shale aquitard and the sandstone aquifer. The concentration of selenium (Se) and arsenic (As) for Bru 1221-1 in the shale was particularly high at 1.64 mg/L Se and 0.0306 mg/L As. The selenium concentration of 0.002 mg/L in the sandstone aquifer for Bru 121-1 was attributed in the HGR report to shale fragments in the sandstone. The reported selenium and arsenic would be expected to be underestimated due to oxidation of the samples that occurred.

ALS lab results for solid core samples for Bru 121-1 give high values for heavy metals with 30.4 ppm arsenic, 30 ppm barium, 70 ppm boron, and 13.1 ppm selenium in the shale aquitard. The solid core sample results for Bru 95-8 also had elevated heavy metal content with 24.2 ppm arsenic, 30 ppm barium, and 58 ppm chromium in the shale. The XRD results from Table 1 Appendix A Part 6 in the HGR showed pyrite at 1.3 weight percent in the shale aquitard for well Bru 95-8 near Vivian and 0.6 weight percent for well Bru 121-1 even though much of the pyrite would have oxidized from exposure of the samples to air. These results demonstrate heavy metals including selenium and pyrite are present in the shale.

The well log from Bru 95-7 reports shale layers interbedded with sandstone below the pure sand layer at depth below surface between 72.24 to 74.68 meters. This shale could be extracted with the sand. Figure 1, a picture taken in the spring of 2020 of extracted sand piles south of Vivian, shows shale fragments interspersed in the sand. These pictures provide incontrovertible evidence that shale fragments containing pyrite and heavy metals would be extracted with the sand. The net neutralization potential, NNP, in shale for Bru 95-8, Bru 121-1, and Bru 146 shale of, 5.0, 3.0 and 3.0 respectively indicates that the shale is potentially acid generating (PAG). The NNP values likely would have been smaller indicating strong acid leaching potential consistent with literature references had the samples not been exposed to air.^{8,9}



Figure 1. Photo of shale fragments extracted with the sand near Vivian Manitoba, spring 2020. The photo was taken by a local concerned citizen (name withheld for privacy reasons)

Shale extracted with the sand would oxidize sulphide in the extraction processing tanks to form acid and mobilize heavy metals. Selenium in the shale would oxidize to a soluble form and be released as well. Most of the contaminated water from the processing tanks would be re-injected into the sandstone aquifer. Some of the contaminated water would be directed into the slurry lines. Oxidation of the selenium and pyrite in the

small shale fragments carried in the sand would further contaminate the slurry line water. The oxidation of the pyrite and selenium in shale fragments would occur from aerated re-injected water in the sandstone aquifer. The sand grains in the sandstone aquifer may contain marcasite since the geochemical tests for the sand was corrupted due to exposure of the sand samples to air. The oxidation of marcasite would form more acid and mobilize heavy metals and selenium.

A paper by Schrieber and Riciputi (2005) identifies concretions formed in the Winnipeg sandstone as containing pyrite and marcasite.⁷ The HGR describes screening out of concretions from the sandstone after extraction of the sand. Oolite nodules described as pyritic by Watson (1985) have been observed in extracted sand piles at Vivian.⁸ These concretions and oolite nodules in the sandstone aquifer would be another source of contamination when exposed to aerated re-injected water. The concretions and oolite nodules have not been analyzed for the presence of sulphide, selenium and other heavy metals. The failure to analyze critical components of the sandstone aquifer system that could be subject to oxidation by re-injected aerated water is another egregious example of negligence and omission by CWS.

The HGR reports mixing of the carbonate and sandstone water would occur due to degradation of the shale aquitard caused by the extraction activities. Mixing of aquifer water is prohibited by the regulations of the Manitoba Groundwater and Water Well Act.¹¹ CWS has not acknowledged violation of Manitoba Groundwater regulations would occur. An attempt was made to justify mixing of aquifer waters through geochemical studies that demonstrate that changes to well water quality will be benign. CWS is in no position to override regulations made to prevent deterioration in water quality from mixing of aquifer waters based on geochemical predictions. The unavoidable violation of Manitoba Groundwater and Water Well Act with respect to mixing of aquifer waters should result in termination of the project.

The aerated re-injected water would enter the carbonate aquifer where selenium has been detected at levels that produced toxic concentrations in shale flask tests documented in the HGR. The aerated re-injected water would oxidize and mobilize selenium in the carbonate aquifer. Contaminated water from the sandstone could enter the carbonate aquifer from the mixing. The release of selenium in soluble form directly by oxidation does not depend on formation of acid from oxidation of sulphide.¹⁰

Groundwater moves relatively quickly in the carbonate aquifer eventually discharging into the Red River, a major fish-bearing water body. The contaminants including selenium introduced and formed in the aquifer by the re-injected aerated water would eventually discharge into the Red River. Selenium is toxic to aquatic organisms above two parts per billion.¹² All the water wells along the flow path would be contaminated.

Rebuttal remarks in the CWS Virtual Open House by CWS personnel that the sandstone and carbonate aquifers already have oxygen are not credible. A paper by Phipps et al. (2008) reported, over a large area of the Winnipeg formation in eastern Manitoba including the Vivian area, that no dissolved oxygen (D.O.) was detected in the carbonate and sandstone aquifers for most samples.¹³ In particular Phipps's paper reported:

Carbonate aquifer:

*"Measured pH ranges from 7.0 to 8.1, with a median value of 7.5. Redox and D.O. were measured in 17 sites. The D.O. ranges from 0.03 (oxygen is absent) to 1.14 mgL-1. Only one sample has greater than 1 mgL-1, **whereas the remaining samples are almost completely depleted of oxygen**, containing less than 0.20 mgL-1. Eh ranges from -223 to 244 mV."*

Sandstone aquifer:

*"pH varies from 7.2 to 8.2 (median = 7.6). Only one sample, located near the erosional margin, had D.O. concentration > 1 mgL-1 and three other samples had low concentrations >0.1 mgL-1, **however, the***

remainder had concentrations of 0.06 and lower (effectively 0 mgL-1 D.O.)). (n=18) The Eh ranges from -30 to +181 mV. "

Dissolved oxygen levels are reported in table 4.7 of the HGR for several Bru 95 wells in the carbonate, shale and sandstone ranging from 0.2 to 7 mg/L. These results are high compared to the results from Phipps et al. (2008). The results from Phipps et al. (2008) were over a much broader region and should be considered to be more representative of the generally very low dissolved oxygen concentrations that would be found throughout the Bru area.

The HGR states;

"the Winnipeg Shale is extensively weathered to clay and shows a strong blue color in the bottom half of its thickness at some locations suggesting limited access to oxygen."

The blue shale colour confirms lack of oxygen can occur in the shale aquitard layer.

Dissolved oxygen generally decreases with decreasing oxidation reduction potential (ORP or Eh). For example US Environmental Protection Agency (EPA) report EPA/600/s2-86/042 of June 1986 for an aquifer in Cuba documented that dissolved oxygen concentration is zero below an ORP of 100 mV as shown in Figure 2.¹⁴

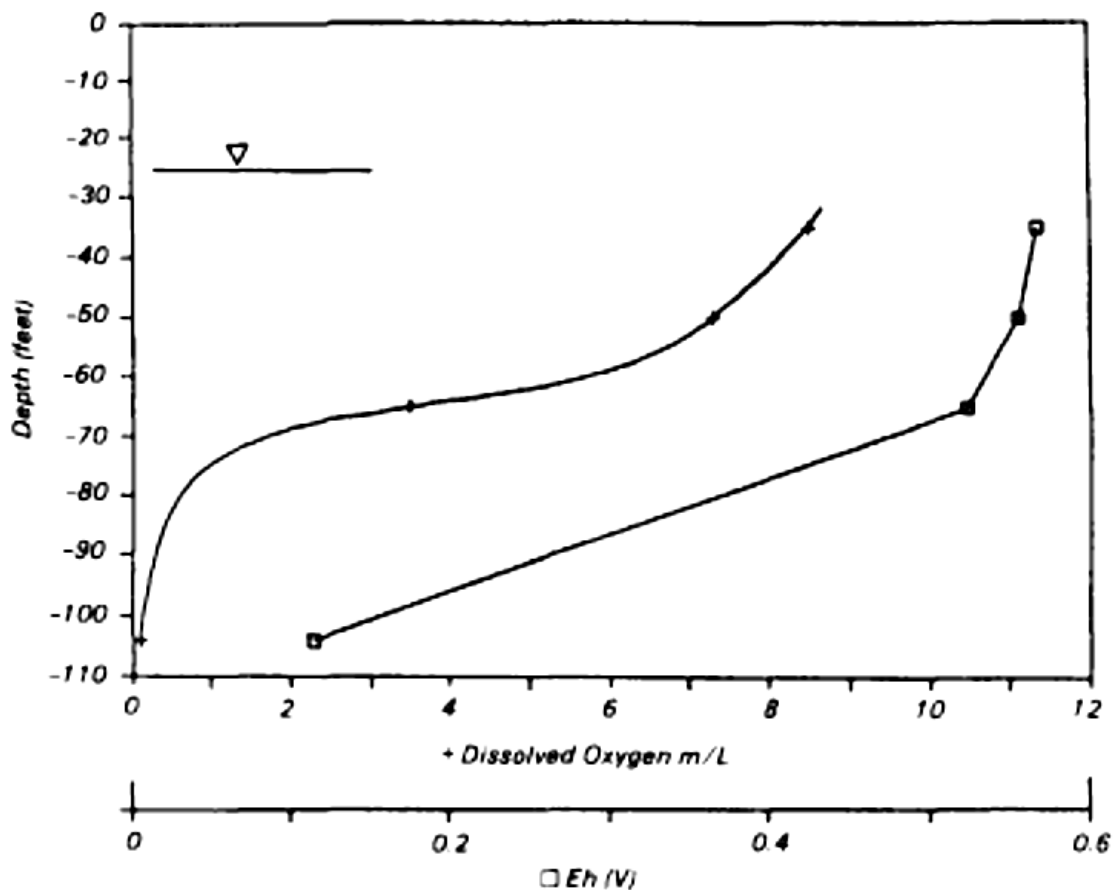


Figure 2. Concentration of dissolved oxygen and Eh (ORP) values in groundwaters of Havana lowlands aquifer, 1985. (EPA, 1986)¹⁴

B. Bullen in the Virtual Open House referred to an article written by Tom Lewis, the president of the Manitoba Prospectors Development Association, to the MB Winnipeg Free Press on Sept. 23, 2020 that stated;

“If the groundwater is toxic, it is unlikely to be a good aquifer.”

In the article the silica sand mining at Beausejour was in the early 1900s was referred to as a benign endeavour.¹⁵ Pyrite would have been oxidized long ago for a surface deposit such as at Beausejour. The carbonate and sandstone aquifers have been shown to have virtually no oxygen content by Phipps et al. (2008). The sandstone and carbonate aquifers are not currently toxic but could become so by re-injected of aerated water that would oxidize known pyrite sources and selenium.

Table 4-7 of the HGR reports significant dissolved oxygen (D.O.) concentrations at negative ORP. For instance the sandstone sample for well Bru 95-7 post test gives a D.O. of 9.09 mg/L for an ORP of -49.1 mV and pretest values for D.O. of 5.60 mg/L for an ORP of -31.3. The reported D.O. and ORP results from Table 4-7 are inconsistent and should not be considered to be accurate.

The biological oxidation demand, BOD, is the amount of the initial dissolved oxygen D.O. that can be consumed by biological organisms and the chemical oxygen demand, COD, the amount of initial dissolved oxygen that can be consumed by chemical reaction.¹⁶ The BOD + COD cannot be greater than the initial D.O. For the groundwater samples Bru 95-7 post test for sandstone, Bru 95-9 pretest for shale and Bru 95-9 for shale the BOD + COD is greater than the D.O. suggesting corruption or contamination of the groundwater samples as shown in Table 1.

Table 1. D.O., COD and BOD groundwater results from Table 4-7 of the HGR

Sample name	D.O. mg/L	COD mg/L	BOD mg/L
Bru 95-7 post test sandstone	9.09	<20	11.3
Bru 95-9 pretest shale	0.21	38	<0.6
Bru 95-9 shale	0.28	40	9.3

The HGR states;

“One water well (Bru 95-7) was drilled and installed by Friesen using a truck mounted dual rotary drill rig. The water well was developed by Friesen using both airlift and cable tool methods. Airlift development was conducted on November 24, 2020 for approximately six hours. On November 26 and 27, the well was developed using the cable tool method for a further six hours. The cable tool method involves repetitively plunging equipment downhole to agitate and suspend the sediments so they can be removed from the well.”

The airlift completion would have introduced oxygen into the well. Cable plunging could have mixed water from different formations and introduced more oxygen.

The HGR states;

"Each borehole was completed as a monitoring well, with one (Bru 96-2) completed in the Red River Carbonate aquifer, one (Bru 95-9) completed in the Winnipeg Shale aquitard and two (Bru 95-6 and Bru 96-1) completed in the Winnipeg Sandstone aquifer.

Only one monitoring well (Bru 96-2) was installed in the Red River Carbonate aquifer. The monitoring well was completed as an open hole monitoring well (i.e. without a well screen) in the carbonate unit by drilling to the target depth and removing the drill rods. Due to the competent nature of the carbonate unit, borehole collapse is unlikely. Therefore, installation of a screen and backfill material was not required.

Two monitoring wells were installed in the Winnipeg Sandstone aquifer (Bru 95-6 and Bru 96-1) and one monitoring well was installed in the Winnipeg Shale aquitard (Bru 95-9). The monitoring wells were completed by using 51 mm (two inch) diameter, flush threaded, schedule 40 PVC standpipe with a 51 mm diameter 0.010" slotted PVC well screen. The annulus of each borehole was backfilled with silica sand around the well screen to form a sand filter pack. Well screens and filter packs were situated entirely within a singular hydrostratigraphic unit to avoid interconnection of hydrostratigraphic units. The remainder of each borehole was backfilled using a bentonite-cement grout mixed according to the Mikkelsen and Green (2003) method."

Water samples were taken from the different formations through these monitoring wells where filter packs were introduced. The filter pack installation could have introduced more air and organics. The monitoring wells are close to the pumping well Bru 95-7 where air completion was used. Introduced air from Bru 95-7 could have migrated to the monitoring wells contaminating the groundwater samples.

The HGR states with respect to the sampling procedure for groundwater from water well Bru 95-7;

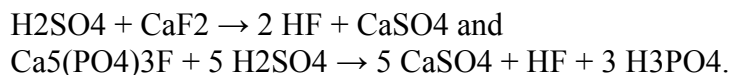
"Groundwater samples were collected from the water well after it was developed using the pumping test equipment by opening a gate valve at the well head. One sample was collected immediately after the 72-hour pumping test commenced, a second sample was collected during pumping, and the final sample was collected immediately before the pumping test ended."

Sampling through a gate valve at the well head for the water well with no mention of closed sampling system with specialized tubing does not demonstrate that proper precautions were taken to prevent sample contamination.

Table 4-7 of the HGR shows elevated concentrations of fluoride in all groundwater samples. The HGR states;

"Fluoride concentrations in all water samples were marginally above FIGQG Agricultural of 0.12 mg/L but below the applicable drinking water guidelines."

Dissolution of fluorite (CaF_2) and/or fluorapatite (FAP) $[\text{Ca}_5(\text{PO}_4)_3\text{F}]$, is thought to be the dominant mechanism responsible for groundwater fluoride (F^-) contamination.¹⁷ Sulphuric acid formation from the oxidation of sulphide in the sandstone, shale, concretions and oolite could release more fluoride into the water by the following reactions;



The HGR has failed to consider and assess the potential source of groundwater contamination from fluoride mobilized by acid dissolution of fluoride containing minerals such as fluorite and fluorapatite.

The HGR states;

"Uranium: One out of three samples (Sample Bru 121-1_36.57 - 37.00) exceeded screening criteria."

The concentration of radium, one of the daughters of uranium decay, was not measured. It is well known that high levels of radium can be found in shale. This has been a particular problem in wastes from the Bakken oil production that are so high in radium as to be designated as radioactive waste.¹⁸ Both radium and uranium could be released into the aquifer water by acid formed by oxidation of sulphide in the sandstone aquifer by the re-injected aerated water. Radon gas from the decay of uranium, thorium and radium can contaminate well water.¹⁹ The radon gas levels in groundwater samples were not measured.

Real world evidence for heavy metal contamination of underground mined cavities due to acid formed by oxidation of sulphide from introduced water with dissolved oxygen is found in South Africa. In an abandoned gold mine in South Africa, surface waters with dissolved oxygen migrated into underground abandoned cavities from gold mining. The dissolved oxygen reacted with sulphide in the formation around the cavities to form acid. The acid leached heavy metals into the groundwater in the cavities. The heavy metal contamination migrated to the surface polluting surface water bodies. AECOM was hired to build a processing plant to remove heavy metals from the contaminated water.²⁰ This demonstrates AECOM has experience with heavy metal contamination of underground mined cavities caused by dissolved oxygen reacting with sulphide bearing formations and should have applied this experience to the Vivian projects.

The geochemical sampling of sand and drill cores was corrupted by exposure to air. Likely sources of sulphide within the sandstone aquifer such as concretions, oolite and interbedded shale layers below the shale aquitard were not sampled and analyzed. The evidence that re-injection of aerated water could oxidize sulphide sources in the sandstone to form acid and oxidize selenium to a soluble form is compelling. The acid formed would mobilize heavy metals and fluoride poisoning both aquifers due the mixing of aquifer waters that would occur from the extraction activities. The ineffectiveness of the proposed UV radiation would lead to microbial contamination of the aquifers. The HGR and EAP have inadequately quantified and dealt with the potential detriment from re-injection of aerated water to the sandstone aquifer.

2. Slurry Line Leakage

A spill from the CWS slurry lines that would carry selenium, fluoride, arsenic, other toxic heavy metals, and harmful microbes could drain into fish-bearing water bodies such as the Brokenhead River and Cook's Creek. The slurry line would be expected to carry the extremely toxic acrylamide monomer from the clarifier tank.²² The contaminants would be ever increasing in the slurry lines as water is recycled and fresh extracted sand and flocculent is added to the slurry line and the recycled water loop.²³

The federal guideline limit for selenium in water for aquatic organisms is very small, two micrograms per litre.¹² Mitigation measures for potential selenium and other contaminant leakage into the environment have not been adequately addressed. A precedent has been set with the Grassy Mountain Coal Project²⁴ where the project was denied by a joint IAAC and provincial review in part because of potential selenium release to the environment.

The potential for spill from the slurry lines affecting fish is acknowledged in the Extraction EAP which states;

“Accidental releases, depending on the type and quantity of substances released, have the potential to affect air, surface water, groundwater and soils, with consequential effects on vegetation, aquatic resources and possibly human health and safety.”

In the CWS Virtual Open House mitigation of spill risk was mentioned by CWS personnel who stated that pressure transducers would be installed in the lines that would automatically shut down the slurry lines in the event of a leak. No such automated system is documented in the EAP. No plans or engineering drawings have been provided for such a system. Even if an automated shut down system were installed, pressure transducers would not detect small continuous leaks that may over time release more contaminated water to the environment than a single large slurry line break. The slurry lines are subject to erosion by the sand particles and many other sources of potential leakage as documented in the attached questions (question 9, reference 20).

The EAP never assessed the potential for ongoing small leaks from the six inch feeder slurry lines when they would be emptied into vacuum trucks and moved every five to seven days. The EAP does not reveal if the slurry lines are rigid or flexible, how the lines would be decoupled, and what equipment would be used for movement to prevent spillage of residual slurry and contaminated water in the lines. Considering there would be about 455 wells drilled per year at full production each requiring slurry line movement, the potential for spillage during emptying and movement is significant. CWS has been negligent in its cursory and inadequate treatment of the issue of potential slurry line leakage.

3. Sinkholes and Subsidence

A geotechnical analysis was not submitted for the CWS Extraction Project. The extraction EAP states;

“Geotechnical aspects of this project are outside the scope of this assessment but have been completed by others... The resource was characterized, and the economics of the project were assessed by Stantec (2019). This involved a geotechnical assessment to inform project design...The pattern of extraction cones is planned to extend laterally by successively extracting from new boreholes across the extraction area in a “room and pillar” style in accordance with the geotechnical model.”

The geotechnical assessment and geotechnical model by Stantec was not produced. CWS is negligent in not providing an essential detailed geotechnical analysis for the extraction project. This omission is so serious as to constitute professional malfeasance.

In attempt to limit liability for the grievous omission of geotechnical analysis the EAP preamble states;

“In the case of subsurface, environmental or geotechnical conditions, may be based on limited testing and on the assumption that such conditions are uniform and not variable either geographically or over time. AECOM shall be entitled to rely upon the accuracy and completeness of information that was provided to it and has no obligation to update such information. AECOM accepts no responsibility for any events or circumstances that may have occurred since the date on which the Report was prepared and, in the case of subsurface, environmental or geotechnical conditions, is not responsible for any variability in such conditions, geographically or over time.”

Failure to consider variability in geotechnical conditions geographically or over time is absurd. The project covers a very large area where geographical variability occurs. The extraction of sand would form cavities that would affect geotechnical conditions over time. For instance subsidence is known to occur gradually over time.²⁷ Failure to consider the inherent geographical variation throughout the project and development of geotechnical occurrences over time caused by the project activities is fundamentally negligent.

The Extraction EAP recognizes that subsidence of the extraction holes with design diameter of 54 meters (figure 2-3 of the EAP) may be a problem. The EAP states;

“Results of a geotechnical assessment based on preliminary exploratory drilling associated with this Project from 2017 to 2021 indicated that the overlying carbonate (limestone) geological layer needs to be at least 15 m thick to minimize the possibility of surface subsidence during sand extraction activities (Stantec, 2019; 2020; 2021).”

A peer reviewed paper by Waltham and P. Fookes specifies that minimum stability thickness for limestone above a cavity must be 70% of the cavity opening dimension excluding overburden cover.²¹ For the CWS standard design opening for a seven well extraction cluster of 54 meters the limestone thickness must be at least 37.8 m.

Cover collapse sinkholes would occur in the approximately 65 well clusters drilled per year as documented in question 1 of the document submitted for the CWS Virtual Open House. CWS personnel at the open house claimed that literature reports specifying a stable thickness of the limestone larger than 37.8 meters does not apply in the Bru area where the limestone is very strong. The Stantec reports referred to in the HGR specifying a minimum thickness for the limestone of 15 meter thickness have not been produced. The Stantec limit is therefore unverified.

The core log for Bru 95-8 in the HGR report gives the limestone from 32.3 to 35.3 meter depth below surface to be weathered and incompetent. Thus there are 3 meters of incompetent limestone documented. This is followed by 1.6 meters of competent limestone to a depth of 36.9 meters. Next are 1.5 meters of limestone with small vugs which are small cavities. Limestone with vugs would not be competent. Next is a clay rich layer of 1.5 meters to a depth of 39.9 meters, followed by a 1.5 meters limestone with horizontal fractures to a depth of 41.4 meters. The clay layer and the limestone layer with horizontal fractures would not be competent. A final limestone layer 4.6 meters thick to 46 meters depth is reported with no comment as to integrity. In the column of limestone for Bru 95-8 there are at most only 6.2 meters of competent limestone out of the 13.7 meters. The Bru 95-8 core log is hard evidence supplied by CWS itself that the limestone in the Bru area is not competent or strong.

The full depth of the limestone for well Bru 95-8 at 13.7 meters is less than the Stantec limit of 15 meters. Figure 1 of the questions document illustrates that none of 37 drill reports give limestone thickness in the Bru area over 37.8 meters. In the eastern area where extraction would begin, most limestone thicknesses are less than the unverified Stantec limit of 15 meters. The figure of limestone thickness from the questions document is repeated here as figure 3.

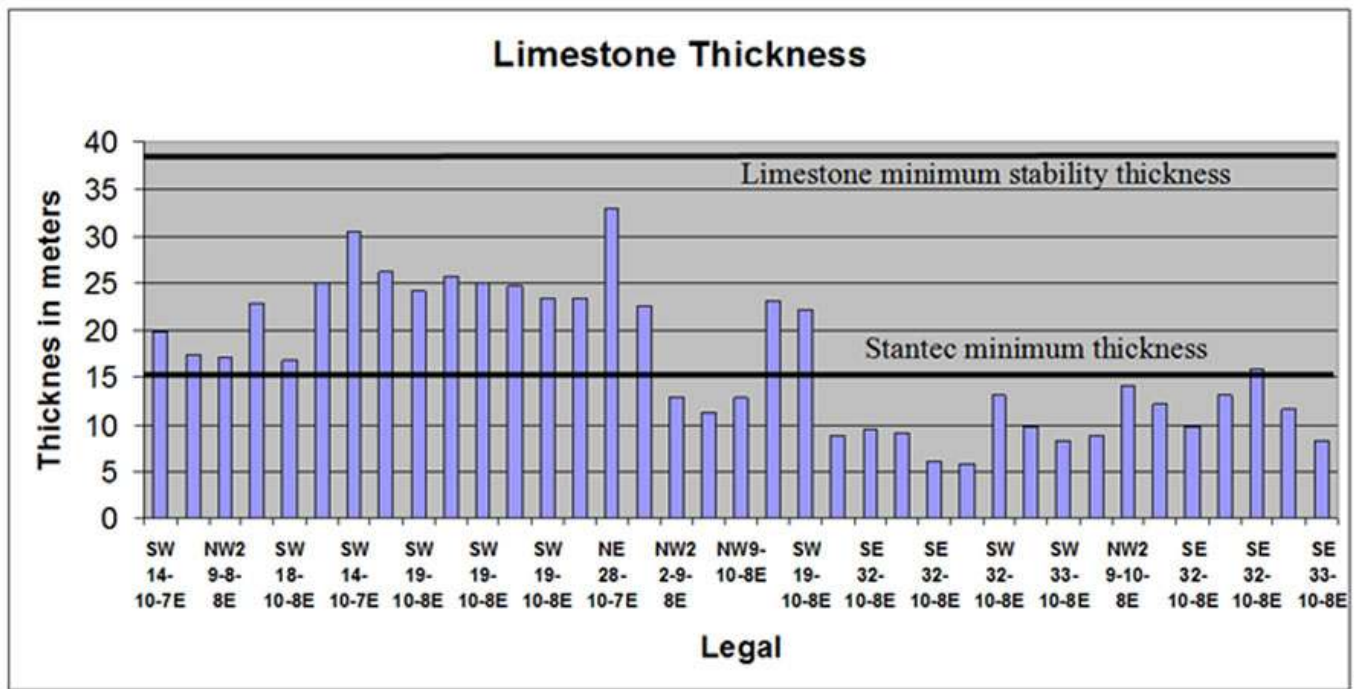


Figure 3. Limestone thickness in the CWS project area taken from drilling reports supplied by Manitoba Groundwater for CWS wells

Forty-two CWS drill reports obtained from Manitoba Groundwater documented many instances of sand collapsing into drill holes demonstrating the sand pillars are not stable. The well log for Bru 95-8 in the HGR report states that the sandstone is fine grained, well sorted, poorly cemented and of low strength and that the borehole would not stay open without drill mud. The core logs for Bru 95-6, 95-7, and 96-1, all state the sand is poorly cemented with low strength. These drill reports and core logs demonstrate the sand pillars would be prone to slumping. The airlift method of extraction would not be viable for strongly cemented sand pillars. Wherever sand extraction occurs with the airlift method, sand must be unconsolidated. The so-called “sand pillars” between clusters would eventually slump and move into the large cavities created by the sand extraction.

According to a recording and a transcript made by local volunteers for the CWS Virtual Open House, Brent Bullen, Chief Operating Officer of CWS stated in response to a question about the cavities;

“We are seeing indication that the sand will actually move and rest back in. It’s a unique sand it has many properties so would actually stand up.”

This statement indicates that CWS acknowledges the sand pillars would slump into the cavities in the sandstone. However the statement by B. Bullen is nonsensical. How can sand rest back in to fill cavities and stand up to support cavities at the same time?

Sand slumping would enlarge the cavities under the well clusters creating an ever more unstable situation. Figure 4 illustrates the geometry of the well clusters and a unit cell within the clusters.

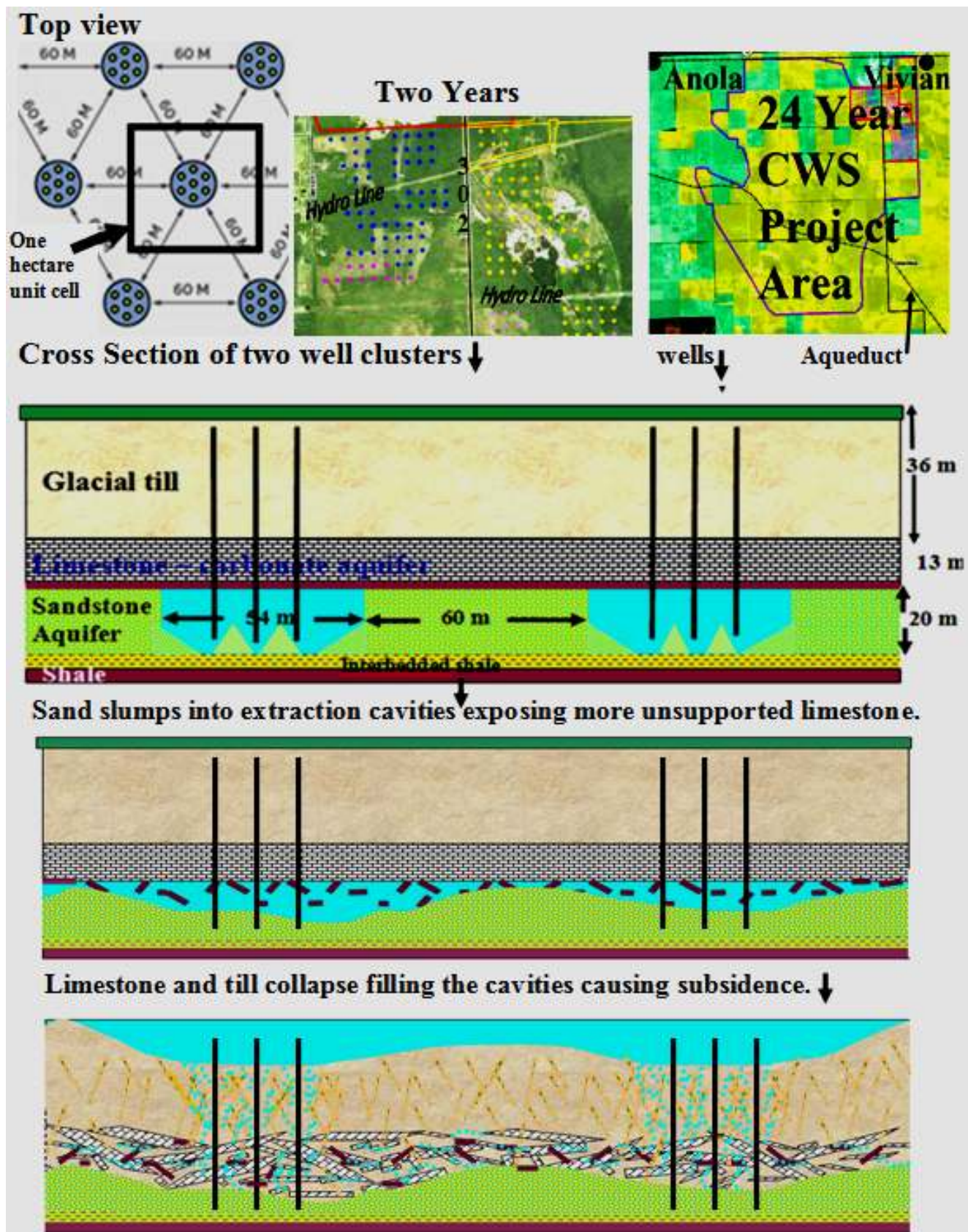


Figure 4. Land Subsidence from CWS well clusters and subsequent aquifer damage and contamination from surface runoff and drainage.

Figure 4 illustrates the progressive slumping of sand pillars into the excavation cavities and the subsequent collapse of the limestone layer. The subsidence and collapse would open the remaining carbonate aquifer to contamination from surface water runoff.

The unit cell in figure 4 is 114 meters wide by 98.7 meters high covering 1.12 hectares with a central cavity of 54 meters in diameter. The extraction EAP states that a cone of sand would be extracted around each well and that the wells in each well cluster are separated by 18 meters. According to the extraction EAP 3,000 tonnes of sand are to be extracted from each well in a well cluster. The actual volume of material extracted from each cluster would be greater due to the waste in terms of concretions and other over sized particles that are screened out at the extraction site.

A right circular extraction cone with the base at the top, a depth of 20 meters, a sand fraction of 0.8, and a dry sand density of 1.65 t/m^3 , would have a base radius of 10.4 meters ignoring the wastage.

The details of the calculation are as follows. The volume V of a right circular cone is $V = \pi r^2 h / 3$ where r is the radius of the base of the cone and h is the height of the cone (depth of sand extracted). Using a dry sand density of 1.65 tonnes/cubic meter, the volume of sand extracted plus water extracted per well would be $3000 \text{ t} / (1.65 \text{ t/m}^3) / 0.8 = 2272 \text{ cubic meters}$. Using the formula for the volume of a right circular cone, for a sand depth of 20 meters radius would be 10.4 meters.

The extraction cones around each well would overlap such that the entire 54 meter diameter well cluster would be open at the top. The extraction ratio for the cavity for the unit cell shown in figure 4 would be 0.203 (~20%). The unit cell and the 20% extraction ratio in the sand layer repeats as the well clusters expand. The extraction ratio quoted in the EAP for the processing plant of 5% would include the layers of limestone and glacial till above the sand layer thus giving a much smaller extraction ratio.

At the CWS Virtual Open House Brent Bullen stated;

“We look at global sustainability we actually will take on average 1% of the resource in the global space that’s in the Winnipeg formation.”

The global ratio in the entire global space of the Winnipeg formation is not relevant to subsidence for the room and pillar configuration in the excavated area of the well clusters. To determine subsidence the extraction ratio within the sand layer is required only in the area of the extraction well clusters. The thicknesses of the limestone and till layers are relevant to determine the stability of the limestone and the total unsupported weight of overburden above the cavities but not to determine the extraction ratio relevant to sand slumping. In fact the thicker the layers above the extracted layer, the more unsupported weight that would contribute to subsidence and formation of sinkholes even though, if included in the extraction ratio, thicker layers of limestone and till would decrease the extraction ratio.

As the sand slumps into the cavities the unsupported cavity area would increase as the extraction proceeds. Eventual collapse of the limestone and till and subsequent subsidence would be inevitable over the entire area of the well clusters. A huge ever growing depression from subsidence would result that could fill with surface water. The depth of the depression would vary depending on the residual sand left after extraction in each well cluster and the degree of slumping from the surrounding sand.

Individual sinkholes could form for a well cluster to a depth of 20 meters, the total depth of the sand layer. Sinkhole formation around each well is documented in a report I wrote for What the Frack Manitoba of

February 2021 reviewed by Dr. Ingraffea of Cornell University a world renowned expert on well fracture mechanics.²⁵ The general subsidence area covered by all well clusters could be punctuated with these deeper sinkholes.

An example of subsidence has occurred in Sheridan, Wyoming for an underground coal mine abandoned in 1921.²⁷ The mined coal cavities were under a solid supporting coal layer covered by overburden analogous to the CWS sand extraction cavities under solid limestone covered by glacial till at Vivian. At Sheridan the cavities were supported laterally by solid coal pillars. At Vivian the cavities would be surrounded by unconsolidated sand that would not be supporting. Thus subsidence at Vivian would therefore be more likely than has occurred at Sheridan. The general subsidence is punctuated by deeper sinkholes at Sheridan as shown in Figure 5 taken from the Geological survey professional paper describing subsidence at Sheridan in the Powder River Basin.²⁷ Figure 5 foretells the future landscape at Vivian.



Figure 5. Subsidence and sinkholes at Sheridan, Wyoming from an abandoned underground coal mine²⁷

The carbonate and sandstone aquifers would be exposed to contamination from agricultural chemicals, animal fecal matter, septic tank seepage and surface that would runoff into the subsided depression and sinkholes. This contamination would migrate in the carbonate aquifer exposed by subsidence. The contamination would eventually discharge to the Red River contaminating all the wells along the flow path. There may be hydrogeological connections between the aquifers and Cook's Creek and the Brokenhead River causing discharge of contaminants into these fish-bearing waters. The large and ever growing area of subsidence and sinkholes would disrupt the local surface runoff patterns and may create permanent swamps that could drain into the Brokenhead River and Cook's Creek carrying contaminants. The fish-bearing waters of the Red River could also be contaminated.

4. Waste Disposal

According to the HDR oversized particles, mainly sand concretions, would be screened out at the extraction site and sent for disposal at a licensed facility. The licensed facility is not named nor is the volume of screened waste material quantified. A paper by Schrieber and Riciputi (2005) identifies concretions formed in the Winnipeg sandstone as containing pyrite and marcasite.⁷ Figure 6, a photograph of extracted sand south of Vivian taken by a nearby concerned citizen in the spring of 2020, shows that the concretions can be large and significant in volume. Note in the second panel of figure 6 the reddish colour indicating oxidation of pyrite.



Figure 6. Concretions potentially containing sulphide in pyrite and marcasite in sand piles extracted near Vivian, Manitoba in the spring of 2020.

Pyritic oolite nodules described by Watson in the Winnipeg formation ⁸ have also been observed in the extracted sand piles at Vivian. These oolite nodules could be screened out and added to the pyritic waste at the extraction site. Such concretions and oolite nodules were not analyzed for sulphide and heavy metal content nor subject to acid base accounting. These concretions and oolite nodules would likely be acid generating and would require specialized storage on site and disposal as acid generating waste. It is essential that the concretions and oolite be independently sampled and analyzed by acid base accounting and heavy metal content to determine the potential for acid drainage and heavy metal mobilization.

Drill cuttings would require disposal. The HGR identifies the shale drill cuttings as potentially acid generating, (PAG), which would require protective storage. Some of the larger shale fragments could be screened out and require specialized disposal for PAG waste. The volume of such screened out shale fragments has not been considered.

The HGR states regarding the small volume of PAG drill cuttings;

“Therefore, this very small volume of waste material will need to be managed in a manner that is protective of groundwater quality. This will require additional characterization and mitigation measures which may include blending/co-deposition of potentially acid generating (PAG) or uncertain materials with Non-PAG materials in a designated area at surface to create a blended material with sufficient buffering capacity, use of organic matter to control redox conditions or construction of a temporary waste storage facility designed to safely contain waste materials.”

The volume of PAG tailings, CWS terms “overs”, is essential to determine the size and feasibility of storage or other mitigation measures. At other mine sites such as Snow Lake, PAG tailings are crushed and immediately transported by pipeline for disposal at the bottom of Anderson Lake.²⁸ Such a potential disposal location for acid generating tailings is not present in the Vivian area.

CWS has been negligent in not analysing the “overs” and concretions for acid generation potential and not determining the volume of all screened out tailings as the extraction site. CWS has given only a brief vague description of potential mitigation measures for PAG waste. The entire treatment of PAG waste has been glossed over and inadequately addressed. Potential major sources of PAG such as concretions, interbedded shale, and oolite have not been quantified and are ignored. The sand samples that were corrupted by

extensive weathering in stockpiles could contain significant quantities of marcasite that contains sulphide as documented at Wanipigow.^{3,7} Large amounts of acid generating tailings from the extraction facility without an adequate disposal location such as Anderson Lake would cause the project to be untenable.

5. Unrealistic Groundwater Model Simulations

The groundwater model simulations using the finite-element code FEFLOW v.7.3 were unrealistic. Only zero and fifty percent re-injection of water was modelled. The fifty percent re-injection scenarios were actually drawdown simulations with about ½ the withdrawal pumping rate of the zero percent re-injection. No water re-injection actually occurred either in the modelling or in the field tests.

CWS has explicitly stated that no discharge of water to the environment would occur from the extraction operations. Thus virtually all the water extracted with the sand would be re-injected. The extraction EAP states that only 10 US gallons per minute (gpm) would be directed into the slurry line recycle water loop. The remainder of water in the sand would be re-injected. The maximum rate of water plus sand extracted per well cluster is given in the HGR as 540 gpm. The amount of water extracted with the sand would vary according to the HGR from about 30% initially to 80% by the end of the 5 to 7 days of extraction. Thus nearly 100% of the water extracted with the sand would be re-injected. The 10 gpm water in the sand sent to the slurry loop would replenish the water lost to wet the sand stockpiles at the processing plant.

The finite element model and the field tests did not examine the actual intended operating conditions of near 100% re-injection of water. Modelling and measuring the fate and quantity of re-injected aerated water is essential. Re-injection of water would create a local high water pressure (head). It is recognized in the HGR that the shale aquitard would likely be compromised by excavation activities leading to mixing of aquifer waters. In the far field the groundwater pressure (head) in the carbonate would be lower than in the local high groundwater pressure region around the point of aerated water re-injection. Groundwater flows from high pressure to low pressure.²⁹ Some aerated re-injected water would enter and migrate in the carbonate aquifer. The amount of water that would enter the carbonate aquifer during re-injection at operational rates should have been modelled. Contaminated water would move much more quickly through the fractures in limestone than through the sand matrix of the sandstone aquifer.¹³ The contamination could include harmful microbes, acid, and heavy metals including arsenic and selenium. It is essential to determine movement of the re-injected water through the carbonate to determine the contamination potential for the aquifer. The critical and essential analysis of re-injected water flow to the carbonate aquifer was not done. The fate and amount of the aerated re-injected water in the sandstone should also have been determined.

The amount of heavy metals released to the aquifers is likely to be oxygen limited. It is essential to know how much oxygen would be introduced to the aquifers and the movement of the oxygen through the aquifers. Not only dissolved oxygen could be re-injected but gaseous oxygen in air bubbles entrained in the water during the airlift process. Gaseous air could also enter the aquifers directly from the air injection tube in the extraction wells. F. Somji, President and CEO of CWS, stated in a Sept. 11 letter of to the IAAC that the air injection tube is shorter than the sand recovery tube so that the air would not directly enter the aquifer.³⁰ However, especially during initial priming of the system and during operation, some leakage of gaseous air to the aquifer could occur. It is essential to quantify the volume, rate and fate of all sources of oxygen introduced into the aquifer by the extraction process including from air injection. This has not been done in the groundwater modelling.

During CWS sand extraction operations simultaneous sand plus water extraction and re-injection of surplus aquifer water would occur. At no time would only water withdrawal occur during sand extraction. It is mystifying why so much effort was spent on irrelevant well drawdown studies that would never occur during

production operations. The essential studies to determine the amount of oxygen in re-injected water, the amount of gaseous air introduced into the aquifer, the quantity of the re-injected water, the flow path and ultimate fate of the re-injected water and gaseous air together with the magnitude potential geochemical reactions that could occur with this aerated re-injected water and gaseous air were not done.

The 50% re-injection scenario modelled was in fact done by simply decreasing the well pumping rate by $\frac{1}{2}$ from the 0% re-injection scenario as shown in the following statements from the EAP.

“One production well (representative of the Project) was specified since at any moment in time production is occurring at one well cluster. Well cluster number 213 (Figure 6-5) was arbitrarily chosen as the location for the well boundary condition for the steady state predictive scenarios (Scenarios 1 through 3). The extraction rate assigned to the pumping well in the Scenarios 1 through 3 was scaled according to the injection rate as follows:

- *Scenario 1 (0% re-injection): Pumping Rate = 2,998 m³/day (550 US GPM)*
- *Scenario 2 (50% re-injection): Pumping Rate = 1,526 m³/day (280 US GPM)*
- *Scenario 3 (0% re-injection): Pumping Rate = 2,998 m³/day (550 US GPM)”*

Thus for the 50% re-injection scenario the pumping rate was reduced by about one half rather than injecting 50% of the water and with drawing 100%. In other words in the modelling study water was never re-injected, the pumping withdrawal rate was simply reduced.

In finite element modelling discretization must be very fine around a withdrawal well. For an injection point nearby another very finely discretized area would be required for the water injection.

The HGR states;

“Element size near the model boundaries are approximately 400 m, refined to approximately 60 m near stream boundary conditions and approximately 5 m around production wells. The groundwater model is also refined to approximately 50 m over the footprint of the project and increases to 75 m and 100 m within a 1 km and 4 km radius respectively. The groundwater model consists of 167,760 elements (84,423 nodes) per model layer for a total of 1,174,320 elements... Well boundary conditions act to remove water from specified grid cells at a specified extraction rate.”

Rather than going to the time and expense of discretizing very finely with very small element sizes for water withdrawal and again for water injection, the same model was used for the 50% scenario as the 0% scenario with the withdrawal pumping rate decreased by about one-half.

Having a model with two very finely discretized regions very close together might not result in good resolution of the complex head distribution and groundwater flow pattern that would result. Simultaneous re-injection and withdrawal of water very close together is a difficult modelling challenge and was never done. The withdrawal rate of water was simply reduced for the water well Bru 95-7 to attempt to simulate re-injection. The net water input for 50% re-injection and 100% water withdrawal would be 50% water withdrawal. The actual production scenario would be almost 100% water re-injection and 100% water plus sand withdrawal. The net water change rate in the aquifer would be much smaller than the water withdrawal and water re-injection rate. For the model used in the hydrogeological study for a 100% water re-injection and 100% water withdrawal scenario the net withdrawal pumping rate would be zero and there would be nothing to report for well drawdown. The scenario of 100% water (plus sand) withdrawal and nearly 100% water re-injection scenario that would actually occur was never modelled nor field measured in the hydrogeological study.

The drill records obtained from Manitoba Groundwater show Well Bru 95-7 used for the pumping tests for the hydrogeological study was constructed with no outer well pipe for re-injection of water. Well Bru 95-7 was designed for water withdrawal pumping tests only. All the field tests and modelling results were done for water withdrawal pump tests that have no relevance to the sand extraction process that the hydrogeological model was purported to support.

In reality the CWS airlift extraction operation would inject aerated water near the top of the sandstone aquifer that would increase the groundwater pressure around the injection point. This higher pressure zone above the bottom of the well would override the pressure drawdown around the deeper sand extraction point so that nearby domestic water wells in the carbonate would experience pressure (head) increase rather than decrease or drawdown. Fine silica sand injected could migrate across the degraded shale aquitard and enter into domestic wells in the carbonate turning the well water cloudy. Brown discoloured well water was reported in the public review of the CWS Vivian sand processing plant project by a resident nearby the CWS sand preliminary test sand extraction activities at the CWS Centre Line Road site. The brown discoloured water occurred in the well water only at the time of CWS sand extraction and had never occurred previously. This evidence of discoloured well water confirms that pressurization and turbidity effects could be experienced by nearby well owners during CWS extraction activities rather than drawdown. Accompanying contamination of the well water by heavy metals, fluoride and radon gas would not be so readily evident without water analysis. Ill effects of such potential contamination such as organ failure, loss of hair and teeth, fluorosis and cancer would take longer to manifest.

The results from the well drawdown tests quantifying the drawdown effect on nearby domestic water wells are misleading. Rather than temporarily drying up nearby domestic wells around the sand extraction, wells could back up from the re-injection pressure and return cloudy water high in fine silica particles.

The re-injection point of the CWS sand extraction system would be according to the Manitoba Groundwater and Well Water Act, an injection well requiring a permit from the Water Director.¹¹ To our knowledge CWS has not obtained such a permit. CWS has not recognized and quantified the pressure effect of re-injection in their misleading hydrogeological study.

It appears that meaningless drawdown studies were a deliberate tactic to deceive reviewers, the regulator and the public into believing that an extensive comprehensive hydrogeological study was done that would support and verify the feasibility of the extraction project. We have not fallen for this deception.

6. The Winnipeg Aqueduct

As shown in figure 4 and figure 9 the Winnipeg aqueduct traverses the entire CWS project area. The slurry lines and return recycled water loops would eventually have to cross the aqueduct likely multiple times. The aqueduct is known to have cracks that allow infiltration of surface water.²⁶ Slurry line spills near the aqueduct could contaminate Winnipeg's drinking water supply with harmful microbes, arsenic, selenium, other heavy metals and the highly toxic acrylamide monomer. A major break of the slurry line would leak at a rate of up to 24 cubic meters per minute as documented in the CWS processing plant EAP. The aqueduct could be submerged with a volume of about an Olympic sized swimming pool in two hours. A gradual undetected leak could infiltrate the aqueduct undetected for a long time. The land subsidence and wetlands created by the well clusters on either side of the aqueduct could destabilize the aqueduct and adversely affect drainage around the aqueduct. Flooding of the aqueduct from subsidence wet lands could occur.

CWS is applying for a licence up to 2025. The excavations are not planned to reach the aqueduct by 2025. Project alterations after 2025 such as crossing of the Winnipeg aqueduct could be approved by an alteration request under the Environment Act with no consultation with the City of Winnipeg or the federal government. CWS has failed to consider the potential detriment of the extraction project on the Winnipeg aqueduct. CWS has failed to notify the City of Winnipeg of this eventual disturbance of the aqueduct and has not participated in or initiated a legal agreement with the City of Winnipeg for the CWS slurry operations to cross or be in the vicinity of the aqueduct. Failure to consider the eventual risk to the Winnipeg aquifer and to devise a method to avoid notification and approval by the City of Winnipeg for aqueduct crossing is deliberate avoidance of responsibility by CWS.

7. Section 35 Consultations

The large land disturbance from clearing slurry lines and well cluster drill pads would cause long term damage to the traditional lands of First Nations and Métis in the area. The land subsidence and sinkholes would have a devastating impact on traditional lands and wildlife and likely the fish-bearing water bodies of Cook's Creek, the Brokenhead River, and the Red River. The entire extraction project is on treaty one lands. Crown land where the indigenous people have harvesting rights would be adversely affected by the extraction project. There has been no Section 35 consultation undertaken by the provincial crown and as specified in the sections 155 (b) and (i) and other provisions of the Impact Assessment Act³² and by the Constitution of Canada. The extraction EAP states;

“The Project is not expected to adversely impact the exercise of Indigenous or Treaty rights.”

No consultation is planned. CWS should ensure that the province carry out consultations. CWS must provide full and complete information for the consultations and comprehensively reply to all questions and concerns of First Nations would raise in the consultations.

8. Noise and Light disturbance

CWS has not adequately quantified the light disturbance from 24 hour drilling and slurry line operations and has not measured the noise levels.

The EAP states;

“The impact of the Project on noise levels at nearest points of reception (e.g. nearest residences) is assessed as minor to moderate with intermittent duration and short-term frequency. Example noise sources associated with Project activities include mobilization of extraction well drilling equipment, drilling of wells and operation of pump stations. The following measures will be implemented to reduce noise generated from Project activities: • Vegetation clearing will be minimized to the extent feasible. • Project activities will setback a minimum of 100 m from nearest residences. • Mobile equipment and vehicles will be kept well maintained and will be fitted with mufflers, and other noise mitigation equipment as required. • Unnecessary idling and revving of engines will be avoided. • Additional noise mitigation measures will be applied (e.g. portable noise barriers) as required. In consideration of the above measures to minimize noise levels due to Project activities, it is anticipated that noise levels will be adequately attenuated.”

Mitigation measures such as, setbacks, mufflers, portable noise barriers are vague and the effects of such mitigation have not been quantified. Additional noise mitigation measures are not specified and are meaningless.

Residents in the town of Vivian have complained about noise levels from CWS sand extraction activities in the LSL quarry pit about two kilometres south west of Vivian that have occurred since the spring of 2021. The noise was from one drill rig and sand extraction from one well, not several operating at once as would occur for the CWS operational well cluster extraction. This is definitive evidence that a 100 meter setback and intervening bush would be ineffective noise attenuation of CWS extraction activities. Figure 7 illustrates the CWS quarry drilling activities.



Figure 7. CWS drilling activities in a quarry southwest of Vivian Manitoba commencing in the spring of 2021.

The EAP states;

“Fully shielded directional lighting fixtures will be used to focus light specifically to work areas to minimize the dispersal of light to the surrounding Project Site.”

This appears to be the only reference to light pollution and mitigation of the effects to residents. The drilling rigs would be lit 24-7. Slurry lines and equipment with lights are to operate day and night. There is no quantification of the amount of light disturbance that would occur or any determination of the effect of this minimal mitigation measure of focus light. Focus light may not be feasible for drill rigs. Residents have witnessed intense yard night time lighting occurring at quarry sand extraction activities carried out near Vivian by CWS.

Below is a link to a clip of CWS night time silica sand extraction from the LSL quarry about 2 km southwest of Vivian. Both the penetrating noise and the extremely bright light pollution are evident.

["https://www.dropbox.com/s/0hfqzckgv68f61o/img_0623.mov?dl=0"](https://www.dropbox.com/s/0hfqzckgv68f61o/img_0623.mov?dl=0)

The lack of quantification and recognition of the detrimental effect of light pollution from the extraction project by CWS is extremely negligent.

9. Greenhouse Gas Emissions

The total greenhouse gas (GHG) emissions summarized in Table 6-3 of 6.8 kt of the Extraction EAP were not combined with the GHG from the processing facility of 34 kt given in the processing plant EAP. The projected GHG from all users of a new gas line to be constructed to serve the CWS processing plant were not included in the total GHG impact for the CWS projects. The GHG emissions from the plant and extraction project might not extend beyond the 2050 target for zero net emissions according to the project's 24 year stated lifetime. However the project start date could be delayed or production could continue beyond 2050 through submission of project alterations as described in the executive summary of the extraction EAP. The new natural gas line planned for the CWS processing plant would continue operation beyond 2050. There are no plans provided by CWS to meet 2050 GHG reduction targets that would be required by the new Canadian Net-Zero Emissions Accountability Act (Bill C-12). The mitigation measure of geothermal electrical heating for the CWS processing plant sand dryer may be required to conform to the new federal legislation. CWS has not considered such mitigation measures.

The HGR states;

“Pumping stations will be installed as necessary along the slurry pipe to facilitate transport of the sand and groundwater slurry to the Processing Facility. This method of silica sand extraction will minimize above-ground disturbance and eliminate the need for trucks to transport the sand. As new extraction well locations and associated piping are established in the sequential progressive sand extraction process, pumping stations will be dismantled and relocated to optimal locations to facilitate movement of the sand and groundwater slurry through the slurry pipes to the Processing Facility.”

The Extraction EAP states;

“The dewatering and pump station will be powered via direct mainline from Manitoba Hydro to reduce diesel consumption. It is expected that the dewatering and pump station will require 1460 connected hp to operate.”

The cost to provide hydro lines and hydro power to the pump stations is not documented. The movement of the pumping stations would require new hydro lines and hook-ups as the extraction progresses. This continual movement of hydro power installation is likely to be far more expensive than providing the power via diesel generator. CWS has not made this essential cost comparison. Manitoba Hydro might not be willing to dismantle and reconnect power every year to the moveable pump stations. Such an operation would add to the project land disturbance and require expensive rehabilitation. CWS has not determined the additional land disturbance, cost and methods of required rehabilitation for the movement and installation of new hydro lines as the pump stations are moved.

Table 6-3 of the extraction EAP gives the GHG emissions of 394,712 kg/CO₂/yr for diesel generators that would provide power for slurry line pumping. The GHG for the pumping stations is given as only 12,432 kg CO₂ per year. The low GHG for the pumps stations is not explained but according to table 6-3 of the CWS Processing Plant EAP would be indirect GHG attributed to hydro usage.

We can only assume that the diesel generator GHG of Table 6-3 of the Extraction EAP would be for the six inch HDPE slurry feeder lines that would be moved every five to seven days. The hydro power for pumping stations would be used for the fourteen inch HDPE slurry lines. If diesel generators would be required in lieu of hydro the GHG emissions for the 14 inch slurry lines are bound to be comparable to the slurry feeder lines. Every year as the pump stations would become further from the processing plant the energy required and GHG emitted from the pump stations would increase. The 1460 hp given for the operation of the pumping

station is equivalent to 1 Mw. Table 6-3 gives the pumping hours per year as 8784 hours. One Mw of energy for 8784 hours is 31.6 TJ of energy per year required for the pumping station. A diesel generator is only about 35% efficient.³⁴ The GHG per GJ of energy in diesel fuel is 74.1 kg/CO₂e/GJ.³³ Using this information a pump station using diesel generators would release 6.7 kt CO₂ per year.

The total GHG given in Table 6-3 is 6.8 kt including the small emission of 0.012kt for the hydro powered pump stations. The initial GHG release would be about double, 13.5 kt per year for diesel powered pump stations. By the end of the project lifetime the pumping stations would be at least 6 times the initial distance from the processing plant. The GHG released could increase to more than 40 kt per year for diesel powered pump stations. The 6.8 kt per year fixed GHG from table 6-3 would give a total of 46.8 kt GHG per year assuming the feeder slurry line length would remain the same as the project extends. To this must be added the GHG from the processing plant of 34 kt per year. The total GHG for the project would be at least 80 kt per year by the end of the project. The total GHG would be 47.5 kt at the beginning of the project for diesel powered pump stations. Even with hydro supplied pump stations which seems to be extremely unlikely, the GHG for both the extraction and the processing plants would be 40.8 kt per year.

Emissions over 50 kt per year are large final emitters and must be reported to Statistics Canada. In 2018 Manitoba had eight large final emitters. For diesel powered pump stations by the end the 24 year project period the GHG for both CWS projects would be about the same as the Summit Road landfill at number 6 amongst the large final emitters for Manitoba.³⁵

Contrary to the assertions in the EAP that;

“the impact of the Project on Greenhouse Gas contributions to the atmosphere is assessed as negligible,”

the GHG for both CWS projects would be substantial and among the largest single emitters in the province. This is another example of CWS deliberately under-representing project detriment. CCWS has also failed to account for the cumulative effects of GHG emissions from other users of the natural gas line to be brought to the processing plant, has failed to substantiate that hydro power can be used for the pump stations and has failed to comply with federal regulations of Canadian Net-Zero Emissions Accountability Act.

10. Infrastructure Disturbance

The CWS slurry lines and return recycling water lines would cross two Manitoba Hydro transmission lines one of which is an international 500 kV transmission line falling under the federal jurisdiction of the Canada Energy Regulator Act (S.C. 2019, c. 28, s. 10).³⁶ CWS well clusters would be drilled on either side of the transmission lines as shown in figure 8. The well clusters may cause ground disturbance of the transmission lines. CWS vehicles, equipment and slurry lines would cross the transmission lines.

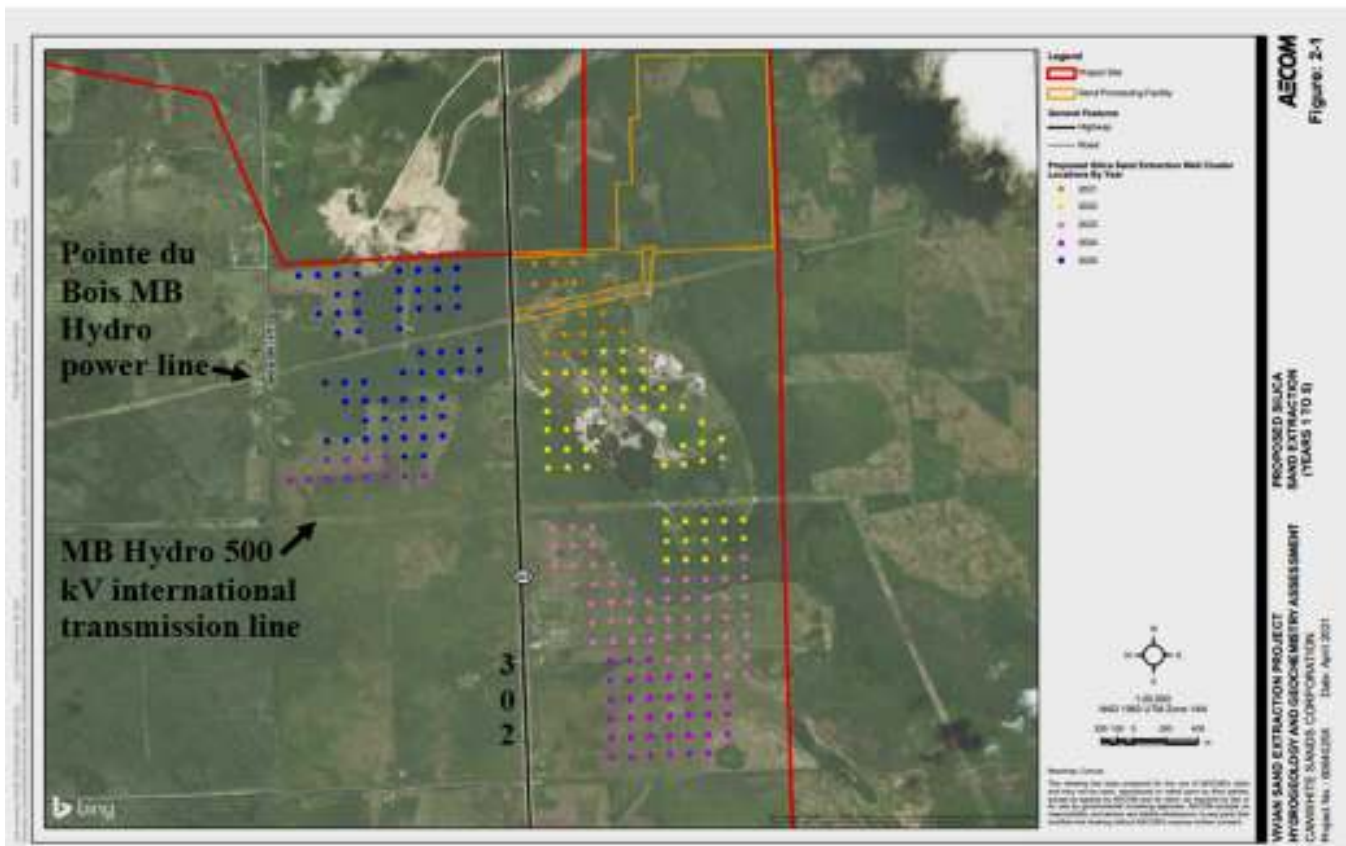


Figure 8. Planned location of CWS well clusters up to 2025 from the CWS HGR

Section 273 of the Canada Regulator Act states;³⁶

“Prohibition — construction or ground disturbance

273 (1) It is prohibited for any person to construct a facility across, on, along or under an international or interprovincial power line or engage in an activity that causes a ground disturbance within the prescribed area unless the construction or activity is authorized by the orders or regulations made under section 275 and done in accordance with them.

Marginal note: Prohibition — vehicles and mobile equipment

(2) It is prohibited for any person to operate a vehicle or mobile equipment across an international or interprovincial power line unless
(a) that operation is authorized by orders or regulations made under section 275 and done in accordance with them;

Orders

275 (1) The Commission may, by order, give directions
(a) governing the design, construction, operation and abandonment of facilities constructed across, on, along or under an international or interprovincial power line;
(b) prescribing the area for the purposes of subsection 273(1);
(c) authorizing the construction of facilities across, on, along or under an international or interprovincial power line;
(d) authorizing ground disturbances within the prescribed area;

- (e) governing the measures to be taken in relation to
 - (i) the construction of facilities across, on, along or under an international or interprovincial power line,
 - (ii) the construction of an international or interprovincial power line across, on, along or under facilities, other than railways, and
 - (iii) ground disturbances within the prescribed area;
- (f) authorizing the operation of vehicles or mobile equipment across an international or interprovincial power line and governing the measures to be taken in relation to that operation;”

The location of the MB Hydro Pointe du Bois power line and the 500 kV International Transmission Line to Minnesota as well as the Winnipeg aqueduct and the CN mainline railway are shown in figure 9.

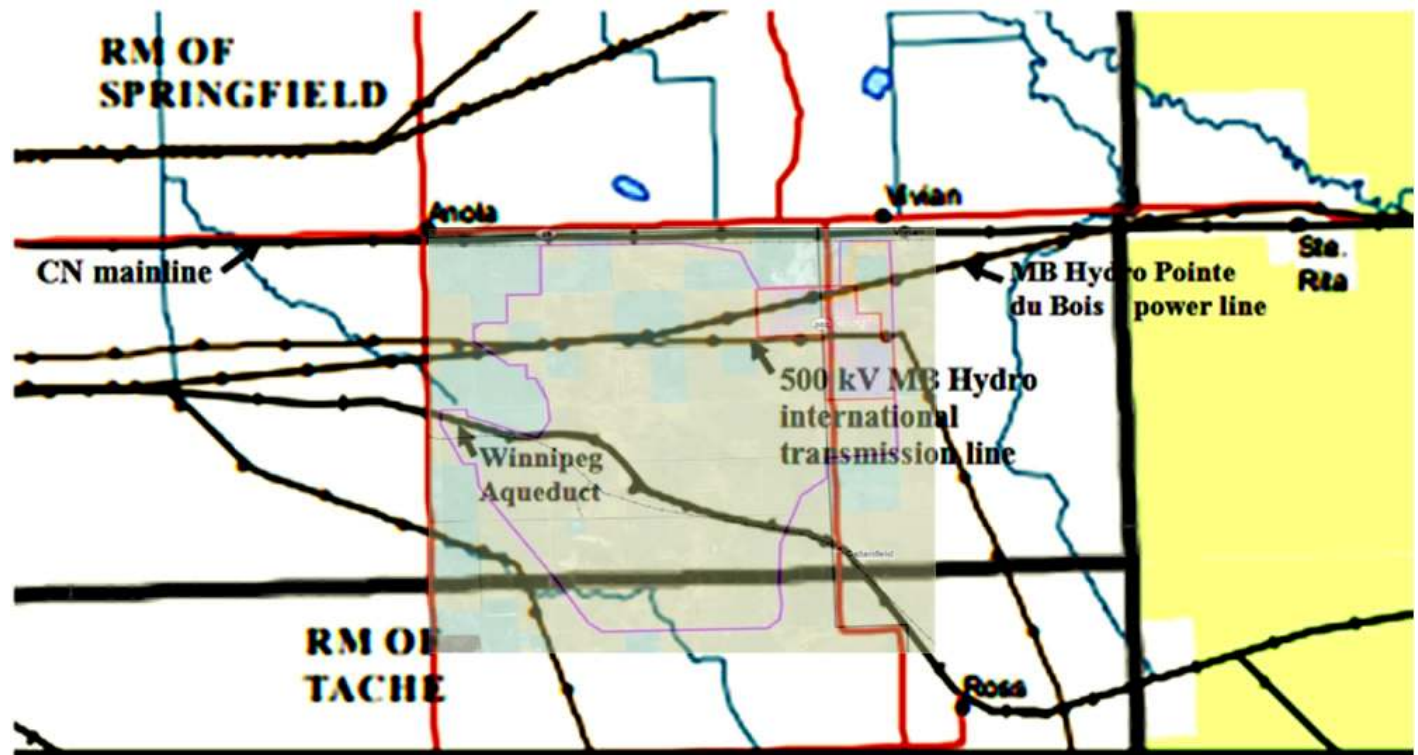


Figure 9. Location of MB Hydro Pointe du Bois power line, the MB Hydro 500 kV international transmission line, Winnipeg aqueduct and CN mainline.³⁷ The CWS project boundary is shown by the purple line

Fourteen and six inch diameter HDPE slurry lines that would carry the extracted sand to the Vivian Sand Processing Plant and recycled return water lines would cross the Hydro lines multiple times. The six inch sand slurry HDPE lines would be emptied into vacuum trucks and moved every five to seven days each time crossing the hydro lines anew when extraction is in that vicinity. The fourteen inch main slurry line and the return recycle water lines would have to be moved, crossing the hydro lines repeatedly in different locations.

Figure 4 illustrates the land disturbance that would affect the international 500kV transmission line and the Pointe du Bois power line due to land subsidence. The unconsolidated sand around the cavities would slump into the cavities gradually enlarging the area of the unsupported shale and limestone above. The limestone is not thick enough to support the cavities that would increase in size as the sand slumps. The land subsidence could cause the formation of swamps or wetlands around and crossing the hydro corridors. The subsidence would cause land depression and instability within and adjacent to the corridors and transmission lines.

As shown in figure 8 the CWS well clusters up until 2025 would be on either side of the provincial highway 302. CWS slurry lines and heavy equipment such as vacuum trucks and drill rigs would be required to cross highway 302. To our knowledge CWS has not notified Manitoba Infrastructure nor obtained permission for the disturbance to highway 302. The land subsidence that could occur from the well clusters could destabilize the road bed and would affect road drainage. CWS should have identified these engineering issues and documented the risks and planned mitigation.

11. Property Damage and Devaluation

The large project footprint of over 130 CFL football fields per year with extensive damaging land clearance for drill pads, pump stations and well clusters and slurry lines would be slow to rehabilitate and cause loss of property value and recreation opportunities. Land subsidence and sinkholes would cause permanent land disruption and change to drainage patterns that would damage and devalue private property. Aquifer damage could render the area uninhabitable and cause large outward population migration from the affected areas.

12. Wildlife and Bird Disturbance

The extensive subsidence and land disturbance from slurry line and drill pad clearance and project noise and light disturbance continuing for 24 years or more would have serious detrimental effects on birds and wildlife habitat and behaviour. Rehabilitation would take many years and not be feasible for such major disturbances as subsidence and sinkholes.

The extraction EAP states;

“The types of naturally vegetated land cover (wildlife habitat) that will be cleared (i.e., forest, meadow and willow/alder) are common within the regional area. The amount of naturally vegetated area that will need to be cleared for the Project during each year of operation is minor considering approximately 44% of the Project site is previously disturbed land cover due to human development such as agriculture, roads and aggregate quarries. Project components will be located on previously disturbed land to the extent feasible.”

This is an absurd understatement of wildlife disturbance. What about the 56% undisturbed portion that is the home to many birds and wildlife? CWS has made no realistic effort to quantify the wildlife disturbance and to specify mitigation measures.

CWS has not surveyed the wildlife present and quantified the habitat disturbance that would occur. Only vague statements are made in section 4.4.2 of the EAP on the presence of such wildlife as bear, white tailed deer moose, grey squirrel, red squirrel, smaller rodent species, snowshoe hare, red fox, coyote, American woodchuck and striped skunk. The risk to some birds is vaguely specified in Table 4-5. No mitigating measures for bird and wildlife habitat loss are given.

The EAP states;

“Light pollution emanating from the well cluster/work areas within the Project Site can also disturb wildlife and alter natural wildlife behaviour for wildlife that may be present within the zone of influence of site lighting.”

There is no quantification of this light disturbance or any mention of mitigation of this detrimental effect on wildlife.

The extraction EAP states;

“Wildlife species present in the vicinity of the Project are anticipated to be accustomed (habituated) to some level of noise due to the presence of existing developments.”

There is no supporting evidence for this statement. It is baseless conjecture deliberately dismissing the issue of detrimental noise effects on wildlife and birds. Such unsupported dismissal of project detriment is inexcusable.

13. Conclusion and Recommendations

CWS has deliberately provided misleading information and omitted essential information in the EAP and the HGR used to support the CWS Vivian Sand Extraction Project. The project detriment includes;

1. re-injection into the sandstone aquifer of excess water from the sand extraction that could lead to acid, heavy metals, selenium, fluoride, and microbial contamination of the both the carbonate and sandstone aquifers, water well poisoning and prohibited mixing of aquifer waters,
2. slurry line leakage that could pollute surface waters and the Winnipeg aqueduct with acid, heavy metals, selenium, fluoride, and toxic acrylamide monomer,
3. extensive land subsidence and sinkholes covering at least the equivalent of 130 CFL football fields per year that could destroy the integrity of both the carbonate and sandstone aquifers in the extraction area, provide a vector for surface contamination including fecal matter to enter the aquifers, cause extensive property damage and land devaluation, infrastructure damage to provincial road 302 and other roadways, disturbance of the Pointe du Bois power line and the international 500 kV MB Hydro line to Minnesota, and damage to and potential poisoning of the Winnipeg Aqueduct,
4. creation of uninhabitable land, altered drainage, damage to fish-bearing waters and outward population migration from land subsidence and sinkhole formation,
5. acid drainage from extensive tailings including pyritic concretions, oolite, interbedded shale in the Winnipeg formation, “overs” shale fragments, and from marcasite coating of the extracted sand,
6. contamination from the slurry line spills of dissolved contaminants including the highly toxic acrylamide monomer that must be eventually removed as they continually build up due to slurry loop recycling,
7. unquantified stress, hearing damage and other detrimental psychological project effects from noise and light pollution,
8. extensive irreversible unquantified wildlife and bird habitat and behavioural disruption,
9. irreparable damage to First Nation traditional lands with no Section 35 consultations as required by the constitution of Canada,
10. large GHG emissions as much as 80kt tonnes per year from the combined processing plant and extraction activities and unaccounted GHG emissions from other users of the natural gas line extended to serve the CWS processing facility, and
11. violation of the Canadian Net-Zero Emissions Accountability Act.

In the light of these egregious effects inadequately documented in the EAP and HGR submissions to support the licensing application for the CWS Vivian Sand Extraction project we recommend that a full Clean Environment Commission Hearing be convened. We recommend that a full and transparent section 35 indigenous consultation be undertaken by the province and CWS. The current licensing process should be suspended until the CEC hearings and the section 35 indigenous consultations are complete.

References

1. Government of Western Australia Department of Health Ultraviolet disinfection of drinking water, June 27, 2016 https://ww2.health.wa.gov.au/Articles/U_Z/Ultraviolet-disinfection-of-drinking-water
2. Water Research Centre, Drinking Water Treatment with UV Irradiation, Brian Oram, PG., B.F. Environmental Consultants Inc., 15 Hillcrest Drive, Dallas, PA, 18612 <https://www.water-research.net/index.php/water-treatment/water-disinfection/uv-disinfection>
3. Technical report and preliminary economic assessment on the Seymourville Silica Sand Project, Manitoba, Canada for Claim Post Resources Inc., NI-43-101 & 43-101F1, Eugene Puritch, P.Eng., Richard Sutcliffe, P.Geo., Ph.D., Yungang Wu, P.Geo., David Burga, P.Geo., Jarita Barry, P.Geo., Kenneth Kuchling P.Eng., David Orava, P.Eng., David Anthony, P.Eng., Michael Esposito, P.E., P&E Mining Consultants Inc., Report No. 292, November 1, 2014 [sedar.com](https://www.sedar.com)
4. Best Practices for Shale Core Handling: Transportation, Sampling and Storage for Conduction of Analyses. February 2020, Journal of Marine Science and Engineering 8(2):136, S. Basu, Adrian P Jones, Pedram, Mahzari, https://www.researchgate.net/publication/339426332_Best_Practices_for_Shale_Core_Handling_Transportation_Sampling_and_Storage_for_Conduction_of_Analyses
5. Iron oxidation in sediment cores (Site 1062) during six months of storage in the Ocean Drilling Program archive, September 2000, Proceedings of the Ocean Drilling Program: Scientific Results 172:1-11, I. König et al. https://www.researchgate.net/publication/262791290_Iron_oxidation_in_sediment_cores_Site_1062_during_six_months_of_storage_in_the_Ocean_Drilling_Program_archive
6. Control of Ignition Sources, Dennis P. Nolan, in Handbook of Fire and Explosion Protection Engineering Principles for Oil, Gas, Chemical, and Related Facilities (Fourth Edition), 2019, Ch 4.14 Pyrophoric Materials <https://www.sciencedirect.com/topics/earth-and-planetary-sciences/iron-sulfide>
7. Pyrite and Marcasite Coated Grains in the Ordovician Winnipeg Formation, Canada: An Intertwined Record of Surface Conditions, Stratigraphic Condensation, Geochemical Journal of Sedimentary Research 75(5):907-920. Jurgen Schieber, Lee Riciputi November 2005 <https://pdfs.semanticscholar.org/c726/0c14eefc435745019d169ed8f741ed4da6df.pdf>
8. Economic Geology Report ER84-2 Silica in Manitoba By D.M. Watson Manitoba Energy and Mines Geological Services Report, 1985 <http://www.manitoba.ca/iem/info/libmin/ER84-2.pdf>
9. Activities 2016, Manitoba Growth, Enterprise and Trade, K. Lapenskie, 2016 <https://www.manitoba.ca/iem/geo/field/roa16pdfs/GS-17.pdf>
10. Selenium Oxidation and Release during Washing of Agricultural Seleniferous Soil Samples., American Geophysical Union, Fall Meeting 2019, abstract #H41J-1835 December 2019, Pallud, C. E. , Le Vagueresse, L. M. M., Wasserman, N., Schilling, K., Johnson, T. M., Dhillon, K. S. <https://ui.adsabs.harvard.edu/abs/2019AGUFM.H41J1835P/abstract>

11. The Groundwater and Water Well Act (c.c.s.m. c. g110) Well Standards Regulation 215/2015, Registered December 21, 2015 Interconnection of geologic formations 3(1)
https://web2.gov.mb.ca/laws/regs/current/_pdf-regs.php?reg=215/2015
12. Canadian Environmental Protection Act, 1999 - Federal environmental quality guidelines – selenium Environment and Climate Change Canada, June 2021 <https://www.canada.ca/en/environment-climate-change/services/evaluating-existing-substances/federal-environmental-quality-guidelines-selenium.html>
13. Geochemical and Isotopic Characterization of a Regional Bedrock/Surficial Aquifer System, Southeastern Manitoba, Graham Phipps Manitoba Water Stewardship, Winnipeg, MB, Canada R.N. Betcher and J. Wang Manitoba Water Stewardship, Winnipeg, MB, Canada Geo Edmonton Conference 2008, https://www.gov.mb.ca/water/pubs/water-science-management/groundwater/publication/2008_phipps_geochemical_isotopic_characterization_regional_aquifer_system_southeastern_manitoba.pdf
14. Dissolved Oxygen and Oxygen-reduction Potential Concentrations in groundwater, T. R. Holm, G.K. George and M.J Barcelona EPA/600/s2-86/042 June 1986
<https://nepis.epa.gov/Exe/ZyNET.exe/2000TL3Y.TXT?ZyActionD=ZyDocument&Client=EPA&Index=1986+Thru+1990&Docs=&Query=&Time=&EndTime=&SearchMethod=1&TocRestrict=n&Toc=&TocEntry=&QField=&QFieldYear=&QFieldMonth=&QFieldDay=&IntQFieldOp=0&ExtQFieldOp=0&XmlQuery=&File=D%3A%5Czyfiles%5CIndex%20Data%5C86thru90%5CTxt%5C00000009%5C2000TL3Y.txt&User=ANONYMOUS&Password=anonymous&SortMethod=h%7C-&MaximumDocuments=1&FuzzyDegree=0&ImageQuality=r75g8/r75g8/x150y150g16/i425&Display=hpf&DefSeekPage=x&SearchBack=ZyActionL&Back=ZyActionS&BackDesc=Results%20page&MaximumPages=1&ZyEntry=1&SeekPage=x&ZyPURL>
15. Letter to the Winnipeg Free Press: Proposed Silica Sand Mine, T. Lewis, Sep 23, 2020
<https://mininglifeonline.net/company-news/letter-to-the-winnipeg-free-press--proposed-silica-sand-mine/17570>
16. University of Georgia Extension Publication, Understanding Laboratory Wastewater Tests: I. ORGANICS (BOD, COD, TOC, O&G) Oct. 2013
[https://extension.uga.edu/publications/detail.html?number=C992&title=Understanding%20Laboratory%20Wastewater%20Tests:%20I.%20ORGANICS%20\(BOD,%20COD,%20TOC,%20O&G\)](https://extension.uga.edu/publications/detail.html?number=C992&title=Understanding%20Laboratory%20Wastewater%20Tests:%20I.%20ORGANICS%20(BOD,%20COD,%20TOC,%20O&G))
17. Geoscience Frontiers Groundwater fluoride contamination: A reappraisal, Amlan Banerjee, Volume 6, Issue 2, March 2015, Pages 277-284
<https://www.sciencedirect.com/science/article/pii/S1674987114000371>
18. North Dakota Frack Waste Report June 2020 The failure to safely manage oil and gas waste, EarthWatch
<https://earthworks.org/media-releases/new-report-finds-increased-threat-from-radioactive-oil-gas-waste-in-north-dakota/> <https://41p14t2a856b1gs8ii2wv4k4-wpengine.netdna-ssl.com/assets/uploads/2020/06/ND-Waste-Report-2020-final-6-2020-2.pdf>
19. BC Centre for Disease Control Radon in Household Well Water: Contributions to Indoor Air Radon Concentrations Prabjit Barn, Abderrachid Zitouni, Tom Kosatsky, Dec. 2011
https://www.nccch.ca/sites/default/files/BCCDC-Radon_Well_Water_Dec_2011.pdf

20. Mining Review Africa, AECOM highly commended for Eastern Basin Acid Mine Drainage plant, Tessa Kruger, Feb 1, 2017 <https://www.miningreview.com/products-services/aecom-highly-commended-eastern-basin-acid-mine-drainage-plant/>
21. Speleogenesis and Evolution of Karst Aquifers The Virtual Scientific Journal ISSN 1814-294X Engineering classification of karst ground conditions, republished from : Quarterly Journal of Engineering Geology and Hydrogeology, 2003, vol. 36, pp. 101-118. A. C. Waltham and P. G. Fookes https://digital.lib.usf.edu/content/SF/S0/05/46/71/00001/K26-04222-seka_pdf4513.pdf
22. Polyacrylamide degradation and its implications in environmental systems. NPJ Clean Water 1, 17 (2018), Xiong, B., Loss, R.D., Shields, D. et al, <https://doi.org/10.1038/s41545-018-0016-8>
<https://www.nature.com/articles/s41545-018-0016-8#:~:text=The%20presence%20of%20degraded%20polyacrylamide,degradation%20under%20various%20environmental%20conditions.>
23. Critique of CanWhite Sands Minor Notice of Alteration, Jan. 22, 2021 by D.M. LeNeveu, B.Sc. (hons. phys.), M.Sc. (biophysics) B.Ed. On Behalf of What the Frack Manitoba Feb. 23, 2021, submitted to the Public Registry 6057.00 CanWhite Sands - Vivian Sand Processing Facility
https://www.gov.mb.ca/sd/eal/registries/6057canwhite/canwhite_sands_minor_noticeofalteration.pdf
24. Canada Grassy Mountain Coal Project, Canadian Impact Assessment Agency Registry, 2021 <https://iaac-aeic.gc.ca/050/evaluations/proj/80101>
25. Evidence for Aquifer and Slurry Line Contamination and Land Subsidence From Vivian Silica Sand Extraction Wells, D. M. LeNeveu, March 2021 <https://www.flipsnack.com/7CDD5666AED/canwhite-sands-extraction-method-and-potential-impacts.html>
26. Winnipeg Aqueduct Water-Leakage Repair Winnipeg, MB, Canada Submitted by Vector Construction Ltd. November/December 2013 Concrete Repair Bulletin
<https://cdn.ymaws.com/www.icri.org/resource/resmgr/crb/2013novdec/CRBNovDec13-WinnipegAqueduct.pdf>
27. Effects of Coal Mine Subsidence In the Sheridan, Wyoming, Area By C. Richard Dunrud and Frank W. Osterwald Geological Survey Professional Paper 1164, 1980
28. NI 43-101 Technical Report, Lalor And Snow Lake Operations, Manitoba, Canada Olivier Tavchandjian, P. Geo. Vice President, Exploration and Geology Hudbay Minerals Inc. March 28, 2019, effective as of January 1, 2019 https://s23.q4cdn.com/405985100/files/doc_downloads/tech_reports/canada/Lalor-NI-43-101-Technical-Report-2019-03-28.pdf
29. Groundwater, R. A. Freeze and J.A. Cherry, Prentice Hall Englewood Cliffs New Jersey, 1979
30. Manitoba Conservation and Climate Permits, Licences and Approvals, Environmental Assessment and Licensing Public Registry 6057.00 CanWhite Sands - Vivian Sand Processing Facility CanWhite Sands Corp. Proponent Response to Technical Advisory Committee (TAC) Comments, Nov.4, 2020
31. https://www.gov.mb.ca/sd/eal/registries/6057canwhite/tab_2_responses_to_public_vivian_sand_facility.pdf

32. Impact Assessment Act of Canada SC. 2019, c.28, s.1 <https://laws.justice.gc.ca/eng/acts/I-2.75/index.html>
33. Specific Carbon Dioxide Emissions of Various Fuels Prof. Dr. Volker Quaschnig Berlin University of Applied Sciences, HTW Berlin, Wilhelminenhofstrabe 75A Raum C365
D-12459 Berlin, Germany https://www.volker-quaschnig.de/datserv/CO2-spez/index_e.php
34. Feasibility Study of Energy Storage Systems in Wind/Diesel Applications Using the HOMER Model, Andrew Stiel, Maria Skyllas-Kazaco, December 2012, Applied Sciences 2(4):726-737
https://www.researchgate.net/publication/276033446_Feasibility_Study_of_Energy_Storage_Systems_in_WindDiesel_Applications_Using_the_HOMER_Model
35. Climate Change Connection GHG Emissions Manitoba Large Final Emitters
<https://climatechangeconnection.org/emissions/manitoba-ghg-emissions/manitoba-large-final-emitters-lfe/>
36. Canada Energy Regulator Act (S.C. 2019, c. 28, s. 10). <https://laws-lois.justice.gc.ca/eng/acts/C-15.1/>
37. Pointe du Bois Transmission Project Environmental Assessment Report Prepared By: Transmission Planning and Design Division Licensing and Environmental Assessment 4/11/2014 Prepared for: Manitoba Conservation and Water Stewardship, Environmental Approvals Branch
<https://www.gov.mb.ca/sd/eal/registries/5716mbhydropointedubois/eap/chapt1.intro.pdf>

Questions for CanWhite Virtual Open House for the Vivian Sand Extraction Project and Hydrogeological Report

by D.M. LeNeveu B.Sc. (hons. physics) M.Sc. (biophysics) B.Ed.

Aug. 20, 2021

1. Subsidence

The Can White Sands Corporation (CWS) Extraction EAP written by AECOM recognizes that subsidence of the extraction holes with design diameter of 54 meters may be a problem. The EAP states;

“Results of a geotechnical assessment based on preliminary exploratory drilling associated with this Project from 2017 to 2021 indicated that the overlying carbonate (limestone) geological layer needs to be at least 15 m thick to minimize the possibility of surface subsidence during sand extraction activities (Stantec, 2019; 2020; 2021).”

The Stantec reports are not available to substantiate this claim. The CWS hydrogeological study states;

“Removal of the sand will form a void in the shape of a cone extending from the bottom of the Carman Sand Member to the base of the Winnipeg Shale. The pattern of extraction cones is planned to extend laterally by successively extracting from new boreholes across the extraction area in a “room and pillar” style in accordance with the geotechnical model.”

The geotechnical model is not given.

A peer reviewed paper by Waltham and P. Fookes specifies that minimum stability thickness for limestone above a cavity must be 70% of the cavity opening dimension excluding overburden cover.¹ For the CWS standard design opening for a seven well extraction cluster the limestone thickness must be at least 37.8 m. The limestone of the carbonate aquifer in the Bru extraction area has a thick overburden cover of glacial till whose unsupported weight will increase the minimum stability thickness for the limestone.

Figure 1 shows the limestone thickness of the carbonate aquifer in the Bru extraction area and the Stantec and Waltham and Fookes thickness limits. The data was taken from CWS well records supplied by Manitoba Groundwater and from the CWS borehole records in the hydrogeological report. The well records demonstrate that over the entire Bru extraction area all limestone thicknesses are less than the minimum criteria stated by Waltham and Fookes for stability. All limestone thicknesses in the eastern Bru area where extraction activities will begin are less than the Stantec limit of 15 meters. The limestone thickness in general increases westward.¹³

A report released by What the Frack Manitoba in February 2021, peer reviewed by A. Ingraffea of Cornell University a world renowned expert on geo-mechanics, determines the shale aquitard will be unstable and slake into the cavity from the sand extraction.²

The CWS hydrogeological report in section 4.3.2 states

“It is possible that project operations will result in increased hydraulic communication between the Red River Carbonate and the Winnipeg Sandstone within the Project Area due to fractures and borehole annuli that may extend across the Winnipeg Shale aquitard. Degradation of the Winnipeg Shale could lead to a

more interconnected aquifer system comprising the Red River Carbonate aquifer and the underlying Winnipeg Sandstone aquifer.”

This statement confirms the shale aquitard could be compromised.

The glacial till overburden will gradually migrate into the cavity through the compromised limestone layer causing a cover collapse condition. In cover collapse subsidence the cavity created in the till overburden by gradual migration through the limestone layer will suddenly collapse at some undetermined time in the future leaving a large sinkhole as illustrated in Figures 2 and 3. All of the well clusters created by CWS operations are susceptible to cover collapse. A moonscape of water filled sinkholes will be eventually created. Water contaminated iron bacteria, fecal coliform from septic fields and animal feces, other microbes, and chemicals from surface runoff will have direct access to the carbonate aquifer and the sandstone through the compromised shale aquitard. This subsidence scenario is untenable.

Question:

Will CWS move their operations westward into the ALY area where the limestone is thicker and the sandstone aquifer is saline to avoid subsidence?

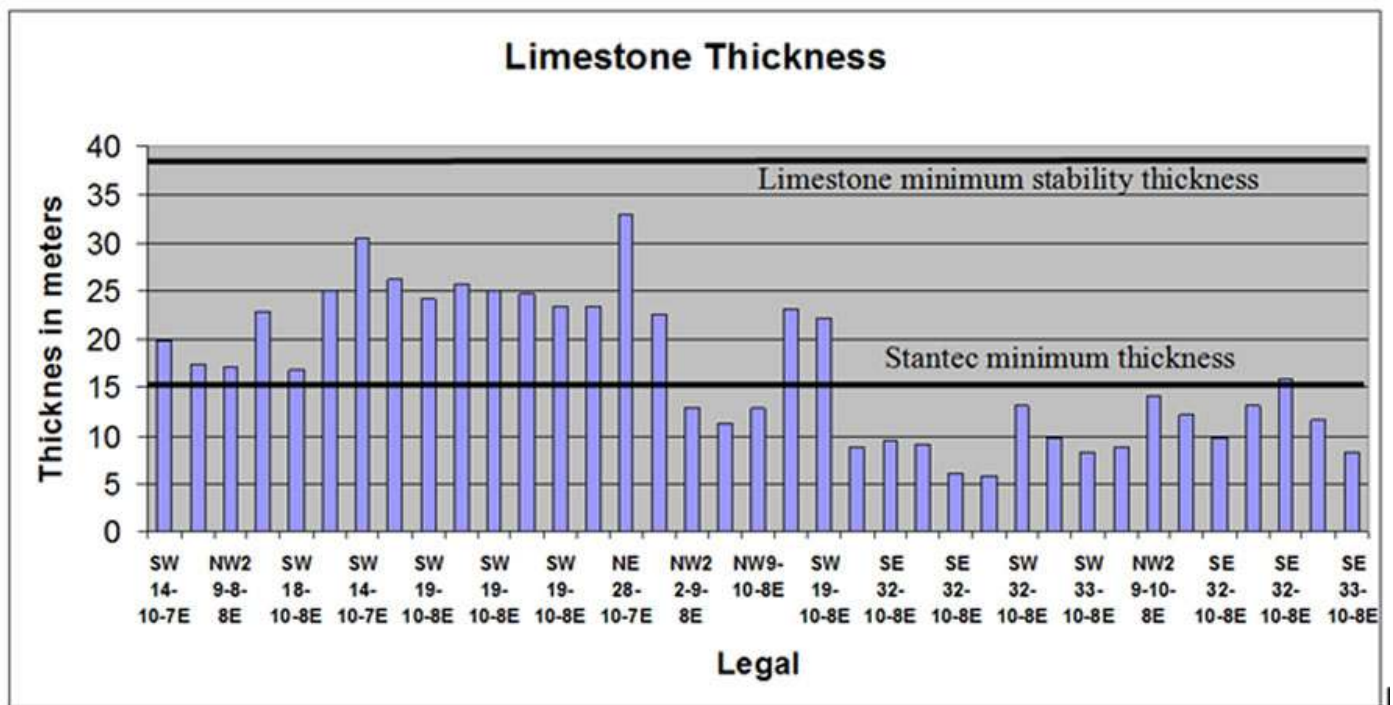


Figure 1. Limestone thickness in the carbonate aquifer of the CWS BRU extraction area.

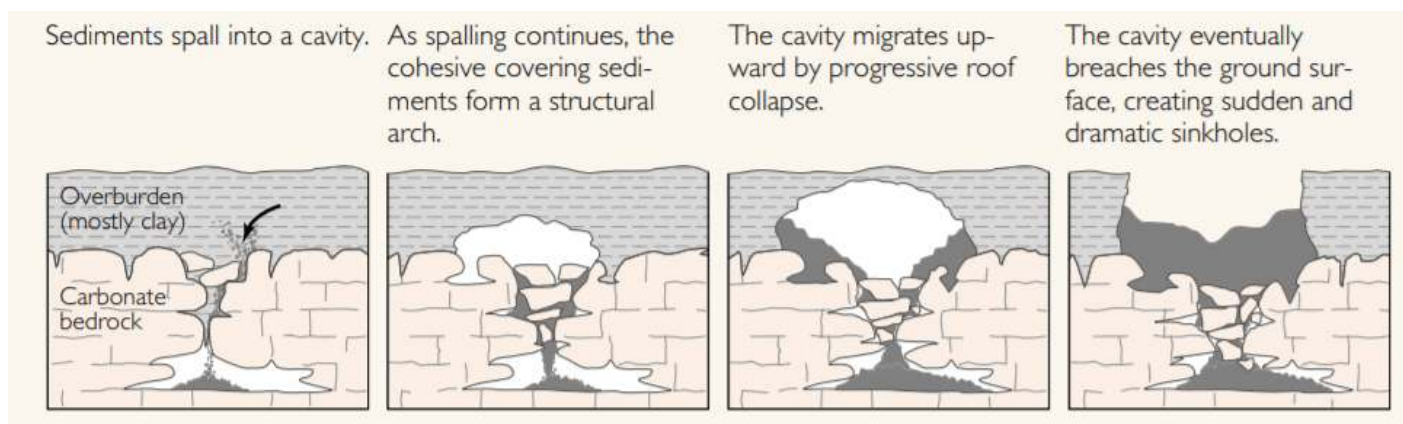


Figure 2. Cover collapse sinkholes from USGS.³

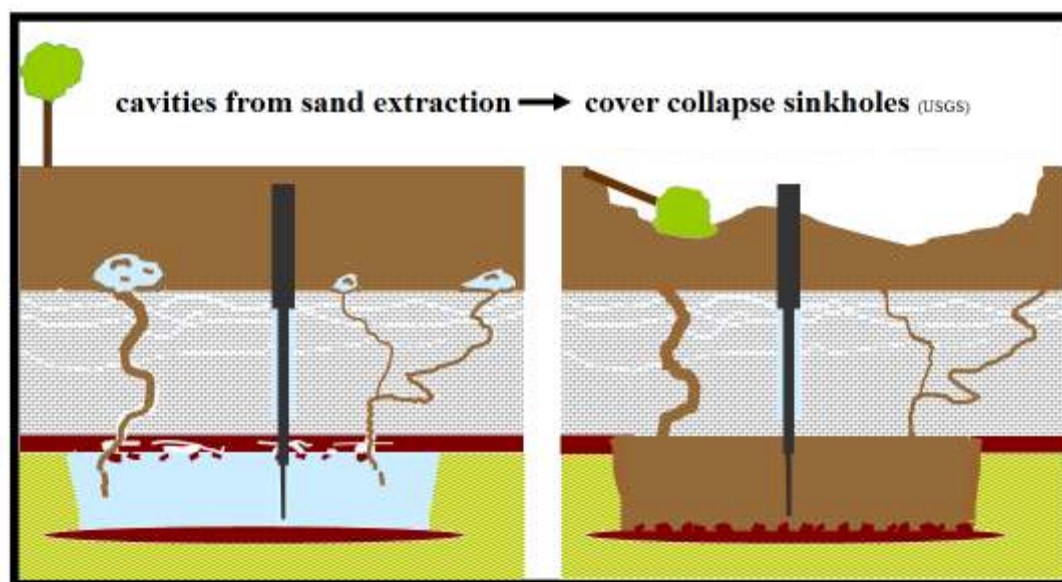


Figure 3. Sinkhole development from CWS sand extraction²

2. UV Light Sterilization

The CWS extraction EAP admits that bacteria and microbes may be introduced into the extracted water that will be re-injected to the sandstone aquifer. The EAP states;

“The groundwater flows past a series of UV lamps that expose the water to UV light and renders all bacteria and other microorganisms inactive. UV light acts very rapidly by rendering any bacteria, viruses or protozoa that may be present inert when they are exposed to the UV light making these organisms, if present, incapable of growing or infecting the water.”

The EAP admits in addition to potential microbes the re-injected water will contain oxygen. The EAP attempts to minimize the effect of this large change in the water chemistry of the aquifer system that is essentially initially anaerobic (no oxygen) by such statements as;

“For some constituents, the impact was simulated to be positive due to reduction of concentrations of iron and manganese when oxygen (air) is introduced into the aquifer or is allowed to mix with water containing lower concentrations of those elements.”

The Government of Australia Department of Health states;⁴

“UV light will only travel in a straight line so any shadow or obstruction will reduce its efficiency. Water that is not filtered can contain iron, manganese and other particles that can either absorb or scatter UV light reducing the effectiveness of the disinfection system. Microorganisms that are able to pass through protected by shadows created by dirt, debris or other microorganisms may be able to survive treatment.”

The Water Research Centre of Dallas Texas gives the following conditions for UV sterilization to be effective⁴

1. Five to ten micron pre-filtration of suspended solids
2. iron concentration less than 0.3 mg/L
3. manganese concentration less than 0.05 mg/L
4. colour – none.

Pre-filtration of the re-injection water with 5 to 10 micron filters would generate a huge filter maintenance and disposal problem for the large amounts of captured filter material. Pre-filtration of the re-injected water with 5 to 10 micron filters is not viable.

The concentration of manganese the water in the sandstone aquifer given in table 4.3 of the hydrogeological study is between 24 and 45 ppm (mg/L). The iron concentration is between 0.22 and 0.65 mg/L. The hydrogeological study states,

“Although the naturally elevated concentrations of dissolved iron and manganese were simulated to decrease in response to aeration or mixing, they may remain elevated above drinking water quality criteria during and following operations”

Thus the concentrations of iron and particularly manganese will not be reduced to acceptable levels for disinfection in the extraction dewatering process where the water becomes aerated.

This evidence demonstrates that the UV radiation will be ineffective and that potentially harmful microbes will be introduced to the aquifer. The re-injected aerated water will provide an environment where the introduced harmful microbes can proliferate contaminating the drinking water.

Question:

How will CanWhite disinfect the water re-injected to the sandstone aquifer given that UV radiation cannot be effective?

3. Core log and Winnipeg Formation sand samples are compromised

All core log samples for the Red River Carbonate aquifer and the Winnipeg Shale aquitard, (Bru 95-8, Bru 121-1 and Bru 146) and sand samples from the Winnipeg aquifer were not protected against oxidation by air. The sand samples from borehole Bru 95-3 were taken from outdoor stockpiles that had been exposed to air, rain and weathering since the well completion date of June 28, 2019 as determined by CWS well reports obtained from MB Groundwater. Sand from Bru 95-3 was extracted by air lift wells that would have exposed the sand to air in the well pipe before reaching the surface.

Samples of sand from the Winnipeg Sandstone from Bru 121 and 146 according to the CWS hydrogeological report had been previously collected and submitted by others to ALS Environmental Laboratories (ALS).

How the samples were collected, at what time and by whom is not given. Pictures of the sand samples in the hydrogeological report are open to the air and the Bru 146 samples show some brown discoloration consistent with oxidation of marcasite coating the sand. (Appendix A part 5). These samples would have likely also been collected by air lift methods and stockpile outside. All sand samples would have been exposed to air during extraction and stockpiling outside.

Air oxidation of pyrite releases sulphuric acid that mobilizes heavy metals that can escape from the samples.⁶ Most of the sulphur remaining in the samples would be in the form of sulphate rather than the original sulphide in the pyrite (FeS_2).⁶ The sulphide determination from oxidized samples will be greatly underestimated. Selenium in the samples would be oxidized by the air to soluble selenates that could also migrate from the samples and be underestimated.⁷ All the geochemical analyses in the hydrogeological report are invalid and cannot be used.

The photographs of the core in Appendix C1 of the hydrogeological are shown open to the air. Bru 95-8 according to the hydrogeological study was drilled Nov. 16 to 19, 2020. The core logs from Bru wells 121 and 141 near Ross MB and St. Anne were taken from historical core log storage in Steinbach. The core boxes shown in the photographs in the CWS hydrogeological study are not air tight. Well records obtained from MB groundwater show well Bru 121 was completed on Feb. 19, 2019. The core logs from Bru 121 well would have been exposed to oxidation since this time. The well records for BRU-146 were not obtained from MB groundwater however since the core logs were kept in the storage in Steinbach the samples would have been exposed to oxidation over a period similar to Bru 121.

A report by PetroWiki⁹ calls for sealing of dry core samples in air tight cans or tubes and core samples in anaerobic jars or polycarbonate, steel, glass, or PVC containers with brine, oil, or other fluids.

Claim Post Resources used a sonic borehole technique to collect sand samples at Wanipigow. The 2014 NI43-101 technical report for Wanipigow documents that the extracted sand was immediately placed in air tight containers upon extraction and sent by closed custody for immediate analysis. The analysis of the protected Wanipigow sand showed 0.235 % sulphide and an NP/AP (neutralizing potential to acid potential) ratio of 0.73 In acid base accounting an NP/AP ratio of less than one that indicates large acid drainage potential.

Electron microscope pictures in the NI 43-101 report at Wanipigow show marcasite a form of pyrite (iron sulphide) coating of the sand grains consistent with the laboratory analysis showing sulphide.¹² A report by Schieber and Riciputi (2005) describes the diagenesis of marcasite in the sandstone over the entire Winnipeg formation. This report also shows electron microscope pictures of marcasite coated sand grains. The samples were taken in the western portion of the Winnipeg formation however the presence of marcasite at Wanipigow verifies that the marcasite formation occurred through the entire Winnipeg formation. The CWS hydrogeological report does not mention the documented occurrence of marcasite in the sand of the Winnipeg formation and the results from Wanipigow. The sand samples taken and analyzed for the CWS hydrogeological report were compromised so that marcasite would have been oxidized and washed away in the outdoor stockpiles.

The stated date of sampling of Bru 95-8 well core was Nov.11, 2020. The analysis date at ALS labs was Jan 5, 2021. The ALS lab reports showed all samples were received on LDPE bags. According to a paper published by Donald et al. (2016) reported in the PMC US National Library of Medicine, National Institute of Health,¹¹ the LDPE bags used for the CWS samples are not air tight. Air oxidation through the bags would have occurred from the sampling date to the analysis date. The core samples for BRU 121, 141 stored in Steinbach in non air tight boxes were exposed to air oxidation for at least one and one half years before the

sampling date. All sand samples were exposed to weathering over a similar period. The ALS reports showed that many samples the analysis date was beyond the recommended time period between sampling and analysis. This information conclusively demonstrates all the geochemical samples analyzed were compromised.

Question:

Will CWS have representative sampling redone and resubmitted by independent experts to ensure the samples are properly handled and sealed in air tight containers immediately upon extraction? Will CWS ensure the sand samples are not exposed to air during extraction and immediately sealed in air tight containers?

4. Carman sands

The CWS hydrogeological report states;

“CanWhite intends to develop and operate an in-situ sand extraction operation in southeastern Manitoba, and approximately 35 km east of Winnipeg. It will involve extraction of sand resources of the Carman Sand Member of the Winnipeg Formation for commercial and industrial use.”

“Black shale is present as part of the Black Island Member of the Ordovician-aged Winnipeg Formation. This unit was typically deposited on top of the Winnipeg Formation, but is not present within the Project Area. a. It is typically composed of up to 50% pyrite nodules, which are rounded, equant to elongate, concentrically layered and 0.5 mm to 1.0 mm in diameter (Lapenskie 2016)”

“Shale from the Project Area were below average crustal abundance criteria, and concentrations were typically one to two orders of magnitude lower than those in Black Island Shale. This clearly indicates that the Winnipeg Shale found within the Project Area has metals concentrations that are significantly lower than the Black Island Shale.”

“The Winnipeg Formation has been subdivided into stratigraphically distinct units with subdivisions generally consisting of a lower sandstone unit (Black Island Member) and overlying units consisting of sandstone and shale layers (Icebox Member). A third unit (Carman Sand Member) is a clean very-fine-to-medium-grained sandstone zone that is up to 30 m thick in the upper portion of the Winnipeg Formation in Southeastern Manitoba. This feature extends from south of Brandon, Manitoba to the subcrop below the Sandilands Area (Ferguson et. al. 2007). CanWhite drilled over 40 boreholes between 2017 and 2020 to characterize local lithology and inform a Preliminary Economic Assessment (Stantec 2019). They found the Carman Sand Member was typically uncemented, well sorted, well rounded, and fine- to medium-grained, with a consistent thickness ranging from 20 m to 30 m.”

The above quote states the Carman Sands are below the Sandilands area. Figure 4 shows the Carman Sands as determined from the Manitoba Energy and Mines Bedrock Geology Compilation Map Series ¹³ overlaid on the CWS 24 year Project area. Figure 4 clearly shows only very southern portion of the project area is within the Carman sands.

According to the report by Watson, Economic Geology, ¹⁴ that was recommended in the expert peer review by Friesen states,

“A thickened portion of the upper part of the Winnipeg sandstone near Ste. Anne was tested for possible mining by hydraulic methods. This unit, known as the Carman sand body, varies in thickness and extent. It is

generally about 27 m thick and extends westward from Ste. Anne for about 240 km to Ninette. It ranges in width from 24 to 100 km (McCabe, 197B). The sand in this body is similar to that in the lower Winnipeg at Black Island. It is a separate body, however, and is separated from the rest of the sand section elsewhere by shale rich rocks. The body is probably a former offshore bar and the increased thickness of the Winnipeg section is due to the compaction of the sandstone being less than for the shale-rich sections elsewhere. In 1966, the deposit was drilled in the area east of Steinbach (Fig. 13) by Norlica Minerals Limited (Underwood McLellan and Associates Limited, 1967). The drill holes intersected silica sand intermixed with shale, with high quality sand beneath the upper sand-shale layer. The sand ranged from loose to well cemented. Various methods were tried to loosen the sand, including water jets, suction and a mechanical cutter, in order to pump it from drill holes. These methods were unsuccessful largely due to the presence of hard sandstone and shale layers within the section. The hard layers could not be broken and thereby prevented slumping and breakup of the sand layers between them.”

Thus even the lower portion of the Carman Sands in the southern portion of the claim area is interbedded with shale that is likely rich in pyrite.

Questions:

Does CWS acknowledge the northern part of the BRU project area is wholly within the Black Island member part of the Winnipeg formation known to contain pyritic shale, marcasite coating the sand, pyritic concretions such as oolite layers and not within the Carman sands area?^{10,12,14,15} Does CWS acknowledge that the Black Island member from which sand will be extracted in the northern portion of the Bru area contains pyrite that will be exposed to re-injected aerated water that will form acid and mobilize heavy metals and selenium thereby contaminating the aquifer?

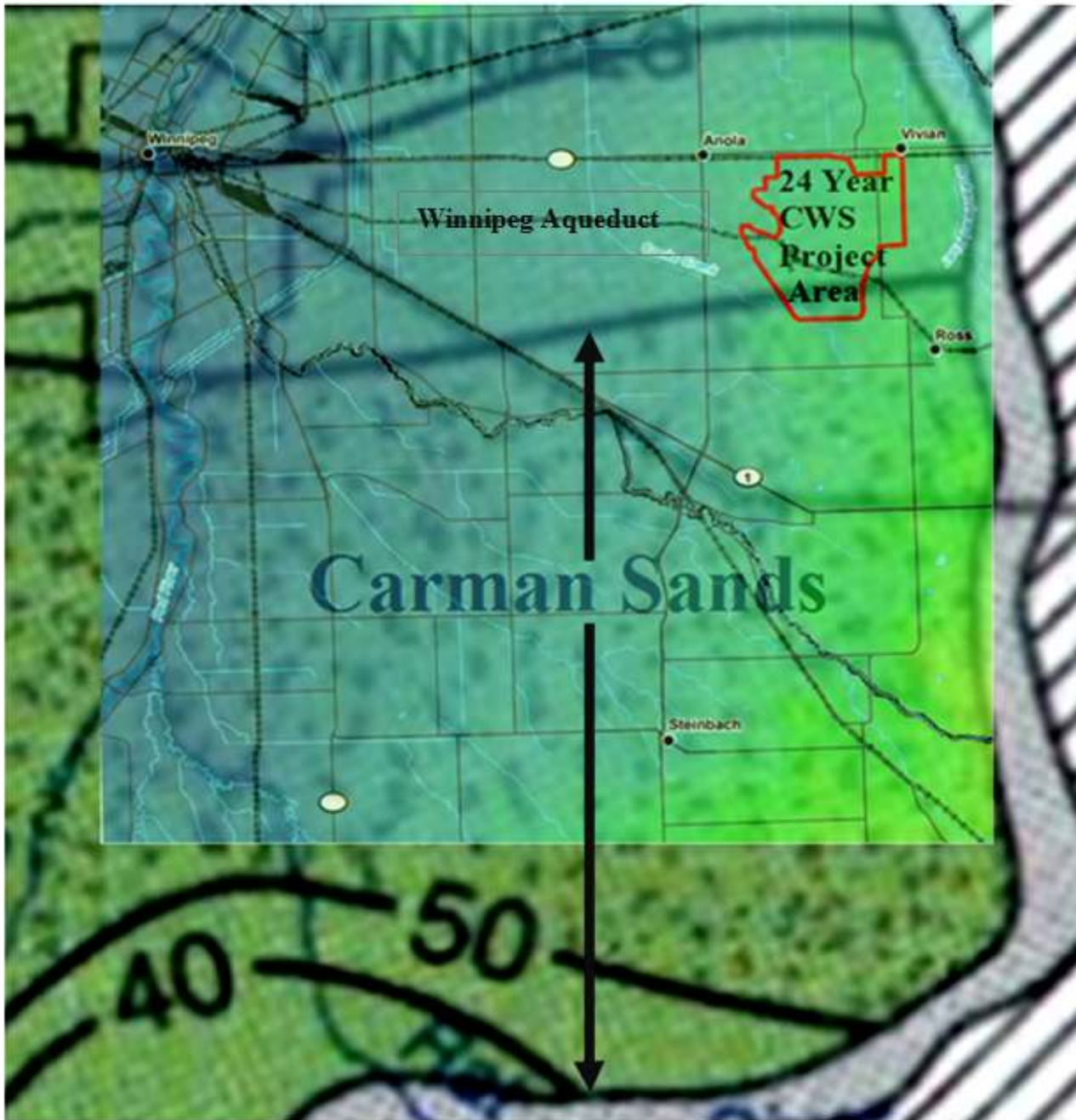


Figure 4. CWS 24 year project area overlaid on the map of the extent of the Carman sands (green speckled area) south of Vivian MB.

5. Geochemical Analysis

The geochemical analysis of samples taken from well cores Bru 95-8, Bru 121-1 and Bru 146 and sand samples from the Winnipeg aquifer were not protected against oxidation by air. Nevertheless some samples showed substantial arsenic, selenium and aluminum concentration. The acid base accounting test to determine the potential for acid formation from sulphide were also compromised however the results were inconclusive. CWS conclude that the shale should be considered as potentially acid generating (PAG).

Figure 4-2 shows a scatter plot of wt% total sulphur versus sulphide indicating that the sulphur content was dominated by sulphate. This is consistent with the oxidation of the samples where the sulphide concentration would be oxidized to sulphate. If the sulphur were originally sulphide before oxidation the original sulphide concentrations would be many times higher. This means that the total acid potential will be underestimated and that the NP/AP ratios determined by the CWS analyses are too high.

The core logs obtained by MB groundwater throughout the Bru all show shale layers at various depths below the extractable sand layer. This is confirmed by figure 2-A of the hydrogeological report that shows a shale layer at the base of the sand layer in the Winnipeg formation. No samples were taken and analyzed of these lower shale layers. Aerated re-injected water would be in contact with these lower shale layers from the Black Island member known to contain pyrite. Oxidation of the pyrite in these lower shale layers would create acid and mobilize heavy metals contaminating the aquifer.

The hydrogeological report also documents concretions that will be screened from the sand. The paper by Schrieber and Riciputi (2005)¹⁰ states;

“Throughout the Black Island Member we find irregular iron sulfide concretions that follow burrow trails. They consist of a mixture of pyrite and marcasite in clusters and coarse aggregates with rounded quartz grains ‘floating’ in the sulfide matrix.”

This illustrates the concretions will contain large amount of sulphide and be acid generating. The concretions were not sampled and analyzed by CWS.

Another form of concretions, documented by Watson to lie in layers in the Winnipeg Formation, is oolite nodules containing pyrite.¹⁴ Photographs of the oolite nodules found in extracted sand piles near Vivian are given in my report of August, 2020 submitted for the public review of the Vivian Sand Processing Plant. There is no doubt that these pyritic oolite nodules documented by Watson are found in the Vivian area.

According to the hydrogeological report two of the three samples in the Red River Carbonate and one sample in the shale exceeded screening criteria for selenium. Selenium is commonly found absorbed in sulphide minerals.⁸ Oxidized selenium (selenates) are very soluble and toxic to aquatic organisms and humans.^{7,8} The concentrations of selenates in the samples are consistent with oxidation from selenium in pyrite in the samples and are consistent with the samples being compromised by oxidation by air.

The selenium in the shale in the aquifer will be exposed to re-injected aerated water. The selenium will be oxidized to form soluble selenates that will contaminate the aquifer.

The ALS reports show all three shale samples for Bru 121-1 Bru 146 and Bru 95-8 having high As (arsenic) concentrations of 20.4, 13.3, and 24.2 ppm respectively despite the air oxidation that would create acid that could leach out As. Properly protected core samples would likely show even higher concentrations of arsenic. Given that the maximum allowable concentration of As in water is 0.01 ppm, these high As concentrations along with the evidence for acid generating pyrite in the shale represents a severe risk for As contamination not only of extracted samples but more importantly of the aquifer. The re-injected aerated water would cause the formation of acid from sulphide in the shale, and sand (marcasite), sand concretions, and oolite that would mobilize the arsenic.

Proper re-sampling to protect against air exposure and oxidation is likely to reveal the presence of selenium associated with the pyrite in the samples.

Questions:

Will CWS engage an independent expert to gather core samples and sand samples from representative locations in the Bru area that will be protected against oxidation and have the samples re-analyzed?

Will CWS have properly protected samples of lower shale, concretions and oolite nodules analyzed? If the re-testing demonstrates that the samples contain significant amounts of sulphide and heavy metals that will likely contaminate the aquifer when the cavities are filled with re-injected aerate water will CWS abandon their operations in the Vivian area?

6. Numerical Groundwater Model

The CWS hydrogeological study in the numerical groundwater section states;

“It was beyond the scope of this assessment to develop a water balance for the regional aquifer system in the context of existing and future groundwater use. The numerical groundwater model assesses the short-term response of the aquifer to the stresses of groundwater and sand withdrawal. Streams, lakes, regional groundwater use and groundwater levels along the boundaries of the model domain are assumed to stay constant with time.”

“Scenarios 1 and 2 assess the possible range of re-injection of groundwater after solids are removed from the production fluid (0% and 50% of slurry volume re-injected) from the sand extraction process. These scenarios that consider the reinjection of all groundwater are presented for comparative purposes only and note that the hydrogeological assessment is based on a hypothetical conservative scenario involving zero reinjection of water. CanWhite does not intend to discharge any water to ground surface. The Winnipeg Shale is inferred to be considerably weathered and assumed to degrade (increased hydraulic conductivity) in Scenarios 1 and 2 when locally disturbed/unsupported from below due to extraction of the Winnipeg Sandstone.”

Even though CWS claims that no discharge of water will occur from their processes, water will be lost from the aquifer in the 15% water retained in the sand stock piles at the processing plant as described in the EAP for the Vivian Sand Processing Plant. In addition water will be removed with the carbonate and shale drill cuttings and from the concretions that are separated out at the extraction site by vibrating screens. The volume of such waste and the entrained water in the waste is not determined in the CWS hydrogeological report. The groundwater model does not determine the sustainability of the groundwater removal from the aquifer. This should be an essential feature. A study by Kennedy and Woodbury (2005) determined by 2025 the sandstone aquifer would be beyond sustainable water use due to growth alone.¹⁶ Extra draw on the aquifer from the CWS operations are likely to be unsustainable.

Questions:

Will CWS determine the total withdrawal of water from the aquifer from all sources including water retained in the sand stockpiles and in all waste streams including waste from vibrating screens and drill cuttings at the extraction site? Will CWS determine the affect of these withdrawals on the sustainability of the sandstone aquifer?

The numerical model used for the groundwater study does not evaluate the actual operational activities of the extraction. The modelling only details with hypothetical situations where 50% and 0% of the water withdrawn from the aquifer is re-injected. These scenarios will not occur as, according to CWS, no water will be discharged by the project.

During the sand extraction as shown in figure 2-A of the hydrogeological report water is re-injected near the top of the aquifer through the exterior tube of the well pipe and sand plus water moves up the central tube further down in the aquifer at the bottom of the well pipe. At the bottom of the pipe the fluid pressure will be less than the surroundings. Where water is injected near the top of the reservoir the fluid pressure will increase from the injection.¹⁸ Water in the aquifer will flow from high fluid pressure to lower. Some of The re-injected water will circulate toward the bottom of the extraction well pipe where the fluid pressure is lower.

In the hydrogeological report it is admitted the shale layer separating the aquifers is compromised by the pumping activities and the creation of a cavity such that the shale is unsupported. The calculations in the report of February 2021 reviewed by Dr. Ingraffea demonstrate the shale will slake into the cavity created. The carbonate aquifer will be directly exposed to the sandstone. In the far-field of the carbonate aquifer the fluid pressure will be lower than at the re-injection site. Some of the re-injected water will flow into the carbonate aquifer. The carbonate aquifer has a higher transmissivity than the sandstone so water will preferentially move into the carbonate aquifer. The re-injected water will be aerated and react with sulphide in the shale aquitard, with the shale layer lower in the formation, with sand concretions and oolite nodules, and with the marcasite of the sand to form acid and release heavy metals. Selenium measured in the geochemical analysis will be oxidized to a soluble form contaminating the aquifer. Microbes that survived the ineffective UV treatment will be able to proliferate in the aerated water in the sandstone cavity. All these sources of contamination will be able to migrate in the carbonate aquifer driven by the high pressure zone for re-injection. This simultaneous reinjection of water and withdrawal of sand and water in the air lift extraction tube of the well was not modelled.

The scenario of re-injected water entering the carbonate aquifer is consistent with the complaint of brown water in a well nearby where CWS was extracting sand at Centre Line Road near Vivian MB. The brown water occurred only at the time of CWS sand extraction. This incident is documented and analyzed in the What the Frack Manitoba February 2021 report.²

The effects of CWS re-injection should be comparable to the effect of waste water injection into a limestone aquifer in Florida. Calculations for the Florida injection indicate that by mid-1974 pressure effects from waste injection extended radially more than 40 miles (64 km) from the injection site.^{18,19} The contamination induced in the aquifer from aerated re-injected water could be expected to reach the discharge of the carbonate aquifer to the Red River and Lake Winnipeg in just a few years. The contaminated discharge to hydraulically connected streams of Cook's Creek and the Brokenhead River would be much sooner. Contamination would spread north westward through the carbonate aquifer along the discharge path.

Questions:

Will CWS model the simultaneous re-injection and water plus sand removal to obtain meaningful groundwater flow results for the CWS extraction process? Will CWS model the migration of contaminants formed in the sandstone aquifer through the degraded shale aquitard and through the carbonate aquifer?

7. Mixing of aquifer waters

The hydrogeological study admits that the aquitard preventing the mixing of aquifer waters could be compromised. The What the Frack report of February 2021² peer reviewed by Dr. Ingraffea determines that the shale layer will slake into the cavity created by sand extraction. The hydrogeological study attempts to down play the consequences of mixing of aquifer waters. In the area where the flow regime will be from the carbonate to the sandstone, iron and likely hardness are expected to increase but not to a harmful extent.

A group of residents near Vivian have already filed a formal complaint with Manitoba Water about increase in iron in their well water and other detriment since CWS exploration drilling activities in the area. Obviously the residents do not accept such changes to their water. The complaints of the residents were not investigated and summarily dismissed by the Director of MB Water stating that iron has been found historically in the well water. However mixing of aquifer water, even if not harmful, is not allowed according to the Groundwater and Water Well Act regulations.¹⁷

Question:

Will CWS respect the regulations of the Groundwater and Water Well Act and terminate plans to extract sand in the Vivian area where mixing of aquifer waters cannot be avoided with the CWS extraction methods.

8. Well Seals

The EAP states that all the hundreds of wells drilled per year will be sealed according to government regulations. The hydrogeology study admits that the shale layer could be compromised by the excavation activities. Spalling of the shale into the excavation cavity would compromise seals across the shale aquitard. The limestone thickness in the eastern Bru area is below the minimum thickness to prevent subsidence as specified by the EAP according to Stantec studies that were not available. The limestone thickness over the entire Bru area is insufficient for limestone stability according to a report by Waltham and Fookes (2003)¹. Instability in the limestone will compromise all the well seals in the carbonate aquifer. Subsidence of the till into the extraction cavity in the sandstone described by the USGS will compromise the till seals.³ Massive seal failure in the hundreds of CWS wells drilled per year would result in serious aquifer contamination from surface run off carrying chemicals and microbes such as fecal coliform from septic fields and animal feces.

Question:

How will CWS prevent well seals from failing due to subsidence that has been demonstrated will assuredly occur?

9. Accidents and Malfunctions

CWS admits the possibility of slurry line failure and leakage. The EAP states;

“An accidental release of slurry or return water may also occur if a break or crack occurs in the slurry and/or water return line. Accidental releases, depending on the type and quantity of substances released, have the potential to affect air, surface water, groundwater and soils, with consequential effects on vegetation, aquatic resources and possibly human health and safety. Slurry and water return line will be inspected on a daily basis, and after extreme weather events, to check for leaks and/or breaks in the line. If leaks or breaks in the line are detected, appropriate spill containment and clean-up measures will be applied as soon as feasible and the line will be repaired or replaced.”

The slurry line and water return lines are specified to have a maximum flow rate of 24 cubic meters per minute in the EAP for the processing plant. A slurry line break would cause a massive spill far beyond the capacity of any spill containment measure. With only daily inspections a slurry line break could discharge for hours before detection. No automated leak detection and pump shut down system is specified in the EAP. Slurry line wear due to the abrasive nature of the sand is common. An external inspection will not reveal such wear.

Literature studies on sand erosion of HDPE pipe indicate wear of the order of 20 mm per year can be expected. Curves and joints are particularly susceptible to wear.²⁰ Using the relationship that the flow rate of the line is the product of the interior area and the fluid velocity, using the 24 cubic meters per minute flow rate specified in the EAP for the processing plant, the flow rate for the main 14 inch slurry line is estimated to be 6.11 m/s. An article in the Oil Sands Magazine states,²¹

“An absolute maximum flow of 6.0 m/sec is normally tolerated, but only on a very infrequent basis. Since slurry lines are prone to sanding, guidelines for minimum slurry velocities are normally established in order to prevent sanding. A typical normal minimum is 3.0 to 3.5 m/sec.”

This evidence illustrates slurry line wear and subsequent failure is very likely.

The joints connecting smaller slurry lines to the main 14 inch slurry line may be particularly susceptible to wear.

A presentation by Dacon technologies state,²²

“Since mines started using HDPE lines for Tailings transport, erosion in the bottom of these lines have been an issue.”

For 85 mm HDPE pipe the erosion rate was about 3 mm/month and for 110 mm HPDE pipe the erosion rate was up to 11 mm month. Dacon technologies describe inline inspection and automated leak detection methods.

A paper by Burn et al. 1998 reports an annual breakage frequency of HDPE water pipe in Australia of about one per 12.5 km. Breakage rate in a slurry line would be expected to be much greater.²³

As described in a submission for the French drain alteration posted on the Manitoba EAB Public Registry 6057 on April 8, 2021, soluble contaminants such as iron, arsenic, selenium and the highly toxic acrylamide monomer will continually build up in the slurry and return water line. A spill would release these toxins to the environment. A large spill would migrate into the Brokenhead River or Cook's Creek. Contaminants could penetrate the carbonate aquifer through permeable aggregate cover and quarry excavations. Continued use of this water for a 24 year period with the use of over winter storage tank is simply untenable. CWS does not acknowledge the need for treatment of this recycled water to remove contaminants and resupply with fresh water. No plan is made for the waste steam that would be generated.

Questions:

Will CWS install leak detection on their lines with automated pump shut down? Will CWS use interior wear inspection tools at regular intervals to determine the extent of slurry line wear? Given that contaminants will continually build up in the slurry and recycle water lines, will CWS develop and supply a recycled water treatment and associated contaminant waste generation plan?

10. The Winnipeg Aqueduct

As illustrated in figure 4 the Winnipeg aqueduct traverses the entire 24 year CWS project area. The slurry lines will eventually have to cross the aqueduct likely multiple times. The aqueduct is known to have cracks that allow infiltration of surface water.²⁵ Slurry line spills near the aqueduct could contaminate Winnipeg's drinking water supply with arsenic, selenium, other heavy metals and the highly toxic acrylamide monomer.²⁴

Questions:

Has CWS informed the City of Winnipeg of the requirement of the slurry lines to cross the Winnipeg Aqueduct and described safeguards that will mitigate the potential for contamination of the aqueduct water? Has CWS obtained a legal agreement with the City of Winnipeg and the Government of Canada to cross the aqueduct considering that the aqueduct crosses provincial boundaries and is therefore federal in scope?

11. Section 35 Indigenous Consultations

The project will have a devastating impact on the traditional lands of indigenous peoples in the 24 year CWS project area. On average 56 well clusters per year with a diameter of 54 meters will be cleared. Slurry lines will be cleared between the clusters that are 60 meters apart. The slurry lines will be moved every 5 to 7 days requiring use and movement of vacuum trucks. The evidence presented here illustrates that large sinkholes will develop that could contaminate the aquifer with bacteria and chemicals in runoff. The sinkholes will cause a permanent destruction of traditional land and natural drainage. Large spills from the slurry and return water lines are to be expected. The spills will carry contaminants such as arsenic selenium and toxic acrylamide that will drain into nearby water courses such as the Brokenhead River destroying fish and fish habitat. The contaminants will be carried downstream.

Question:

Will CWS immediately ensure that the Crown undertake comprehensive section 35 consultations with the affected First Nations and Métis?

The consultations must proceed before licensing is complete.

12. Noise

The EAP states;

“Noise generated by Project activities (e.g. extraction well drilling; operation of vehicles and machinery such as pumping stations) has the potential to adversely affect wildlife (Section 6.5.2) and could result in nuisance noise to people living within the Local Project Area. Project components expected to generate noise that may contribute to noise levels at the nearest points of reception (e.g. nearest residence, i.e. 133 m from a well cluster area) are listed in Section 2.8. Example noise sources associated with Project activities include mobilization of extraction well drilling equipment, drilling of wells and operation of pump stations. The following measures will be implemented to reduce noise generated from Project activities: • Vegetation clearing will be minimized to the extent feasible. • Project activities will setback a minimum of 100 m from nearest residences. • Mobile equipment and vehicles will be kept well maintained and will be fitted with mufflers, and other noise mitigation equipment as required. • Unnecessary idling and revving of engines will be avoided. • Additional noise mitigation measures will be applied (e.g. portable noise barriers) as required. In consideration of the above measures to minimize noise levels due to Project activities, it is anticipated that potential noise levels at the nearest residences will be adequately attenuated. Noise disturbances to wildlife are expected to be moderate in the vicinity of Project activities but are not expected to measurably affect wildlife populations within the Interlake Plain Ecoregion within which the Project is located.”

The EAP does mention compressor noise. The mitigation measures such as portable noise barriers are not adequately explained. No actual noise measurements have been made and reported.

Currently as of Aug.18, 2021 CWS drilling and sand extraction activities are occurring in a quarry site south and west of Vivian as shown in figure 5. The local residents have been complaining of excessive noise. The sand piles are uncovered. Local residents have noticed dust blowing from the sand piles. Drillers and quarry workers and nearby public are likely exposed to silica dust.

Question:

Will CWS record and report noise levels of such quarry operations and take adequate measures to avoid exposure to silica dust in such operations?



Figure 5. CWS sand extraction activities in a quarry site near Vivian MB Aug. 18, 2021

13. CWS Vivian Railway Yard

The CWS Extraction EAP states;

“The sand Processing Facility and associated infrastructure, including the rail loop and interconnection with the existing Canadian National Railway, are being reviewed by Manitoba Conservation and Climate (MBCC) as a separate project requiring a separate Environment Act Licence to proceed. Therefore, the Processing Facility and associated infrastructure components are not assessed within this Environment Act Proposal.”

The CWS railway loop, railway yard and load out facilities are intimately connected to the Project and will have cumulative effects such as noise, vibration and drainage that will interact with the Processing Plant and extraction noise vibration and drainage. In order to properly account for cumulative effects the projects must be assessed together.

We are not aware of a separate licence process for the CWS railway yard and CN railway spur line connection.

Questions:

Will CWS explain the timeline for the CWS Vivian railway licensing process and the necessary technical and public review process?

Will the CWS Vivian railway yard and loop and the CN spur line require a certificate of fitness and approval by the CTA? Will CWS follow the CTA guidelines for approval to construct a railway line including the following;²⁶

“Before you submit your line construction application, you are expected to engage the people in the localities (communities and others as described in the Key terms below) that would be affected by the proposed line. You should use this engagement process to:

- discuss the proposed railway line and understand what impacts its construction and operation would have, whether negative or positive; and*
- identify appropriate measures for addressing localities' concerns.*

You are expected to engage the Indigenous groups and peoples your proposed line could affect. Their views and concerns are part of the interests of the localities that the CTA will consider when assessing the application. Be sure to document all engagement results and include this documentation in your application

Once you have identified relevant localities, including any Indigenous peoples, you are expected to discuss the proposed railway line with the appropriate municipalities and other government bodies. The purpose of these discussions is to help you identify:

You should use a variety of methods to promote your engagement activities to a broad range of stakeholders within the localities. For example, you could:

- request that the municipalities post a public notice on their websites;*
- broadcast a notice with local radio stations;*
- place a notice in local newspapers;*
- place a notice of the planned information sessions on the bulletin boards of public buildings, community halls, social organizations and service clubs;*
- advertise the information sessions within the newsletters and websites of local associations and service clubs;*
- use various social media platforms such as Twitter, Facebook or other internet sites or mobile applications;*
- include information in material distributed by municipal counsellors to their constituents; and/or*
- directly contact persons who will be affected (for example, by hand-delivering notices to relevant businesses and residences).*

Include maps and plans that are made to scale, labelled, include a north arrow, and have a comprehensive legend that defines the symbols used.

- Maps should depict the location of the proposed railway line and associated infrastructure in relation to their geographic surroundings.*
- Plans should capture all of the geometric features of the proposed railway line and other important railway line components and be prepared and dated by a qualified engineer.”*

15. Traffic

Questions:

Will CWS specify the size and number of trucks per day required to transport the screened out waste such a concretions and the drill cuttings from the extraction area to the licensed disposal site? Will CWS identify the licensed disposal site?

16. Licensing

The CWS Extraction EAP states,

“CanWhite is currently applying for an Environment Act Licence for extraction activities up to and including 2025 because advancements in extraction methods and operations are expected to increase efficiency and reduce overall footprint after 2025. This will be explained in subsequent Notices of Alteration for the future potential extraction years, with the information and review process for Notices of Alteration of an Environment Act Licence for the Project being as required under Section 14 of The Environment Act. Therefore, the scope of this Environment Act Proposal is limited to the proposed activities and Project spatial extent up to and including 2025.”

Any project alterations such as slurry line crossing of the Winnipeg Aqueduct after 2025 could be considered as minor alterations and thus avoid public and TAC technical review.

Question:

Will CWS in the interest of transparency and proper independent technical review of any future Project alterations apply for a license for the full period of 24 years and include all anticipated future alterations in the current EAP?

17. Missing reports

The following reports that are not yet produced provide critical information required for the approval process. The mine closure plan is especially important and under the Manitoba Mines and Minerals Act should have been filed by CWS before the commencement of advanced exploration activities.

Waste Characterization and Management Plan
Water Management Plan
Progressive Well Abandonment Plan
Erosion and Sediment Control Plan
Groundwater Monitoring and Impact Mitigation Plan
Mine Closure Plan
Re-vegetation Monitoring Plan
Emergency Response Plan
Heritage Resources Protection Plan
Stantec Reports

Question:

Will CWS produce the above follow up plans as part of the EAP?

References

1. Speleogenesis and Evolution of Karst Aquifers The Virtual Scientific Journal ISSN 1814-294X Engineering classification of karst ground conditions, republished from : Quarterly Journal of Engineering Geology and Hydrogeology, 2003, vol. 36, pp. 101-118. A. C. Waltham and P. G. Fookes https://digital.lib.usf.edu/content/SF/S0/05/46/71/00001/K26-04222-seka_pdf4513.pdf
2. Evidence for Aquifer and Slurry Line Contamination and Land Subsidence From Vivian Silica Sand Extraction Wells, D. M. LeNeveu, March 2021 <https://www.flipsnack.com/7CDD5666AED/canwhite-sands-extraction-method-and-potential-impacts.html>
3. USGS Water Science School, Sinkholes, https://www.usgs.gov/special-topic/water-science-school/science/sinkholes?qt-science_center_objects=0#qt-science_center_objects
4. Government of Western Australia Department of Health Ultraviolet disinfection of drinking water, June 27, 2016 https://ww2.health.wa.gov.au/Articles/U_Z/Ultraviolet-disinfection-of-drinking-water
5. Water Research Centre, Drinking Water Treatment with UV Irradiation, Brian Oram, PG., B.F. Environmental Consultants Inc., 15 Hillcrest Drive, Dallas, PA, 18612 <https://www.water-research.net/index.php/water-treatment/water-disinfection/uv-disinfection>
6. The Narwhal Explainer: What the Heck Is Acid Drainage, and Why Is It Such a Big Deal? <https://thenarwhal.ca/author/jimmy-thomson> Jimmy Thomson, Dec 9, 2017 <https://thenarwhal.ca/what-heck-acid-rock-drainage-and-why-it-such-big-deal/>
7. Selenium Oxidation and Release during Washing of Agricultural Seleniferous Soil Samples., American Geophysical Union, Fall Meeting 2019, abstract #H41J-1835 December 2019, Pallud, C. E. , Le Vagueresse, L. M. M., Wasserman, N., Schilling, K., Johnson, T. M., Dhillon, K. S. <https://ui.adsabs.harvard.edu/abs/2019AGUFM.H41J1835P/abstract>
8. Selenium binding to iron sulfides. Clays in natural and engineered barriers for radioactive waste confinement - 4 International meeting Book of abstracts, (p. 1011). France. Finck, N., & Bosbach, D. (2010). https://inis.iaea.org/search/search.aspx?orig_q=RN:46136101
9. Core alteration and preservation From AAPG Wiki from Methods in Exploration, Wellsite methods, Core alteration and preservation, AAPG special Volumes, 1992, Caroline J. Bajsarowicz https://wiki.aapg.org/Core_alteration_and_preservation
10. Pyrite and Marcasite Coated Grains in the Ordovician Winnipeg Formation, Canada: An Intertwined Record of Surface Conditions, Stratigraphic Condensation, Geochemical Journal of Sedimentary Research 75(5):907-920. Jurgen Schieber, Lee Riciputi November 2005 <https://pdfs.semanticscholar.org/c726/0c14eeefc435745019d169ed8f741ed4da6df.pdf>
11. Transport stability of pesticides and PAHs sequestered in polyethylene passive sampling devices, Environ Sci Pollut Res Int. 2016 Jun; 23(12): 12392–12399. Carey E. Donald, Marc R. Elie, Brian W. Smith, Peter D. Hoffman, and Kim A. Anderson <https://www.ncbi.nlm.nih.gov/pmc/articles/PMC4893994/>
12. Technical report and preliminary economic assessment on the Seymourville Silica Sand Project, Manitoba, Canada for Claim Post Resources Inc., NI-43-101 & 43-101F1, Eugene Puritch, P.Eng.,

Richard Sutcliffe, P.Geo., Ph.D., Yungang Wu, P.Geo., David Burga, P.Geo., Jarita Barry, P.Geo., Kenneth Kuchling P.Eng., David Orava, P.Eng., David Anthony, P.Eng., Michael Esposito, P.E., P&E Mining Consultants Inc., Report No. 292, November 1, 2014 sedar.com

13. Manitoba Energy and Mines Bedrock Geology Compilation Map Series - Winnipeg, NTS 62H Bezys R. and McCabe H.R., 1998
https://www.gov.mb.ca/sd/eal/registries/6119/appendix_a_part1.pdf
14. Economic Geology Report ER84-2 Silica in Manitoba By D.M. Watson Manitoba Energy and Mines Geological Services Report <http://www.manitoba.ca/iem/info/libmin/ER84-2.pdf>
15. Activities 2016, Manitoba Growth, Enterprise and Trade, K. Lapenskie, 2016
<https://www.manitoba.ca/iem/geo/field/roal6pdfs/GS-17.pdf>
16. Sustainability of the Bedrock Aquifer Systems in South-Central Manitoba: Implications for Large-Scale Modelling. Canadian Water Resources Journal 30(4): 281-296, Kennedy, P. L. and Woodbury, A.D. 2005.
17. The Groundwater and Water Well Act (c.c.s.m. c. g110) Well Standards Regulation 215/2015, Registered December 21, 2015 Interconnection of geologic formations 3(1)
https://web2.gov.mb.ca/laws/regs/current/_pdf-regs.php?reg=215/2015
18. Monitoring regional effects of high pressure injection of wastewater in a limestone aquifer Groundwater, USGS publications warehouse, Glen L. Faulkner and Charles A. Pascale 1986
<https://pubs.usgs.gov/wsp/2281/report.pdf>
19. Subsurface Injection of Liquid Waste With Emphasis on Injection Practices in Florida United States Geological Survey Water-Supply Paper 2281. John J. Hickey and John Vecchioli
<https://pubs.usgs.gov/wsp/2281/report.pdf>
20. Analysis of Erosion Rate on Discharge Slurry HDPE Pipe in Canal Water Intake PLTGU Grati using CFD Simulation, International Journal of Marine Engineering Innovation and Research, Vol. 2(4), Sep. 2018. 253-260 (pISSN: 2541-5972, eISSN: 2548-1479) 253 Agoes Santoso, Bahrul Ilmi
https://www.researchgate.net/publication/328536374_Analysis_of_Erosion_Rate_on_Discharge_Slurry_HDPE_Pipe_in_Canal_Water_Intake_PLTGU_Grati_using_CFD_Simulation
21. Oil Sands Magazine, Hydrotransport Pipelines: Basic Design Principles
<https://www.oilsandsmagazine.com/technical/mining/hydrotransport/pipeline-design>
22. Dacon Inspection Services HDPE Pipeline Inspection Presentation <https://www.dacon-inspection.com/wp-content/uploads/2016/12/HDPE-Pipeline-Presentation-2016.pdf>
23. Pipe Leakage - Future Challenges and Solutions, Stewart Burn, Dhammika DeSilva, Matthias Eiswirth, Osama Hunaidi, Andrew Speers and Julian Thorton, Pipes Wagga Wagga, Australia 1999
https://www.researchgate.net/publication/44055423_Pipe_Leakage_-_Future_Challenges_and_Solutions
24. Polyacrylamide degradation and its implications in environmental systems. NPJ Clean Water 1, 17 (2018), Xiong, B., Loss, R.D., Shields, D. et al, <https://doi.org/10.1038/s41545-018-0016-8>
<https://www.nature.com/articles/s41545-018-0016-8>

[8#:~:text=The%20presence%20of%20degraded%20polyacrylamide,degradation%20under%20various%20environmental%20conditions.](#)

25. Winnipeg Aqueduct Water-Leakage Repair Winnipeg, MB, Canada Submitted by Vector Construction Ltd. November/December 2013 Concrete Repair Bulletin
<https://cdn.ymaws.com/www.icri.org/resource/resmgr/crb/2013novdec/CRBNovDec13-WinnipegAqueduct.pdf>
26. Canadian Transportation Agency. How to Apply for Approval to Construct a Railway Line: A Guide For Federally Regulated Railway Companies. <https://otc-cta.gc.ca/eng/publication/how-apply-approval-construct-a-railway-line-a-guide>