

Local Study Area (LSA)

ROW by Land Use

- Cultivated
- Woodland

Wetland Class

- Class I - Ephemeral Wetland
- Class II - Temporary Wetland
- Class III - Seasonal Pond or Lake
- Class IV - Semi-permanent Pond or Lake

Watercourse

Road

Pipeline

Well (Surface Hole)

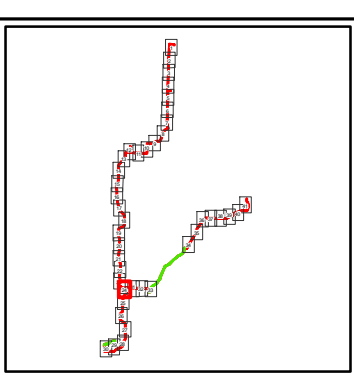
Breeding Bird and Amphibian Surveys

Note: The land use is mapped to ROW

1:4,000 metres

40 0 40 80

NAD 1983 UTM Zone 14N



Matrix Solutions Inc.
ENVIRONMENT & ENGINEERING

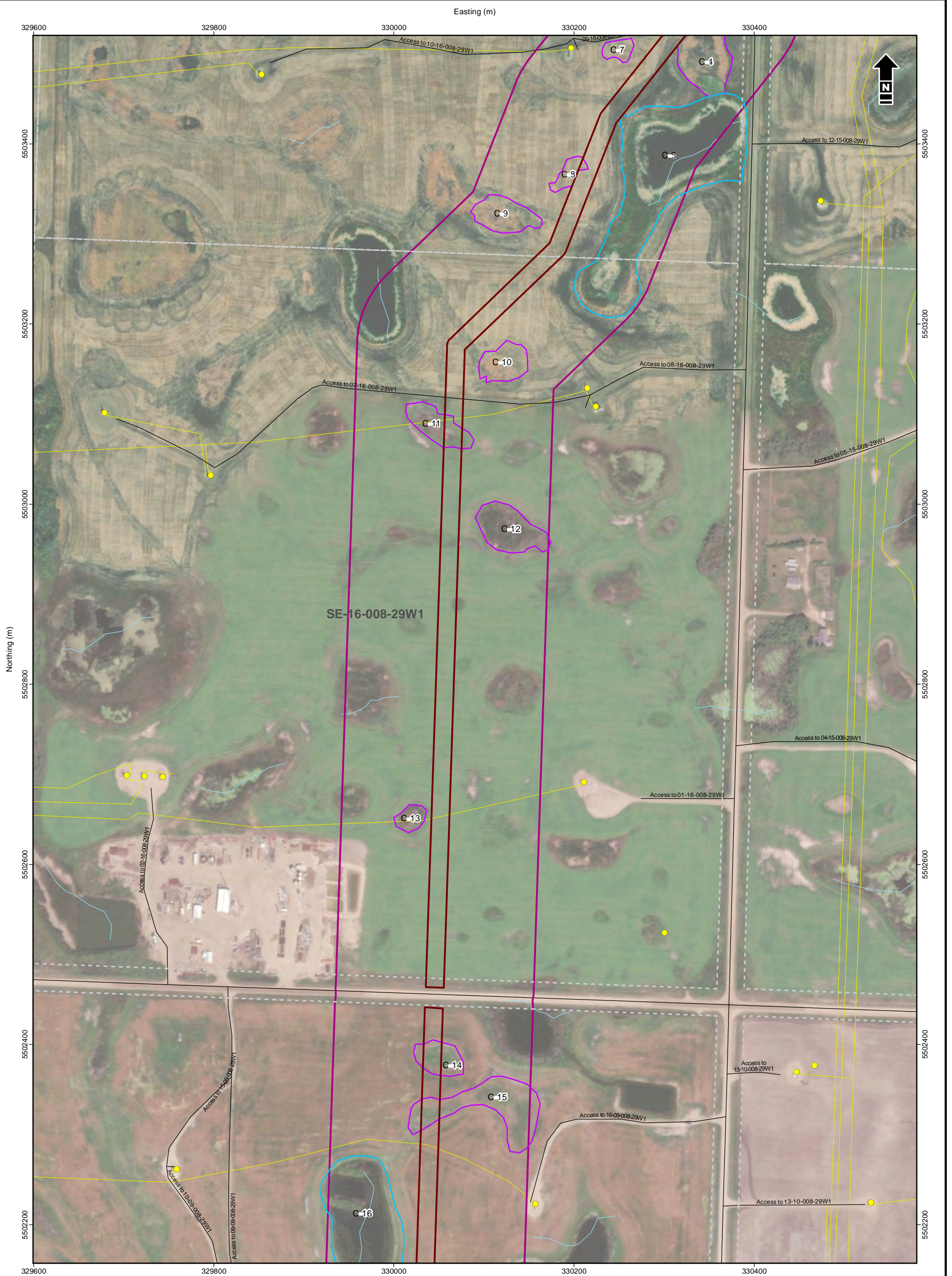
Tundra Oil & Gas Limited
46 km Flowline Gas Gathering System

Detailed Routing

Date: November 2021	Project: 29047	Submitter: D. Chranowski	Reviewer: L. May
---------------------	----------------	--------------------------	------------------

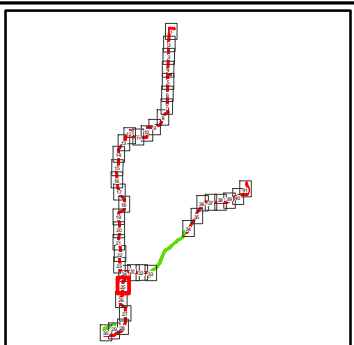
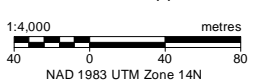
Disclaimer: The information contained herein may be compiled from numerous third party materials that are subject to periodic change without prior notification. While every effort has been made by Matrix Solutions Inc. to ensure the accuracy of the information presented at the time of publication, Matrix Solutions Inc. assumes no liability for any errors, omissions, or inaccuracies in the third party material.

Figure 2-24



- █ Local Study Area (LSA)
- ROW by Land Use**
- █ Cultivated
- Wetland Class**
- █ Class II - Temporary Wetland
- █ Class IV - Semi-permanent Pond or Lake
- ~ Watercourse
- Road
- Pipeline
- Well (Surface Hole)

Note: The land use is mapped to ROW

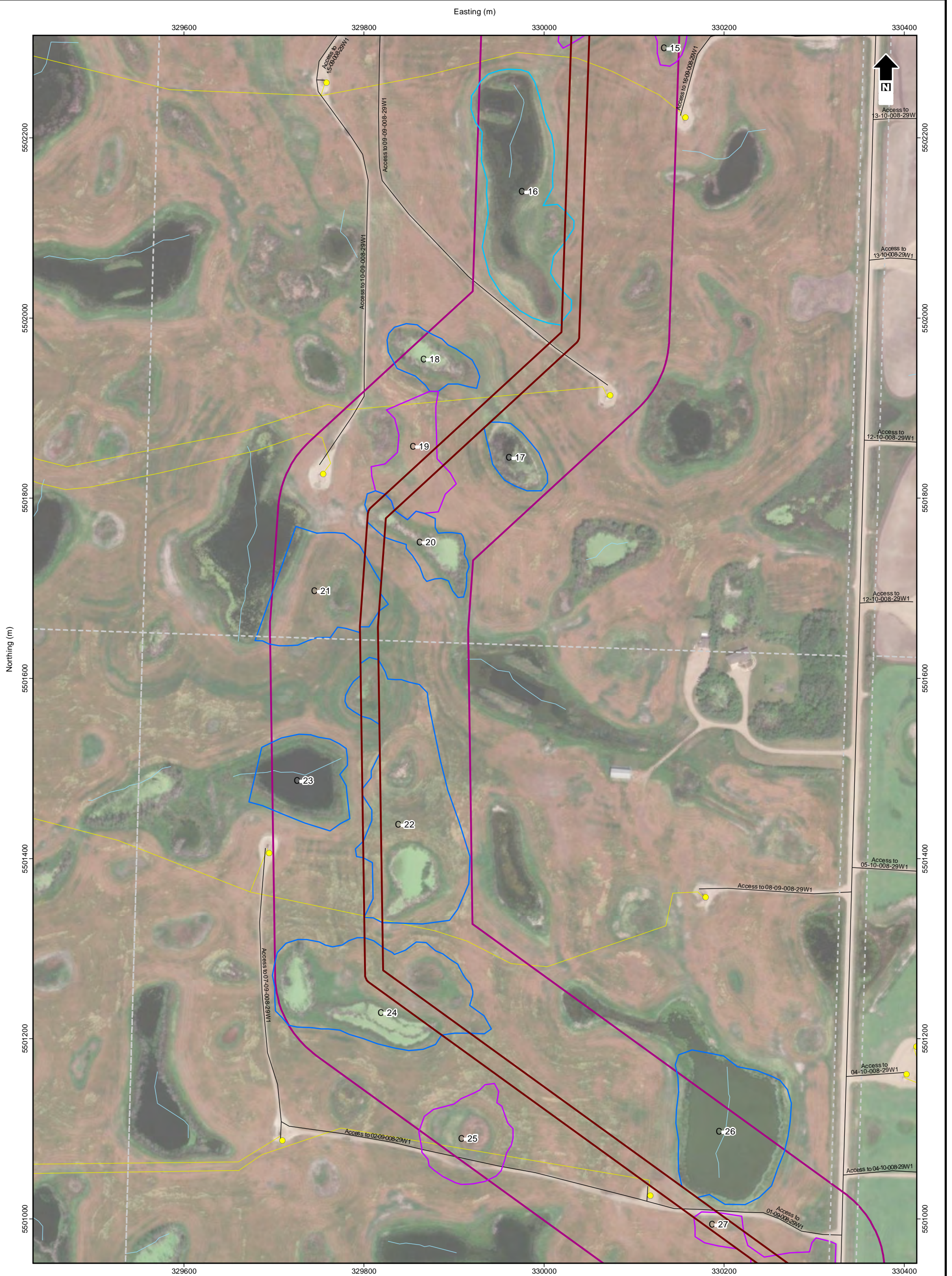


Tundra Oil & Gas Limited
46 km Flowline Gas Gathering System

Detailed Routing

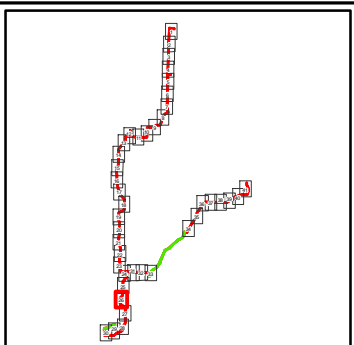
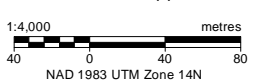
Date: November 2021 Project: 29047 Submitter: D. Chranowski Reviewer: L. May

Reference: GDM midstream, transportation infrastructure data and IHS well data provided by IHS© 2021. Imagery (2018) Source: Esri, Maxar, GeoEye, Earthstar Geographics, CNES/Airbus DS, USDA, USGS, AeroGRID, IGN, and the GIS User



- Local Study Area (LSA)
- ROW by Land Use**
- ▬ Cultivated
- Wetland Class**
- ▭ Class II - Temporary Wetland
- ▭ Class III - Seasonal Pond or Lake
- ▭ Class IV - Semi-permanent Pond or Lake
- ~ Watercourse
- ▬ Road
- ▬ Pipeline
- Well (Surface Hole)

Note: The land use is mapped to ROW

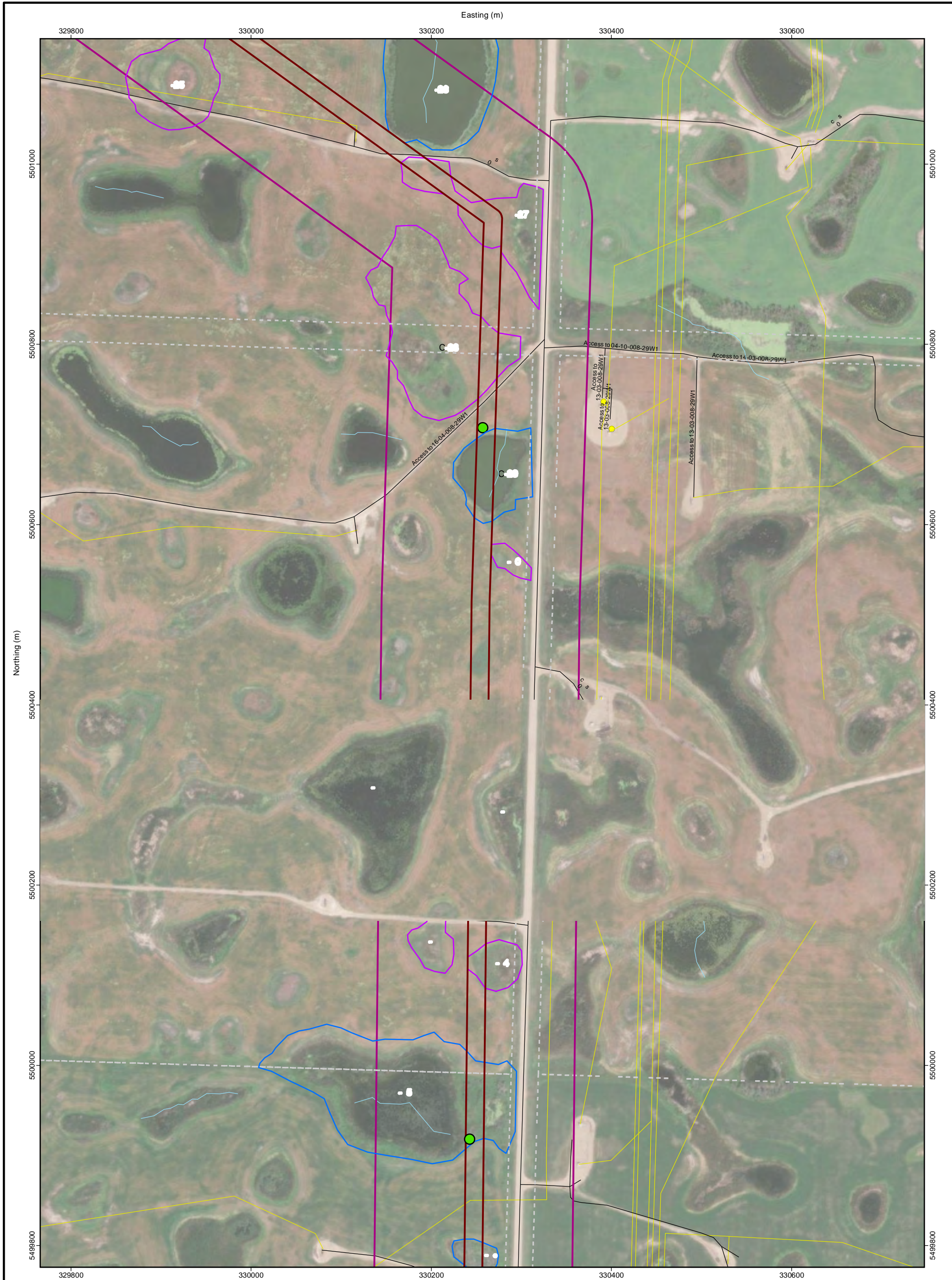


Tundra Oil & Gas Limited
46 km Flowline Gas Gathering System

Detailed Routing

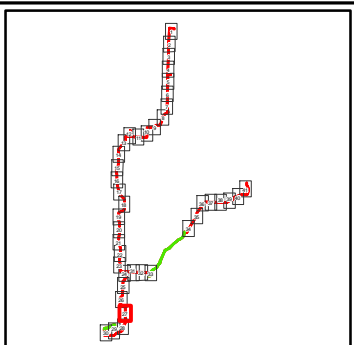
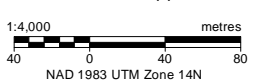
Date: November 2021 Project: 29047 Submitter: D. Chranowski Reviewer: L. May

Disclaimer: The information contained herein may be compiled from numerous third party materials that are subject to periodic change without prior notification. While every effort has been made by Matrix Solutions Inc. to ensure the accuracy of the information presented at the time of publication, Matrix Solutions Inc. assumes no liability for any errors, omissions, or inaccuracies in the third party material.



- Local Study Area (LSA)
- ROW by Land Use**
- Cultivated
- Wetland Class**
- Class II - Temporary Wetland
- Class III - Seasonal Pond or Lake
- ~ Watercourse
- Road
- Pipeline
- Well (Surface Hole)
- Breeding Bird and Amphibian Surveys

Note: The land use is mapped to ROW

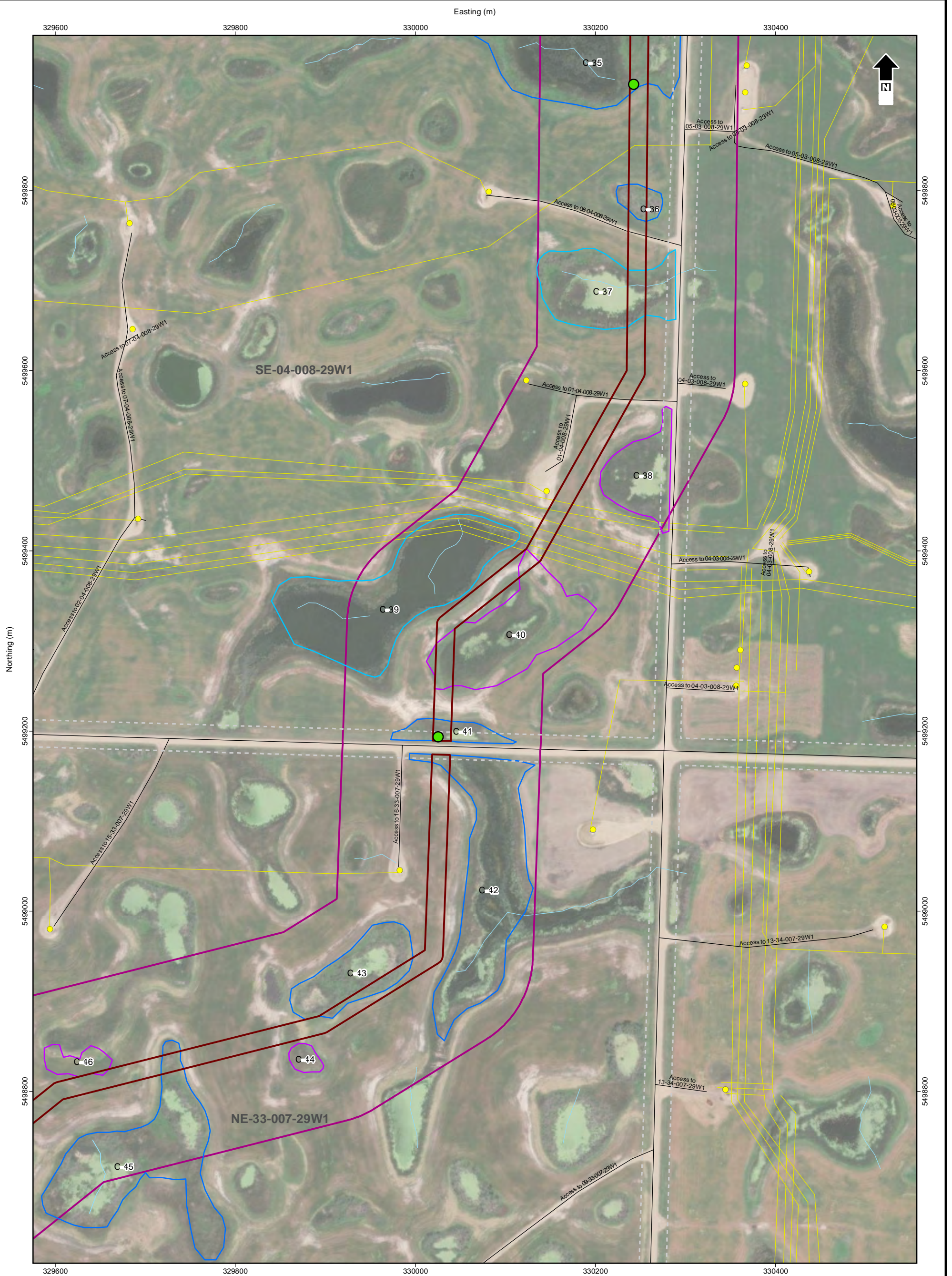


Tundra Oil & Gas Limited
46 km Flowline Gas Gathering System

Detailed Routing

Date: November 2021 Project: 29047 Submitter: D. Chranowski Reviewer: L. May

Reference: GDM midstream, transportation infrastructure data and IHS well data provided by IHS© 2021. Imagery (2018) Source: Esri, Maxar, GeoEye, Earthstar Geographics, CNES/Airbus DS, USDA, USGS, AeroGRID, IGN, and the GIS User



Local Study Area (LSA)
 [Purple outline symbol]

ROW by Land Use

- Cultivated [Red outline symbol]

Wetland Class

- Class II - Temporary Wetland [Pink outline symbol]
- Class III - Seasonal Pond or Lake [Blue outline symbol]
- Class IV - Semi-permanent Pond or Lake [Light blue outline symbol]

Watercourse [Blue line symbol]

Road [Black line symbol]

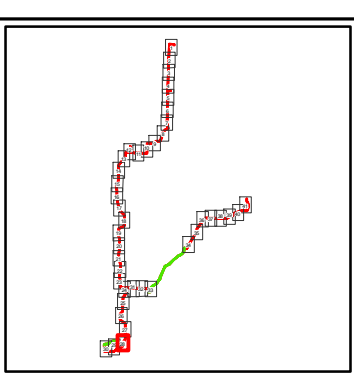
Pipeline [Yellow line symbol]

Well (Surface Hole) [Yellow dot symbol]

Breeding Bird and Amphibian Surveys [Green dot symbol]

Note: The land use is mapped to ROW

1:4,000 metres
 40 0 40 80
 NAD 1983 UTM Zone 14N



Matrix Solutions Inc.
 ENVIRONMENT & ENGINEERING

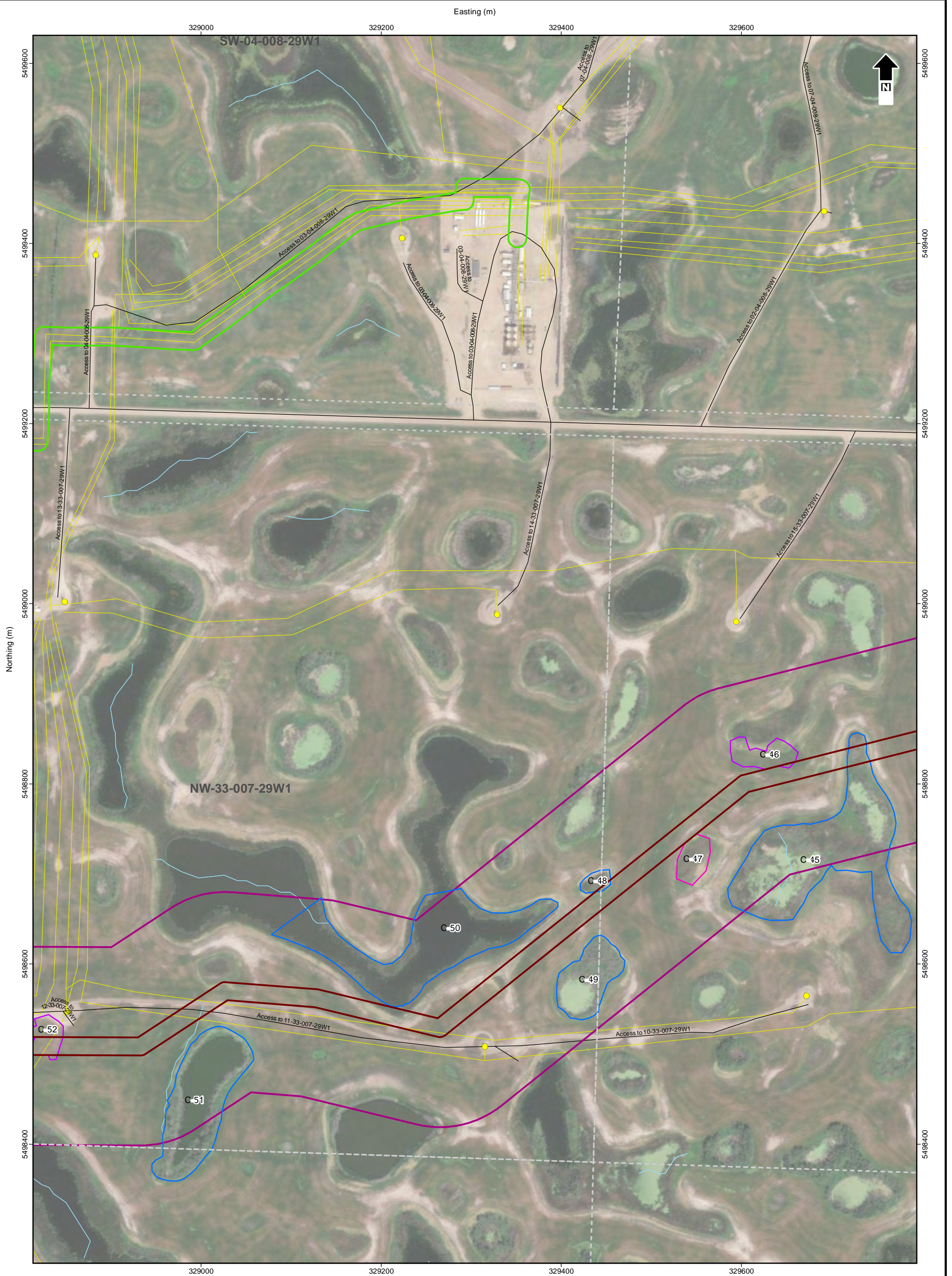
Tundra Oil & Gas Limited
 46 km Flowline Gas Gathering System

Detailed Routing

Date: November 2021	Project: 29047	Submitter: D. Chranowski	Reviewer: L. May
---------------------	----------------	--------------------------	------------------

Disclaimer: The information contained herein may be compiled from numerous third party materials that are subject to periodic change without prior notification. While every effort has been made by Matrix Solutions Inc. to ensure the accuracy of the information presented at the time of publication, Matrix Solutions Inc. assumes no liability for any errors, omissions, or inaccuracies in the third party material.

Figure 2-28



- ▭ Local Study Area (LSA)
- ▬ Existing Flowline
- ROW by Land Use**
- ▬ Cultivated
- Wetland Class**
- ▭ Class I - Ephemeral Wetland
- ▭ Class II - Temporary Wetland
- ▭ Class III - Seasonal Pond or Lake
- ~ Watercourse
- Road
- Pipeline
- Well (Surface Hole)

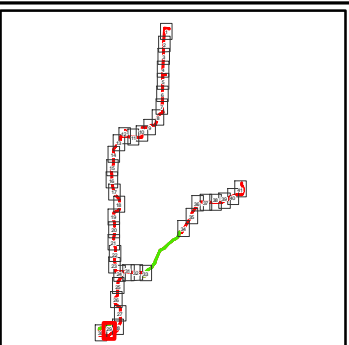
Reference: GDM midstream, transportation infrastructure data and IHS well data provided by IHS© 2021. Imagery (2018)
 Source: Esri, Maxar, GeoEye, Earthstar Geographics, CNES/Airbus DS, USDA, USGS, AeroGRID, IGN, and the GIS User


Note: The land use is mapped to ROW

1:4,000 metres

40 0 40 80

NAD 1983 UTM Zone 14N





Matrix Solutions Inc.
ENVIRONMENT & ENGINEERING

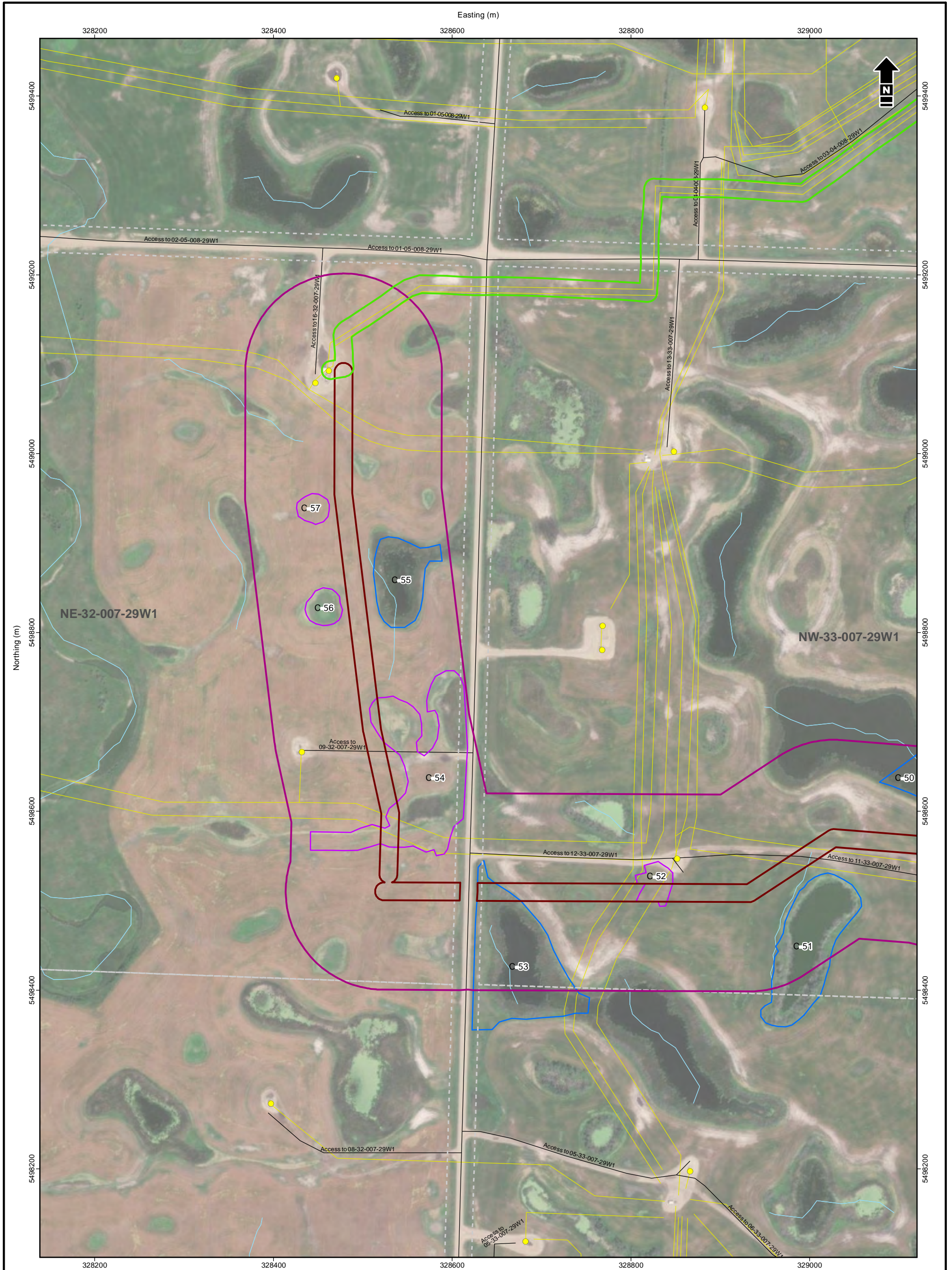
Tundra Oil & Gas Limited
46 km Flowline Gas Gathering System

Detailed Routing

Date:	Project:	Submitter:	Reviewer:
November 2021	29047	D. Chranowski	L. May

Disclaimer: The information contained herein may be compiled from numerous third party materials that are subject to periodic change without prior notification. While every effort has been made by Matrix Solutions Inc. to ensure the accuracy of the information presented at the time of publication, Matrix Solutions Inc. assumes no liability for any errors, omissions, or inaccuracies in the third party material.

Figure 2-29



█ Local Study Area (LSA)
█ Existing Flowline
ROW by Land Use
█ Cultivated
Wetland Class
█ Class II - Temporary Wetland
█ Class III - Seasonal Pond or Lake

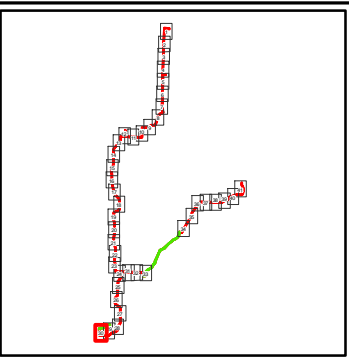
~ Watercourse
— Road
— Pipeline
● Well (Surface Hole)


Note: The land use is mapped to ROW

1:4,000 metres

40 0 40 80

NAD 1983 UTM Zone 14N




Matrix Solutions Inc.
 ENVIRONMENT & ENGINEERING

Tundra Oil & Gas Limited
 46 km Flowline Gas Gathering System

Detailed Routing

Date: November 2021	Project: 29047	Submitter: D. Chranowski	Reviewer: L. May
---------------------	----------------	--------------------------	------------------

Disclaimer: The information contained herein may be compiled from numerous third party materials that are subject to periodic change without prior notification. While every effort has been made by Matrix Solutions Inc. to ensure the accuracy of the information presented at the time of publication, Matrix Solutions Inc. assumes no liability for any errors, omissions, or inaccuracies in the third party material.

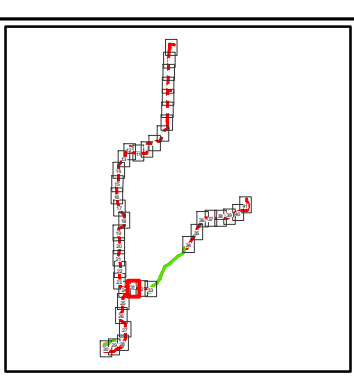
2-30



Local Study Area (LSA)	Watercourse
ROW by Land Use	Road
Cultivated	Pipeline
Woodland	Well (Surface Hole)
Wetland Class	Breeding Bird and Amphibian Surveys
Class I - Ephemeral Wetland	
Class II - Temporary Wetland	
Class III - Seasonal Pond or Lake	
Class IV - Semi-permanent Pond or Lake	

Note: The land use is mapped to ROW

1:4,000 metres
40 0 40 80
NAD 1983 UTM Zone 14N



Matrix Solutions Inc.
ENVIRONMENT & ENGINEERING

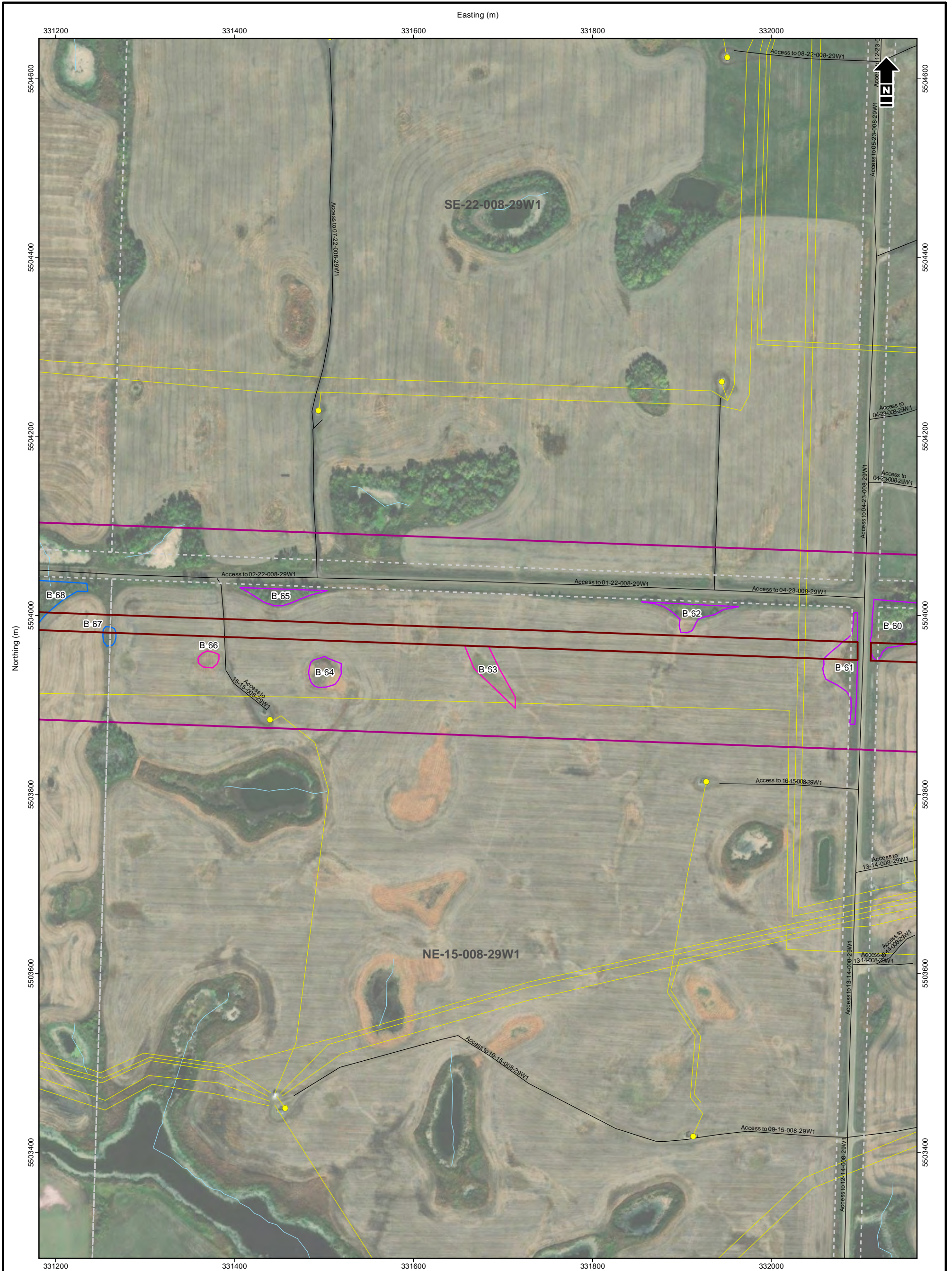
Tundra Oil & Gas Limited
46 km Flowline Gas Gathering System

Detailed Routing

Date: November 2021	Project: 29047	Submitter: D. Chranowski	Reviewer: L. May
---------------------	----------------	--------------------------	------------------

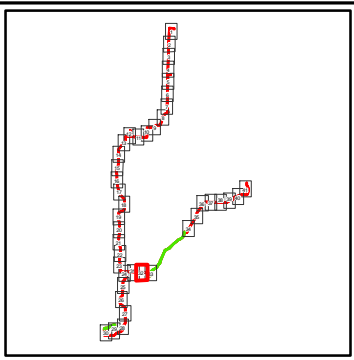
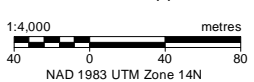
Disclaimer: The information contained herein may be compiled from numerous third party materials that are subject to periodic change without prior notification. While every effort has been made by Matrix Solutions Inc. to ensure the accuracy of the information presented at the time of publication, Matrix Solutions Inc. assumes no liability for any errors, omissions, or inaccuracies in the third party material.

Figure 2-31



- Local Study Area (LSA)
- ROW by Land Use**
- Cultivated
- Wetland Class**
- Class I - Ephemeral Wetland
- Class II - Temporary Wetland
- Class III - Seasonal Pond or Lake
- ~ Watercourse
- Road
- Pipeline
- Well (Surface Hole)

Note: The land use is mapped to ROW



Tundra Oil & Gas Limited
46 km Flowline Gas Gathering System

Detailed Routing

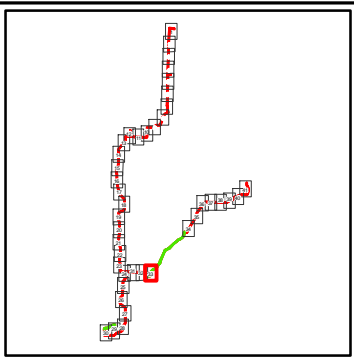
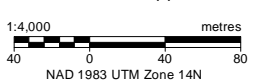
Date: November 2021 Project: 29047 Submitter: D. Chranowski Reviewer: L. May

Disclaimer: The information contained herein may be compiled from numerous third party materials that are subject to periodic change without prior notification. While every effort has been made by Matrix Solutions Inc. to ensure the accuracy of the information presented at the time of publication, Matrix Solutions Inc. assumes no liability for any errors, omissions, or inaccuracies in the third party material.



- Local Study Area (LSA)
- Existing Flowline
- ROW by Land Use**
- Cultivated
- Wetland Class**
- Class II - Temporary Wetland
- Class III - Seasonal Pond or Lake
- ~ Watercourse
- Road
- Pipeline
- Well (Surface Hole)

Note: The land use is mapped to ROW

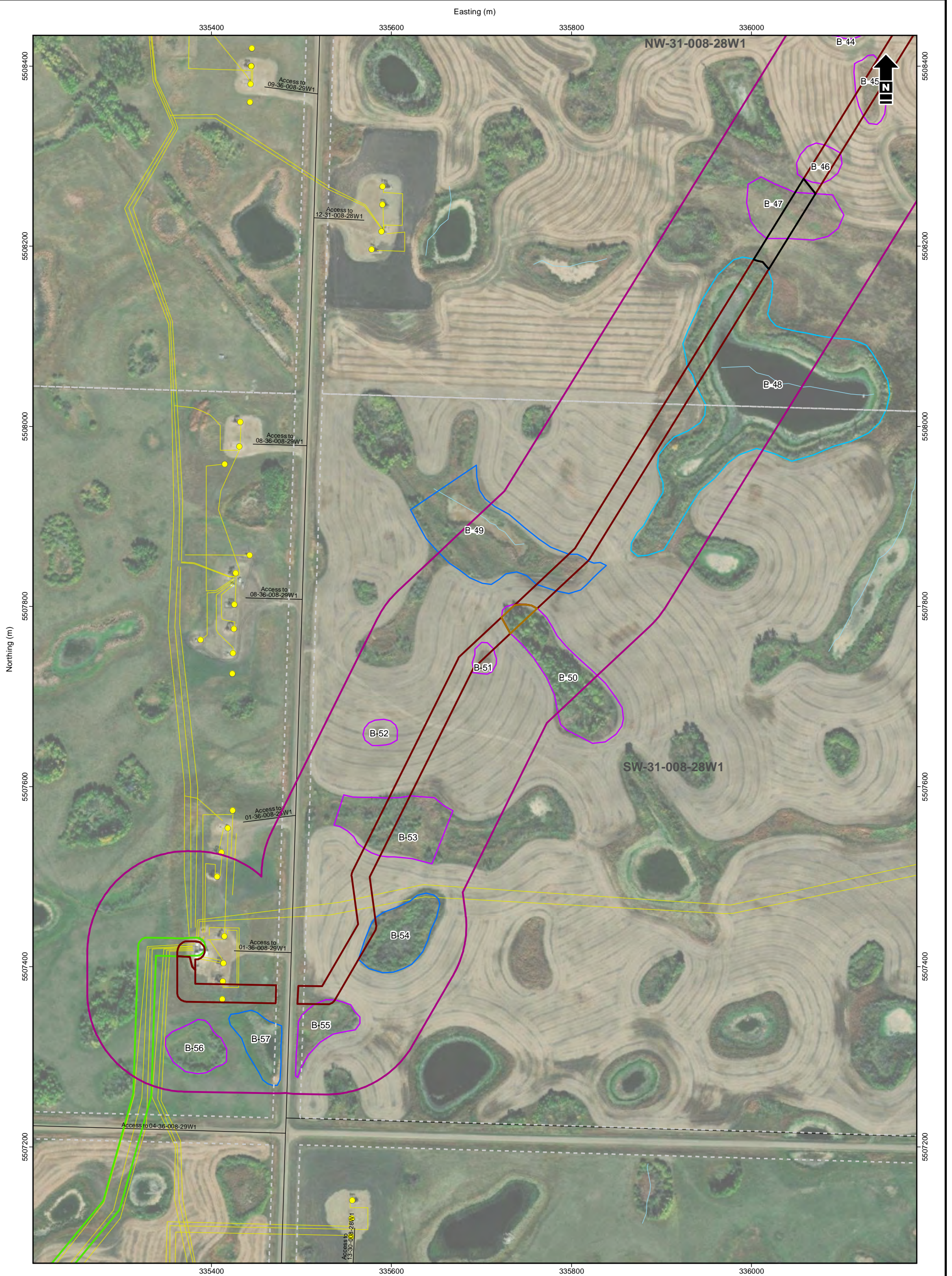


Tundra Oil & Gas Limited
46 km Flowline Gas Gathering System

Detailed Routing

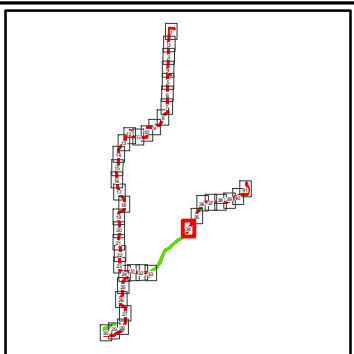
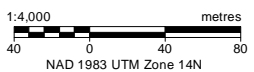
Date: November 2021 Project: 29047 Submitter: D. Chranowski Reviewer: L. May

Disclaimer: The information contained herein may be compiled from numerous third party materials that are subject to periodic change without prior notification. While every effort has been made by Matrix Solutions Inc. to ensure the accuracy of the information presented at the time of publication, Matrix Solutions Inc. assumes no liability for any errors, omissions, or inaccuracies in the third party material.



- ▭ Local Study Area (LSA)
- ▭ Existing Flowline
- ROW by Land Use**
- ▭ Modified Grassland
- ▭ Cultivated
- ▭ Woodland
- Wetland Class**
- ▭ Class II - Temporary Wetland
- ▭ Class III - Seasonal Pond or Lake
- ▭ Class IV - Semi-permanent Pond or Lake
- ~ Watercourse
- Road
- Pipeline
- Well (Surface Hole)

Note: The land use is mapped to ROW

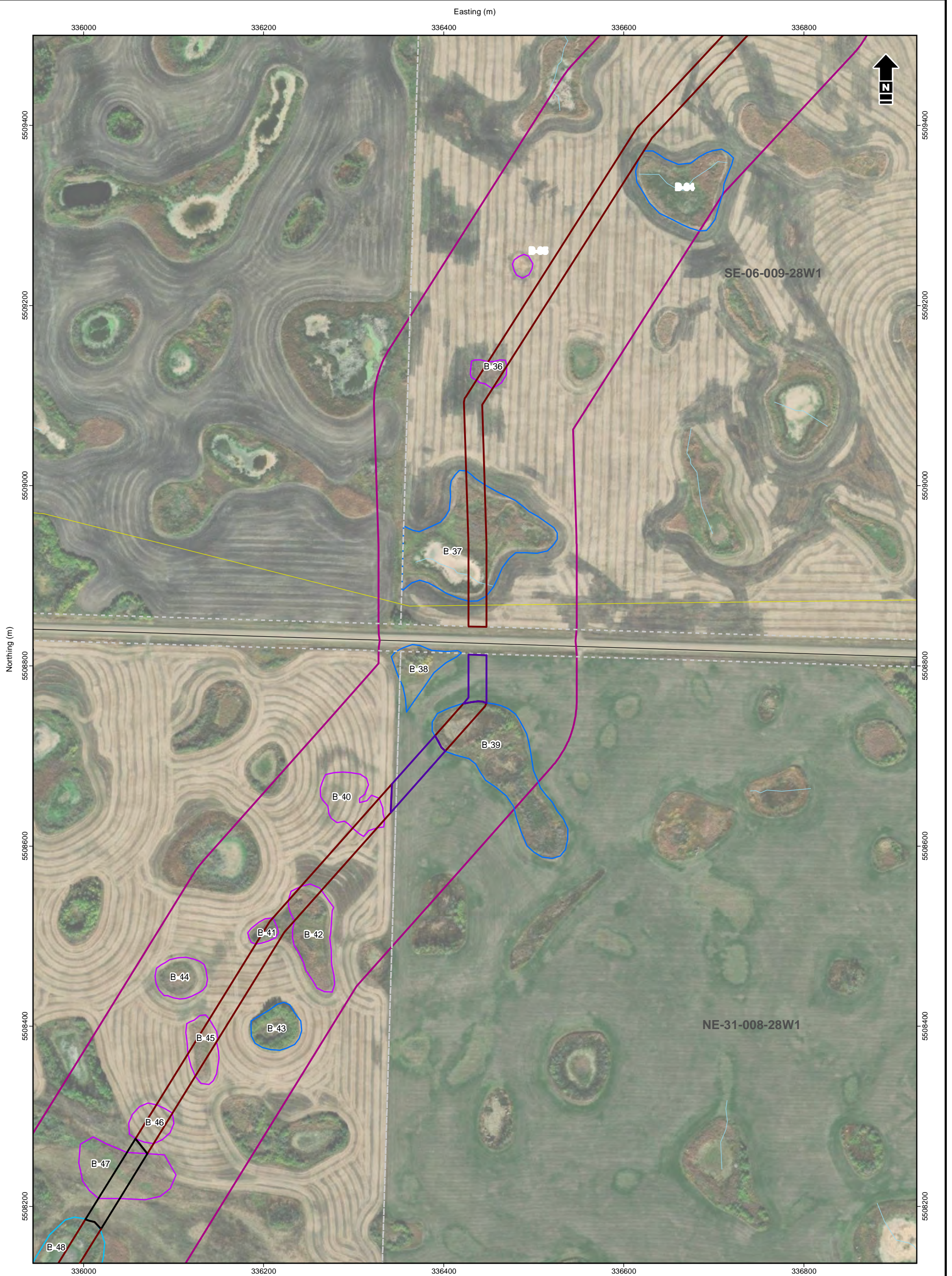


Tundra Oil & Gas Limited
46 km Flowline Gas Gathering System

Detailed Routing

Date: November 2021 Project: 29047 Submitter: D. Chranowski Reviewer: L. May

Disclaimer: The information contained herein may be compiled from numerous third party materials that are subject to periodic change without prior notification. While every effort has been made by Matrix Solutions Inc. to ensure the accuracy of the information presented at the time of publication, Matrix Solutions Inc. assumes no liability for any errors, omissions, or inaccuracies in the third party material.



- Local Study Area (LSA)
- ROW by Land Use**
- ▬ Modified Grassland
- ▬ Hay Land
- ▬ Cultivated
- Wetland Class**
- ▭ Class II - Temporary Wetland
- ▭ Class III - Seasonal Pond or Lake
- ▭ Class IV - Semi-permanent Pond or Lake
- ~ Watercourse
- ▬ Road
- ▬ Pipeline

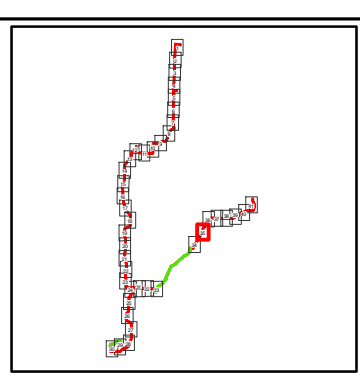
Reference: GDM midstream, transportation infrastructure data and IHS well data provided by IHS© 2021. Imagery (2018)
 Source: Esri, Maxar, GeoEye, Earthstar Geographics, CNES/Airbus DS, USDA, USGS, AeroGRID, IGN, and the GIS User


Note: The land use is mapped to ROW

1:4,000 metres

40 0 40 80

NAD 1983 UTM Zone 14N





Matrix Solutions Inc.
ENVIRONMENT & ENGINEERING

Tundra Oil & Gas Limited
46 km Flowline Gas Gathering System

Detailed Routing

Date:	November 2021	Project:	29047	Submitter:	D. Chranowski	Reviewer:	L. May
-------	---------------	----------	-------	------------	---------------	-----------	--------

Disclaimer: The information contained herein may be compiled from numerous third party materials that are subject to periodic change without prior notification. While every effort has been made by Matrix Solutions Inc. to ensure the accuracy of the information presented at the time of publication, Matrix Solutions Inc. assumes no liability for any errors, omissions, or inaccuracies in the third party material.

Figure 2-35