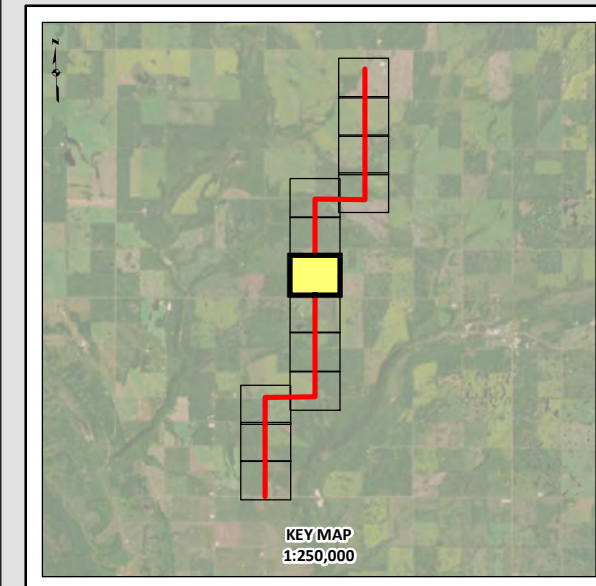
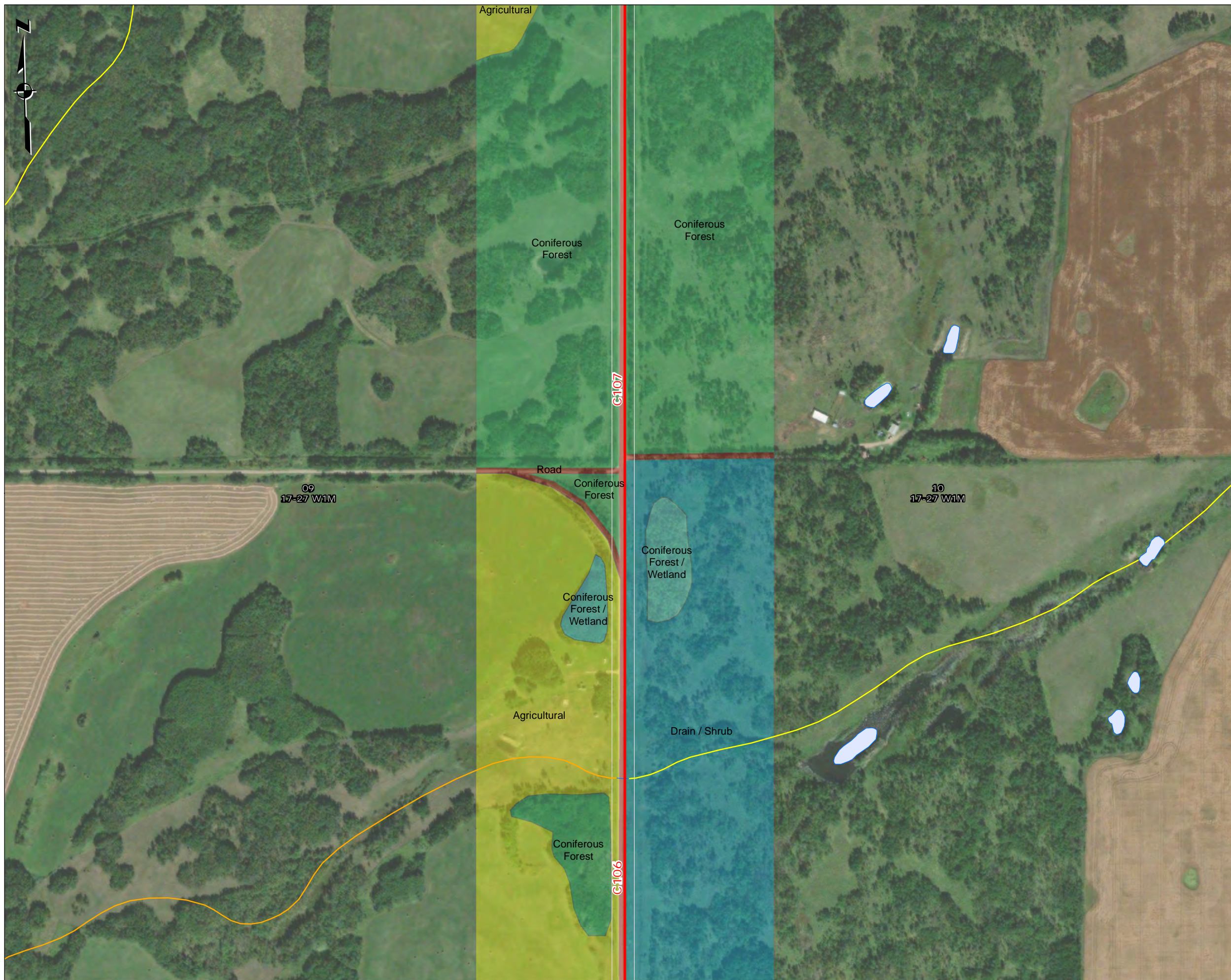


APPENDIX

A MAPBOOK

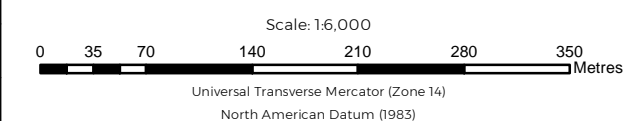




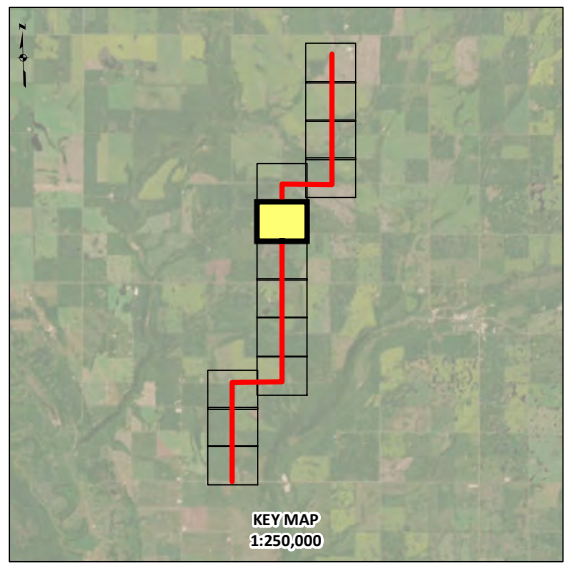
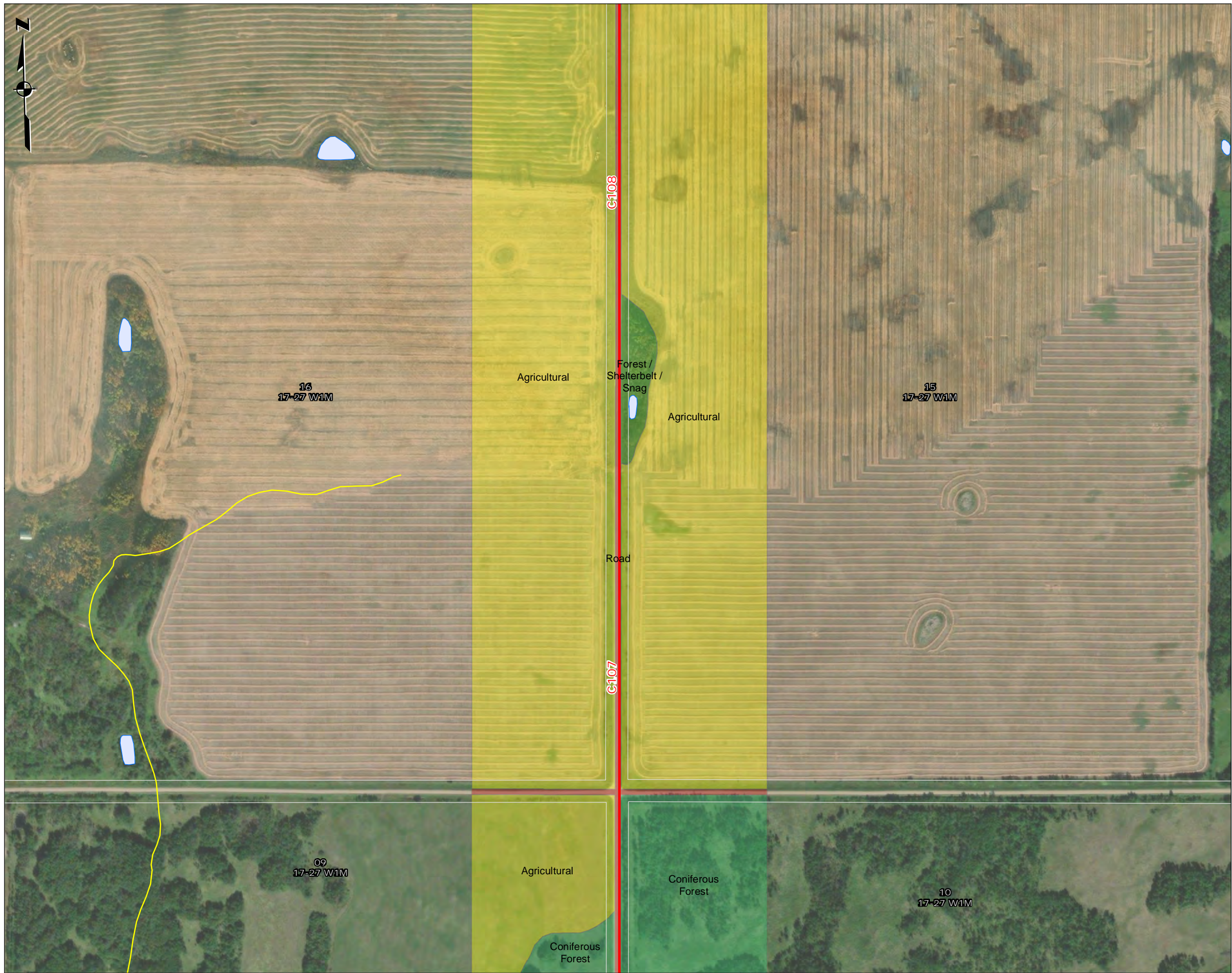
Legend

- Project Alignment
- Waterbodies
- Watercourses**
- Watercourse
- Watercourse (1st Order)
- Watercourse (2nd Order)
- Landcover**
- Agricultural
- Coniferous Forest
- Coniferous Forest / Wetland
- Drain / Shrub
- Road

Features
Monarch Hutterite Colony EAP
Manitoba



Report By: AR WSP Job #: 221-10243-00
 Drawn by: JH Date: February 21, 2023
 Reviewed By: SD Office: Winnipeg



Legend

Project Alignment

Waterbodies

Watercourses

Watercourse (1st Order)

Landcover

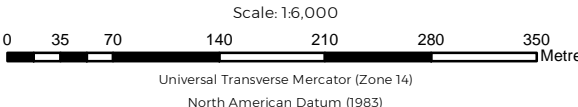
Agricultural

Coniferous Forest

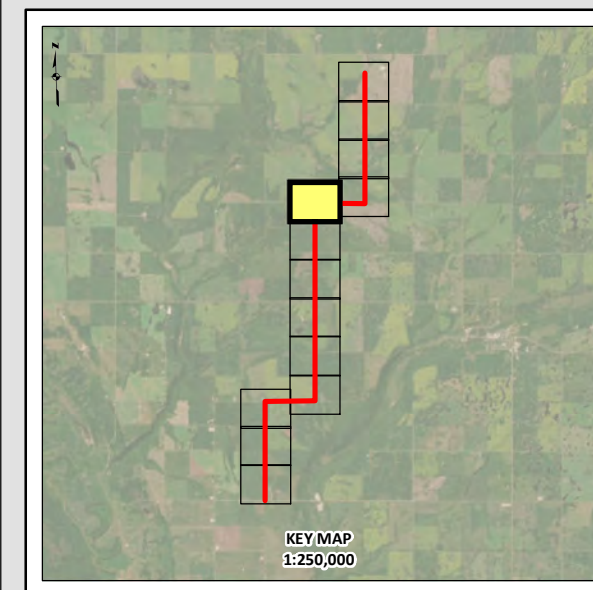
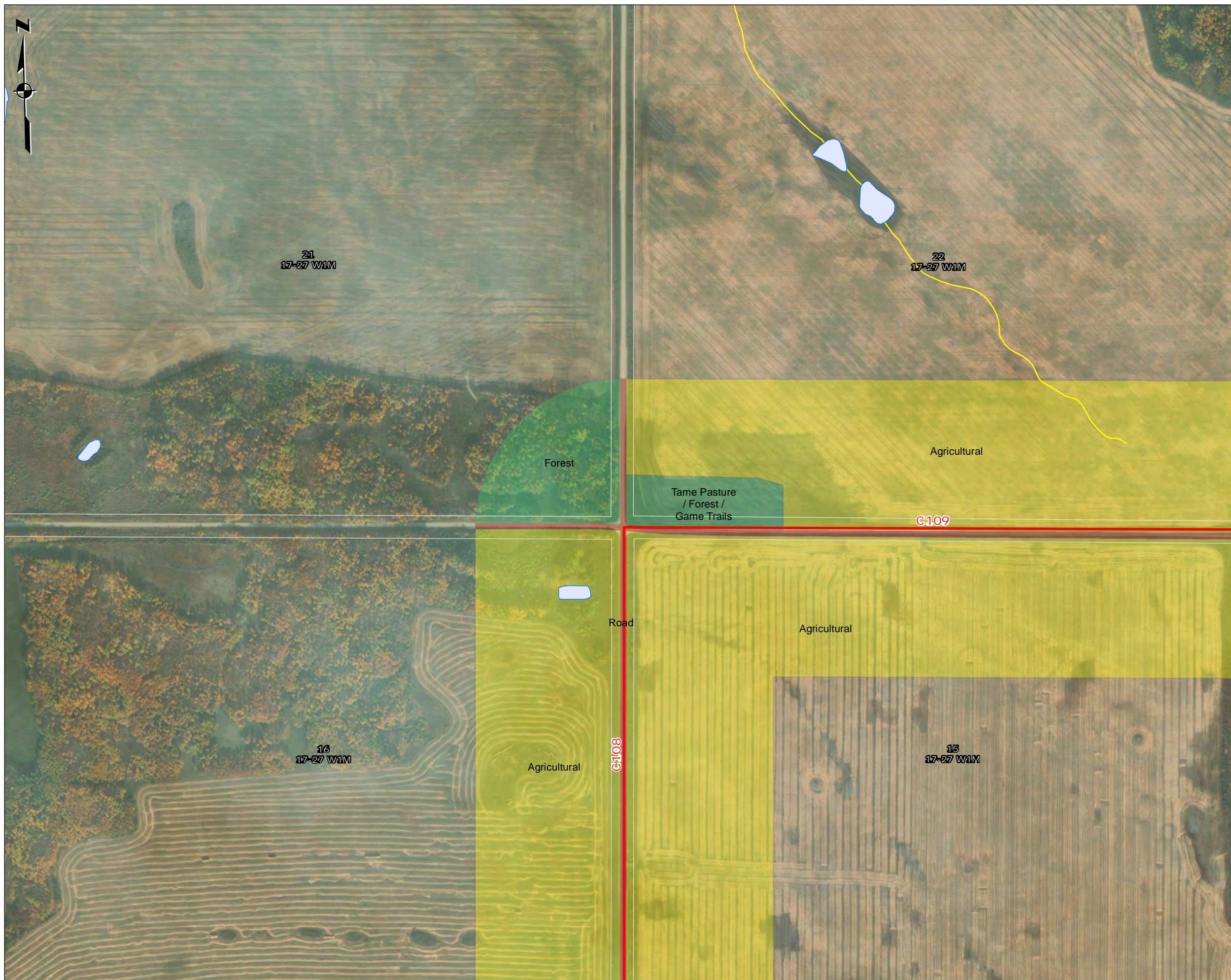
Forest / Shelterbelt / Snag

Road

Features
Monarch Hutterite Colony EAP
Manitoba



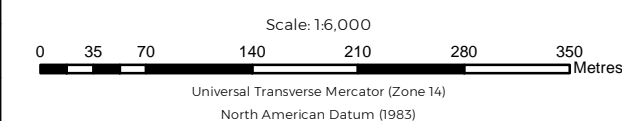
Report By: AR WSP Job #: 221-10243-00
Drawn by: JH Date: February 21, 2023
Reviewed By: SD Office: Winnipeg



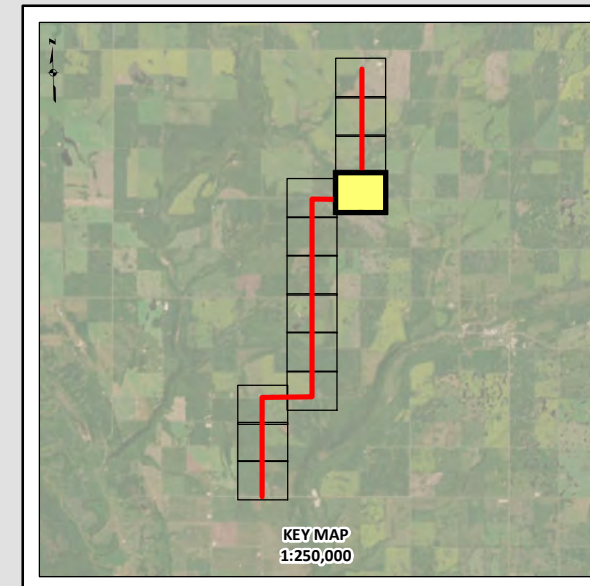
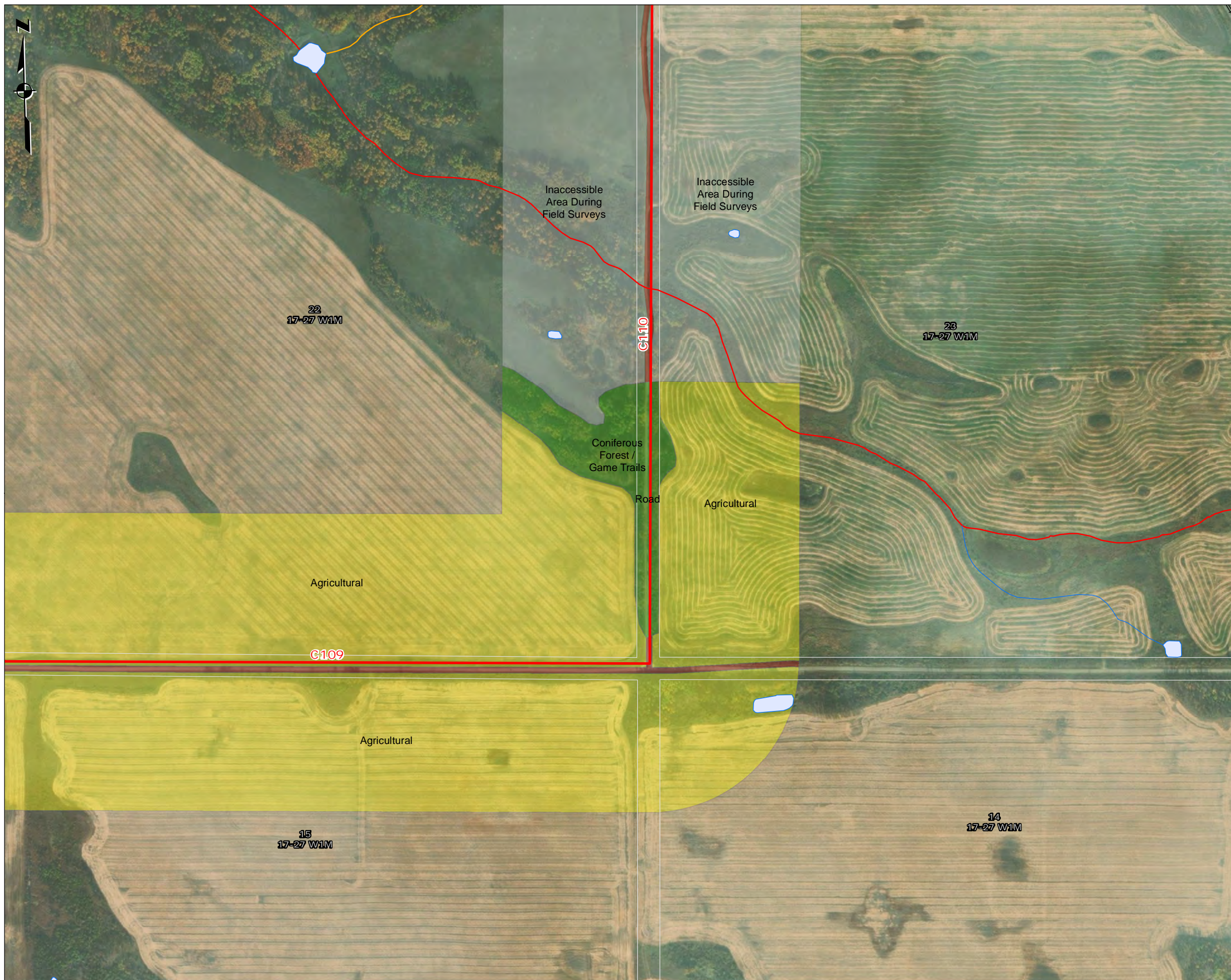
Legend

- Project Alignment
- Waterbodies
- Watercourses**
- Watercourse (1st Order)
- Landcover**
- Agricultural
- Forest
- Road
- Tame Pasture / Forest / Game Trails

Features
Monarch Hutterite Colony EAP
Manitoba



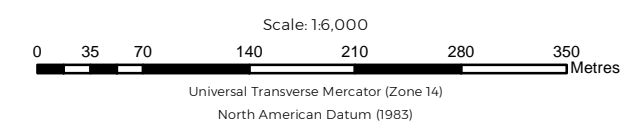
Report By: AR WSP Job #: 221-10243-00
Drawn by: JH Date: February 21, 2023
Reviewed By: SD Office: Winnipeg



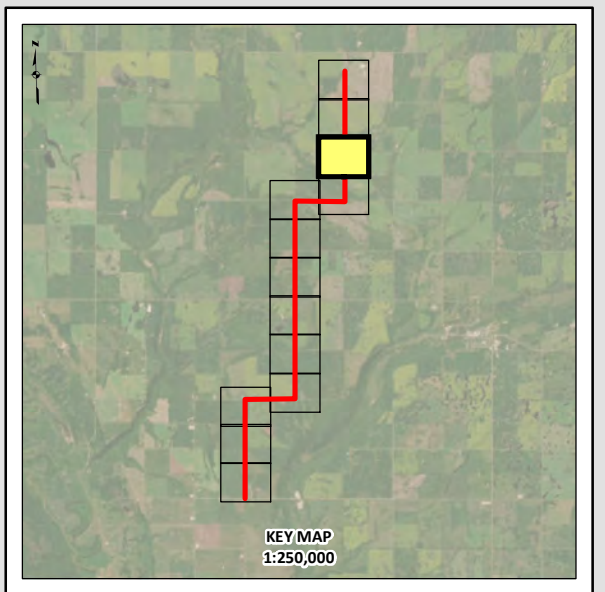
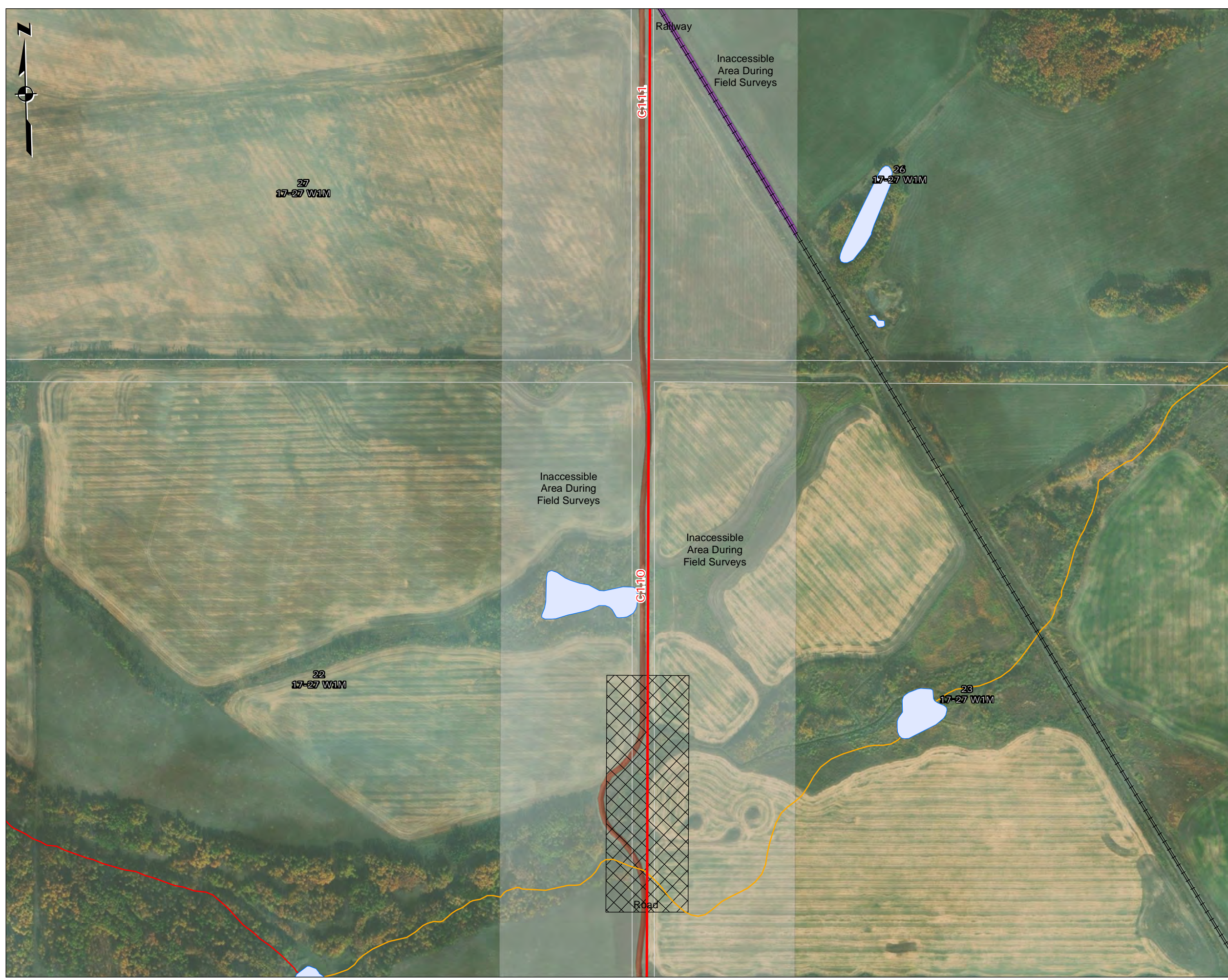
Legend

- Project Alignment
- Railway
- Waterbodies
- Watercourses**
- Watercourse
- Watercourse (2nd Order)
- Watercourse (3rd Order)
- Landcover**
- Agricultural
- Coniferous Forest / Game Trails
- Inaccessible Area During Field Surveys
- Road

Features
Monarch Hutterite Colony EAP
Manitoba



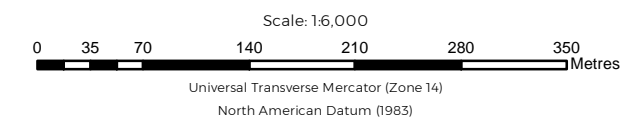
Report By: AR WSP Job #: 221-10243-00
 Drawn by: JH Date: February 21, 2023
 Reviewed By: SD Office: Winnipeg



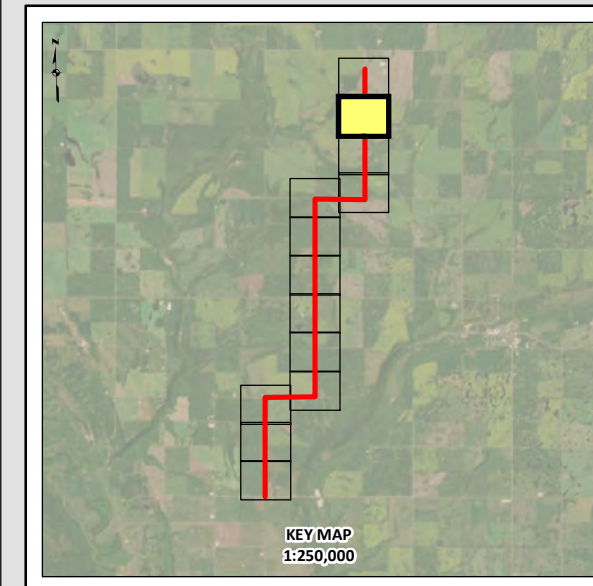
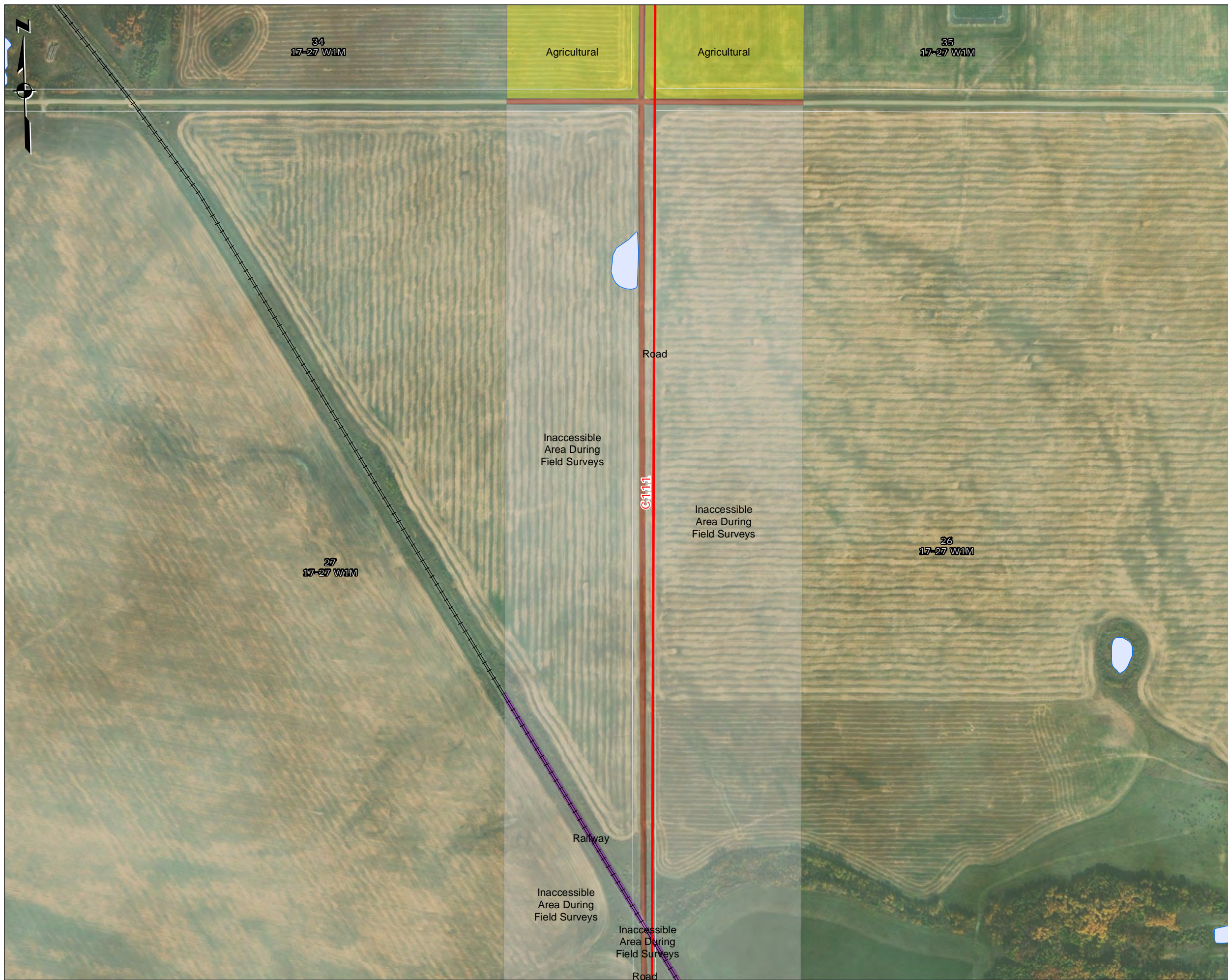
Legend

- Project Alignment
- Railway
- Potential for Pipeline Route to go Outside of ROW
- Waterbodies
- Watercourses**
- Watercourse (2nd Order)
- Watercourse (3rd Order)
- Landcover**
- Inaccessible Area During Field Surveys
- Railway
- Road

Features
Monarch Hutterite Colony EAP
Manitoba



Report By: AR WSP Job #: 221-10243-00
 Drawn by: JH Date: February 21, 2023
 Reviewed By: SD Office: Winnipeg

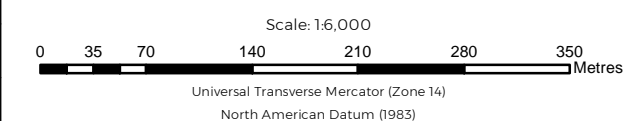


Legend

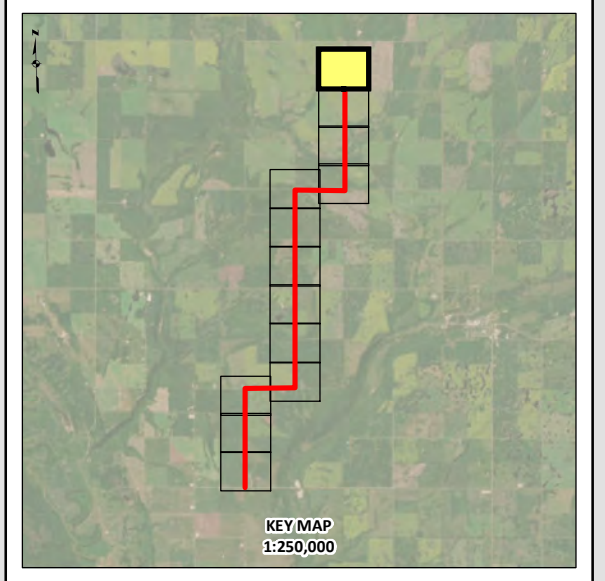
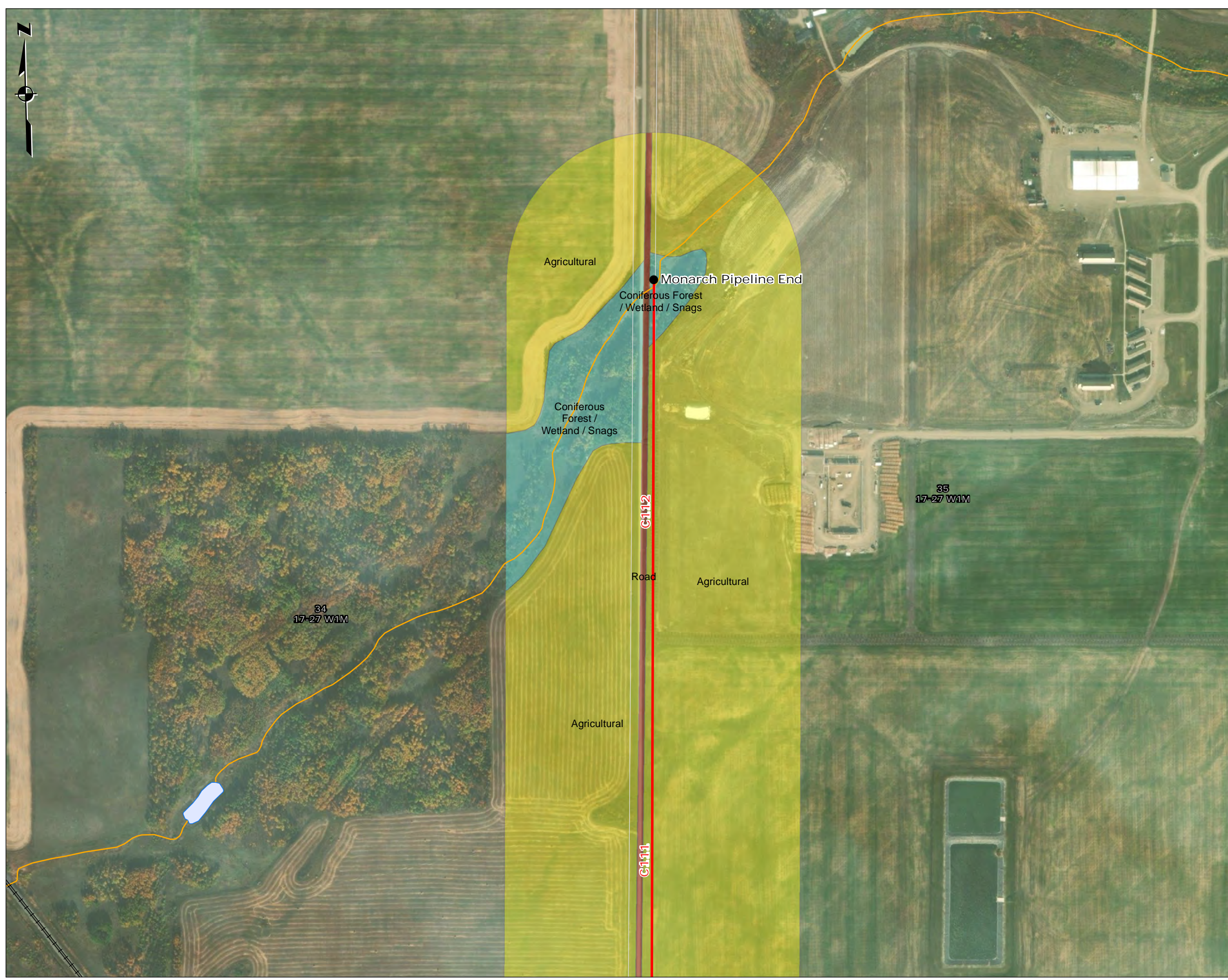
- Project Alignment
 - Railway
 - Waterbodies
- Landcover**
- Agricultural
 - Inaccessible Area During Field Surveys
 - Railway
 - Road

Features

**Monarch Hutterite Colony EAP
Manitoba**



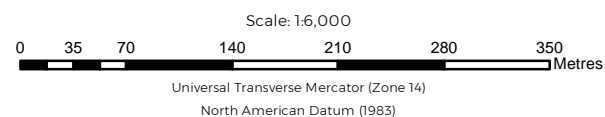
Report By: AR WSP Job #: 221-10243-00
 Drawn by: JH Date: February 21, 2023
 Reviewed By: SD Office: Winnipeg



Legend

- Project Limits
- Project Alignment
- ≡≡≡ Railway
- ☪ Waterbodies
- Watercourses**
- Watercourse (2nd Order)
- Landcover**
- Agricultural
- Coniferous Forest / Wetland / Snags
- Road

Features
Monarch Hutterite Colony EAP
Manitoba



Report By: AR WSP Job #: 221-10243-00
 Drawn by: JH Date: February 21, 2023
 Reviewed By: SD Office: Winnipeg

Notes: Imagery Source: ESRI Imagery Service