



Environment and Climate Change
Parks and Trails Division
Parks Branch
258 Portage Ave. 4th Floor
Winnipeg MB R3C 0B6

RE: Director's Order – Whiteshell Provincial Park Closure and Evacuation

Be it resolved that it is imperative that an issuance of a Director's Order, as Director of Parks, by way of section 27(1) of *The Provincial Parks Act*, is necessary to implement specific closures in provincial parks.

Due to significant risks associated with out-of-control wildfires adjacent to and within Whiteshell Provincial Park, an ongoing closure and evacuation order is required for certain areas of Whiteshell Provincial Park, including:

- Crowduck Lake
- Big Whiteshell Lake
- Caddy Lake Blocks 1, 2, 5 and the public boat launch at Block 4
- Florence Lake, Nora Lake, Ophir Siding

Please see the attached Whiteshell Provincial Park Closure Area map.

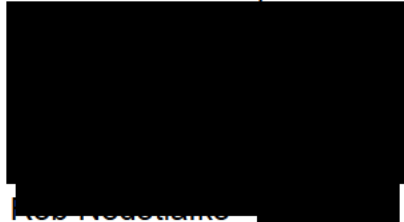
This new closure order will come into effect on Tuesday, June 3rd, 2025, at 8 am.

During the period of the closure, no person should reside in or enter the park closure area unless otherwise authorized by Manitoba Parks.

This Director's Order under *The Provincial Parks Act* is in effect until such time as it is rescinded.

Be it further resolved that that the below Director's Order for the closure and evacuation of Whiteshell Provincial Park, as issued on May 28th, 2025, is rescinded once this new closure order is effective.

Dated the 2nd day of June 2025



Rep. [Redacted]
Director, Manitoba Parks

Be it resolved that it is imperative that an issuance of a Director's Order, as Director of Parks, by way of section 27(1) of *The Provincial Parks Act*, is necessary to implement specific closures in provincial parks.

Due to significant risks associated with out-of-control wildfires adjacent to and within Whiteshell Provincial Park, an ongoing closure and evacuation order is required for certain areas of Whiteshell Provincial Park, including:

- Crowduck Lake
- Big Whiteshell Lake
- Caddy Lake Blocks 1, 2, 5, 6, 7, 8, Island, Green Bay Resort, and the public boat launch at Block 4
- West Hawk Lake – McDougall's Landing, Big Island Landing and Indian Bay
- Florence Lake, Nora Lake, Ophir Siding

Please see attached Whiteshell Provincial Park Closure Area map.

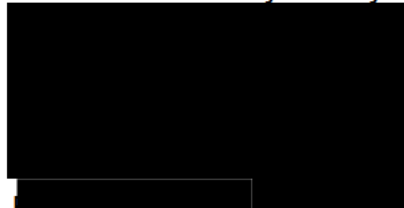
This new closure order will come into effect on Thursday, May 29th, 2025, at 9 am.

During the period of the closure, no person should reside in or enter the park closure area unless otherwise authorized by Manitoba Parks.

This Director's Order under *The Provincial Parks Act* is in effect until such time as it is rescinded.

Be it further resolved that that the below Director's order for the closure and evacuation of Whiteshell Provincial Park, as issued on May 25th, 2025, is now rescinded effective immediately.

Dated the 28th day of May 2025



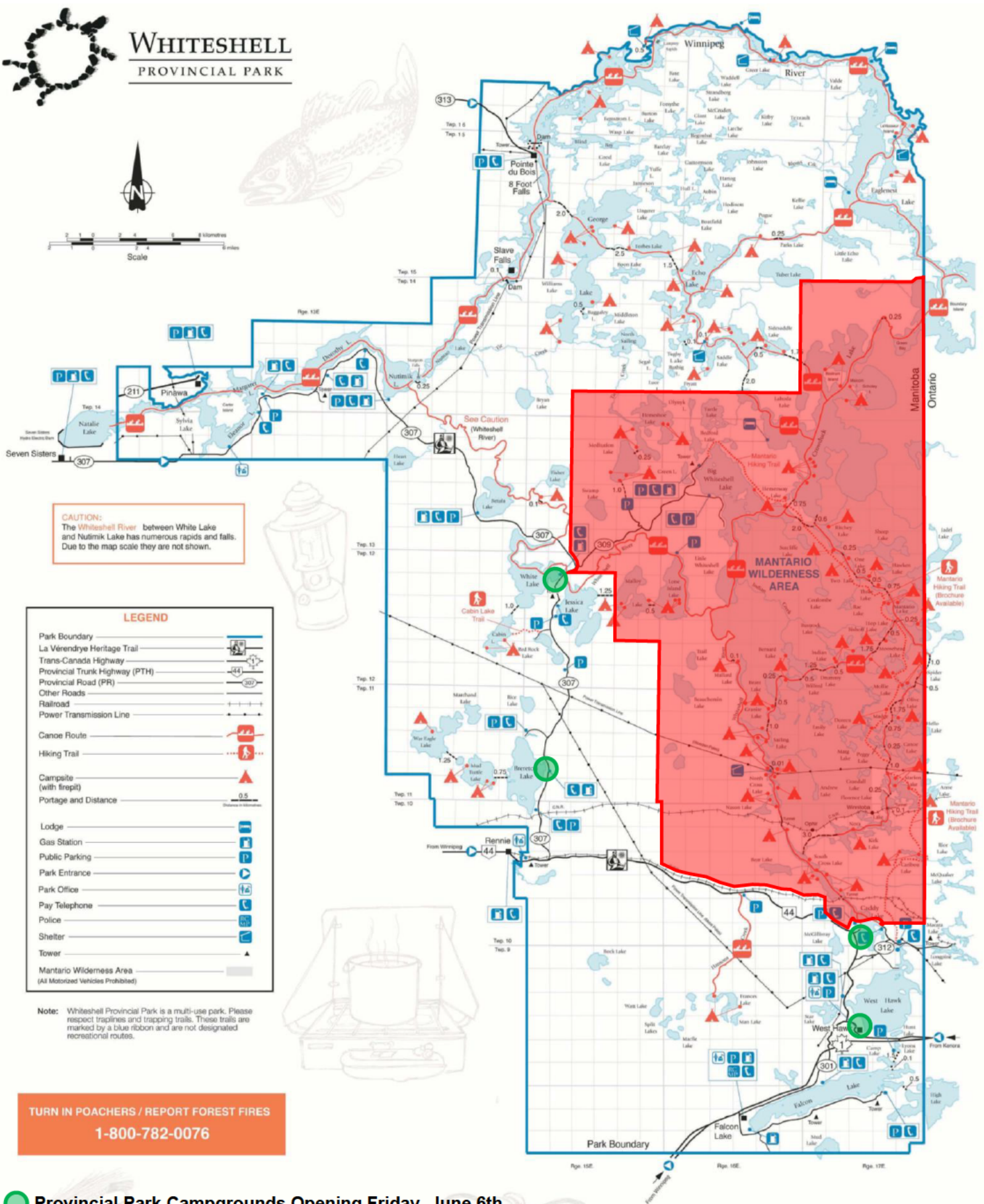
Rob McLaughlin
Director, Manitoba Parks




WHITESHELL PROVINCIAL PARK



Scale
0 1 2 3 4 5 6 7 8 kilometres



 Provincial Park Campgrounds Opening Friday, June 6th

Whiteshell Provincial Park Closure Area

The closure is in effect as of Tuesday, June 3rd, 2025, 8:00 am, and is in effect until such time as it is rescinded.