

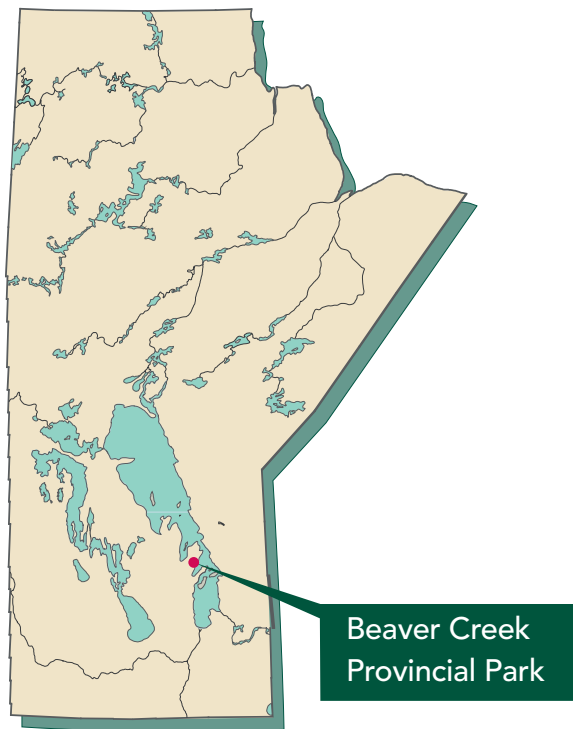
Beaver Creek Provincial Park

Management Plan



Table of Contents

- 1. Introduction 3
- 2. Park History..... 3
- 3. Park Attributes 4
 - 3.1 Natural..... 4
 - 3.2 Recreational..... 4
- 4. Park Management Framework 4
 - 4.1 Park Classification 4
 - 4.2 Park Purpose 4
 - 4.3 Land Use Categories..... 5
- 5. Park Management Guidelines..... 6
 - 5.1 Natural Values..... 6
 - 5.2 Recreation..... 6
- Appendix 7
 - A. Park Classification and Land Use Categories
- Bibliography 8



1. Introduction

The Provincial Parks Act (1993) requires that a management plan be prepared for each of Manitoba's provincial parks. Management plans establish long-term direction for parks and address issues pertaining to resource protection, land use and development. The management plan for Beaver Creek Provincial Park is based on its role in Manitoba's system of parks and the participation of those who use and care about the park. The plan is to be used in conjunction with park regulations, directives, and other departmental and government policies and legislation.

The process of preparing the management plan and co-ordinating the public involvement process was the responsibility of a team involving staff from Parks and Protected Spaces branch, regional staff of Manitoba Conservation and Water Stewardship, and a consultant contracted to work on the project.

Preparation of the management plan involved a number of steps. The first step was to review the current operation of the park, its attributes, and history of use. Information collected was then used to prepare a draft plan. Public input on the draft plan was collected primarily through the Manitoba Parks website. Once the public consultation process was completed in August of 2013, the plan was finalized based on planning objectives and any new information received through the consultation process.

This management plan will guide the work of Manitoba Conservation and Water Stewardship for a minimum of 10 to 15 years. In this context the plan will be utilized and examined on an ongoing basis. Where an update or new direction on any matters described in this management plan may be needed, a process for publicly reviewing and updating the plan will be undertaken.

The treaty and Aboriginal rights of Aboriginal peoples to pursue traditional uses and activities within Beaver Creek Provincial Park are acknowledged and respected within the context of this management plan.

2. Park History

The Beaver Creek area was developed for recreational use by the province in the mid-1950s. The site included a campground and day-use facilities, as well as two cottage subdivisions developed in response to the high demand for lakeshore cottaging opportunities. Initially established as a provincial recreation area, the site was designated as Beaver Creek Provincial Park in 1961. Beaver Creek is one in a string of recreation areas established along the west shore of Lake Winnipeg and stretching as far north as the Matheson Island landing.

3. Park Attributes

Beaver Creek Provincial Park is 28.14 hectares in size and is situated on the west shore of Washow Bay on Lake Winnipeg. The park encompasses a 2 kilometre linear stretch of land bordered by Provincial Road 234 on the west and Lake Winnipeg on the east. It is situated 162 kilometres north of Winnipeg and is accessed from Provincial Road 234.

3.1 Natural

Beaver Creek is located within the Mid-Boreal Lowland portion of the Manitoba Lowlands Natural Region. Typical vegetation includes trembling aspen, white spruce, jack pine, alder, hazel and red-osier dogwood. The campground contains an extensive grassed area with views of Lake Winnipeg and a stand of boreal forest south of the campground. The park landscape is a mix of modified and natural areas.

3.2 Recreational

The Beaver Creek campground has space for 10 basic, nightly campsites. Facilities in the campground include a day-use area, boat launch, small beach, picnic shelter and non-modern washroom. The day-use area and campground are well-used by local residents. There are also 52 developed cottage lots to the north and south of the campground.

4. Park Management Framework

4.1 Park Classification

Manitoba's provincial park system is made up of almost 100 different parks and park reserves. The role of an individual park within this system is identified by its classification. Classification descriptions can be found in Appendix A.

Beaver Creek Provincial Park is classified as a Recreation Park. The main purpose of a Recreation Park is to provide recreational opportunities in accordance with *The Provincial Parks Act* (1993).

4.2 Park Purpose

Manitoba's provincial park system was established to conserve ecosystems and maintain biodiversity; to preserve unique and representative natural, cultural and heritage resources; and to provide outdoor recreational and educational opportunities in a natural setting. Within this larger framework, individual parks contribute towards the overall objective of the provincial park system.

A System Plan for Manitoba's Provincial Parks (1997) states that the purpose of Beaver Creek Provincial Park is to provide outdoor recreational opportunities and experiences in a natural setting. The park will:

- accommodate cottaging, camping, picnicking, beach and day-use
- serve as a recreational destination for nearby communities
- provide boat access to Lake Winnipeg

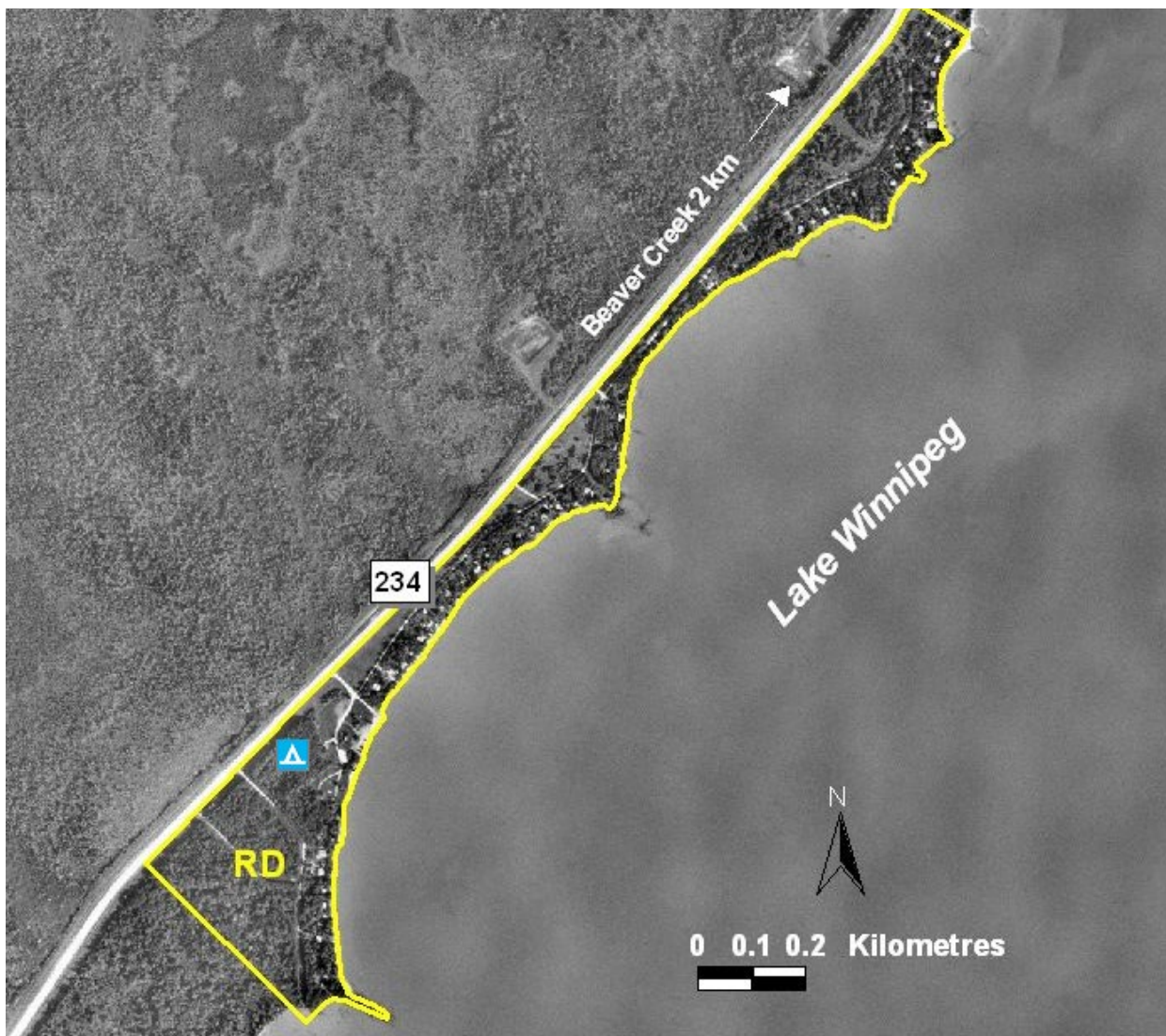
4.3 Land Use Categories

Land Use Categories (LUCs) identify the important attributes of broad areas within a provincial park. Land may be categorized in Wilderness, Backcountry, Resource Management, Recreational Development, Heritage or Access LUCs. LUC descriptions can be found in Appendix A.

All of the land comprising Beaver Creek Provincial Park has a Recreational Development (RD) LUC. The main purpose of this categorization is to accommodate recreational development. Within Beaver Creek Provincial Park, this includes:

- a camping area, picnic area and day-use area facilities
- two cottage subdivisions located north and south of the camping and day-use areas
- public boat launch providing access onto Lake Winnipeg

Beaver Creek Provincial Park Map



Map shown for illustration purposes only

5. Park Management Guidelines

5.1 Natural Values

With the exception of the cottage subdivision, Beaver Creek Provincial Park has a natural looking setting. This setting is an important aspect of the park experience. The shoreline in the park is subject to erosion due to high water levels, ice and wave action.

Guideline

1. Ongoing monitoring of the shoreline will be conducted. Appropriate remediation will be undertaken where possible to avoid serious damage to the park.

5.2 Recreation

Beaver Creek campground offers a basic level of camping service. Park maintenance staff are based at Hecla/Grindstone Provincial Park, making distance a limiting factor in determining an appropriate level of recreational development in the park. The boat launch, which is regularly exposed to strong winds and ice action, is at risk of damage and may be difficult to use at times. The southern portion of the campground is adjacent to a cottage area and benefits from the existing forested area that acts as a buffer between the two areas.

Guidelines

1. Camping will be retained at a basic level of service.
2. Potential sites for relocation of the boat launch will be investigated.
3. The forested area south of the campground will be retained and enhanced to maintain a buffer between the campground and the cottage lots to the south.

Appendix A – Park Classification and Land Use Categories

Park Classifications

In accordance with section 7(2) of *The Provincial Parks Act* (1993), all provincial parks are classified as one of the following types:

- (a) a wilderness park, if the main purpose of the designation is to preserve representative areas of a natural region;
- (b) a natural park, if the main purpose of the designation is both to preserve areas of a natural region and to accommodate a diversity of recreational opportunities and resource uses;
- (c) a recreation park, if the main purpose of the designation is to provide recreational opportunities;
- (d) a heritage park, if the main purpose of the designation is to preserve an area of land containing a resource or resources of cultural or heritage value;
- (e) any other type of provincial park that may be specified in the regulation.

Land Use Categories

In accordance with section 7(3) of *The Provincial Parks Act* (1993), all provincial parks are categorized into one or more of the following land use categories:

- (a) a wilderness category, if the main purpose of the categorization is to protect representative or unique natural landscapes in an undisturbed state and provide recreational opportunities that depend on a pristine environment;
- (b) a backcountry category, if the main purpose of the categorization is to protect examples of natural landscapes and provide basic facilities and trails for nature-oriented recreation in a largely undisturbed environment;
- (c) a resource management category, if the main purpose of the categorization is to permit commercial resource development or extraction in a manner that does not compromise the main purpose of the park classification;
- (d) a recreational development category, if the main purpose of the categorization is to accommodate recreational development;
- (e) a heritage category, if the main purpose of the categorization is to protect a unique or representative site containing a resource or resources of cultural or heritage value;
- (f) an access category, if the main purpose of the categorization is to provide a point or route of access in a provincial park or a location for a lodge and associated facilities;
- (g) any other category that may be specified in the regulation.

Bibliography

Manitoba Natural Resources. "A System Plan for Manitoba's Provincial Parks." 1997.

The Provincial Parks Act. C.C.S.M., c. P20. 1993.