

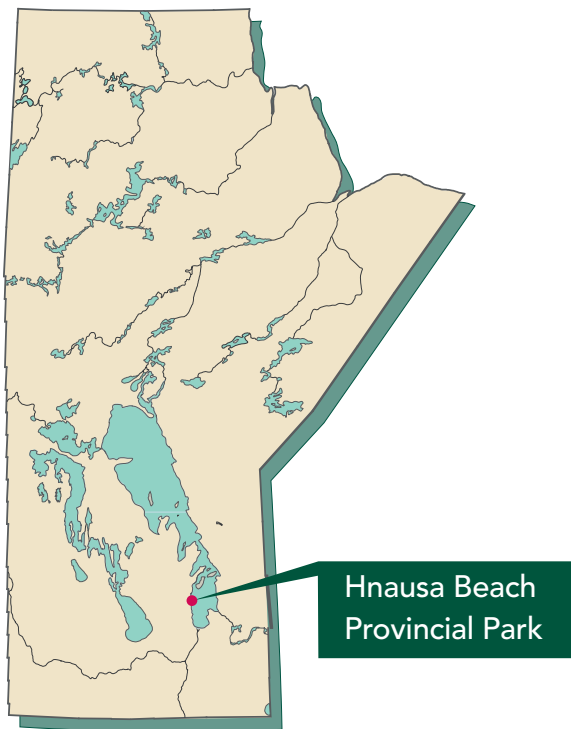
# Hnausa Beach Provincial Park

## Management Plan



# Table of Contents

<b>1. Introduction .....</b>	<b>3</b>
<b>2. Park History.....</b>	<b>3</b>
<b>3. Park Attributes.....</b>	<b>4</b>
3.1 Natural.....	4
3.2 Recreational.....	4
<b>4. Park Management Framework ....</b>	<b>4</b>
4.1 Park Classification .....	4
4.2 Park Purpose .....	4
4.3 Land Use Categories.....	5
<b>5. Park Management Guidelines.....</b>	<b>6</b>
5.1 Natural Values .....	6
5.2 Recreation .....	6
5.3 Commercial Operations.....	6
<b>Appendix .....</b>	<b>7</b>
A. Park Classification and Land Use Categories	
<b>Bibliography .....</b>	<b>8</b>



## 1. Introduction

The *Provincial Parks Act* (1993) requires that a management plan be prepared for each of Manitoba's provincial parks. Management plans establish long-term direction for parks and address issues pertaining to resource protection, land use and development. The management plan for Hnausa Beach Provincial Park is based on its role in Manitoba's system of parks and the participation of those who use and care about the park. The plan is to be used in conjunction with park regulations, directives, and other departmental and government policies and legislation.

The process of preparing the management plan and co-ordinating the public involvement process was the responsibility of a team involving staff from Parks and Protected Spaces branch, regional staff of Manitoba Conservation and Water Stewardship, and a consultant contracted to work on the project.

Preparation of the management plan involved a number of steps. The first step was to review the current operation of the park, its attributes, and history of use. Information collected was then used to prepare a draft plan. Public input on the draft plan was collected primarily through the Manitoba Parks website. Once the public consultation process was completed in August of 2013, the plan was finalized based on planning objectives and any new information received through the consultation process.

This management plan will guide the work of Manitoba Conservation and Water Stewardship for a minimum of 10 to 15 years. In this context the plan will be utilized and examined on an ongoing basis. Where an update or new direction on any matters described in this management plan may be needed, a process for publicly reviewing and updating the plan will be undertaken.

The treaty and Aboriginal rights of Aboriginal peoples to pursue traditional uses and activities within Hnausa Beach Provincial Park are acknowledged and respected within the context of this management plan.

## 2. Park History

The rail line that was developed north from Winnipeg to communities along the west shore of Lake Winnipeg in the early 1900s reached the community of Hnausa in 1914. It brought opportunities for tourism in the region and for the development of lakeside properties for recreational purposes, such as the land now occupied by Hnausa Beach Provincial Park. In 1930 the property became a public park under the RM of Bifrost's ownership and was the site of numerous Icelandic celebrations for many years. The property was transferred to the province in 1959 and designated a provincial park in 1961. The park campground was expanded in 2006-2007.

## 3. Park Attributes

Hnausa Beach Provincial Park is 9.7 hectares in size and is situated on the west shore of Lake Winnipeg. It lies 12 kilometres south of Riverton and is accessed from Provincial Road 222.

### 3.1 Natural

Hnausa Beach Provincial Park is located in the Interlake Plain portion of the Manitoba Lowlands Natural Region. A sandy beach along the shore of Lake Winnipeg is the main attraction in the park. An earthen dike with some rock protection runs between the beach and the campground area, protecting the campground from high water levels. The campground area is mostly mowed lawn with isolated trees. A small stand of ash, willow and spruce trees at the south end of the park provides some habitat for nesting birds.

### 3.2 Recreational

The small campground in the park has 5 basic and 45 electrical sites offering nightly and seasonal camping opportunities. Swimming and fishing are popular beach activities within the park. Other facilities include a picnic area, picnic shelter and playground that are available for campground and daytime visitors. The non-modern washrooms on site are augmented by a new shower/washroom building constructed in 2012/2013.

Hnausa Beach Provincial Park is an important and well used recreational resource for local and regional populations, serving the community of Hnausa itself as well as nearby communities such as Riverton and Arborg.

## 4. Park Management Framework

### 4.1 Park Classification

Manitoba's provincial park system is made up of almost 100 different parks and park reserves. The role of an individual park within this system is identified by its classification. Classification descriptions can be found in Appendix A.

Hnausa Beach Provincial Park is classified as a Recreation Park. The main purpose of a Recreation Park is to provide recreational opportunities as stated in *The Provincial Parks Act* (1993).

### 4.2 Park Purpose

Manitoba's provincial park system was established to conserve ecosystems and maintain biodiversity; to preserve unique and representative natural, cultural and heritage resources; and to provide outdoor recreational and educational opportunities in a natural setting. Within this larger framework, individual parks contribute towards the overall objective of the provincial park system.

*A System Plan for Manitoba's Provincial Parks* (1997) states that the purpose of Hnausa Beach Provincial Park is to provide outdoor recreational opportunities and experiences in Manitoba's Interlake.

The park will:

- Provide opportunities for camping and day-use, particularly swimming and beach activities
- Preserve the sandy beach and beach habitat

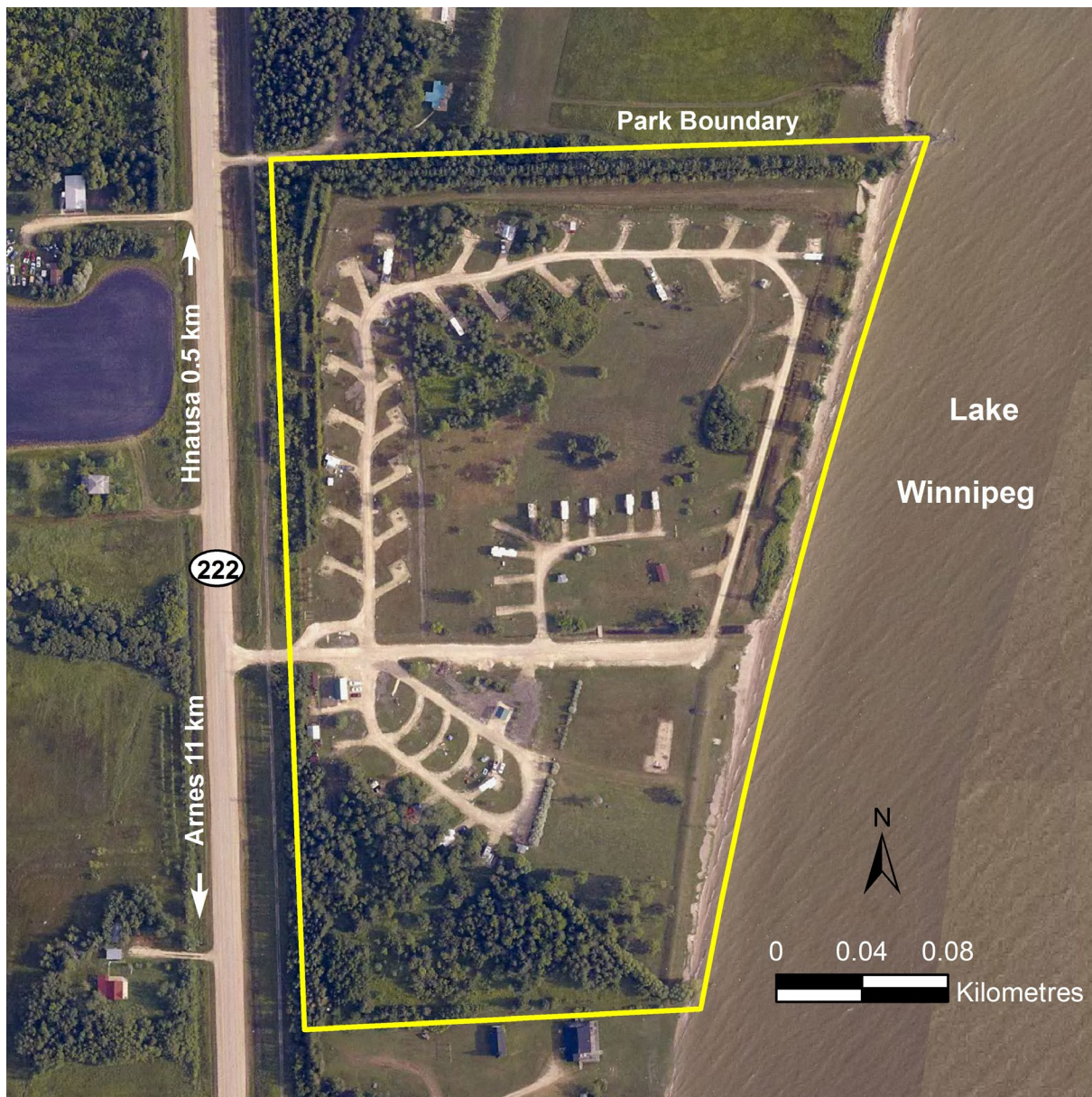
### 4.3 Land Use Categories

Land Use Categories (LUCs) identify the important attributes of broad areas within a provincial park. Land may be categorized in Wilderness, Backcountry, Resource Management, Recreational Development, Heritage or Access LUCs. LUC descriptions can be found in Appendix A.

Hnausa Beach Provincial Park has a Recreational Development (RD) LUC. The main purpose of this category is to accommodate recreational development. Within the park:

- Developments include a campground, beach, picnic shelter and playground

### Hnausa Beach Provincial Park Map



Map shown for illustration purposes only

## 5. Park Management Guidelines

### 5.1 Natural Values

Hnusa Beach Provincial Park is a highly modified recreation area with relatively few trees throughout the site. The beach and shoreline are the most significant natural features in the park and are protected by an erosion management system consisting of filter cloth, rock and willow bushes.

#### *Guidelines*

1. Ongoing monitoring of the erosion protection system and shoreline conditions will continue and repairs will be made as required.
2. A planting plan will be developed to improve site aesthetics and enhance the visitor experience by providing shade and visual screens between campsites and to buffer the park from adjoining properties and the highway.

### 5.2 Recreation

The park is an important recreational resource in the region, offering basic and electrically serviced camping, modern facilities, beach use and picnicking opportunities.

#### *Guideline*

1. Hnusa Beach will continue to provide electrically serviced camping with modern facilities.

### 5.3 Commercial Operations

Commercial activity within a park has the ability to enhance or detract from the park experience and must be managed to best suit the park environment and user needs. There are currently no commercial operations within the park and little demand from park users. The small size of the park limits the space that might be available for a commercial operation and the likely economic viability of an operation.

#### *Guideline*

1. No commercial facilities will be accommodated in the park.

## Appendix A – Park Classification and Land Use Categories

### Park Classifications

In accordance with section 7(2) of *The Provincial Parks Act* (1993), all provincial parks are classified as one of the following types:

- (a) a wilderness park, if the main purpose of the designation is to preserve representative areas of a natural region;
- (b) a natural park, if the main purpose of the designation is both to preserve areas of a natural region and to accommodate a diversity of recreational opportunities and resource uses;
- (c) a recreation park, if the main purpose of the designation is to provide recreational opportunities;
- (d) a heritage park, if the main purpose of the designation is to preserve an area of land containing a resource or resources of cultural or heritage value;
- (e) any other type of provincial park that may be specified in the regulation.

### Land Use Categories

In accordance with section 7(3) of *The Provincial Parks Act* (1993), all provincial parks are categorized into one or more of the following land use categories:

- (a) a wilderness category, if the main purpose of the categorization is to protect representative or unique natural landscapes in an undisturbed state and provide recreational opportunities that depend on a pristine environment;
- (b) a backcountry category, if the main purpose of the categorization is to protect examples of natural landscapes and provide basic facilities and trails for nature-oriented recreation in a largely undisturbed environment;
- (c) a resource management category, if the main purpose of the categorization is to permit commercial resource development or extraction in a manner that does not compromise the main purpose of the park classification;
- (d) a recreational development category, if the main purpose of the categorization is to accommodate recreational development;
- (e) a heritage category, if the main purpose of the categorization is to protect a unique or representative site containing a resource or resources of cultural or heritage value;
- (f) an access category, if the main purpose of the categorization is to provide a point or route of access in a provincial park or a location for a lodge and associated facilities;
- (g) any other category that may be specified in the regulation.

## **Bibliography**

Manitoba Natural Resources. "A System Plan for Manitoba's Provincial Parks." 1997.

*The Provincial Parks Act*. C.C.S.M., c. P20. 1993.