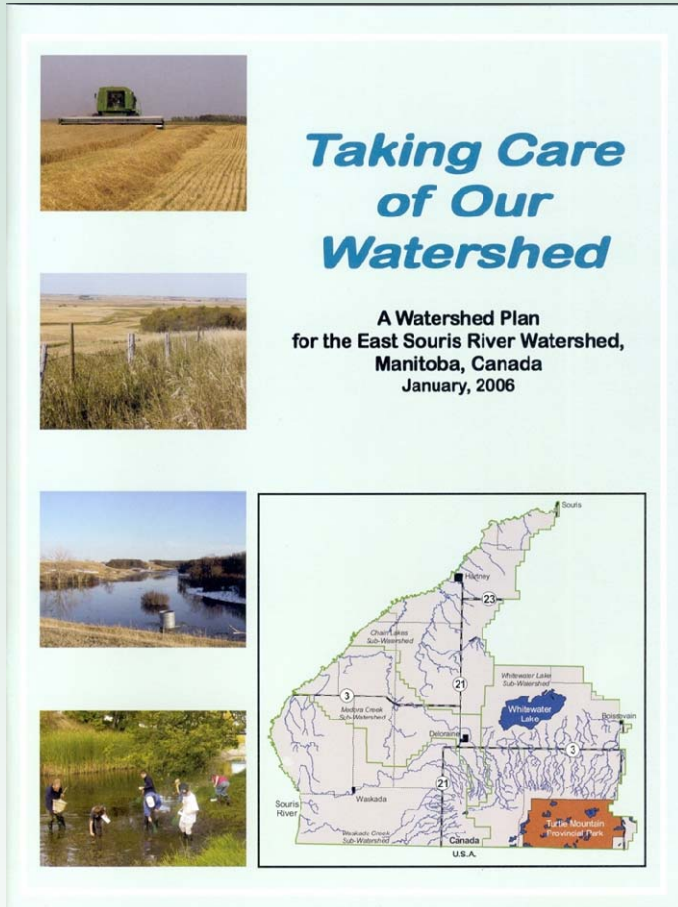


East Souris River Watershed Management Plan Implementation Update



Watershed Goals:

1. Efficient and Effective Surface Water Management
2. To Preserve and Enhance Surface and Groundwater Quality
3. Sustainable Water Supplies
4. Maintain Ecological Functions of the Watershed
5. Maintain the Productive Capability of Soils
6. Educate and Engage the Watershed Community

What is an Integrated Watershed Management Plan?

An Integrated Watershed Management Plan (the plan) is a "roadmap" for our watershed. In our plan the community set objectives and then selected common sense projects and programs that will help us reach those objectives. Our watershed plan is simply an organized way of stating what we want our environment to look like and then laying out the steps that will allow us to achieve that outcome.

The Process

In 2002, the Turtle Mountain Conservation District decided to step back and establish watershed goals by combining local input with technical advice. The goal was to ensure the plan was prepared by and for the residents of the East Souris River Watershed. The plan was completed in 2006, and was the first Integrated Watershed Management Plan to be approved by the Minister of Water Stewardship in April 2007.

What are the Benefits?

Using our plan, organizations can target programming dollars towards specific actions, objectives and goals which are needed within our watershed. The plan also helps leverage additional funding because it shows a commitment to reach defined objectives through carefully planned actions. Since our plan was completed, it has helped leverage over \$300,000 to reach our planned objectives.

Objectives Completed

Improve drainage licensing system

- Manitoba Water Stewardship has hired 12 new Water Resource Officers — generally one officer per Conservation District
- Licence application rate has doubled since 2006, minor water control works (formerly maintenance) now require licensing
- Minor works will be licensed more quickly and complex projects will receive a more thorough evaluation

Education and Communication — on-going

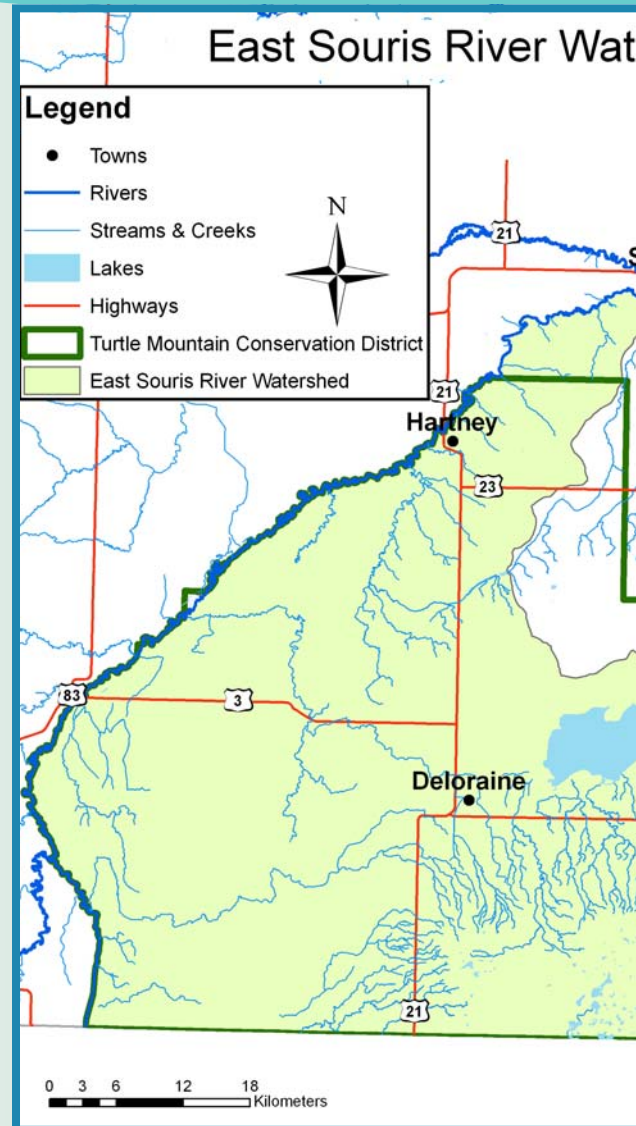
- Southwest Manitoba Water Festival held annually in Souris for Grade 5 & 6 children, over 300 children participate annually
- Turtle Mountain Conservation District holds numerous workshops, tours, farm focus days, and demonstration projects

Design a monitoring program to benchmark water quality and identify trends — on-going

- Regular water quality monitoring at two sites on the Souris River
- Turtle Mountain Conservation District offers well water sampling program for landowners
- Spring water sampling program in the Medora Creek sub-watershed

Conduct a water supply, uses and needs inventory

- Water supply, use and needs inventory was completed in April, 2009



Assess new groundwater sources

- Research was completed on detection of buried valley aquifers in Southwest Manitoba
- Overview paper completed by Manitoba Water Stewardship, including information on the Waskada Channel

Conduct wetland and riparian education workshops

- Turtle Mountain Conservation District and Manitoba Habitat Heritage Corporation have hosted two "Managing the Water's Edge" Workshops for landowners
- Turtle Mountain Conservation District supports local grazing clubs



Watershed residents and stakeholders at a planning meeting in 2005.

Objectives Underway



Develop a Surface Water Management Plan

- Identified numerous potential small water-retention sites for flood attenuation and drought relief
- Need to develop policies and guidelines for managing surface water in the watershed, Initiating a Surface Water Management Plan in Summer of 2009

Improve Enforcement of drainage infractions

- Since 2006, 42 enforcement actions in the watershed, including 11 charges and 7 pending charges, have been initiated
- Further changes to legislation/regulations are anticipated to improve the effectiveness of the Water Rights Act

Implement a salinity management program

- Turtle Mountain Conservation District and Ducks Unlimited Canada have provided voluntary soil testing and over 2,000 acres of salinity seed
- Objective is to provide salinity seed to 5,000 acres of saline soil in the watershed

Increase/maintain grassed waterways

- Turtle Mountain Conservation District has completed 13 grassed waterway projects, the Environmental Farm Plan offered funding for grassed waterways, Ducks Unlimited Canada offers grass seed to landowners
- Objective is to restore grassed waterways on 340 miles of streams in the watershed

Promote drinking water source protection

- Turtle Mountain Conservation District has sealed 151 wells since 2006
- Turtle Mountain Conservation District and Manitoba Water Stewardship to conduct Source Water Protection Assessment in 2009

Promote the conservation and restoration of natural cover in highly erosive areas

- Turtle Mountain Conservation District, Ducks Unlimited Canada and Manitoba Habitat Heritage Corporation have secured 2,197 acres of natural cover in the Turtle Mountain uplands since 2006
- Future efforts will target the Chain Lakes Valley and Blind Souris Valley; objective is to secure 25% of the natural areas in each of the target areas

Provide incentives for the conservation of wetlands

- Turtle Mountain Conservation District, Ducks Unlimited Canada and Manitoba Habitat Heritage Corporation have secured 873 acres of wetland since 2006
- Objective is to secure 200 acres of wetland habitat/year



The Honourable Christine Melnick, Minister of Water Stewardship, presents a cheque from the water stewardship fund to Turtle Mountain Conservation District's Chairman, Richard Sexton.

Next Steps – Upcoming Objectives

Develop drainage Beneficial Management Practices and mitigative measures

- Manitoba Water Stewardship is developing a best practices manual for drainage

Identify and ground-truth high erosion risk areas

- A technical review of erosion target areas is required

Design and implement a Wetland Rehabilitation Incentive Program

- Manitoba Water Stewardship, Ducks Unlimited Canada, and Manitoba Habitat Heritage Corporation have partnered to offer the Wetland Restoration Incentive Program to restore former wetlands

Design and implement a riparian management strategy for the watershed

- Turtle Mountain Conservation District to conduct a riparian enhancement project on the Souris River
- Riparian assessments are planned for the Medora Creek (2010), and Waskada/Whitewater Lake tributaries (2011)

Promote the concept of Ecological Goods and Services payments

- A comprehensive ecological goods and services program will require support from the Federal and Provincial Governments

Re-examination of the watershed plan in 2011

- 2011 is the half-way point for the life of the plan – all objectives and actions in the plan will be reassessed with the assistance of our partners

Participating organizations:

- Turtle Mountain Wildlife Association
- Goodlands Winter Sports Club
- Deloraine/Winchester Planning District
- Dennis County Planning District
- Southwest Planning District
- R.M. of Arthur
- R.M. of Brenda
- R.M. of Cameron
- R.M. of Glenwood
- R.M. of Morton
- R.M. of Winchester
- Town of Boissevain
- Town of Deloraine
- Village of Waskada
- Assiniboine Hills CD
- Turtle Mountain Conservation District
- Wheat belt Community Futures/Deloraine/Winchester EDO
- Keystone Agricultural Producers
- Manitoba Pork Council
- Ducks Unlimited Canada
- Manitoba Habitat Heritage Corporation
- Souris River Water Commission
- Agriculture and Agri-Food Canada
- Fisheries and Oceans Canada
- Environment Canada
- Manitoba Intergovernmental Affairs and Trade
- Manitoba Agriculture, Food and Rural Initiatives
- Manitoba Conservation
- Manitoba Crop Insurance Corporation
- Manitoba Industry, Economic Development and Mines
- Manitoba Transportation and Government Services
- Manitoba Water Stewardship

**Turtle Mountain
Conservation District**



Manitoba

For further information please contact:

Turtle Mountain Conservation District

129 Broadway St. N, Box 508

Deloraine, MB, R0M 0M0

(204) 747-2530

www.tmcd.ca