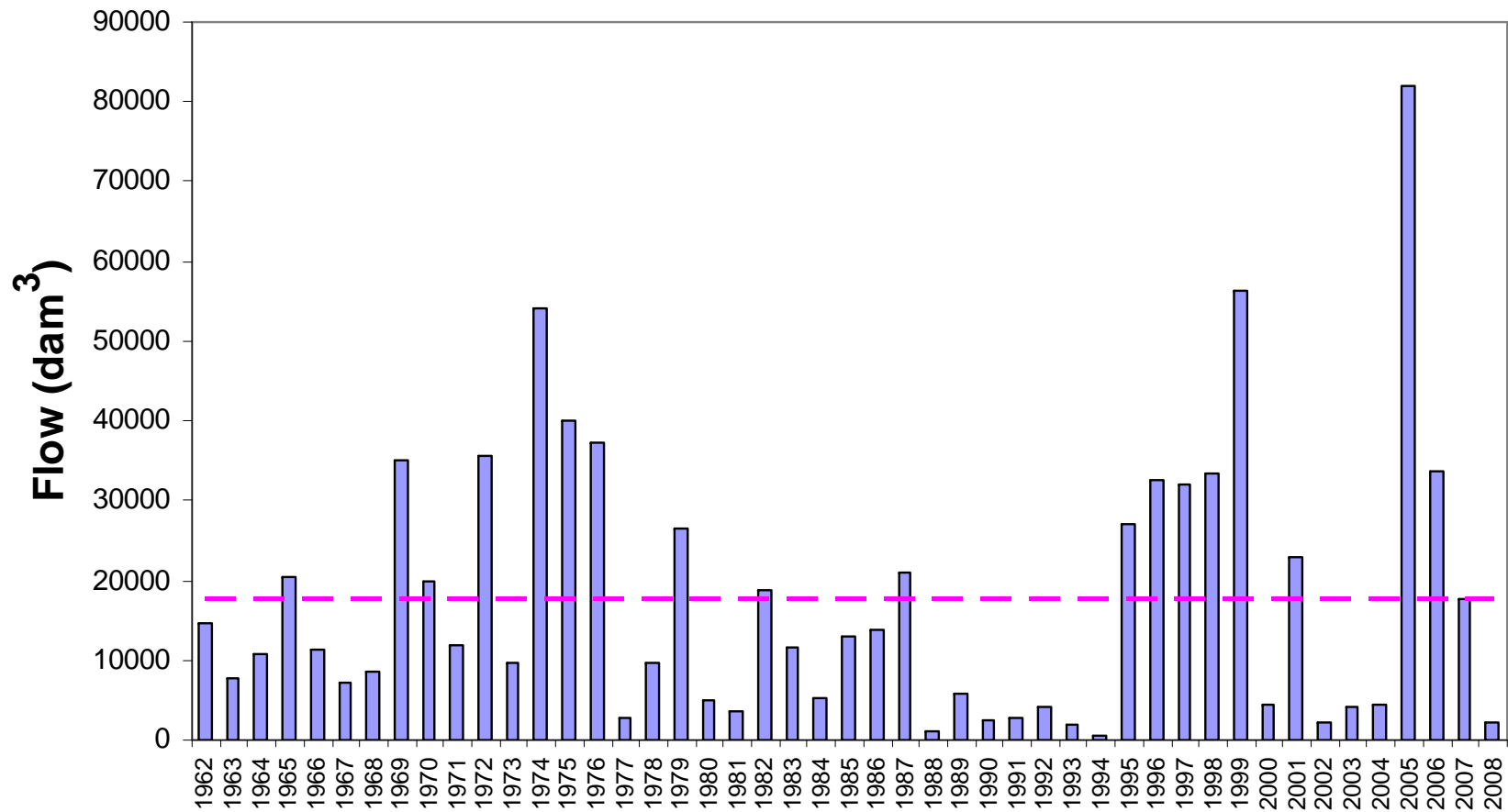


Hydrology Input for Pembina Valley IWMP

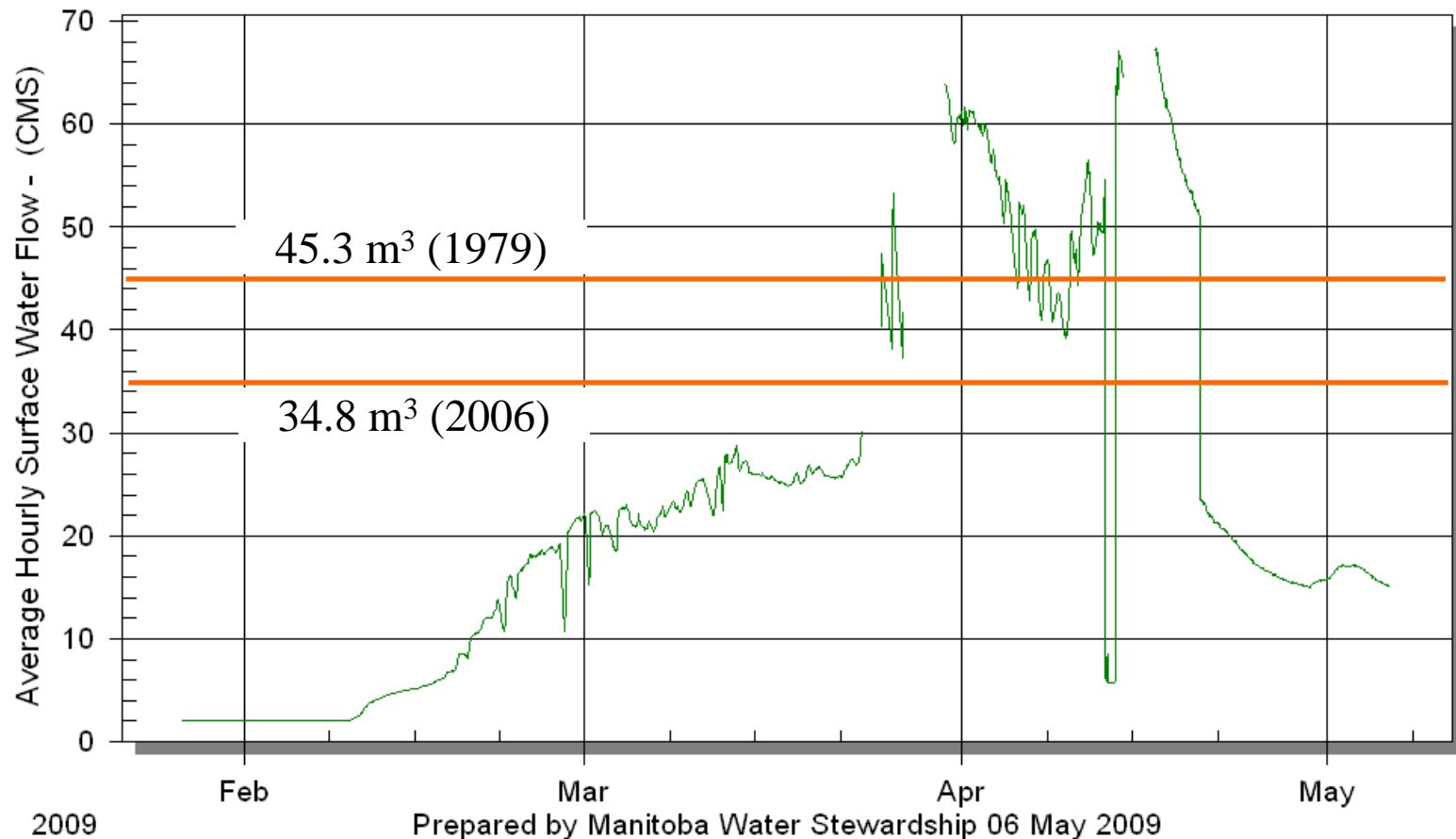
prepared by
Manitoba Water Stewardship

Annual flow volumes of Pembina River u/s Lorne Lake

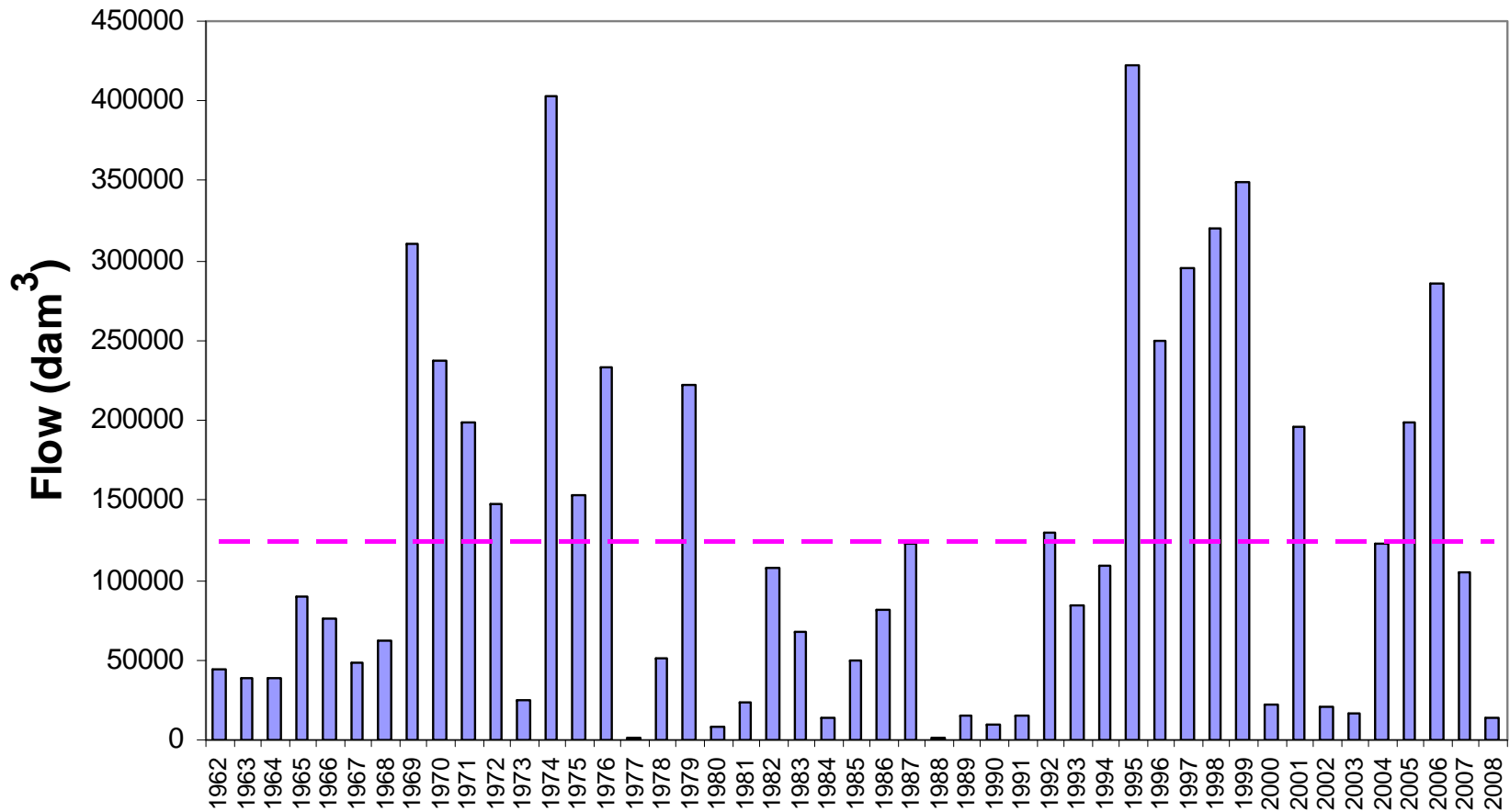


Hourly flows (2009)

PEMBINA RIVER ABOVE LORNE LAKE
WATER SURVEY OF CANADA DATA

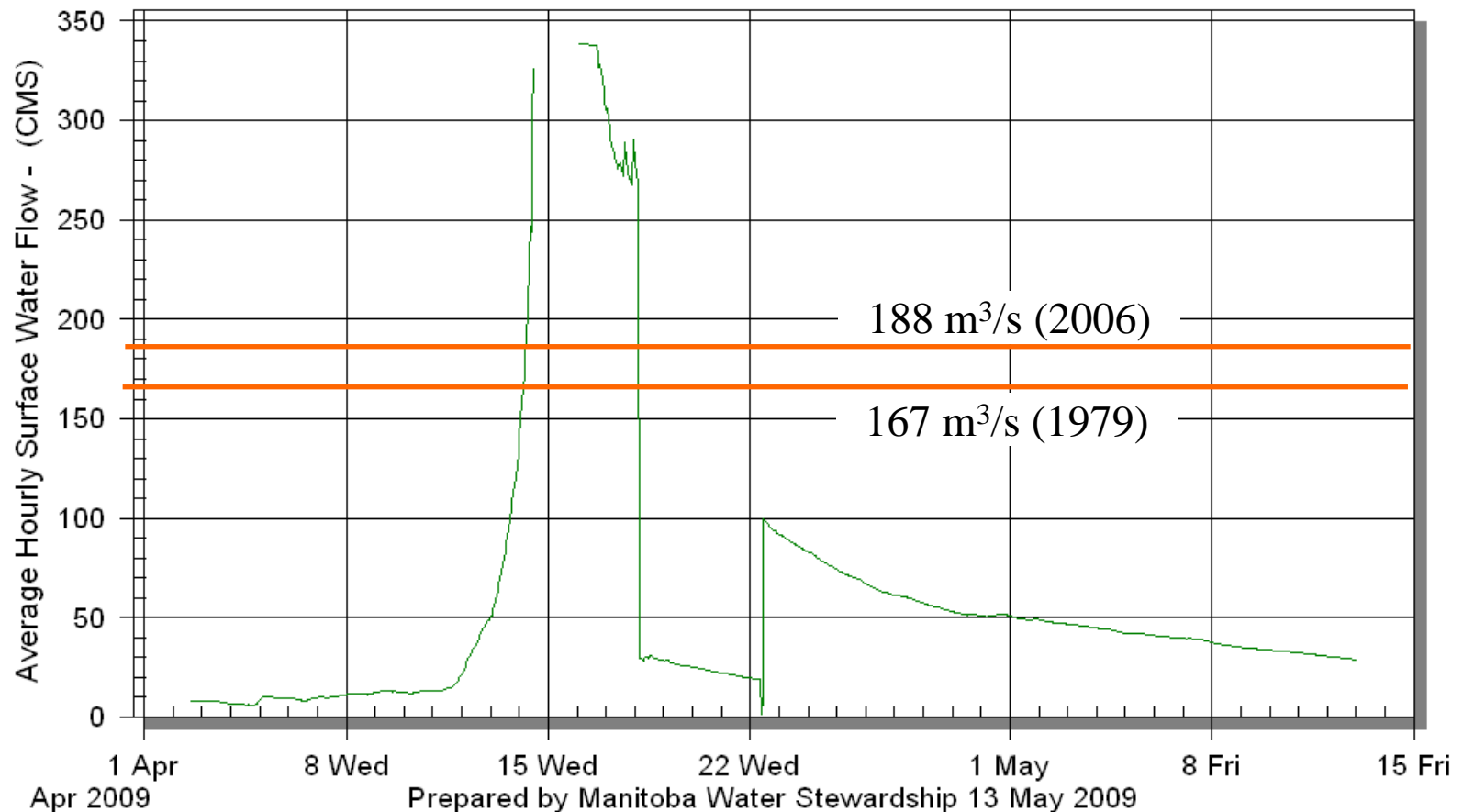


Annual flow volumes of Pembina River d/s Crystal Creek

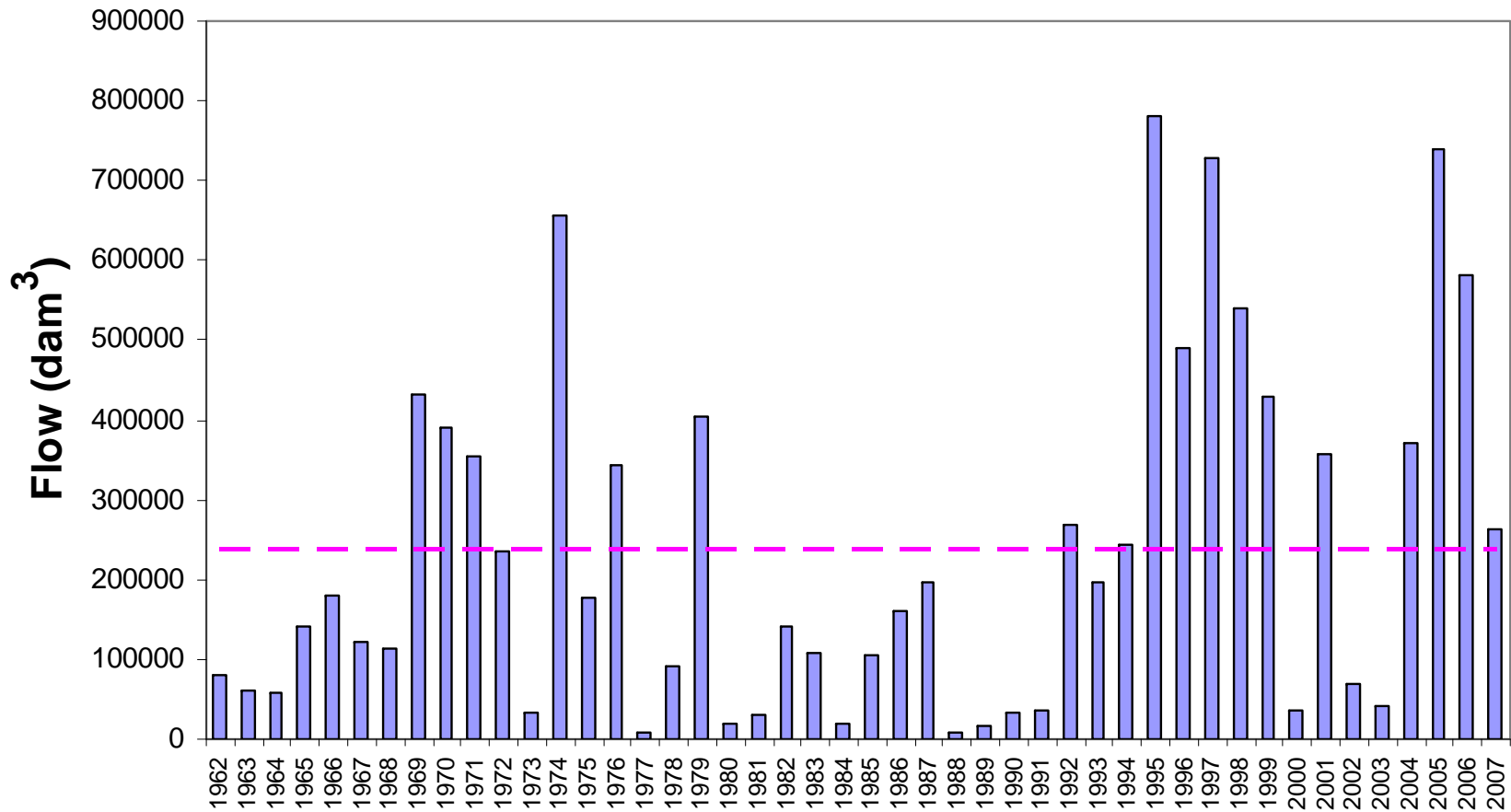


Hourly flows (2009)

PEMBINA RIVER BELOW CRYSTAL CREEK WATER SURVEY OF CANADA DATA

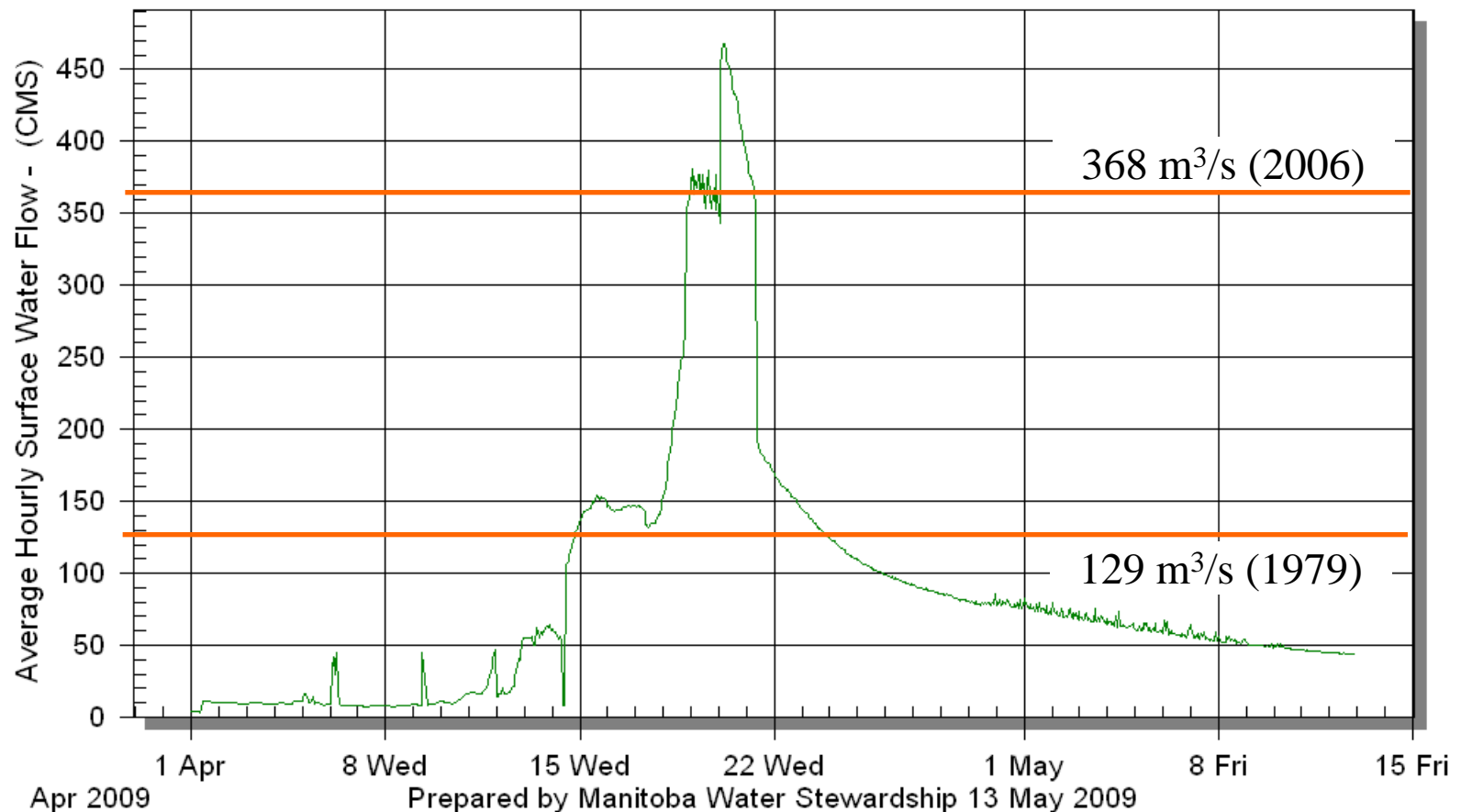


Annual flow volumes of Pembina River near Windygates

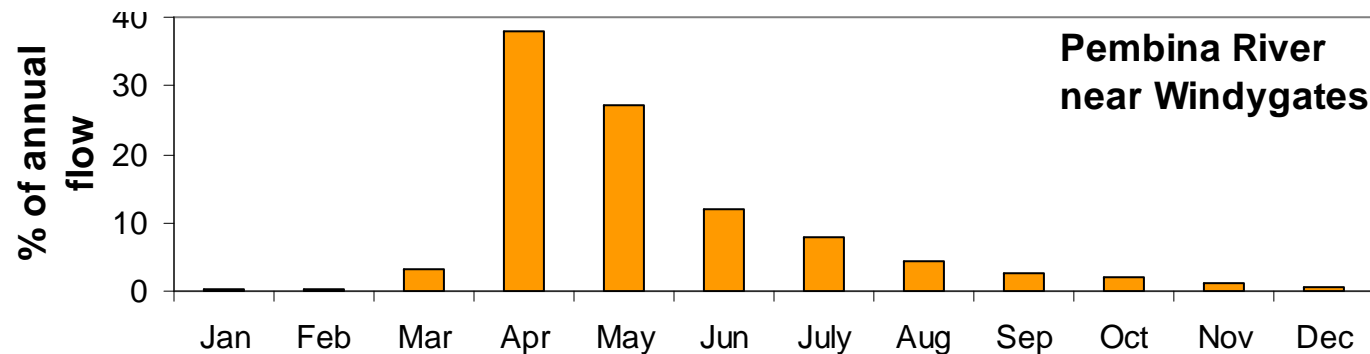
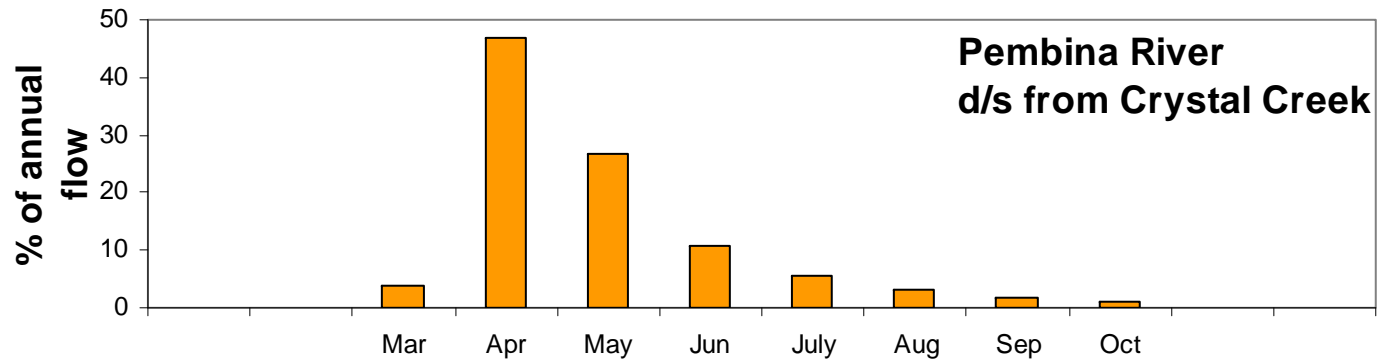
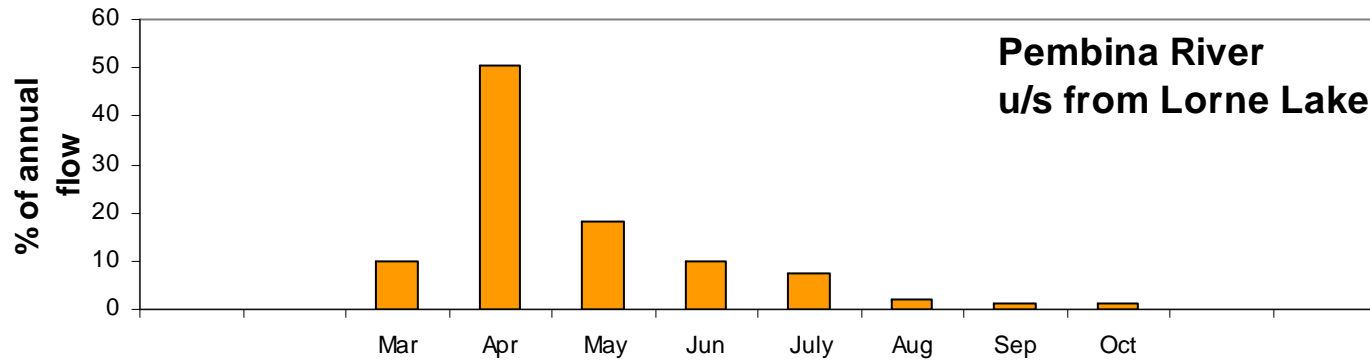


Hourly flows (2009)

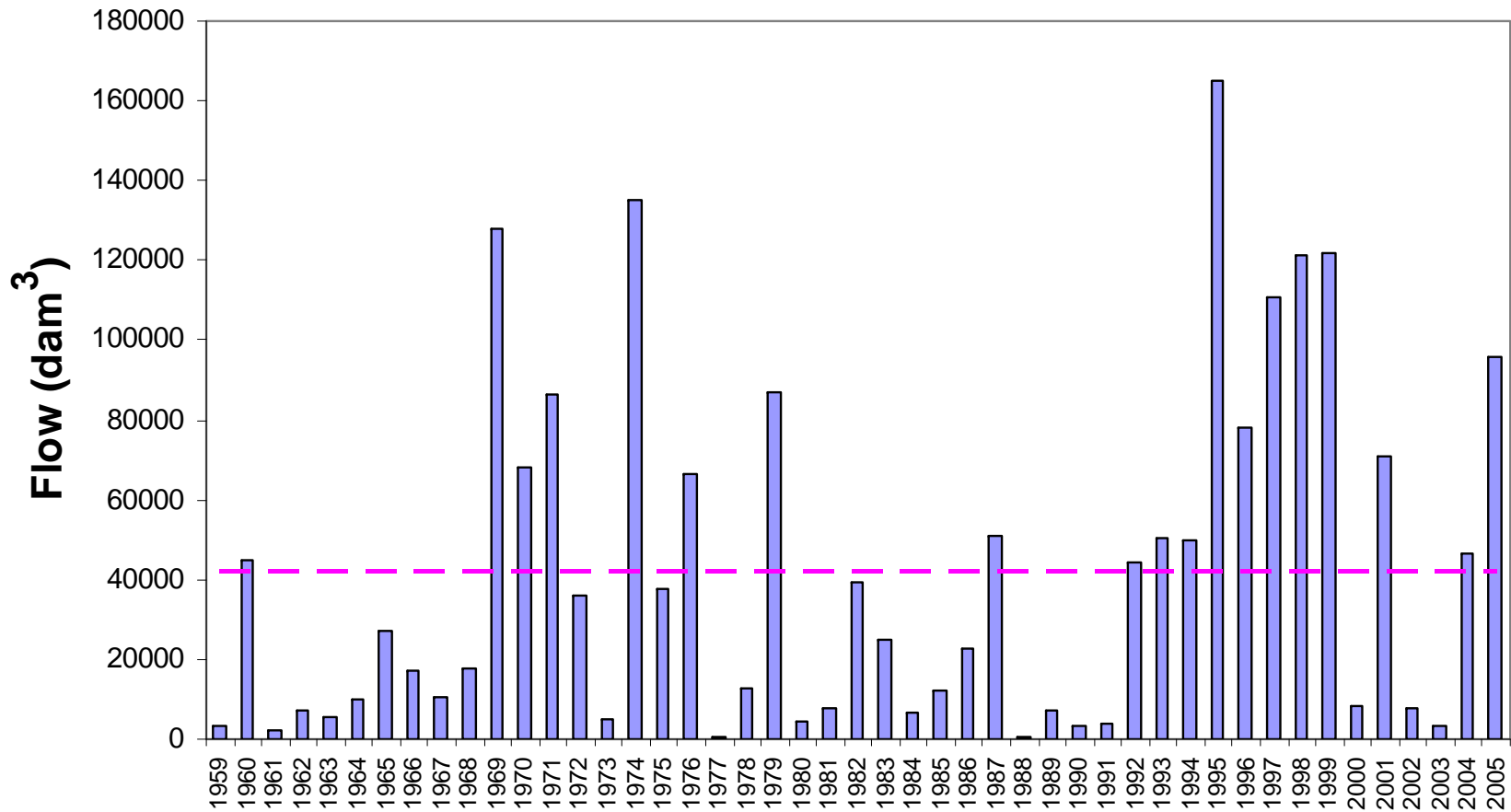
PEMBINA RIVER NEAR WINDYGATES
WATER SURVEY OF CANADA DATA



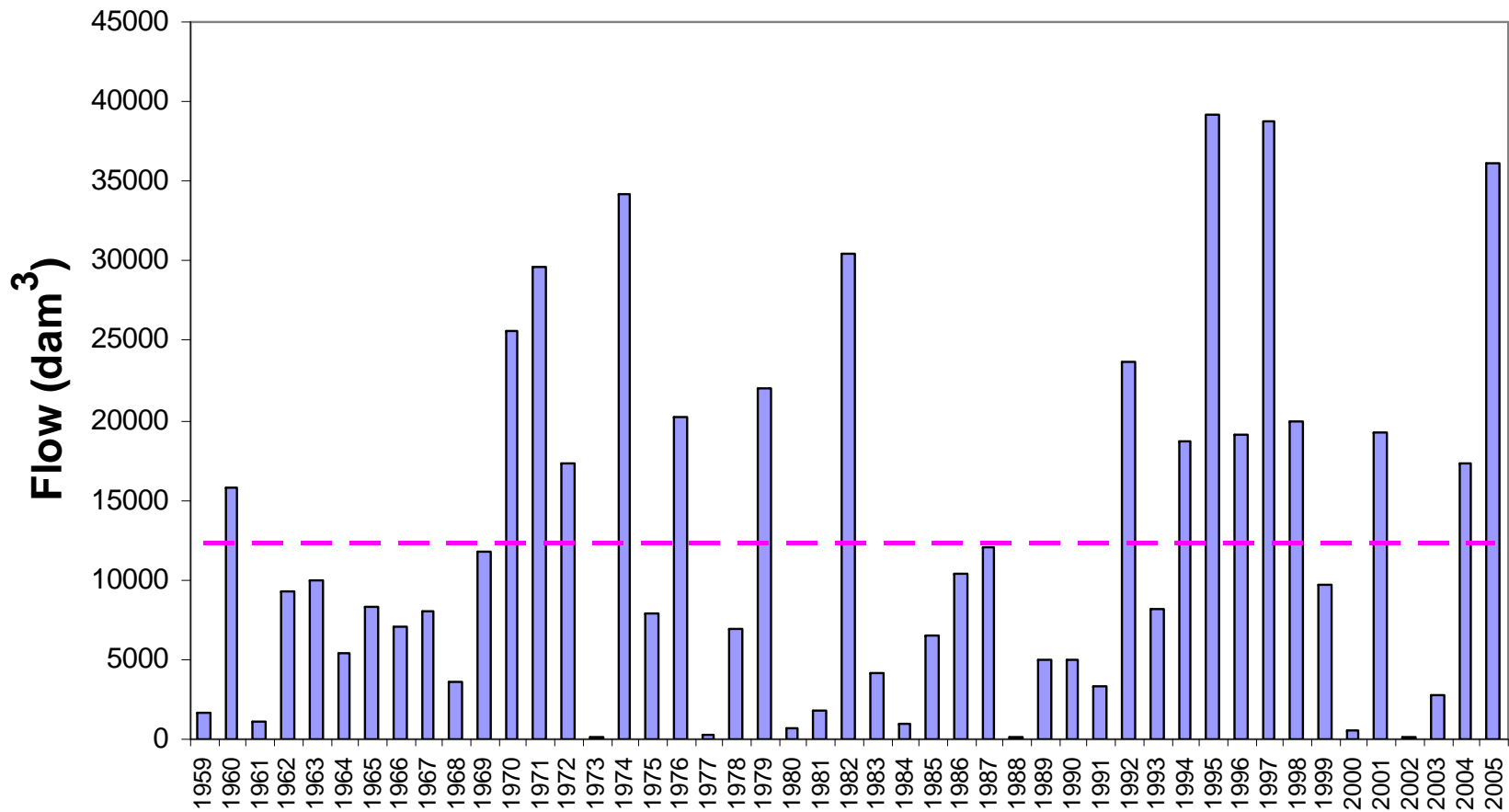
Monthly distributions



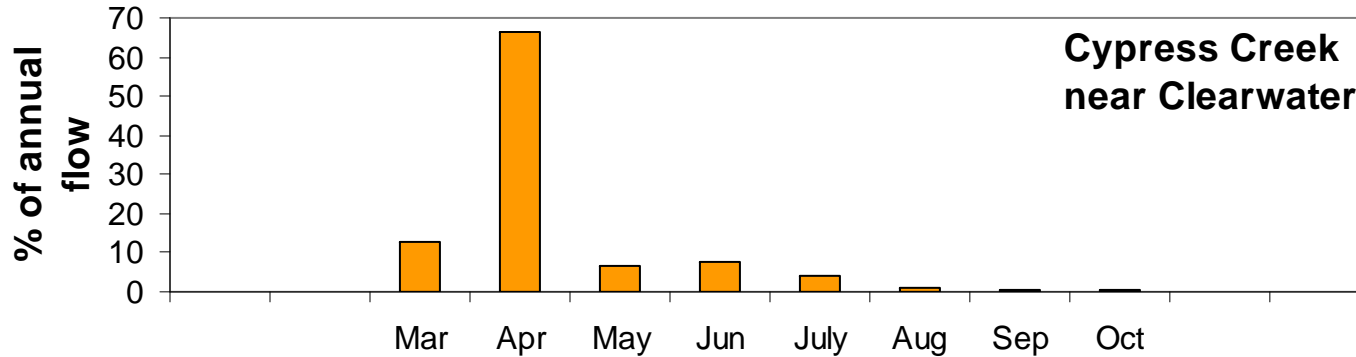
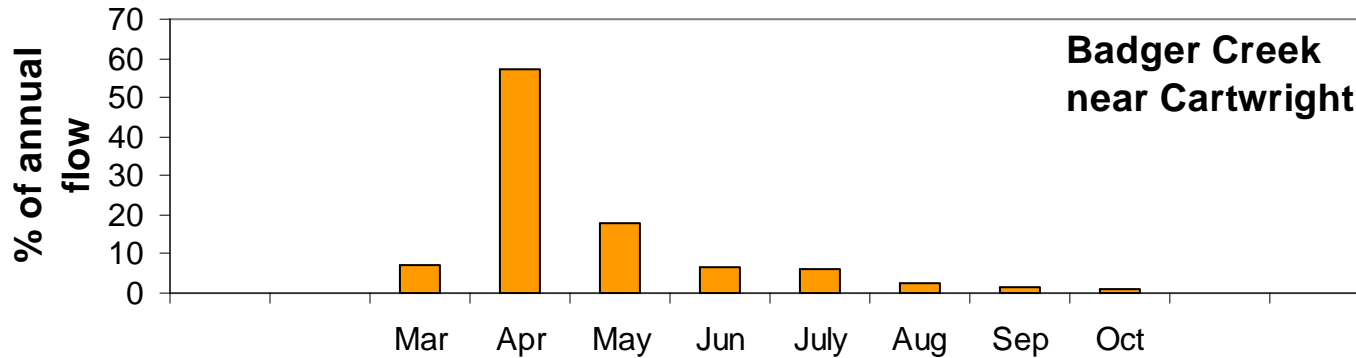
Annual flow volumes of Badger Creek near Cartwright



Annual flow volumes of Cypress Creek near Clearwater

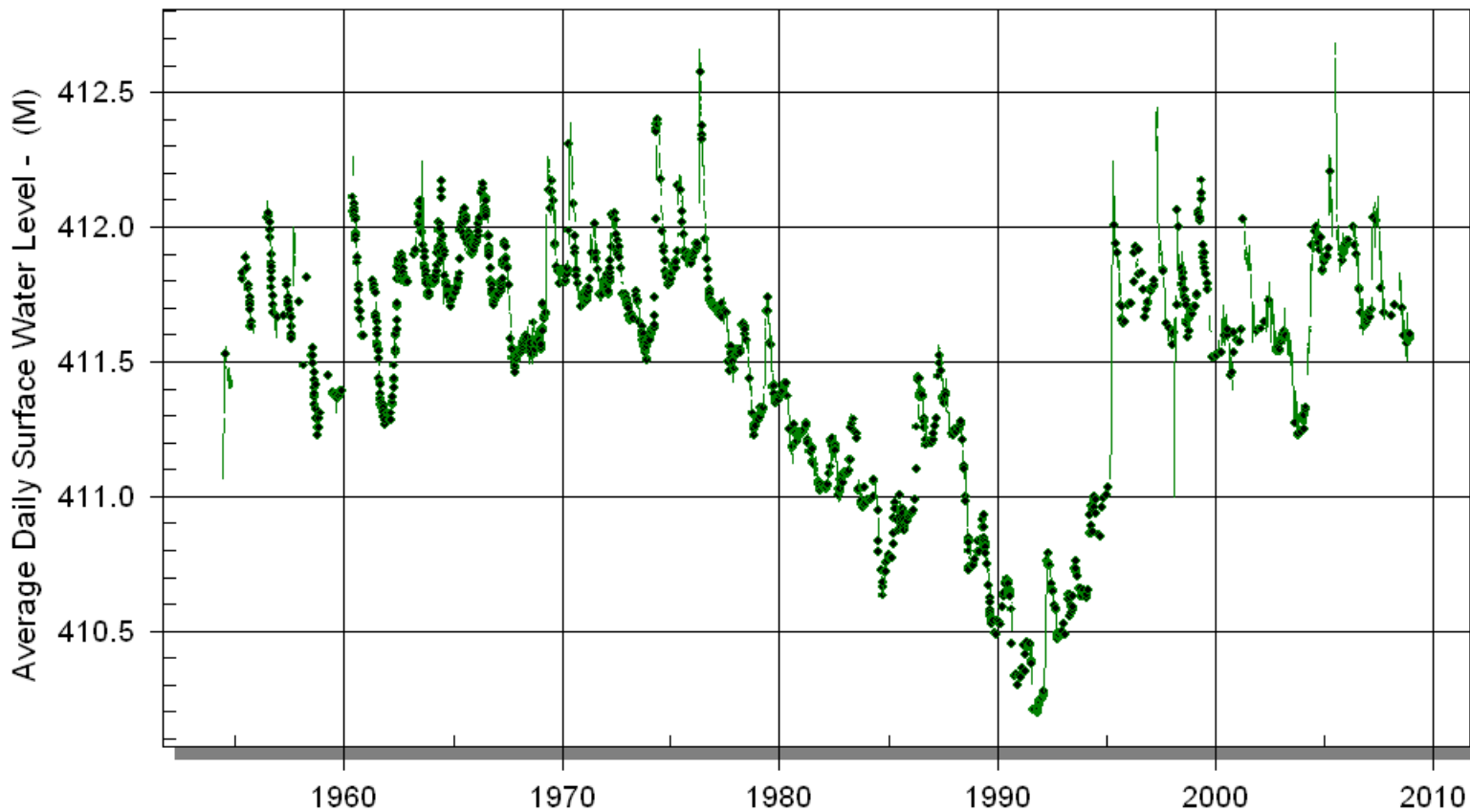


Monthly distributions of tributaries



Daily water level readings

PELICAN LAKE NEAR NINETTE Gauge 05OA802
DATA COLLECTED BY MANITOBA WATER STEWARDSHIP

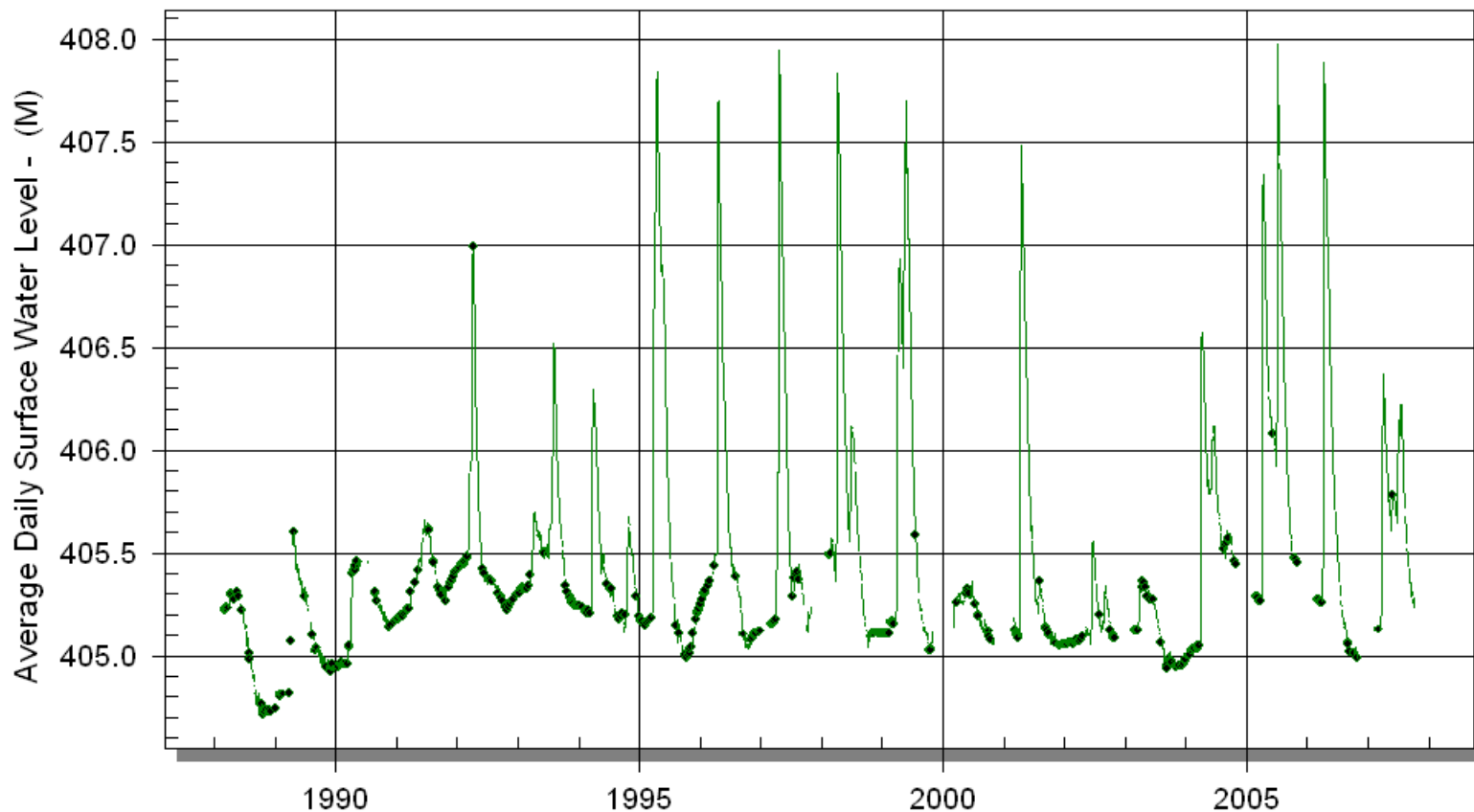


Prepared by Manitoba Water Stewardship 13 May 2009

Daily water level readings

ROCK LAKE NEAR GLENORA
WATER SURVEY OF CANADA DATA

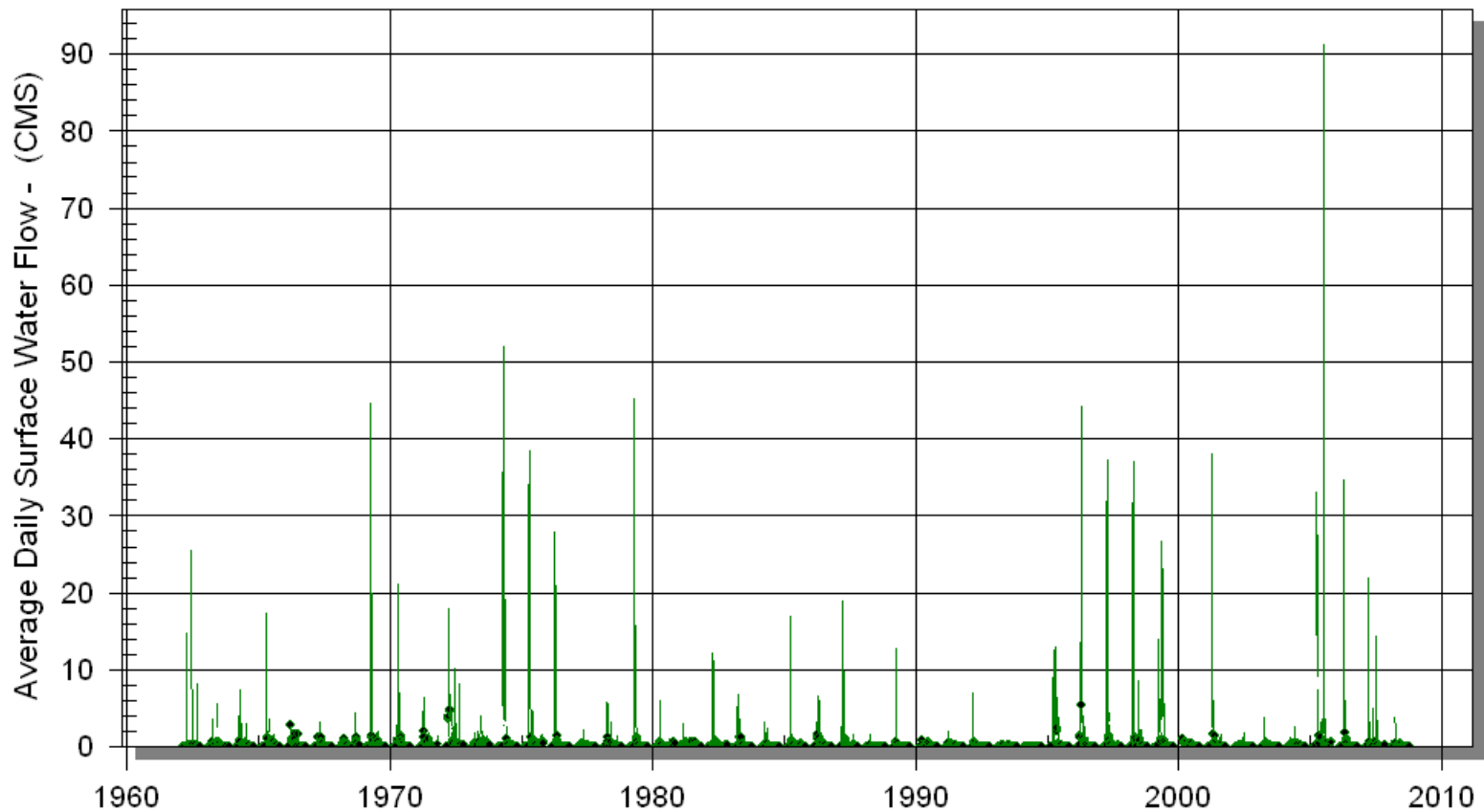
Gauge 05OB027



Prepared by Manitoba Water Stewardship 14 May 2009

Daily flows (1962 – 2008)

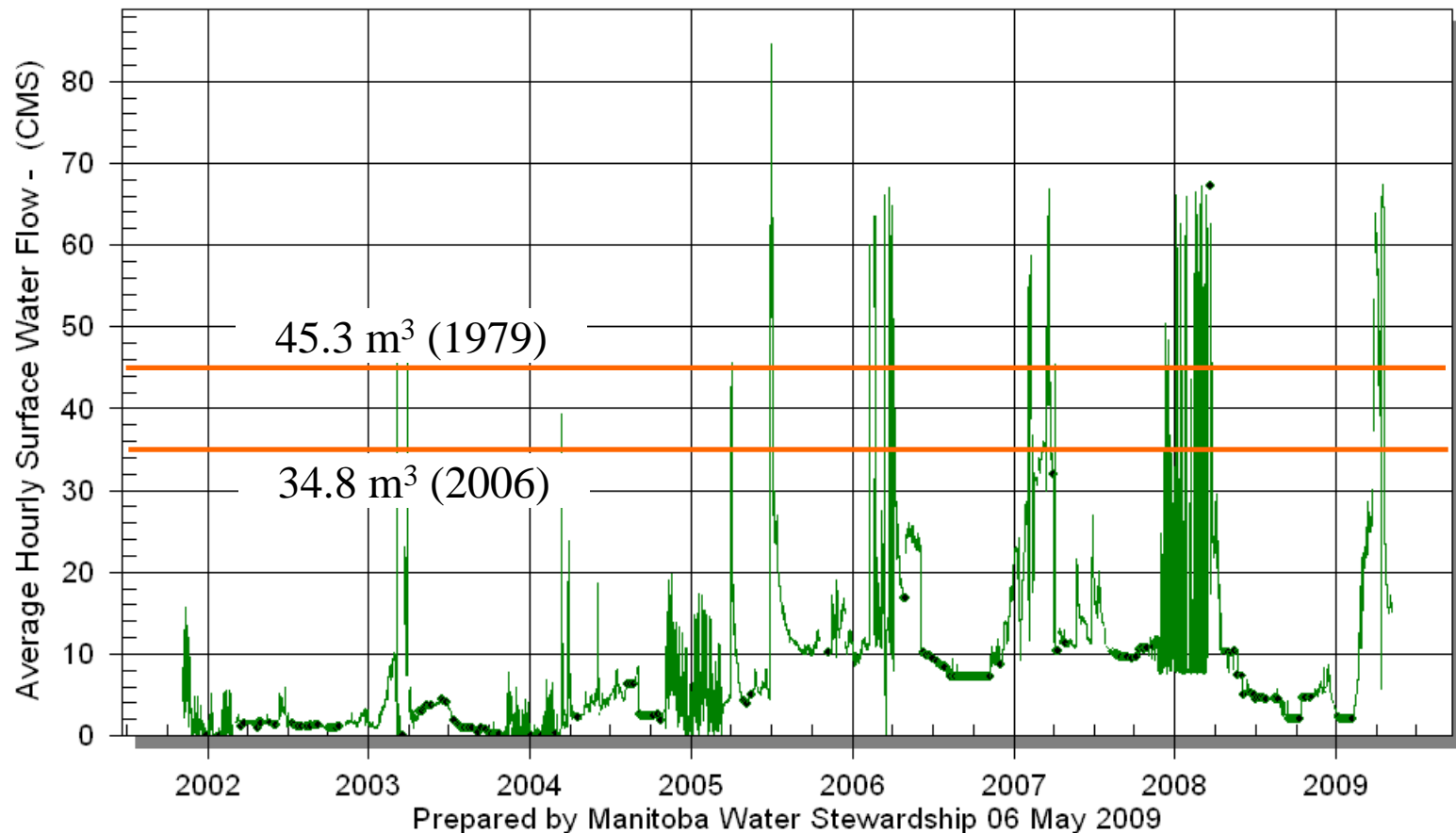
PEMBINA RIVER ABOVE LORNE LAKE WATER SURVEY OF CANADA DATA



Prepared by Manitoba Water Stewardship 06 May 2009

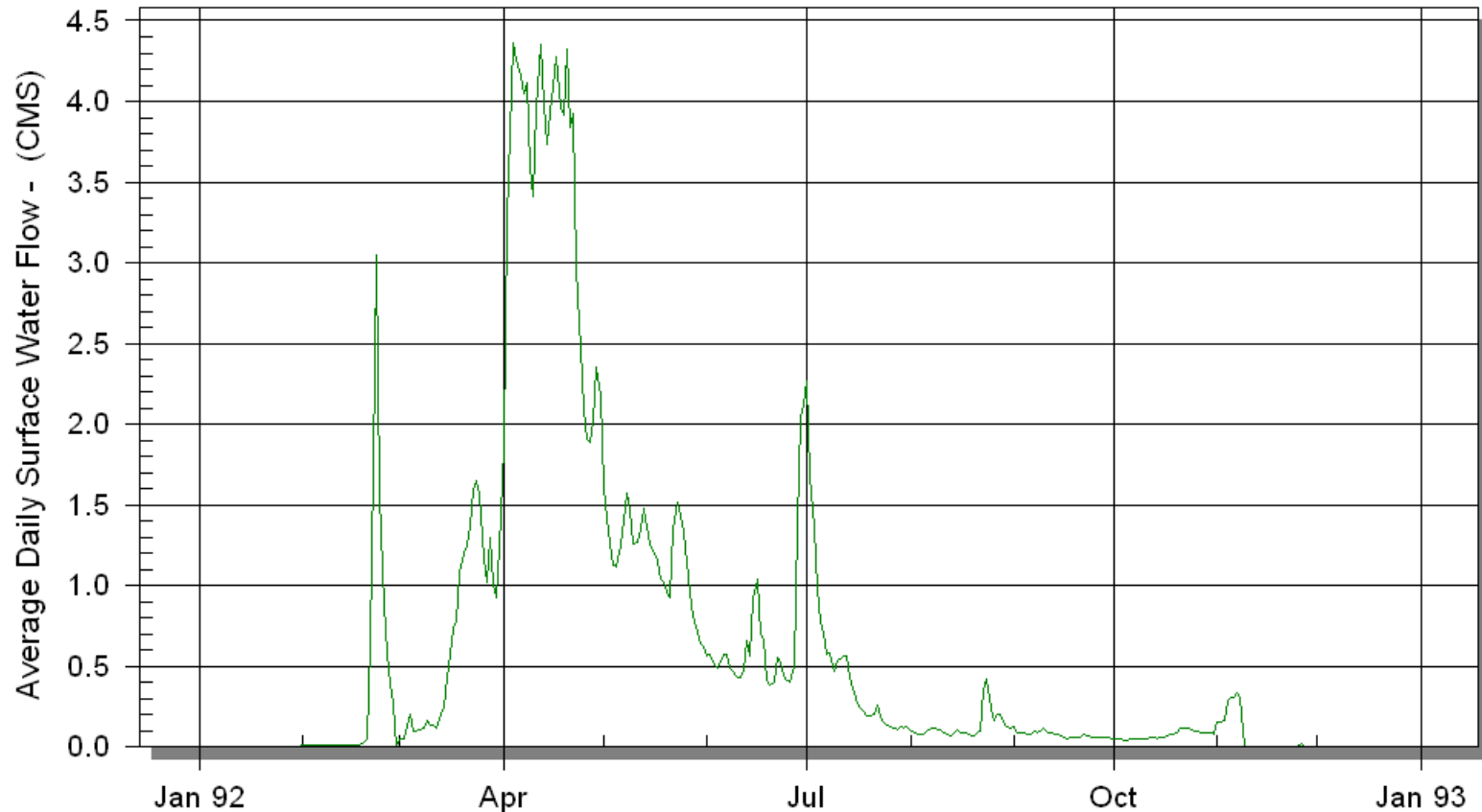
Hourly flows (2001 - 2009)

PEMBINA RIVER ABOVE LORNE LAKE WATER SURVEY OF CANADA DATA



Average daily flow (1962 – 2008)

PEMBINA RIVER ABOVE LORNE LAKE
WATER SURVEY OF CANADA DATA



Prepared by Manitoba Water Stewardship 06 May 2009

Template