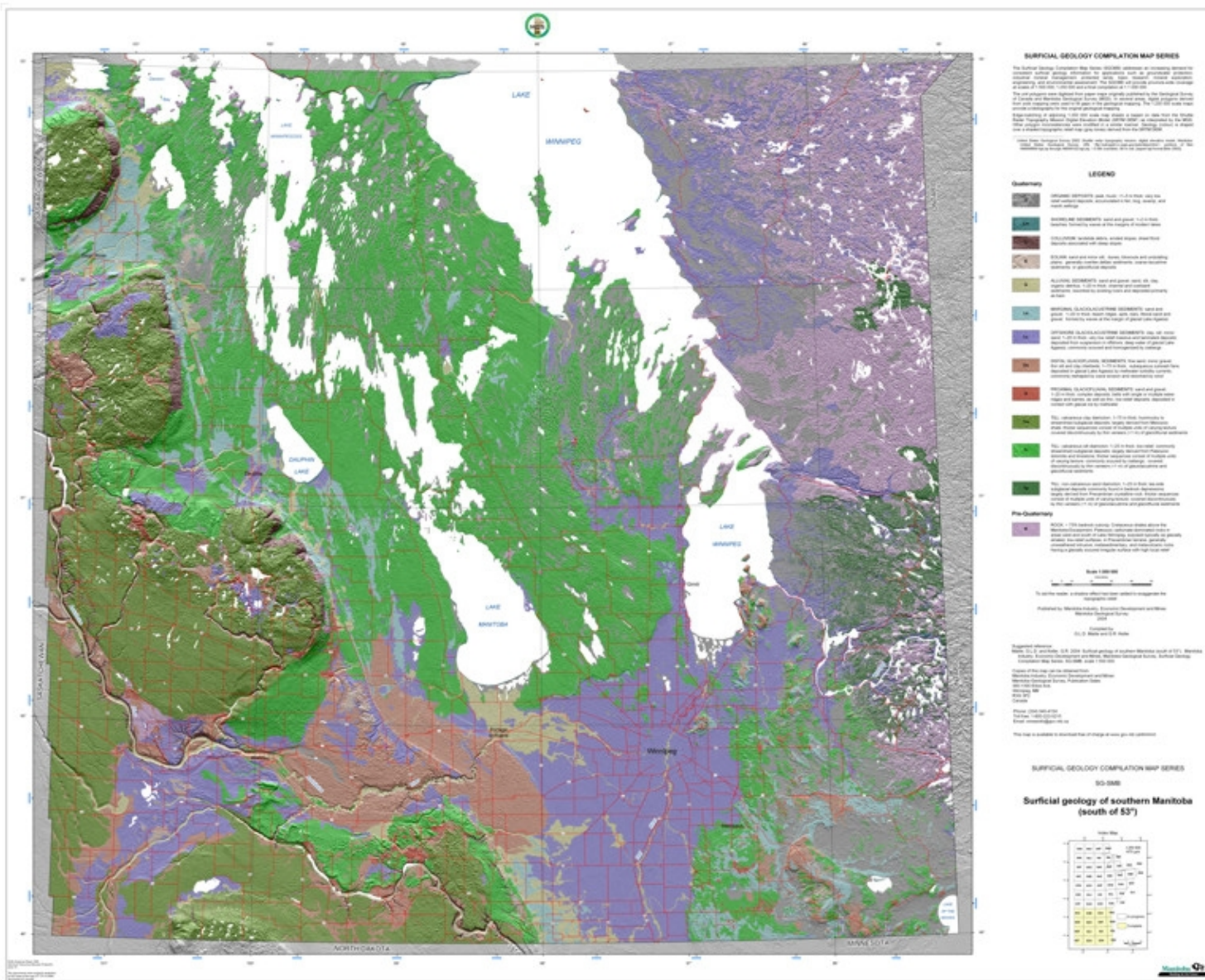


Western Watersheds: Shell River, Birdtail Creek, Little Saskatchewan River and Arrow – Oak River

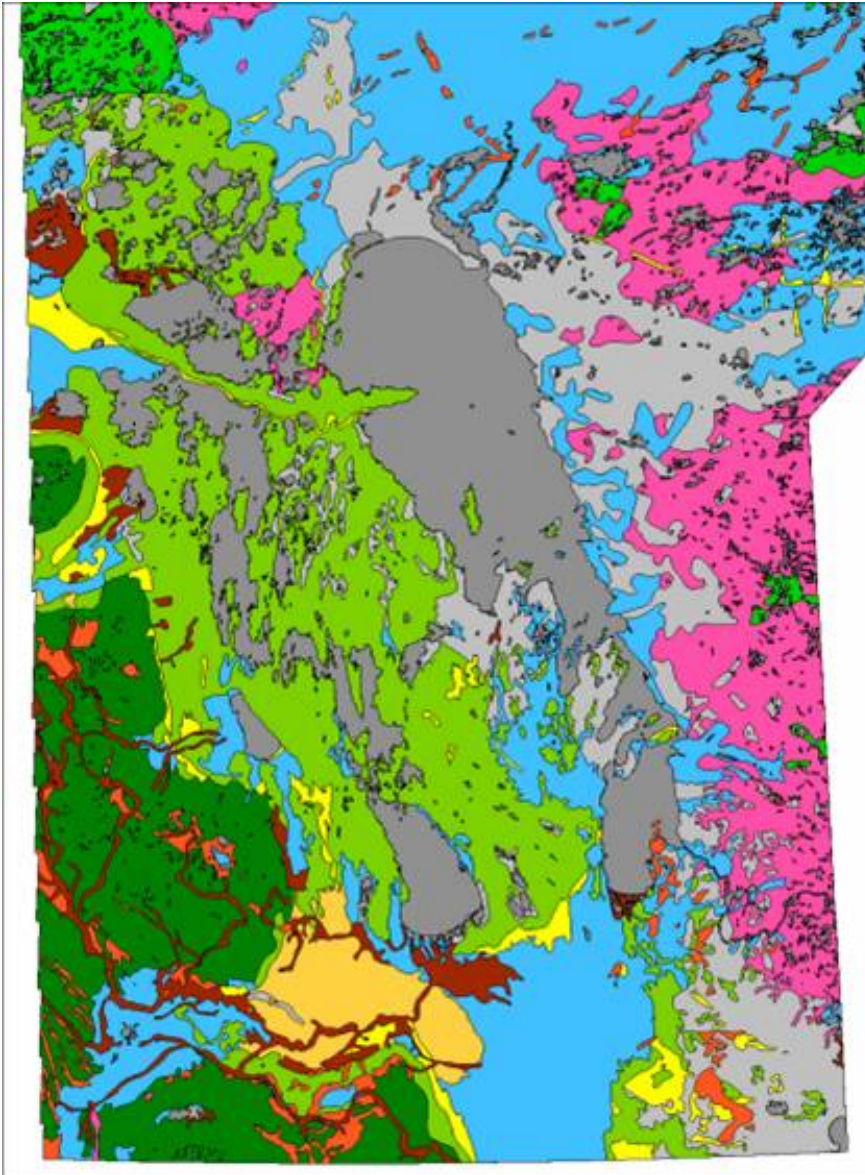
Manitoba Geological Survey



Quaternary Geology



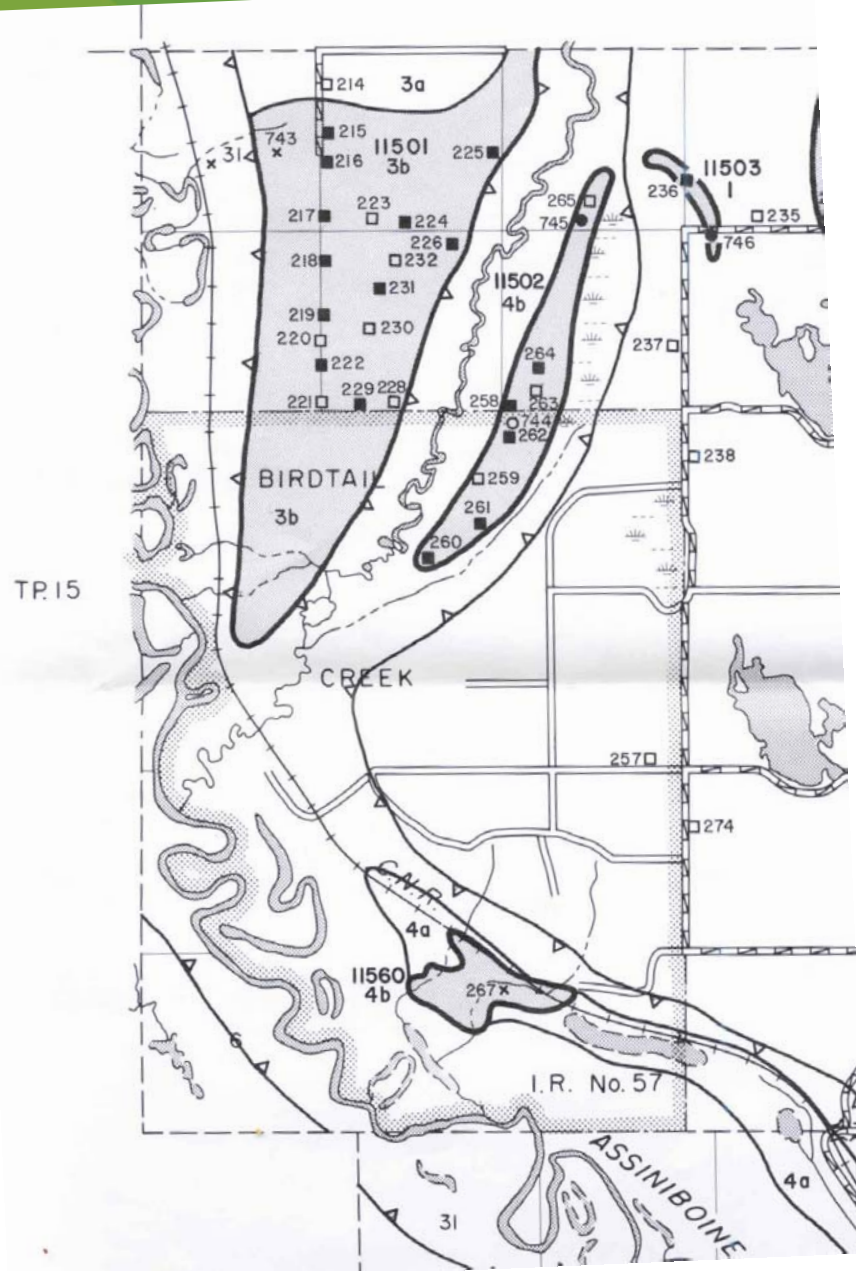
Surficial Map



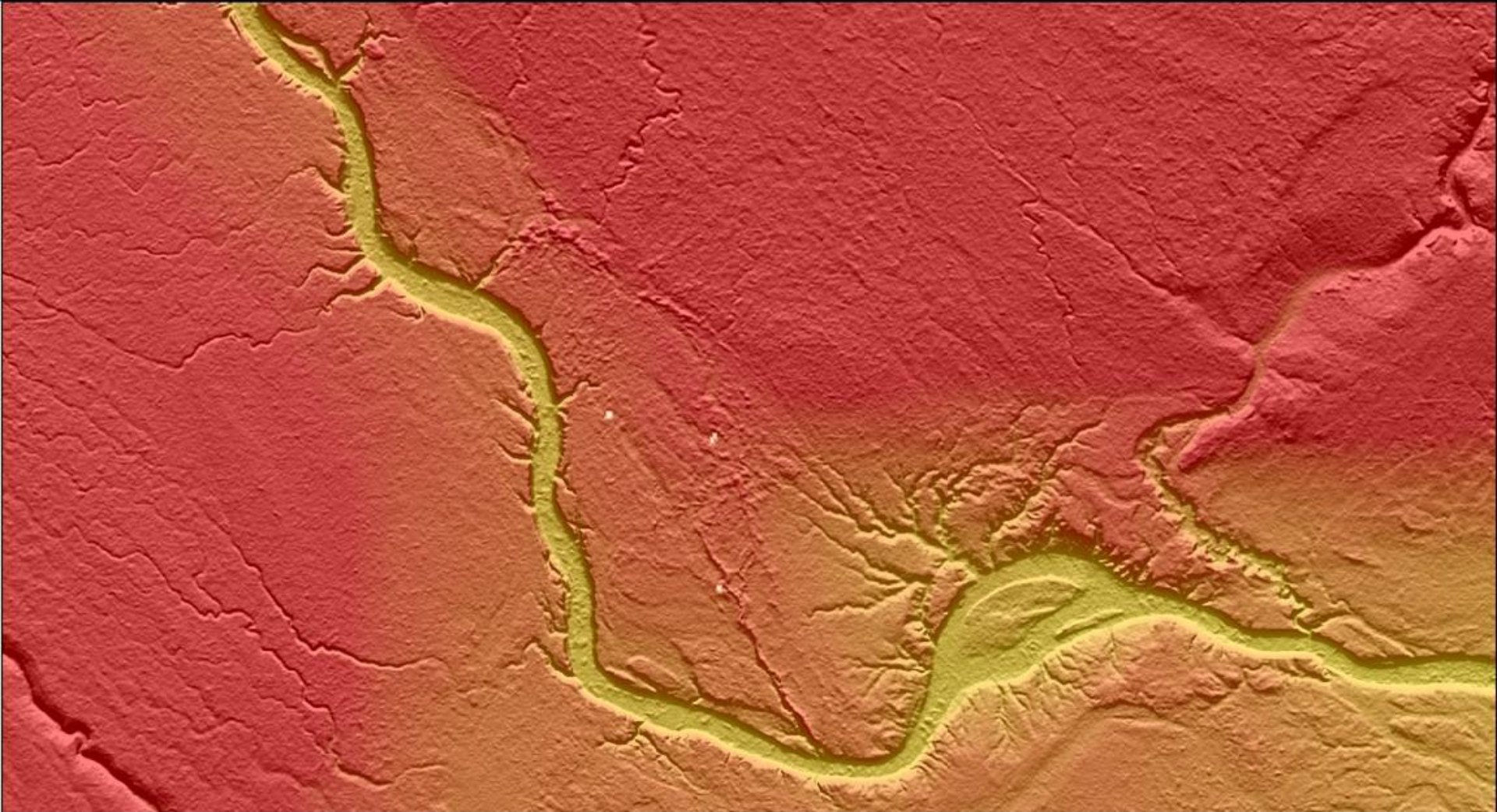
Riding Mountain Surficial Map



Aggregate Map

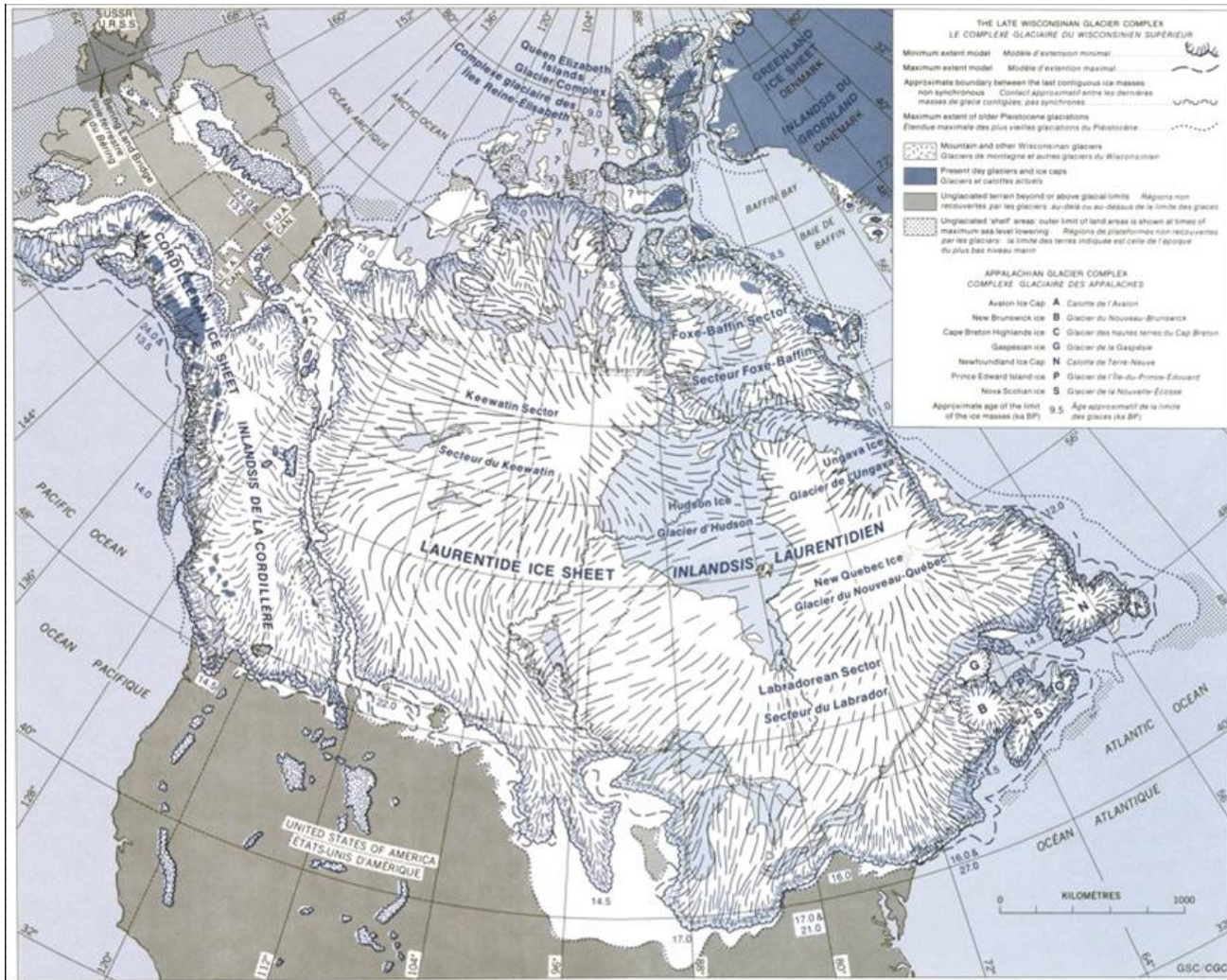


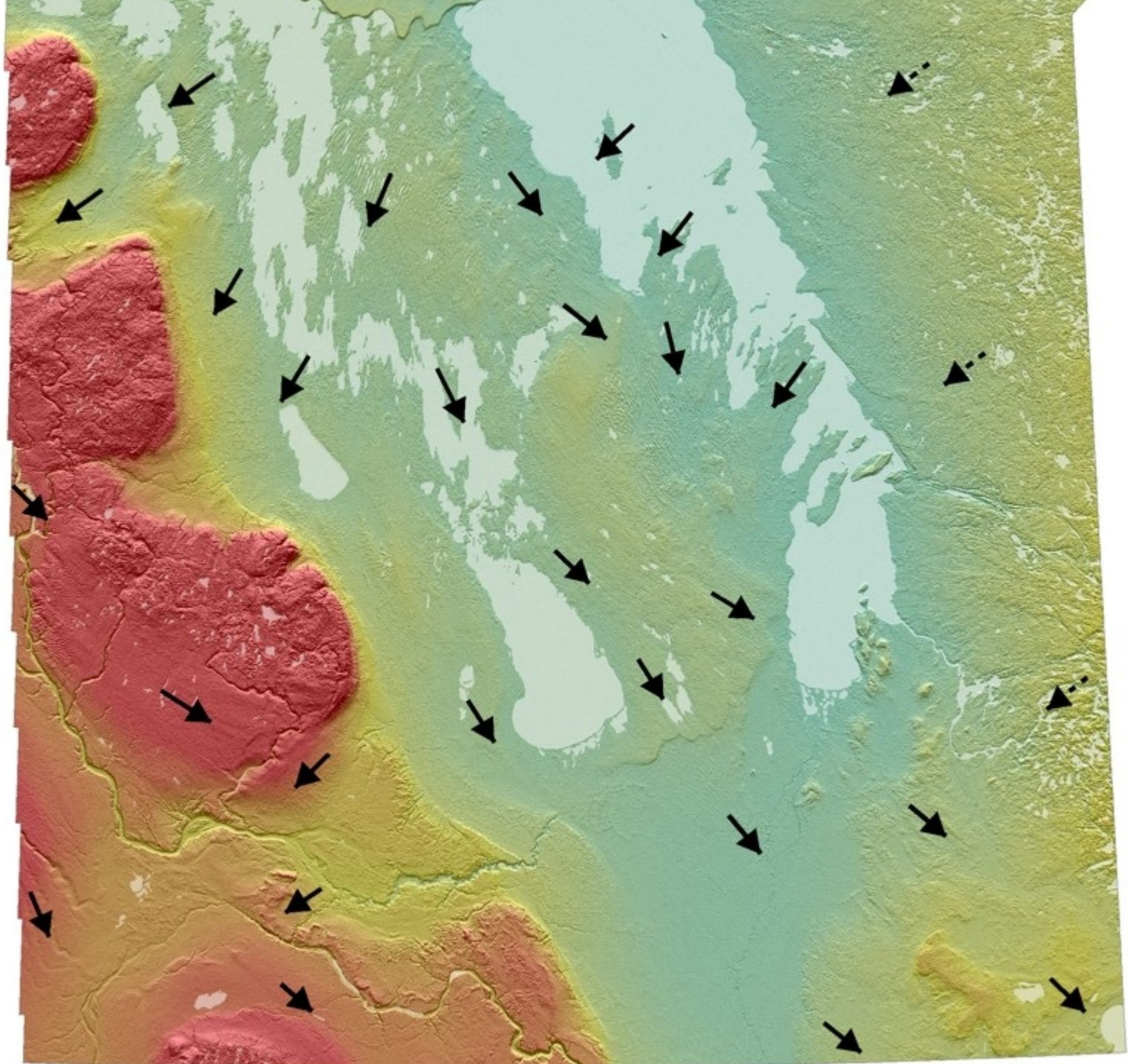
Elevation Map south



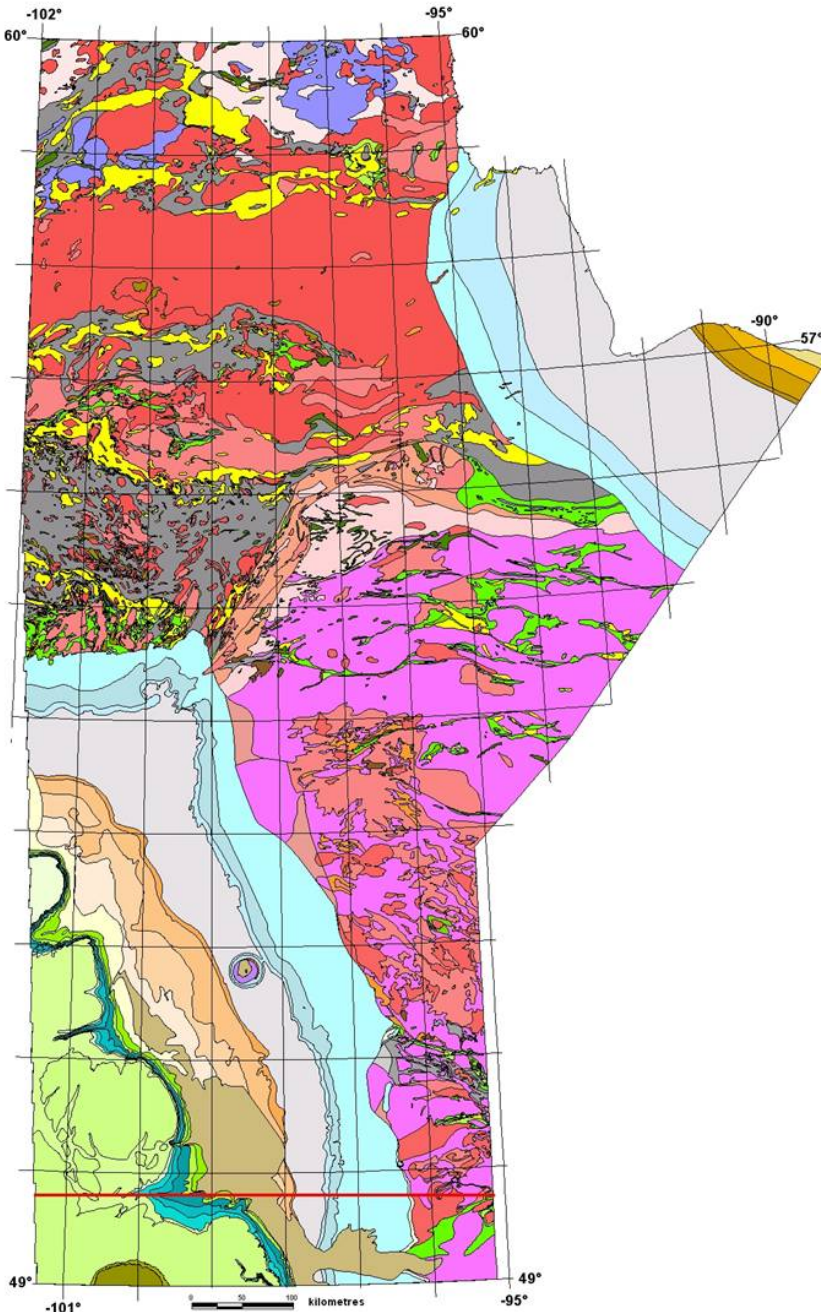
Airphoto







Manitoba Geology



Till Deposit



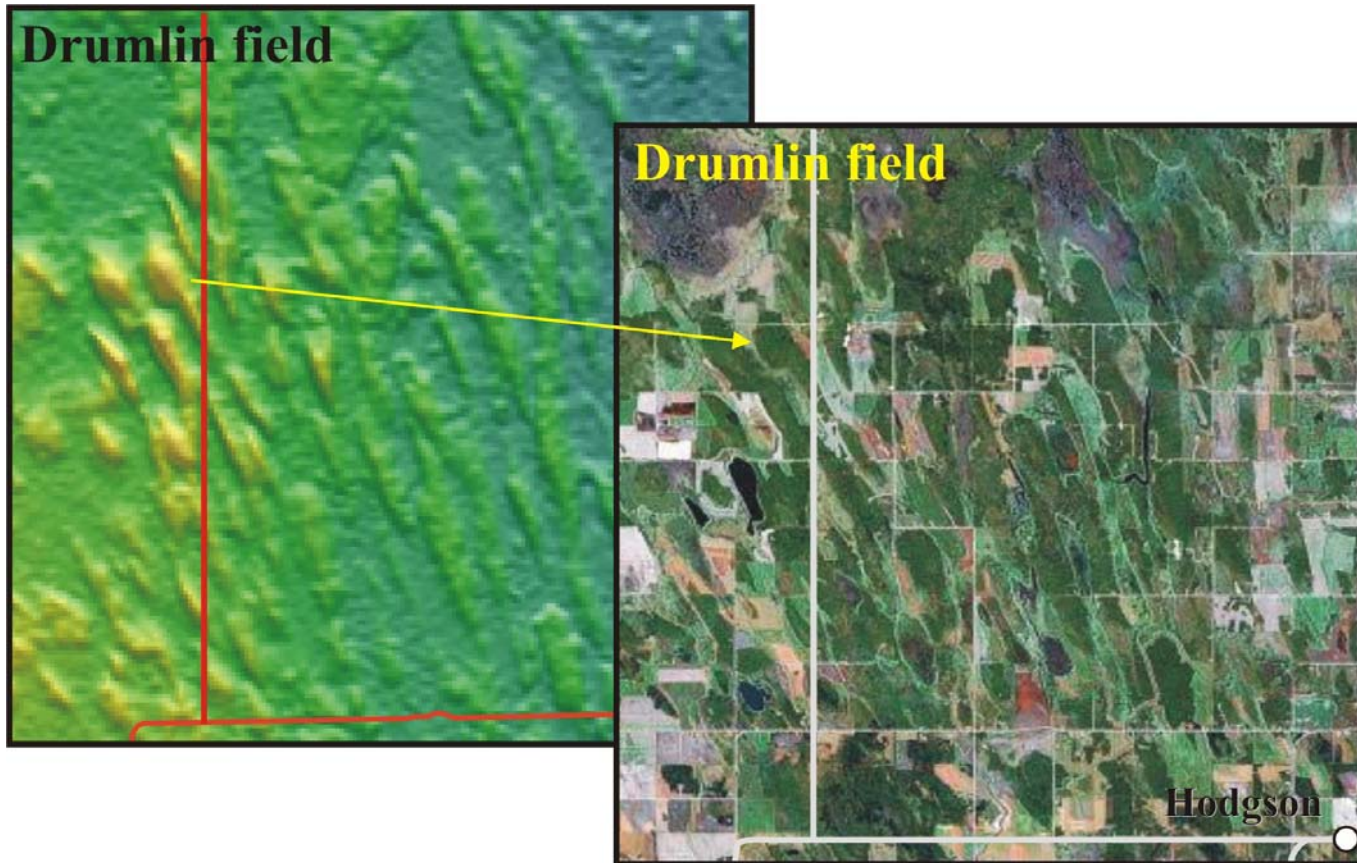
Till Deposits



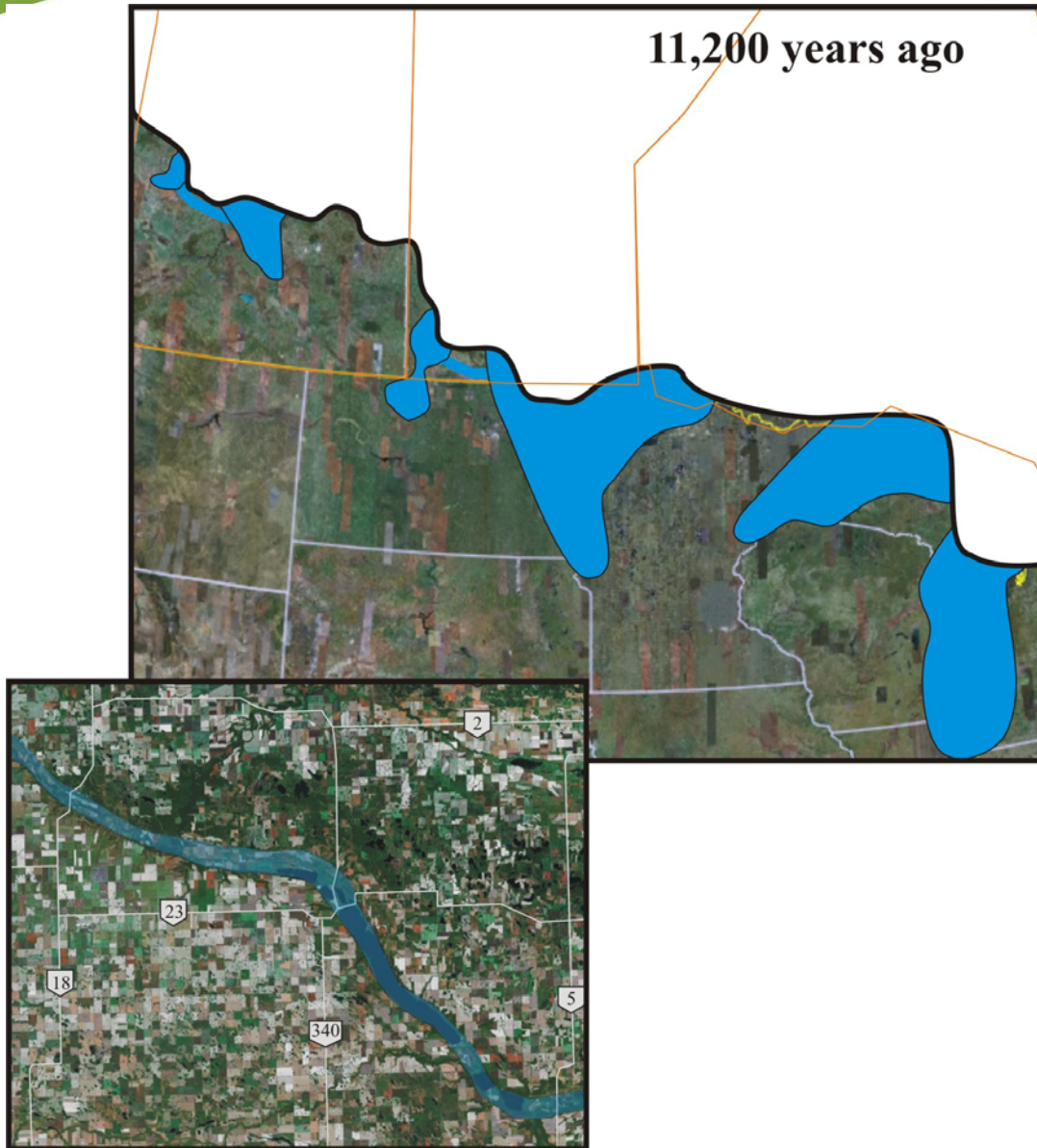
Striations



Drumlins



Glacial Lakes



Spillways

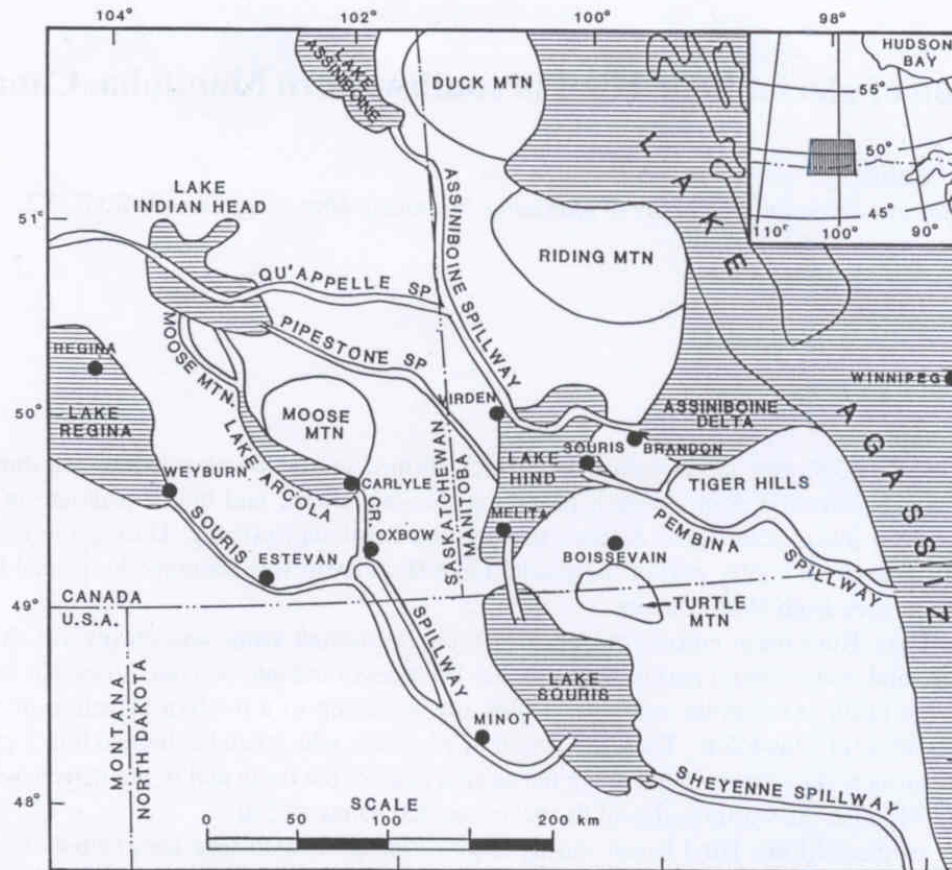
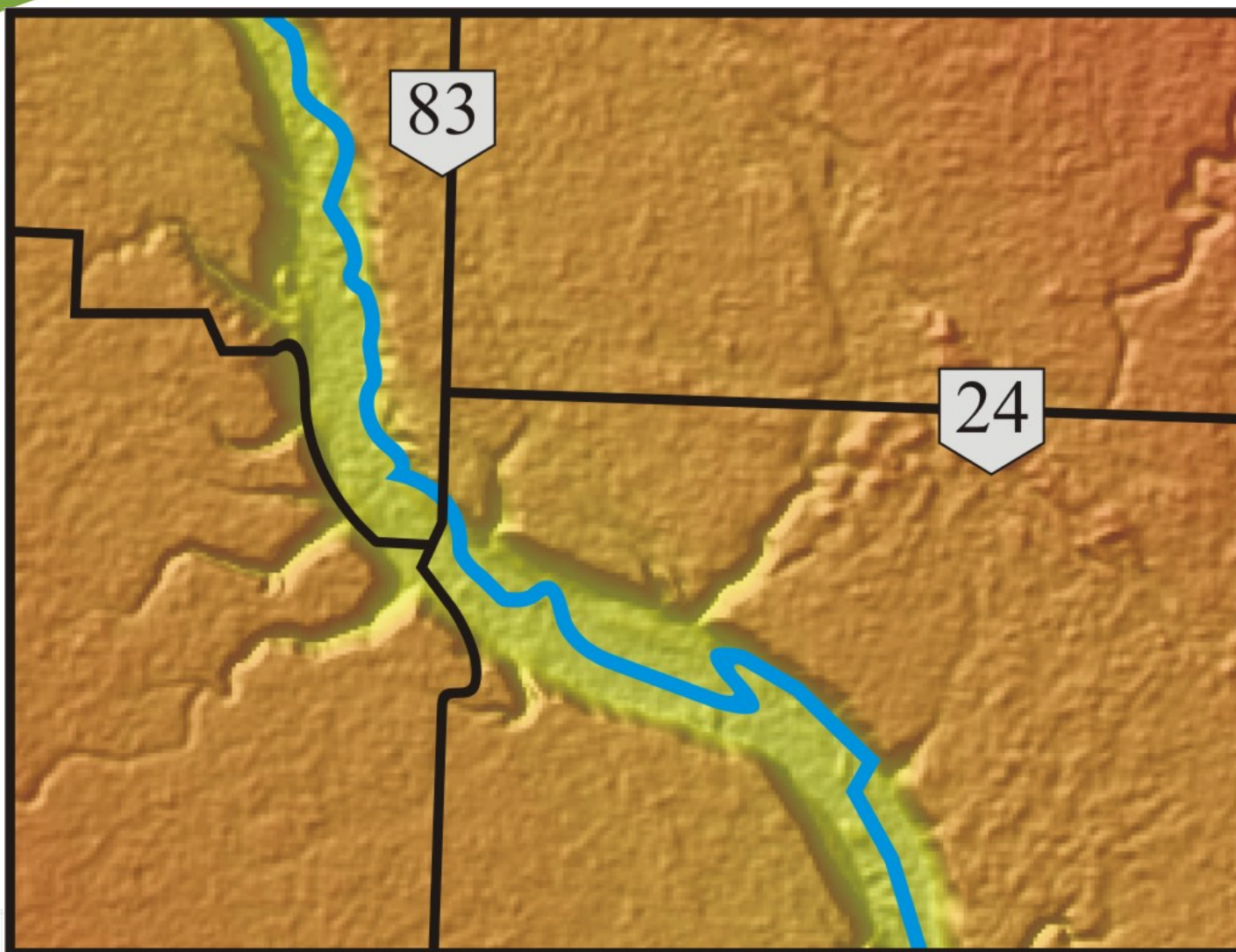
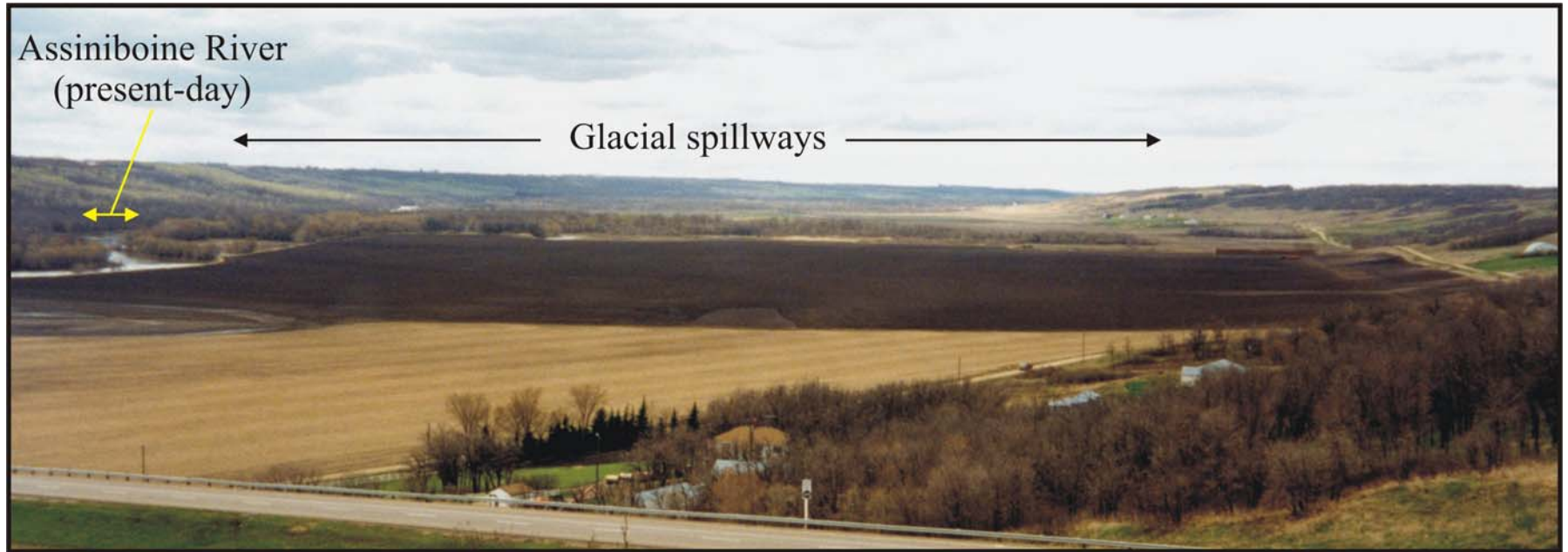


Figure 1. Location map and physiographic division of southwestern Manitoba, southeastern Saskatchewan, and northern North Dakota, showing glacial lakes, meltwater spillways, and uplands (Modified from Kehew & Teller, 1994; Klassen, 1979).

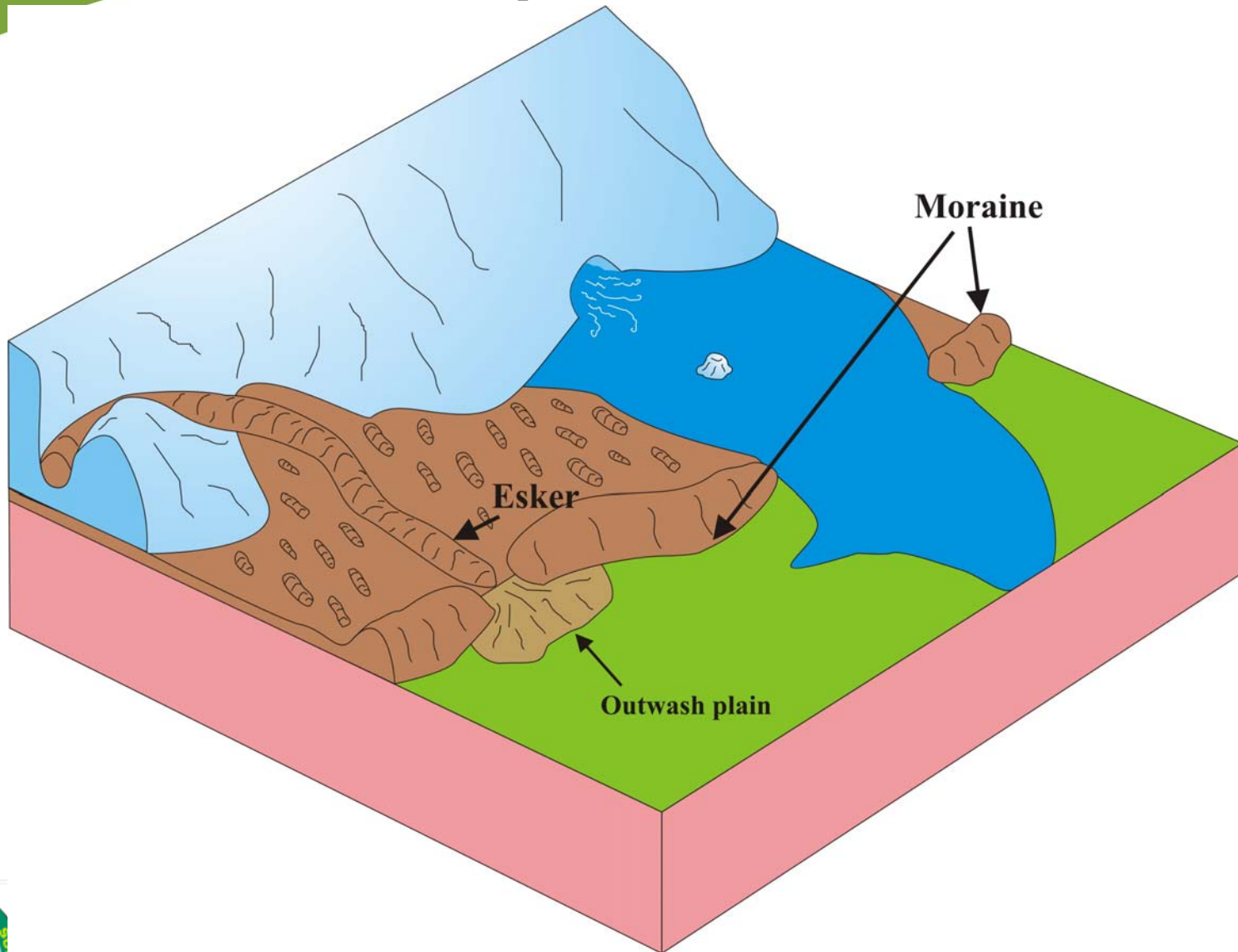
Spillway



Assiniboine Spillway



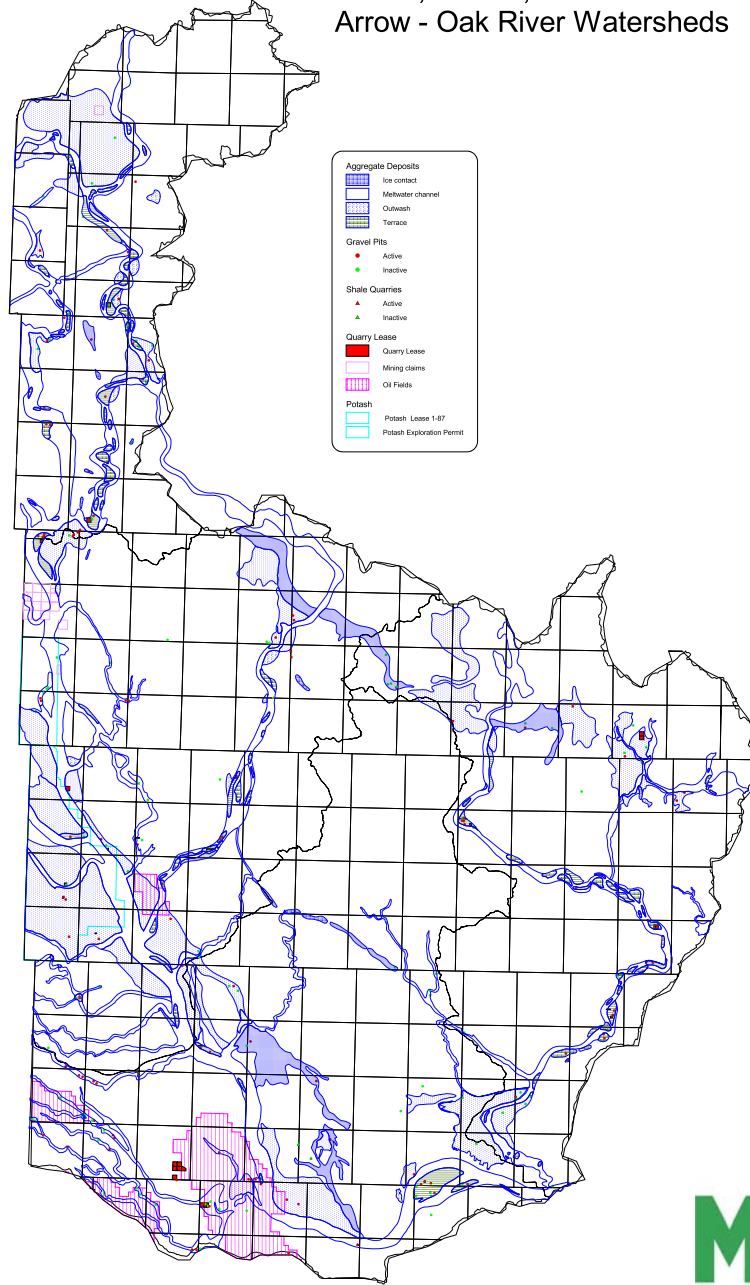
Depositional Environments



Riding Mountain Surficial Map



Shell River, Birdtail, Little Saskatchewan Arrow - Oak River Watersheds



Good Quality Aggregate Deposit



Poor Quality Aggregate



Glaciofluvial Deposit



Active Pit: sorted stockpiles



Poor Quality but in Use



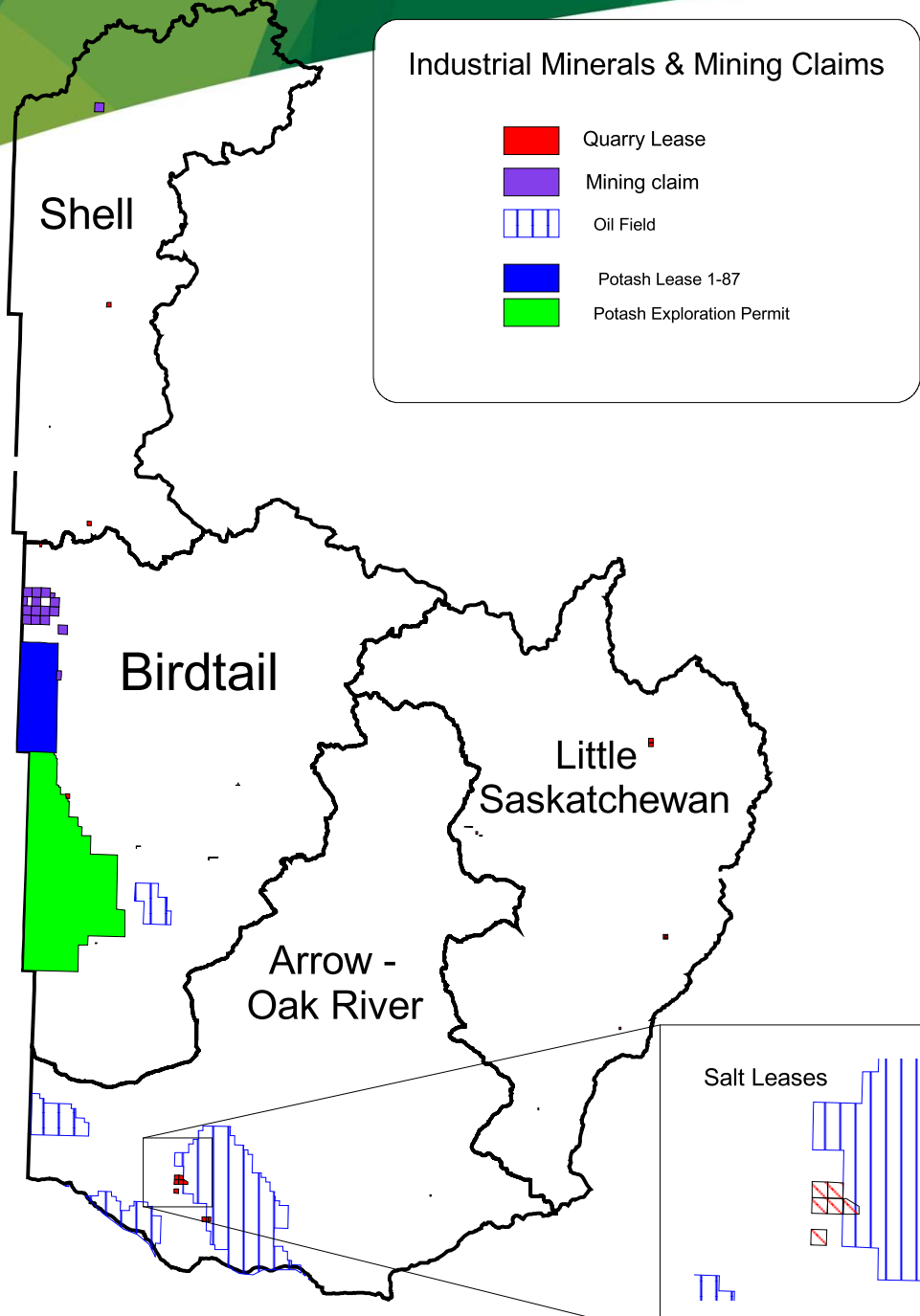
Water table



Rehabilitated Pit



Dispositions



Elevation Map of Area

