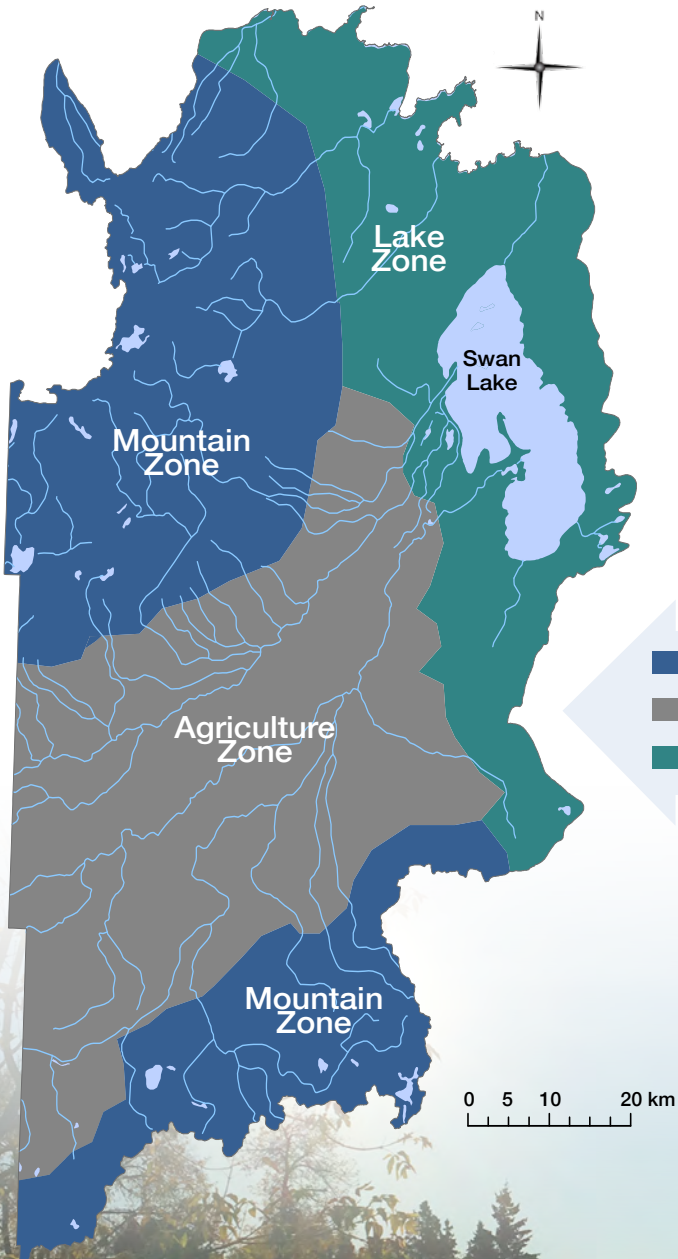


IMPROVING SURFACE WATER MANAGEMENT IN THE SWAN LAKE WATERSHED



To address land and water concerns, the Swan Lake Watershed Conservation District completed the Swan Lake Integrated Watershed Management Plan (IWMP). Surface water management, particularly in reducing flooding, erosion, and promoting sustainable agricultural practices is a key priority of this plan.

Why coordinate surface water?

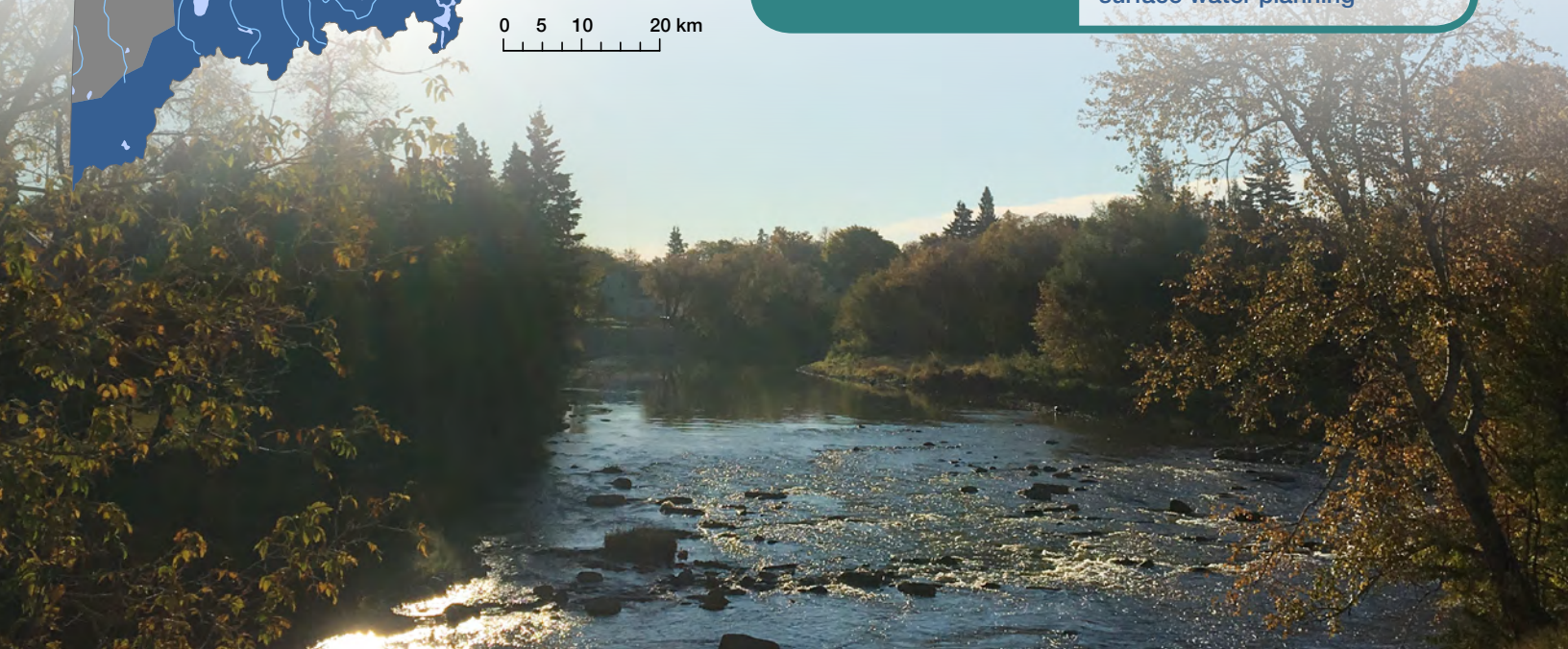
Management of surface water in the IWMP was designed to consider a holistic, watershed-based approach. Various concerns, including flood protection, agricultural productivity, aquatic health and water quality have been incorporated into the plan.

To determine where it matters most, and considering unique topography of the area, the watershed was divided into three surface water management areas:

- The mountain zone of the Duck Mountains and Porcupine Hills,
- The agricultural zone along valley of the watershed, and
- The lake zone, at the low-lying base of the watershed.

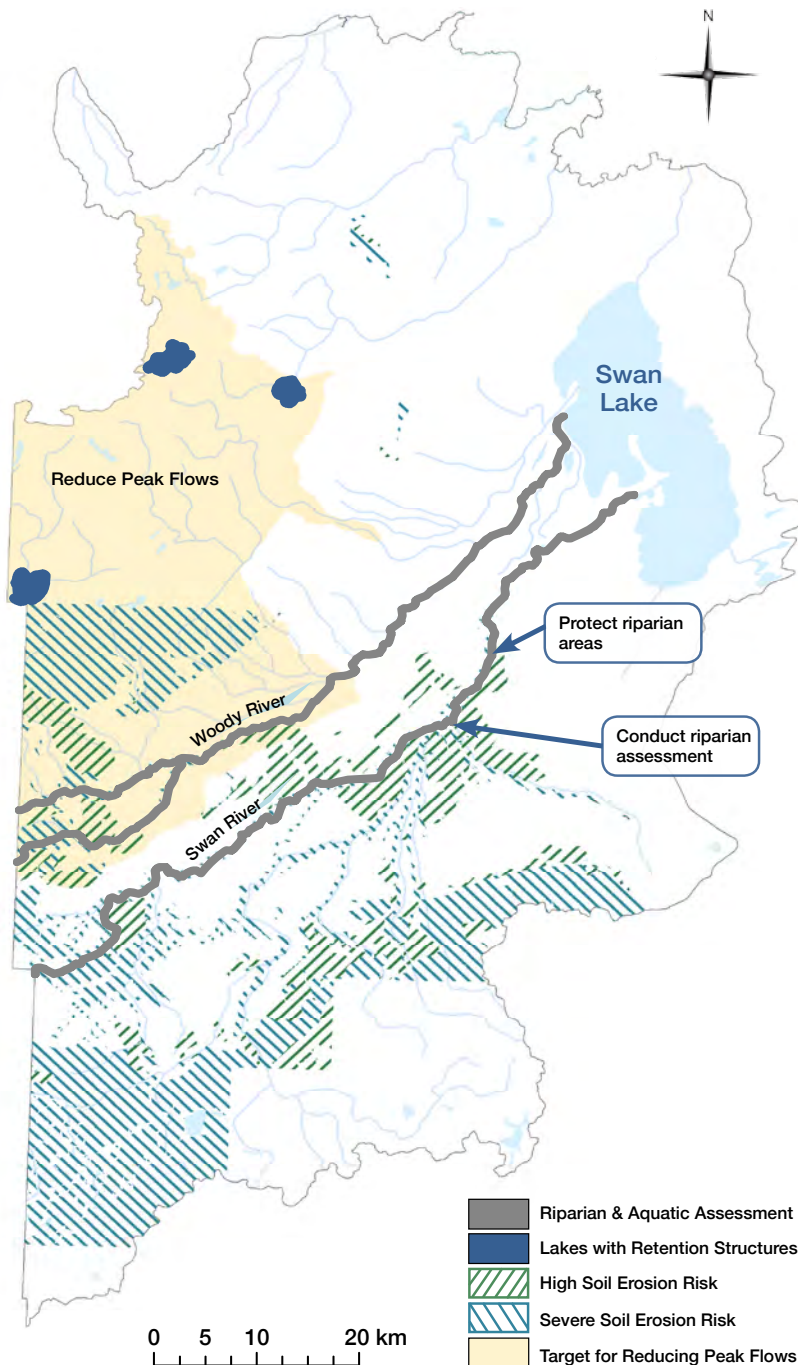
Over the next 10 years Swan Lake Watershed Conservation District will focus on surface water programming such as:

- Wetland restoration
- Riparian area protection
- Streambank erosion mitigation
- Shelterbelt preservation
- Promotion of watershed-based surface water planning



GOAL

IMPROVE SURFACE WATER QUALITY



Surface water considerations

Surface water management is an important goal for the watershed. Steep topography and soil variances contribute to erosion locally. Protecting natural water retention areas in the upstream regions of the watershed may help to reduce impacts of severe flood events for downstream residents.

How do we improve surface water management in the watershed?

- Implement water retention projects to reduce peak flows
- Restore degraded wetlands
- Preserve existing riparian areas and wetlands
- Preserve existing and plant new shelterbelts
- Provide incentives to restrict livestock access to waterways



For more information on surface water management and surface water quality programming, or for a copy of the complete Swan Lake Integrated Watershed Management Plan, please contact the Swan Lake Watershed Conservation District:

Swan Lake Watershed Conservation District

204-734-9550 • slwcd@mymts.net

Box 1858, 559 - 4th Avenue North, Swan River, Manitoba, R0L 1Z0

