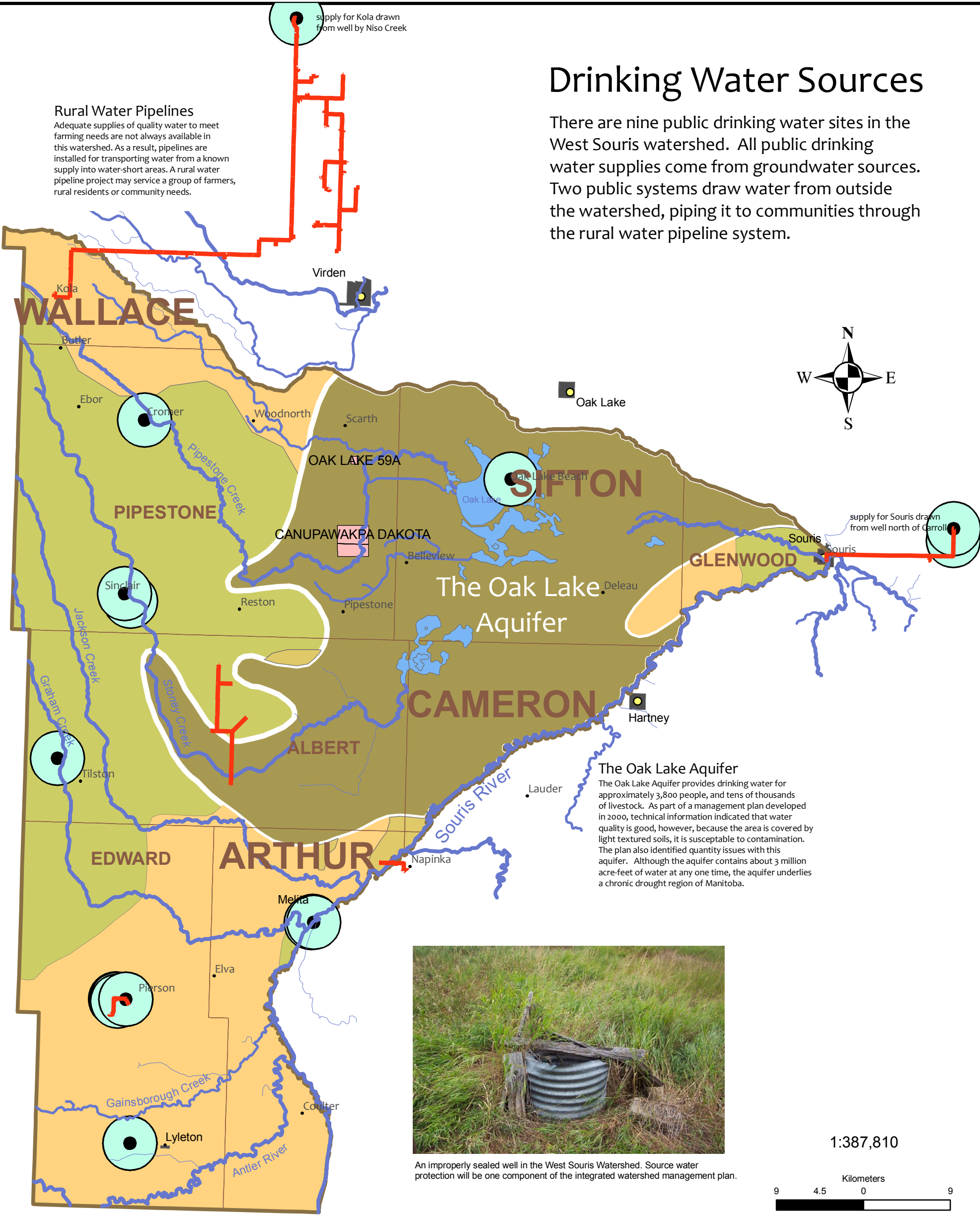


Drinking Water Sources

There are nine public drinking water sites in the West Souris watershed. All public drinking water supplies come from groundwater sources. Two public systems draw water from outside the watershed, piping it to communities through the rural water pipeline system.

Rural Water Pipelines

Adequate supplies of quality water to meet farming needs are not always available in this watershed. As a result, pipelines are installed for transporting water from a known supply into water-short areas. A rural water pipeline project may service a group of farmers, rural residents or community needs.



The Oak Lake Aquifer

The Oak Lake Aquifer provides drinking water for approximately 3,800 people, and tens of thousands of livestock. As part of a management plan developed in 2000, technical information indicated that water quality is good, however, because the area is covered by light textured soils, it is susceptible to contamination. The plan also identified quantity issues with this aquifer. Although the aquifer contains about 3 million acre-feet of water at any one time, the aquifer underlies a chronic drought region of Manitoba.

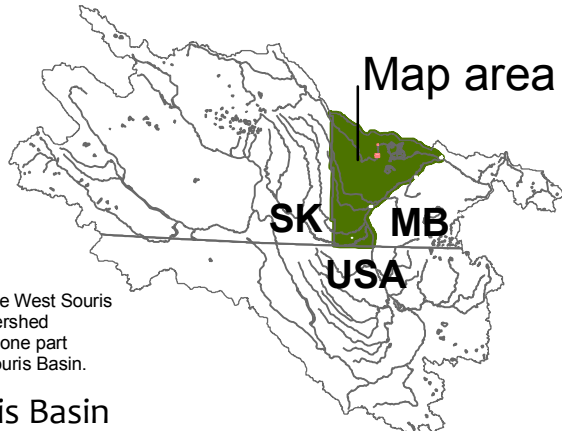


An improperly sealed well in the West Souris Watershed. Source water protection will be one component of the integrated watershed management plan.

Figure 1. Drinking water sources in the West Souris River watershed.

Legend

- Town
 - Public Drinking Water Source Intakes (>15 hook ups)
 - Rural Water Pipeline
 - River
 - West Souris Watershed Boundaries
 - First Nation Lands
 - Manitoba Municipal Boundaries
 - Urban Areas Manitoba
 - Lake
- ### Characteristics of Sand and Gravel Aquifers
- Areas With Very Few Widely Scattered Minor Sand and Gravel Aquifers
 - Canadian Shield
 - Lenses of Sand and Gravel
 - Major Buried Sand and Gravel
 - Thick and Extensive Unconfined Sand and Gravel
 - Thin Unconfined Sand



The study area for the West Souris River integrated watershed management plan is one part of the larger West Souris Basin.

West Souris Basin

Map Last Updated: March 18, 2009
 Projection: Universal Transverse Mercator Zone 14N
 Datum: North American 1983