

# Manitoba Mining, Exploration and Geoscience

2024 – 2025



# Mining, Oil and Gas Industry Overview

- \$3.4 billion in estimated value of production, a 45% increase since 2021
- \$1.7 billion in real value added, accounting for approximately 2.6 per cent of the province's real GDP and 4.3 per cent of all domestic merchandise exports
- Direct employment of approximately 3480 people, with an additional 2035 individuals employed by sector support activities
- 2023 estimated mineral exploration and deposit appraisal spending intentions at \$163.8 million
- 225 new wells drilled in 2022

## Major producers:

- Vale (nickel, copper, cobalt)
- Hudbay Minerals Inc. (gold, copper, zinc, silver)
- Sinomine Resources (lithium, cesium)
- Potash and Agri Development Corporation of Manitoba (potash)



## Manitoba's exploration and mining sector plays a key role in our province's economic prosperity.

Exploration and investment are the driving forces behind a sustainable minerals sector. Manitoba's quality geoscience data coupled with its rich natural resources forms a solid foundation for developing global economic growth opportunities in green energy and critical minerals.

Manitoba is home to a wealth of natural resources, world-class deposits and underexplored remote regions of high mineral potential, with 29 of the 31 minerals on Canada's 2021 Critical Minerals List found in our province. This includes lithium, graphite, nickel, cobalt, copper, and rare earth elements, which are the six minerals prioritized by the Canadian government as having the greatest opportunity to spur economic growth and fuel domestic capacity to support priority supply chains.

Exploring for the minerals necessary to support the expansion of clean technologies in renewable power and electrification will be key to meeting future global demands. Manitoba is rich with the critical mineral commodities needed to support green energy initiatives, including nickel, copper, zinc, lithium, cobalt, graphite, potash, platinum-group elements and silica sand. These commodities are essential components in the production of solar panels, electric vehicles and batteries, positioning Manitoba to be a worldwide leader in supplying the raw materials needed to drive the expansion of clean energy.

Manitoba remains focused on opportunities to support the transition to a clean, green economy in ways that create long-term economic growth, resilient communities, and positive socio-economic outcomes for all.

### Jump-starting Exploration

Manitoba continues to identify new ways to streamline permitting and provide stronger supports for the exploration industry. The province offers a multi-year permitting process for mineral exploration work permits outside of parks. Multi-year permits are valid for up to three years with the option for an additional two-year extension as long as the scope of work assessed and approved remains unchanged.

Manitoba contributes up to 6 per cent of the mining tax collected annually towards the Manitoba Mineral Development Fund, which continues to facilitate economic growth and job creation in the north. Communities, businesses, Indigenous groups, municipalities and the not-for-profit sector are eligible to apply for funding. Financial grant assistance from the Fund supports exploration activities as well as outreach and partnerships with First Nations for collaborative resource development.

Manitoba is committed to developing a strong critical minerals strategy, with a particular focus on creating good jobs for rural and northern Manitobans while building a low-carbon future. Manitoba's future strategy will aim to sustainably grow the critical minerals sector in partnership with industry and Indigenous Peoples, working together to ensure the road to success is open for all Manitobans.

### Engaging First Nations

The *Manitoba – First Nations Mineral Development Protocol* sets important parameters for how Crown-Indigenous consultations occur during all phases of the mining cycle, from exploration to development, operation to closure. This engagement will help to create certainty in order to advance projects in a timely manner and ensure First Nations can be actively involved in all phases of development projects within their traditional territories. The Protocol process is open to all Indigenous communities with immediate or potential mineral development opportunities.

### Working Together

The Manitoba government is prioritizing responsible resource development with stronger environmental protection for the benefit of all Manitobans. Manitoba will continue to engage in partnerships with Indigenous governments, northern communities, industry, and other stakeholders to advance sustainable economic development together.

Manitoba's mineral sector turns ideas into actions. Industry, associations, Indigenous and northern communities, idea-brokers, investors and explorers are moving ahead in ways that respect our land, natural resources and people, while sharing a common goal...

...to make Manitoba a worldwide leader in sustainable mineral exploration and investment.



# Manitoba has many advantages that make it an ideal location for business.



With close proximity to supply inputs and markets, an excellent transportation infrastructure, a skilled workforce and one of the greenest electricity grids in North America, Manitoba is an excellent place to explore and invest.

Manitoba has one of Canada's most diverse and dynamic economies. This diversity makes the province's economy one of the strongest and most stable in Canada.

Strategically located in the heart of North America, with abundant transportation connections via air, rail and road, Manitoba offers ready access to markets in the U.S. and beyond.

## Extremely competitive business costs

- International studies have consistently shown the competitiveness of business costs in Manitoba.
- Manitoba offers many business support programs and incentives to encourage and facilitate entrepreneurial, expansion and employment opportunities within the province.

## Low-cost, high-quality utilities

- Manitoba has abundant, environmentally sustainable hydroelectric capacity, high system reliability and superior power quality.
- Our industrial electricity rates are among the lowest in North America, as is the carbon intensity of our electric power production.

## Economical access to North American markets

- Manitoba's position at the heart of North America makes it a key part of the Mid-continent Trade Corridor, connecting Canada to a central North American market of 100 million people.
- Manitoba's central location provides excellent connections by air, road and rail which saves on travel and delivery time.
- Manitoba has three rail links to the United States, allowing ready access to the world's largest market and beyond.

## A well-educated, professional workforce

- Manitoba's workforce is known for its strong work ethic, quality and dedication. Low employee turnover levels result in reduced recruitment and training costs for employers.
- Almost 20% of Manitoba's population is comprised of immigrants, resulting in more than 100 languages spoken in the province. This diversity is a distinct advantage for businesses looking to make connections around the world.
- Flin Flon is home to the Northern Manitoba Mining Academy, which offers training in the mining- and construction-related trades to develop a knowledgeable, skilled and sustainable workforce for the industry.

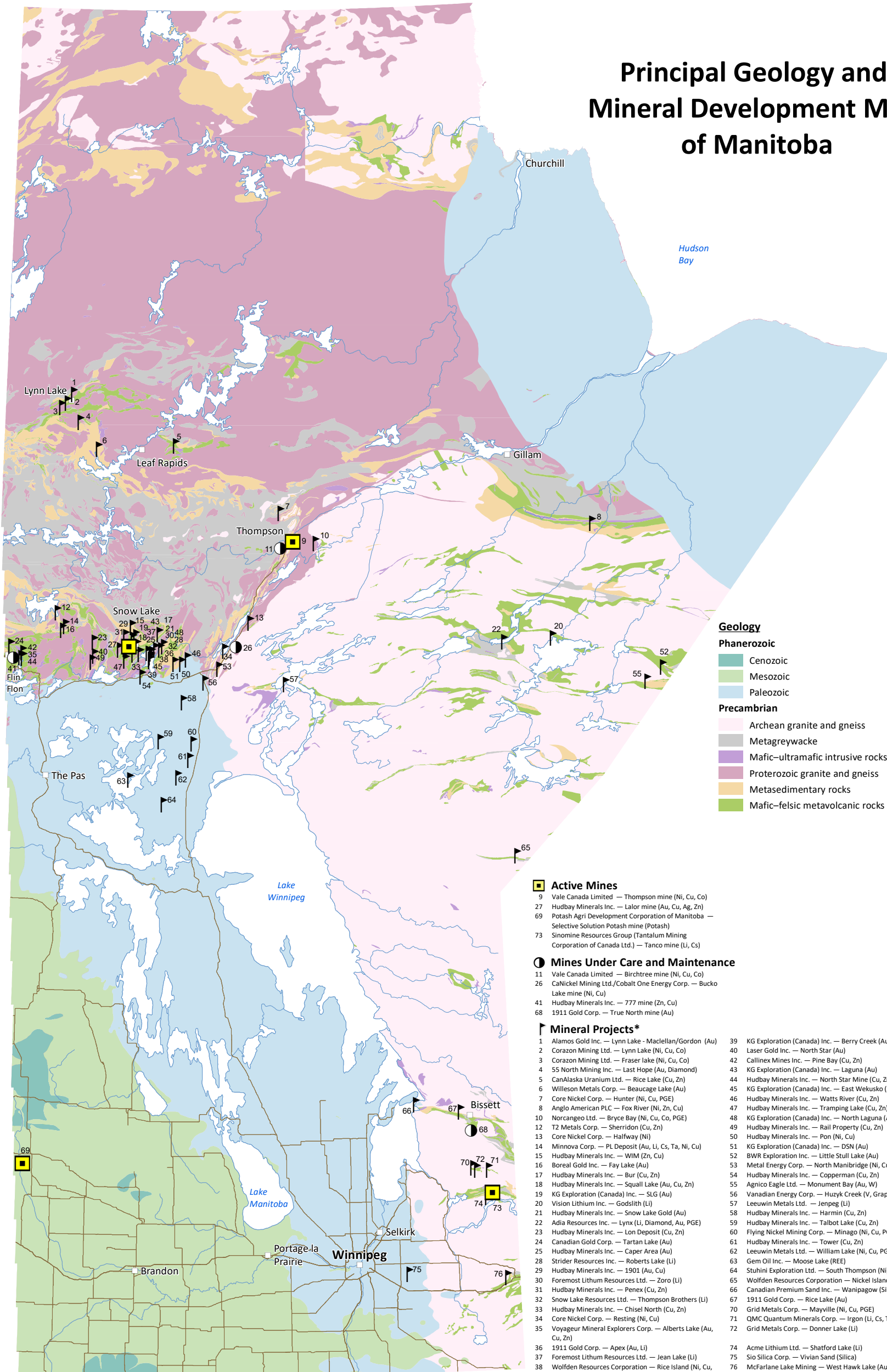


# Mineral Commodities in Manitoba

Manitoba's world-class mineral deposits are central to building a prosperous and robust clean economy, fostering sustainable and strong communities, and strengthening employment growth for all Manitobans. These deposits include gold, copper-zinc, nickel, lithium, rare metals, silica and potash. Along with the discovery of diamonds, Manitoba also has the potential to host different types of uranium deposits. Further details on these commodities can be found on our website at [manitoba.ca/iem/geo/commodity/](http://manitoba.ca/iem/geo/commodity/)



## Principal Geology and Mineral Development Map of Manitoba



- Geology**
- Phanerozoic**
- Cenozoic
  - Mesozoic
  - Paleozoic
- Precambrian**
- Archean granite and gneiss
  - Metagreywacke
  - Mafic-ultramafic intrusive rocks
  - Proterozoic granite and gneiss
  - Metasedimentary rocks
  - Mafic-felsic metavolcanic rocks

**Active Mines**

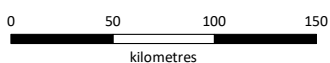
- 9 Vale Canada Limited — Thompson mine (Ni, Cu, Co)
- 27 Hudbay Minerals Inc. — Lalor mine (Au, Cu, Ag, Zn)
- 69 Potash Agri Development Corporation of Manitoba — Selective Solution Potash mine (Potash)
- 73 Sinomine Resources Group (Tantalum Mining Corporation of Canada Ltd.) — Tanco mine (Li, Cs)

**Mines Under Care and Maintenance**

- 11 Vale Canada Limited — Birchtree mine (Ni, Cu, Co)
- 26 CaNickel Mining Ltd./Cobalt One Energy Corp. — Bucko Lake mine (Ni, Cu)
- 41 Hudbay Minerals Inc. — 777 mine (Zn, Cu)
- 68 1911 Gold Corp. — True North mine (Au)

**Mineral Projects\***

- |   |  |
|---|--|
| 1 Alamos Gold Inc. — Lynn Lake - Maclellan/Gordon (Au)          | 39 KG Exploration (Canada) Inc. — Berry Creek (Au)           |
| 2 Corazon Mining Ltd. — Lynn Lake (Ni, Cu, Co)                  | 40 Laser Gold Inc. — North Star (Au)                         |
| 3 Corazon Mining Ltd. — Fraser Lake (Ni, Cu, Co)                | 42 Callinex Mines Inc. — Pine Bay (Cu, Zn)                   |
| 4 55 North Mining Inc. — Last Hope (Au, Diamond)                | 43 KG Exploration (Canada) Inc. — Laguna (Au)                |
| 5 CanAlaska Uranium Ltd. — Bryce Bay (Ni, Cu, PGE)              | 44 Hudbay Minerals Inc. — North Star Mine (Cu, Zn)           |
| 6 Willeson Metals Corp. — Beaucauge Lake (Au)                   | 45 KG Exploration (Canada) Inc. — East Wekusko (Au)          |
| 7 Core Nickel Corp. — Hunter (Ni, Cu, PGE)                      | 46 Hudbay Minerals Inc. — Watts River (Cu, Zn)               |
| 8 Anglo American PLC — Fox River (Ni, Zn, Cu)                   | 47 Hudbay Minerals Inc. — Tramping Lake (Cu, Zn)             |
| 10 Norcangeo Ltd. — Bryce Bay (Ni, Cu, Co, PGE)                 | 48 KG Exploration (Canada) Inc. — North Laguna (Au)          |
| 12 T2 Metals Corp. — Sherridon (Cu, Zn)                         | 49 Hudbay Minerals Inc. — Rail Property (Cu, Zn)             |
| 13 Core Nickel Corp. — Halfway (Ni)                             | 50 Hudbay Minerals Inc. — Pon (Ni, Cu)                       |
| 14 Minnova Corp. — PL Deposit (Au, Li, Cs, Ta, Ni, Cu)          | 51 KG Exploration (Canada) Inc. — DSN (Au)                   |
| 15 Hudbay Minerals Inc. — WIM (Zn, Cu)                          | 52 BWR Exploration Inc. — Little Stull Lake (Au)             |
| 16 Boreal Gold Inc. — Fay Lake (Au)                             | 53 Metal Energy Corp. — North Manibridge (Ni, Cu, PGE)       |
| 17 Hudbay Minerals Inc. — Bur (Cu, Zn)                          | 54 Hudbay Minerals Inc. — Copperman (Cu, Zn)                 |
| 18 Hudbay Minerals Inc. — Squall Lake (Au, Cu, Zn)              | 55 Agnico Eagle Ltd. — Monument Bay (Au, W)                  |
| 19 KG Exploration (Canada) Inc. — SLG (Au)                      | 56 Vanadian Energy Corp. — Huzyk Creek (V, Graphite)         |
| 20 Vision Lithium Inc. — Godslith (Li)                          | 57 Leeuwin Metals Ltd. — Jenpeg (Li)                         |
| 21 Hudbay Minerals Inc. — Snow Lake Gold (Au)                   | 58 Hudbay Minerals Inc. — Harmin (Cu, Zn)                    |
| 22 Adia Resources Inc. — Lynn (Li, Diamond, Au, PGE)            | 59 Hudbay Minerals Inc. — Talbot Lake (Cu, Zn)               |
| 23 Hudbay Minerals Inc. — Lon Deposit (Cu, Zn)                  | 60 Flying Nickel Mining Corp. — Minago (Ni, Cu, PGE, Silica) |
| 24 Canadian Gold Corp. — Tartan Lake (Au)                       | 61 Hudbay Minerals Inc. — Tower (Cu, Zn)                     |
| 25 Hudbay Minerals Inc. — Capers Area (Au)                      | 62 Leeuwin Metals Ltd. — William Lake (Ni, Cu, PGE)          |
| 28 Strider Resources Inc. — Roberts Lake (Li)                   | 63 Gem Oil Inc. — Moose Lake (REE)                           |
| 29 Hudbay Minerals Inc. — 1901 (Au, Cu)                         | 64 Stuhini Exploration Ltd. — South Thompson (Ni)            |
| 30 Foremost Lithium Resources Ltd. — Zoro (Li)                  | 65 Wolfden Resources Corporation — Nickel Island (Ni, Cu)    |
| 31 Hudbay Minerals Inc. — Penex (Cu, Zn)                        | 66 Canadian Premium Sand Inc. — Wanipagow (Silica)           |
| 32 Snow Lake Resources Ltd. — Thompson Brothers (Li)            | 67 1911 Gold Corp. — Rice Lake (Au)                          |
| 33 Hudbay Minerals Inc. — Chisel North (Cu, Zn)                 | 70 Grid Metals Corp. — Mayville (Ni, Cu, PGE)                |
| 34 Core Nickel Corp. — Resting (Ni, Cu)                         | 71 QMC Quantum Minerals Corp. — Irgon (Li, Cs, Ta)           |
| 35 Voyageur Mineral Explorers Corp. — Alberts Lake (Au, Cu, Zn) | 72 Grid Metals Corp. — Donner Lake (Li)                      |
| 36 1911 Gold Corp. — Apex (Au, Li)                              |  |
| 37 Foremost Lithium Resources Ltd. — Jean Lake (Li)             |  |
| 38 Wolfden Resources Corporation — Rice Island (Ni, Cu, Co)     |  |

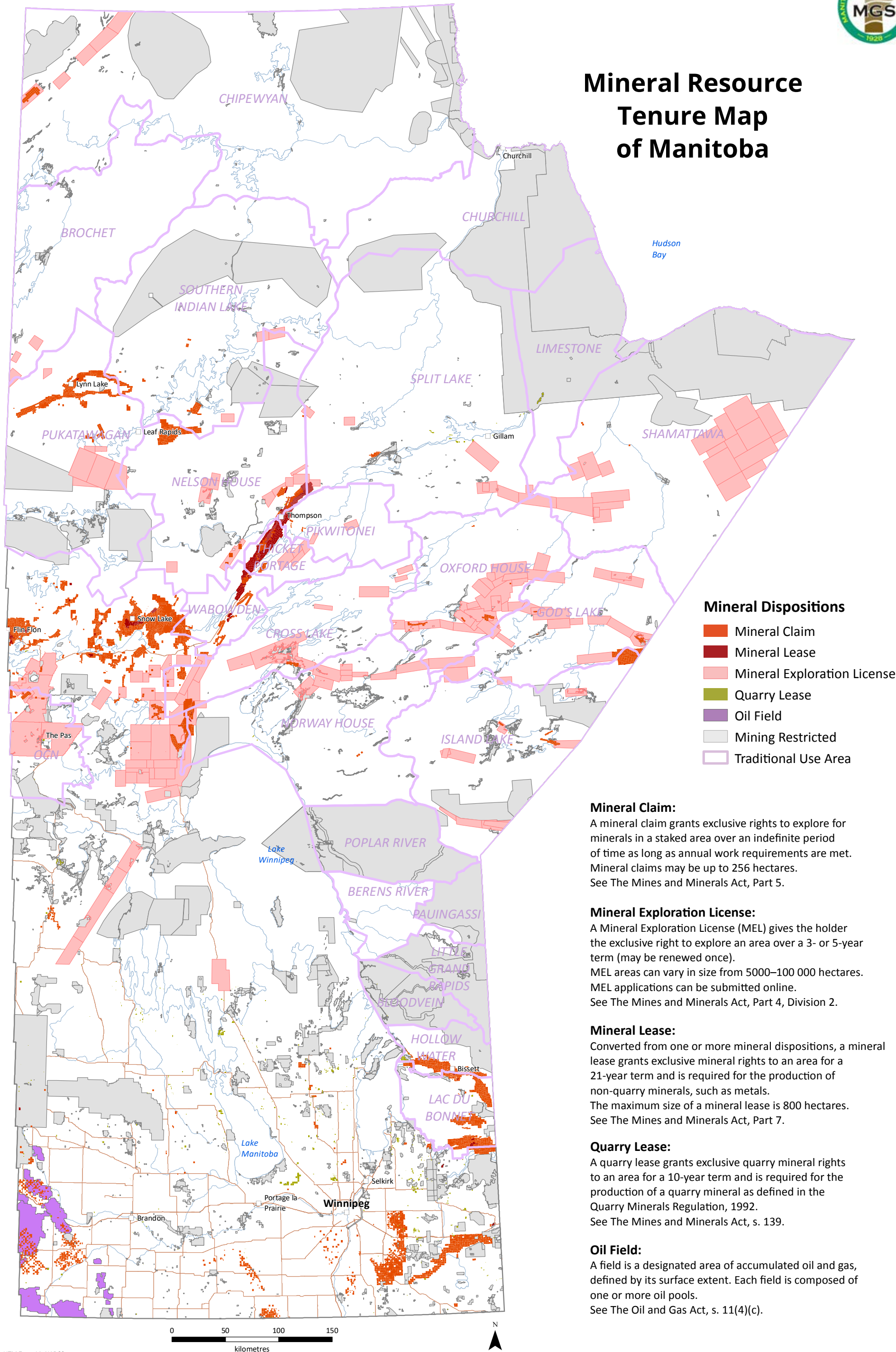


\*Includes projects with a modern publicly-reported mineral resource/reserve estimate or mineral exploration work permit within the last three years.





# Mineral Resource Tenure Map of Manitoba



- Mineral Dispositions**
- Mineral Claim
  - Mineral Lease
  - Mineral Exploration License
  - Quarry Lease
  - Oil Field
  - Mining Restricted
  - Traditional Use Area

**Mineral Claim:**  
 A mineral claim grants exclusive rights to explore for minerals in a staked area over an indefinite period of time as long as annual work requirements are met. Mineral claims may be up to 256 hectares. See The Mines and Minerals Act, Part 5.

**Mineral Exploration License:**  
 A Mineral Exploration License (MEL) gives the holder the exclusive right to explore an area over a 3- or 5-year term (may be renewed once). MEL areas can vary in size from 5000–100 000 hectares. MEL applications can be submitted online. See The Mines and Minerals Act, Part 4, Division 2.

**Mineral Lease:**  
 Converted from one or more mineral dispositions, a mineral lease grants exclusive mineral rights to an area for a 21-year term and is required for the production of non-quarry minerals, such as metals. The maximum size of a mineral lease is 800 hectares. See The Mines and Minerals Act, Part 7.

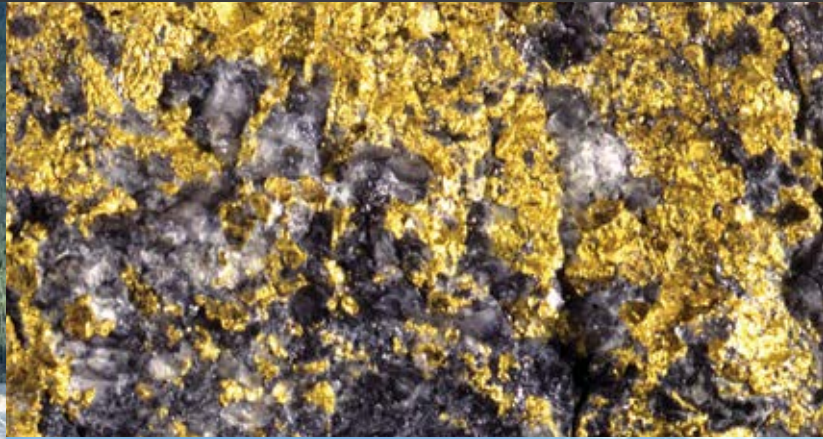
**Quarry Lease:**  
 A quarry lease grants exclusive quarry mineral rights to an area for a 10-year term and is required for the production of a quarry mineral as defined in the Quarry Minerals Regulation, 1992. See The Mines and Minerals Act, s. 139.

**Oil Field:**  
 A field is a designated area of accumulated oil and gas, defined by its surface extent. Each field is composed of one or more oil pools. See The Oil and Gas Act, s. 11(4)(c).

UTM Zone 14, NAD83







## Contact us

**Manitoba Economic Development,  
Investment, Trade and Natural Resources**

Minerals, Petroleum and Geoscience  
Phone: 204-945-1119  
Email: [minesinfo@gov.mb.ca](mailto:minesinfo@gov.mb.ca)



**Visit us online**  
[manitoba.ca/minerals](http://manitoba.ca/minerals)

## Photo captions

### Front cover, clockwise from upper right:

Vale's flooded Pipe open pit mine with the Pipe II headframe in the background, Thompson nickel belt, Manitoba.

Tantalum Mining Corporation of Canada Ltd.'s Tanco Mine at Bernic Lake, Manitoba.

Manitoba Geological Survey geologists examine a glaciofluvial deposit in southeastern Manitoba as part of the renewed MGS aggregate resource program.

Manitoba Geological Survey geologist mapping bedrock exposures at Keeyask hydroelectric dam, northeastern Manitoba.

### Back cover, clockwise from upper right:

Native gold and petzite, Rice Lake deposit, Bissett, Manitoba.

Rock outcrop in northern Manitoba.

Scooptram operating close to a spodumene zone pillar, Tanco Mine, Bernic Lake, Manitoba.

Hudbay Minerals' Lalor facility at Snow Lake, Manitoba.