

DALY UNIT NO. 8
WATERFLOOD EOR PROJECT
ANNUAL REPORT FOR 2015

March 11, 2016

Tundra Oil and Gas Partnership

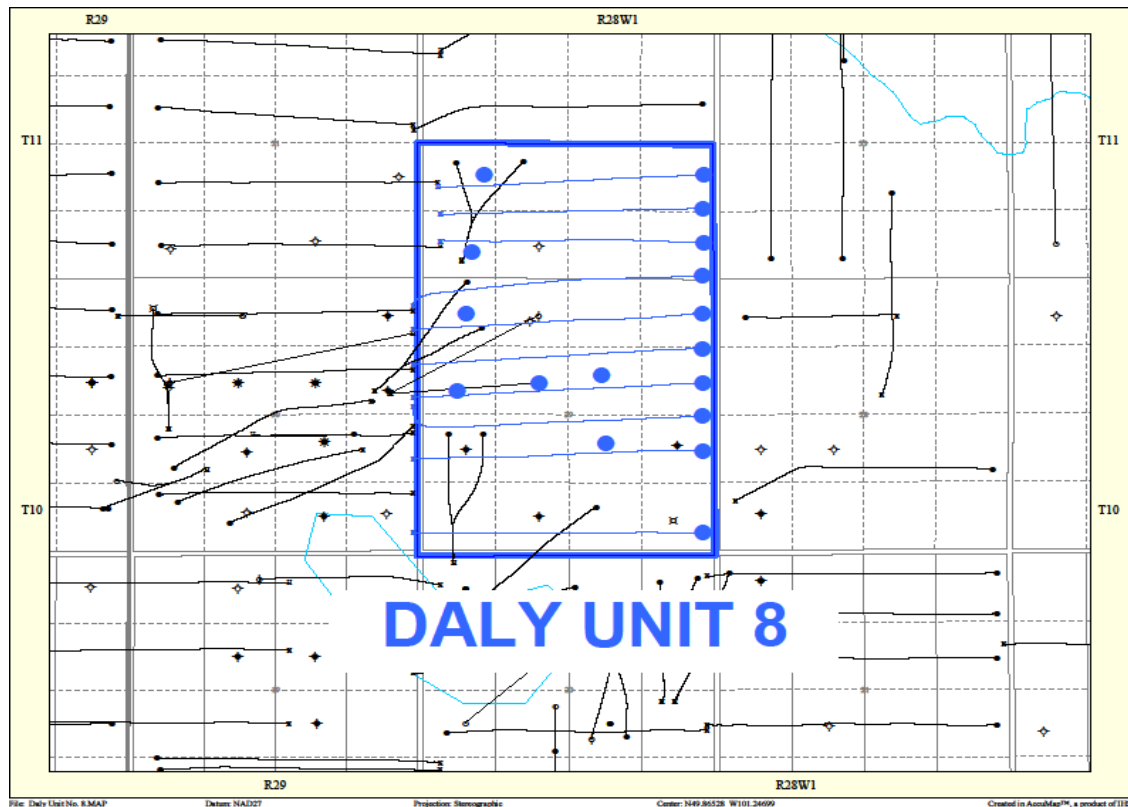
Table of Contents

INTRODUCTION.....	3
DISCUSSION.....	3
Production History	3
Waterflood History.....	5
Waterflood EOR Operating Strategy and Performance	6
Water Source and Quality	6
Injection Wellhead Pressures	6
Reservoir Pressure	6
Well Servicing	6
Waterflood Performance Discussion	6
List of Appendices.....	7
Appendix A: Injection Pattern Summary	
Appendix B: Average Monthly Injection Wellhead Pressures	
Appendix C: Reservoir Pressure Summary	
Appendix D: Injector Pattern Production/Injection Rates, Cumulative and VRR	
Plot and Table	

INTRODUCTION

Daly Unit No. 8 Enhanced Oil Recovery (EOR) Waterflood Project was approved under Waterflood Order No. 37, effective October 1st, 2014 with Tundra Oil and Gas as Operator. The EOR project area, outlined in blue in Figure 1, contains 3 abandoned vertical wells, 4 vertical and 7 horizontal producing wells and 3 injection wells in 24 LSDs in Township 10, Range 28W1.

Figure 1: Daly Unit No. 8 Area Outline



In accordance with Section 73 of the Manitoba Drilling and Production Regulation, Tundra submits the following 2015 Annual Progress Report for Daly Unit No. 8 as required by Waterflood Order No. 37.

DISCUSSION

Production History

For the wells included in Daly Unit No. 8, production started in February 1986 with the 00/07-29 and 00/10-29-010-28W1/00 wells. Oil production peaked at 60.0 m³/d in October of 2011. In 2015, the average production for the unit was 11.2 m³/d of oil and 78.0 m³/d of water, and the average WOR was 7.12 m³/m³. Water injection commenced in Daly Unit No. 8 in February 2015. The rates and WOR are presented in Figure 2.

Figure 2: Daly Unit No. 8 Production/Injection Rates and WOR vs. Time

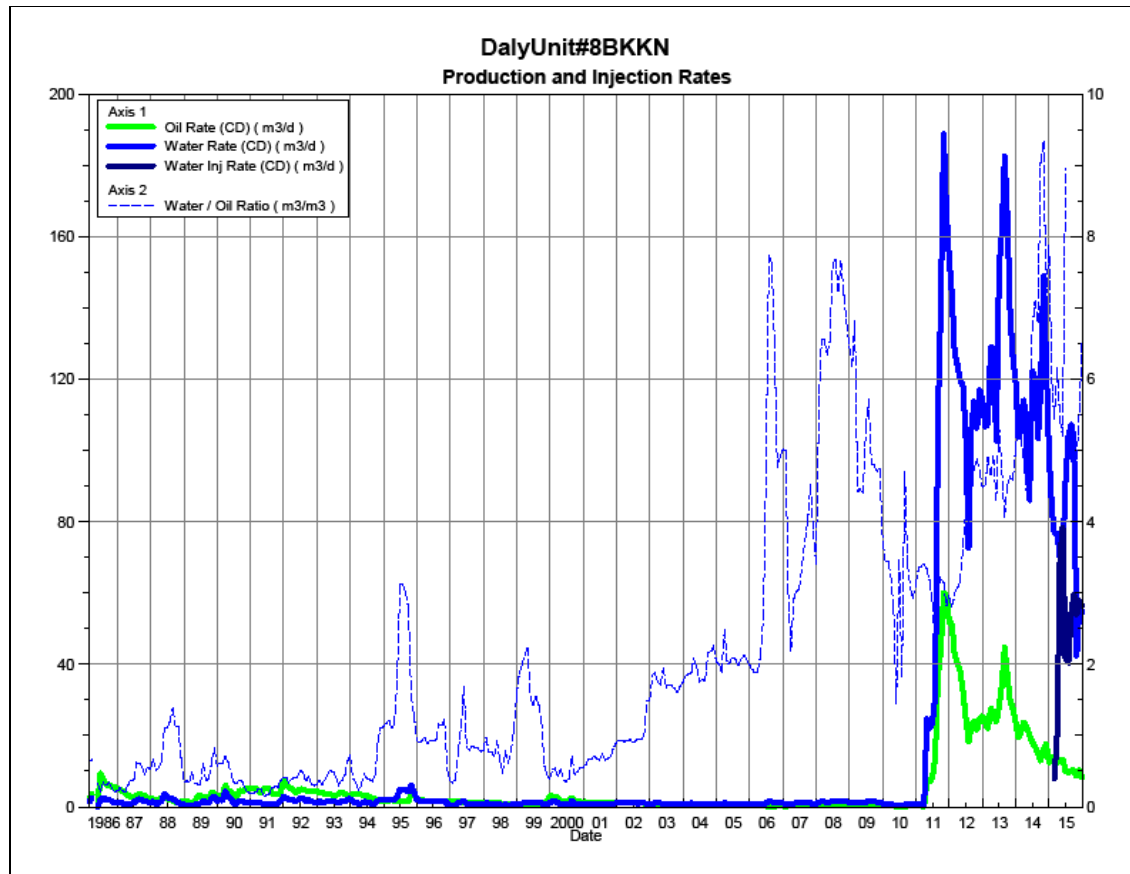
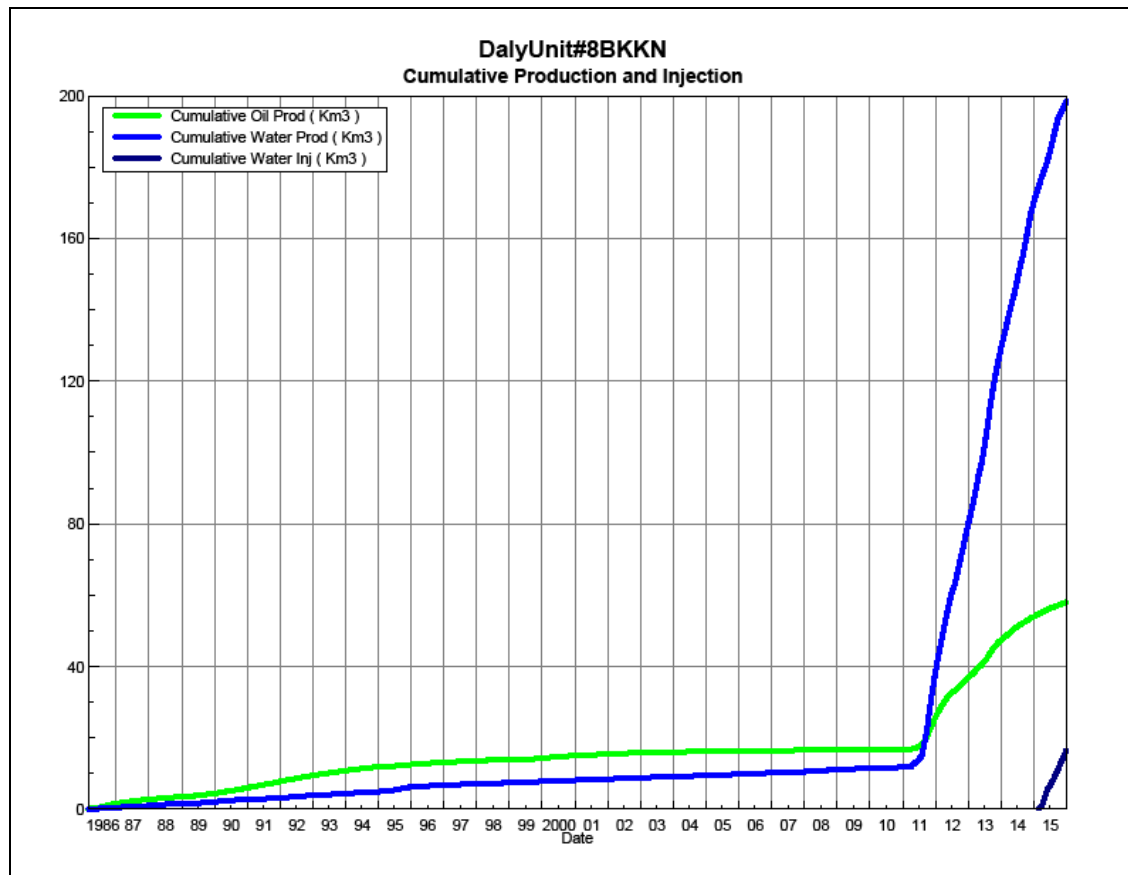


Figure 3 shows the cumulative production for Daly Unit No. 8 to the end of December 2015 as 58.0 e³m³ of oil and 198.6 e³m³ of water, representing an 8.3% recovery factor of the OOIP.

Figure 3: Daly Unit No. 8 Cumulative Oil, Water and Water Injected vs. Time



Waterflood History

The five (5) horizontal injection wells proposed for Daly Unit No. 8 were drilled in 2011 and put on production that same year. All of the horizontal wells were fracture stimulated to improve the injection rates. In order to maximize recovery from this Unit, Tundra expects to produce all of the injectors for a short period of time to clean-up the reservoir near the wellbores prior to being converted into water injectors.

In 2015, the 00/09-29, 00/16-29 and 00/01-32-010-28W1 producers were converted to injectors. Injection commenced in Daly Unit No. 8 in February 2015. Tundra is planning to convert the 00/08-32 producer to an injector in Q2 2017 and the 02/08-29 producer to an injector in Q2 2018.

Production performance by injector pattern are summarized in Appendix A.

Any future revisions to the waterflood development or surveillance plan would be based on new production or performance response data, technical studies, or observed reservoir behavior and reserves recovery interpretations.

Waterflood EOR Operating Strategy and Performance

Water Source and Quality

Injection water for Daly Unit No. 8 will be supplied from the Jurassic source water well at 100/02-25-010-29W1 (00/02-25). Tundra received approval from the Petroleum Branch in March 2013 to use the 00/02-25 well as a source water well for waterflood operations. Jurassic-sourced water will be pumped from the 00/02-25 source well to the Daly 12-24-10-29 battery, where it will be filtered and then pumped up to injection system pressure.

Injection Wellhead Pressures

The average monthly wellhead injection pressures are summarized in Appendix B. The average injection pressure for Daly Unit No. 8 was 1854 kPag in 2015.

Reservoir Pressure

Where practical, Tundra is committed to collecting pressure data from newly drilled wells. For Daly Unit No. 8, pressure data taken in 2013 from 4 locations is available. A summary table is presented in Appendix C. Pressures are corrected to a common datum of -450 m SS for comparison with other units in the area.

Well Servicing

Table 1 lists the maintenance that was required in Daly Unit No. 8 in 2015.

Table 1: Service and Maintenance in Daly Unit No. 8

00/01-32-010-28W1/0	WIW Conversion	1/23/2015
00/09-29-010-28W1/0	WIW Conversion	7/2/2015

Waterflood Performance Discussion

Water injection began in Q1 2015, after the conversion of the 00/16-29 and 00/01-32 producers to injectors. At the end of 2015, Daly Unit No. 8 had 3 injection patterns in place. Since water injection only started in February 2015, there is no waterflood analysis that can be done at this time.

A summary table of the injection pattern(s) is presented in Appendix A. Plots of the production and injection data along with the VRR information are presented in Appendix D for each of the injection pattern(s).

List of Appendices

Appendix A: Injection Pattern Summary

Appendix B: Average Monthly Injection Wellhead Pressures

Appendix C: Reservoir Pressure Summary

Appendix D: Injector Pattern Production/Injection Rates, Cumulative and VRR Plot
and Table for the following injectors:

02/08-29-010-28W1/0

00/09-29-010-28W1/0

00/16-29-010-28W1/0

00/01-32-010-28W1/0

00/08-32-010-28W1/0

Appendix A

Daly Unit No. 8 Pattern Summary as of December 2015

Pattern Name	Injector Location (010-28W1)	Status	No. of Supported Wells	Supported Wells (010-28W1)	Allocation Factor	Pattern Prod Start Month	Inj Start Month	Oil Rate (m³/d)	Water Rate (m³/d)	WOR (m³/m³)	Water Injection (m³/d)	Cum Oil (E³m³)	Cum Water (E³m³)	Cum Inj Water (E³m³)	Monthly VRR	Cum VRR
02/08-29-010-28 Injector	02/08-30	Capable of Oil Production	3	00/07-29 02/01-29, 03/08-29	1 0.5	Jul 2011	-	1.1	7.46	6.78	-	9.4	66.9	0.0	0.0	0.00
00/09-29-010-28 Injector	00/09-30	Capable of Oil Production	6	00/10-29, 00/11-29, 00/12-29, 00/13-29 03/08-29, 02/16-29	1 0.5	Jul 2011	Aug 2015	1.08	16.38	15.23	18.81	18.08	49.64	2.7	1.1	0.04
00/16-29-010-28 Injector	00/16-30	Capable of Oil Production	2	02/16-29, 02/01-32	0.5	Jul 2011	Feb 2015	1.92	16.21	8.43	19.71	9.52	29.43	7.2	1.1	0.18
00/01-32-010-28 Injector	00/04-32	Capable of Oil Production	3	00/04-32 02/01-32, 02/08-32	1 0.5	Apr 2011	Mar 2015	2.13	9.42	4.43	17.7	11.1	30.8	6.6	1.5	0.15
00/08-32-010-28 Injector	00/05-32	Capable of Oil Production	2	00/05-32 02/08-32	1 0.5	Mar 2011	-	1.17	4.35	3.71	-	8.22	16.06	0.0	0.0	0.00

Appendix B

Average Monthly Injection Pressure (kPag)

	Injection Pressure		
Month	100/09-29	100/16-29	100/01-32
Feb-15	0	7	0
Mar-15	0	-59	-65
Apr-15	0	517	-92
May-15	0	1736	119
Jun-15	0	1413	-73
Jul-15	0	1819	171
Aug-15	-78	2405	672
Sep-15	-89	2407	1044
Oct-15	127	2944	1660
Nov-15	1340	3687	2585
Dec-15	1881	3882	3087

APPENDIX C

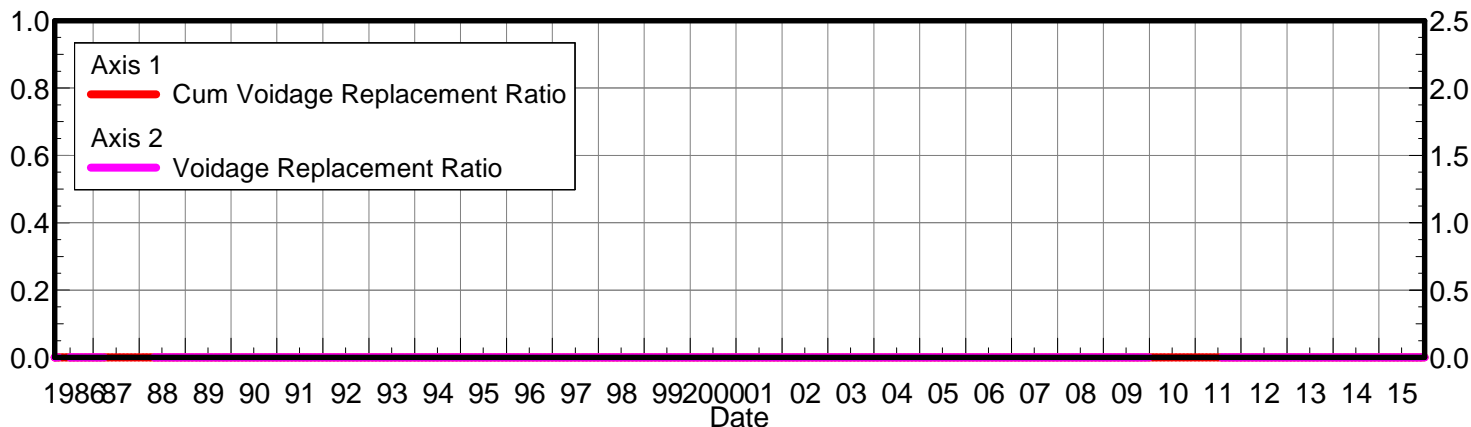
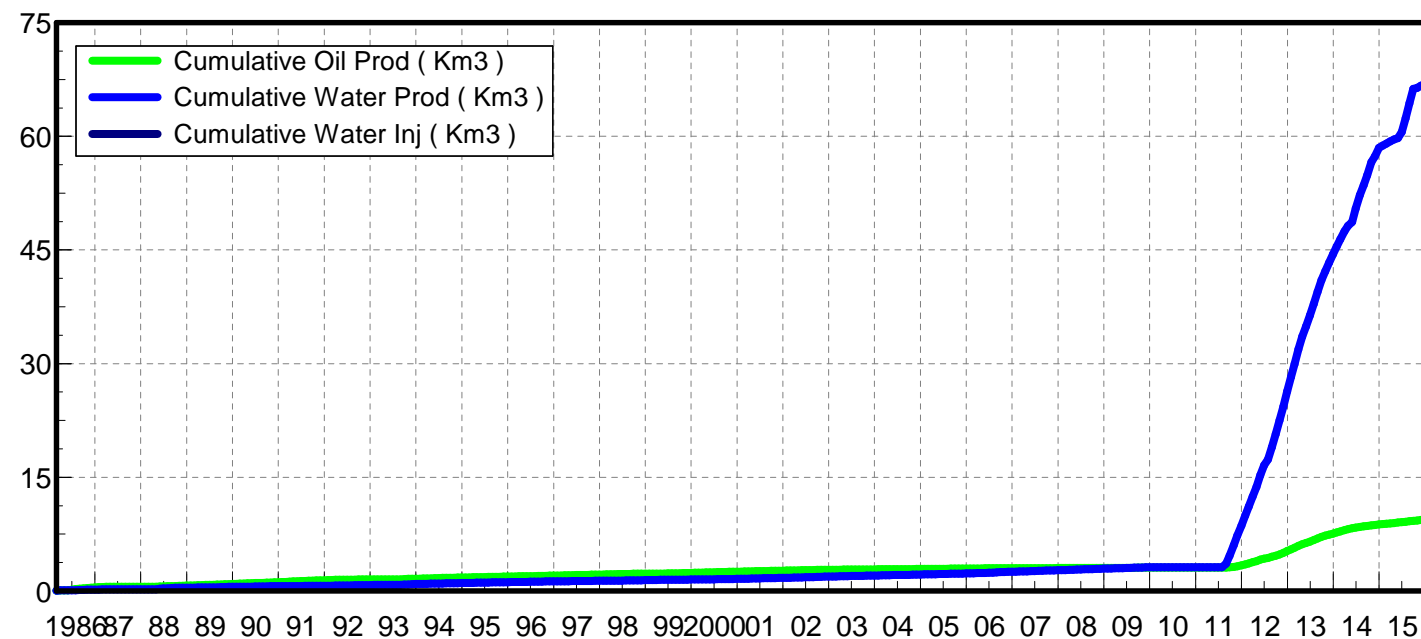
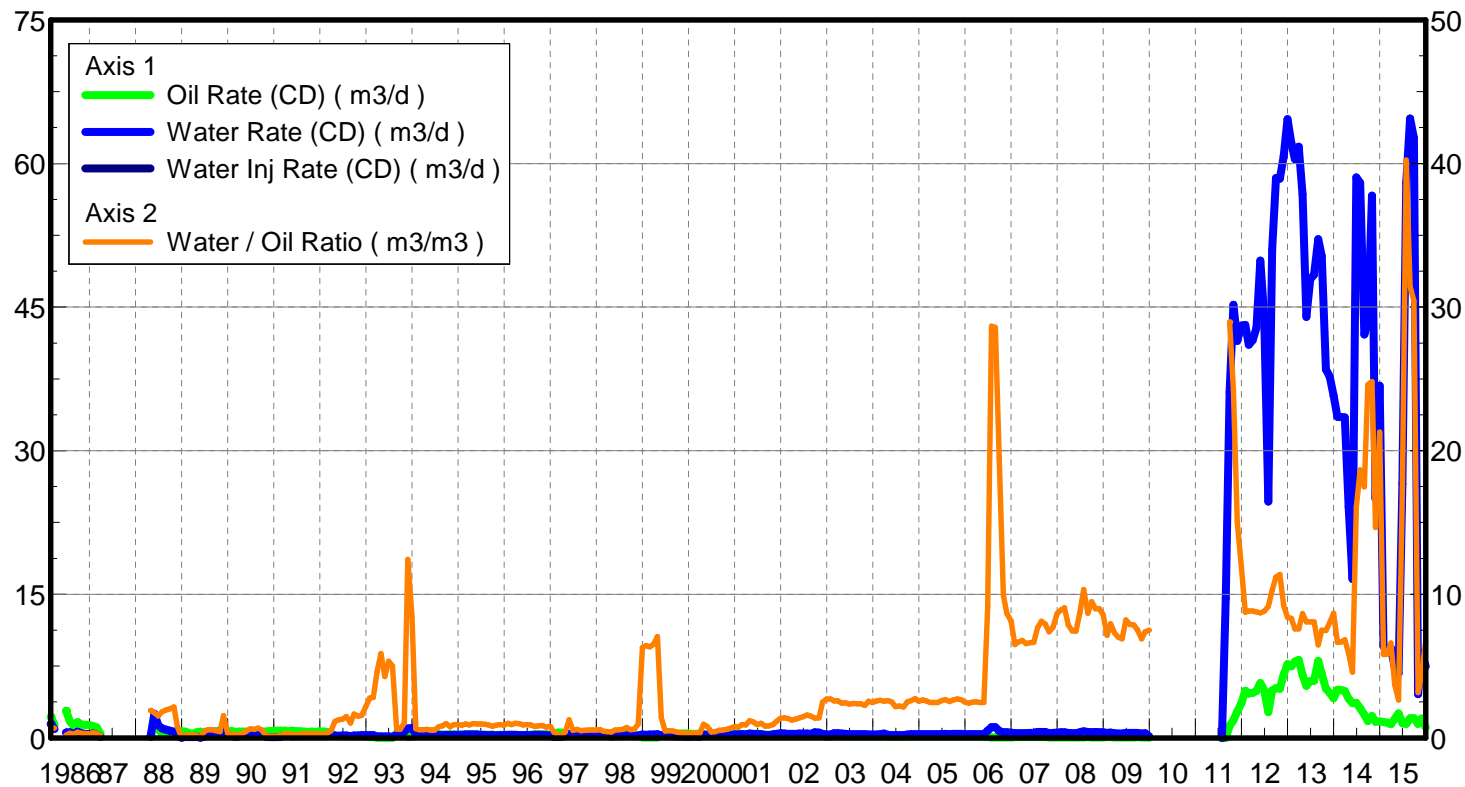
Daly Unit No. 8 - Pressure Summary

Location	Test Date	Final Pressure (kPaa)	MPP (mTVD)	KB	Datum Depth	Gradient	Pressure @ -450 masl
103/08-29-010-28W1/00	Feb 2nd - 22nd, 2013	5526.5	819.6	519.9	-450	8.25	6767
102/16-29-010-28W1/00	Jan 28th - Feb 11th, 2013	4229.8	818.2	519.3	-450	8.25	5476
102/01-32-010-28W1/00	Feb 9th - 23rd, 2013	5702.6	825.9	520.1	-450	8.25	6892
102/08-32-010-28W1/00	Jan 18th - 29th, 2013	3905.8	825.1	520.7	-450	8.25	5107

Appendix D

Rates and VRR Plots

Oil Formation Vol Factor : 1.00150 m3/m3
 Water Formation Vol Factor : 1.00150 m3/m3
 Water / Oil Ratio : 6.78 m3/m3
 Pattern : 02/08-29-010-28Inj Set: DalyUnit#8BKKN
 March 10, 2016
 Operator: Tundra_O&G_Prtshp
 Oil Rate (CD) : 1.10 m3/d
 Water Rate (CD) : 7.46 m3/d
 Water Inj Rate (CD) : * m3/d



Date	Oil Rate (CD) m3/d	Water Rate (CD) m3/d	Water Oil Ratio m3/m3	Water Inj Rate (CD) m3/d	Cum Oil Prod Km3	Cum Water Prod Km3	Cum Water Inj Km3	VRR	Cum VRR
2/28/1986	2.21	1.47	0.67		0.06	0.04	0.00	0.000	0.000
3/31/1986	1.36	0.92	0.67		0.10	0.07	0.00	0.000	0.000
6/30/1986	2.82	0.54	0.19		0.19	0.09	0.00	0.000	0.000
7/31/1986	1.72	0.58	0.34		0.24	0.10	0.00	0.000	0.000
8/31/1986	1.27	0.34	0.27		0.28	0.11	0.00	0.000	0.000
9/30/1986	1.64	0.65	0.39		0.33	0.13	0.00	0.000	0.000
10/31/1986	1.40	0.47	0.34		0.37	0.15	0.00	0.000	0.000
11/30/1986	1.37	0.42	0.31		0.41	0.16	0.00	0.000	0.000
12/31/1986	1.35	0.39	0.29		0.46	0.17	0.00	0.000	0.000
1/31/1987	1.22	0.44	0.36		0.49	0.19	0.00	0.000	0.000
2/28/1987	1.10	0.33	0.30		0.53	0.20	0.00	0.000	0.000
3/31/1987	0.42	0.07	0.18		0.54	0.20	0.00	0.000	0.000
4/30/1988	0.08	0.15	1.92		0.54	0.20	0.00	0.000	0.000
5/31/1988	1.45	2.54	1.75		0.59	0.28	0.00	0.000	0.000
6/30/1988	0.86	1.32	1.53		0.61	0.32	0.00	0.000	0.000
7/31/1988	0.55	1.00	1.82		0.63	0.35	0.00	0.000	0.000
8/31/1988	0.44	0.86	1.96		0.64	0.38	0.00	0.000	0.000
9/30/1988	0.37	0.75	2.02		0.65	0.40	0.00	0.000	0.000
10/31/1988	0.30	0.65	2.15		0.66	0.42	0.00	0.000	0.000
11/30/1988	0.51	0.39	0.77		0.68	0.43	0.00	0.000	0.000
12/31/1988	0.69	0.02	0.03		0.70	0.43	0.00	0.000	0.000
1/31/1989	0.66	0.14	0.20		0.72	0.44	0.00	0.000	0.000
2/28/1989	0.47	0.08	0.17		0.73	0.44	0.00	0.000	0.000
3/31/1989	0.43	0.09	0.22		0.75	0.44	0.00	0.000	0.000
4/30/1989	0.58	0.10	0.18		0.76	0.45	0.00	0.000	0.000
5/31/1989	0.65	0.03	0.04		0.78	0.45	0.00	0.000	0.000
6/30/1989	0.35	0.16	0.46		0.79	0.45	0.00	0.000	0.000
7/31/1989	0.65	0.37	0.57		0.81	0.46	0.00	0.000	0.000
8/31/1989	0.64	0.37	0.58		0.83	0.47	0.00	0.000	0.000
9/30/1989	0.70	0.36	0.51		0.86	0.49	0.00	0.000	0.000
10/31/1989	0.79	0.35	0.44		0.88	0.50	0.00	0.000	0.000
11/30/1989	0.73	1.13	1.55		0.90	0.53	0.00	0.000	0.000
12/31/1989	0.64	0.21	0.32		0.92	0.54	0.00	0.000	0.000
1/31/1990	0.71	0.19	0.26		0.94	0.54	0.00	0.000	0.000
2/28/1990	0.63	0.13	0.21		0.96	0.55	0.00	0.000	0.000
3/31/1990	0.66	0.16	0.25		0.98	0.55	0.00	0.000	0.000
4/30/1990	0.64	0.21	0.32		1.00	0.56	0.00	0.000	0.000
5/31/1990	0.65	0.31	0.47		1.02	0.57	0.00	0.000	0.000
6/30/1990	0.57	0.37	0.64		1.04	0.58	0.00	0.000	0.000
7/31/1990	0.55	0.33	0.59		1.06	0.59	0.00	0.000	0.000
8/31/1990	0.58	0.39	0.68		1.07	0.60	0.00	0.000	0.000
9/30/1990	0.66	0.36	0.54		1.09	0.61	0.00	0.000	0.000
10/31/1990	0.65	0.11	0.16		1.11	0.61	0.00	0.000	0.000
11/30/1990	0.72	0.10	0.13		1.14	0.62	0.00	0.000	0.000
12/31/1990	0.72	0.09	0.13		1.16	0.62	0.00	0.000	0.000
1/31/1991	0.74	0.09	0.13		1.18	0.62	0.00	0.000	0.000

Date	Oil Rate (CD) m3/d	Water Rate (CD) m3/d	Water Oil Ratio m3/m3	Water Inj Rate (CD) m3/d	Cum Oil Prod Km3	Cum Water Prod Km3	Cum Water Inj Km3	VRR	Cum VRR
2/28/1991	0.76	0.12	0.16		1.20	0.63	0.00	0.000	0.000
3/31/1991	0.76	0.23	0.30		1.23	0.63	0.00	0.000	0.000
4/30/1991	0.72	0.21	0.30		1.25	0.64	0.00	0.000	0.000
5/31/1991	0.76	0.16	0.21		1.27	0.64	0.00	0.000	0.000
6/30/1991	0.70	0.17	0.24		1.29	0.65	0.00	0.000	0.000
7/31/1991	0.70	0.18	0.26		1.31	0.66	0.00	0.000	0.000
8/31/1991	0.64	0.19	0.30		1.33	0.66	0.00	0.000	0.000
9/30/1991	0.64	0.19	0.30		1.35	0.67	0.00	0.000	0.000
10/31/1991	0.64	0.18	0.29		1.37	0.67	0.00	0.000	0.000
11/30/1991	0.64	0.19	0.29		1.39	0.68	0.00	0.000	0.000
12/31/1991	0.67	0.19	0.28		1.41	0.68	0.00	0.000	0.000
1/31/1992	0.65	0.18	0.28		1.43	0.69	0.00	0.000	0.000
2/29/1992	0.62	0.21	0.33		1.45	0.70	0.00	0.000	0.000
3/31/1992	0.49	0.24	0.49		1.47	0.70	0.00	0.000	0.000
4/30/1992	0.21	0.24	1.16		1.47	0.71	0.00	0.000	0.000
5/31/1992	0.18	0.23	1.27		1.48	0.72	0.00	0.000	0.000
6/30/1992	0.20	0.26	1.30		1.48	0.73	0.00	0.000	0.000
7/31/1992	0.18	0.26	1.47		1.49	0.73	0.00	0.000	0.000
8/31/1992	0.17	0.18	1.04		1.49	0.74	0.00	0.000	0.000
9/30/1992	0.16	0.27	1.65		1.50	0.75	0.00	0.000	0.000
10/31/1992	0.18	0.27	1.51		1.51	0.76	0.00	0.000	0.000
11/30/1992	0.18	0.28	1.57		1.51	0.76	0.00	0.000	0.000
12/31/1992	0.13	0.28	2.20		1.51	0.77	0.00	0.000	0.000
1/31/1993	0.10	0.28	2.77		1.52	0.78	0.00	0.000	0.000
2/28/1993	0.10	0.28	2.82		1.52	0.79	0.00	0.000	0.000
3/31/1993	0.04	0.16	4.64		1.52	0.79	0.00	0.000	0.000
4/30/1993	0.03	0.16	5.88		1.52	0.80	0.00	0.000	0.000
5/31/1993	0.04	0.15	4.27		1.52	0.80	0.00	0.000	0.000
6/30/1993	0.03	0.16	5.33		1.52	0.81	0.00	0.000	0.000
7/31/1993	0.02	0.11	5.00		1.53	0.81	0.00	0.000	0.000
8/31/1993	0.46	0.28	0.62		1.54	0.82	0.00	0.000	0.000
9/30/1993	0.90	0.53	0.58		1.57	0.84	0.00	0.000	0.000
10/31/1993	0.63	0.65	1.04		1.59	0.86	0.00	0.000	0.000
11/30/1993	0.08	0.99	12.42		1.59	0.89	0.00	0.000	0.000
12/31/1993	0.12	1.03	8.42		1.59	0.92	0.00	0.000	0.000
1/31/1994	0.60	0.38	0.64		1.61	0.93	0.00	0.000	0.000
2/28/1994	0.57	0.32	0.56		1.63	0.94	0.00	0.000	0.000
3/31/1994	0.55	0.32	0.57		1.64	0.95	0.00	0.000	0.000
4/30/1994	0.57	0.34	0.60		1.66	0.96	0.00	0.000	0.000
5/31/1994	0.67	0.36	0.53		1.68	0.97	0.00	0.000	0.000
6/30/1994	0.72	0.39	0.55		1.70	0.98	0.00	0.000	0.000
7/31/1994	0.39	0.30	0.76		1.72	0.99	0.00	0.000	0.000
8/31/1994	0.36	0.30	0.85		1.73	1.00	0.00	0.000	0.000
9/30/1994	0.33	0.33	1.00		1.74	1.01	0.00	0.000	0.000
10/31/1994	0.37	0.29	0.77		1.75	1.02	0.00	0.000	0.000
11/30/1994	0.35	0.33	0.92		1.76	1.03	0.00	0.000	0.000

Date	Oil Rate (CD) m3/d	Water Rate (CD) m3/d	Water Oil Ratio m3/m3	Water Inj Rate (CD) m3/d	Cum Oil Prod Km3	Cum Water Prod Km3	Cum Water Inj Km3	VRR	Cum VRR
12/31/1994	0.36	0.34	0.94		1.77	1.04	0.00	0.000	0.000
1/31/1995	0.35	0.31	0.87		1.78	1.05	0.00	0.000	0.000
2/28/1995	0.36	0.35	0.98		1.79	1.06	0.00	0.000	0.000
3/31/1995	0.37	0.34	0.91		1.80	1.07	0.00	0.000	0.000
4/30/1995	0.35	0.34	0.99		1.81	1.08	0.00	0.000	0.000
5/31/1995	0.35	0.34	0.96		1.82	1.09	0.00	0.000	0.000
6/30/1995	0.33	0.32	0.97		1.83	1.10	0.00	0.000	0.000
7/31/1995	0.33	0.31	0.94		1.84	1.11	0.00	0.000	0.000
8/31/1995	0.34	0.30	0.90		1.85	1.12	0.00	0.000	0.000
9/30/1995	0.36	0.29	0.81		1.87	1.13	0.00	0.000	0.000
10/31/1995	0.27	0.24	0.88		1.87	1.14	0.00	0.000	0.000
11/30/1995	0.32	0.30	0.93		1.88	1.15	0.00	0.000	0.000
12/31/1995	0.33	0.29	0.89		1.89	1.15	0.00	0.000	0.000
1/31/1996	0.31	0.32	1.02		1.90	1.16	0.00	0.000	0.000
2/29/1996	0.33	0.31	0.94		1.91	1.17	0.00	0.000	0.000
3/31/1996	0.32	0.32	1.01		1.92	1.18	0.00	0.000	0.000
4/30/1996	0.30	0.30	1.00		1.93	1.19	0.00	0.000	0.000
5/31/1996	0.30	0.27	0.91		1.94	1.20	0.00	0.000	0.000
6/30/1996	0.32	0.29	0.92		1.95	1.21	0.00	0.000	0.000
7/31/1996	0.33	0.30	0.91		1.96	1.22	0.00	0.000	0.000
8/31/1996	0.38	0.31	0.80		1.97	1.23	0.00	0.000	0.000
9/30/1996	0.37	0.31	0.84		1.98	1.24	0.00	0.000	0.000
10/31/1996	0.37	0.32	0.86		2.00	1.25	0.00	0.000	0.000
11/30/1996	0.38	0.29	0.76		2.01	1.26	0.00	0.000	0.000
12/31/1996	0.31	0.26	0.82		2.02	1.26	0.00	0.000	0.000
1/31/1997	0.22	0.09	0.39		2.02	1.27	0.00	0.000	0.000
2/28/1997	0.56	0.12	0.21		2.04	1.27	0.00	0.000	0.000
3/31/1997	0.57	0.11	0.19		2.06	1.27	0.00	0.000	0.000
4/30/1997	0.49	0.21	0.42		2.07	1.28	0.00	0.000	0.000
5/31/1997	0.33	0.41	1.26		2.08	1.29	0.00	0.000	0.000
6/30/1997	0.40	0.21	0.52		2.09	1.30	0.00	0.000	0.000
7/31/1997	0.38	0.22	0.58		2.11	1.31	0.00	0.000	0.000
8/31/1997	0.38	0.20	0.51		2.12	1.31	0.00	0.000	0.000
9/30/1997	0.39	0.21	0.53		2.13	1.32	0.00	0.000	0.000
10/31/1997	0.37	0.21	0.56		2.14	1.32	0.00	0.000	0.000
11/30/1997	0.38	0.21	0.55		2.15	1.33	0.00	0.000	0.000
12/31/1997	0.38	0.21	0.56		2.16	1.34	0.00	0.000	0.000
1/31/1998	0.36	0.21	0.58		2.17	1.34	0.00	0.000	0.000
2/28/1998	0.45	0.20	0.46		2.19	1.35	0.00	0.000	0.000
3/31/1998	0.39	0.17	0.45		2.20	1.35	0.00	0.000	0.000
4/30/1998	0.37	0.16	0.42		2.21	1.36	0.00	0.000	0.000
5/31/1998	0.35	0.19	0.55		2.22	1.36	0.00	0.000	0.000
6/30/1998	0.35	0.20	0.56		2.23	1.37	0.00	0.000	0.000
7/31/1998	0.33	0.20	0.60		2.24	1.38	0.00	0.000	0.000
8/31/1998	0.35	0.25	0.73		2.25	1.38	0.00	0.000	0.000
9/30/1998	0.33	0.19	0.58		2.26	1.39	0.00	0.000	0.000

Date	Oil Rate (CD) m3/d	Water Rate (CD) m3/d	Water Oil Ratio m3/m3	Water Inj Rate (CD) m3/d	Cum Oil Prod Km3	Cum Water Prod Km3	Cum Water Inj Km3	VRR	Cum VRR
10/31/1998	0.33	0.20	0.61		2.27	1.40	0.00	0.000	0.000
11/30/1998	0.26	0.26	0.97		2.28	1.40	0.00	0.000	0.000
12/31/1998	0.05	0.35	6.29		2.28	1.42	0.00	0.000	0.000
1/31/1999	0.05	0.33	6.44		2.28	1.43	0.00	0.000	0.000
2/28/1999	0.05	0.34	6.33		2.29	1.44	0.00	0.000	0.000
3/31/1999	0.05	0.36	6.53		2.29	1.45	0.00	0.000	0.000
4/30/1999	0.05	0.38	7.06		2.29	1.46	0.00	0.000	0.000
5/31/1999	0.20	0.28	1.41		2.29	1.47	0.00	0.000	0.000
6/30/1999	0.38	0.18	0.47		2.31	1.47	0.00	0.000	0.000
7/31/1999	0.39	0.20	0.51		2.32	1.48	0.00	0.000	0.000
8/31/1999	0.40	0.19	0.48		2.33	1.48	0.00	0.000	0.000
9/30/1999	0.39	0.16	0.41		2.34	1.49	0.00	0.000	0.000
10/31/1999	0.44	0.15	0.35		2.36	1.49	0.00	0.000	0.000
11/30/1999	0.47	0.16	0.34		2.37	1.50	0.00	0.000	0.000
12/31/1999	0.46	0.13	0.28		2.38	1.50	0.00	0.000	0.000
1/31/2000	0.42	0.15	0.34		2.40	1.51	0.00	0.000	0.000
2/29/2000	0.42	0.15	0.36		2.41	1.51	0.00	0.000	0.000
3/31/2000	0.45	0.14	0.30		2.42	1.51	0.00	0.000	0.000
4/30/2000	0.36	0.34	0.94		2.43	1.52	0.00	0.000	0.000
5/31/2000	0.38	0.30	0.79		2.45	1.53	0.00	0.000	0.000
6/30/2000	0.48	0.20	0.42		2.46	1.54	0.00	0.000	0.000
7/31/2000	0.46	0.20	0.43		2.47	1.55	0.00	0.000	0.000
8/31/2000	0.43	0.22	0.52		2.49	1.55	0.00	0.000	0.000
9/30/2000	0.47	0.26	0.55		2.50	1.56	0.00	0.000	0.000
10/31/2000	0.36	0.22	0.60		2.51	1.57	0.00	0.000	0.000
11/30/2000	0.41	0.28	0.69		2.53	1.58	0.00	0.000	0.000
12/31/2000	0.45	0.36	0.79		2.54	1.59	0.00	0.000	0.000
1/31/2001	0.45	0.35	0.76		2.55	1.60	0.00	0.000	0.000
2/28/2001	0.40	0.38	0.94		2.56	1.61	0.00	0.000	0.000
3/31/2001	0.40	0.36	0.91		2.58	1.62	0.00	0.000	0.000
4/30/2001	0.38	0.46	1.19		2.59	1.63	0.00	0.000	0.000
5/31/2001	0.39	0.43	1.10		2.60	1.65	0.00	0.000	0.000
6/30/2001	0.44	0.40	0.92		2.61	1.66	0.00	0.000	0.000
7/31/2001	0.40	0.40	1.02		2.63	1.67	0.00	0.000	0.000
8/31/2001	0.35	0.28	0.81		2.64	1.68	0.00	0.000	0.000
9/30/2001	0.33	0.28	0.83		2.65	1.69	0.00	0.000	0.000
10/31/2001	0.37	0.34	0.92		2.66	1.70	0.00	0.000	0.000
11/30/2001	0.35	0.41	1.15		2.67	1.71	0.00	0.000	0.000
12/31/2001	0.35	0.48	1.38		2.68	1.73	0.00	0.000	0.000
1/31/2002	0.32	0.44	1.39		2.69	1.74	0.00	0.000	0.000
2/28/2002	0.30	0.41	1.34		2.70	1.75	0.00	0.000	0.000
3/31/2002	0.34	0.41	1.23		2.71	1.76	0.00	0.000	0.000
4/30/2002	0.32	0.42	1.31		2.72	1.78	0.00	0.000	0.000
5/31/2002	0.32	0.45	1.39		2.73	1.79	0.00	0.000	0.000
6/30/2002	0.31	0.46	1.48		2.74	1.80	0.00	0.000	0.000
7/31/2002	0.29	0.47	1.59		2.75	1.82	0.00	0.000	0.000

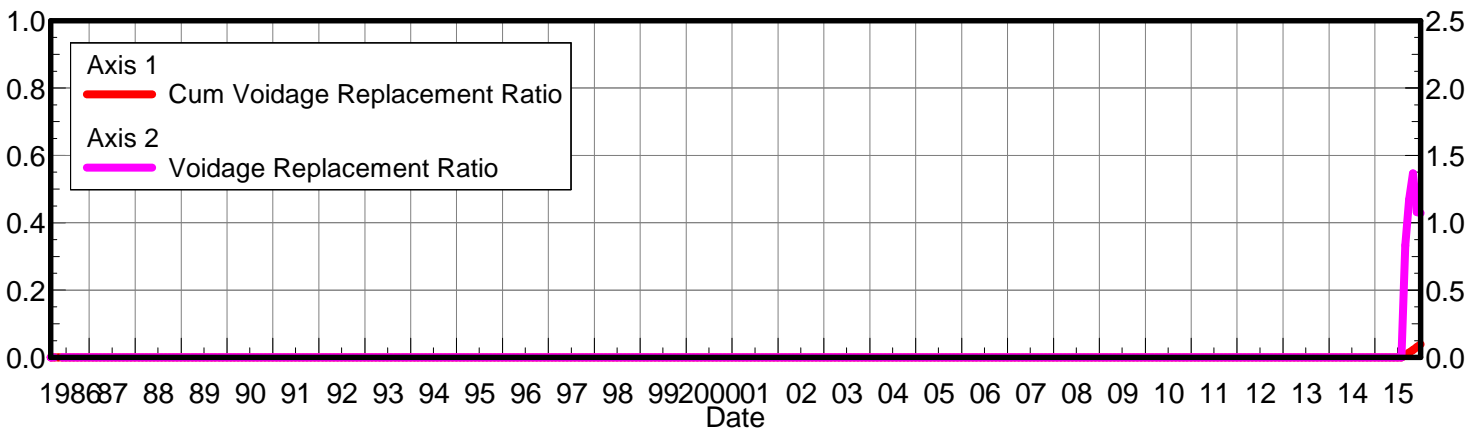
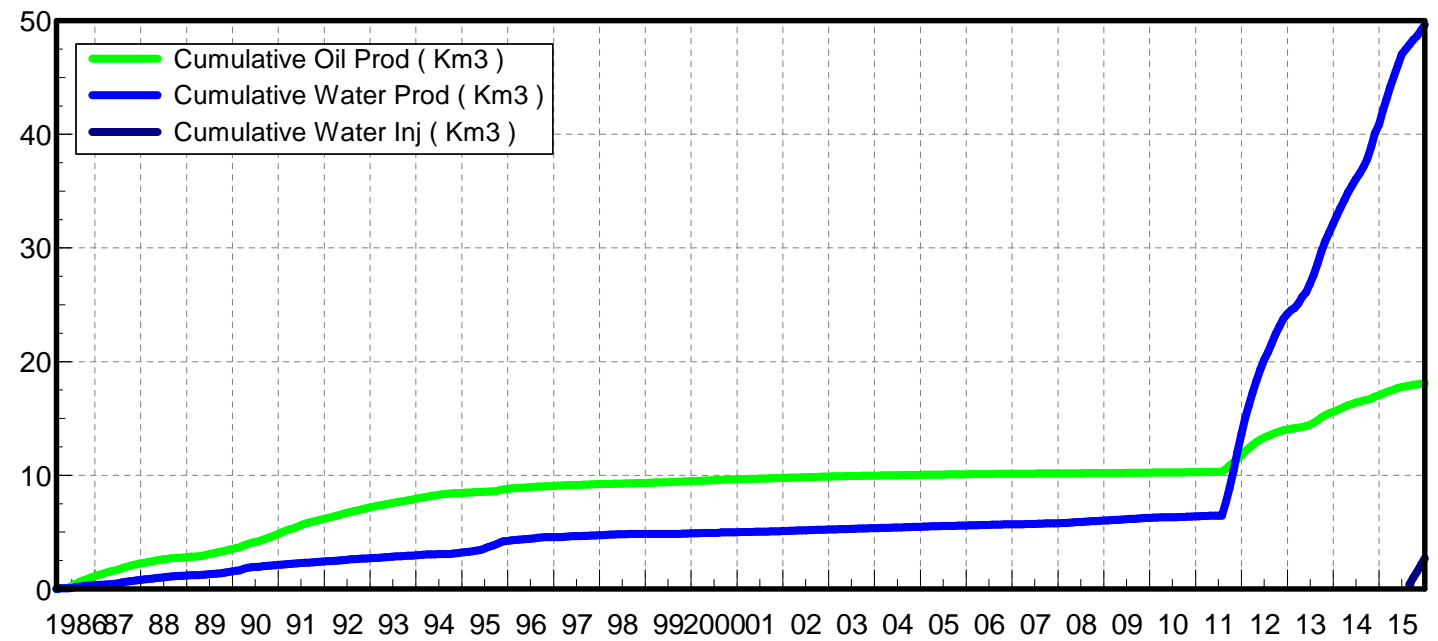
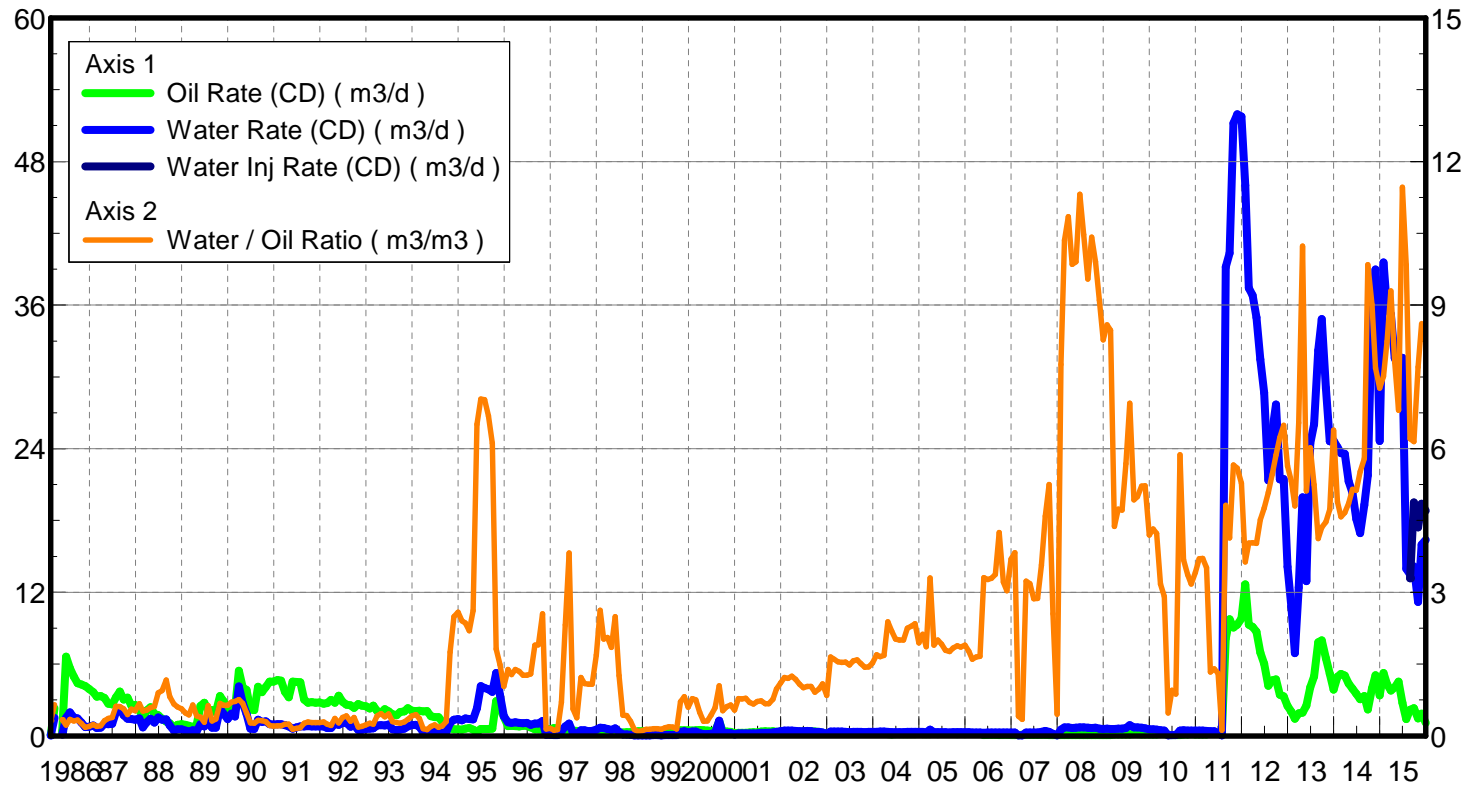
Date	Oil Rate (CD) m3/d	Water Rate (CD) m3/d	Water Oil Ratio m3/m3	Water Inj Rate (CD) m3/d	Cum Oil Prod Km3	Cum Water Prod Km3	Cum Water Inj Km3	VRR	Cum VRR
8/31/2002	0.29	0.43	1.51		2.76	1.83	0.00	0.000	0.000
9/30/2002	0.43	0.59	1.38		2.77	1.85	0.00	0.000	0.000
10/31/2002	0.39	0.55	1.40		2.78	1.87	0.00	0.000	0.000
11/30/2002	0.17	0.42	2.49		2.79	1.88	0.00	0.000	0.000
12/31/2002	0.14	0.37	2.71		2.79	1.89	0.00	0.000	0.000
1/31/2003	0.13	0.36	2.71		2.79	1.90	0.00	0.000	0.000
2/28/2003	0.19	0.48	2.58		2.80	1.92	0.00	0.000	0.000
3/31/2003	0.19	0.48	2.57		2.80	1.93	0.00	0.000	0.000
4/30/2003	0.19	0.45	2.41		2.81	1.94	0.00	0.000	0.000
5/31/2003	0.17	0.41	2.44		2.82	1.96	0.00	0.000	0.000
6/30/2003	0.16	0.38	2.35		2.82	1.97	0.00	0.000	0.000
7/31/2003	0.16	0.38	2.41		2.83	1.98	0.00	0.000	0.000
8/31/2003	0.16	0.38	2.38		2.83	1.99	0.00	0.000	0.000
9/30/2003	0.16	0.39	2.37		2.84	2.00	0.00	0.000	0.000
10/31/2003	0.17	0.38	2.27		2.84	2.02	0.00	0.000	0.000
11/30/2003	0.14	0.36	2.55		2.84	2.03	0.00	0.000	0.000
12/31/2003	0.14	0.34	2.47		2.85	2.04	0.00	0.000	0.000
1/31/2004	0.14	0.36	2.57		2.85	2.05	0.00	0.000	0.000
2/29/2004	0.14	0.38	2.62		2.86	2.06	0.00	0.000	0.000
3/31/2004	0.18	0.46	2.55		2.86	2.07	0.00	0.000	0.000
4/30/2004	0.12	0.32	2.59		2.87	2.08	0.00	0.000	0.000
5/31/2004	0.12	0.29	2.50		2.87	2.09	0.00	0.000	0.000
6/30/2004	0.13	0.29	2.17		2.87	2.10	0.00	0.000	0.000
7/31/2004	0.13	0.29	2.22		2.88	2.11	0.00	0.000	0.000
8/31/2004	0.14	0.29	2.14		2.88	2.12	0.00	0.000	0.000
9/30/2004	0.14	0.36	2.51		2.89	2.13	0.00	0.000	0.000
10/31/2004	0.15	0.38	2.59		2.89	2.14	0.00	0.000	0.000
11/30/2004	0.15	0.40	2.73		2.90	2.15	0.00	0.000	0.000
12/31/2004	0.15	0.38	2.54		2.90	2.16	0.00	0.000	0.000
1/31/2005	0.15	0.39	2.65		2.91	2.18	0.00	0.000	0.000
2/28/2005	0.15	0.40	2.58		2.91	2.19	0.00	0.000	0.000
3/31/2005	0.16	0.39	2.47		2.91	2.20	0.00	0.000	0.000
4/30/2005	0.15	0.38	2.46		2.92	2.21	0.00	0.000	0.000
5/31/2005	0.15	0.38	2.46		2.92	2.22	0.00	0.000	0.000
6/30/2005	0.15	0.40	2.61		2.93	2.24	0.00	0.000	0.000
7/31/2005	0.15	0.41	2.67		2.93	2.25	0.00	0.000	0.000
8/31/2005	0.15	0.39	2.52		2.94	2.26	0.00	0.000	0.000
9/30/2005	0.15	0.41	2.65		2.94	2.27	0.00	0.000	0.000
10/31/2005	0.15	0.41	2.70		2.95	2.29	0.00	0.000	0.000
11/30/2005	0.15	0.41	2.67		2.95	2.30	0.00	0.000	0.000
12/31/2005	0.15	0.38	2.48		2.96	2.31	0.00	0.000	0.000
1/31/2006	0.16	0.39	2.42		2.96	2.32	0.00	0.000	0.000
2/28/2006	0.16	0.39	2.48		2.97	2.33	0.00	0.000	0.000
3/31/2006	0.15	0.39	2.50		2.97	2.34	0.00	0.000	0.000
4/30/2006	0.16	0.39	2.47		2.98	2.36	0.00	0.000	0.000
5/31/2006	0.16	0.39	2.47		2.98	2.37	0.00	0.000	0.000

Date	Oil Rate (CD) m3/d	Water Rate (CD) m3/d	Water Oil Ratio m3/m3	Water Inj Rate (CD) m3/d	Cum Oil Prod Km3	Cum Water Prod Km3	Cum Water Inj Km3	VRR	Cum VRR
6/30/2006	0.08	0.76	9.08		2.98	2.39	0.00	0.000	0.000
7/31/2006	0.04	1.11	28.67		2.98	2.43	0.00	0.000	0.000
8/31/2006	0.04	1.11	28.58		2.99	2.46	0.00	0.000	0.000
9/30/2006	0.04	0.72	19.55		2.99	2.48	0.00	0.000	0.000
10/31/2006	0.06	0.58	9.94		2.99	2.50	0.00	0.000	0.000
11/30/2006	0.07	0.58	8.65		2.99	2.52	0.00	0.000	0.000
12/31/2006	0.07	0.55	8.14		2.99	2.53	0.00	0.000	0.000
1/31/2007	0.08	0.50	6.50		2.99	2.55	0.00	0.000	0.000
2/28/2007	0.07	0.50	6.67		3.00	2.56	0.00	0.000	0.000
3/31/2007	0.07	0.50	6.78		3.00	2.58	0.00	0.000	0.000
4/30/2007	0.08	0.50	6.57		3.00	2.59	0.00	0.000	0.000
5/31/2007	0.08	0.51	6.63		3.00	2.61	0.00	0.000	0.000
6/30/2007	0.08	0.51	6.65		3.01	2.62	0.00	0.000	0.000
7/31/2007	0.08	0.62	7.68		3.01	2.64	0.00	0.000	0.000
8/31/2007	0.08	0.63	8.13		3.01	2.66	0.00	0.000	0.000
9/30/2007	0.08	0.61	7.91		3.01	2.68	0.00	0.000	0.000
10/31/2007	0.07	0.50	7.38		3.02	2.70	0.00	0.000	0.000
11/30/2007	0.07	0.51	7.70		3.02	2.71	0.00	0.000	0.000
12/31/2007	0.06	0.56	8.65		3.02	2.73	0.00	0.000	0.000
1/31/2008	0.07	0.60	8.90		3.02	2.75	0.00	0.000	0.000
2/29/2008	0.07	0.59	9.05		3.02	2.77	0.00	0.000	0.000
3/31/2008	0.06	0.51	7.85		3.03	2.78	0.00	0.000	0.000
4/30/2008	0.07	0.50	7.45		3.03	2.80	0.00	0.000	0.000
5/31/2008	0.07	0.50	7.43		3.03	2.81	0.00	0.000	0.000
6/30/2008	0.07	0.58	8.70		3.03	2.83	0.00	0.000	0.000
7/31/2008	0.07	0.70	10.33		3.03	2.85	0.00	0.000	0.000
8/31/2008	0.07	0.62	8.68		3.04	2.87	0.00	0.000	0.000
9/30/2008	0.06	0.60	9.47		3.04	2.89	0.00	0.000	0.000
10/31/2008	0.07	0.61	9.00		3.04	2.91	0.00	0.000	0.000
11/30/2008	0.07	0.60	9.00		3.04	2.92	0.00	0.000	0.000
12/31/2008	0.07	0.58	8.57		3.04	2.94	0.00	0.000	0.000
1/31/2009	0.07	0.51	7.14		3.05	2.96	0.00	0.000	0.000
2/28/2009	0.07	0.57	7.95		3.05	2.97	0.00	0.000	0.000
3/31/2009	0.07	0.50	7.33		3.05	2.99	0.00	0.000	0.000
4/30/2009	0.07	0.47	7.00		3.05	3.00	0.00	0.000	0.000
5/31/2009	0.07	0.47	6.90		3.05	3.02	0.00	0.000	0.000
6/30/2009	0.06	0.52	8.21		3.06	3.03	0.00	0.000	0.000
7/31/2009	0.06	0.51	7.90		3.06	3.05	0.00	0.000	0.000
8/31/2009	0.07	0.53	7.86		3.06	3.07	0.00	0.000	0.000
9/30/2009	0.07	0.53	7.52		3.06	3.08	0.00	0.000	0.000
10/31/2009	0.07	0.47	6.90		3.06	3.10	0.00	0.000	0.000
11/30/2009	0.07	0.49	7.40		3.07	3.11	0.00	0.000	0.000
12/31/2009	0.02	0.15	7.50		3.07	3.12	0.00	0.000	0.000
7/31/2011	0.14	0.00	0.00		3.07	3.12	0.00	0.000	0.000
8/31/2011	0.00	14.61			3.07	3.57	0.00	0.000	0.000
9/30/2011	1.25	36.11	28.97		3.11	4.65	0.00	0.000	0.000

Date	Oil Rate (CD) m3/d	Water Rate (CD) m3/d	Water Oil Ratio m3/m3	Water Inj Rate (CD) m3/d	Cum Oil Prod Km3	Cum Water Prod Km3	Cum Water Inj Km3	VRR	Cum VRR
10/31/2011	1.87	45.25	24.22		3.17	6.05	0.00	0.000	0.000
11/30/2011	2.76	41.48	15.01		3.25	7.30	0.00	0.000	0.000
12/31/2011	3.64	43.07	11.84		3.36	8.63	0.00	0.000	0.000
1/31/2012	4.94	43.13	8.74		3.52	9.97	0.00	0.000	0.000
2/29/2012	4.64	41.08	8.84		3.65	11.16	0.00	0.000	0.000
3/31/2012	4.70	41.54	8.84		3.80	12.45	0.00	0.000	0.000
4/30/2012	4.88	42.85	8.78		3.94	13.74	0.00	0.000	0.000
5/31/2012	5.74	49.86	8.69		4.12	15.28	0.00	0.000	0.000
6/30/2012	5.00	44.10	8.83		4.27	16.60	0.00	0.000	0.000
7/31/2012	2.70	24.68	9.14		4.35	17.37	0.00	0.000	0.000
8/31/2012	4.96	51.00	10.28		4.51	18.95	0.00	0.000	0.000
9/30/2012	5.22	58.48	11.21		4.66	20.71	0.00	0.000	0.000
10/31/2012	5.14	58.42	11.38		4.82	22.52	0.00	0.000	0.000
11/30/2012	6.59	60.75	9.22		5.02	24.34	0.00	0.000	0.000
12/31/2012	7.70	64.63	8.39		5.26	26.34	0.00	0.000	0.000
1/31/2013	7.47	62.14	8.32		5.49	28.27	0.00	0.000	0.000
2/28/2013	7.96	60.46	7.59		5.71	29.96	0.00	0.000	0.000
3/31/2013	8.13	61.75	7.59		5.97	31.88	0.00	0.000	0.000
4/30/2013	6.57	56.78	8.65		6.16	33.58	0.00	0.000	0.000
5/31/2013	5.45	43.98	8.07		6.33	34.94	0.00	0.000	0.000
6/30/2013	5.93	47.92	8.08		6.51	36.38	0.00	0.000	0.000
7/31/2013	5.98	48.40	8.09		6.70	37.88	0.00	0.000	0.000
8/31/2013	8.05	52.11	6.47		6.95	39.50	0.00	0.000	0.000
9/30/2013	6.71	50.34	7.50		7.15	41.01	0.00	0.000	0.000
10/31/2013	5.14	38.49	7.48		7.31	42.20	0.00	0.000	0.000
11/30/2013	4.69	37.72	8.04		7.45	43.33	0.00	0.000	0.000
12/31/2013	4.12	35.75	8.69		7.57	44.44	0.00	0.000	0.000
1/31/2014	5.04	33.55	6.66		7.73	45.48	0.00	0.000	0.000
2/28/2014	5.01	33.50	6.68		7.87	46.42	0.00	0.000	0.000
3/31/2014	4.90	33.49	6.84		8.02	47.45	0.00	0.000	0.000
4/30/2014	4.09	24.14	5.90		8.15	48.18	0.00	0.000	0.000
5/31/2014	3.62	16.59	4.59		8.26	48.69	0.00	0.000	0.000
6/30/2014	3.65	58.56	16.05		8.37	50.45	0.00	0.000	0.000
7/31/2014	3.11	57.98	18.65		8.46	52.25	0.00	0.000	0.000
8/31/2014	2.41	42.13	17.47		8.54	53.55	0.00	0.000	0.000
9/30/2014	1.76	43.31	24.58		8.59	54.85	0.00	0.000	0.000
10/31/2014	2.28	56.64	24.82		8.66	56.61	0.00	0.000	0.000
11/30/2014	1.71	25.00	14.66		8.71	57.36	0.00	0.000	0.000
12/31/2014	1.73	36.80	21.30		8.77	58.50	0.00	0.000	0.000
1/31/2015	1.65	9.60	5.82		8.82	58.80	0.00	0.000	0.000
2/28/2015	1.59	9.31	5.84		8.86	59.06	0.00	0.000	0.000
3/31/2015	1.42	9.37	6.61		8.91	59.35	0.00	0.000	0.000
4/30/2015	1.99	7.40	3.72		8.97	59.57	0.00	0.000	0.000
5/31/2015	2.55	6.74	2.64		9.04	59.78	0.00	0.000	0.000
6/30/2015	1.53	26.57	17.36		9.09	60.58	0.00	0.000	0.000
7/31/2015	1.44	58.03	40.25		9.14	62.37	0.00	0.000	0.000

Date	Oil Rate (CD) m3/d	Water Rate (CD) m3/d	Water Oil Ratio m3/m3	Water Inj Rate (CD) m3/d	Cum Oil Prod Km3	Cum Water Prod Km3	Cum Water Inj Km3	VRR	Cum VRR
8/31/2015	2.06	64.69	31.43		9.20	64.38	0.00	0.000	0.000
9/30/2015	2.06	62.67	30.42		9.26	66.26	0.00	0.000	0.000
10/31/2015	1.45	4.57	3.15		9.31	66.40	0.00	0.000	0.000
11/30/2015	2.04	8.85	4.35		9.37	66.67	0.00	0.000	0.000
12/31/2015	1.10	7.46	6.78		9.40	66.90	0.00	0.000	0.000

Oil Formation Vol Factor : 1.00150 m3/m3
 Water Formation Vol Factor : 1.00150 m3/m3
 Water / Oil Ratio : 15.23 m3/m3
 Pattern : 06/09-29-010-28
 Inj Set: Daily
 Unit#8BKKN
 March 10, 2016
 Operator: Tundra_O&G_Prtshp
 Oil Rate (CD) : 1.08 m3/d
 Water Rate (CD) : 16.38 m3/d
 Water Inj Rate (CD) : 18.81 m3/d



Date	Oil Rate (CD) m3/d	Water Rate (CD) m3/d	Water Oil Ratio m3/m3	Water Inj Rate (CD) m3/d	Cum Oil Prod Km3	Cum Water Prod Km3	Cum Water Inj Km3	VRR	Cum VRR
2/28/1986	0.10	0.03	0.32		0.00	0.00	0.00	0.000	0.000
3/31/1986	2.32	1.51	0.65		0.07	0.05	0.00	0.000	0.000
5/31/1986	0.38	0.13	0.34		0.09	0.05	0.00	0.000	0.000
6/30/1986	6.62	1.51	0.23		0.29	0.10	0.00	0.000	0.000
7/31/1986	5.66	1.96	0.35		0.46	0.16	0.00	0.000	0.000
8/31/1986	4.97	1.55	0.31		0.61	0.21	0.00	0.000	0.000
9/30/1986	4.41	1.46	0.33		0.75	0.25	0.00	0.000	0.000
10/31/1986	4.30	1.12	0.26		0.88	0.28	0.00	0.000	0.000
11/30/1986	4.17	0.74	0.18		1.01	0.31	0.00	0.000	0.000
12/31/1986	3.92	0.78	0.20		1.13	0.33	0.00	0.000	0.000
1/31/1987	3.64	0.86	0.24		1.24	0.36	0.00	0.000	0.000
2/28/1987	3.29	0.66	0.20		1.33	0.38	0.00	0.000	0.000
3/31/1987	3.33	0.70	0.21		1.44	0.40	0.00	0.000	0.000
4/30/1987	3.18	1.00	0.32		1.53	0.43	0.00	0.000	0.000
5/31/1987	2.69	0.98	0.37		1.61	0.46	0.00	0.000	0.000
6/30/1987	2.62	1.01	0.39		1.69	0.49	0.00	0.000	0.000
7/31/1987	3.22	1.99	0.62		1.79	0.55	0.00	0.000	0.000
8/31/1987	3.72	2.28	0.61		1.91	0.62	0.00	0.000	0.000
9/30/1987	3.05	1.73	0.57		2.00	0.67	0.00	0.000	0.000
10/31/1987	3.21	1.42	0.44		2.10	0.72	0.00	0.000	0.000
11/30/1987	2.53	1.41	0.56		2.17	0.76	0.00	0.000	0.000
12/31/1987	2.57	1.35	0.52		2.25	0.80	0.00	0.000	0.000
1/31/1988	2.17	1.46	0.67		2.32	0.85	0.00	0.000	0.000
2/29/1988	1.40	0.72	0.52		2.36	0.87	0.00	0.000	0.000
3/31/1988	2.13	1.15	0.54		2.43	0.90	0.00	0.000	0.000
4/30/1988	2.41	1.42	0.59		2.50	0.95	0.00	0.000	0.000
5/31/1988	1.84	1.12	0.61		2.56	0.98	0.00	0.000	0.000
6/30/1988	1.72	1.54	0.90		2.61	1.03	0.00	0.000	0.000
7/31/1988	1.43	1.35	0.94		2.65	1.07	0.00	0.000	0.000
8/31/1988	1.19	1.39	1.17		2.69	1.11	0.00	0.000	0.000
9/30/1988	1.05	0.86	0.82		2.72	1.14	0.00	0.000	0.000
10/31/1988	0.67	0.45	0.67		2.74	1.15	0.00	0.000	0.000
11/30/1988	0.93	0.56	0.60		2.77	1.17	0.00	0.000	0.000
12/31/1988	0.97	0.55	0.57		2.80	1.18	0.00	0.000	0.000
1/31/1989	0.94	0.45	0.48		2.83	1.20	0.00	0.000	0.000
2/28/1989	0.84	0.37	0.44		2.85	1.21	0.00	0.000	0.000
3/31/1989	0.73	0.47	0.65		2.88	1.22	0.00	0.000	0.000
4/30/1989	0.93	0.39	0.42		2.90	1.24	0.00	0.000	0.000
5/31/1989	2.50	0.97	0.39		2.98	1.27	0.00	0.000	0.000
6/30/1989	2.76	0.79	0.29		3.06	1.29	0.00	0.000	0.000
7/31/1989	2.12	1.33	0.63		3.13	1.33	0.00	0.000	0.000
8/31/1989	2.15	0.67	0.31		3.20	1.35	0.00	0.000	0.000
9/30/1989	1.97	0.69	0.35		3.25	1.37	0.00	0.000	0.000
10/31/1989	3.34	2.26	0.68		3.36	1.44	0.00	0.000	0.000
11/30/1989	2.91	1.87	0.64		3.45	1.50	0.00	0.000	0.000
12/31/1989	2.18	1.39	0.64		3.51	1.54	0.00	0.000	0.000

Date	Oil Rate (CD) m3/d	Water Rate (CD) m3/d	Water Oil Ratio m3/m3	Water Inj Rate (CD) m3/d	Cum Oil Prod Km3	Cum Water Prod Km3	Cum Water Inj Km3	VRR	Cum VRR
1/31/1990	2.63	1.86	0.71		3.60	1.60	0.00	0.000	0.000
2/28/1990	2.26	1.62	0.72		3.66	1.64	0.00	0.000	0.000
3/31/1990	5.44	4.13	0.76		3.83	1.77	0.00	0.000	0.000
4/30/1990	4.05	2.75	0.68		3.95	1.85	0.00	0.000	0.000
5/31/1990	3.84	1.83	0.48		4.07	1.91	0.00	0.000	0.000
6/30/1990	2.22	0.60	0.27		4.13	1.93	0.00	0.000	0.000
7/31/1990	2.15	0.57	0.27		4.20	1.95	0.00	0.000	0.000
8/31/1990	4.12	1.35	0.33		4.33	1.99	0.00	0.000	0.000
9/30/1990	3.66	1.17	0.32		4.44	2.02	0.00	0.000	0.000
10/31/1990	4.08	1.22	0.30		4.56	2.06	0.00	0.000	0.000
11/30/1990	4.55	0.99	0.22		4.70	2.09	0.00	0.000	0.000
12/31/1990	4.53	0.94	0.21		4.84	2.12	0.00	0.000	0.000
1/31/1991	4.67	0.98	0.21		4.99	2.15	0.00	0.000	0.000
2/28/1991	4.60	0.98	0.21		5.12	2.18	0.00	0.000	0.000
3/31/1991	3.67	0.90	0.24		5.23	2.21	0.00	0.000	0.000
4/30/1991	3.23	0.80	0.25		5.33	2.23	0.00	0.000	0.000
5/31/1991	4.53	0.61	0.13		5.47	2.25	0.00	0.000	0.000
6/30/1991	4.50	0.71	0.16		5.60	2.27	0.00	0.000	0.000
7/31/1991	4.48	0.78	0.17		5.74	2.29	0.00	0.000	0.000
8/31/1991	3.04	0.80	0.26		5.83	2.32	0.00	0.000	0.000
9/30/1991	2.78	0.81	0.29		5.92	2.34	0.00	0.000	0.000
10/31/1991	2.81	0.78	0.28		6.00	2.37	0.00	0.000	0.000
11/30/1991	2.78	0.78	0.28		6.09	2.39	0.00	0.000	0.000
12/31/1991	2.80	0.78	0.28		6.17	2.42	0.00	0.000	0.000
1/31/1992	2.69	0.78	0.29		6.26	2.44	0.00	0.000	0.000
2/29/1992	2.74	0.67	0.24		6.34	2.46	0.00	0.000	0.000
3/31/1992	3.00	0.65	0.22		6.43	2.48	0.00	0.000	0.000
4/30/1992	2.77	1.01	0.36		6.51	2.51	0.00	0.000	0.000
5/31/1992	3.36	0.92	0.27		6.62	2.54	0.00	0.000	0.000
6/30/1992	2.84	1.09	0.38		6.70	2.57	0.00	0.000	0.000
7/31/1992	2.61	1.10	0.42		6.78	2.61	0.00	0.000	0.000
8/31/1992	2.55	0.78	0.30		6.86	2.63	0.00	0.000	0.000
9/30/1992	2.35	0.91	0.39		6.93	2.66	0.00	0.000	0.000
10/31/1992	2.67	0.49	0.18		7.02	2.67	0.00	0.000	0.000
11/30/1992	2.53	0.50	0.20		7.09	2.69	0.00	0.000	0.000
12/31/1992	2.47	0.56	0.23		7.17	2.70	0.00	0.000	0.000
1/31/1993	2.29	0.60	0.26		7.24	2.72	0.00	0.000	0.000
2/28/1993	2.53	0.63	0.25		7.31	2.74	0.00	0.000	0.000
3/31/1993	2.08	0.87	0.42		7.38	2.77	0.00	0.000	0.000
4/30/1993	1.94	0.91	0.47		7.43	2.79	0.00	0.000	0.000
5/31/1993	2.22	0.88	0.40		7.50	2.82	0.00	0.000	0.000
6/30/1993	2.06	0.94	0.46		7.56	2.85	0.00	0.000	0.000
7/31/1993	1.81	0.55	0.30		7.62	2.87	0.00	0.000	0.000
8/31/1993	1.72	0.48	0.28		7.67	2.88	0.00	0.000	0.000
9/30/1993	1.98	0.52	0.26		7.73	2.90	0.00	0.000	0.000
10/31/1993	2.05	0.60	0.29		7.80	2.92	0.00	0.000	0.000

Date	Oil Rate (CD) m3/d	Water Rate (CD) m3/d	Water Oil Ratio m3/m3	Water Inj Rate (CD) m3/d	Cum Oil Prod Km3	Cum Water Prod Km3	Cum Water Inj Km3	VRR	Cum VRR
11/30/1993	2.31	0.80	0.34		7.87	2.94	0.00	0.000	0.000
12/31/1993	2.11	0.89	0.42		7.93	2.97	0.00	0.000	0.000
1/31/1994	2.06	0.91	0.44		8.00	3.00	0.00	0.000	0.000
2/28/1994	2.10	0.77	0.37		8.05	3.02	0.00	0.000	0.000
3/31/1994	2.05	0.32	0.15		8.12	3.03	0.00	0.000	0.000
4/30/1994	2.06	0.27	0.13		8.18	3.04	0.00	0.000	0.000
5/31/1994	1.66	0.32	0.19		8.23	3.05	0.00	0.000	0.000
6/30/1994	1.57	0.37	0.23		8.28	3.06	0.00	0.000	0.000
7/31/1994	1.57	0.27	0.17		8.33	3.06	0.00	0.000	0.000
8/31/1994	1.16	0.25	0.21		8.36	3.07	0.00	0.000	0.000
9/30/1994	1.07	0.32	0.30		8.40	3.08	0.00	0.000	0.000
10/31/1994	0.62	1.08	1.75		8.41	3.12	0.00	0.000	0.000
11/30/1994	0.54	1.35	2.49		8.43	3.16	0.00	0.000	0.000
12/31/1994	0.54	1.40	2.58		8.45	3.20	0.00	0.000	0.000
1/31/1995	0.54	1.29	2.40		8.46	3.24	0.00	0.000	0.000
2/28/1995	0.61	1.45	2.36		8.48	3.28	0.00	0.000	0.000
3/31/1995	0.65	1.42	2.19		8.50	3.32	0.00	0.000	0.000
4/30/1995	0.53	1.39	2.62		8.52	3.37	0.00	0.000	0.000
5/31/1995	0.35	2.31	6.51		8.53	3.44	0.00	0.000	0.000
6/30/1995	0.59	4.15	7.04		8.55	3.56	0.00	0.000	0.000
7/31/1995	0.57	4.01	7.02		8.56	3.69	0.00	0.000	0.000
8/31/1995	0.58	3.88	6.68		8.58	3.81	0.00	0.000	0.000
9/30/1995	0.60	3.67	6.12		8.60	3.92	0.00	0.000	0.000
10/31/1995	2.90	5.26	1.82		8.69	4.08	0.00	0.000	0.000
11/30/1995	2.29	3.41	1.49		8.76	4.18	0.00	0.000	0.000
12/31/1995	1.59	1.65	1.03		8.81	4.23	0.00	0.000	0.000
1/31/1996	0.81	1.13	1.39		8.83	4.27	0.00	0.000	0.000
2/29/1996	0.86	1.10	1.28		8.86	4.30	0.00	0.000	0.000
3/31/1996	0.83	1.15	1.39		8.88	4.33	0.00	0.000	0.000
4/30/1996	0.80	1.08	1.35		8.91	4.37	0.00	0.000	0.000
5/31/1996	0.84	1.06	1.26		8.93	4.40	0.00	0.000	0.000
6/30/1996	0.85	1.08	1.27		8.96	4.43	0.00	0.000	0.000
7/31/1996	0.72	0.93	1.30		8.98	4.46	0.00	0.000	0.000
8/31/1996	0.55	1.04	1.89		9.00	4.49	0.00	0.000	0.000
9/30/1996	0.54	1.03	1.90		9.02	4.52	0.00	0.000	0.000
10/31/1996	0.49	1.26	2.55		9.03	4.56	0.00	0.000	0.000
11/30/1996	0.61	0.09	0.15		9.05	4.57	0.00	0.000	0.000
12/31/1996	0.55	0.09	0.16		9.07	4.57	0.00	0.000	0.000
1/31/1997	0.66	0.08	0.12		9.09	4.57	0.00	0.000	0.000
2/28/1997	0.58	0.07	0.13		9.10	4.57	0.00	0.000	0.000
3/31/1997	0.54	0.38	0.71		9.12	4.59	0.00	0.000	0.000
4/30/1997	0.34	0.79	2.31		9.13	4.61	0.00	0.000	0.000
5/31/1997	0.27	1.02	3.82		9.14	4.64	0.00	0.000	0.000
6/30/1997	0.45	0.25	0.57		9.15	4.65	0.00	0.000	0.000
7/31/1997	0.43	0.16	0.38		9.16	4.65	0.00	0.000	0.000
8/31/1997	0.38	0.47	1.22		9.18	4.67	0.00	0.000	0.000

Date	Oil Rate (CD) m3/d	Water Rate (CD) m3/d	Water Oil Ratio m3/m3	Water Inj Rate (CD) m3/d	Cum Oil Prod Km3	Cum Water Prod Km3	Cum Water Inj Km3	VRR	Cum VRR
9/30/1997	0.42	0.46	1.09		9.19	4.68	0.00	0.000	0.000
10/31/1997	0.37	0.40	1.08		9.20	4.69	0.00	0.000	0.000
11/30/1997	0.38	0.41	1.08		9.21	4.71	0.00	0.000	0.000
12/31/1997	0.30	0.51	1.69		9.22	4.72	0.00	0.000	0.000
1/31/1998	0.26	0.68	2.63		9.23	4.74	0.00	0.000	0.000
2/28/1998	0.33	0.66	2.02		9.24	4.76	0.00	0.000	0.000
3/31/1998	0.28	0.58	2.06		9.25	4.78	0.00	0.000	0.000
4/30/1998	0.27	0.50	1.85		9.26	4.79	0.00	0.000	0.000
5/31/1998	0.25	0.62	2.49		9.26	4.81	0.00	0.000	0.000
6/30/1998	0.27	0.34	1.26		9.27	4.82	0.00	0.000	0.000
7/31/1998	0.28	0.12	0.43		9.28	4.83	0.00	0.000	0.000
8/31/1998	0.31	0.13	0.43		9.29	4.83	0.00	0.000	0.000
9/30/1998	0.30	0.09	0.31		9.30	4.83	0.00	0.000	0.000
10/31/1998	0.27	0.04	0.13		9.31	4.84	0.00	0.000	0.000
11/30/1998	0.38	0.03	0.09		9.32	4.84	0.00	0.000	0.000
12/31/1998	0.38	0.04	0.11		9.33	4.84	0.00	0.000	0.000
1/31/1999	0.37	0.05	0.14		9.34	4.84	0.00	0.000	0.000
2/28/1999	0.37	0.05	0.14		9.35	4.84	0.00	0.000	0.000
3/31/1999	0.38	0.06	0.15		9.36	4.84	0.00	0.000	0.000
4/30/1999	0.37	0.06	0.15		9.37	4.84	0.00	0.000	0.000
5/31/1999	0.38	0.05	0.14		9.39	4.85	0.00	0.000	0.000
6/30/1999	0.37	0.06	0.17		9.40	4.85	0.00	0.000	0.000
7/31/1999	0.38	0.07	0.19		9.41	4.85	0.00	0.000	0.000
8/31/1999	0.39	0.07	0.18		9.42	4.85	0.00	0.000	0.000
9/30/1999	0.40	0.06	0.14		9.43	4.85	0.00	0.000	0.000
10/31/1999	0.47	0.33	0.71		9.45	4.86	0.00	0.000	0.000
11/30/1999	0.47	0.39	0.82		9.46	4.88	0.00	0.000	0.000
12/31/1999	0.47	0.28	0.60		9.48	4.88	0.00	0.000	0.000
1/31/2000	0.45	0.35	0.78		9.49	4.90	0.00	0.000	0.000
2/29/2000	0.47	0.35	0.75		9.50	4.91	0.00	0.000	0.000
3/31/2000	0.48	0.24	0.49		9.52	4.91	0.00	0.000	0.000
4/30/2000	0.47	0.14	0.30		9.53	4.92	0.00	0.000	0.000
5/31/2000	0.45	0.14	0.31		9.55	4.92	0.00	0.000	0.000
6/30/2000	0.41	0.18	0.44		9.56	4.93	0.00	0.000	0.000
7/31/2000	0.40	0.24	0.59		9.57	4.93	0.00	0.000	0.000
8/31/2000	1.22	1.28	1.04		9.61	4.97	0.00	0.000	0.000
9/30/2000	0.36	0.19	0.52		9.62	4.98	0.00	0.000	0.000
10/31/2000	0.35	0.22	0.61		9.63	4.99	0.00	0.000	0.000
11/30/2000	0.34	0.22	0.64		9.64	4.99	0.00	0.000	0.000
12/31/2000	0.23	0.13	0.54		9.65	5.00	0.00	0.000	0.000
1/31/2001	0.26	0.20	0.78		9.66	5.00	0.00	0.000	0.000
2/28/2001	0.27	0.21	0.77		9.66	5.01	0.00	0.000	0.000
3/31/2001	0.27	0.21	0.78		9.67	5.02	0.00	0.000	0.000
4/30/2001	0.28	0.20	0.70		9.68	5.02	0.00	0.000	0.000
5/31/2001	0.31	0.20	0.66		9.69	5.03	0.00	0.000	0.000
6/30/2001	0.29	0.21	0.72		9.70	5.03	0.00	0.000	0.000

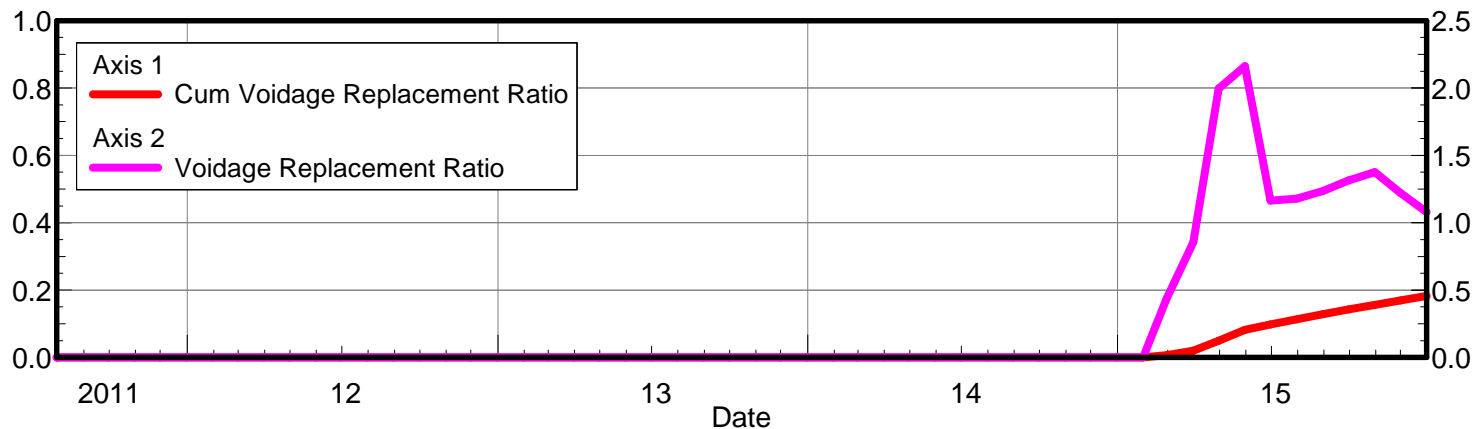
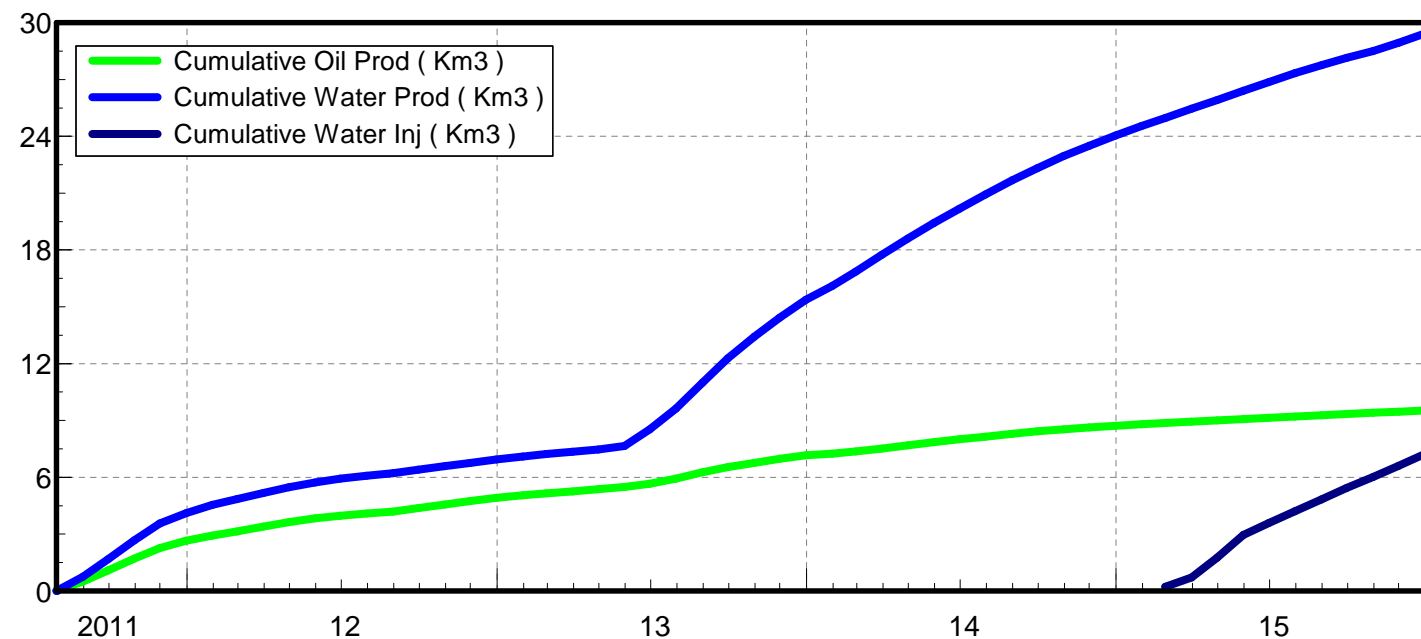
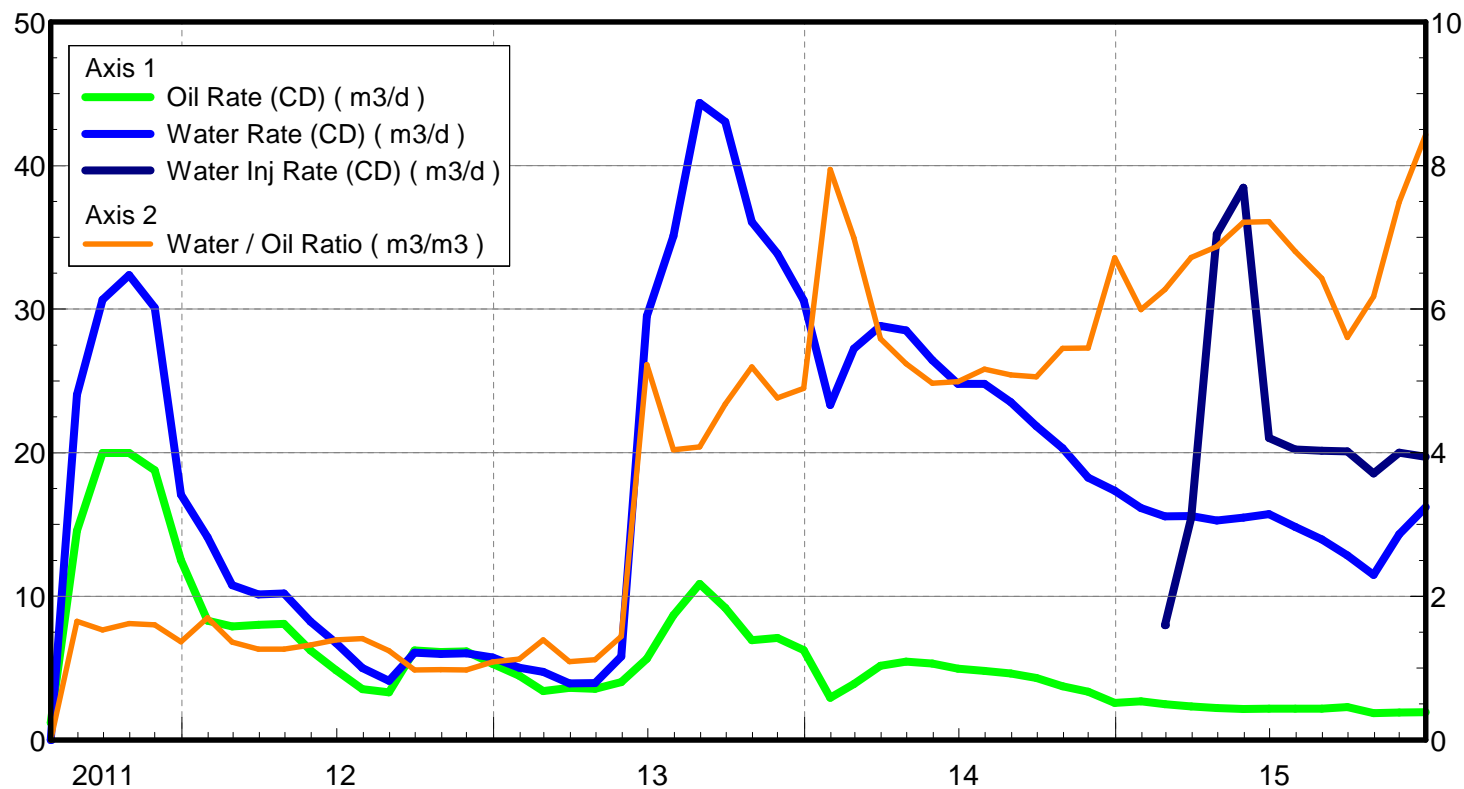
Date	Oil Rate (CD) m3/d	Water Rate (CD) m3/d	Water Oil Ratio m3/m3	Water Inj Rate (CD) m3/d	Cum Oil Prod Km3	Cum Water Prod Km3	Cum Water Inj Km3	VRR	Cum VRR
7/31/2001	0.36	0.27	0.73		9.71	5.04	0.00	0.000	0.000
8/31/2001	0.40	0.27	0.67		9.72	5.05	0.00	0.000	0.000
9/30/2001	0.36	0.24	0.67		9.73	5.06	0.00	0.000	0.000
10/31/2001	0.38	0.29	0.76		9.75	5.07	0.00	0.000	0.000
11/30/2001	0.34	0.34	0.98		9.76	5.08	0.00	0.000	0.000
12/31/2001	0.36	0.40	1.11		9.77	5.09	0.00	0.000	0.000
1/31/2002	0.37	0.45	1.22		9.78	5.10	0.00	0.000	0.000
2/28/2002	0.38	0.45	1.20		9.79	5.12	0.00	0.000	0.000
3/31/2002	0.36	0.45	1.25		9.80	5.13	0.00	0.000	0.000
4/30/2002	0.35	0.41	1.18		9.81	5.14	0.00	0.000	0.000
5/31/2002	0.35	0.38	1.08		9.82	5.15	0.00	0.000	0.000
6/30/2002	0.37	0.38	1.01		9.83	5.17	0.00	0.000	0.000
7/31/2002	0.39	0.41	1.03		9.85	5.18	0.00	0.000	0.000
8/31/2002	0.38	0.39	1.03		9.86	5.19	0.00	0.000	0.000
9/30/2002	0.37	0.34	0.91		9.87	5.20	0.00	0.000	0.000
10/31/2002	0.35	0.34	0.98		9.88	5.21	0.00	0.000	0.000
11/30/2002	0.27	0.29	1.09		9.89	5.22	0.00	0.000	0.000
12/31/2002	0.21	0.18	0.85		9.89	5.23	0.00	0.000	0.000
1/31/2003	0.21	0.35	1.65		9.90	5.24	0.00	0.000	0.000
2/28/2003	0.23	0.36	1.60		9.91	5.25	0.00	0.000	0.000
3/31/2003	0.23	0.35	1.55		9.91	5.26	0.00	0.000	0.000
4/30/2003	0.23	0.35	1.54		9.92	5.27	0.00	0.000	0.000
5/31/2003	0.22	0.34	1.54		9.93	5.28	0.00	0.000	0.000
6/30/2003	0.21	0.32	1.48		9.93	5.29	0.00	0.000	0.000
7/31/2003	0.22	0.34	1.57		9.94	5.30	0.00	0.000	0.000
8/31/2003	0.21	0.34	1.59		9.95	5.31	0.00	0.000	0.000
9/30/2003	0.22	0.34	1.51		9.95	5.32	0.00	0.000	0.000
10/31/2003	0.22	0.32	1.43		9.96	5.33	0.00	0.000	0.000
11/30/2003	0.23	0.33	1.44		9.97	5.34	0.00	0.000	0.000
12/31/2003	0.22	0.33	1.52		9.97	5.35	0.00	0.000	0.000
1/31/2004	0.20	0.35	1.70		9.98	5.36	0.00	0.000	0.000
2/29/2004	0.22	0.37	1.66		9.99	5.37	0.00	0.000	0.000
3/31/2004	0.21	0.36	1.68		9.99	5.38	0.00	0.000	0.000
4/30/2004	0.14	0.33	2.38		10.00	5.39	0.00	0.000	0.000
5/31/2004	0.14	0.30	2.19		10.00	5.40	0.00	0.000	0.000
6/30/2004	0.15	0.30	2.02		10.01	5.41	0.00	0.000	0.000
7/31/2004	0.15	0.30	2.00		10.01	5.42	0.00	0.000	0.000
8/31/2004	0.15	0.30	2.00		10.02	5.43	0.00	0.000	0.000
9/30/2004	0.15	0.33	2.25		10.02	5.44	0.00	0.000	0.000
10/31/2004	0.15	0.33	2.29		10.02	5.45	0.00	0.000	0.000
11/30/2004	0.15	0.34	2.34		10.03	5.46	0.00	0.000	0.000
12/31/2004	0.17	0.33	1.94		10.03	5.47	0.00	0.000	0.000
1/31/2005	0.16	0.34	2.12		10.04	5.48	0.00	0.000	0.000
2/28/2005	0.16	0.29	1.86		10.04	5.49	0.00	0.000	0.000
3/31/2005	0.16	0.53	3.30		10.05	5.50	0.00	0.000	0.000
4/30/2005	0.16	0.31	1.90		10.05	5.51	0.00	0.000	0.000

Date	Oil Rate (CD) m3/d	Water Rate (CD) m3/d	Water Oil Ratio m3/m3	Water Inj Rate (CD) m3/d	Cum Oil Prod Km3	Cum Water Prod Km3	Cum Water Inj Km3	VRR	Cum VRR
5/31/2005	0.16	0.32	2.00		10.06	5.52	0.00	0.000	0.000
6/30/2005	0.16	0.31	1.92		10.06	5.53	0.00	0.000	0.000
7/31/2005	0.17	0.30	1.79		10.07	5.54	0.00	0.000	0.000
8/31/2005	0.16	0.29	1.76		10.07	5.55	0.00	0.000	0.000
9/30/2005	0.16	0.30	1.84		10.08	5.56	0.00	0.000	0.000
10/31/2005	0.16	0.30	1.88		10.08	5.57	0.00	0.000	0.000
11/30/2005	0.16	0.30	1.86		10.09	5.58	0.00	0.000	0.000
12/31/2005	0.16	0.30	1.90		10.09	5.59	0.00	0.000	0.000
1/31/2006	0.17	0.30	1.77		10.10	5.60	0.00	0.000	0.000
2/28/2006	0.17	0.28	1.60		10.10	5.60	0.00	0.000	0.000
3/31/2006	0.16	0.27	1.65		10.11	5.61	0.00	0.000	0.000
4/30/2006	0.17	0.28	1.66		10.11	5.62	0.00	0.000	0.000
5/31/2006	0.07	0.25	3.30		10.12	5.63	0.00	0.000	0.000
6/30/2006	0.09	0.28	3.27		10.12	5.64	0.00	0.000	0.000
7/31/2006	0.09	0.29	3.30		10.12	5.65	0.00	0.000	0.000
8/31/2006	0.09	0.29	3.37		10.12	5.66	0.00	0.000	0.000
9/30/2006	0.07	0.28	4.25		10.13	5.66	0.00	0.000	0.000
10/31/2006	0.09	0.29	3.21		10.13	5.67	0.00	0.000	0.000
11/30/2006	0.10	0.29	3.03		10.13	5.68	0.00	0.000	0.000
12/31/2006	0.07	0.27	3.70		10.13	5.69	0.00	0.000	0.000
1/31/2007	0.07	0.28	3.83		10.14	5.70	0.00	0.000	0.000
2/28/2007	0.08	0.03	0.41		10.14	5.70	0.00	0.000	0.000
3/31/2007	0.08	0.03	0.35		10.14	5.70	0.00	0.000	0.000
4/30/2007	0.09	0.28	3.23		10.14	5.71	0.00	0.000	0.000
5/31/2007	0.09	0.29	3.18		10.15	5.72	0.00	0.000	0.000
6/30/2007	0.10	0.28	2.86		10.15	5.73	0.00	0.000	0.000
7/31/2007	0.10	0.29	2.87		10.15	5.74	0.00	0.000	0.000
8/31/2007	0.10	0.35	3.57		10.16	5.75	0.00	0.000	0.000
9/30/2007	0.09	0.41	4.59		10.16	5.76	0.00	0.000	0.000
10/31/2007	0.06	0.34	5.25		10.16	5.77	0.00	0.000	0.000
11/30/2007	0.07	0.17	2.55		10.16	5.77	0.00	0.000	0.000
12/31/2007	0.06	0.03	0.45		10.16	5.78	0.00	0.000	0.000
1/31/2008	0.07	0.53	7.76		10.17	5.79	0.00	0.000	0.000
2/29/2008	0.07	0.71	10.35		10.17	5.81	0.00	0.000	0.000
3/31/2008	0.06	0.70	10.85		10.17	5.83	0.00	0.000	0.000
4/30/2008	0.07	0.66	9.85		10.17	5.85	0.00	0.000	0.000
5/31/2008	0.07	0.67	9.90		10.17	5.87	0.00	0.000	0.000
6/30/2008	0.06	0.72	11.32		10.18	5.90	0.00	0.000	0.000
7/31/2008	0.07	0.71	10.48		10.18	5.92	0.00	0.000	0.000
8/31/2008	0.07	0.68	9.55		10.18	5.94	0.00	0.000	0.000
9/30/2008	0.06	0.66	10.42		10.18	5.96	0.00	0.000	0.000
10/31/2008	0.07	0.67	9.90		10.18	5.98	0.00	0.000	0.000
11/30/2008	0.07	0.61	9.10		10.19	6.00	0.00	0.000	0.000
12/31/2008	0.07	0.59	8.27		10.19	6.02	0.00	0.000	0.000
1/31/2009	0.07	0.61	8.59		10.19	6.03	0.00	0.000	0.000
2/28/2009	0.07	0.57	8.47		10.19	6.05	0.00	0.000	0.000

Date	Oil Rate (CD) m3/d	Water Rate (CD) m3/d	Water Oil Ratio m3/m3	Water Inj Rate (CD) m3/d	Cum Oil Prod Km3	Cum Water Prod Km3	Cum Water Inj Km3	VRR	Cum VRR
3/31/2009	0.13	0.56	4.38		10.20	6.07	0.00	0.000	0.000
4/30/2009	0.13	0.60	4.74		10.20	6.09	0.00	0.000	0.000
5/31/2009	0.13	0.59	4.72		10.20	6.10	0.00	0.000	0.000
6/30/2009	0.12	0.66	5.69		10.21	6.12	0.00	0.000	0.000
7/31/2009	0.13	0.90	6.95		10.21	6.15	0.00	0.000	0.000
8/31/2009	0.15	0.72	4.93		10.22	6.17	0.00	0.000	0.000
9/30/2009	0.14	0.72	5.00		10.22	6.20	0.00	0.000	0.000
10/31/2009	0.13	0.69	5.22		10.22	6.22	0.00	0.000	0.000
11/30/2009	0.12	0.63	5.22		10.23	6.24	0.00	0.000	0.000
12/31/2009	0.13	0.55	4.20		10.23	6.25	0.00	0.000	0.000
1/31/2010	0.13	0.56	4.33		10.24	6.27	0.00	0.000	0.000
2/28/2010	0.13	0.53	4.23		10.24	6.29	0.00	0.000	0.000
3/31/2010	0.15	0.48	3.17		10.24	6.30	0.00	0.000	0.000
4/30/2010	0.15	0.44	2.91		10.25	6.31	0.00	0.000	0.000
5/31/2010	0.09	0.04	0.48		10.25	6.32	0.00	0.000	0.000
6/30/2010	0.07	0.06	0.95		10.25	6.32	0.00	0.000	0.000
7/31/2010	0.08	0.07	0.88		10.26	6.32	0.00	0.000	0.000
8/31/2010	0.08	0.45	5.88		10.26	6.33	0.00	0.000	0.000
9/30/2010	0.13	0.47	3.68		10.26	6.35	0.00	0.000	0.000
10/31/2010	0.13	0.45	3.37		10.27	6.36	0.00	0.000	0.000
11/30/2010	0.14	0.43	3.17		10.27	6.37	0.00	0.000	0.000
12/31/2010	0.13	0.45	3.41		10.27	6.39	0.00	0.000	0.000
1/31/2011	0.12	0.44	3.70		10.28	6.40	0.00	0.000	0.000
2/28/2011	0.12	0.45	3.71		10.28	6.41	0.00	0.000	0.000
3/31/2011	0.12	0.42	3.51		10.29	6.43	0.00	0.000	0.000
4/30/2011	0.29	0.39	1.33		10.29	6.44	0.00	0.000	0.000
5/31/2011	0.28	0.39	1.40		10.30	6.45	0.00	0.000	0.000
6/30/2011	0.17	0.23	1.31		10.31	6.46	0.00	0.000	0.000
7/31/2011	0.38	0.05	0.12		10.32	6.46	0.00	0.000	0.000
8/31/2011	8.13	39.20	4.82		10.57	7.67	0.00	0.000	0.000
9/30/2011	9.76	40.34	4.13		10.86	8.88	0.00	0.000	0.000
10/31/2011	9.05	51.21	5.66		11.15	10.47	0.00	0.000	0.000
11/30/2011	9.29	51.96	5.59		11.42	12.03	0.00	0.000	0.000
12/31/2011	9.81	51.75	5.28		11.73	13.64	0.00	0.000	0.000
1/31/2012	12.66	46.01	3.63		12.12	15.06	0.00	0.000	0.000
2/29/2012	9.29	37.42	4.03		12.39	16.15	0.00	0.000	0.000
3/31/2012	9.12	36.81	4.04		12.67	17.29	0.00	0.000	0.000
4/30/2012	8.70	34.96	4.02		12.93	18.34	0.00	0.000	0.000
5/31/2012	6.97	31.46	4.52		13.15	19.31	0.00	0.000	0.000
6/30/2012	6.03	28.67	4.75		13.33	20.17	0.00	0.000	0.000
7/31/2012	4.20	21.36	5.09		13.46	20.83	0.00	0.000	0.000
8/31/2012	4.65	25.39	5.46		13.61	21.62	0.00	0.000	0.000
9/30/2012	4.72	27.69	5.87		13.75	22.45	0.00	0.000	0.000
10/31/2012	3.44	21.43	6.24		13.85	23.12	0.00	0.000	0.000
11/30/2012	3.31	21.45	6.49		13.95	23.76	0.00	0.000	0.000
12/31/2012	2.50	14.12	5.64		14.03	24.20	0.00	0.000	0.000

Date	Oil Rate (CD) m3/d	Water Rate (CD) m3/d	Water Oil Ratio m3/m3	Water Inj Rate (CD) m3/d	Cum Oil Prod Km3	Cum Water Prod Km3	Cum Water Inj Km3	VRR	Cum VRR
1/31/2013	2.03	10.80	5.32		14.09	24.53	0.00	0.000	0.000
2/28/2013	1.44	6.92	4.81		14.13	24.73	0.00	0.000	0.000
3/31/2013	1.90	12.41	6.54		14.19	25.11	0.00	0.000	0.000
4/30/2013	1.95	19.94	10.23		14.25	25.71	0.00	0.000	0.000
5/31/2013	2.53	12.93	5.12		14.33	26.11	0.00	0.000	0.000
6/30/2013	4.06	24.42	6.02		14.45	26.84	0.00	0.000	0.000
7/31/2013	4.96	26.04	5.25		14.60	27.65	0.00	0.000	0.000
8/31/2013	7.82	32.21	4.12		14.85	28.65	0.00	0.000	0.000
9/30/2013	7.99	34.84	4.36		15.09	29.69	0.00	0.000	0.000
10/31/2013	6.50	29.05	4.47		15.29	30.59	0.00	0.000	0.000
11/30/2013	5.21	24.63	4.73		15.44	31.33	0.00	0.000	0.000
12/31/2013	3.86	24.67	6.39		15.56	32.10	0.00	0.000	0.000
1/31/2014	4.93	24.14	4.89		15.72	32.85	0.00	0.000	0.000
2/28/2014	5.17	23.63	4.57		15.86	33.51	0.00	0.000	0.000
3/31/2014	5.05	23.57	4.66		16.02	34.24	0.00	0.000	0.000
4/30/2014	4.38	21.27	4.86		16.15	34.88	0.00	0.000	0.000
5/31/2014	3.94	20.31	5.15		16.27	35.51	0.00	0.000	0.000
6/30/2014	3.53	18.11	5.13		16.38	36.05	0.00	0.000	0.000
7/31/2014	3.07	16.96	5.52		16.47	36.57	0.00	0.000	0.000
8/31/2014	3.33	19.29	5.80		16.58	37.17	0.00	0.000	0.000
9/30/2014	2.21	21.78	9.85		16.64	37.83	0.00	0.000	0.000
10/31/2014	3.96	35.70	9.01		16.77	38.93	0.00	0.000	0.000
11/30/2014	5.07	38.97	7.68		16.92	40.10	0.00	0.000	0.000
12/31/2014	3.39	24.64	7.26		17.02	40.87	0.00	0.000	0.000
1/31/2015	5.27	39.56	7.51		17.19	42.09	0.00	0.000	0.000
2/28/2015	4.33	35.68	8.24		17.31	43.09	0.00	0.000	0.000
3/31/2015	3.79	35.23	9.30		17.42	44.18	0.00	0.000	0.000
4/30/2015	4.04	31.56	7.81		17.55	45.13	0.00	0.000	0.000
5/31/2015	4.53	30.83	6.80		17.69	46.09	0.00	0.000	0.000
6/30/2015	2.76	31.61	11.47		17.77	47.03	0.00	0.000	0.000
7/31/2015	1.42	13.96	9.84		17.81	47.47	0.00	0.000	0.000
8/31/2015	2.17	13.48	6.21	13.16	17.88	47.88	0.41	0.833	0.006
9/30/2015	2.31	14.18	6.15	19.50	17.95	48.31	0.99	1.172	0.015
10/31/2015	1.45	11.19	7.71	17.42	17.99	48.66	1.53	1.367	0.023
11/30/2015	1.86	15.98	8.62	19.40	18.05	49.14	2.12	1.080	0.031
12/31/2015	1.08	16.38	15.23	18.81	18.08	49.64	2.70	1.073	0.039

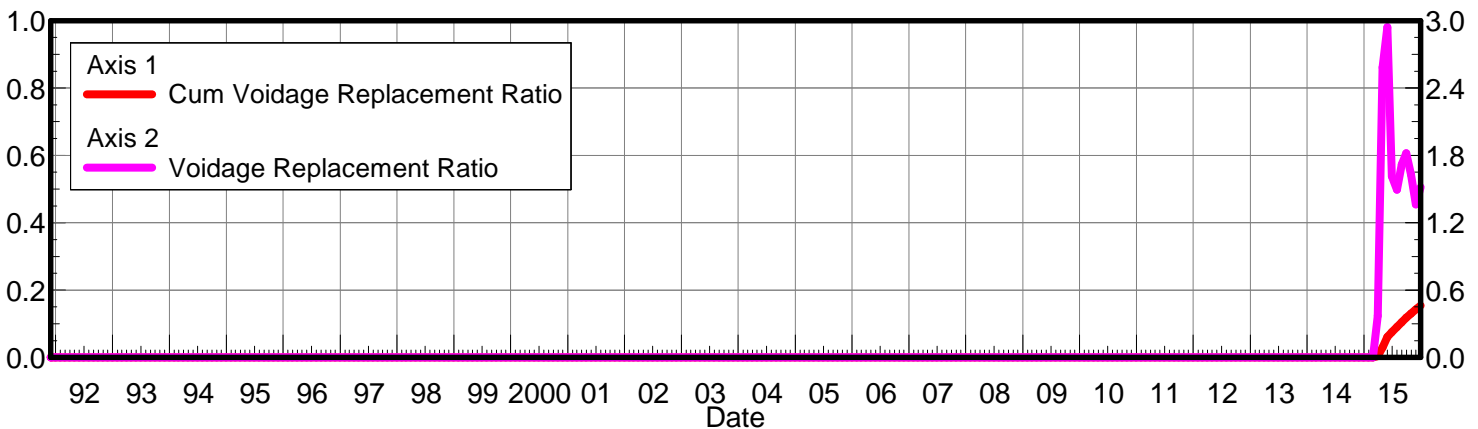
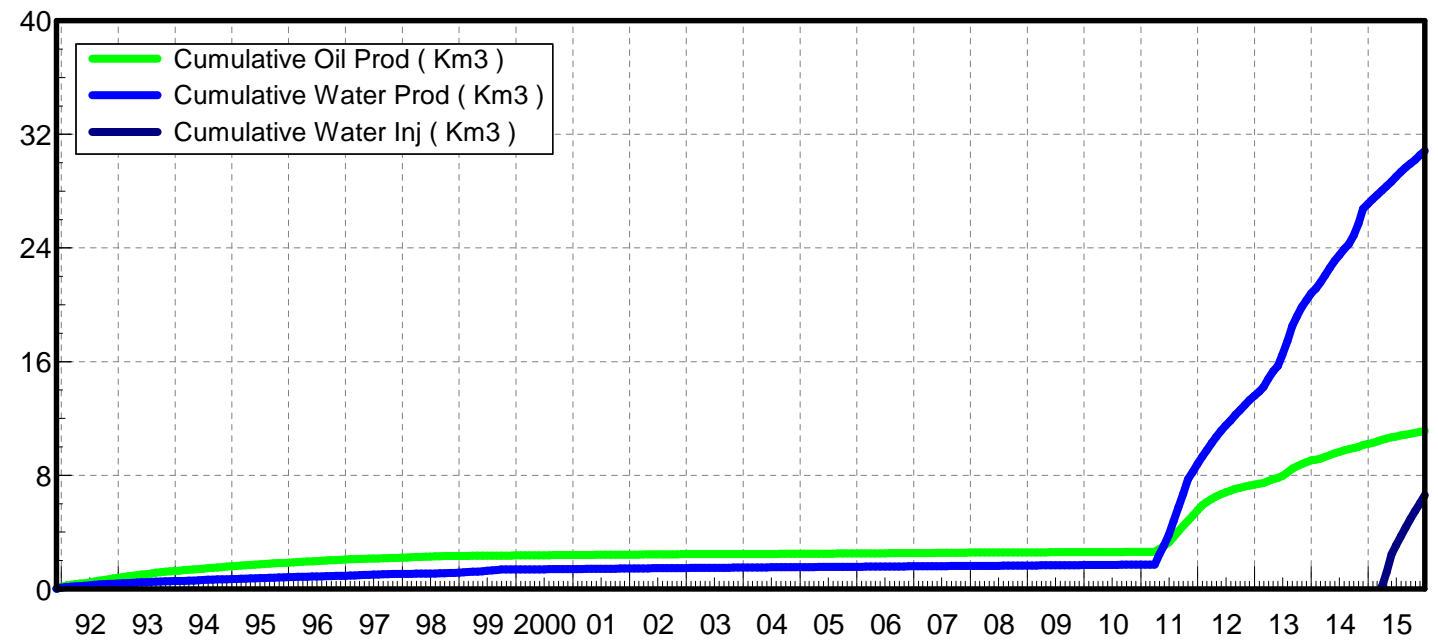
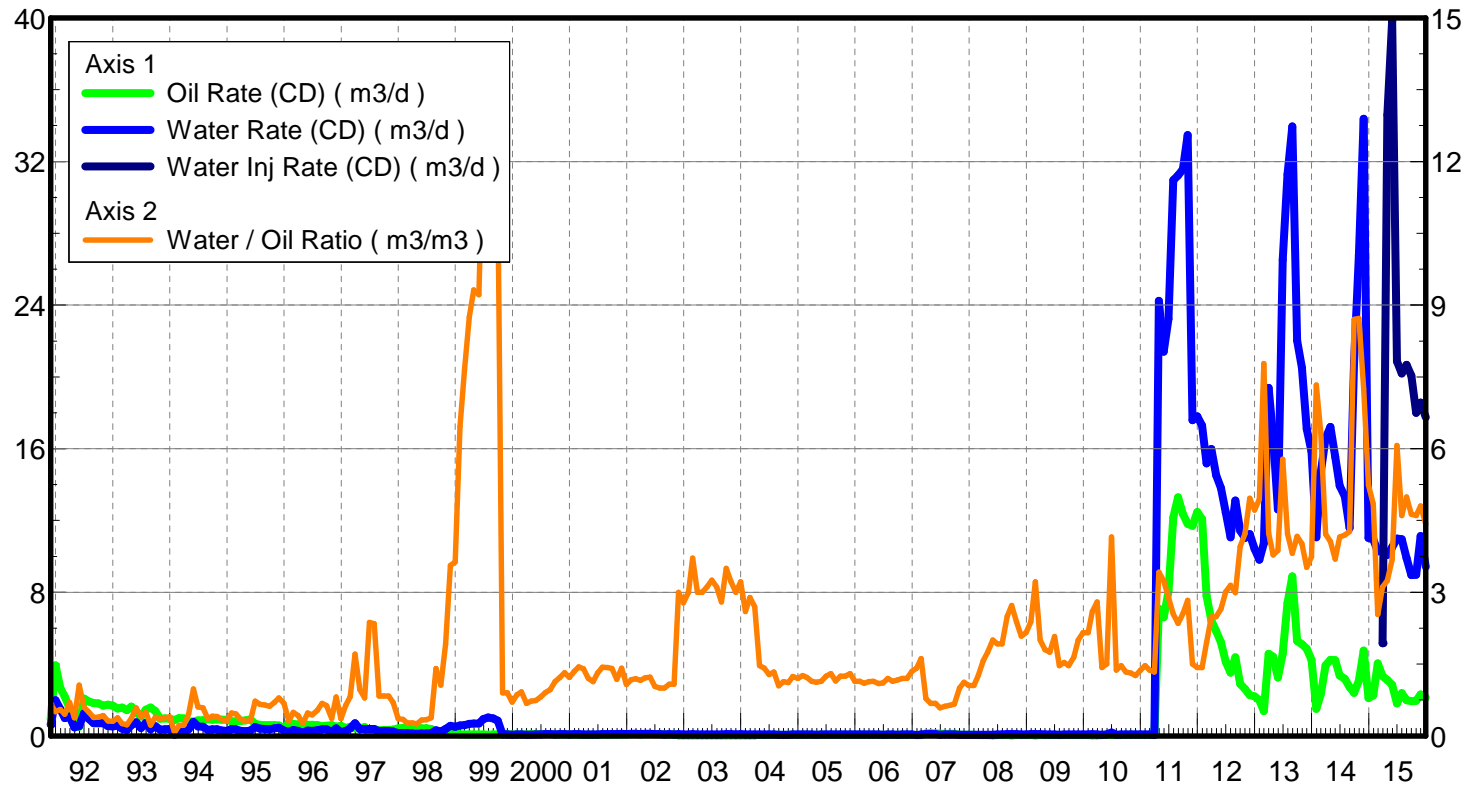
Oil Formation Vol Factor : 1.00150 m3/m3
 Water Formation Vol Factor : 1.00150 m3/m3
 Water / Oil Ratio : 8.43 m3/m3
 Pattern : 00/16-29-010-28
 Inj Set : Daly Unit#8BKKN
 March 10, 2016
 Operator: Tundra_O&G_Prtshp
 Oil Rate (CD) : 1.92 m3/d
 Water Rate (CD) : 16.21 m3/d
 Water Inj Rate (CD) : 19.71 m3/d



Date	Oil Rate (CD) m3/d	Water Rate (CD) m3/d	Water Oil Ratio m3/m3	Water Inj Rate (CD) m3/d	Cum Oil Prod Km3	Cum Water Prod Km3	Cum Water Inj Km3	VRR	Cum VRR
7/31/2011	1.19	0.00	0.00		0.04	0.00	0.00	0.000	0.000
8/31/2011	14.57	24.05	1.65		0.49	0.75	0.00	0.000	0.000
9/30/2011	19.99	30.65	1.53		1.09	1.66	0.00	0.000	0.000
10/31/2011	19.99	32.38	1.62		1.71	2.67	0.00	0.000	0.000
11/30/2011	18.78	30.11	1.60		2.27	3.57	0.00	0.000	0.000
12/31/2011	12.51	17.08	1.37		2.66	4.10	0.00	0.000	0.000
1/31/2012	8.31	14.12	1.70		2.92	4.54	0.00	0.000	0.000
2/29/2012	7.90	10.77	1.36		3.15	4.85	0.00	0.000	0.000
3/31/2012	8.01	10.14	1.27		3.39	5.17	0.00	0.000	0.000
4/30/2012	8.07	10.20	1.26		3.64	5.47	0.00	0.000	0.000
5/31/2012	6.24	8.25	1.32		3.83	5.73	0.00	0.000	0.000
6/30/2012	4.85	6.75	1.39		3.97	5.93	0.00	0.000	0.000
7/31/2012	3.54	5.00	1.41		4.08	6.08	0.00	0.000	0.000
8/31/2012	3.32	4.12	1.24		4.19	6.21	0.00	0.000	0.000
9/30/2012	6.22	6.07	0.98		4.37	6.39	0.00	0.000	0.000
10/31/2012	6.11	5.99	0.98		4.56	6.58	0.00	0.000	0.000
11/30/2012	6.17	6.02	0.98		4.75	6.76	0.00	0.000	0.000
12/31/2012	5.29	5.73	1.08		4.91	6.94	0.00	0.000	0.000
1/31/2013	4.48	5.03	1.12		5.05	7.09	0.00	0.000	0.000
2/28/2013	3.40	4.74	1.39		5.15	7.23	0.00	0.000	0.000
3/31/2013	3.62	3.95	1.09		5.26	7.35	0.00	0.000	0.000
4/30/2013	3.56	3.97	1.12		5.37	7.47	0.00	0.000	0.000
5/31/2013	4.03	5.82	1.44		5.49	7.65	0.00	0.000	0.000
6/30/2013	5.64	29.51	5.23		5.66	8.53	0.00	0.000	0.000
7/31/2013	8.69	35.09	4.04		5.93	9.62	0.00	0.000	0.000
8/31/2013	10.87	44.36	4.08		6.27	11.00	0.00	0.000	0.000
9/30/2013	9.21	43.05	4.68		6.54	12.29	0.00	0.000	0.000
10/31/2013	6.94	36.06	5.19		6.76	13.41	0.00	0.000	0.000
11/30/2013	7.11	33.85	4.76		6.97	14.42	0.00	0.000	0.000
12/31/2013	6.25	30.60	4.90		7.16	15.37	0.00	0.000	0.000
1/31/2014	2.94	23.32	7.95		7.25	16.09	0.00	0.000	0.000
2/28/2014	3.90	27.24	6.99		7.36	16.86	0.00	0.000	0.000
3/31/2014	5.16	28.82	5.59		7.52	17.75	0.00	0.000	0.000
4/30/2014	5.44	28.52	5.24		7.69	18.61	0.00	0.000	0.000
5/31/2014	5.32	26.45	4.97		7.85	19.43	0.00	0.000	0.000
6/30/2014	4.97	24.79	4.99		8.00	20.17	0.00	0.000	0.000
7/31/2014	4.80	24.79	5.16		8.15	20.94	0.00	0.000	0.000
8/31/2014	4.63	23.53	5.08		8.29	21.67	0.00	0.000	0.000
9/30/2014	4.32	21.84	5.06		8.42	22.32	0.00	0.000	0.000
10/31/2014	3.73	20.32	5.45		8.54	22.95	0.00	0.000	0.000
11/30/2014	3.35	18.27	5.46		8.64	23.50	0.00	0.000	0.000
12/31/2014	2.58	17.34	6.72		8.72	24.04	0.00	0.000	0.000
1/31/2015	2.69	16.15	5.99		8.80	24.54	0.00	0.000	0.000
2/28/2015	2.48	15.57	6.28	8.00	8.87	24.97	0.22	0.439	0.006
3/31/2015	2.32	15.59	6.72	15.45	8.94	25.46	0.70	0.855	0.020
4/30/2015	2.23	15.28	6.87	35.23	9.01	25.92	1.76	1.995	0.050

Date	Oil Rate (CD) m3/d	Water Rate (CD) m3/d	Water Oil Ratio m3/m3	Water Inj Rate (CD) m3/d	Cum Oil Prod Km3	Cum Water Prod Km3	Cum Water Inj Km3	VRR	Cum VRR
5/31/2015	2.15	15.49	7.21	38.45	9.08	26.40	2.95	2.162	0.082
6/30/2015	2.18	15.72	7.22	21.03	9.14	26.87	3.58	1.165	0.098
7/31/2015	2.18	14.84	6.80	20.23	9.21	27.33	4.21	1.178	0.113
8/31/2015	2.17	13.97	6.43	20.13	9.28	27.76	4.83	1.236	0.128
9/30/2015	2.29	12.84	5.61	20.10	9.35	28.15	5.44	1.315	0.143
10/31/2015	1.86	11.49	6.18	18.55	9.40	28.50	6.01	1.376	0.156
11/30/2015	1.91	14.32	7.49	20.00	9.46	28.93	6.61	1.222	0.169
12/31/2015	1.92	16.21	8.43	19.71	9.52	29.43	7.22	1.079	0.182

Oil Formation Vol Factor : 0.67 m3/m3
 Water Formation Vol Factor : 1.00150 m3/m3
 Water / Oil Ratio : 4.43 m3/m3
 Pattern : 00/01-32-010-28
 Inj Set: Daly Unit#8BKKN
 March 10, 2016
 Operator: Tundra_O&G_Prtshp
 Oil Rate (CD) : 2.13 m3/d
 Water Rate (CD) : 9.42 m3/d
 Water Inj Rate (CD) : 17.74 m3/d



Date	Oil Rate (CD) m3/d	Water Rate (CD) m3/d	Water Oil Ratio m3/m3	Water Inj Rate (CD) m3/d	Cum Oil Prod Km3	Cum Water Prod Km3	Cum Water Inj Km3	VRR	Cum VRR
11/30/1991	0.96	0.64	0.67		0.03	0.02	0.00	0.000	0.000
12/31/1991	3.93	2.00	0.51		0.15	0.08	0.00	0.000	0.000
1/31/1992	2.67	1.48	0.55		0.23	0.13	0.00	0.000	0.000
2/29/1992	2.18	0.99	0.45		0.30	0.16	0.00	0.000	0.000
3/31/1992	1.54	1.07	0.70		0.34	0.19	0.00	0.000	0.000
4/30/1992	1.22	0.47	0.38		0.38	0.20	0.00	0.000	0.000
5/31/1992	0.51	0.55	1.06		0.40	0.22	0.00	0.000	0.000
6/30/1992	2.08	1.25	0.60		0.46	0.26	0.00	0.000	0.000
7/31/1992	1.92	0.95	0.50		0.52	0.29	0.00	0.000	0.000
8/31/1992	1.83	0.70	0.38		0.58	0.31	0.00	0.000	0.000
9/30/1992	1.81	0.71	0.39		0.63	0.33	0.00	0.000	0.000
10/31/1992	1.68	0.71	0.42		0.68	0.35	0.00	0.000	0.000
11/30/1992	1.74	0.54	0.31		0.73	0.37	0.00	0.000	0.000
12/31/1992	1.69	0.52	0.31		0.79	0.38	0.00	0.000	0.000
1/31/1993	1.53	0.58	0.38		0.83	0.40	0.00	0.000	0.000
2/28/1993	1.58	0.41	0.26		0.88	0.41	0.00	0.000	0.000
3/31/1993	1.43	0.33	0.23		0.92	0.42	0.00	0.000	0.000
4/30/1993	1.63	0.59	0.36		0.97	0.44	0.00	0.000	0.000
5/31/1993	1.29	0.75	0.59		1.01	0.47	0.00	0.000	0.000
6/30/1993	1.08	0.44	0.41		1.04	0.48	0.00	0.000	0.000
7/31/1993	1.45	0.73	0.50		1.09	0.50	0.00	0.000	0.000
8/31/1993	1.59	0.36	0.23		1.14	0.51	0.00	0.000	0.000
9/30/1993	1.38	0.54	0.39		1.18	0.53	0.00	0.000	0.000
10/31/1993	0.95	0.35	0.36		1.21	0.54	0.00	0.000	0.000
11/30/1993	0.97	0.37	0.38		1.24	0.55	0.00	0.000	0.000
12/31/1993	0.95	0.38	0.40		1.27	0.56	0.00	0.000	0.000
1/31/1994	0.88	0.06	0.07		1.29	0.56	0.00	0.000	0.000
2/28/1994	0.99	0.21	0.22		1.32	0.57	0.00	0.000	0.000
3/31/1994	0.98	0.22	0.23		1.35	0.58	0.00	0.000	0.000
4/30/1994	0.81	0.37	0.46		1.38	0.59	0.00	0.000	0.000
5/31/1994	0.79	0.78	0.98		1.40	0.61	0.00	0.000	0.000
6/30/1994	0.87	0.53	0.60		1.43	0.63	0.00	0.000	0.000
7/31/1994	0.86	0.50	0.58		1.45	0.64	0.00	0.000	0.000
8/31/1994	0.94	0.33	0.36		1.48	0.65	0.00	0.000	0.000
9/30/1994	0.90	0.37	0.41		1.51	0.66	0.00	0.000	0.000
10/31/1994	0.92	0.37	0.40		1.54	0.68	0.00	0.000	0.000
11/30/1994	0.90	0.30	0.34		1.57	0.69	0.00	0.000	0.000
12/31/1994	0.90	0.28	0.31		1.59	0.69	0.00	0.000	0.000
1/31/1995	0.82	0.39	0.48		1.62	0.71	0.00	0.000	0.000
2/28/1995	0.82	0.38	0.46		1.64	0.72	0.00	0.000	0.000
3/31/1995	0.83	0.28	0.34		1.67	0.73	0.00	0.000	0.000
4/30/1995	0.86	0.26	0.31		1.69	0.73	0.00	0.000	0.000
5/31/1995	0.92	0.29	0.32		1.72	0.74	0.00	0.000	0.000
6/30/1995	0.67	0.48	0.72		1.74	0.76	0.00	0.000	0.000
7/31/1995	0.61	0.40	0.66		1.76	0.77	0.00	0.000	0.000
8/31/1995	0.60	0.39	0.65		1.78	0.78	0.00	0.000	0.000

Date	Oil Rate (CD) m3/d	Water Rate (CD) m3/d	Water Oil Ratio m3/m3	Water Inj Rate (CD) m3/d	Cum Oil Prod Km3	Cum Water Prod Km3	Cum Water Inj Km3	VRR	Cum VRR
9/30/1995	0.60	0.37	0.62		1.80	0.79	0.00	0.000	0.000
10/31/1995	0.59	0.41	0.70		1.82	0.81	0.00	0.000	0.000
11/30/1995	0.59	0.46	0.79		1.83	0.82	0.00	0.000	0.000
12/31/1995	0.43	0.29	0.68		1.85	0.83	0.00	0.000	0.000
1/31/1996	0.74	0.23	0.31		1.87	0.84	0.00	0.000	0.000
2/29/1996	0.66	0.32	0.49		1.89	0.84	0.00	0.000	0.000
3/31/1996	0.64	0.27	0.43		1.91	0.85	0.00	0.000	0.000
4/30/1996	0.66	0.17	0.26		1.93	0.86	0.00	0.000	0.000
5/31/1996	0.61	0.29	0.48		1.95	0.87	0.00	0.000	0.000
6/30/1996	0.62	0.27	0.44		1.97	0.88	0.00	0.000	0.000
7/31/1996	0.60	0.32	0.53		1.99	0.89	0.00	0.000	0.000
8/31/1996	0.55	0.37	0.68		2.00	0.90	0.00	0.000	0.000
9/30/1996	0.57	0.36	0.64		2.02	0.91	0.00	0.000	0.000
10/31/1996	0.61	0.22	0.36		2.04	0.91	0.00	0.000	0.000
11/30/1996	0.51	0.41	0.81		2.05	0.93	0.00	0.000	0.000
12/31/1996	0.56	0.20	0.36		2.07	0.93	0.00	0.000	0.000
1/31/1997	0.45	0.28	0.64		2.08	0.94	0.00	0.000	0.000
2/28/1997	0.50	0.41	0.82		2.10	0.95	0.00	0.000	0.000
3/31/1997	0.41	0.71	1.71		2.11	0.98	0.00	0.000	0.000
4/30/1997	0.41	0.39	0.97		2.12	0.99	0.00	0.000	0.000
5/31/1997	0.49	0.39	0.79		2.14	1.00	0.00	0.000	0.000
6/30/1997	0.16	0.39	2.37		2.14	1.01	0.00	0.000	0.000
7/31/1997	0.17	0.39	2.35		2.15	1.02	0.00	0.000	0.000
8/31/1997	0.31	0.26	0.84		2.16	1.03	0.00	0.000	0.000
9/30/1997	0.33	0.28	0.83		2.17	1.04	0.00	0.000	0.000
10/31/1997	0.33	0.27	0.83		2.18	1.05	0.00	0.000	0.000
11/30/1997	0.35	0.24	0.70		2.19	1.06	0.00	0.000	0.000
12/31/1997	0.41	0.15	0.36		2.20	1.06	0.00	0.000	0.000
1/31/1998	0.44	0.15	0.34		2.22	1.06	0.00	0.000	0.000
2/28/1998	0.55	0.15	0.27		2.23	1.07	0.00	0.000	0.000
3/31/1998	0.47	0.13	0.27		2.25	1.07	0.00	0.000	0.000
4/30/1998	0.46	0.11	0.25		2.26	1.08	0.00	0.000	0.000
5/31/1998	0.42	0.14	0.33		2.27	1.08	0.00	0.000	0.000
6/30/1998	0.42	0.14	0.34		2.29	1.08	0.00	0.000	0.000
7/31/1998	0.39	0.15	0.38		2.30	1.09	0.00	0.000	0.000
8/31/1998	0.22	0.31	1.41		2.30	1.10	0.00	0.000	0.000
9/30/1998	0.22	0.24	1.06		2.31	1.11	0.00	0.000	0.000
10/31/1998	0.20	0.38	1.92		2.32	1.12	0.00	0.000	0.000
11/30/1998	0.16	0.57	3.56		2.32	1.13	0.00	0.000	0.000
12/31/1998	0.14	0.52	3.64		2.33	1.15	0.00	0.000	0.000
1/31/1999	0.09	0.58	6.46		2.33	1.17	0.00	0.000	0.000
2/28/1999	0.08	0.60	7.64		2.33	1.19	0.00	0.000	0.000
3/31/1999	0.08	0.68	8.75		2.33	1.21	0.00	0.000	0.000
4/30/1999	0.07	0.68	9.32		2.34	1.23	0.00	0.000	0.000
5/31/1999	0.07	0.68	9.22		2.34	1.25	0.00	0.000	0.000
6/30/1999	0.07	0.93	12.68		2.34	1.28	0.00	0.000	0.000

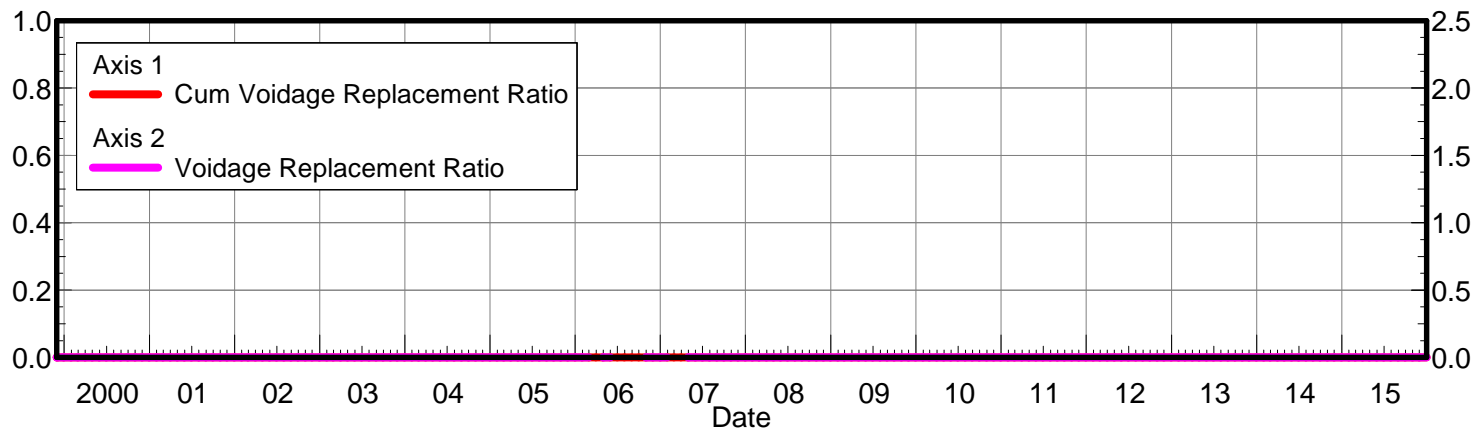
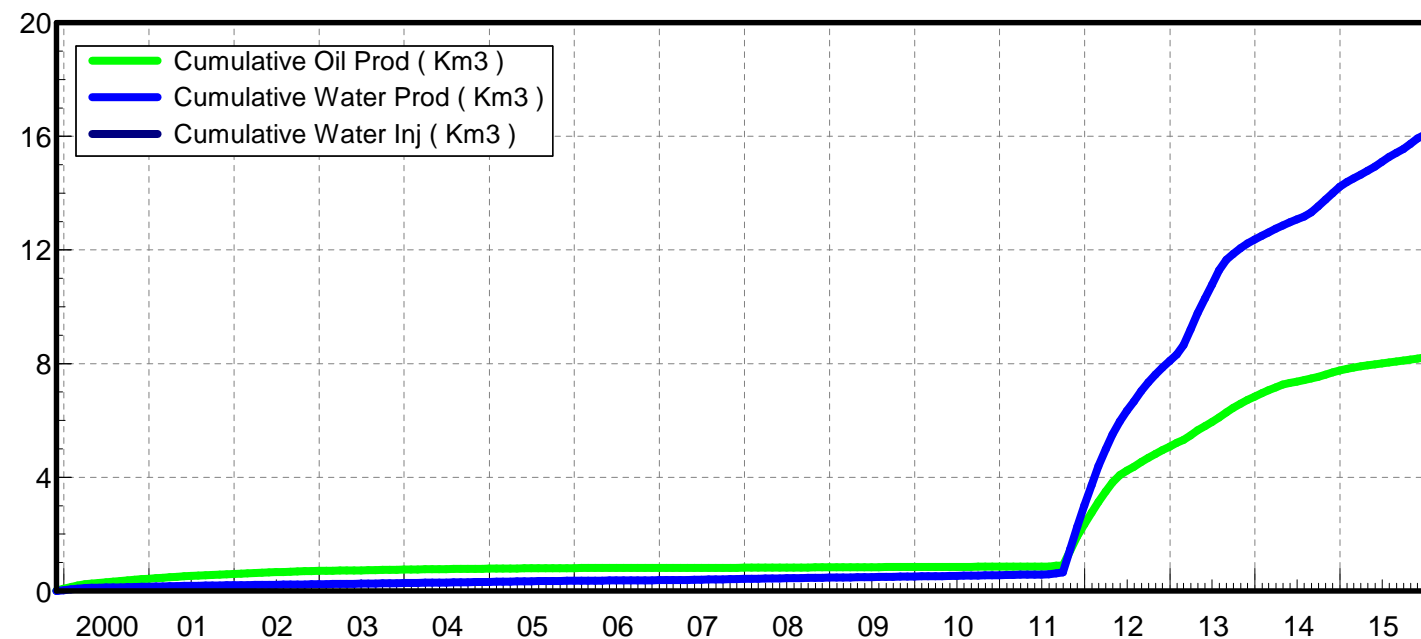
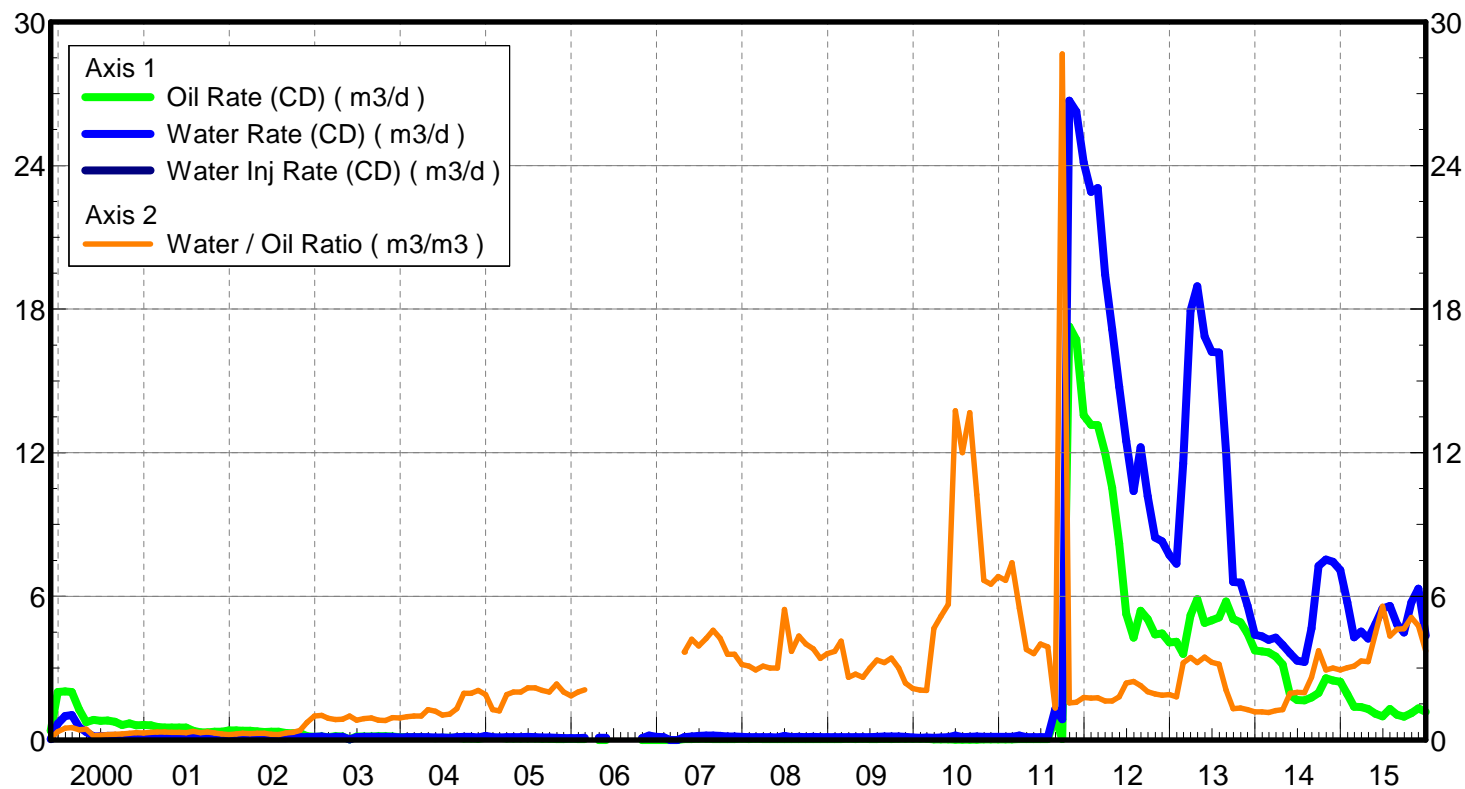
Date	Oil Rate (CD) m3/d	Water Rate (CD) m3/d	Water Oil Ratio m3/m3	Water Inj Rate (CD) m3/d	Cum Oil Prod Km3	Cum Water Prod Km3	Cum Water Inj Km3	VRR	Cum VRR
7/31/1999	0.07	1.02	14.41		2.34	1.31	0.00	0.000	0.000
8/31/1999	0.08	0.97	12.58		2.34	1.34	0.00	0.000	0.000
9/30/1999	0.07	0.85	11.55		2.35	1.36	0.00	0.000	0.000
10/31/1999	0.09	0.08	0.90		2.35	1.37	0.00	0.000	0.000
11/30/1999	0.10	0.09	0.90		2.35	1.37	0.00	0.000	0.000
12/31/1999	0.09	0.06	0.70		2.36	1.37	0.00	0.000	0.000
1/31/2000	0.09	0.08	0.86		2.36	1.37	0.00	0.000	0.000
2/29/2000	0.09	0.08	0.92		2.36	1.38	0.00	0.000	0.000
3/31/2000	0.09	0.06	0.68		2.36	1.38	0.00	0.000	0.000
4/30/2000	0.10	0.07	0.72		2.37	1.38	0.00	0.000	0.000
5/31/2000	0.10	0.07	0.74		2.37	1.38	0.00	0.000	0.000
6/30/2000	0.11	0.09	0.81		2.37	1.38	0.00	0.000	0.000
7/31/2000	0.10	0.09	0.91		2.38	1.39	0.00	0.000	0.000
8/31/2000	0.10	0.10	0.97		2.38	1.39	0.00	0.000	0.000
9/30/2000	0.08	0.09	1.13		2.38	1.39	0.00	0.000	0.000
10/31/2000	0.09	0.11	1.22		2.38	1.40	0.00	0.000	0.000
11/30/2000	0.07	0.10	1.32		2.39	1.40	0.00	0.000	0.000
12/31/2000	0.07	0.09	1.22		2.39	1.40	0.00	0.000	0.000
1/31/2001	0.07	0.10	1.35		2.39	1.41	0.00	0.000	0.000
2/28/2001	0.06	0.09	1.44		2.39	1.41	0.00	0.000	0.000
3/31/2001	0.06	0.09	1.40		2.39	1.41	0.00	0.000	0.000
4/30/2001	0.07	0.08	1.20		2.40	1.41	0.00	0.000	0.000
5/31/2001	0.07	0.08	1.14		2.40	1.42	0.00	0.000	0.000
6/30/2001	0.06	0.08	1.32		2.40	1.42	0.00	0.000	0.000
7/31/2001	0.07	0.11	1.43		2.40	1.42	0.00	0.000	0.000
8/31/2001	0.07	0.10	1.43		2.41	1.42	0.00	0.000	0.000
9/30/2001	0.07	0.10	1.41		2.41	1.43	0.00	0.000	0.000
10/31/2001	0.09	0.11	1.18		2.41	1.43	0.00	0.000	0.000
11/30/2001	0.08	0.11	1.42		2.41	1.43	0.00	0.000	0.000
12/31/2001	0.09	0.10	1.07		2.42	1.44	0.00	0.000	0.000
1/31/2002	0.09	0.11	1.17		2.42	1.44	0.00	0.000	0.000
2/28/2002	0.09	0.11	1.19		2.42	1.44	0.00	0.000	0.000
3/31/2002	0.08	0.09	1.16		2.42	1.45	0.00	0.000	0.000
4/30/2002	0.09	0.11	1.21		2.43	1.45	0.00	0.000	0.000
5/31/2002	0.10	0.12	1.23		2.43	1.45	0.00	0.000	0.000
6/30/2002	0.09	0.10	1.04		2.43	1.46	0.00	0.000	0.000
7/31/2002	0.10	0.10	1.00		2.44	1.46	0.00	0.000	0.000
8/31/2002	0.09	0.09	1.00		2.44	1.46	0.00	0.000	0.000
9/30/2002	0.09	0.09	1.08		2.44	1.47	0.00	0.000	0.000
10/31/2002	0.08	0.09	1.08		2.44	1.47	0.00	0.000	0.000
11/30/2002	0.03	0.10	3.00		2.44	1.47	0.00	0.000	0.000
12/31/2002	0.03	0.08	2.78		2.44	1.47	0.00	0.000	0.000
1/31/2003	0.03	0.09	3.00		2.45	1.48	0.00	0.000	0.000
2/28/2003	0.03	0.09	3.71		2.45	1.48	0.00	0.000	0.000
3/31/2003	0.03	0.08	3.00		2.45	1.48	0.00	0.000	0.000
4/30/2003	0.03	0.08	3.00		2.45	1.48	0.00	0.000	0.000

Date	Oil Rate (CD) m3/d	Water Rate (CD) m3/d	Water Oil Ratio m3/m3	Water Inj Rate (CD) m3/d	Cum Oil Prod Km3	Cum Water Prod Km3	Cum Water Inj Km3	VRR	Cum VRR
5/31/2003	0.03	0.09	3.11		2.45	1.49	0.00	0.000	0.000
6/30/2003	0.03	0.09	3.25		2.45	1.49	0.00	0.000	0.000
7/31/2003	0.03	0.09	3.11		2.45	1.49	0.00	0.000	0.000
8/31/2003	0.03	0.09	2.80		2.45	1.49	0.00	0.000	0.000
9/30/2003	0.03	0.09	3.50		2.45	1.50	0.00	0.000	0.000
10/31/2003	0.03	0.09	3.22		2.45	1.50	0.00	0.000	0.000
11/30/2003	0.03	0.09	3.00		2.45	1.50	0.00	0.000	0.000
12/31/2003	0.03	0.09	3.22		2.46	1.51	0.00	0.000	0.000
1/31/2004	0.03	0.08	2.60		2.46	1.51	0.00	0.000	0.000
2/29/2004	0.03	0.09	2.89		2.46	1.51	0.00	0.000	0.000
3/31/2004	0.03	0.09	2.70		2.46	1.51	0.00	0.000	0.000
4/30/2004	0.06	0.08	1.47		2.46	1.52	0.00	0.000	0.000
5/31/2004	0.05	0.08	1.41		2.46	1.52	0.00	0.000	0.000
6/30/2004	0.06	0.08	1.28		2.46	1.52	0.00	0.000	0.000
7/31/2004	0.06	0.08	1.33		2.47	1.52	0.00	0.000	0.000
8/31/2004	0.07	0.07	1.05		2.47	1.53	0.00	0.000	0.000
9/30/2004	0.05	0.06	1.13		2.47	1.53	0.00	0.000	0.000
10/31/2004	0.06	0.06	1.11		2.47	1.53	0.00	0.000	0.000
11/30/2004	0.07	0.09	1.24		2.47	1.53	0.00	0.000	0.000
12/31/2004	0.06	0.08	1.20		2.47	1.53	0.00	0.000	0.000
1/31/2005	0.06	0.08	1.26		2.48	1.54	0.00	0.000	0.000
2/28/2005	0.06	0.08	1.22		2.48	1.54	0.00	0.000	0.000
3/31/2005	0.07	0.08	1.14		2.48	1.54	0.00	0.000	0.000
4/30/2005	0.06	0.06	1.12		2.48	1.54	0.00	0.000	0.000
5/31/2005	0.07	0.08	1.14		2.48	1.55	0.00	0.000	0.000
6/30/2005	0.07	0.08	1.25		2.49	1.55	0.00	0.000	0.000
7/31/2005	0.06	0.08	1.30		2.49	1.55	0.00	0.000	0.000
8/31/2005	0.06	0.07	1.15		2.49	1.55	0.00	0.000	0.000
9/30/2005	0.07	0.08	1.25		2.49	1.56	0.00	0.000	0.000
10/31/2005	0.06	0.08	1.25		2.49	1.56	0.00	0.000	0.000
11/30/2005	0.07	0.09	1.30		2.50	1.56	0.00	0.000	0.000
12/31/2005	0.07	0.08	1.14		2.50	1.56	0.00	0.000	0.000
1/31/2006	0.07	0.08	1.14		2.50	1.57	0.00	0.000	0.000
2/28/2006	0.07	0.08	1.10		2.50	1.57	0.00	0.000	0.000
3/31/2006	0.07	0.08	1.14		2.50	1.57	0.00	0.000	0.000
4/30/2006	0.07	0.08	1.14		2.51	1.57	0.00	0.000	0.000
5/31/2006	0.07	0.08	1.09		2.51	1.57	0.00	0.000	0.000
6/30/2006	0.06	0.07	1.11		2.51	1.58	0.00	0.000	0.000
7/31/2006	0.06	0.08	1.20		2.51	1.58	0.00	0.000	0.000
8/31/2006	0.07	0.08	1.14		2.52	1.58	0.00	0.000	0.000
9/30/2006	0.06	0.07	1.17		2.52	1.58	0.00	0.000	0.000
10/31/2006	0.06	0.08	1.20		2.52	1.59	0.00	0.000	0.000
11/30/2006	0.07	0.08	1.20		2.52	1.59	0.00	0.000	0.000
12/31/2006	0.06	0.09	1.35		2.52	1.59	0.00	0.000	0.000
1/31/2007	0.04	0.05	1.42		2.52	1.59	0.00	0.000	0.000
2/28/2007	0.05	0.07	1.62		2.53	1.60	0.00	0.000	0.000

Date	Oil Rate (CD) m3/d	Water Rate (CD) m3/d	Water Oil Ratio m3/m3	Water Inj Rate (CD) m3/d	Cum Oil Prod Km3	Cum Water Prod Km3	Cum Water Inj Km3	VRR	Cum VRR
3/31/2007	0.13	0.10	0.78		2.53	1.60	0.00	0.000	0.000
4/30/2007	0.15	0.10	0.68		2.53	1.60	0.00	0.000	0.000
5/31/2007	0.14	0.10	0.68		2.54	1.60	0.00	0.000	0.000
6/30/2007	0.12	0.07	0.58		2.54	1.61	0.00	0.000	0.000
7/31/2007	0.12	0.07	0.62		2.55	1.61	0.00	0.000	0.000
8/31/2007	0.12	0.07	0.64		2.55	1.61	0.00	0.000	0.000
9/30/2007	0.11	0.07	0.67		2.55	1.61	0.00	0.000	0.000
10/31/2007	0.06	0.06	1.00		2.55	1.61	0.00	0.000	0.000
11/30/2007	0.06	0.06	1.12		2.56	1.62	0.00	0.000	0.000
12/31/2007	0.06	0.06	1.06		2.56	1.62	0.00	0.000	0.000
1/31/2008	0.06	0.06	1.06		2.56	1.62	0.00	0.000	0.000
2/29/2008	0.05	0.07	1.27		2.56	1.62	0.00	0.000	0.000
3/31/2008	0.05	0.07	1.57		2.56	1.62	0.00	0.000	0.000
4/30/2008	0.04	0.07	1.75		2.56	1.63	0.00	0.000	0.000
5/31/2008	0.04	0.07	2.00		2.56	1.63	0.00	0.000	0.000
6/30/2008	0.04	0.08	1.92		2.57	1.63	0.00	0.000	0.000
7/31/2008	0.04	0.08	1.92		2.57	1.63	0.00	0.000	0.000
8/31/2008	0.04	0.10	2.50		2.57	1.64	0.00	0.000	0.000
9/30/2008	0.04	0.10	2.73		2.57	1.64	0.00	0.000	0.000
10/31/2008	0.04	0.10	2.38		2.57	1.64	0.00	0.000	0.000
11/30/2008	0.04	0.08	2.08		2.57	1.65	0.00	0.000	0.000
12/31/2008	0.04	0.09	2.15		2.57	1.65	0.00	0.000	0.000
1/31/2009	0.04	0.10	2.38		2.57	1.65	0.00	0.000	0.000
2/28/2009	0.03	0.10	3.22		2.58	1.65	0.00	0.000	0.000
3/31/2009	0.05	0.10	2.00		2.58	1.66	0.00	0.000	0.000
4/30/2009	0.05	0.09	1.80		2.58	1.66	0.00	0.000	0.000
5/31/2009	0.05	0.09	1.75		2.58	1.66	0.00	0.000	0.000
6/30/2009	0.04	0.09	2.08		2.58	1.67	0.00	0.000	0.000
7/31/2009	0.05	0.07	1.47		2.58	1.67	0.00	0.000	0.000
8/31/2009	0.05	0.07	1.53		2.58	1.67	0.00	0.000	0.000
9/30/2009	0.05	0.07	1.47		2.59	1.67	0.00	0.000	0.000
10/31/2009	0.05	0.07	1.64		2.59	1.67	0.00	0.000	0.000
11/30/2009	0.04	0.08	2.00		2.59	1.68	0.00	0.000	0.000
12/31/2009	0.04	0.09	2.15		2.59	1.68	0.00	0.000	0.000
1/31/2010	0.04	0.09	2.15		2.59	1.68	0.00	0.000	0.000
2/28/2010	0.04	0.09	2.60		2.59	1.69	0.00	0.000	0.000
3/31/2010	0.03	0.09	2.80		2.59	1.69	0.00	0.000	0.000
4/30/2010	0.05	0.07	1.43		2.59	1.69	0.00	0.000	0.000
5/31/2010	0.06	0.09	1.50		2.60	1.69	0.00	0.000	0.000
6/30/2010	0.04	0.18	4.15		2.60	1.70	0.00	0.000	0.000
7/31/2010	0.05	0.07	1.38		2.60	1.70	0.00	0.000	0.000
8/31/2010	0.05	0.08	1.47		2.60	1.70	0.00	0.000	0.000
9/30/2010	0.06	0.08	1.33		2.60	1.71	0.00	0.000	0.000
10/31/2010	0.06	0.08	1.32		2.60	1.71	0.00	0.000	0.000
11/30/2010	0.06	0.08	1.26		2.61	1.71	0.00	0.000	0.000
12/31/2010	0.06	0.08	1.37		2.61	1.71	0.00	0.000	0.000

Date	Oil Rate (CD) m3/d	Water Rate (CD) m3/d	Water Oil Ratio m3/m3	Water Inj Rate (CD) m3/d	Cum Oil Prod Km3	Cum Water Prod Km3	Cum Water Inj Km3	VRR	Cum VRR
1/31/2011	0.05	0.08	1.47		2.61	1.72	0.00	0.000	0.000
2/28/2011	0.06	0.08	1.38		2.61	1.72	0.00	0.000	0.000
3/31/2011	0.04	0.05	1.33		2.61	1.72	0.00	0.000	0.000
4/30/2011	7.08	24.23	3.42		2.83	2.45	0.00	0.000	0.000
5/31/2011	6.61	21.40	3.24		3.03	3.11	0.00	0.000	0.000
6/30/2011	8.04	23.24	2.89		3.27	3.81	0.00	0.000	0.000
7/31/2011	12.16	30.95	2.54		3.65	4.77	0.00	0.000	0.000
8/31/2011	13.28	31.24	2.35		4.06	5.73	0.00	0.000	0.000
9/30/2011	12.36	31.56	2.55		4.43	6.68	0.00	0.000	0.000
10/31/2011	11.82	33.47	2.83		4.80	7.72	0.00	0.000	0.000
11/30/2011	11.70	17.58	1.50		5.15	8.25	0.00	0.000	0.000
12/31/2011	12.48	17.80	1.43		5.54	8.80	0.00	0.000	0.000
1/31/2012	12.09	17.28	1.43		5.91	9.33	0.00	0.000	0.000
2/29/2012	7.79	15.18	1.95		6.14	9.77	0.00	0.000	0.000
3/31/2012	6.43	15.98	2.49		6.34	10.27	0.00	0.000	0.000
4/30/2012	5.84	14.52	2.49		6.51	10.71	0.00	0.000	0.000
5/31/2012	5.21	13.81	2.65		6.67	11.13	0.00	0.000	0.000
6/30/2012	4.14	12.45	3.01		6.80	11.51	0.00	0.000	0.000
7/31/2012	3.52	11.07	3.15		6.91	11.85	0.00	0.000	0.000
8/31/2012	4.38	13.12	2.99		7.04	12.26	0.00	0.000	0.000
9/30/2012	2.89	11.44	3.96		7.13	12.60	0.00	0.000	0.000
10/31/2012	2.61	11.03	4.22		7.21	12.94	0.00	0.000	0.000
11/30/2012	2.27	11.25	4.96		7.28	13.28	0.00	0.000	0.000
12/31/2012	2.21	10.43	4.72		7.35	13.60	0.00	0.000	0.000
1/31/2013	1.98	9.81	4.94		7.41	13.91	0.00	0.000	0.000
2/28/2013	1.38	10.73	7.78		7.45	14.21	0.00	0.000	0.000
3/31/2013	4.57	19.38	4.24		7.59	14.81	0.00	0.000	0.000
4/30/2013	4.41	16.66	3.78		7.72	15.31	0.00	0.000	0.000
5/31/2013	3.25	12.62	3.88		7.82	15.70	0.00	0.000	0.000
6/30/2013	4.59	26.51	5.78		7.96	16.49	0.00	0.000	0.000
7/31/2013	7.41	31.29	4.22		8.19	17.46	0.00	0.000	0.000
8/31/2013	8.90	33.95	3.82		8.46	18.52	0.00	0.000	0.000
9/30/2013	5.29	22.03	4.17		8.62	19.18	0.00	0.000	0.000
10/31/2013	5.11	20.51	4.01		8.78	19.81	0.00	0.000	0.000
11/30/2013	4.86	17.10	3.52		8.93	20.33	0.00	0.000	0.000
12/31/2013	4.24	15.84	3.74		9.06	20.82	0.00	0.000	0.000
1/31/2014	1.51	11.06	7.33		9.10	21.16	0.00	0.000	0.000
2/28/2014	2.32	14.68	6.33		9.17	21.57	0.00	0.000	0.000
3/31/2014	3.93	16.59	4.22		9.29	22.09	0.00	0.000	0.000
4/30/2014	4.24	17.21	4.06		9.42	22.60	0.00	0.000	0.000
5/31/2014	4.21	15.55	3.69		9.55	23.08	0.00	0.000	0.000
6/30/2014	3.35	13.94	4.16		9.65	23.50	0.00	0.000	0.000
7/31/2014	3.18	13.34	4.20		9.75	23.92	0.00	0.000	0.000
8/31/2014	2.71	11.58	4.27		9.83	24.27	0.00	0.000	0.000
9/30/2014	2.40	20.85	8.70		9.90	24.90	0.00	0.000	0.000
10/31/2014	3.07	26.78	8.72		10.00	25.73	0.00	0.000	0.000

Date	Oil Rate (CD) m3/d	Water Rate (CD) m3/d	Water Oil Ratio m3/m3	Water Inj Rate (CD) m3/d	Cum Oil Prod Km3	Cum Water Prod Km3	Cum Water Inj Km3	VRR	Cum VRR
11/30/2014	4.75	34.39	7.25		10.14	26.76	0.00	0.000	0.000
12/31/2014	2.11	11.03	5.24		10.21	27.10	0.00	0.000	0.000
1/31/2015	2.26	10.96	4.84		10.28	27.44	0.00	0.000	0.000
2/28/2015	4.05	10.28	2.54		10.39	27.73	0.00	0.000	0.000
3/31/2015	3.32	10.34	3.11	5.16	10.49	28.05	0.16	0.372	0.004
4/30/2015	3.11	10.08	3.25	34.60	10.59	28.35	1.20	2.582	0.030
5/31/2015	2.85	10.50	3.69	39.87	10.67	28.68	2.43	2.943	0.061
6/30/2015	1.81	11.00	6.07	20.87	10.73	29.01	3.06	1.613	0.076
7/31/2015	2.38	10.96	4.60	20.19	10.80	29.35	3.69	1.495	0.090
8/31/2015	1.99	9.91	4.99	20.68	10.86	29.66	4.33	1.719	0.105
9/30/2015	1.94	8.96	4.63	20.07	10.92	29.93	4.93	1.820	0.118
10/31/2015	1.95	8.97	4.61	18.00	10.98	30.20	5.49	1.628	0.131
11/30/2015	2.32	11.14	4.81	18.57	11.05	30.54	6.04	1.363	0.143
12/31/2015	2.13	9.42	4.43	17.74	11.12	30.83	6.59	1.518	0.154



Date	Oil Rate (CD) m3/d	Water Rate (CD) m3/d	Water Oil Ratio m3/m3	Water Inj Rate (CD) m3/d	Cum Oil Prod Km3	Cum Water Prod Km3	Cum Water Inj Km3	VRR	Cum VRR
11/30/1999	0.38	0.03	0.08		0.01	0.00	0.00	0.000	0.000
12/31/1999	2.01	0.68	0.34		0.07	0.02	0.00	0.000	0.000
1/31/2000	2.03	1.00	0.49		0.14	0.05	0.00	0.000	0.000
2/29/2000	2.00	1.03	0.51		0.19	0.08	0.00	0.000	0.000
3/31/2000	1.26	0.53	0.42		0.23	0.10	0.00	0.000	0.000
4/30/2000	0.75	0.33	0.45		0.26	0.11	0.00	0.000	0.000
5/31/2000	0.84	0.14	0.17		0.28	0.11	0.00	0.000	0.000
6/30/2000	0.80	0.15	0.19		0.31	0.12	0.00	0.000	0.000
7/31/2000	0.81	0.17	0.22		0.33	0.12	0.00	0.000	0.000
8/31/2000	0.75	0.17	0.23		0.35	0.13	0.00	0.000	0.000
9/30/2000	0.62	0.15	0.25		0.37	0.13	0.00	0.000	0.000
10/31/2000	0.68	0.19	0.27		0.39	0.14	0.00	0.000	0.000
11/30/2000	0.61	0.18	0.30		0.41	0.15	0.00	0.000	0.000
12/31/2000	0.63	0.18	0.28		0.43	0.15	0.00	0.000	0.000
1/31/2001	0.61	0.19	0.31		0.45	0.16	0.00	0.000	0.000
2/28/2001	0.54	0.17	0.32		0.47	0.16	0.00	0.000	0.000
3/31/2001	0.52	0.17	0.33		0.48	0.17	0.00	0.000	0.000
4/30/2001	0.51	0.16	0.31		0.50	0.17	0.00	0.000	0.000
5/31/2001	0.51	0.16	0.31		0.51	0.18	0.00	0.000	0.000
6/30/2001	0.51	0.16	0.31		0.53	0.18	0.00	0.000	0.000
7/31/2001	0.38	0.14	0.36		0.54	0.19	0.00	0.000	0.000
8/31/2001	0.32	0.10	0.30		0.55	0.19	0.00	0.000	0.000
9/30/2001	0.31	0.10	0.33		0.56	0.19	0.00	0.000	0.000
10/31/2001	0.35	0.10	0.29		0.57	0.19	0.00	0.000	0.000
11/30/2001	0.34	0.09	0.25		0.58	0.20	0.00	0.000	0.000
12/31/2001	0.40	0.09	0.23		0.59	0.20	0.00	0.000	0.000
1/31/2002	0.39	0.10	0.25		0.61	0.20	0.00	0.000	0.000
2/28/2002	0.38	0.10	0.27		0.62	0.21	0.00	0.000	0.000
3/31/2002	0.38	0.10	0.26		0.63	0.21	0.00	0.000	0.000
4/30/2002	0.36	0.10	0.28		0.64	0.21	0.00	0.000	0.000
5/31/2002	0.32	0.09	0.27		0.65	0.21	0.00	0.000	0.000
6/30/2002	0.34	0.08	0.23		0.66	0.22	0.00	0.000	0.000
7/31/2002	0.34	0.08	0.23		0.67	0.22	0.00	0.000	0.000
8/31/2002	0.28	0.08	0.28		0.68	0.22	0.00	0.000	0.000
9/30/2002	0.28	0.09	0.31		0.69	0.22	0.00	0.000	0.000
10/31/2002	0.29	0.11	0.39		0.70	0.23	0.00	0.000	0.000
11/30/2002	0.16	0.11	0.72		0.70	0.23	0.00	0.000	0.000
12/31/2002	0.13	0.13	1.00		0.70	0.24	0.00	0.000	0.000
1/31/2003	0.14	0.14	1.02		0.71	0.24	0.00	0.000	0.000
2/28/2003	0.12	0.11	0.91		0.71	0.24	0.00	0.000	0.000
3/31/2003	0.15	0.13	0.85		0.72	0.25	0.00	0.000	0.000
4/30/2003	0.15	0.13	0.86		0.72	0.25	0.00	0.000	0.000
5/31/2003	0.03	0.03	1.00		0.72	0.25	0.00	0.000	0.000
6/30/2003	0.14	0.11	0.83		0.73	0.25	0.00	0.000	0.000
7/31/2003	0.14	0.13	0.89		0.73	0.26	0.00	0.000	0.000
8/31/2003	0.15	0.13	0.91		0.74	0.26	0.00	0.000	0.000

Date	Oil Rate (CD) m3/d	Water Rate (CD) m3/d	Water Oil Ratio m3/m3	Water Inj Rate (CD) m3/d	Cum Oil Prod Km3	Cum Water Prod Km3	Cum Water Inj Km3	VRR	Cum VRR
9/30/2003	0.16	0.13	0.83		0.74	0.27	0.00	0.000	0.000
10/31/2003	0.15	0.12	0.81		0.74	0.27	0.00	0.000	0.000
11/30/2003	0.14	0.13	0.93		0.75	0.27	0.00	0.000	0.000
12/31/2003	0.11	0.10	0.91		0.75	0.28	0.00	0.000	0.000
1/31/2004	0.11	0.11	0.97		0.76	0.28	0.00	0.000	0.000
2/29/2004	0.11	0.11	1.00		0.76	0.28	0.00	0.000	0.000
3/31/2004	0.11	0.11	1.00		0.76	0.29	0.00	0.000	0.000
4/30/2004	0.09	0.11	1.27		0.77	0.29	0.00	0.000	0.000
5/31/2004	0.08	0.10	1.20		0.77	0.29	0.00	0.000	0.000
6/30/2004	0.09	0.10	1.04		0.77	0.30	0.00	0.000	0.000
7/31/2004	0.09	0.09	1.07		0.77	0.30	0.00	0.000	0.000
8/31/2004	0.08	0.11	1.31		0.78	0.30	0.00	0.000	0.000
9/30/2004	0.07	0.13	1.95		0.78	0.31	0.00	0.000	0.000
10/31/2004	0.07	0.13	1.95		0.78	0.31	0.00	0.000	0.000
11/30/2004	0.05	0.10	2.07		0.78	0.31	0.00	0.000	0.000
12/31/2004	0.09	0.16	1.89		0.78	0.32	0.00	0.000	0.000
1/31/2005	0.09	0.11	1.26		0.79	0.32	0.00	0.000	0.000
2/28/2005	0.09	0.10	1.21		0.79	0.33	0.00	0.000	0.000
3/31/2005	0.06	0.12	1.89		0.79	0.33	0.00	0.000	0.000
4/30/2005	0.06	0.11	2.00		0.79	0.33	0.00	0.000	0.000
5/31/2005	0.06	0.12	2.00		0.79	0.34	0.00	0.000	0.000
6/30/2005	0.06	0.12	2.18		0.80	0.34	0.00	0.000	0.000
7/31/2005	0.05	0.12	2.18		0.80	0.34	0.00	0.000	0.000
8/31/2005	0.05	0.10	2.07		0.80	0.35	0.00	0.000	0.000
9/30/2005	0.05	0.10	2.00		0.80	0.35	0.00	0.000	0.000
10/31/2005	0.04	0.09	2.33		0.80	0.35	0.00	0.000	0.000
11/30/2005	0.04	0.08	2.00		0.80	0.35	0.00	0.000	0.000
12/31/2005	0.04	0.08	1.85		0.80	0.36	0.00	0.000	0.000
1/31/2006	0.04	0.08	2.00		0.81	0.36	0.00	0.000	0.000
2/28/2006	0.04	0.08	2.09		0.81	0.36	0.00	0.000	0.000
4/30/2006	0.00	0.09			0.81	0.36	0.00	0.000	0.000
5/31/2006	0.00	0.09			0.81	0.37	0.00	0.000	0.000
10/31/2006	0.00	0.07			0.81	0.37	0.00	0.000	0.000
11/30/2006	0.00	0.18			0.81	0.37	0.00	0.000	0.000
12/31/2006	0.00	0.12			0.81	0.38	0.00	0.000	0.000
1/31/2007	0.00	0.11			0.81	0.38	0.00	0.000	0.000
2/28/2007	0.00	0.00			0.81	0.38	0.00		0.000
3/31/2007	0.00	0.00			0.81	0.38	0.00		0.000
4/30/2007	0.03	0.11	3.67		0.81	0.39	0.00	0.000	0.000
5/31/2007	0.03	0.14	4.20		0.81	0.39	0.00	0.000	0.000
6/30/2007	0.04	0.17	3.92		0.81	0.39	0.00	0.000	0.000
7/31/2007	0.04	0.18	4.23		0.81	0.40	0.00	0.000	0.000
8/31/2007	0.04	0.18	4.58		0.81	0.41	0.00	0.000	0.000
9/30/2007	0.04	0.17	4.25		0.81	0.41	0.00	0.000	0.000
10/31/2007	0.04	0.14	3.58		0.81	0.42	0.00	0.000	0.000
11/30/2007	0.04	0.14	3.58		0.82	0.42	0.00	0.000	0.000

Date	Oil Rate (CD) m3/d	Water Rate (CD) m3/d	Water Oil Ratio m3/m3	Water Inj Rate (CD) m3/d	Cum Oil Prod Km3	Cum Water Prod Km3	Cum Water Inj Km3	VRR	Cum VRR
12/31/2007	0.04	0.13	3.15		0.82	0.42	0.00	0.000	0.000
1/31/2008	0.04	0.12	3.08		0.82	0.43	0.00	0.000	0.000
2/29/2008	0.04	0.12	2.92		0.82	0.43	0.00	0.000	0.000
3/31/2008	0.04	0.12	3.08		0.82	0.43	0.00	0.000	0.000
4/30/2008	0.04	0.11	3.00		0.82	0.44	0.00	0.000	0.000
5/31/2008	0.04	0.11	3.00		0.82	0.44	0.00	0.000	0.000
6/30/2008	0.03	0.16	5.44		0.82	0.45	0.00	0.000	0.000
7/31/2008	0.03	0.12	3.70		0.82	0.45	0.00	0.000	0.000
8/31/2008	0.03	0.13	4.33		0.83	0.45	0.00	0.000	0.000
9/30/2008	0.03	0.12	4.00		0.83	0.46	0.00	0.000	0.000
10/31/2008	0.03	0.12	3.80		0.83	0.46	0.00	0.000	0.000
11/30/2008	0.03	0.11	3.40		0.83	0.46	0.00	0.000	0.000
12/31/2008	0.03	0.12	3.60		0.83	0.47	0.00	0.000	0.000
1/31/2009	0.03	0.12	3.70		0.83	0.47	0.00	0.000	0.000
2/28/2009	0.03	0.12	4.13		0.83	0.47	0.00	0.000	0.000
3/31/2009	0.04	0.11	2.62		0.83	0.48	0.00	0.000	0.000
4/30/2009	0.04	0.11	2.75		0.83	0.48	0.00	0.000	0.000
5/31/2009	0.04	0.11	2.62		0.84	0.48	0.00	0.000	0.000
6/30/2009	0.04	0.11	3.00		0.84	0.49	0.00	0.000	0.000
7/31/2009	0.04	0.13	3.33		0.84	0.49	0.00	0.000	0.000
8/31/2009	0.04	0.14	3.23		0.84	0.50	0.00	0.000	0.000
9/30/2009	0.04	0.14	3.42		0.84	0.50	0.00	0.000	0.000
10/31/2009	0.05	0.14	3.00		0.84	0.50	0.00	0.000	0.000
11/30/2009	0.05	0.13	2.38		0.84	0.51	0.00	0.000	0.000
12/31/2009	0.05	0.10	2.14		0.84	0.51	0.00	0.000	0.000
1/31/2010	0.04	0.09	2.08		0.85	0.51	0.00	0.000	0.000
2/28/2010	0.05	0.10	2.07		0.85	0.52	0.00	0.000	0.000
3/31/2010	0.02	0.09	4.67		0.85	0.52	0.00	0.000	0.000
4/30/2010	0.02	0.10	5.17		0.85	0.52	0.00	0.000	0.000
5/31/2010	0.02	0.11	5.67		0.85	0.53	0.00	0.000	0.000
6/30/2010	0.01	0.18	13.75		0.85	0.53	0.00	0.000	0.000
7/31/2010	0.01	0.12	12.00		0.85	0.54	0.00	0.000	0.000
8/31/2010	0.01	0.13	13.67		0.85	0.54	0.00	0.000	0.000
9/30/2010	0.01	0.14	10.25		0.85	0.54	0.00	0.000	0.000
10/31/2010	0.02	0.13	6.67		0.85	0.55	0.00	0.000	0.000
11/30/2010	0.02	0.13	6.50		0.85	0.55	0.00	0.000	0.000
12/31/2010	0.02	0.13	6.83		0.85	0.56	0.00	0.000	0.000
1/31/2011	0.02	0.13	6.67		0.85	0.56	0.00	0.000	0.000
2/28/2011	0.02	0.13	7.40		0.85	0.56	0.00	0.000	0.000
3/31/2011	0.03	0.18	5.50		0.85	0.57	0.00	0.000	0.000
4/30/2011	0.03	0.11	3.78		0.86	0.57	0.00	0.000	0.000
5/31/2011	0.03	0.12	3.60		0.86	0.58	0.00	0.000	0.000
6/30/2011	0.03	0.12	4.00		0.86	0.58	0.00	0.000	0.000
7/31/2011	0.03	0.11	3.89		0.86	0.58	0.00	0.000	0.000
8/31/2011	0.96	1.27	1.33		0.89	0.62	0.00	0.000	0.000
9/30/2011	0.03	0.86	28.67		0.89	0.65	0.00	0.000	0.000

Date	Oil Rate (CD) m3/d	Water Rate (CD) m3/d	Water Oil Ratio m3/m3	Water Inj Rate (CD) m3/d	Cum Oil Prod Km3	Cum Water Prod Km3	Cum Water Inj Km3	VRR	Cum VRR
10/31/2011	17.27	26.72	1.55		1.42	1.48	0.00	0.000	0.000
11/30/2011	16.72	26.25	1.57		1.93	2.26	0.00	0.000	0.000
12/31/2011	13.57	24.13	1.78		2.35	3.01	0.00	0.000	0.000
1/31/2012	13.16	22.90	1.74		2.75	3.72	0.00	0.000	0.000
2/29/2012	13.15	23.06	1.75		3.14	4.39	0.00	0.000	0.000
3/31/2012	11.98	19.45	1.62		3.51	4.99	0.00	0.000	0.000
4/30/2012	10.53	17.16	1.63		3.82	5.51	0.00	0.000	0.000
5/31/2012	8.20	14.75	1.80		4.08	5.97	0.00	0.000	0.000
6/30/2012	5.26	12.49	2.37		4.24	6.34	0.00	0.000	0.000
7/31/2012	4.27	10.40	2.44		4.37	6.66	0.00	0.000	0.000
8/31/2012	5.40	12.23	2.26		4.53	7.04	0.00	0.000	0.000
9/30/2012	5.05	10.19	2.02		4.69	7.35	0.00	0.000	0.000
10/31/2012	4.40	8.45	1.92		4.82	7.61	0.00	0.000	0.000
11/30/2012	4.45	8.30	1.86		4.96	7.86	0.00	0.000	0.000
12/31/2012	4.08	7.73	1.90		5.08	8.10	0.00	0.000	0.000
1/31/2013	4.09	7.36	1.80		5.21	8.33	0.00	0.000	0.000
2/28/2013	3.59	11.54	3.22		5.31	8.65	0.00	0.000	0.000
3/31/2013	5.21	17.94	3.44		5.47	9.21	0.00	0.000	0.000
4/30/2013	5.88	18.95	3.23		5.65	9.77	0.00	0.000	0.000
5/31/2013	4.88	16.85	3.45		5.80	10.30	0.00	0.000	0.000
6/30/2013	4.99	16.21	3.25		5.95	10.78	0.00	0.000	0.000
7/31/2013	5.11	16.19	3.17		6.11	11.28	0.00	0.000	0.000
8/31/2013	5.78	12.03	2.08		6.29	11.66	0.00	0.000	0.000
9/30/2013	5.05	6.60	1.31		6.44	11.86	0.00	0.000	0.000
10/31/2013	4.91	6.57	1.34		6.59	12.06	0.00	0.000	0.000
11/30/2013	4.44	5.61	1.26		6.72	12.23	0.00	0.000	0.000
12/31/2013	3.74	4.39	1.17		6.84	12.36	0.00	0.000	0.000
1/31/2014	3.70	4.33	1.17		6.95	12.50	0.00	0.000	0.000
2/28/2014	3.66	4.17	1.14		7.06	12.61	0.00	0.000	0.000
3/31/2014	3.49	4.28	1.23		7.17	12.75	0.00	0.000	0.000
4/30/2014	3.15	3.96	1.26		7.26	12.87	0.00	0.000	0.000
5/31/2014	1.86	3.62	1.95		7.32	12.98	0.00	0.000	0.000
6/30/2014	1.66	3.31	1.99		7.37	13.08	0.00	0.000	0.000
7/31/2014	1.65	3.26	1.97		7.42	13.18	0.00	0.000	0.000
8/31/2014	1.78	4.66	2.62		7.47	13.32	0.00	0.000	0.000
9/30/2014	1.95	7.27	3.72		7.53	13.54	0.00	0.000	0.000
10/31/2014	2.57	7.54	2.93		7.61	13.78	0.00	0.000	0.000
11/30/2014	2.48	7.44	3.00		7.69	14.00	0.00	0.000	0.000
12/31/2014	2.43	7.10	2.92		7.76	14.22	0.00	0.000	0.000
1/31/2015	1.90	5.75	3.02		7.82	14.40	0.00	0.000	0.000
2/28/2015	1.39	4.28	3.09		7.86	14.52	0.00	0.000	0.000
3/31/2015	1.37	4.52	3.30		7.90	14.66	0.00	0.000	0.000
4/30/2015	1.29	4.24	3.27		7.94	14.78	0.00	0.000	0.000
5/31/2015	1.09	4.85	4.46		7.97	14.93	0.00	0.000	0.000
6/30/2015	0.98	5.49	5.58		8.00	15.10	0.00	0.000	0.000
7/31/2015	1.29	5.60	4.35		8.04	15.27	0.00	0.000	0.000

Date	Oil Rate (CD) m3/d	Water Rate (CD) m3/d	Water Oil Ratio m3/m3	Water Inj Rate (CD) m3/d	Cum Oil Prod Km3	Cum Water Prod Km3	Cum Water Inj Km3	VRR	Cum VRR
8/31/2015	1.05	4.84	4.62		8.08	15.42	0.00	0.000	0.000
9/30/2015	0.97	4.49	4.64		8.11	15.56	0.00	0.000	0.000
10/31/2015	1.12	5.75	5.11		8.14	15.74	0.00	0.000	0.000
11/30/2015	1.32	6.32	4.77		8.18	15.92	0.00	0.000	0.000
12/31/2015	1.17	4.35	3.71		8.22	16.06	0.00	0.000	0.000