

# TORC OIL & GAS LTD.

EAST MANSON UNIT #6

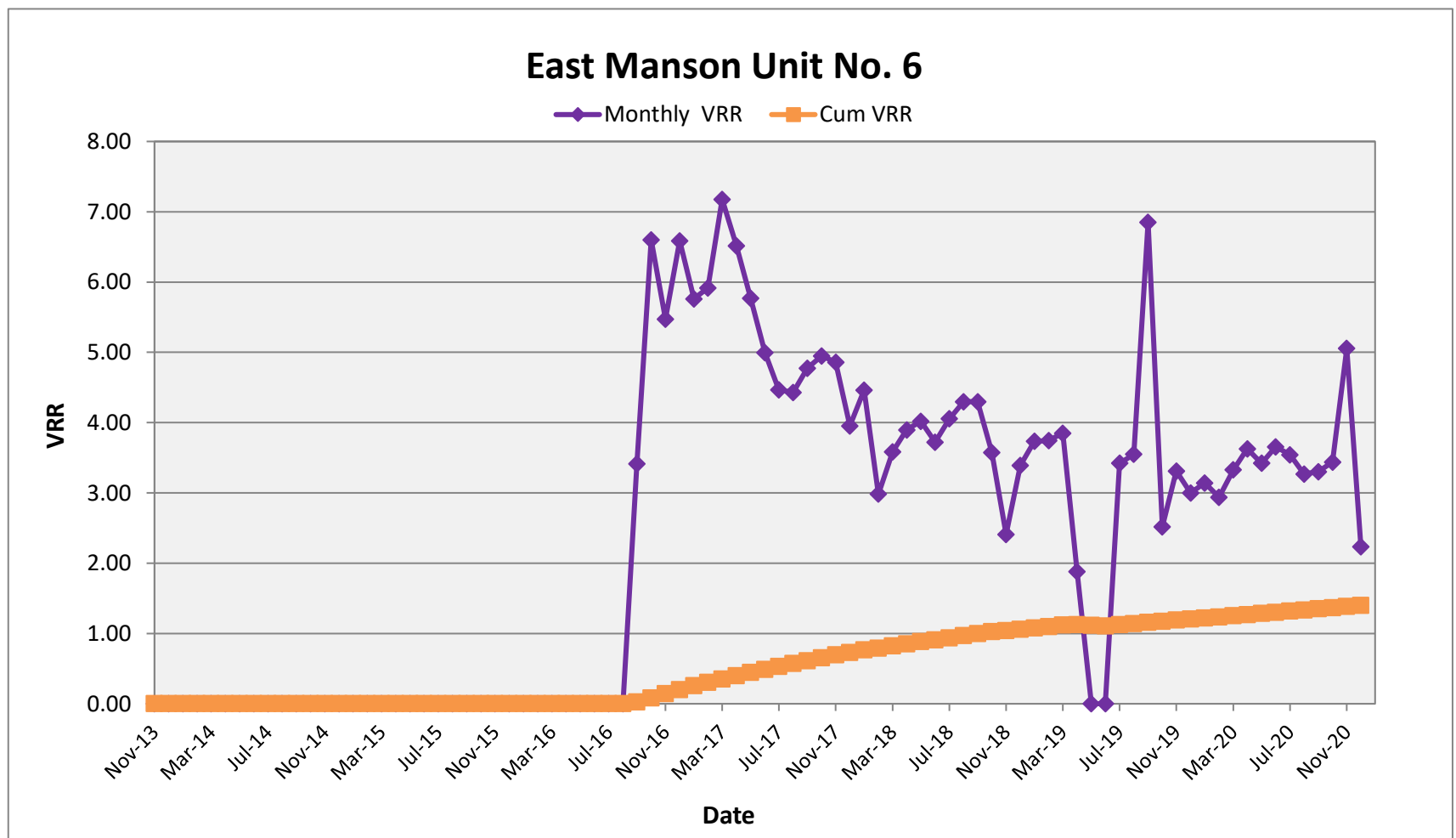
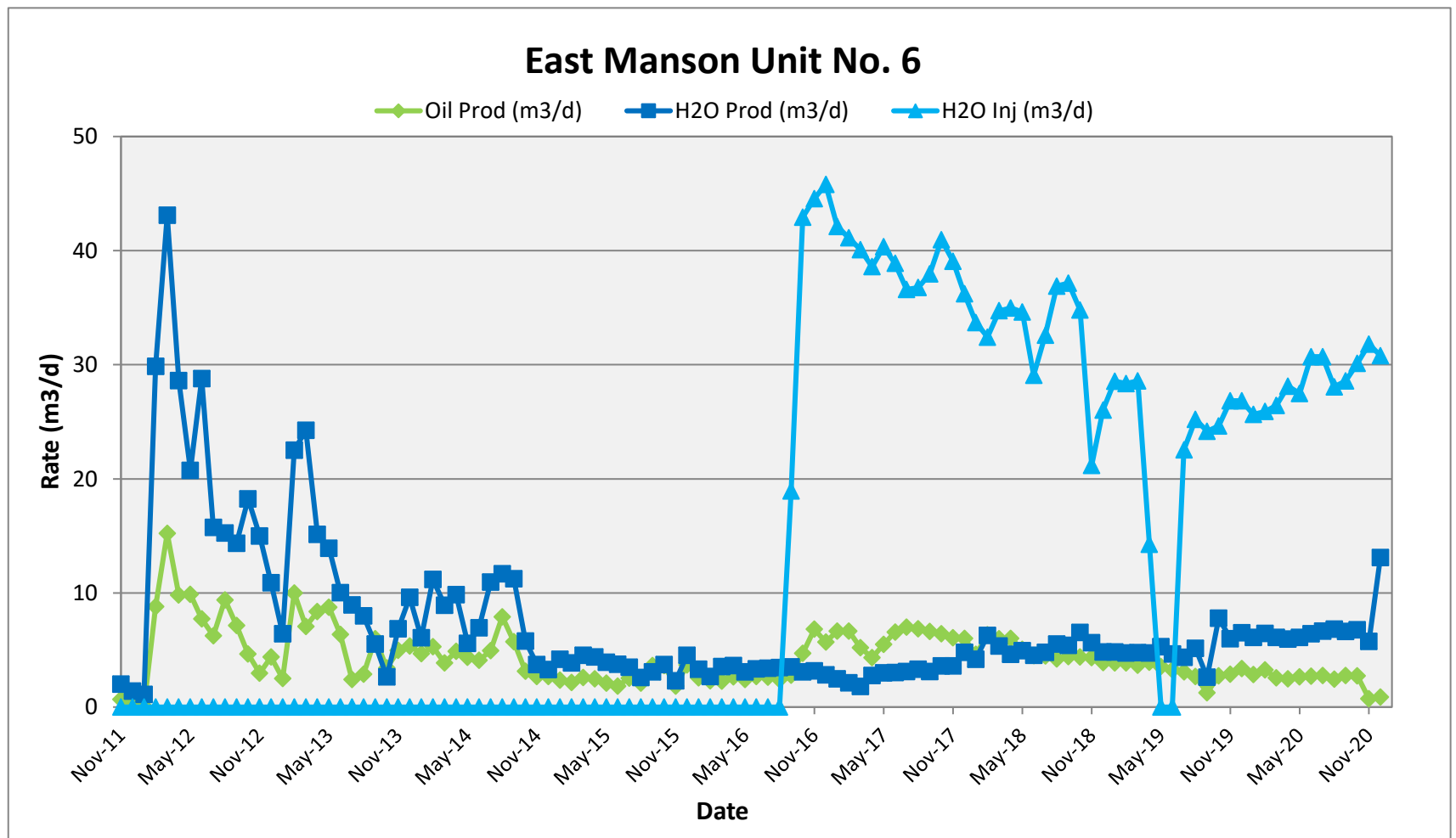
ENHANCED OIL RECOVERY (EOR) ANNUAL REPORT

**Discussion:**

East Manson Unit #6 (EMU #6) delivered another year of steady and reliable flood performance throughout 2020. In its fourth year since inception, this flood continued to show that injection conformance has been effective in arresting production decline and providing sufficient pressure maintenance to the reservoir.

In 2020, TORC maintained the revised injection targets from 2019 and oil rates remained relatively steady.

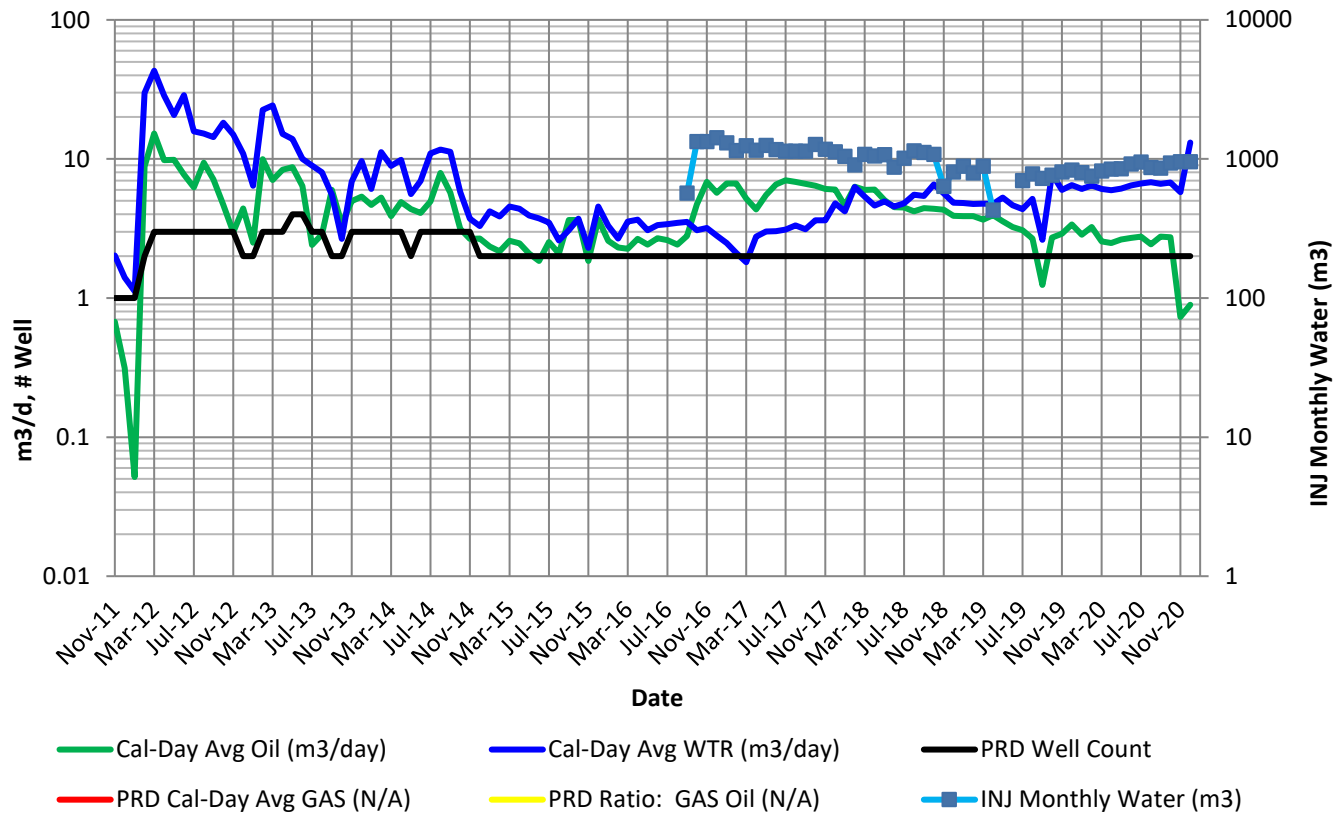
	Date	Oil Prod (m3/d)	Gas Prod (e3m3/d)	H2O Prod (m3/d)	H2O Inj (m3/d)	Monthly VRR	Cum VRR	Cum PRD Oil (m3)	Cum PRD Gas (e3m3)	Cum PRD Water (m3)	Cum INJ Water (m3)
EMU No.6	Dec-2020	1	-	13	31	2.24	1.397	14,577	-	24,361	48,825



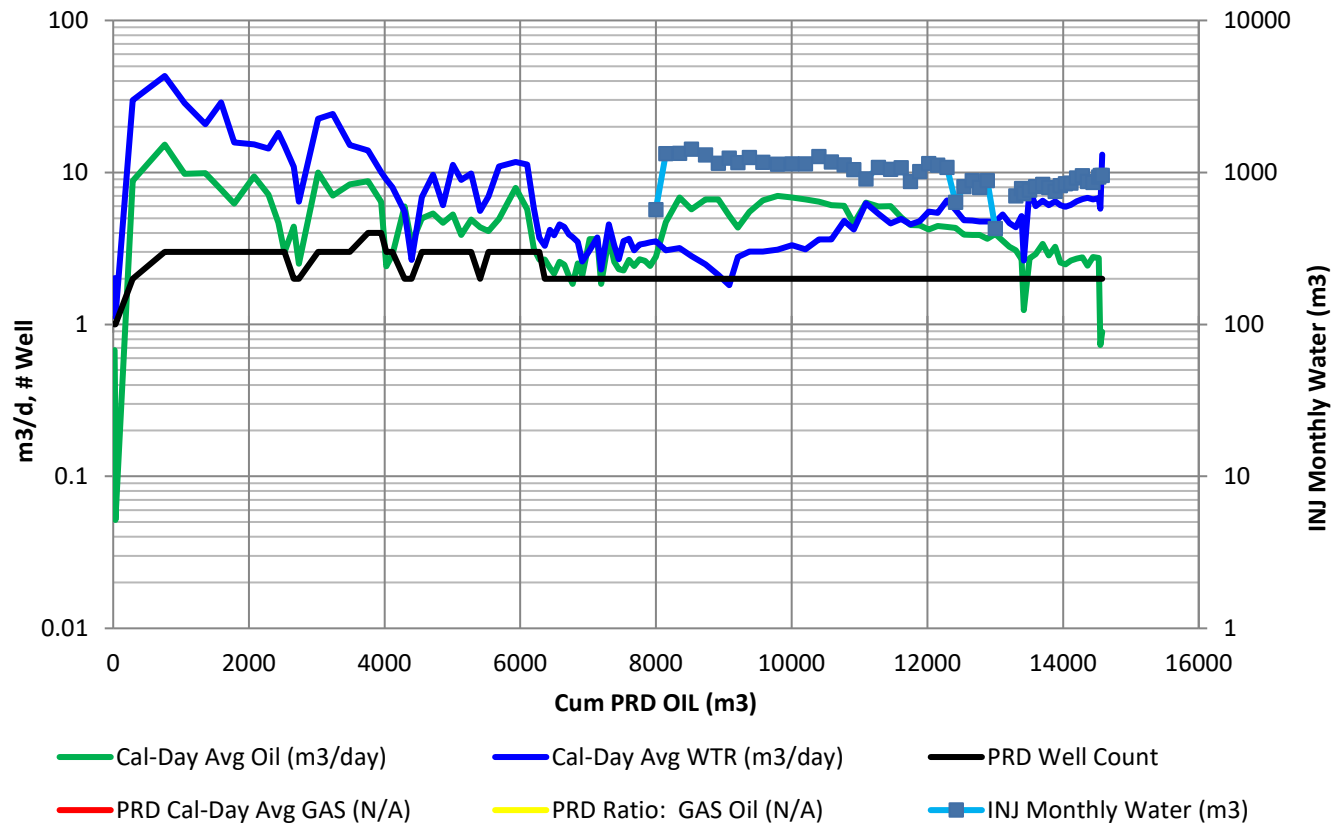
East Manson Unit No. 6 (Section 28-013-28W1) - VRR Table																										
Month	Days	Monthly Oil Prod (bbl)	Monthly Oil Prod (m3)	Monthly Gas Prod (E3m3)	Monthly H2O Prod (bbl)	Monthly H2O Prod (m3)	Monthly H2O Inj (bbl)	Monthly H2O Inj (m3)	Oil Prod (m3/d)	Gas Prod (E3m3/d)	H2O Prod (m3/d)	H2O Inj (m3/d)	Cum Oil (bbl)	Cum Oil (m3)	Cum Gas (E3m3)	Cum H2O (m3)	Cum H2O Inj (m3)	Prod Well Count	GOR (m3/m3)	H2OCut %	Voidage (rm3/d)	Monthly VRR	Cum GOR (m3/m3)	H2OCut %	Cum Void (rm3)	Cum VRR
Nov-11	30	128	20.3	0	381	60.5	0	0	1	0	2	0	128	20	0	61	0	1	0	74.9%	3	0.00	0.0	74.9%	75.7	0.000
Dec-11	31	61	9.7	0	274	43.5	0	0	0	0	1	0	189	30	0	104	0	1	0	81.8%	2	0.00	0.0	77.6%	126.5	0.000
Jan-12	31	10	1.6	0	218	34.7	0	0	0	0	1	0	199	32	0	139	0	1	0	95.6%	1	0.00	0.0	81.4%	162.5	0.000
Feb-12	29	1,607	255.4	0	5,445	865.7	0	0	9	0	30	0	1,805	287	0	1004	0	2	0	77.2%	36	0.00	0.0	77.8%	1219.1	0.000
Mar-12	31	2,971	472.3	0	8,405	1,336.2	0	0	15	0	43	0	4,776	759	0	2341	0	3	0	73.9%	54	0.00	0.0	75.5%	2906.9	0.000
Apr-12	30	1,851	294.3	0	5,399	858.4	0	0	10	0	29	0	6,628	1054	0	3199	0	3	0	74.5%	36	0.00	0.0	75.2%	3984.5	0.000
May-12	31	1,924	305.9	0	4,046	643.3	0	0	10	0	21	0	8,552	1360	0	3842	0	3	0	67.8%	28	0.00	0.0	73.9%	4854.4	0.000
Jun-12	30	1,458	231.8	0	5,433	863.8	0	0	8	0	29	0	10,010	1591	0	4706	0	3	0	78.8%	35	0.00	0.0	74.7%	5891.8	0.000
Jul-12	31	1,217	193.5	0	3,073	488.5	0	0	6	0	16	0	11,227	1785	0	5195	0	3	0	71.6%	20	0.00	0.0	74.4%	6524.1	0.000
Aug-12	31	1,833	291.4	0	2,975	472.9	0	0	9	0	15	0	13,060	2076	0	5668	0	3	0	61.9%	22	0.00	0.0	73.2%	7212.2	0.000
Sep-12	30	1,347	214.2	0	2,708	430.6	0	0	7	0	14	0	14,408	2291	0	6098	0	3	0	66.8%	20	0.00	0.0	72.7%	7801.3	0.000
Oct-12	31	909	144.6	0	3,558	565.7	0	0	5	0	18	0	15,317	2435	0	6664	0	3	0	79.6%	22	0.00	0.0	73.2%	8475.4	0.000
Nov-12	30	562	89.3	0	2,830	449.9	0	0	3	0	15	0	15,879	2524	0	7114	0	3	0	83.4%	17	0.00	0.0	73.8%	8992.8	0.000
Dec-12	31	857	136.3	0	2,126	338.0	0	0	4	0	11	0	16,736	2661	0	7452	0	2	0	71.3%	14	0.00	0.0	73.7%	9431.9	0.000
Jan-13	31	488	77.6	0	1,254	199.3	0	0	3	0	6	0	17,224	2738	0	7651	0	2	0	72.0%	8	0.00	0.0	73.6%	9688.9	0.000
Feb-13	28	1,758	279.5	0	3,963	630.1	0	0	10	0	23	0	18,982	3018	0	8281	0	3	0	69.3%	30	0.00	0.0	73.3%	10526.3	0.000
Mar-13	31	1,375	218.6	0	4,730	752.0	0	0	7	0	24	0	20,357	3236	0	9033	0	3	0	77.5%	30	0.00	0.0	73.6%	11441.7	0.000
Apr-13	30	1,577	250.7	0	2,854	453.8	0	0	8	0	15	0	21,934	3487	0	9487	0	3	0	64.4%	21	0.00	0.0	73.1%	12080.9	0.000
May-13	31	1,705	271.0	0	2,715	431.6	0	0	9	0	14	0	23,639	3758	0	9919	0	4	0	61.4%	20	0.00	0.0	72.5%	12712.5	0.000
Jun-13	30	1,203	191.3	0	1,893	300.9	0	0	6	0	10	0	24,842	3950	0	10219	0	4	0	61.1%	15	0.00	0.0	72.1%	13154.6	0.000
Jul-13	31	471	74.8	0	1,746	277.5	0	0	2	0	9	0	25,313	4024	0	10497	0	3	0	78.8%	11	0.00	0.0	72.3%	13488.2	0.000
Aug-13	31	559	88.9	0	1,559	247.9	0	0	3	0	8	0	25,873	4113	0	10745	0	3	0	73.6%	10	0.00	0.0	72.3%	13802.3	0.000
Sep-13	30	1,128	179.4	0	1,041	165.6	0	0	6	0	6	0	27,001	4293	0	10910	0	2	0	48.0%	10	0.00	0.0	71.8%	14099.6	0.000
Oct-13	31	668	106.1	0	519	82.4	0	0	3	0	3	0	27,668	4399	0	10993	0	2	0	43.7%	5	0.00	0.0	71.4%	14260.0	0.000
Nov-13	30	940	149.4	0	1,297	206.2	0	0	5	0	7	0	28,608	4548	0	11199	0	3	0	58.0%	11	0.00	0.0	71.1%	14576.3	0.000
Dec-13	31	1,046	166.3	0	1,878	298.5	0	0	5	0	10	0	29,654	4714	0	11498	0	3	0	64.2%	14	0.00	0.0	70.9%	14997.7	0.000
Jan-14	31	911	144.8	0	1,186	188.6	0	0	5	0	6	0	30,564	4859	0	11686	0	3	0	56.6%	10	0.00	0.0	70.6%	15292.9	0.000
Feb-14	28	931	148.0	0	1,971	313.3	0	0	5	0	11	0	31,495	5007	0	12000	0	3	0	67.9%	15	0.00	0.0	70.6%	15715.9	0.000
Mar-14	31	756	120.3	0	1,743	277.0	0	0	4	0	9	0	32,252	5127	0	12277	0	3	0	69.7%	12	0.00	0.0	70.5%	16082.1	0.000
Apr-14	30	924	146.9	0	1,858	295.3	0	0	5	0	10	0	33,175	5274	0	12572	0	3	0	66.8%	13	0.00	0.0	70.4%	16486.1	0.000
May-14	31	850	135.2	0	1,090	173.3	0	0	4	0	6	0	34,026	5409	0	12745	0	2	0	56.2%	9	0.00	0.0	70.2%	16759.0	0.000
Jun-14	30	774	123.1	0	1,311	208.5	0	0	4	0	7	0	34,800	5533	0	12954	0	3	0	62.9%	10	0.00	0.0	70.1%	17058.4	0.000
Jul-14	31	963	153.1	0	2,135	339.5	0	0	5	0	11	0	35,762	5686	0	13293	0	3	0	68.9%	15	0.00	0.0	70.0%	17511.3	0.000
Aug-14	31	1,544	245.5	0	2,279	362.3	0	0	8	0	12	0	37,307	5931	0	13655	0	3	0	59.6%	18	0.00	0.0	69.7%	18054.6	0.000
Sep-14	30	1,079	171.5	0	2,123	337.5	0	0	6	0	11	0	38,385	6103	0	13993	0	3	0	66.3%	15	0.00	0.0	69.6%	18519.0	0.000
Oct-14	31	612	97.2	0	1,126	179.1	0	0	3	0	6	0	38,997	6200	0	14172	0	3	0	64.8%	8	0.00	0.0	69.6%	18769.9	0.000
Nov-14	30	503	80.0	0	701	111.5	0	0	3	0	4	0	39,500	6280	0	14283	0	3	0	58.2%	6	0.00	0.0	69.5%	18940.4	0.000
Dec-14	31	521	82.8	0	642	102.0	0	0	3	0	3	0	40,021	6363	0	14385	0	2	0	55.2%	5	0.00	0.0	69.3%	19103.4	0.000
Jan-15	31	458	72.8	0	817	130.0	0	0	2	0	4	0	40,480	6436	0	14515	0	2	0	64.1%	6	0.00	0.0	69.3%	19287.2	0.000
Feb-15	28	381	60.5	0	680	108.0	0	0	2	0	4	0	40,860	6496	0	14623	0	2	0	64.1%	5	0.00	0.0	69.2%	19440.0	0.000
Mar-15	31	503	80.0	0	886	140.9	0	0	3	0	5	0	41,364	6576	0	14764	0	2	0	63.8%	6	0.00	0.0	69.2%	19640.0	0.000
Apr-15	30	467	74.2	0	827	131.5	0	0	2	0	4	0	41,831	6650	0	14896	0	2	0	63.9%	6	0.00	0.0	69.1%	19826.3	0.000
May-15	31	407	64.6	0	763	121.4	0	0	2	0	4	0	42,237	6715	0	15017	0	2	0	65.3%	5	0.00	0.0	69.1%	19995.5	0.000
Jun-15	30	349	55.4	0	707	112.5	0	0	2	0	4	0	42,586	6770	0	15130	0	2	0	67.0%	5	0.00	0.0	69.1%	20148.9	0.000
Jul-15	31	492	78.2	0	681	108.2	0	0	3	0	3	0	43,078	6849	0	15238	0	2	0	58.0%	5	0.00	0.0	69.0%	20314.9	0.000
Aug-15	31	408	64.8	0	507	80.5	0	0	2	0	3	0	43,486	6913	0	15318	0	2	0	55.4%	4	0.00	0.0	68.9%	20443.1	0.000
Sep-15	30	687	109.2	0	580	92.1	0	0	4	0	3	0	44,173	7023	0	15411	0	2	0	45.8%	6	0.00	0.0	68.7%	20615.5	0.000
Oct-15	31	709	112.8	0	726	115.4	0	0	4	0	4	0	44,882	7135	0	15526	0	2	0	50.6%	6	0.00	0.0	68.5%	20813.7	0.000
Nov-15	30	348	55.3	0	434	68.9	0	0	2	0	2	0	45,230	7191	0	15595	0	2	0	55.5%	4	0.00	0.0	68.4%	20923.4	0.000
Dec-15	31	719	114.4	0	887	141.1	0	0	4	0	5	0	45,949	7305	0	15736	0	2	0	55.2%	7	0.00	0.0	68.3%	21148.7	0.000
Jan-16	31	502	79.8	0	645	102.5	0	0	3	0	3	0	46,451	7385	0	15838	0	2	0	56.2%	5	0.00	0.0	68.2%	21310.0	0.000
Feb-16	29	421	66.9	0	490	77.8	0	0	2	0	3	0	46,872	7452	0	15916	0	2	0	53.8%	4	0.00	0.0	68.1%	21437.1	0.000
Mar-16	31	441	70.1	0	690	109.8	0	0	2	0	4	0	47,314	7522	0	16026	0	2	0	61.0%	5	0.00	0.0	68.1%	21598.6	0.000
Apr-16	30	502	79.8	0	689	109.6	0	0	3	0	4	0	47,816	7602	0	16136	0	2	0	57.8%	6	0.00	0.0	68.0%	21767.0	0.000
May-16	31	473	75.2	0	600	95.4	0	0	2	0	3	0	48,289	7677	0	16231	0	2	0	55.9%	5	0.00	0.0	67.9%	21917.8	0.000
Jun-16	3																									

East Manson Unit No. 6 (Section 28-013-28W1) - VRR Table																										
Month	Days	Monthly Oil Prod (bbl)	Monthly Oil Prod (m3)	Monthly Gas Prod (E3m3)	Monthly H2O Prod (bbl)	Monthly H2O Prod (m3)	Monthly H2O Inj (bbl)	Monthly H2O Inj (m3)	Oil Prod (m3/d)	Gas Prod (E3m3/d)	H2O Prod (m3/d)	H2O Inj (m3/d)	Cum Oil (bbl)	Cum Oil (m3)	Cum Gas (E3m3)	Cum H2O (m3)	Cum H2O Inj (m3)	Prod Well Count	GOR (m3/m3)	H2OCut %	Voidage (rm3/d)	Monthly VRR	Cum GOR (m3/m3)	H2OCut %	Cum Void (rm3)	Cum VRR
Jul-17	31	1,366	217.2	0	606	96.3	7,137	1,135	7	0	3	37	61,597	9793	0	17484	13065	2	0	30.7%	8	4.47	0.0	64.1%	24722.0	0.531
Aug-17	31	1,336	212.4	0	648	103.0	7,168	1,140	7	0	3	37	62,933	10005	0	17587	14204	2	0	32.7%	8	4.43	0.0	63.7%	24980.6	0.572
Sep-17	30	1,254	199.3	0	590	93.7	7,163	1,139	7	0	3	38	64,187	10205	0	17681	15343	2	0	32.0%	8	4.78	0.0	63.4%	25220.3	0.611
Oct-17	31	1,251	198.9	0	705	112.2	7,988	1,270	6	0	4	41	65,438	10403	0	17793	16613	2	0	36.1%	8	4.95	0.0	63.1%	25478.2	0.655
Nov-17	30	1,148	182.5	0	683	108.7	7,373	1,172	6	0	4	39	66,585	10586	0	17902	17785	2	0	37.3%	8	4.86	0.0	62.8%	25720.6	0.695
Dec-17	31	1,174	186.6	0	935	148.7	7,064	1,123	6	0	5	36	67,759	10773	0	18051	18908	2	0	44.3%	9	3.95	0.0	62.6%	26006.2	0.731
Jan-18	31	900	143.1	0	819	130.3	6,572	1,045	5	0	4	34	68,659	10916	0	18181	19953	2		47.7%	8	4.46	0.0	62.5%	26241.6	0.764
Feb-18	28	1,114	177.1	0	1,105	175.7	5,708	908	6	0	6	32	69,773	11093	0	18356	20861	2		49.8%	11	2.98	0.0	62.3%	26547.4	0.790
Mar-18	31	1,165	185.3	0	1,043	165.9	6,772	1,077	6	0	5	35	70,938	11278	0	18522	21937	2		47.2%	10	3.58	0.0	62.2%	26849.4	0.821
Apr-18	30	1,134	180.3	0	870	138.4	6,600	1,049	6	0	5	35	72,072	11458	0	18661	22987	2		43.4%	9	3.90	0.0	62.0%	27120.1	0.852
May-18	31	988	157.1	0	963	153.1	6,752	1,073	5	0	5	35	73,060	11615	0	18814	24060	2		49.4%	9	4.02	0.0	61.8%	27388.6	0.883
Jun-18	30	851	135.3	0	857	136.3	5,487	872	5	0	5	29	73,911	11751	0	18950	24932	2		50.2%	8	3.72	0.0	61.7%	27624.3	0.907
Jul-18	31	873	138.9	0	933	148.4	6,355	1,010	4	0	5	33	74,784	11889	0	19098	25943	2		51.7%	8	4.05	0.0	61.6%	27874.7	0.935
Aug-18	31	821	130.6	0	1,078	171.4	7,195	1,144	4	0	6	37	75,606	12020	0	19270	27087	2		56.8%	9	4.30	0.0	61.6%	28142.3	0.967
Sep-18	30	836	133.0	0	1,023	162.7	7,008	1,114	4	0	5	37	76,442	12153	0	19432	28201	2		55.0%	9	4.30	0.0	61.5%	28402.9	0.998
Oct-18	31	855	136.0	0	1,277	203.1	6,786	1,079	4	0	7	35	77,297	12289	0	19636	29280	2		59.9%	10	3.57	0.0	61.5%	28706.2	1.025
Nov-18	30	816	129.7	0	1,067	169.7	3,997	635	4	0	6	21	78,113	12419	0	19805	29915	2		56.7%	9	2.41	0.0	61.5%	28971.4	1.038
Dec-18	31	761	121.0	0	943	150.0	5,075	807	4	0	5	26	78,874	12540	0	19955	30722	2		55.4%	8	3.39	0.0	61.4%	29210.5	1.057
Jan-19	31	757	120.4	0	941	149.7	5,569	885	4	0	5	29	79,631	12660	0	20105	31607	2		55.4%	8	3.73	0.0	61.4%	29448.7	1.079
Feb-19	28	684	108.7	0	836	133.0	4,993	794	4	0	5	28	80,315	12769	0	20238	32401	2		55.0%	8	3.75	0.0	61.3%	29661.8	1.098
Mar-19	31	714	113.6	0	929	147.7	5,572	886	4	0	5	29	81,029	12882	0	20386	33287	2		56.5%	7	3.85	0.0	61.3%	29893.1	1.119
Apr-19	30	742	118.0	0	894	142.1	2,692	428	4	0	5	14	81,771	13000	0	20528	33715	2		54.6%	8	1.88	0.0	61.2%	30122.0	1.125
May-19	31	694	110.3	0	1,031	163.9	0	0	4	0	5	0	82,465	13110	0	20691	33715	2		59.8%	8	0.00	0.0	61.2%	30367.2	1.116
Jun-19	30	613	97.4	0	877	139.5	0	0	3	0	5	0	83,078	13208	0	20831	33715	2		58.9%	7	0.00	0.0	61.2%	30578.5	1.108
Jul-19	31	600	95.4	0	849	135.0	4,396	699	3	0	4	23	83,678	13303	0	20966	34414	2		58.6%	7	3.42	0.0	61.2%	30783.9	1.124
Aug-19	31	522	83.0	0	1,006	159.9	4,915	781	3	0	5	25	84,201	13386	0	21126	35195	2		65.8%	7	3.55	0.0	61.2%	31005.2	1.141
Sep-19	30	235	37.3	0	495	78.7	4,560	725	1	0	3	24	84,435	13424	0	21204	35920	2		67.8%	4	6.85	0.0	61.2%	31111.5	1.160
Oct-19	31	531	84.4	0	1,520	241.7	4,802	763	3	0	8	25	84,966	13508	0	21446	36684	2		74.1%	10	2.52	0.0	61.4%	31416.1	1.174
Nov-19	30	546	86.8	0	1,133	180.1	5,065	805	3	0	6	27	85,513	13595	0	21626	37489	2		67.5%	8	3.31	0.0	61.4%	31660.5	1.190
Dec-19	31	659	104.7	0	1,267	201.5	5,236	832	3	0	6	27	86,171	13700	0	21828	38321	2		65.8%	9	3.00	0.0	61.4%	31939.5	1.206
Jan-20	31	555	88.2	0	1,189	189.1	5,003	795	3	0	6	26	86,726	13788	0	22017	39117	2		68.2%	8	3.14	0.0	61.5%	32194.0	1.221
Feb-20	29	592	94.1	0	1,178	187.3	4,724	751	3	0	6	26	87,319	13882	0	22204	39868	2		66.5%	9	2.94	0.0	61.5%	32450.9	1.235
Mar-20	31	498	79.1	0	1,188	188.9	5,156	820	3	0	6	26	87,816	13961	0	22393	40687	2		70.5%	8	3.33	0.0	61.6%	32698.5	1.251
Apr-20	30	469	74.5	0	1,123	178.5	5,306	844	2	0	6	28	88,285	14036	0	22571	41531	2		70.5%	8	3.63	0.0	61.7%	32932.3	1.268
May-20	31	514	81.7	0	1,193	189.6	5,359	852	3	0	6	27	88,799	14118	0	22761	42383	2		69.9%	8	3.42	0.0	61.7%	33182.6	1.284
Jun-20	30	510	81.1	0	1,215	193.1	5,794	921	3	0	6	31	89,310	14199	0	22954	43304	2		70.4%	8	3.66	0.0	61.8%	33435.9	1.302
Jul-20	31	539	85.6	0	1,299	206.6	5,990	952	3	0	7	31	89,848	14284	0	23161	44256	2		70.7%	9	3.54	0.0	61.9%	33706.0	1.320
Aug-20	31	474	75.4	0	1,330	211.4	5,471	870	2	0	7	28	90,323	14360	0	23372	45126	2		73.7%	9	3.27	0.0	61.9%	33973.6	1.335
Sep-20	30	523	83.1	0	1,254	199.3	5,393	857	3	0	7	29	90,846	14443	0	23571	45983	2		70.6%	9	3.30	0.0	62.0%	34234.6	1.350
Oct-20	31	534	84.8	0	1,320	209.9	5,871	933	3	0	7	30	91,379	14528	0	23781	46917	2		71.2%	9	3.44	0.0	62.1%	34507.5	1.367
Nov-20	30	138	21.9	0	1,087	172.9	6,002	954	1	0	6	32	91,517	14550	0	23954	47871	2		88.8%	6	5.05	0.0	62.2%	34697.2	1.387
Dec-20	31	174	27.7	0	2,558	406.7	6,002	954	1	0	13	31	91,691	14577	0	24361	48825	2		93.6%	14	2.24	0.0	62.6%	35126.2	1.397

### East Manson Unit No. 6 - Rate Time



### East Manson Unit No. 6 - Rate Cum



# East Manson Unit No. 6 - Injection Parameters

Month	Oil Rate (m3/d)	Gas Rate (e3m3/d)	Water Rate (m3/d)	Water Inj Rate (m3/d)	02/01-28 Inj Press (psi)	Cum Oil (m3)	Cum Gas (e3m3)	Cum Water (m3)	Cum Inj Water (m3)	GOR (m3/m3)	WOR (m3/m3)
Jan-19	3.9	0.0	4.8	28.6	771	12,660	0.0	20,105	31607.1	0	1.24
Feb-19	3.9	0.0	4.7	28.3	789	12,769	0.0	20,238	32400.9	0	1.22
Mar-19	3.7	0.0	4.8	28.6	784	12,882	0.0	20,386	33286.8	0	1.30
Apr-19	3.9	0.0	4.7	14.3	777	13,000	0.0	20,528	33714.8	0	1.20
May-19	3.6	0.0	5.3	0.0	791	13,110	0.0	20,691	33714.8	0	1.49
Jun-19	3.2	0.0	4.6	0.0	785	13,208	0.0	20,831	33714.8	0	1.43
Jul-19	3.1	0.0	4.4	22.5	743	13,303	0.0	20,966	34413.7	0	1.41
Aug-19	2.7	0.0	5.2	25.2	744	13,386	0.0	21,126	35195.1	0	1.93
Sep-19	1.2	0.0	2.6	24.2	750	13,424	0.0	21,204	35920.1	0	2.11
Oct-19	2.7	0.0	7.8	24.6	650	13,508	0.0	21,446	36683.5	0	2.86
Nov-19	2.9	0.0	6.0	26.8	654	13,595	0.0	21,626	37488.8	0	2.07
Dec-19	3.4	0.0	6.5	26.9	679	13,700	0.0	21,828	38321.2	0	1.92

02/01-28-013-28W1 Rate vs Pressure

