

FLOOD REPORT FOR MANITOBA

April 19, 2020

High winds tomorrow afternoon (April 20) will create a moderate to high risk of ice pile up on the south shores of Lake Winnipeg (including areas near Gimli and Victoria beach), Lake Manitoba, Lake Winnipegosis, and Dauphin Lake for tomorrow afternoon and evening. A wind effect alert map for these areas is attached to the report.

Flood Warning*: - **Red River, from Emerson to the Red River Floodway Inlet Control Structure**

High Water Advisory*: - **Red River, from Lockport to Netley Creek**

Summary

- All flow and water level information is based on data available at 7:00 am. Morning Conditions reports, with current water level data, are available on the department's website, and flood sheets with updated forecast information will be posted at https://gov.mb.ca/mit/floodinfo/#forecasts_reports.
- Wind speeds are forecasted to gust NW up to 60 km/hr tomorrow afternoon and evening (April 20th, 1:00 pm to 10:00 pm). This creates a moderate to high risk of ice pile up on the south shores of Lake Winnipeg (including areas near Gimli and Victoria beach), Lake Manitoba, Lake Winnipegosis, and Dauphin Lake.
- A flood warning is in place for the Red River from Emerson to the Red River Floodway inlet, just south of the City of Winnipeg as the Red River is spilling its banks in most of this area.
- A high water advisory is in place for the Red River from Lockport to Netley Creek as water levels remain high and will continue to rise as the peak moves down the river.
- The Red River at Emerson, Letellier and St. Jean are near peak, water levels may fluctuate up or down 5 cm (2 inches) at the peak. Further downstream, from Morris to the Red River Floodway inlet control structure, peak levels are anticipated between April 20 and April 22. With the operation of the Floodway, the Red River level in Winnipeg at James Avenue is expected to peak between 19.0 feet and 19.3 feet between April 21 and April 23.
- A number of roads are impacted by high water levels. For detours and a complete list of road closures please call 511 or visit www.manitoba511.ca.
 - PR 217, from St. Jean Baptiste to PR 200, is closed.
 - PR 246, 1 km north of the PR 217 junction, is closed.
 - The northernmost extent of PR 320, 6 km north of PTH 4 is closed.
- Any questions or concerns about flood mitigation should be directed first to the municipal authority. Questions about forecasts, water levels, provincial waterways, or provincial

water control infrastructure can be directed to 204-945-1165 or by email to floodinfo@gov.mb.ca.

Weather

- The Red River valley could see a trace amount of precipitation in the next 24 hours, it is not expected to affect peak water levels.
- A minor precipitation event could bring up to 10 mm in central and northern Manitoba in the next five days, but it will have a minor impact on the flood risk on those areas.

Red River Basin

- The Red River at Emerson, Letellier and St. Jean are near peak, water levels may fluctuate up or down 5 cm (2 inches) at the peak. Further downstream, from Morris to the Red River Floodway inlet control structure peak levels are anticipated between April 20 and April 22. Conditions will continue to be monitored and the latest forecast information for the Red River is available online at https://gov.mb.ca/mit/floodinfo/#forecasts_reports.

	Today's level	Forecasted peak	
		Level	Date
Emerson	788.9 feet (240.45 m)	Near peak	Near peak
Letellier	783.9 feet (238.93 m)	Near peak	Near peak
St. Jean Baptiste	778.8 feet (237.38 m)	Near peak	Near peak
Morris – PTH 23	774.8 feet (236.16 m)	775.1 - 775.4 feet (236.25 - 236.35 m)	April 20-21
Ste. Agathe	766.1 feet (233.51 m)	766.6 - 766.9 feet (233.65 - 233.75 m)	April 20-21
St. Adolphe	762.4 feet (232.38 m)	762.5 – 763.0 feet (232.40 - 232.55 m)	April 21-22
Above Floodway Inlet	758.4 feet (231.16 m)	759.5 - 760.2 feet (231.50 - 231.70 m)	April 21-22

Note: water levels at Emerson and Ste Agathe will differ from those posted on the Water Survey of Canada website because different vertical datums are in use. For conversion information please see the most recent flood sheet.

- An inundation map for a portion of the Red River basin has been prepared by the Strategic Policy and Results Sector of Natural Resources Canada using data collected by the Canadian RCM-1 Earth observation satellite. This map is attached to the report and shows inundated areas as of Sunday morning, April 19.
- PTH 75 remains open and based on the current forecast, is expected to remain open.
- Provincial crews are deployed in a number of communities in the Red River Valley preparing for and implementing ring dike closures. Pumping operations are underway at most ring dike communities. Flood response teams are observing recommended public health mitigation measures for COVID-19.
 - Partial dike closures are in place at Emerson on both the Noyes and West Lynne dikes, both diked areas remain accessible by road. CN and CP railways are collaborating with provincial staff and attempting to keep rail lines open.

- A partial dike closure on the east side of Letellier at PR 201 is in place.
 - A partial dike closure is in place on the east end of St. Jean Baptiste, the community remains accessible by PTH 75.
 - A ramped closure on the north side of St. Adolphe at PR 200 is in place. The highway ditches on the south end have been filled in to prevent water from backing up into town.
- The Red River Floodway continues to be operated under Rule 1, reducing water levels in Winnipeg while maintaining water levels upstream of the inlet control structure at or just below natural. Flow in the Floodway channel was 17,272 cfs (489 cms) this morning.
 - The current water level at James Ave is 18.5 feet (5.49 m). With the operation of the Floodway, the Red River level in Winnipeg at James Avenue is expected to peak between 19.0 feet and 19.3 feet between April 21 and April 23.

Assiniboine River Basin

- The water level on the Shellmouth Dam Reservoir is 1,396.2 feet (425.56 m). Inflow increased to 1,043 cfs (30 cms) and outflow remain at 25 cfs (0.7 cms). As part of the normal spring operation plan, the next Shellmouth Reservoir Regulation Liaison Committee meeting is scheduled for Wednesday, April 22nd.
- Most sections of the lower Assiniboine River are now open. Flow on the lower Assiniboine River is 5,650 cfs (160 cms) and flow down the Portage Diversion channel is currently 713 cfs (20 cms). It is expected that the diversion will close this week.

Northern Manitoba

- A minor precipitation event could bring up to 10 mm in central and northern Manitoba, but it will have a minor impact on the flood risk on those areas.
- Temperature forecasts indicate that snow melt could start in late April in northern Manitoba regions, including the Saskatchewan and Carrot Rivers.
- Due to the near normal to slightly lower than normal snow content in many northern Manitoba basins, the rivers are expected to remain within the banks at most locations. The flood risk is generally low for northern Manitoba basins.
- As in previous years, there is a risk of ice pile up and ice jamming that could create a sudden rise of levels on these basins in a short period of time.

Manitoba Lakes

- Wind speeds are forecasted to gust NW up to 60 km/hr tomorrow afternoon and evening (April 20th, 1:00 pm to 10:00 pm). This creates a moderate to high risk of ice pile up on the south shores of Lake Winnipeg (including areas near Gimli and Victoria beach), Lake Manitoba, Lake Winnipegosis, and Dauphin Lake.
- Manitoba's major lakes remain largely ice covered. The largest lakes are reported at 80% or greater ice coverage, with some smaller lakes in southern Manitoba showing 60% or greater ice coverage.

- The water levels on Manitoba's major lakes are relatively stable and within normal or desirable ranges. Lake levels will be posted later today at https://gov.mb.ca/mit/floodinfo/#forecasts_reports.

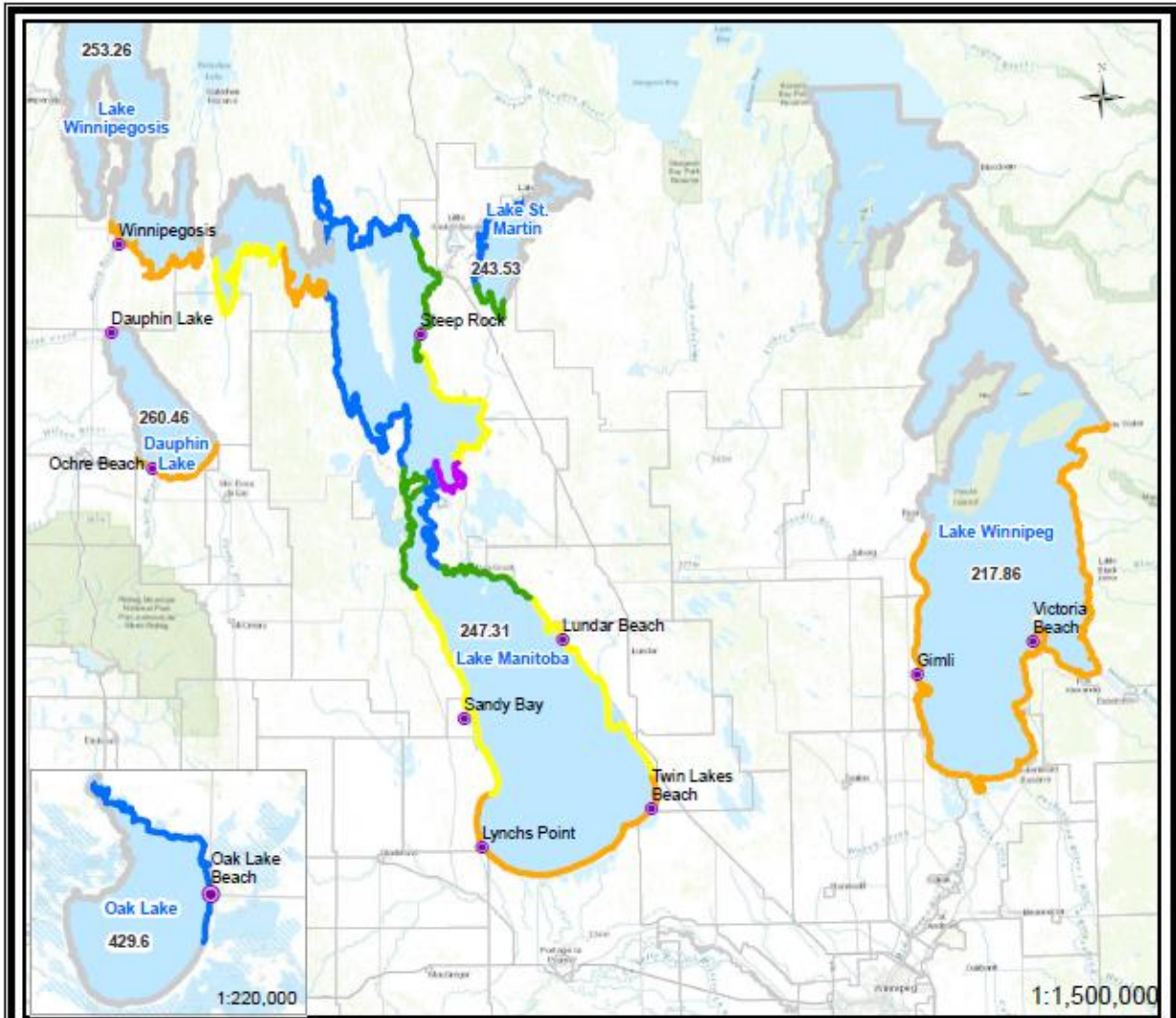
***Definitions**

Flood Warning: A flood warning is issued when river or lake levels are exceeding or are expected to be exceeding flood stage within the next 24 hours.

Flood Watch: A flood watch is issued when river or lake levels are approaching and likely to reach flood stage, but likely not within the next 24 hours.

High Water Advisory: A high water advisory is issued when a heavy storm or high flows are expected and may cause water levels to rise, but not necessarily reach flood stage. A high water advisory can be an early indicator for conditions that may lead to a flood watch or flood warning.

Manitoba Lake Wind Effect Forecast for April 20 PM, 2020



Location	Ave.Dir.from North (degree)	Ave. Speed (km/h)	Location	Ave.Dir.from North (degree)	Ave. Speed (km/h)
Dauphin Lake	N (357)	37	Manipogo area	N (343)	37
MS Lake west side - Sandy Bay	N (345)	44	Orne River area	NW (333)	35
MS Lake south side - Twin Beaches	N (338)	40	Wig Lake - Victoria Beach	N (340)	33
MS Lake middle - Voger/The Narrows	NW (337)	40	Wig Lake - Gimli Beach	N (347)	29
MS Lake east side - Lunder Beach	N (342)	34	Wig Lake - Alberta Beach	N (339)	30
Northeast 1	NW (335)	28	Wig Lake - O'Hanly	NW (335)	30
Northeast 2	NW (334)	29	Wig Lake south side	N (353)	30
Guymer	NW (333)	38	Lake Winnipegosis south side	N (350)	33
The Bluff	NW (336)	40	Oak Lake east side community	N (348)	30
Wepah area	NW (332)	42	Oak Lake north side community	N (349)	30
Dolly Creek area	NW (332)	42	Lake St. Martin north side	N (358)	25
Matheson's Point	NW (336)	33	Lake St. Martin west side	N (348)	24
Steep rock	NW (333)	33	Lake St. Martin southwest side	N (350)	27
Fairford area	NW (335)	28	Lake St. Martin south side	N (350)	27

Wind Effect Alert Categories	
Severe	Crest level increase will be greater than 1.5 meters; Wave action will be very significant and forceful.
High	Crest level increase will be in a range 0.9 ~ 1.5 meters; Wave action will be significant.
Moderate-High	Crest level increase will be in a range 0.6 ~ 0.9 meters; Wave action will be considerable.
Moderate	Crest level increase will be in a range 0.3 ~ 0.6 meters; Wave action will be moderate.
Low	Crest level increase will be less than 0.3 meters; Wave action will be low.
No Alert	Wind set-up and wave action are predicted to be light.
No Data	Wind effect data not available.

Note: All water levels labeled within the lakes are current wind eliminated lake levels provided in meters
 Hydrologic Forecasting and Water Management of Manitoba Infrastructure



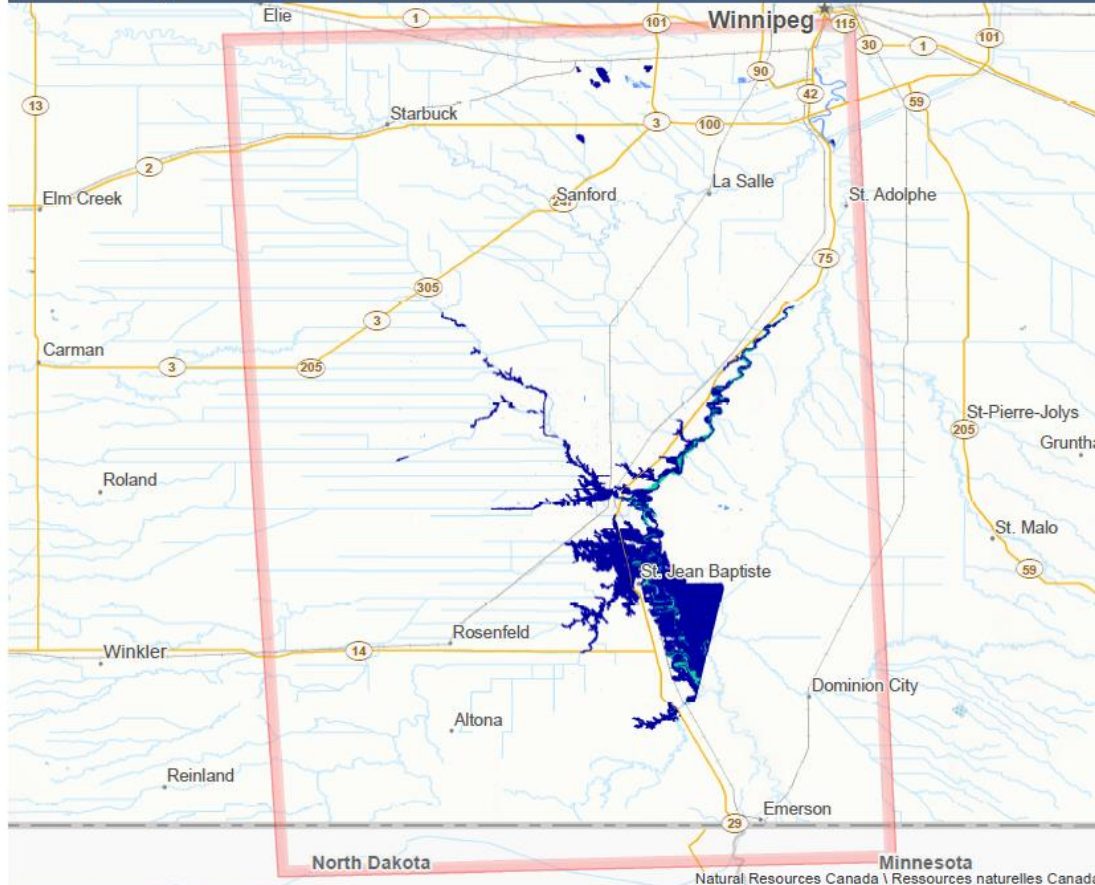
RCM-1 derived flood extent - Red River
Étendue des inondations extraite d'image RCM-1 - Rivière Rouge

Red Area, MB
 Région de la Rouge, MB

19 April 2020, 12:38 UTC / 19 avril 2020, 12:38 UTC

Floods In Canada / Inondations au Canada: <https://tinyurl.com/y26abtpg>

97° 25' 47" W / 49° 24' 53" N



Flood extent / L'étendue des inondations

- Footprint/Emprise au sol
- Permanent Water Bodies/Plan d'eau permanent
- Open Water Flood/Inondation en milieu ouvert
- Flooded Vegetation/Végétation inondée
- Urban Flood/Inondation en milieu urbain

0 5 10 15 20 25 km

Produced by the Canada Centre for Mapping and Earth Observation, Natural Resources Canada / Produit par le Centre canadien de cartographie et d'observation de la Terre, Ressources naturelles Canada.

The open water flood products are derived from RCM-1 images with a system developed and operated by the Department of Natural Resources Canada. © All rights reserved. / Les produits de l'étendue des eaux libres liés aux inondations sont réalisés à partir d'images RCM-1, à l'aide d'un système mis au point et exploité par le Ministère des Ressources naturelles du Canada. © Tous droits réservés.

RCM RADARSAT Constellation Mission Data and Products © Government of Canada (2020) - All Rights Reserved. Official mark of CSA.



Natural Resources Canada / Ressources naturelles Canada

Canada

RCM-1
 HH, HR-5m



The flood extent products are derived from satellite images and ancillary data with a system developed and operated by the Strategic Policy and Innovation Sector of Natural Resources Canada © Department of Natural Resources Canada. All rights reserved.