

Hydrologic Forecast Centre - Manitoba Infrastructure

Updated on 19-Nov-19

Last Reading Date	Eastern Manitoba Flows	
	Hydrometric Stations	Flow (cfs)
19-Nov-19	Whitemouth River near Whitemouth	1,452
19-Nov-19	Bloodvein River above Bloodvein Bay	4,686
30-Oct-17	Fisher River near Dallas	-

Note: Please go to the next pages to view the historical and current flow hydrographs for these rivers

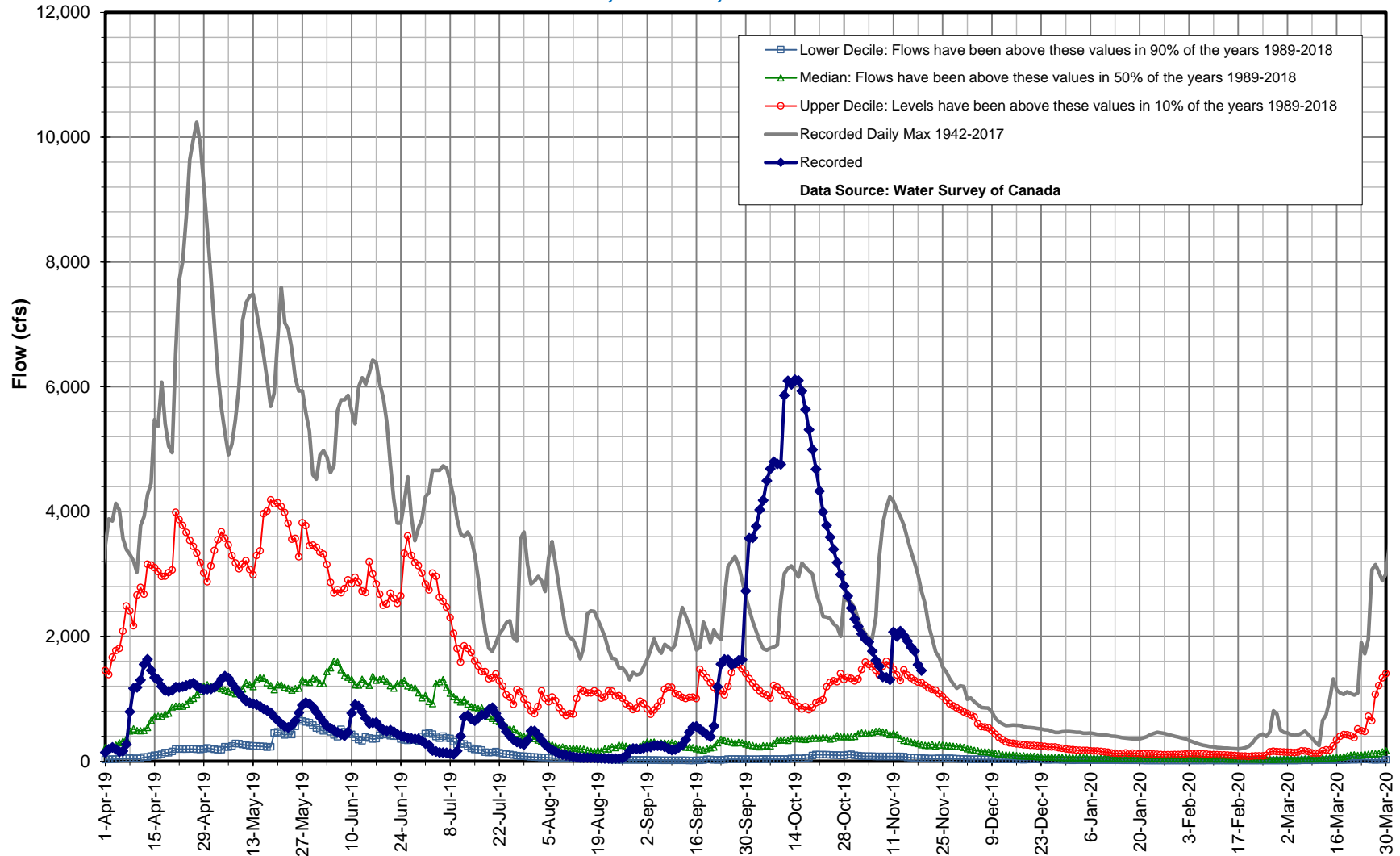
* Flow and level readings could be ice affected

* Real-time flow and level data is provisional and subject to change. Data provided by Water Survey of Canada/Environment Canada.

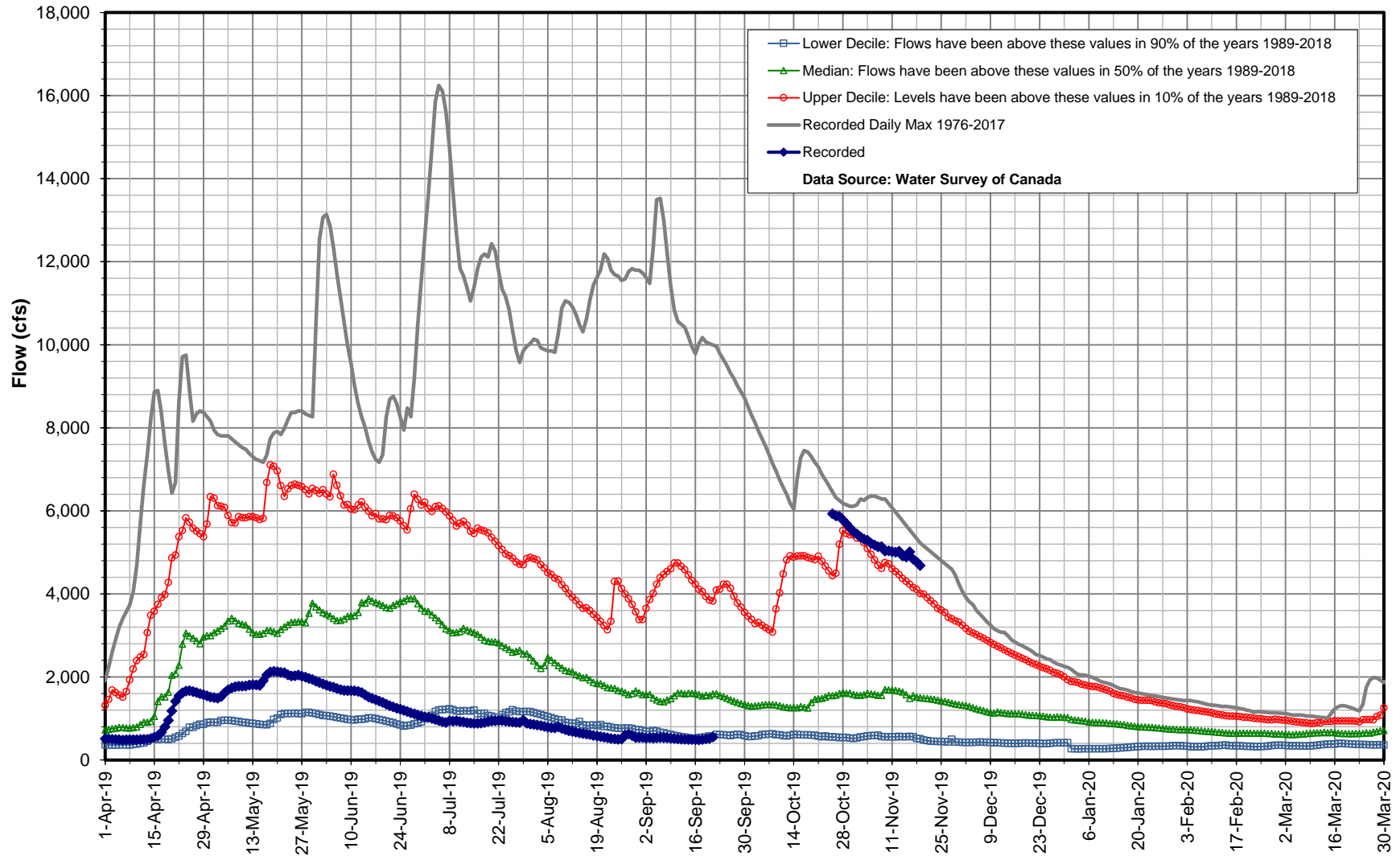
Hydrologic Forecast Centre - Manitoba Infrastructure

Whitemouth River near Whitemouth

Nov 19, 2019 : 1,452 cfs



Hydrologic Forecast Centre - Manitoba Infrastructure
Bloodvein River above Bloodvein Bay
Nov 19, 2019 : 4,686 cfs



Hydrologic Forecast Centre - Manitoba Infrastructure
Fisher River near Dallas
Nov 03, 2017 : 22 cfs

