

AGRICULTURE statistics

MANITOBA

AGRICULTURAL PROFILE, 2016 CENSUS

- The 2016 Census of Agriculture counted 14,791 census farms in Manitoba, a 6.8% decline from the previous census which reported 15,877 farms in 2011. This is less extreme than the 13.6% decline that occurred between 1996 and 2001, reflective of the continued out-migration of farm operators, farm consolidation and farm retirements. The number of operations in Manitoba has been steadily declining since 1941. Manitoba farm numbers rank sixth in Canada and account for 7.6% of Canada's 193,492 farms in 2016. The number of farms in Canada declined by 5.9% compared to 2011.
- The number of farm operators in Manitoba declined 9.8% to 20,140 people in 2016. In 2015, 44.4% of farm operators in Manitoba worked more than 40 hours a week on average on agricultural operations, compared with 46.6% in 2010. At the national level, this percentage was 37.5% in 2015. Fewer farmers worked off the farm in 2015, with 42.9% of farm operators in Manitoba reporting an off farm job compared with 46.2% in 2010.
- Manitoba has the second youngest population of farm operators in Canada with an average age of 53.8 years. Quebec ranked first with an average age of 52.9 years. Only Manitoba and Quebec have an average operator age below the national average of 55.0 years. From 2011 to 2016, the proportion of farm operators in the oldest age category (55 years of age and older) increased to 52.1%.
- While the overall number of farms in Manitoba has been declining, the size in terms of area, herd sizes and gross farm receipts has been increasing. The average Manitoba farm was 1,193 acres in 2016, up 5.1 % from 1,135 acres in 2011. Manitoba's total farm area was 17.6 million acres in 2016 compared to 18.0 million acres in 2011, a decrease of 2.1%.
- In 2016, there were 11.5 million acres of cropland in Manitoba, an increase of 7.3%. The return of land which had been fallow in 2011 due to flooding accounted for much of the increase in cropland in Manitoba between the censuses. There were shifts in cropland area away from hay to field crops. Currently 86.8% of the cropland is in field crops and 13.1% is used for hay. The province accounts for 12.3% of Canada's cropland area.
- Gross farm receipts are reported for the year prior to the census. They differ from farm cash receipts in concepts, methods and coverage. In 2015, Manitoba's total gross farm receipts were \$6.8 billion, 29.2% higher than the previous census period and operating expenses increased 26.9% to \$5.6 billion, in 2015. The average gross receipts for all Manitoba farms were \$462,007. For every dollar in sales, farms on average incurred 81 cents in operating expenses in 2015 for an expense-to-receipt ratio of 0.81, down from 0.83 in 2010.
- While the number of farms with less than \$250,000 of gross farm receipts fell by 15.3% between censuses, those with \$250,000 or more increased by 14.2%. There were 5,175 of these larger farms in Manitoba in 2016 and they represented almost 35% of farms in the province.
- The value of farm capital increased 73.9% from 2011 to 2016 to \$42.2 billion. Land and buildings rose by 81.4% to \$33.8 billion, machinery and equipment increased by 31.8% to \$5.7 billion and the value of livestock and poultry increased by 205% to \$2.7 billion. The value of the land and buildings per acre in Manitoba increased 64.5% (in 2016 constant dollars) from 2011 to \$1,919 per acre in 2016. At the national level, this value was \$2,696 per acre.
- As has been the case for previous census periods, there has been a trend for farmers to move away from traditional crops to alternatives that would reduce their input costs or increase their per-acre revenues. Canola is the leading field crop by area in Manitoba with 3.2 million acres, followed by spring wheat with 2.8 million acres and soybeans with 1.6 million acres. Soybean acreage grew by 940,365 acres between 2011 and 2016. Field pea acreage was up by 311.9% to 163,153 acres and corn for grain was up 72.8% to 364,905 acres.

- Total vegetable area in Manitoba decreased to 4,789 acres in 2016, down 7.3% from the last census, mainly due to a decrease in sweet corn area which has fallen by nearly one-third. Manitoba reported the smallest fruits, berries and nuts area in Canada at 694 acres, which is 14.0% lower than in 2011.
- The number of farms reporting organic products for sale declined by 11.8% to 161 farms in 2016. However, the proportion of farms producing organic products in Manitoba was stable from 2011 to 2016 at 1.1%. Nationally, farms producing organic products accounted for 2.2% of the total farms in 2016.
- There were 3.38 million pigs on 665 farms in 2016, up 18.7% from 2011, which was the largest increase in Canada. Manitoba has the third largest number of pigs in Canada following Quebec and Ontario. Manitoba has the largest pig farms in Canada, with an average herd size of 5,087 head.
- The total inventory of 1.1 million head of cattle and calves was 8.9% lower than the previous census period. The number of farms with cattle declined 14.4% to 6,499 farms in 2016. The number of beef cattle declined 7.9% from 2011 to 636,543 head in 2016, as some producers sold stock to take advantage of higher prices and retire or shift to other types of agricultural production. There were 428,882 beef cows, down 11.5%, on 5,730 farms, down 13.9%.
- The number of farms reporting dairy cows declined by 17.4% to 399 in 2016 while the number of dairy cows declined by 6.6% to 39,083 head. Milk production increased 6.1% over this period. While there were fewer dairy cows, this was offset by increased production per animal, attributable to improved animal nutrition, genetics and production practices.
- The number of farms reporting sheep and lambs remained relatively steady at 522 farms in 2016. The sheep flock grew 43.2% to 90,423 animals in 2016. This was the largest increase in Canada and counter to the national trend, where the sheep flock declined by 4.9%.

Other agriculture highlights in Manitoba

- In Manitoba, 3.5% of farms reported having renewable energy producing systems in 2015, compared with 5.3% nationally.
- In Manitoba, 22.2% of farms reported being incorporated in 2016, up from 17.6% in 2011. Nationally, incorporated farms accounted for 25.1% of all farms in 2016.
- The 2016 Census of Agriculture marked the first time farm operators were asked if farm operations had a written succession plan. In 2016, 8.1% of farms in Manitoba had a written succession plan compared with 8.4% nationally.
- In Manitoba, 35.1% farms reported using automated steering technology in 2015.
- In Manitoba, 6.1% of farms reported selling agricultural products directly to consumers in 2015.

SOURCE: Census of Agriculture, Statistics Canada.

Website: <http://www.statcan.gc.ca/ca-ra2011/index-eng.htm>

Manitoba Agriculture, Market Intelligence

PH: (204) 945-3503

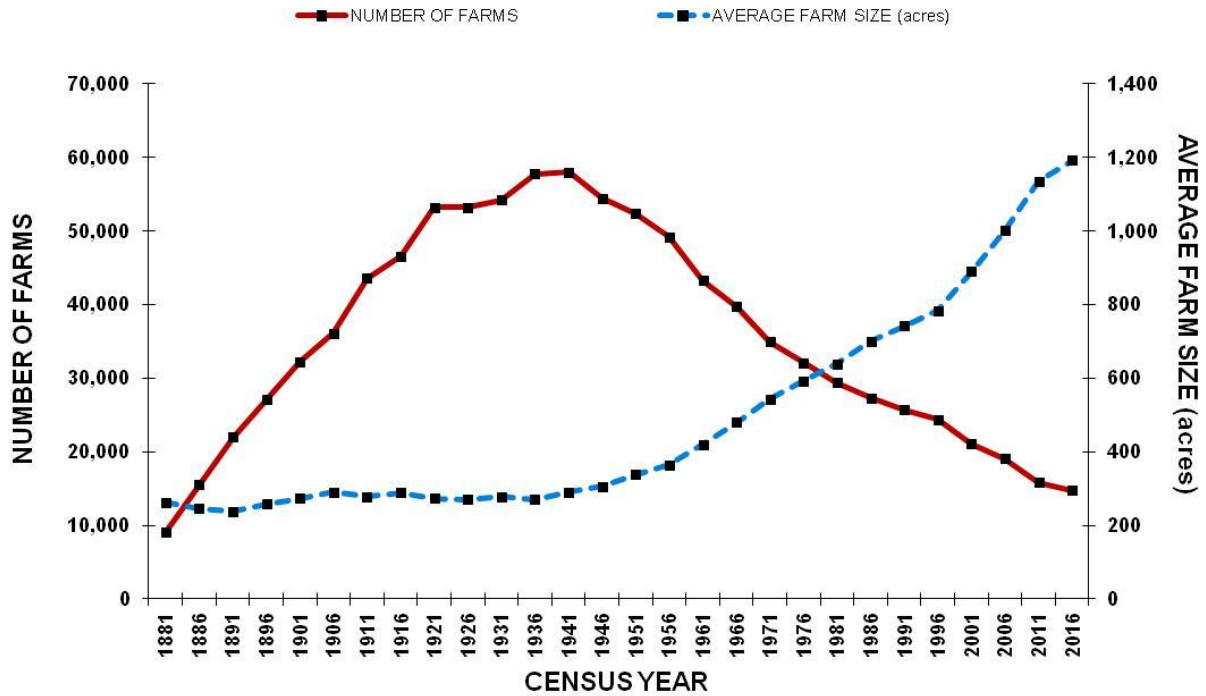
May 11, 2017

Variables ¹	Manitoba			Canada (1)		
	2011	2016	%16/11	2011	2016	%16/11
Total Farm Operators (2)	22,315	20,140	90.3	293,925	271,935	92.5
Average Age of Farm Operators	53.1	53.8	101.3	54	55	101.9
Total census farms	15,877	14,791	93.2	205,730	193,492	94.1
Average size of farms	1,135	1,192	105.0	778.4754192	820.3082918	105.4
Total area of farms (3, 29)	18,023,472	17,637,639	97.9	160,155,748	158,723,092	99.1
Area owned	11,895,371	11,628,535	97.8	103,450,739	99,631,167	96.3
Area rented, leased or crop-shared from all sources:	7,002,339	6,893,085	98.4	63,305,399	65,813,403	104.0
Area leased from government	1842362	1,709,553	92.8	22,081,725	21,209,165	96.0
Areas rented or leased from others	4,932,633	4,976,618	100.9	36,832,880	40,076,220	108.8
Area crop shared from others	227344	206,914	91.0	4,390,794	4,528,018	103.1
Farms with gross farm receipts of \$100,000 or more (4,5,6)	7,282	7,885	108.3	77,704	84,253	108.4
LAND USE (7)	acres*			acres*		
Land in crops (8)	10,746,290	11,530,095	107.3	87,352,431	93,382,638	106.9
Summerfallow (8)	236,771	100,496	42.4	5,152,632	2,209,071	42.9
Total pasture land	4,651,241	4,305,943	92.6	50,004,207	47,796,714	95.6
All other land (8,9)	3,746,876	2,977,010	79.5	29,748,136	26,752,150	89.9
FIVE MAJOR CROPS	acres*			acres*		
1) Canola	3,288,594	3,199,644	97.3	19,368,997	20,606,778	106.4
2) Spring wheat (excluding durum	2,586,198	2,826,735	109.3	16,866,217	15,693,427	93.0
3) Alfalfa and alfalfa mixture	1,318,478	1,060,638	80.4	11,230,105	9,276,755	82.6
4) Soybeans	705,032	1,645,397	233.4	3,957,772	5,615,864	141.9
5) Oats	695,945	444,086	63.8	3,761,367	3,159,687	84.0
LAND MANAGEMENT (10)	acres*			acres*		
Area irrigated (11)	70,399	80,487	114.3	1,903,077	2,234,994	117.4
Area applied with commercial fertilizer	8,529,553	9,181,933	107.6	61,573,419	70,377,244	114.3
Area treated with herbicides	8,731,802	9,434,418	108.0	65,975,642	72,445,698	109.8
Area treated with insecticides	1,203,235	1,767,662	146.9	7,783,333	12,832,444	164.9
Area treated with fungicides	4,014,022	4,799,456	119.6	13,617,191	23,124,753	169.8
Area treated with lime	57,823	55,874	96.6	950,075	1,251,169	131.7
Area treated with trace minerals and nutrients	..	725,485	-	..	6,840,859	-
Area prepared for seeding (12):	9,223,901	10,300,825	111.7	73,094,003	81,629,253	111.7
Area tilled retaining most of the residue on surface	3,476,097	3,983,034	114.6	17,954,616	19,339,204	107.7
Area tilled incorporating most of the residue into soil	3,530,145	4,249,555	120.4	13,897,893	14,117,179	101.6
Area of no-till	2,217,659	2,068,236	93.3	41,241,494	48,172,870	116.8
LIVESTOCK AND POULTRY	# of animals			# of animals		
Total cattle and calves (13)	1,210,568	1,102,809	91.1	12,789,965	12,530,730	98.0
Total beef cows	484,727	428,882	88.5	3,849,368	3,732,555	97.0
Total dairy cows	41,848	39,083	93.4	961,726	939,071	97.6
Total sheep and lambs (14)	63,162	90,423	143.2	1,108,574	1,054,260	95.1
Total pigs (15)	2,850,581	3,382,897	118.7	12,679,104	14,091,503	111.1
Total hens and chickens (16)	8,061,629	8,224,977	102.0	133,025,153	145,519,566	109.4
Total turkeys (17)	722,910	775,214	107.2	8,021,500	8,423,900	105.0
Total horses and ponies	33,752	20,662	61.2	392,340	291,561	74.3
Total goats	12,818	7,256	56.6	225,461	230,034	102.0
Total mink	x	17278	-	783,185	550,660	70.3
Total bison (buffalo)	14,116	x	-	125,142	119,314	95.3
Total rabbits	3985	2,050	51.4	184935	172,489	93.3

Variables ¹	Manitoba			Canada (1)		
	2011	2016	%16/11	2011	2016	%16/11
RECEIPTS AND EXPENSES	<i>2010 dollars</i>	<i>2015 dollars</i>		<i>2010 dollars</i>	<i>2015 dollars</i>	
Total gross farm receipts (4,5,6)	5,289,641,386	6,833,550,152	129.2	51,061,935,759	69,367,544,142	135.8
Average gross farm receipts	333,164	462,007	138.7	248,199	358,503	144.4
Total operating expenses (18,19,20,21,22,23)	4,386,823,955	5,569,047,722	126.9	42,191,084,542	57,459,558,415	136.2
Average operating expense	276,301	376,516	-	205,080	296,961	144.8
CAPITAL AND DEBT	<i>2011 dollars</i>	<i>2016 dollars</i>		<i>2011 dollars</i>	<i>2016 dollars</i>	
Total farm capital value (24, 25)	24,266,120,954	42,191,671,388	173.9	330,751,085,312	509,664,649,639	154.1
Farm machinery & equipment	4,295,624,155	5,660,278,240	131.8	41,441,794,814	53,869,200,662	130.0
Livestock & poultry	1,309,889,598	2,685,943,884	205.1	13,157,665,567	27,931,304,484	212.3
Land & buildings (26,27)	18,660,607,201	33,845,449,264	181.4	276,151,624,931	427,864,144,493	154.9
Average capital value	1,528,382	2,852,523	186.6	1,607,695	2,634,035	163.8
Total census farms	15,877	14,791	93.2	205,730	193,492	94.1
Farms with gross farm receipts of \$100,000 or more (4,5,6)	7,282	7,885	108.3	77,704	84,253	108.4
Farms by operating arrangements (28):						
Sole proprietorship	9,041	8,030	88.8	114,006	100,061	87.8
Partnership arrangements	3,982	3,409	85.6	50,335	44,237	87.9
Corporate farms:						
Family	2,490	3,084	123.9	35,749	43,457	121.6
Other	307	206	67.1	4,965	5,135	103.4
Other farms (institutions, etc.)	57	62	108.8	675	602	89.2
Farms by tenure (29):						
Area owned	15,278	13,986	91.5	197,227	182,818	92.7
Area rented, leased or crop-shared from all sources:	9,843	9,347	95.0	97,939	94,877	96.9
Area leased from government	1,909	1,692	88.6	17,591	15,954	90.7
Areas rented/leased from others	7,210	6,959	96.5	69,737	67,924	97.4
Area crop shared from others	724	696	96.1	10,611	10,999	103.7
Farms reporting technologies used on the operation:						
Computers/laptops for farm management (30)	..	8,762	-	..	108,655	-
Smartphones/tablets for farm management (30)	..	6920	-	..	83071	-
Automated steering (auto-steer)	..	5192	-	..	39708	-
GPS technology	..	6204	-	..	58166	-
GIS mapping (e.g., soil mapping)	..	1482	-	..	15801	-
Greenhouse automation	..	59	-	..	1,579	-
Robotic milking	..	64	-	..	1,063	-
Automated environmental controls for animal housing	..	521	-	..	8695	-
Automated animal feeding	..	570	-	..	9405	-
Other technologies	..	91	-	..	1185	-
Farms reporting renewable energy producing system (31):	..	524	-	..	10,185	-
Solar panels	..	451	-	..	8658	-
Wind turbines	..	56	-	..	1597	-
Anaerobic biodigester (biogas or methane)	..	2	-	..	63	-
Biodiesel production systems	..	2	-	..	16	-
Geothermal electric power generator	..	0	-	..	0	-
Hydro electric power generator	..	0	-	..	60	-
Other renewable energy producing systems	..	52	-	..	518	-

Variables ¹	Manitoba			Canada (1)		
	2011	2016	%16/11	2011	2016	%16/11
All farms reporting by type (32,33):	15,877	14,791	93.2	205,730	193,492	94.1
Cattle ranching and farming	4,485	4,128	92.0	49,613	46,538	93.8
Hog and pig farming	318	262	82.4	3,470	3,305	95.2
Poultry and egg production	253	250	98.8	4,484	4,903	109.3
Sheep and goat farming	196	174	88.8	3,924	3,056	77.9
Other animal production	1,387	1,175	84.7	24,124	19,792	82.0
Oilseeds and grain farming	6,618	6,703	101.3	61,692	63,628	103.1
Vegetable and melon farming	189	196	103.7	4,822	5,514	114.4
Fruit and tree nut farming	94	75	79.8	8,253	7,845	95.1
Greenhouse, nursery and floriculture production	259	192	74.1	7,946	6,449	81.2
Other crop farming	2,078	1,636	78.7	37,402	32,462	86.8
Farms reporting direct selling to consumers (34):	..	900	-	..	24,510	-
Farms reporting unprocessed agricultural products sold	..	876	-	..	23543	-
Farms reporting value-added products sold	..	97	-	..	3538	-
Farms reporting using farm gate sales, stands, kiosks, U-pick	..	804	-	..	21921	-
Farms reporting using farmers' markets	..	175	-	..	5397	-
Farms reporting using Community Supported Agriculture (CSA)	..	34	-	..	1,272	-
Farms reporting using other methods	..	26	-	..	939	-
Farms reporting horticulture and organic production (35):						
Organic products	180	161	89.4	4,120	4,289	104.1
Certified organic products	169	142	84.0	3,713	3,663	98.7
Greenhouse area under glass, plastic or other protection	187	166	88.8	4,976	4,641	93.3
Mushrooms	3	1	33.3	189	305	161.4
Nursery products	99	80	80.8	3,438	2,780	80.9
Sod	15	13	86.7	375	265	70.7
Christmas trees	60	39	65.0	2,381	1,872	78.6
Farms reporting application of (10):						
Irrigation (11)	223	276	123.8	14,816	16,549	111.7
Herbicides	8,534	8,443	98.9	96,724	95,765	99.0
Insecticides	1,804	2,710	150.2	21,913	29,381	134.1
Fungicides	4,172	4,607	110.4	25,669	34,767	135.4
Commercial fertilizer	8,546	8,687	101.6	99,599	98,650	99.0
Lime	110	99	90.0	11,470	12,251	106.8
Trace minerals and nutrients	..	767	-	..	14,928	-
Farms reporting manure applications (36):	8,594	4,299	50.0	113,082	66,227	58.6
Solid spreader (37)	4,770	3,960	83.0	66,652	62,398	93.6
Liquid spreader (surface)	201	154	76.6	9,612	9,708	101.0
Liquid spreader (injected)	652	639	98.0	9,312	9,162	98.4

MANITOBA FARMS AND AVERAGE FARM SIZE 1881- 2016



Source: Statistics Canada

Manitoba Agriculture, Market Intelligence

NUMBER OF MANITOBA FARMS CLASSIFIED BY TOTAL GROSS FARM RECEIPTS (4,5,6)

Classifications by Total Gross Farm Receipts	2016		2011		2006	
	# of Farms	% of Total	# of Farms	% of Total	# of Farms	% of Total
under \$10,000	1,916	13%	2,716	17%	3,426	18%
\$10,000 - \$24,999	1,585	11%	1,971	12%	2,779	15%
\$25,000 - \$49,999	1,547	10%	1,845	12%	2,516	13%
\$50,000 - \$99,999	1,858	13%	2,063	13%	2,813	15%
\$100,000 - \$249,999	2,710	18%	2,753	17%	3,875	20%
\$250,000 - \$499,999	2,032	14%	2,039	13%	2,058	11%
\$500,000 - \$999,999	1,626	11%	1,426	9%	1,587	8%
\$1,000,000 - \$1,999,999	959	6%	676	4%	-	-
\$2,000,000 and over	558	4%	388	2%	-	-
Total # farms	14,791	100%	15,877	100%	19,054	100%
Total Gross Farm Receipts	\$6,833,550,152		\$5,289,641,386		\$4,073,912,291	

Data are reported on Census Day or for the preceding calendar or fiscal year.

Symbols:
* Land area is reported in acres (ac). One acre equals 0.40469 hectares or 1.18 arpents.
X suppressed to meet the confidentiality requirements of the Statistics Act
.. not available for a specific reference period
0 true zero or a value rounded to zero

General Notes
The nine-digit geographic code at the end of the geographic names comprises two digits for the province, two for the census agricultural region, two for the census division and three for the census consolidated subdivision.
Due to confidentiality constraints, the data for one or more geographic areas having very few farms may be combined with the data from another census consolidated subdivision or census division. For the names of the geographic areas amalgamated access Geographic area amalgamations.
There are significant refinements in the geographic assignment of agricultural operations and changes in census consolidated subdivision boundaries between censuses. These assignment and boundary changes mean that caution should be taken when comparing the data between censuses. This effect is particularly pronounced when comparing 2016 Census of Agriculture data to previous census data in Prince Edward Island, Quebec and the Northwest Territories.
Census agricultural regions are composed of groups of adjacent census divisions. Prior to 2016, in Saskatchewan, census agricultural regions were made up of groups of census consolidated subdivisions, but these groups did not necessarily respect census division boundaries.

Note(s):	
1	The Yukon Territory, Northwest Territories and Nunavut are not included in Canada totals.
2	Operators. Up to three operators can be reported per farm. This is a count of distinct operators; hence, operators of two or more separate farms are included only once in the total.
3	Total area. Total farm area is the difference between the sum of all land tenures minus "Total area used by others." The "number of farms reporting" does not equal the sum of the parts because farms reporting more than one category (or activity) are only counted once.
4	Farms classified by total gross farm receipts. In 2011, gross farm receipts and some operating expenses are understated at the aggregate level due to the increase in contractual arrangements (e.g., contract feeding), custom work performed by non-farmers, and the involvement in primary agriculture of large non-farm corporations such as food processors, meatpacking plants and others.
5	Farms classified by total gross farm receipts. Comparisons of the Census of Agriculture data with other Statistics Canada sources such as the Taxation Data Program (TDP), the Farm Financial Survey (FFS) and the Agriculture Economic Statistics (AES) series are affected by differences in concepts, methods and coverage. The combined effect of these differences may result in substantial discrepancies in level estimates and in trends.
6	Farms classified by total gross farm receipts. All dollar values are based on the current dollar of the reference year.
7	Land use. Due to data processing changes, caution should be taken when comparing 2016 Census of Agriculture data with previous censuses for land use and tenure in British Columbia.
8	Land in crops, summerfallow and all other land. In 2011, in Alberta, Saskatchewan, and Manitoba, land that was reported as "too wet to seed" has been classified as "other land" instead of cropland or summerfallow.
9	All other land. In 2016 and 2011, in Nova Scotia the area in "Christmas tree area, woodlands and wetlands" is higher than in previous censuses, partly due to the inclusion of integrated agricultural-forestry operations.
10	Land management. As in previous censuses, the area of land on which herbicides, insecticides and fungicides were applied is under-reported.
11	Area irrigated. In 2011, the "number of farms reporting" does not equal the sum of the parts because farms reporting more than one category (or activity) are only counted once.
12	Area prepared for seeding. The "number of farms reporting" does not equal the sum of the parts because farms reporting more than one category (or activity) are only counted once.
13	Total cattle and calves. "Total cattle and calves" includes "Calves under 1 year," "Steers 1 year and over," "Heifers for slaughter or feeding," "Heifers for beef herd replacement," "Heifers for dairy herd replacement," "Beef cows," "Dairy cows" and "Bulls 1 year and over". The "number of farms reporting" does not equal the sum of the parts because farms reporting more than one category (or activity) are only counted once.
14	Total sheep and lambs. "Total sheep and lambs" includes "Rams," "Ewes" and "Lambs". The "number of farms reporting" does not equal the sum of the parts because farms reporting more than one category (or activity) are only counted once.
15	Total pigs. "Total pigs" includes "Boars," "Sows and gilts for breeding," "Nursing pigs", "weaner pigs" and "Grower and finishing pigs". The "number of farms reporting" does not equal the sum of the parts because farms reporting more than one category (or activity) are only counted once.
16	Total hens and chickens. "Total hens and chickens" includes "Broilers, roasters and Cornish," "Pullets under 19 weeks intended for laying" and "Laying hens 19 weeks and over". The "number of farms reporting" does not equal the sum of the parts because farms reporting more than one category (or activity) are only counted once.
17	Turkeys. Turkey inventories reflect the total number of birds on Census Day and should be used with caution. Poultry inventories will fluctuate because barns that were empty on Census Day had no inventories to report. Users are advised to use the annual production data as a more accurate reflection of changes in these agricultural sectors over time.

18	Total operating expenses. In 2011, gross farm receipts and some operating expenses are understated at the aggregate level due to the increase in contractual arrangements (e.g., contract feeding), custom work performed by non-farmers, and the involvement in primary agriculture of large non-farm corporations such as food processors, meatpacking plants and others.
19	Total operating expenses. Comparisons of the Census of Agriculture data with other Statistics Canada sources such as the Taxation Data Program (TDP), the Farm Financial Survey (FFS) and the Agriculture Economic Statistics (AES) series are affected by differences in concepts, methods and coverage. The combined effect of these differences may result in substantial discrepancies in level estimates and in trends.
20	Total operating expenses. All dollar values are based on the current dollar of the reference year.
21	Total operating expenses. "Total farm business operating expenses" does not include depreciation or capital cost allowance.
22	Total operating expenses. In 2011, the "number of farms reporting" does not equal the sum of the parts because farms reporting more than one category (or activity) are only counted once.
23	Total operating expenses. In 2016, due to content changes, only "total farm business operating expenses" is available.
24	Total farm capital. The "number of farms reporting" does not equal the sum of the parts because farms reporting more than one category (or activity) are only counted once.
25	Total farm capital. All dollar values are based on the current dollar of the reference year.
26	Total value of land and buildings. "Total value of land and buildings" includes value of "Land and buildings owned" and of "Land and buildings rented or leased from others". Value of land and buildings reflect present market values as reported by respondents.
27	Total value of land and buildings. Value of land and buildings reflect present market values as reported by respondents.
28	Operating arrangements. In 2016, due to improvements in data processing for "operating arrangements," caution should be taken when comparing the 2016 Census of Agriculture data with previous censuses, particularly in Quebec.
29	Land tenure. Due to data processing changes, caution should be taken when comparing 2016 Census of Agriculture data with previous censuses for land use and tenure in British Columbia.
30	Farms reporting technology. Different respondent interpretations of what constitutes use of technology for farm management may have led to underreporting of computer and smartphone use.
31	Farms reporting renewable energy. The "number of farms reporting" does not equal the sum of the parts because farms reporting more than one category (or activity) are only counted once.
32	Farms classified by the North American Industry Classification System (NAICS). The farm type classification used by the Census of Agriculture is based on industry groups (four-digit codes) and Canadian industries (six-digit codes) from the North American Industry Classification System (NAICS). NAICS is revised periodically. Farm-type data for the 2016 Census of Agriculture were derived using NAICS 2012. The 2011 Census of Agriculture data were derived using NAICS 2007.
33	Farms classified by the North American Industry Classification System (NAICS). Changes in farm types over time do reflect a shift in farming activity but could also be influenced by changing commodity prices.
34	Farms reporting direct selling to consumers. The "number of farms reporting" does not equal the sum of the parts because farms reporting more than one category (or activity) are only counted once.
35	Farms reporting horticulture and organic production. The "number of farms reporting" does not equal the sum of the parts because farms reporting more than one category (or activity) are only counted once.
36	Farms reporting manure applications. The "Total number of farms" does not equal the sum of the parts because farms reporting more than one category (or activity) are only counted once.
37	Solid spreader. "Solid spreader" includes "Area for solid or composted manure, incorporated into soil" and "Area for solid or composted manure, not incorporated".

Manitoba Agriculture, Market Intelligence Section
809-401 York Avenue, Winnipeg MB R3C 0P8 Telephone 1-204-945-3503

Other publications available from Market Intelligence Section of Manitoba Agriculture are found on the [Markets and Statistics](#) page.